



Resistance to mold development assessment of bio-based building materials

M. Viel, F. Collet, Yann Lecieux, M.L.M. François, V. Colson, Christophe Lanos, A. Hussain, M. Lawrence

► To cite this version:

M. Viel, F. Collet, Yann Lecieux, M.L.M. François, V. Colson, et al.. Resistance to mold development assessment of bio-based building materials. *Composites Part B: Engineering*, 2019, 158, pp.406-418. 10.1016/j.compositesb.2018.09.063 . hal-01903670

HAL Id: hal-01903670

<https://univ-rennes.hal.science/hal-01903670>

Submitted on 9 Nov 2018

HAL is a multi-disciplinary open access archive for the deposit and dissemination of scientific research documents, whether they are published or not. The documents may come from teaching and research institutions in France or abroad, or from public or private research centers.

L'archive ouverte pluridisciplinaire **HAL**, est destinée au dépôt et à la diffusion de documents scientifiques de niveau recherche, publiés ou non, émanant des établissements d'enseignement et de recherche français ou étrangers, des laboratoires publics ou privés.

Resistance to mold development assessment of bio-based building materials

Marie Viel^{a, *}, Florence Collet^a, Yann Lecieux^b, Marc François^b, Valentin Colson^{a, c}, Christophe Lanos^a, Atif Hussain^d and Mike Lawrence^d

^a Université de Rennes, Laboratoire Génie Civil et Génie Mécanique, BP 90422, Rennes, France

^b Université de Nantes, Institut de Recherche en Génie Civil et Mécanique, BP 92208, Nantes, France

^c CAVAC Biomatériaux, Le Fief Chapitre, Sainte Gemme la Plaine, France

^d BRE Centre for Innovative Construction Materials, Department of Architecture and Civil Engineering, University of Bath, BA2 7AY, United Kingdom

* Corresponding author: marie.viel@univ-rennes1.fr

Abstract

Nowadays, insulating building materials are developed from the valorization of agro-resources. They show high ecological and hygrothermal performance. Before making them available on the market, there is a need to classify them according to their decay resistance. This paper aims to propose a test method that qualifies bio-based composites with respect to their performance. An accelerated aging test was carried out on 5 composites made with two different agro-resources (hemp and rape) and with different binders. It consists of exposing the specimens to (30 °C; 90% RH) for three months. During the test, the specimens are regularly weighed and photographed. The sample mass and the percentage of surface contaminated by fungi are measured along the test. Finally, a microscopic view allows identifying the species of the developed molds.

Keywords

A. Biocomposite; B. Environmental degradation; D. Non-destructive testing; D. Optical microscopy; DIC (Digital Image Correlation).

1. Introduction

The development of new insulating building materials from agro-resources of local agriculture (hemp shiv, flax shiv, wheat straw, etc.) is currently booming. The main quality of these materials is their hygrothermal performance when compared with traditional building materials. However, before they can be made available in the market, others characteristics need to be evaluated such as mechanical performance and durability. This paper investigates the decay resistance of the newly developed composites. Bio-based materials are assumed to be highly sensitive to the mold growth due to their chemical composition: cellulose, hemicellulose, lignin and proteins.

The molds are produced by wide variety of microorganisms, mainly microscopic fungi and yeasts. These play an important role in the decomposition of plant materials. These microorganisms grow and reproduce very quickly, spreading spores and mycelium.

These microorganisms may already be present inside building materials (walls, partitions, ceilings) or may be directly introduced into homes through ventilation. Their growth depends on various factors, in particular: flood, water leaks (roof or pipework), poorly-ventilated spaces (in kitchen, in bathroom) and building seals [1,2]. In all cases, the fungi will grow when materials contain free water. For wood, the water content at the fiber saturation point ranges from 20 to 30 %. The appearance of fungi induces a mass loss of between 5 and 10 % and the mechanical properties decrease between 20 and 80 % depending on the type of material [3]. The molds collect water, nutritional substances and minerals needed for their synthesis from the surrounding environment and the materials [2,4–7].

Although fungi are present in the atmosphere, higher concentrations may result in adverse health effects. Indeed, many fungal components are likely to cause adverse effects on the health of exposed individuals. Mycelial fragments can be present in ambient air and could be inhaled. Their walls contain glucans (complex sugar) with inflammatory properties. Spores may also cause allergic reactions such as allergic rhinitis or worsening of asthma symptoms. Furthermore, fungi release toxins of which toxicity may persist after the fungi have ceased to grow. The threshold of sensitivity varies from one individual to another, and according to the type of mold for each person. The individual response and the experienced symptoms vary considerably depending on the individual sensitivity and the duration of exposure to the fungi. Infants, children, the elderly, pregnant women and people suffering from

respiratory diseases, allergies, asthma and weakened immune systems are usually more sensitive to mold exposure. Likewise, the severity is not necessarily proportional to the extent of exposure. Mold prevention and remediation in new and existing housing is thus not solely an aesthetic issue, but also one of public health and hygiene [1,5,8,9].

There is therefore a need to classify materials depending on their decay resistance in order to use them appropriately. To qualify the durability of materials, different methods and standards exist such as: Johansson method [10], AWWA Standard E24-06 [11], ASTM 2012 [12] or BSI EN ISO 846 – 1997 [13], assessing the resistance of specimen surface to mold growth after fungi inoculation. For each of these methods, the intensity of specimen's mold growth is visually rated using a scale during the test period. Thus, this is a somewhat subjective type of assessment.

The aim of this paper is to develop a method to qualify bio-based composites with respect to their resistance to mold development. The composites were exposed over a three months period to unfavorable conditions: 30°C and 90% RH. These conditions are expected to initiate and accelerate mold growth on the surface of bio-based panels. The composite specimens were made with two different agro-resources (hemp and rape) mixed with different binders. They are tested without prior sterilization or inoculation with mold. Specimens are regularly weighed and photographed during the test. The evolution of two indicators is thus measured over time: the sample mass and the percentage of its surface contaminated by fungi. Two ways are used to rate the contaminated area: visual inspection as stated previously and digital image correlation (DIC). The latter method is developed in this work for quick quantification of the contaminated surface of the specimens by molds in an objective manner unlike the visual evaluation. At the end of the test, microscopic views are analyzed in order to identify the mold species which have contaminated the composite.

2. Materials and methods

2.1. Bio-aggregates

Two types of aggregates are considered in this study: hemp shiv and rape straw (Fig. 3). The main characteristics of these aggregates are reported in Table 1. The particle size distribution, bulk density and thermal conductivity were obtained using protocols set by RILEM TC 236-BBM [14]. The moisture

buffer value (MBV) is measured for bulk materials according to a method based on the NORDTEST protocol [15].

The hemp shiv is a commercial product (Biofibat – CAVAC, France) commonly used to produce hemp concrete. The mean width of particles (W50) is 2.2 mm and the mean length (L50) is 8.0 mm. The maximal width is 5.0 mm and the maximal length is 19.0 mm. The thermal conductivity is 64.1 mW/(m.K) for bulk density around of 110 kg/m³. The MBV is 2.35 g/(m².%RH). According the classification of the Nordtest project, bulk hemp shiv appears as an excellent hygric regulator (MBV higher than 2 g/(m².%RH)).

The rape straw (supplied by CAVAC, France) is the residual portion of the threshing of rape commonly used for animal bedding, mulching or animal feeding. The mean width of particles is 3.1 mm and the mean length is 15.9 mm. The maximal width is 8.5 mm and the maximal length is 45.2 mm. The thermal conductivity is 49.9 mW/(m.K) for bulk density around of 75 kg/m³. The MBV is 2.25 g/(m².%RH). According the classification of the Nordtest project, it is an excellent hygric regulator (MBV higher than 2 g/(m².%RH)).

Table 1 : Main characteristics of hemp shiv and rape straw

Aggregates	Hemp shiv	Rape straw
Mean Width (W50, mm)	2.2	3.1
Maximal width (mm)	5.0	8.5
Mean Length (L50, mm)	8.0	15.9
Maximal length (mm)	19.0	45.2
Bulk density (kg/m ³)	107.9	73.3
Thermal conductivity (mW/(m.K))	64.1	49.9
MBV (g/(m ² .%RH))	2.35	2.25

2.2. Composite formulations

The composite formulations are developed within ISOBIO project [16]. During this project, several lines of research are studied with the aim of producing, from these bio-aggregates and a green binder, a rigid insulation panel. The main lines of research are as follows:

- Use the adhesive properties of aggregates after treatment,
- Use crosslink binders to improve the mechanical properties and water repellence of composites,

- Use a sol-gel treatment to improve the water repellence of composites.

Numerous formulations were investigated and the five best ones are selected to produce specimens for this study. They are made of rape straw or hemp shiv, treated or not, mixed with or without binders and with or without additives. The formulations are summarized in Table 2.

C1 composites are made of rape straw after exposure to alkali treatment. Preliminary work showed that after alkaline and thermal treatments on rape straw, the produced composites have good cohesion, which is induced by the polymerization of soluble components. This formulation has an advantage to only use treated rape straw and thus 100 % bio-based insulation panels can be produced in the same line as the hemp-straw composites [17].

C2 composites are made of hemp shiv mixed with a binder formulated using a starch derivative and a crosslinker. The starch and its derivatives have good adhesive properties on the lignocellulosic substrates. However an important issue is the low energy chemical bonds (Van der Waals and hydrogen bonds), which ensure starch cohesion. Moreover, they can be easily hydrolyzed by water, resulting in poor water resistance of the composite. Therefore a crosslinker is added to create, after a thermal activation, covalent bonds between the starch macromolecules chains and thus, to form a three-dimensional network in order to improve the mechanical strength and the water resistance of the composite. C3 composites are made using the same formulation as C2 composites, but 2 % of paraffin is added, to improve its water repellence.

C4 composites are made of hemp shiv coated with a sol-gel treatment to improve their water repellence. For the preparation of the sol-gel, 1 M of TEOS was added to a mixture of 4 M distilled water, 4 M of absolute ethanol and 0.005 M of nitric acid. 0.015 M of HDTMS was added to the above mixture as the hydrophobic agent. The sol was vigorously stirred at 40 °C and atmospheric pressure for nearly 2 hours. The sols were allowed to age for 96 hours in closed container at room temperature before to be mixed with the hemp shiv in order to coat them. In the case of C4 composites, this sol-gel coating also serves as a binder. C5 composites are made of the same coated aggregates as C4

composites and the same binder as C2 composites. Compared to C4 composites, the addition of the binder improves the mechanical properties.

Table 2 : Specimens composition

Formulations	C1	C2	C3	C4	C5
Aggregates	Rape straw 100 %	Hemp shiv 90 %	Hemp shiv 88 %	Hemp shiv 100 %	Hemp shiv 90 %
Treatment	Alkali	Without 8% Starch derivative 2 % Crosslinker	Without 8% Starch derivative 2 % Crosslinker	Sol-gel	Sol-gel 8 % Starch derivative 2 % Crosslinker
Binder	Without	Without	Without	Without	Without
Additive	Without	Without	Paraffin 2%	Without	Without
Solvent	Without	Water 33 % of dry content	Water 33 % of dry content	Without	Water 33 % of dry content

2.3. Composite production process

For preparation of C1, C2, C3 and C5 composites, the bio-aggregates (treated, coated or not) are moistened with the solvent and/or the binder, if any. Three specimens are produced from the same mixture. This batch is divided into three equal parts (A, B and C) and each part is introduced in one of the three cells of a mold. Each part is compacted 5 times at 0.25 MPa in the mold and then placed in an oven at 190 °C for 2 hours. The three specimens of dimensions 100 x 100 x 50 mm³ are demolded once they cool down to room temperature (Figure 1).

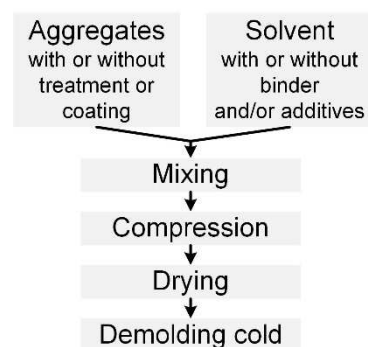


Figure 1 : Flow-chart of composites production (except C4 formulation)

For C4 formulation, mixing of the constituent materials, hemp shiv (75 vol%) and sol (25 vol%), were carried out manually to achieve a uniform mixture. The mass of the materials was pre-calculated to target a final density of 175 kg/m³ for the composites. Hemp shiv were mixed with the sol and then placed into a phenolic ply mold, tamped down and left for overnight in the oven at 80 °C. The

specimens of dimensions 100 x 100 x 50 mm³ were removed from the molds and transferred to a conditioning room at 19 °C and 50% RH.

Figure 2 shows the produced composites and Table 3 gives their apparent density. The composites based on hemp shiv have very close densities ranging from 173 to 203 kg/m³. The composite based on rape straw (C1) has the highest density (288 kg/m³) due to much higher density of the aggregate after alkali-treatment which reduces intra and inter-particle porosity. The C1 composites have the highest pH (10) due to alkali treatment. The composites made with starch derivative based binder and crosslinker (C2, C3 and C5), have an acid pH of 6. The composites which are glued with sol-gel (C4), have the lowest pH (4).



Figure 2 : Developed composites

Table 3 : Apparent density and pH surface of composites

N°	C1	C2	C3	C4	C5
Density (kg/m ³)	287.66 ± 9.49	181.02 ± 2.82	184.21 ± 1.51	173.92 ± 6.11	203.10 ± 4.20
CoV	3.30 %	1.56 %	0.82 %	3.51 %	2.07 %
pH	10	6	6	4	6

2.4. Methods for characterization

2.4.1. Biological aging

The accelerated aging test evaluates the fungal resistance of the composites at given temperature and humidity and is schematized in Figure 3. After stabilization at 23°C and 50% RH, the biological aging tests are performed in a climate chamber (Vötsch VC0034, Figure 3.1) under controlled temperature and relative humidity at 30°C and 90% RH for three months. The specimens are tested without prior sterilization or inoculation with mold to closely reproduce a real exposure situation.

For each formulation, three specimens are tested. Each specimen (3 specimens per formulation) is placed in a plastic box to prevent contamination between specimens. In order to facilitate image treatment, the specimen is prevented from moving in the box, by making use of the aluminum adhesive block. Furthermore, the experimental bench allows to take pictures of the top surface of the specimens in a consistent manner (Figure 3.3). Every week day, the specimens are weighed (Figure 3.2) and visually inspected. Pictures are captured with a camera (Coolpix 8700, 8 Megapixels, Nikon).

For the analysis, mass variation from the steady state point is related to the exchange surface area (including horizontal top and lateral surfaces of the specimen). The mass loss of each formulation is expressed as the mass ratio between the maximal mass and this of the given time, using Equation (1).

$$ML = \frac{m_{max} - m}{m_{max}} \times 100 \quad (1)$$

Where ML is the mass loss (%); m_{max} is the maximal mass of composite (g) and m is the mass of composite at the given time (g).

On the final day of the test, the samples are visually evaluated for mold growth according the rating scale of BSI EN ISO 846 – 1997 [13], which is shown in Table 4. This method is subjective. Thus, the final rating is the average value of the given rating by each author in this publication, making a total of 8 people.

Table 4: Assessment of growth following the BSI EN ISO 846 – 1997 [13]

Intensity of growth	Evaluation
0	No growth apparent under the microscope.
1	No growth visible to the naked eye, but clearly visible under the microscope.
2	Growth visible to the naked eye, covering up to 25 % of the test surface.
3	Growth visible to the naked eye, covering up to 50 % of the test surface.
4	Considerable growth, covering more than 50 % of the test surface.
5	Heavy growth, covering more than 75 % of the test surface.

The chosen method has an advantage of being non-intrusive unlike other methods found in the literature:

- Use of adhesive to remove fungal spores from the substrate and then scanning of mold imprint [18];
- Scanning two sides of the specimen [19].

It should be noted that during the entire period of the test the biotope remains undisturbed.

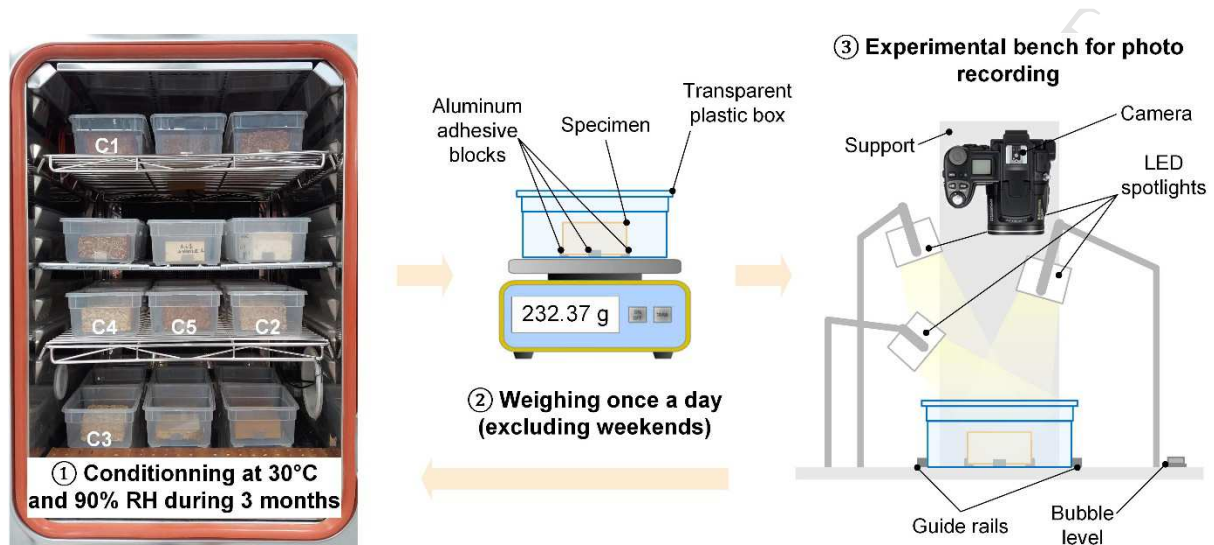


Figure 3: Experimental device for biological aging: conditioning, weighing and photo recording

2.4.2. Image analysis

In this study, the chosen contamination indicator is the relative photographed surface contaminated by mold with reference to the total surface. A similar approach is used by various researchers in the field such as Nielsen et al [2], Johansson et al [10], Clausen and Yang [18] and Garzon-Barrero et al [19]. To evaluate the mold growth between two dates t_0 and t , two photographs of the same specimen have been taken. In this study, a very simple experimental device has been chosen (Figure 3, Experimental bench for photo recording) to avoid use of sophisticated equipment. However for image analysis, it is necessary to use or to develop specific IT-tools.

The image analysis is performed in two steps:

- Firstly, the displacement field between images recorded at t_0 and t is computed. This displacement may be due to operator handling (such as accidental motion of the specimen or the camera) or caused by a dilatation of the composite due to swelling induced by moisture change. This step is achieved, thanks to Digital Image Correlation (DIC) analysis, using the code DIGIMCO developed by Marc François in MATLAB software and freely available. Similar

tools, whether free or commercial software exist [20,21] and have been used for several years to perform displacement field measurement, or to evaluate mechanical properties [22–24].

- Secondly, the location of mold is revealed thanks to the error map of correlation between images recorded at time t_0 and t . It represents the discrepancy between the two images once correlated in space. A gray level difference reveals the presence of molds.

A digital image is a set of data produced by recording variation in the intensity of a signal. It's a matrix of r rows and c columns. Each pixel has a value that represents the brightness of a given color at any specific location. In this paper, the image f and the image g designate the images of an object recorded in the initial state (at time t_0) and in the final state (at time t) respectively. The discrete functions $f(\mathbf{X})$ and $g(\mathbf{X})$ denote the gray levels associated with pixel of the image f and g respectively, located at position \mathbf{X} (the coordinates are in pixels). The location of a given texture point is referred to be as \mathbf{X} in image f and \mathbf{x} in image g (see Figure 4). Possible transformations between two images are schematized in Figure 4 (i.e. dilatation, translation and rotation). The first step of the analysis is to compute the displacement field $\mathbf{u}(\mathbf{X})$ which gives the best fit between images f and g . The texture of the two images is quite similar and is used to determine this fit.

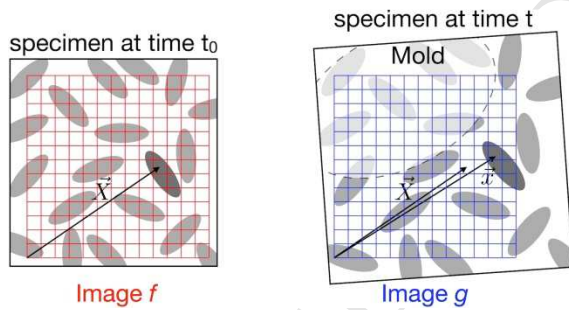


Figure 4: Digital image correlation between initial image f (time t_0) and current image g (time t)

The displacement \mathbf{u} is defined by:

$$\mathbf{x} = \mathbf{X} + \mathbf{u} \quad (2)$$

Supposing a homogeneous deformation, the mapping of the transformation is a parameterized field of the form:

$$\mathbf{x} = \mathbf{F} \cdot (\mathbf{X} + \mathbf{T}) \quad (3)$$

where \mathbf{T} is a translation vector described by the parameters λ_1 and λ_2 .

$$\lambda_1 = T_1 \quad (4)$$

$$\lambda_2 = T_2 \quad (5)$$

and \mathbf{F} is the deformation gradient tensor described by the parameters $(\lambda_3, \lambda_4, \lambda_5, \lambda_6)$:

$$\lambda_3 = n (F_{11} - 1) \quad (6)$$

$$\lambda_4 = n (F_{12}) \quad (7)$$

$$\lambda_5 = n (F_{21}) \quad (8)$$

$$\lambda_6 = n (F_{22} - 1) \quad (9)$$

where n is a weighting factor. It must be emphasized that the tensor \mathbf{F} includes pure deformation, rigid rotation and dilatation. The DIC method [22] is based on an assumption of optical flow conservation between images f and g whose texture does not significantly differ thus $f(\mathbf{X}) = g(\mathbf{x}) = g(\mathbf{X} + \mathbf{u})$ (with a possible error). The experimental conditions are compatible with these assumptions since the brightness of the images and the color of the composites do not significantly evolve during the test. To find the displacement \mathbf{u} or the parameters λ_i , the sum of squared differences φ of the gray levels have to be minimized over the zone of interest $-Z_i-$ which corresponds in this study to the whole photographed face of the composite is:

$$\varphi(\lambda_1, \lambda_2, \lambda_3, \lambda_4, \lambda_5, \lambda_6) = \sum_{\mathbf{x} \in Z_i} (g(\mathbf{x}) - f(\mathbf{X}))^2 \quad (10)$$

However the computation of the displacement field \mathbf{u} is not the objective of this study. It is only necessary to compare images f (original) and g (with mold), pixel to pixel, at exactly the same location. Here, the presence of mold changes the gray level. The zones affected by mold are supposed to be large with respect to the texture size of the image of the composite. Then, assuming a uniform variation of the gray level b , (due to the presence of mold) the equation 10 becomes:

$$\varphi(\lambda_1, \lambda_2, \lambda_3, \lambda_4, \lambda_5, \lambda_6) = \sum_{\mathbf{x} \in Z_i} (g(\mathbf{x}) + b - f(\mathbf{X}))^2 \quad (11)$$

The result of the minimization (i.e. the computation of parameters λ_i or the displacement field \mathbf{u}) is not modified by the presence of b since it does not modify the gradient of φ [22]. Figure 5 illustrates the method. The function $f(\mathbf{X})$ represents a 1D example of gray level in the initial image f (without mold). The function $g(\mathbf{X})$ represents the final grey level of image g in which molds have changed the gray level of some domains. A rigid body motion is visible. Once computed the best correlation (Equation 11) the maximum and minimum shall match between $f(\mathbf{X})$ and $g(\mathbf{x})$. Then, the difference $g(\mathbf{x}) - f(\mathbf{X})$ exhibits the location of the colonization.

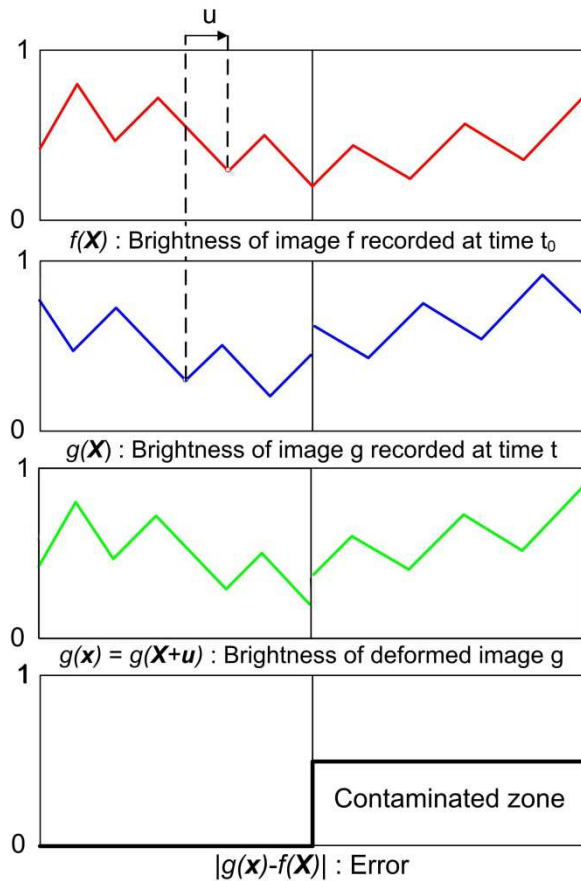


Figure 5: Relative brightness, of image g and f : an error involves the detection of a new object.

As an example, a test was performed on an 8-bit image (brightness coded from 0 to 256) of the composite (C1) without visible mold (see Figure 6). The reference image 6.a is compared with the image (6.b). It is a photography of the same composite taken 24 hours later also free of molds. In image 6.c an inscription is added with drawing software. Then, with DIGIMCO, the uniform displacement field which allows to superimpose the images 6.a and 6.b first, and then the images 6.a and 6.c are searched. Once the displacement field has been obtained, the map of the correlation errors between 6.a and 6.b is displayed on the image 6.d. On the image 6.e the map of the correlation errors between 6.a and 6.c is also displayed. On the error map 6.e, the inscription added to the image 6.c is clearly visible while the error map 6.d is uniform and has virtually zero errors. From this error map, a thresholding operation (binarization) makes it possible to isolate the change, in this example, the inscription "Test DIGIMCO".

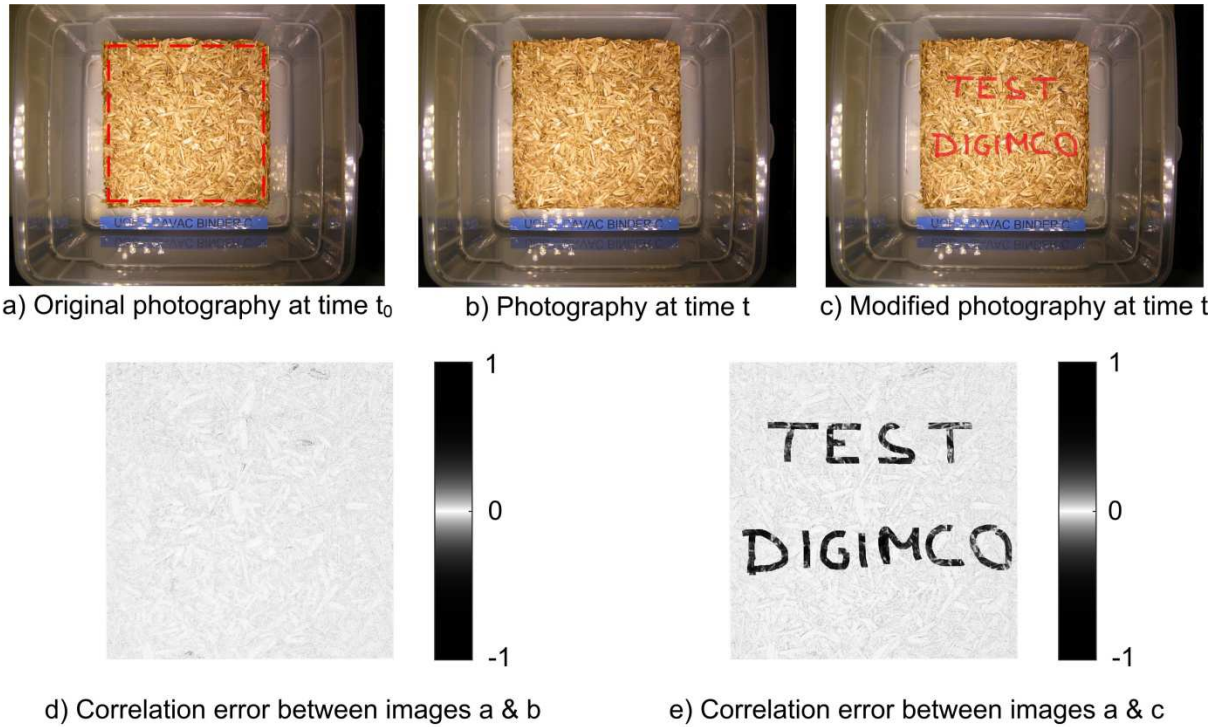


Figure 6: Example of object detection using DIC

It should be emphasized that in the traditional use of the DIC method, the surface of the studied object is covered with a randomly painted speckle pattern. This surface preparation allows to obtain a highly contrasted and unstructured image. This is not the case for this test. The surface of the composite acts as the randomly speckle pattern. The presence of hundreds of particles entangled without a regular pattern on the visible surface of the composite makes it possible to apply the DIC method without modifications. Thus, using the DIC does not require any treatment or modification of the environment likely to modify the growth of the studied organism.

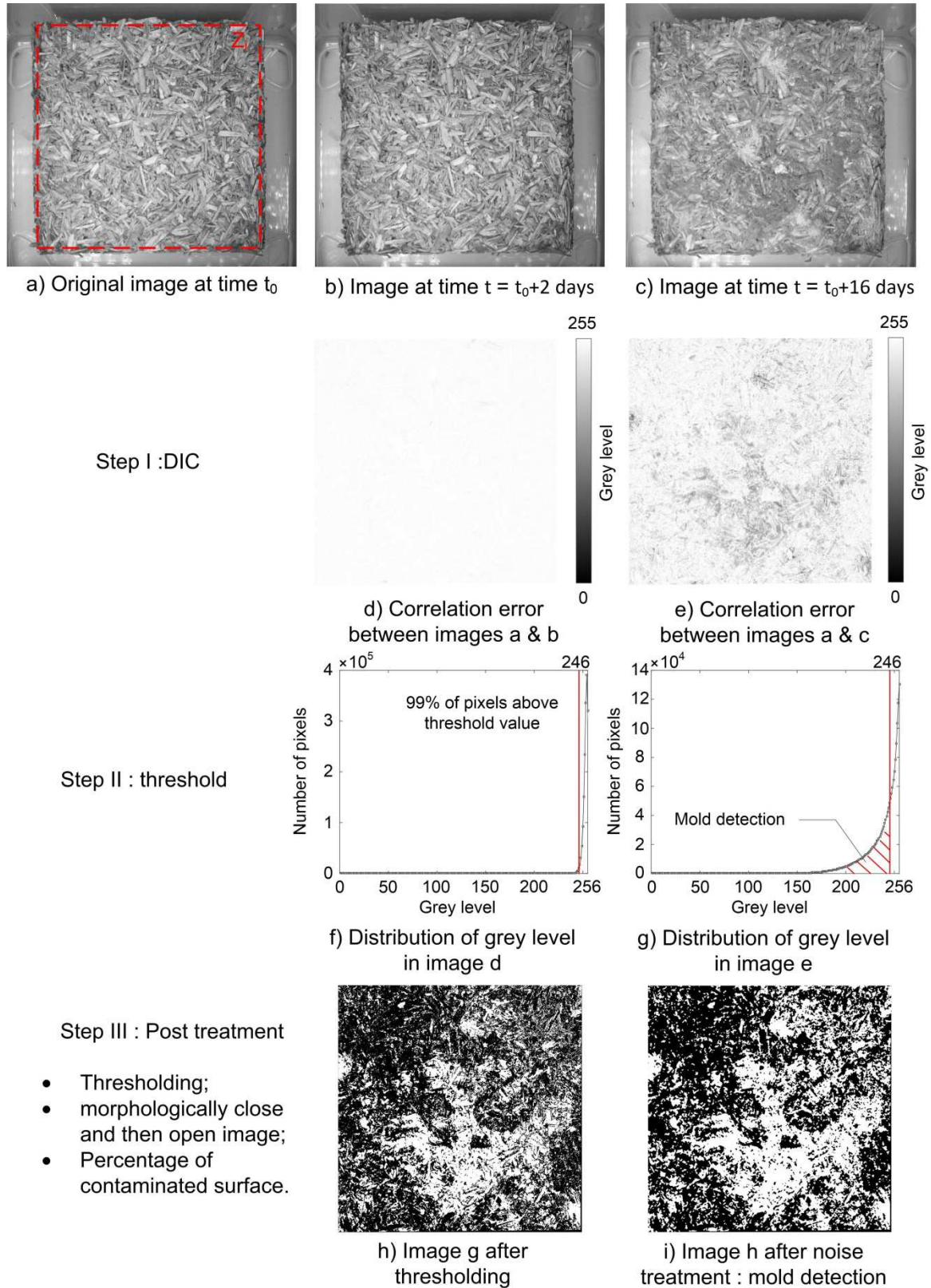


Figure 7: Procedure of image analysis, DIC and post-treatment applied on composite C5

Once correlation error maps are calculated for each image, the post-processing operation is performed with MATLAB. The entire image processing procedure is summarized in Figure 7. It

requires at least 3 pictures: the initial image of the composite 7.a, an image without apparent molds b) and the image to be analyzed 7.c. After obtaining correlation maps 7.d and 7.e, a thresholding is performed. The choice of the threshold value is by definition arbitrary. However, the study of the correlation errors map obtained for an image supposed without fungi (see a sample at $t = t_0 + 2$ days on Figure 7.d) allows to propose a coherent and systematic threshold value. On this example, 99 % of the pixels have a gray level greater than 246 (see Figure 7.f). This value was used for the thresholding operations performed on the photographs taken the following days.

Pixels which value is below this threshold value are considered to be contaminated (see Figure 7.g). After the thresholding, the Figure 7.h is obtained). A morphological operation of opening and closing of the black-and-white image is then performed to filter the isolated pixels (with the “imopen” and “imclose” function of MATLAB) and reduce apparent measurement noise. Finally, the number of white pixels and black pixels in the image are counted to get the percentage of surface contaminated by fungi.

2.4.3. *Microscope visualizations*

After the three-month test period, microscope visualizations are performed in this study to identify the type of mold which are developed on the contaminated composite surface. The infected shiv are collected with a pair of tweezers and are observed under a microscope LCD (5 Megapixels, Bresser). Pictures are captured at 50x and 125x magnification. Then, the pictures are opened with Image J (NIH) with the addition of the Microscope Measurement Tools plugin (Fiji) to take measures and scale bar is added. The microscope is calibrated for a 50x and a 125x magnification using an optical fiber to $125 \pm 0.7 \mu\text{m}$ in diameter (Corning® SMF-28® Ultra Optical Fiber). The determined scale is the average value of five measurements and is validated using a coated optical fiber to $242 \pm 5.0 \mu\text{m}$ in diameter (Corning® SMF-28® Ultra Optical Fiber).

3. Results and Discussions

3.1. *Macroscopic visualizations*

Figure 8 gives the pictures of the C1 to C5 specimens at several times during the test period. The visual inspection shows that during this test, C1 composite does not show any fungal development.

The other composites show gradual growth of molds, more or less, quickly. C2 and C3 composites do not have their surface strongly affected unlike the C4 and C5 composites. C5 composite has the most affected surface. First fungi mainly appear between the shiv on C2, C3, C4 and C5 composites between the fourth and the seventh day. The multiple colors of molds (grey, white and yellow) would suggest at least two types of fungi have contaminated the composite surfaces.

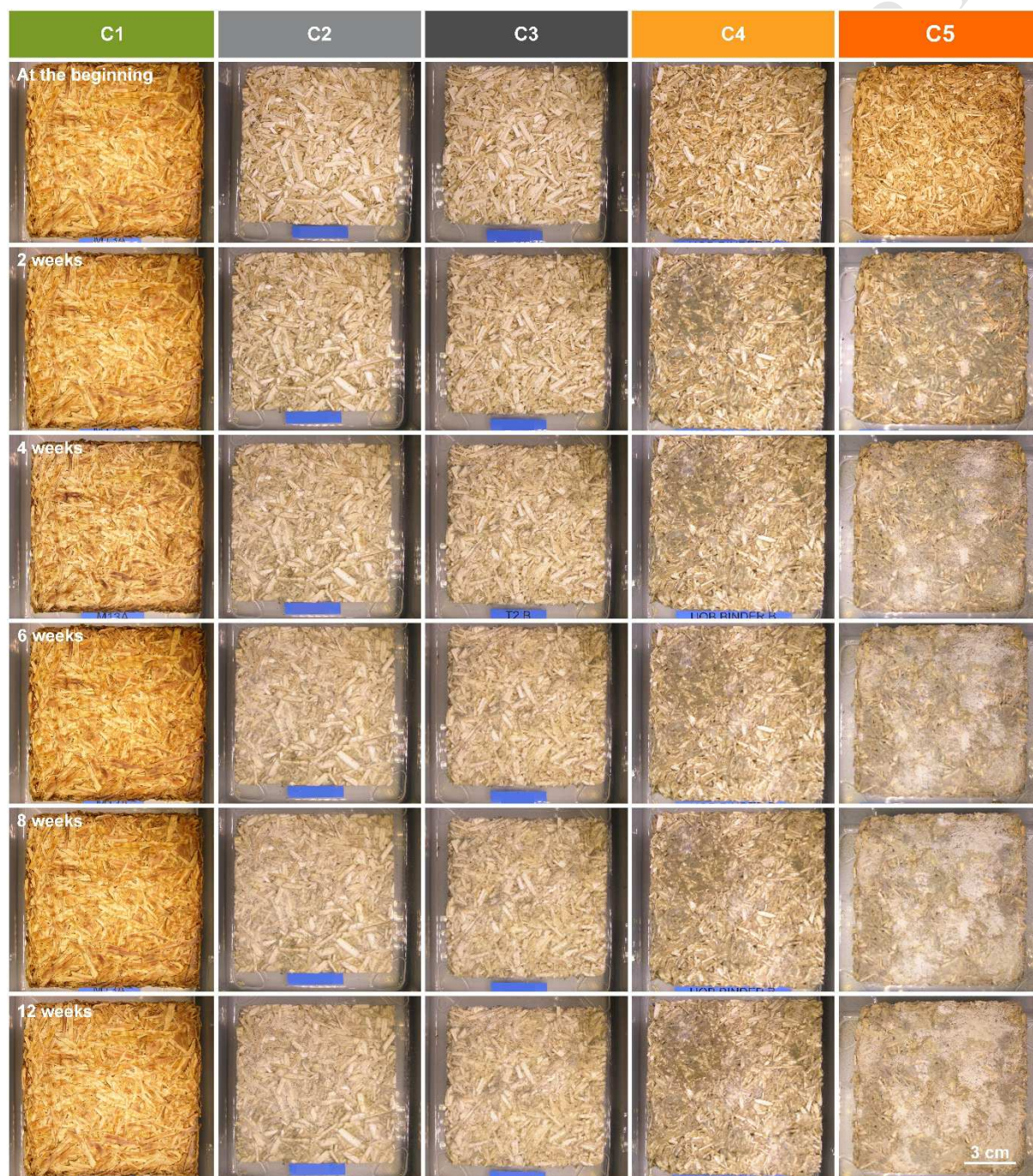


Figure 8: Specimens on the weeks 0, 2, 4, 6, 8 and 12 of ageing test

Figure 9 gives the average ratings of the visual evaluation given by the authors with the rating scale of BSI EN ISO 846 – 1997 [13] at the end of test. C1 composite does not have visible fungi. C3 composite has less than 25 % of its surface contaminated. C2 and C4 composites have between 25 and 50 % of their surface contaminated, with C4 being probably the more contaminated of the two. Finally, C5 composite has more than 75 % of its surface contaminated.

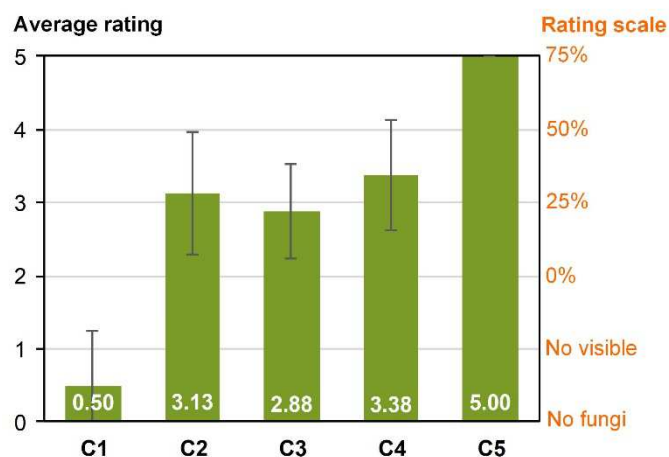


Figure 9: Average rating of mold growth on specimens with the rating scale of BSI EN ISO 846 – 1997 (British Standards Institute, 1997) after 12 weeks at 30°C and 90% RH

3.2. Mass loss

Figure 10 gives the mass variation at 30°C and 90% RH from the steady state point (23°C and 50% RH), related to the exchange surface area (including top and lateral surfaces of specimens). During the first week of exposure, all specimens show an increase in mass due to water vapor adsorption resulting in a water content of about 20 % in specimens. From the eighth day, C5 composite slightly decreases in mass. From the ninth day, C2, C3 and C4 composites slightly decrease in mass too. The mass loss is due to the fungi development. C5 composite has the highest mass loss and C3 composites has the lowest mass loss. The two others composites have similar mass loss. In contrast, from the eighteenth day, C1 formulation slowly increases in mass before stabilizing and reaching water content of about 54 % at the end of the test.

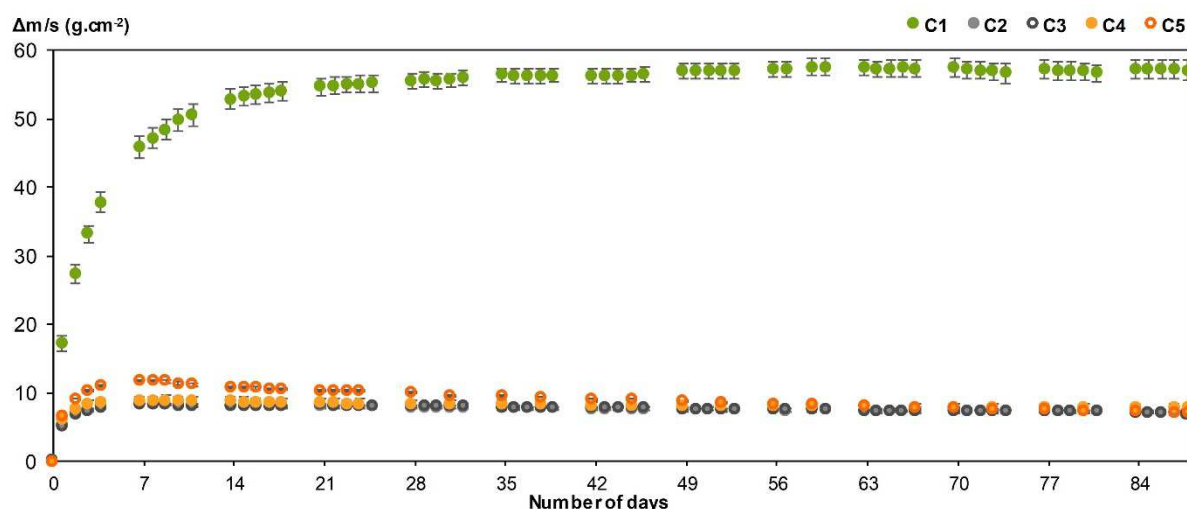


Figure 10: Variation of mass (at 30°C, 90% RH) from the steady state point at (23°C, 50% RH), related to the exchange surface area

Figure 11 and Table 5 give the mass loss for C2, C3, C4 and C5 composites during the test. The kinetics of mass loss increase linearly for the four formulations after the first week. This week certainly corresponds to the time needed to reach a water content threshold in the specimens in order to trigger mold growth. The correlation coefficients of the fitting curves are good as they are higher than 0.93. C5 composite has the highest mass loss. C3 composite has the lowest mass loss. This is probably due to the addition of paraffin which increases the water repellence. Moreover, the amount of adsorbed water by the C3 composite is lower than other composites. C2 and C4 composites have almost similar mass loss, thus the sol-gel coating does not have an impact on the kinetics of water vapor absorption. At the end of the test, these three formulations have a mass loss about 1.15 % whereas the C5 composite has the highest mass loss (4.28 %).

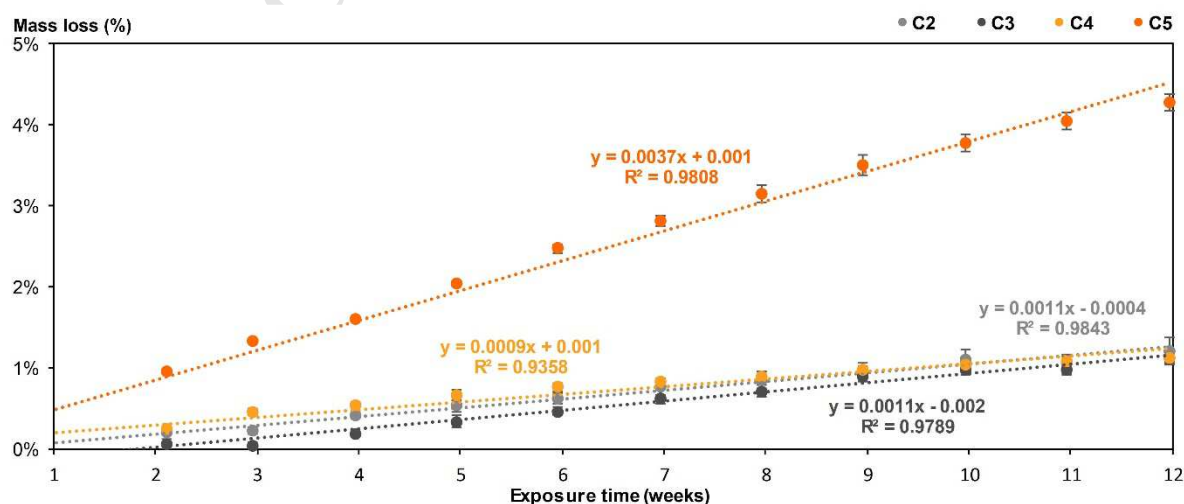


Figure 11: Mass loss for the tested composites during the ageing test

Table 5: Mass loss (ML, %) for the tested composites according to the exposure time (weeks)

Time (weeks)	ML C2	ML C3	ML C4	ML C5
0.96	0.00 ± 0.00%	0.00 ± 0.00%	0.00 ± 0.00%	0.00 ± 0.00%
2.11	0.21 ± 0.02%	0.06 ± 0.06%	0.23 ± 0.02%	0.94 ± 0.01%
2.96	0.23 ± 0.04%	0.03 ± 0.04%	0.45 ± 0.04%	1.33 ± 0.00%
3.96	0.42 ± 0.05%	0.19 ± 0.04%	0.53 ± 0.05%	1.61 ± 0.02%
4.96	0.53 ± 0.07%	0.33 ± 0.07%	0.66 ± 0.06%	2.03 ± 0.03%
5.96	0.62 ± 0.07%	0.46 ± 0.05%	0.76 ± 0.06%	2.47 ± 0.05%
6.96	0.76 ± 0.10%	0.62 ± 0.05%	0.82 ± 0.06%	2.81 ± 0.07%
7.96	0.85 ± 0.10%	0.71 ± 0.08%	0.89 ± 0.06%	3.15 ± 0.10%
8.96	0.95 ± 0.10%	0.90 ± 0.08%	0.97 ± 0.05%	3.50 ± 0.12%
9.96	1.10 ± 0.13%	0.97 ± 0.06%	1.04 ± 0.07%	3.78 ± 0.11%
10.96	1.05 ± 0.11%	0.98 ± 0.07%	1.08 ± 0.07%	4.04 ± 0.10%
11.96	1.21 ± 0.16%	1.13 ± 0.06%	1.12 ± 0.08%	4.28 ± 0.10%

3.3. Image analysis

Figure 12 shows some pictures taken at the end of the test which are used to get the percentage of surface contaminated by the fungi.

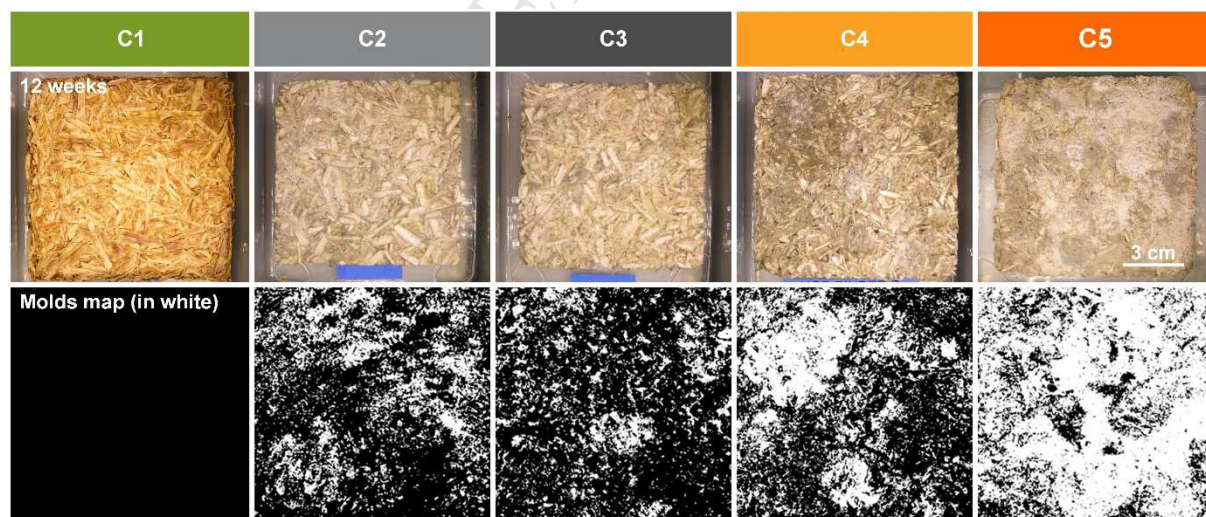


Figure 12 : Pictures before and after DIC treatment at the end of the test

The image analysis leads to the estimation of the surface ratio contaminated by the fungal growth during the test period at 30 °C and 90% RH (Figure 13). The different mold growth rate between

formulations are observed. Overall, C5 specimens have greater fungal growth with a higher standard deviation between the three specimens. C3 specimens have the slowest rate of growth over the 12 week test period. For all specimens, there is a substantial increase in growth during the second week which corresponds to the exponential phase of the fungal growth. During this period, the nutrients are in excess. Thus, the first week corresponds to the time required by the growth conditions to become favorable. The water content of specimens is around 10 % at the beginning of the test. 1 week is required to double this value. This phase is called the lag phase. During the third week, the intensity of growth decreases. It corresponds to the slowdown phase. This is due to a depletion of the culture medium (composites) and an accumulation of waste. This phase goes on two weeks in the case of C5 composite. After the slowdown phase, the ratio of contaminated surface reaches a plateau until the end of the test. This means that the growth becomes zero and therefore the molds that grow multiply and replace those who die. This corresponds to the stationary maximum phase. At the end of test, the mean contaminated surface is 21.87 % for C3 specimens, 28.36 % for C2 specimens, 34.69 % for C4 specimens and 77.50 % for C5 specimens. Growth kinetics observed here are consistent with what is described in the biology literature [25]. These results suggest that the image analysis method provides consistent and exploitable results for this study.

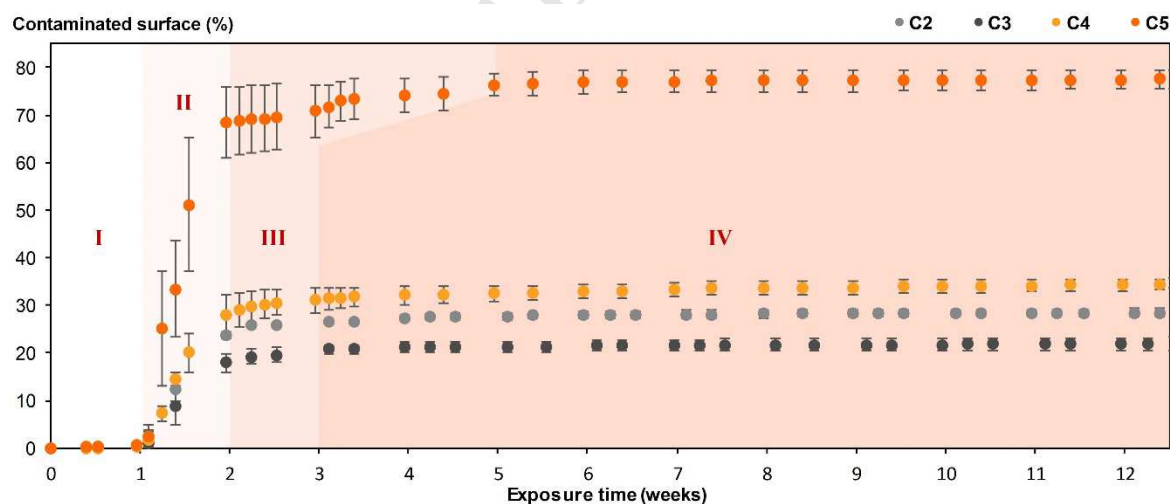


Figure 13: Image analysis: rating of the contaminated surface of C2, C3, C4 and C5 composites exposed to 30°C and 90% RH during the test period correlated to the fungal growth phases with I: Lag phase, II: Exponential phase, III: Decelerating phase and IV: Stationary phase

Table 6 compares the results obtained with the visual evaluation and the image analysis of the contaminated surface of specimens at the end of the test. The average rating from visual evaluation

and from image analysis are close. However, the visual evaluation shows high discrepancy (up to 0.83 %) due to subjective effect. The image analysis leads to representative values as it is not subject to subjective effect. It seems to be more accurate.

Table 6: Average rating from visual evaluation compared to average rating from image analysis of mold growth on specimens after 12 weeks at 30°C and 90% RH

N°	C1	C2	C3	C4	C5
Visual evaluation	0.50 ± 0.76	3.13 ± 0.83	2.88 ± 0.64	3.38 ± 0.74	5.00 ± 0.00
Image analysis	0.00	3.13	2.93	3.43	5.00
Rating scale	No fungi	> 50 %	> 25 %	> 50 %	> 75 %

3.4. Microscopic visualizations

After the test period, a sampling of mold is collected in order to identify the type of fungi, which is responsible for the sample damage. Figure 14 shows some images of contaminated shiv taken using the optical microscope at different magnifications. Table 7 summarizes the fungi characteristics which have contaminated the specimens during the test. In the image 15.a, three species of mold are present. The one which has a long stem with fluffy spherical white head is the *Aspergillus ruber* (AR). It appears in more detail in the image 15.d. Under these white heads, a bright yellow spherical cleistothecium is hardly discernible. It is *Eurotium rubrum* (ER), the sexual form of *Aspergillus ruber* (AR) which is an asexual form. Still under these white heads, shiny smooth black globose pycnidia are slightly visible, which belong certainly to the *Phoma* sp. genus and could be of the *Leptosphaeria maculans* (LM) species. These two fungi appear in more detail in the image 15.e. In images 15.b and 15.c, only one species is present. At the end of a long stem, there is a large white fan. It is the *Penicillium brevicompactum* (PB). In the images of the specimens (Figure 8), the colored areas in gray-brown correspond to this fungi. All contaminated composites (from C2 to C5) are infected by these four species of mold.

The fungi are divided in three types of colonizers which need a minimum of available water for fungal growth on the composites surfaces. The available water in the composites is defined by the water activity (a_w) which corresponds to the equilibrium relative humidity (ERH) in percent in the materials. Three colonizers are: primary ($a_w \leq 0.80$), secondary ($0.80 < a_w \leq 0.90$) and tertiary ($0.90 < a_w$) [26,27]. *Penicillium brevicompactum* (PB), *Eurotium rubrum* (ER) and *Aspergillus ruber* (AR) are primary

colonizers whereas *Leptosphaeria maculans* (LM) is secondary colonizer and may gradually become the dominant fungi. This means that the fungi belonging to the primary colonizers have appeared as soon as the water activity in the specimens made it possible. The secondary colonizers has appeared later, certainly towards the end of the test as these colonizers needs higher water activity than the primary colonizers [28,29]. However, they may create more damage than the primary colonizers because they prefer more complex sugars as cellulose for example [30]. Continuous mass monitoring could have been interesting in order to verify this hypothesis.

Finally, all these molds are potentially allergens. Indeed, these molds are associated with allergic reactions such as allergic rhinitis or worsening of asthma symptoms. The threshold of sensitivity varies from one individual to another, and according to the type of mold for the same person. The individual response and the experienced symptoms vary considerably depending on the individual sensitivity and the duration of exposure to the fungi. Moreover, all molds contain inflammatory substances that can produce inflammation to varying degrees.

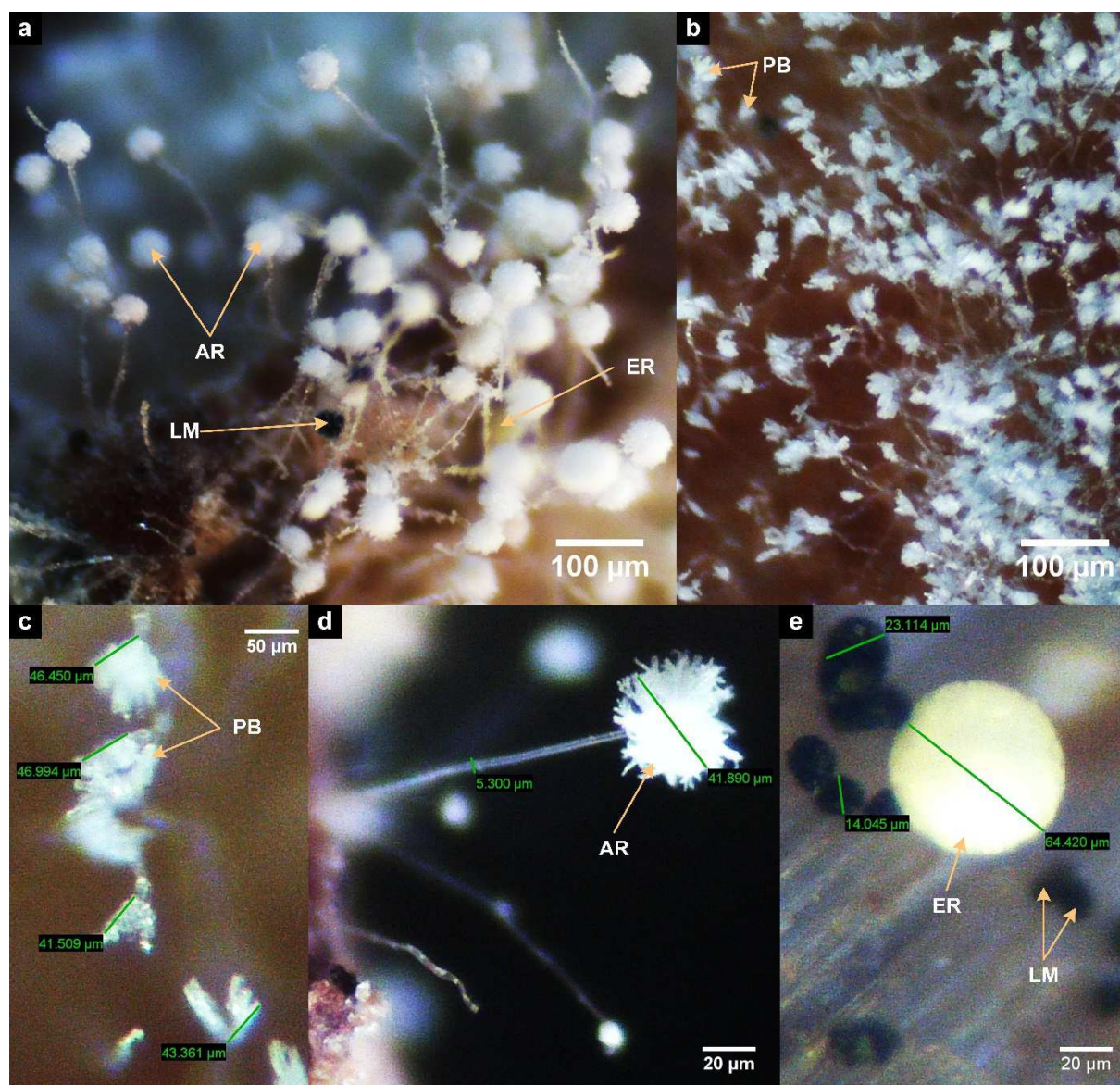


Figure 14: Optical microscope visualizations contaminated surfaces at the 50x (a, b and c) and 125x (d and e) magnifications (AR: *Aspergillus ruber*, ER: *Eurotium rubrum*, LM: *Leptosphaeria maculans* and PB: *Penicillium brevicompactum*)

Table 7: Fungi characteristics

Species	<i>Penicillium brevicompactum</i>	<i>Eurotium rubrum</i> (sexual form)	<i>Aspergillus ruber</i> (asexual form)	<i>Leptosphaeria maculans</i> (anamorph <i>Phoma lingam</i>)
Genus	<i>Penicillium</i> sp.	Trichocomaceae	<i>Aspergillus</i> sp.	<i>Phoma</i> sp.
Order	Moniliales	Eurotiales	Moniliales	Sphaeropsidales
Class	Hyphomycetes	Eurotiomycetes	Hyphomycetes	Coelomycetes
Phylum	Deuteromycota	Ascomycota	Deuteromycota	Deuteromycota
Growth	Can grow between -2 and 30 °C with an optimum at 23 °C	Can grow between 5 and 37 °C with an optimum at 25 °C		Can grow between 15 and 32 °C with an optimum between 20 and 24 °C
Microscopic Appearance	Stipes smooth walled about 500 to 800 μm	Bright yellow spherical cleistothecium about	White radiate conidial heads	Shiny smooth black globose pycnidium

	in length. Broad terverticillate penicillin less than 40 μm long and 40 to 50 μm across the phialide tips.	60 to 150 μm in diameter	about 30 to 50 μm in diameter. Stalk smooth until 750 μm in length and 5 to 6.5 μm in diameter.	until 500 μm in diameter and developing under the epidermis and tearing at maturity.
Toxicity	Mycophenolic acid: Allergens	Quinonoid pigments: Allergens		Allergens

Scheme

References	[31–33]	[31,34,35]	[36–38]
-------------------	---------	------------	---------

4. Conclusions

A protocol for evaluating the resistance to mold contamination of bio-based composites is proposed in this paper. It could be used to assess decay resistance of composites before making them available on the market. Accelerated aging test involves placing the composites in a favorable environment to mold growth for 3 months (30°C; 90% RH). Resistance to colonization of composites is then evaluated over time using three tests:

- Monitoring of external surface percentage contaminated by mold;
- Mass monitoring;
- Microscopic analysis.

The test protocol is easily reproducible since it requires commonly available equipment (a climate chamber, a camera and an optical microscope). The analysis protocol differs from existing intrusive fungal growth evaluation methods or based on subjective visual evaluations since it is fully automatized and do not needs any collecting of samples. The non-intrusive image analysis, based on the use of freely available IT-tools associated with mass monitoring allowed a rapid and quantitative assessment of mold growth and composite degradation.

Mass monitoring overlaps the effect of water absorption and decay. It provides information on long-term degradation of composites. Moreover, it has been possible to determine the kinetics of apparent mass loss. C1 composite does not show decay and the specimens increase in mass until they reach equilibrium water content of about 54 % at the end of the test. For C2, C3, C4 and C5 composites, the kinetics of mass loss increase linearly after the first week. This week certainly corresponds to the needed time to obtain a sufficient water content in the specimens in order to trigger mold growth.

The percentage of the external surface contaminated by the composites is monitored by analyzing images of the composites recorded during the test. The proposed method is based on an adaptation of a DIC algorithm. Growth kinetics observed during the test is consistent with what is described in the biology literature and suggests that the proposed method provides consistent and exploitable results. The monitoring of the exterior surface contaminated by the composites allow a rapid and quantitative evaluation of mold growth, essentially during the first 20 days.

The microscopic analysis make it possible to identify the species present on the composite. All identified molds are potential allergens. These are mainly molds from primary colonizers. The observation of a few individuals from secondary colonizers suggests that the degradation process of the composites is still ongoing after 3 months of testing. Indeed, these colonizers would gradually become the dominant fungi if nutrients are still available on the substrate. Moreover, they may create more damage than the primary colonizers because they prefer more complex sugars. Continuous mass monitoring could have been interesting in order to verify this hypothesis.

This test also makes it possible to establish a link between the chemical formulation of the composites and their resistance to fungal colonization. The results suggest that the pH of given building material is an important predictor of fungal susceptibility. Indeed, C1 formulation is the most resistant to fungal development. This is due to having a surface pH of 10. The other formulations have a surface pH less than or equal to 6 and have a more or less significant fungal development at the end of three months of exposure test at 30°C and 90% RH. Another important predictor is the chemical composition of specimens. However, C3 formulation contains paraffin to increase the water repellence. Thus, the

water content in the C3 specimens is lower than other specimens leading to lower kinetics of mold growth on its exposed surface.

Acknowledgements

This project has received funding from the European Union's Horizon 2020 research and innovation program under grant agreement No. 636835 – The authors would like to thank them.

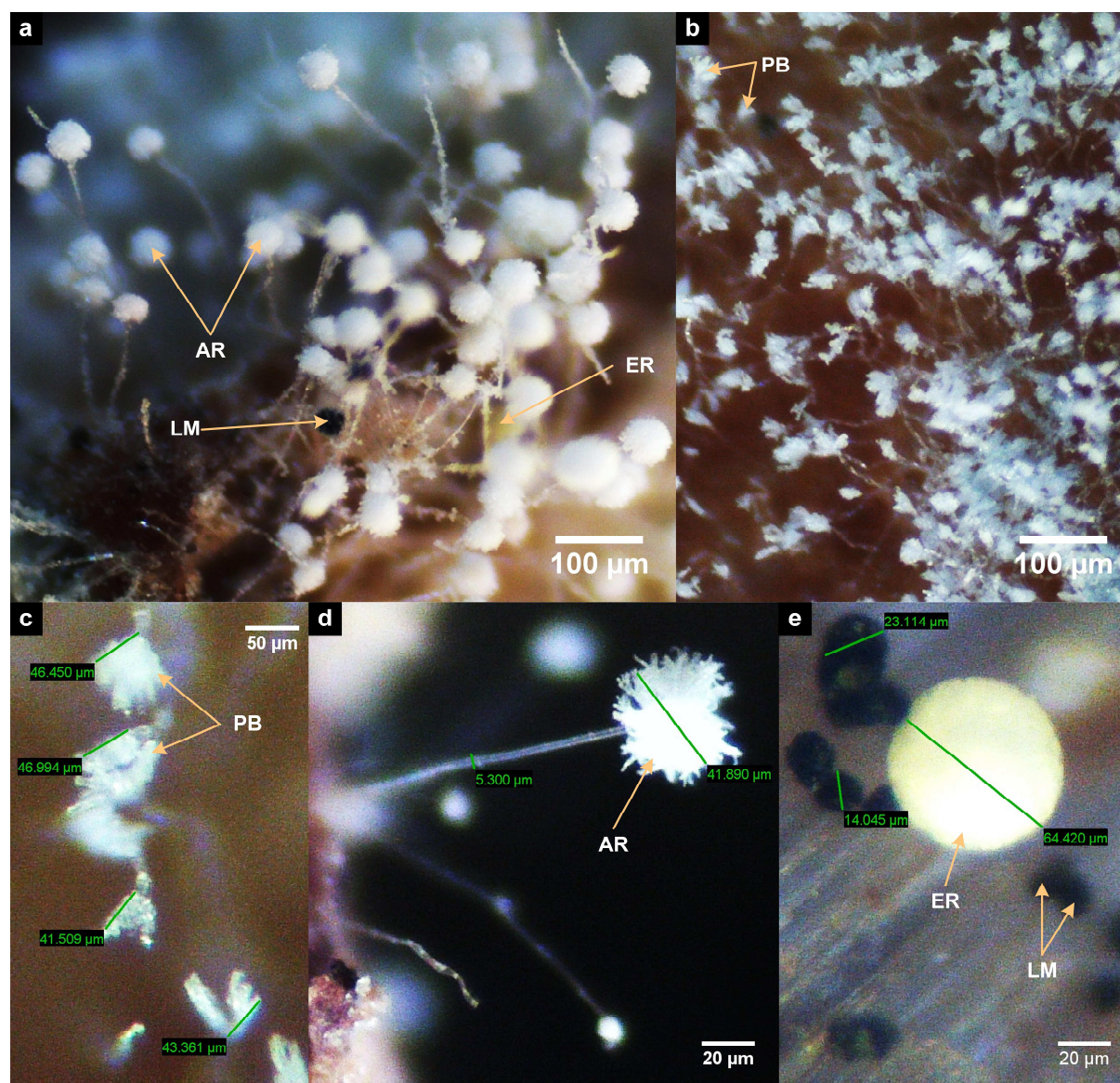
Thanks are due to Tony Hautecoeur for his participation in the completion of this work.

References

- [1] Nevalainen A, Seuri M. Of microbes and men. *Indoor Air* 2005;15:58–64. doi:10.1111/j.1600-0668.2005.00344.x.
- [2] Nielsen KF, Holm G, Uttrup LP, Nielsen PA. Mould growth on building materials under low water activities. Influence of humidity and temperature on fungal growth and secondary metabolism. *Int Biodeterior Biodegrad* 2004;54:325–36. doi:10.1016/j.ibiod.2004.05.002.
- [3] Anagnost SE. Wood Decay, Fungi, Stain and Mold 2011.
- [4] Hoang CP, Kinney KA, Corsi RL, Szaniszló PJ. Resistance of green building materials to fungal growth. *Int Biodeterior Biodegrad* 2010;64:104–13. doi:10.1016/j.ibiod.2009.11.001.
- [5] Murtoniemi T, Hirvonen M-R, Nevalainen A, Suutari M. The relation between growth of four microbes on six different plasterboards and biological activity of spores. *Indoor Air* 2003;13:65–73. doi:10.1034/j.1600-0668.2003.01126.x.
- [6] Pasanen A-L, Rautiala S, Kasanen J-P, Raunio P, Rantamäki J, Kalliokoski P. The Relationship between Measured Moisture Conditions and Fungal Concentrations in Water-Damaged Building Materials. *Indoor Air* 2000;10:111–20. doi:10.1034/j.1600-0668.2000.010002111.x.
- [7] Yang VW, Clausen CA. Antifungal effect of essential oils on southern yellow pine. *Int Biodeterior Biodegrad* 2007;59:302–6. doi:10.1016/j.ibiod.2006.09.004.
- [8] Ezeonu IM, Price DL, Simmons RB, Crow SA, Ahearn DG. Fungal production of volatiles during growth on fiberglass. *Appl Environ Microbiol* 1994;60:4172–3.
- [9] Klammer M, Morsing E, Husemoen T. Fungal growth on different insulation materials exposed to different moisture regimes. *Int Biodeterior Biodegrad* 2004;54:277–82. doi:10.1016/j.ibiod.2004.03.016.
- [10] Johansson P, Ekstrand-Tobin A, Svensson T, Bok G. Laboratory study to determine the critical moisture level for mould growth on building materials. *Int Biodeterior Biodegrad* 2012;73:23–32. doi:10.1016/j.ibiod.2012.05.014.
- [11] AWP Standard. E24-06: Standard method of evaluating the resistance of evaluating the resistance of wood product surfaces to mold growth. 2006.
- [12] ASTM International. ASTM D3273-12: Standard Test Method for Resistance to Growth of Mold on the Surface of Interior Coatings in an Environmental Chamber. 2012.
- [13] British Standards Institute. BSI EN ISO 846: Plastics: Evaluation of the Action of microorganisms. 1997.
- [14] Amziane S, Collet F, Lawrence M, Magniont C, Picandet V, Sonebi M. Recommendation of the RILEM TC 236-BBM: characterisation testing of hemp shiv to determine the initial water content, water absorption, dry density, particle size distribution and thermal conductivity. *Mater Struct* 2017;50:167. doi:10.1617/s11527-017-1029-3.
- [15] Rode C, Peuhkuri RH, Mortensen LH, Hansen KK, Time B, Gustavsen A, et al. Moisture buffering of building materials. Technical University of Denmark, Department of Civil Engineering; 2005.
- [16] ISO BIO - Naturally High Performance Insulation 2015. <http://isobioproject.com/>.
- [17] Collet F, Prétot S, Lanos C. Hemp-Straw Composites: Thermal And Hygric Performances. *Energy Procedia* 2017;139:294–300. doi:10.1016/j.egypro.2017.11.211.

- [18] Clausen CA, Yang VW. Image analysis for mould and sapstain detection on wood, Stockholm (Sweden): 2013.
- [19] Garzón-Barrero NM, Shirakawa MA, Brazolin S, de Barros Pereira RG de FN, de Lara IAR, Savastano H. Evaluation of mold growth on sugarcane bagasse particleboards in natural exposure and in accelerated test. *Int Biodeterior Biodegrad* 2016;115:266–76. doi:10.1016/j.ibiod.2016.09.006.
- [20] Blaber J, Antoniou A. Ncorr v1.2 n.d. <http://www.ncorr.com/index.php/downloads> (accessed January 16, 2018).
- [21] HOLO3, LMT-Cachan, Airbus Group Innovations. Correli STC. Correli STC n.d. <http://www.correli-stc.com/accueil.html> (accessed January 16, 2018).
- [22] Besnard G, Hild F, Roux S. “Finite-Element” Displacement Fields Analysis from Digital Images: Application to Portevin–Le Châtelier Bands. *Exp Mech* 2006;46:789–803. doi:10.1007/s11340-006-9824-8.
- [23] Chu TC, Ranson WF, Sutton MA. Applications of digital-image-correlation techniques to experimental mechanics. *Exp Mech* 1985;25:232–44. doi:10.1007/BF02325092.
- [24] Sutton M, Orteu J-J, Schreier HW. Image Correlation for Shape, Motion and Deformation Measurements. Basic Concepts, Theory and Applications. Springer US. 2009. doi:10.1007/978-0-387-78747-3.
- [25] Leveau J-Y, LARPENT J-P, BOUIX M. Sécurité microbiologique des procédés alimentaires. *Tech Ing Bioprocédés* 2001.
- [26] Heseltine E, Rosen J, World Health Organization, editors. Who guidelines for indoor air quality: dampness and mould. Copenhagen: 2009.
- [27] Stefanowski BK, Curling SF, Ormondroyd GA. A rapid screening method to determine the susceptibility of bio-based construction and insulation products to mould growth. *Int Biodeterior Biodegrad* 2017;116:124–32. doi:10.1016/j.ibiod.2016.10.025.
- [28] Griffith GS, Boddy L. Fungal communities in attached ash (*Fraxinus excelsior*) twigs. *Trans Br Mycol Soc* 1988;91:599–606. doi:10.1016/S0007-1536(88)80033-0.
- [29] Li Y, Wadsö L. Fungal activities of indoor moulds on wood as a function of relative humidity during desorption and adsorption processes. *Eng Life Sci* 2013;13:528–35. doi:10.1002/elsc.201200100.
- [30] Sharma PD. Ecology and environment. Rastogi Publications; 2012.
- [31] Botton B, Breton A, Fevre M, Guy P, Larpent JP, Veau P. Moisissures utiles et nuisibles : importance industrielle. Paris: Masson; 1985.
- [32] Pitt JI, Hocking AD. Fungi and Food Spoilage. Springer Science & Business Media; 2009.
- [33] Visagie CM, Houbraken J, Frisvad JC, Hong S-B, Klaassen CHW, Perrone G, et al. Identification and nomenclature of the genus *Penicillium*. *Stud Mycol* 2014;78:343–71. doi:10.1016/j.simyco.2014.09.001.
- [34] Teófilo H, Ulloa M. El reino de los hongos: Micología básica y aplicada. Mexico: 2^a Edición Fondo de Cultura Económica - UNAM; 1998.
- [35] Thom C, Raper KB. The *Aspergillus glaucus* group. U.S. Dept. of Agriculture; 1941.
- [36] Mitrović P, Marinković R. *Phoma lingam*—a rapeseed parasite in Serbia. *Proc 12th Intern Rapeseed Congr. Wuhan China, 2007*, p. 217–219.
- [37] Smith HC, Sutton BC. *Leptosphaeria maculans* the ascogenous state of *Phoma lingam*. *Trans Br Mycol Soc* 1964;47:159-IN1. doi:10.1016/S0007-1536(64)80049-8.
- [38] Travadon R. Facteurs épidémiologiques contribuant à l’adaptation des populations de *Leptosphaeria maculans* aux résistances spécifiques de *Brassica napus*: dispersion des pycnidiospores et des ascospores et progression systémique du champignon. phdthesis. Agrocampus - Ecole nationale supérieure d’agronomie de rennes, 2008.

- 1 *Figure 1 : Flow-chart of composites production (except C4 formulation)*
- 2 *Figure 2 : Developed composites*
- 3 *Figure 3: Experimental device for biological aging: conditioning, weighing and photo recording*
- 4 *Figure 4: Digital image correlation between initial image f (time t_0) and current image g (time t)*
- 5 *Figure 5: Relative brightness, of image g and f: an error involves the detection of a new object.*
- 6 *Figure 6: Example of object detection using DIC*
- 7 *Figure 7: Procedure of image analysis, DIC and post-treatment applied on composite C5*
- 8 *Figure 8: Specimens on the weeks 0, 2, 4, 6, 8 and 12 of ageing test*
- 9 *Figure 9: Average rating of mold growth on specimens with the rating scale of BSI EN ISO 846 – 1997 (British*
10 *Standards Institute, 1997) after 12 weeks at 30°C and 90% RH*
- 11 *Figure 10: Variation of mass (at 30°C, 90% RH) from the steady state point at (23°C, 50% RH), related to the*
12 *exchange surface area*
- 13 *Figure 11: Mass loss for the tested composites during the ageing test*
- 14 *Figure 12 : Pictures before and after DIC treatment at the end of the test*
- 15 *Figure 13: Image analysis: rating of the contaminated surface of C2, C3, C4 and C5 composites exposed to 30°C*
16 *and 90% RH during the test period correlated to the fungal growth phases with I: Lag phase, II: Exponential*
17 *phase, III: Decelerating phase and IV: Stationary phase*
- 18 *Figure 14: Optical microscope visualizations contaminated surfaces at the 50x (a, b and c) and 125x (d and e)*
19 *magnifications (AR: Aspergillus ruber, ER: Eurotium rubrum, LM: Leptosphaeria maculans and PB: Penicillium*
20 *brevicompactum)*



RESEARCH HIGHLIGHTS

- New rapid method for laboratory scale testing of materials resistance to molds.
- The fungal resistance of new bio-based buildings materials is analyzed.
- Mass monitoring overlaps the effect of water absorption and decay.
- DIC is used to analyze images. Correlation error indicates presence of mold.
- The pH of given building material is an important predictor of fungal susceptibility.