



Environmental radiation alters the gut microbiome of the bank vole *Myodes glareolus*

Anton Lavrinienko, Tapio Mappes, Eugene Tukalenko, Timothy A Mousseau, Anders Pape Møller, Rob Knight, James T Morton, Luke Thompson, Phillip Watts

► To cite this version:

Anton Lavrinienko, Tapio Mappes, Eugene Tukalenko, Timothy A Mousseau, Anders Pape Møller, et al.. Environmental radiation alters the gut microbiome of the bank vole *Myodes glareolus*. The International Society of Microbiological Ecology Journal, 2018, 12 (11), pp.2801-2806. 10.1038/s41396-018-0214-x . hal-02393698

HAL Id: hal-02393698

<https://hal.science/hal-02393698>

Submitted on 4 Dec 2019

HAL is a multi-disciplinary open access archive for the deposit and dissemination of scientific research documents, whether they are published or not. The documents may come from teaching and research institutions in France or abroad, or from public or private research centers.

L'archive ouverte pluridisciplinaire **HAL**, est destinée au dépôt et à la diffusion de documents scientifiques de niveau recherche, publiés ou non, émanant des établissements d'enseignement et de recherche français ou étrangers, des laboratoires publics ou privés.



Environmental radiation alters the gut microbiome of the bank vole *Myodes glareolus*

Anton Lavrinienko¹ · Tapio Mappes² · Eugene Tukalenko^{2,3} · Timothy A. Mousseau⁴ · Anders P. Møller⁵ · Rob Knight^{6,7,8} · James T. Morton^{6,7} · Luke R. Thompson^{9,10} · Phillip C. Watts¹

Received: 16 January 2018 / Revised: 16 May 2018 / Accepted: 11 June 2018 / Published online: 9 July 2018
© The Author(s) 2018. This article is published with open access

Abstract

Gut microbiota composition depends on many factors, although the impact of environmental pollution is largely unknown. We used amplicon sequencing of bacterial 16S rRNA genes to quantify whether anthropogenic radionuclides at Chernobyl (Ukraine) impact the gut microbiome of the bank vole *Myodes glareolus*. Exposure to elevated levels of environmental radionuclides had no detectable effect on the gut community richness but was associated with an almost two-fold increase in the Firmicutes:Bacteroidetes ratio. Animals inhabiting uncontaminated areas had remarkably similar gut communities irrespective of their proximity to the nuclear power plant. Hence, samples could be classified to high-radiation or low-radiation sites based solely on microbial community with >90% accuracy. Radiation-associated bacteria had distinct inferred functional profiles, including pathways involved in degradation, assimilation and transport of carbohydrates, xenobiotics biodegradation, and DNA repair. Our results suggest that exposure to environmental radionuclides significantly alters vertebrate gut microbiota.

Introduction

Our understanding of the factors that shape gut microbiome is dominated by studies of humans [1] or laboratory animals [2]. In contrast, the processes that determine the composition of gut microbiomes in wildlife are poorly known

but include, for example, host diet (in wild mice, [3]) and habitat quality (in primates, [4]). Whether persistent pollutants impact the gut microbiomes of wildlife in their natural habitat is not known, although exposure to various chemicals, heavy metals [5], or ionizing radiation [6] can change the gut microbiota composition of laboratory rodents.

Pollution by radionuclides is a potential source of genotoxicity to humans and wildlife [7]. Animals inhabiting the Chernobyl Exclusion Zone (CEZ) provide the best-studied model of the biological impact of exposure to

Electronic supplementary material The online version of this article (<https://doi.org/10.1038/s41396-018-0214-x>) contains supplementary material, which is available to authorized users.

✉ Anton Lavrinienko
Anton.Lavrinienko@oulu.fi

¹ Department of Ecology and Genetics, University of Oulu, 90014 Oulu, Finland

² Department of Biological and Environmental Science, University of Jyväskylä, 40014 Jyväskylä, Finland

³ Institute of Biology and Medicine, Taras Shevchenko National University of Kyiv, Kyiv 03022, Ukraine

⁴ Department of Biological Sciences, University of South Carolina, Columbia, SC 29208, USA

⁵ Ecologie Systématique Evolution, Université Paris-Sud, CNRS, AgroParisTech, Université Paris-Saclay, 91405 Orsay Cedex, France

⁶ Department of Pediatrics, University of California San Diego, La Jolla, CA 92037, USA

⁷ Department of Computer Science and Engineering, University of California San Diego, La Jolla, CA 92037, USA

⁸ Center for Microbiome Innovation, University of California San Diego, La Jolla, CA 92037, USA

⁹ Department of Biological Sciences and Northern Gulf Institute, University of Southern Mississippi, Hattiesburg, MS, USA

¹⁰ Atlantic Oceanographic and Meteorological Laboratory, National Oceanic and Atmospheric Administration, stationed at Southwest Fisheries Science Center, National Marine Fisheries Service, La Jolla, CA, USA

environmental radionuclides [8]. Detrimental effects of a chronic exposure to radiation on wildlife include elevated DNA damage [7] and upregulation of DNA repair genes [9], increased oxidative stress [10], and an increase in mutation rate [11]. Any yet, little is known about the effects of environmental radiation on microorganisms. While some bacteria from the CEZ have a capacity for adaptation to environmental radioactivity [12, 13], other studies reported a decline in diversity with increased radiation exposure [14]. However, no study has quantified the impact of exposure to environmental radiation on host-associated gut microbial communities in wild animals.

Methods and results

To quantify whether exposure to environmental radiation impacts the gut microbial community of a wild rodent, the bank vole *Myodes glareolus*, we sequenced the V4 region of the 16S rRNA genes from the gut microbiota of 137 bank voles (Supplementary Table 1). Bank voles were sampled from three study areas that differed in the levels of environmental radiation, and represented two treatments: (1) high (CH $n = 63$, mean = 30.1 $\mu\text{Sv/h}$) and (2) low (CL $n = 43$, mean = 0.25 $\mu\text{Sv/h}$ and KL $n = 31$, mean = 0.33 $\mu\text{Sv/h}$) radiation contamination (Supplementary Figure 1, see detailed descriptions of the methods and results in the Supplementary Information). Neither community richness nor evenness differed significantly ($P > 0.05$) between samples grouped by study area (all pairwise comparisons of CH, CL, and KL) or were affected by host sex (Supplementary Figure 2, Supplementary Table 2). Significant ($P = 0.001$) differences in beta diversity (Fig. 1d, Supplementary Figure 3) were observed between CH and both CL and KL, but not due to effects of sex, a contamination by sex interaction, or due to variation in bank vole body mass, head width (a proxy for age), or gravidity status (for females) (Supplementary Table 3).

Radiation, but not individual level predictors such as sex, body mass, or head width (a proxy for age), was identified as a significant predictor of the abundance of Bacteroidetes ($P = 0.0001$), Firmicutes ($P < 0.0001$), and Proteobacteria ($P = 0.001$) (Supplementary Table 4). Notably, we found an almost two-fold, significant ($P < 0.001$) decrease in the ratio of Firmicutes to Bacteroidetes (F:B) sequences from 1.7 in the radioactively contaminated CH area to < 0.9 in the uncontaminated areas CL (F:B = 0.87) and KL (F:B = 0.78) (Fig. 1a, b, Supplementary Tables 5 and 6). This pattern was apparent across replicate sites (Supplementary Figure 4) and taxonomic levels (Fig. 1c, Supplementary Table 6) in each treatment, indicating that the F:B ratio in bank vole guts is associated with the level of environmental radiation.

These trends were also verified beyond the phylum level in independent predictions by using a combination of partial least squares (PLS) regression and balances [15] (Supplementary Information). The area-based balance could differentiate between the CH and the CL/KL areas (AUC = 0.957, F -statistic = 204.7, $P = 9.18 \times 10^{-29}$), with a mean cross-validation prediction accuracy of 0.917 (Fig. 2a, b, Supplementary Tables 7 and 8). This pattern was robust, even when the analysis was limited to 10 samples per study area (Supplementary Table 8). Using the radiation-based balance, we could predict radiation levels (Pearson's $r = -0.766$, $P = 1.46 \times 10^{-27}$) (Supplementary Figure 5, Supplementary Tables 9 and 10, see Supplementary Information for results).

We used PICRUSt [16] to make functional predictions of bank vole gut microbiota. Analyses using both PLS and Kruskal–Wallis identified core bacterial functions strongly associated with the study area (CH vs. CL/KL) (Fig. 2c, Supplementary Table 11). The striking similarity in the functional profiles of the uncontaminated areas, despite their spatial separation (Supplementary Figure 1) and potential habitat differences, and the contrast between the uncontaminated and contaminated areas reinforces the relevance of radioactivity on gut microbial community function.

Discussion

Exposure to anthropogenic radionuclide contamination presents diverse risks to living organisms [7], but its effects on gut microbiota are unknown. Our analysis of the gut microbiota of a wild vertebrate exposed to environmental radiation uncover major changes to the gut microbiome composition and inferred functional profiles.

Extensive inter-individual variation in gut microbiota profiles (Fig. 1d) is a typical feature of host heterogeneity in factors such as age, genotype [17], sex, and diet [3]. While the use of diverse sampling locations will likely add noise, it is an essential part of our experimental design that the treatment (radiation) effect is observed outside one specific location such as the Red Forest (one of the most contaminated sites in the CEZ) [18]. No other potential predictors (e.g. body mass, age, sex) of gut bacterial abundance were found, in contrast to the general effect of radiation exposure (Supplementary Tables 3 and 4).

The CEZ presents a mosaic of radionuclides deposition, where contaminated and uncontaminated areas can be separated by ~ 1.5 km [19]. Bank voles may move up to 1 km within a breeding season [20], and thus individuals from uncontaminated areas within the CEZ (CL), but not individuals in the area around Kyiv (KL), have the opportunity to be exposed to radionuclides prior to capture [9]; with this in mind, the differences in gut microbiota

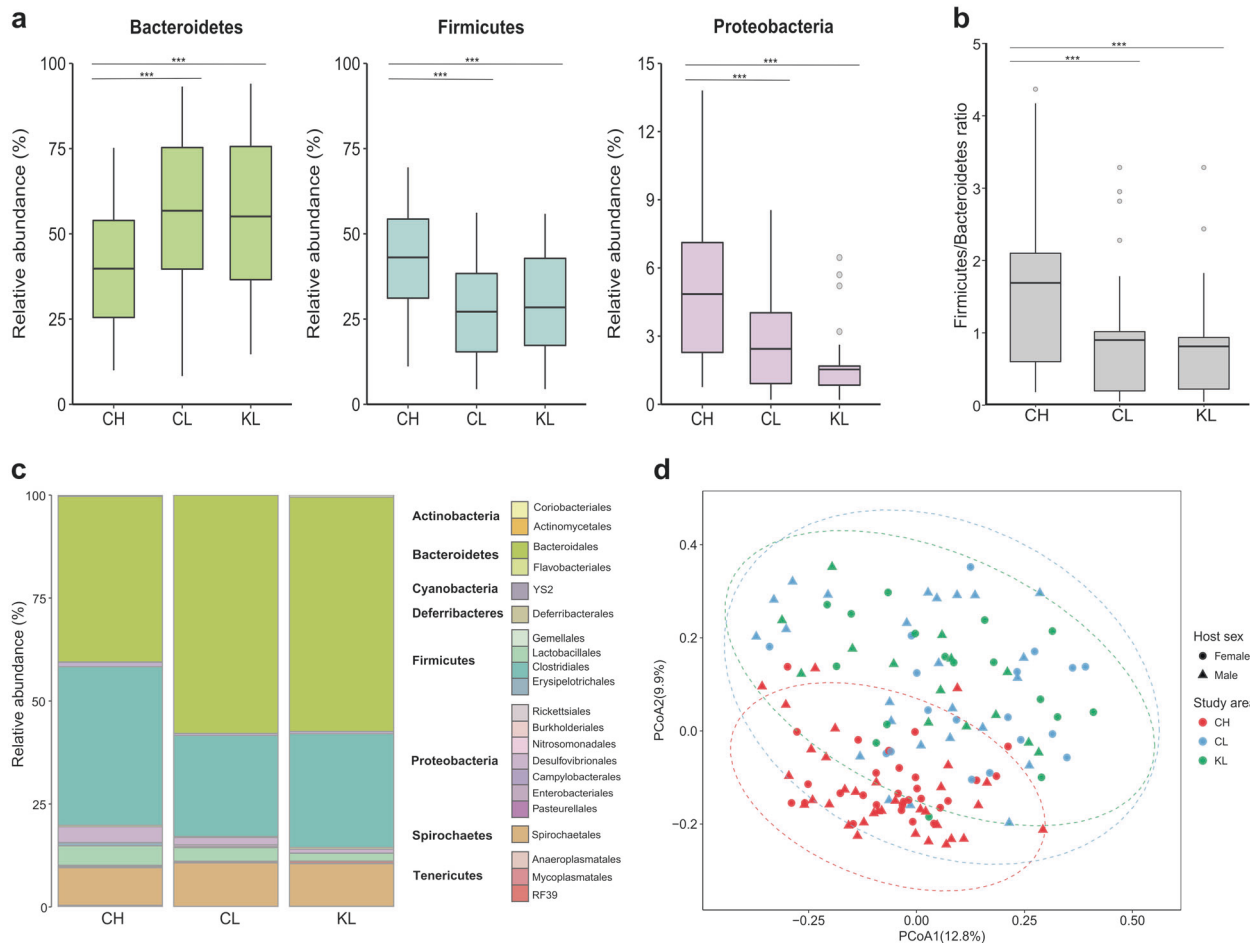


Fig. 1 Radiation-associated differences in bank vole gut microbiota community composition and beta diversity. **a** Relative abundances of three major bacterial phyla and **b** Firmicutes to Bacteroidetes ratio (F:B) in the gut microbiota of bank voles inhabiting areas that differ in levels of environmental radiation. Asterisks indicate significant differences among areas contaminated (CH) and uncontaminated (CL) with radionuclides within the Chernobyl Exclusion Zone and an uncontaminated area near Kyiv (KL), Ukraine (Bonferroni-corrected Kruskal–Wallis test). *** $P < 0.001$. **c** Mean relative abundance of

bacterial taxa at order level in the bank vole gut microbiota. Unassigned taxa (<2.3%) are not shown. **d** PCoA on Bray–Curtis dissimilarity distances between bank vole gut microbiota profiles among the three study areas. Each point represents a single sample, shape indicates host sex, colored according to study area: CH, red ($n = 63$); CL, blue ($n = 43$); KL, green ($n = 31$). Ellipses represent a 95% CI around the cluster centroid. Clustering significance by treatment group was determined by adonis, $P < 0.001$

composition between CH and CL, and the similarity between CL and KL, are striking. The implication is that the gut microbial community responds rapidly and at a small scale to host habitat, consistent with laboratory experiments that show how external stimuli can drive changes in gut microbiome within a few days [5, 21].

Changes in the gut community composition might reflect bacterial radiosensitivity. Interestingly, some members of the *Desulfovibrionaceae* can tolerate high radiation levels (CH) and have a potential for bioremediation of radionuclides [22], raising the possibility that it has a detoxifying role in the bank vole gut. It is not known whether the comparatively low and chronic dose of radionuclides (~2–10 mGy/d) that wildlife experience within the CEZ [23] could impose differential mortality within the

gut bacterial community. However, enrichment of DNA repair pathways (Fig. 2c, Supplementary Table 11) in contaminated areas implies an increased effort to repair bacterial DNA associated with elevated levels of environmental radiation.

Selection for a more distinct gut microbiota in radioactively contaminated areas primarily reflects a replacement of Bacteroidetes by Firmicutes. In a broad context, the F:B ratio within the gut is affected by diet [2, 17] and is associated with bacterial metabolic potential [24]. Bank voles have a catholic diet that includes seeds, leaves, roots, grasses, fruit and fungi and, occasionally, insects, and other invertebrates [25]. Gut communities dominated by Bacteroidetes can exploit various dietary substrates [26] and thus, could allow efficient use of diverse foods, indicating the

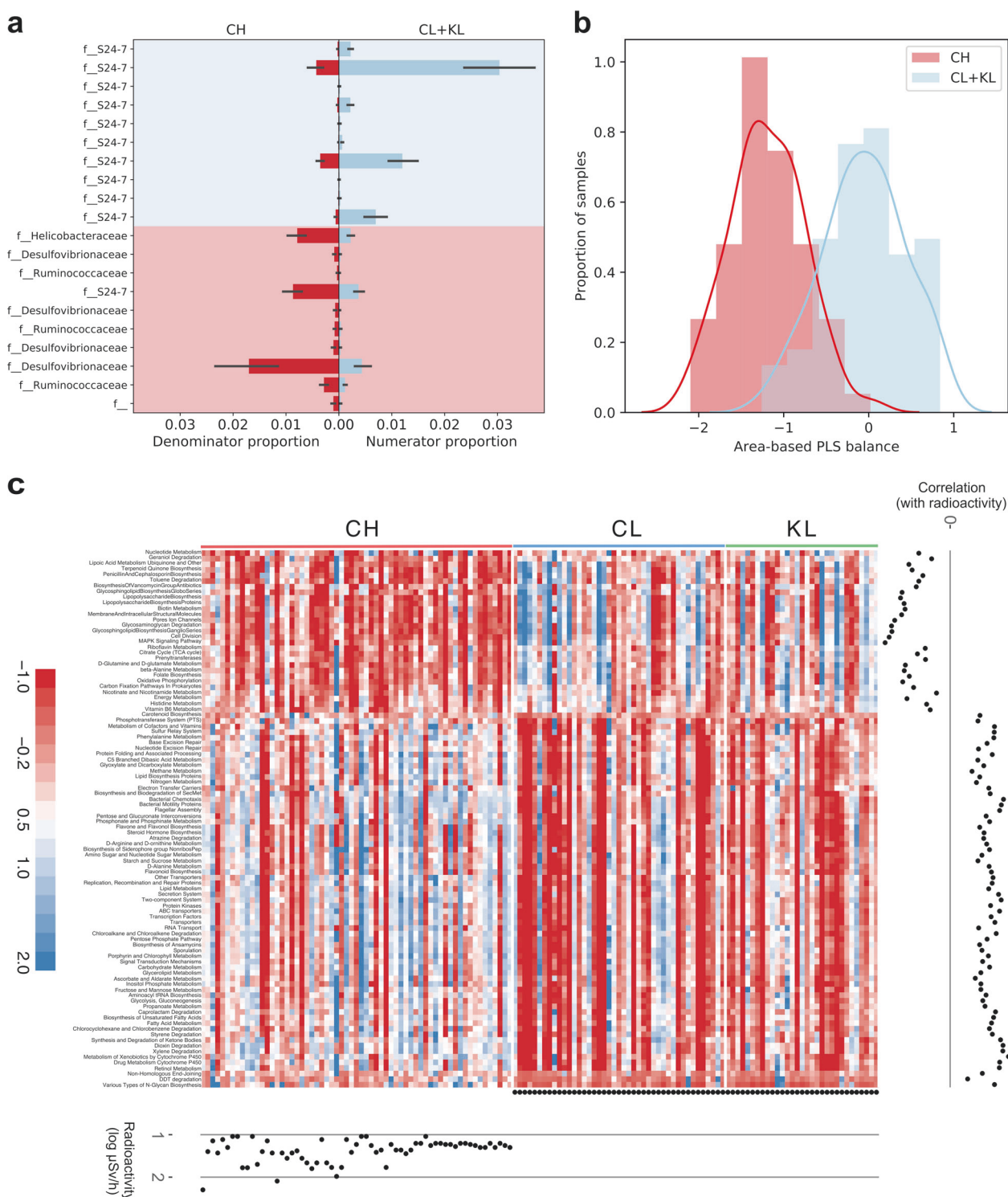


Fig. 2 Balance Trees analysis and PICRUST functional predictions for the bank vole gut microbiota. Partial least squares (PLS) balance analysis of **a** area-differentiated OTUs (shown are the proportions in the two groups of the top 10 OTUs in each group based on PLS score) and **b** classification of samples to study areas based on OTU composition. **c** Heat map of the KEGG level-3 functional pathways that

significantly differed between contaminated (CH) and both uncontaminated areas (CL and KL). Pathway counts were normalized as implemented in superheat v0.1.0 R package, abundance of each pathway is indicated by a gradient of color from red (low abundance) to blue (high abundance). Full lists of pathways associated with radiation exposure can be found in Supplementary Table 11

likely adaptive state in nature. Firmicutes tend to metabolize otherwise indigestible resistant starch (Clostridiales, Lactobacillales) and plant cell wall glycans (*Ruminococcaceae*, *Lachnospiraceae*) [26]. Bank voles inhabiting radioactively contaminated areas (CH) thus exhibit an apparent dietary shift, which is also supported by the inferred metabolic functions (Fig. 2c, Supplementary Table 11). There are no detailed biodiversity surveys of the CEZ and surrounding areas, but a change in diet associated with environmental radioactivity might reflect the reduced abundance of arthropods in the more contaminated areas within the CEZ [27]. Alternatively, bank voles inhabiting CH areas might actively increase the amount of plant-based foods to produce more of the end products of fermentation of dietary fiber (short-chain fatty acids, SCFAs) [28].

SCFAs can confer additional benefits to the host beyond energy harvest by acting as physiological and immune regulators [26, 29]. Gut bacteria that produce butyrate may protect against genotoxins as this SCFA affects DNA repair systems and antioxidant levels [30] and can reduce oxidative stress that is widely associated with animals inhabiting contaminated areas within the CEZ [10]. Butyrate is produced by many Firmicutes, specifically members of the Clostridiales, *Ruminococcaceae* and *Lachnospiraceae* [31], that are significantly more abundant in CH, but is rarely associated with the SCFA profiles of Bacteroidetes [26]. Enrichment of Firmicutes (Fig. 1a, b, Supplementary Table 6) thus is a plausible method of mitigating effects of elevated oxidative stress concomitant with inhabiting an area contaminated by radionuclides. This hypothesis warrants further studies that could quantify SCFAs profiles and thoroughly assess host diet.

In conclusion, bank voles exposed to anthropogenic environmental radiation experience substantial changes in the composition of their gut microbiota and major changes in bacterial function. Gut microbial composition can facilitate adaptation [32], and might be an important component of mounting an effective response to conditions within the CEZ. The positive and negative adaptive and health consequences of changes to wildlife gut microbiota remain to be quantified.

Acknowledgements We are grateful to Gennadi Milinevsky, Igor Chizhevsky, Serhii Kireyev, Anatoly Nosovsky, and Maksym Ivanenko for logistic support and help in organizing fieldwork. Kati Kivisaari, Sofia Sanchez, Zbyszek Boratynski, and Jenni Kesäniemi provided assistance during material collection. The Finnish Centre for Scientific Computing (CSC), and personally Kimmo Mattila, provided invaluable computing resources and technical support. The project was funded by the Academy of Finland (project numbers 287153 and 268670, to PCW and TM) and by an open-research doctoral program award (to AL) from the University of Oulu Graduate School. Additional support to TAM was provided by the Samuel Freeman Charitable Trust and by the Samuel Lawrence Foundation to LRT. JTM was supported under NSF-GRFP DGE-1144086.

Author contributions PCW, TM, and AL conceived the project design; AL, ET, TM, and PCW conducted field surveys and sample collection for the experiments. AL performed laboratory work and completed sequence analysis, with additional bioinformatics support provided by PW, LRT, JTM, and RK at later phases. AL wrote the manuscript with significant contributions from PCW, LRT, JTM, TAM, and APM and critical input from all other authors. The funders had no role in this study design, data collection and analysis, decision to publish, or preparation of the manuscript.

Compliance with ethical standards

Conflict of interest The authors declare that they have no conflict of interest.

Open Access This article is licensed under a Creative Commons Attribution 4.0 International License, which permits use, sharing, adaptation, distribution and reproduction in any medium or format, as long as you give appropriate credit to the original author(s) and the source, provide a link to the Creative Commons license, and indicate if changes were made. The images or other third party material in this article are included in the article's Creative Commons license, unless indicated otherwise in a credit line to the material. If material is not included in the article's Creative Commons license and your intended use is not permitted by statutory regulation or exceeds the permitted use, you will need to obtain permission directly from the copyright holder. To view a copy of this license, visit <http://creativecommons.org/licenses/by/4.0/>.

References

1. Yatsunenko T, Rey FE, Manary MJ, Trehan I, Dominguez-Bello MG, Contreras M, et al. Human gut microbiome viewed across age and geography. *Nature*. 2012;486:222–7.
2. Carmody RN, Gerber GK, Luevano JM, Gatti DM, Somes L, Svenson KL, et al. Diet dominates host genotype in shaping the murine gut microbiota. *Cell Host Microbe*. 2015;17:72–84.
3. Maurice CF, Cl Knowles S, Ladau J, Pollard KS, Fenton A, Pedersen AB, et al. Marked seasonal variation in the wild mouse gut microbiota. *ISME J*. 2015;9:2423–34.
4. Amato KR, Yeoman CJ, Kent A, Righini N, Carbonero F, Estrada A, et al. Habitat degradation impacts black howler monkey (*Alouatta pigra*) gastrointestinal microbiomes. *ISME J*. 2013;7:1344–53.
5. Claus SP, Guillou H, Ellero-Simatos S, Qin J, Spor A, Koren O, et al. The gut microbiota: a major player in the toxicity of environmental pollutants? *NPJ Biofilms Microbiomes*. 2016;2:16003.
6. Zhang A, Steen TY. Gut microbiomics—a solution to unloose the gordian knot of biological effects of ionizing radiation. *J Hered*. 2017;279:1718–22.
7. Lourenço J, Mendo S, Pereira R. Radioactively contaminated areas: bioindicator species and biomarkers of effect in an early warning scheme for a preliminary risk assessment. *J Hazard Mater*. 2016;317:503–42.
8. Møller AP, Mousseau TA. Biological consequences of Chernobyl: 20 years on. *Trends Ecol Evol*. 2006;21:200–7.
9. Jernfors T, Kesäniemi J, Lavrinienko A, Mappes T, Milinevsky G, Møller AP, et al. Transcriptional upregulation of DNA damage response genes in bank voles (*Myodes glareolus*) inhabiting the Chernobyl Exclusion Zone. *Front Environ Sci*. 2018;5:95. 10.3389/fenvs.2017.0009.

10. Einor D, Bonisoli-Alquati A, Costantini D, Mousseau TA, Møller AP. Ionizing radiation, antioxidant response and oxidative damage: a meta-analysis. *Sci Total Environ.* 2016;548:463–71.
11. Møller AP, Mousseau TA. Strong effects of ionizing radiation from Chernobyl on mutation rates. *Sci Rep.* 2015;5:8363.
12. Ragon M, Restoux G, Moreira D, Møller AP, López-García P. Sunlight-exposed biofilm microbial communities are naturally resistant to Chernobyl ionizing-radiation levels. *PLoS ONE.* 2011;6:e21764.
13. Ruiz-González MX, Czirájk GÁ, Genevoux P, Møller AP, Mousseau TA, Heeb P, et al. Resistance of feather-associated bacteria to intermediate levels of ionizing radiation near Chernobyl. *Sci Rep.* 2016;6:22969.
14. Romanovskaya VA, Sokolov IG, Rokitko PV, Chernaya NA. Effect of radioactive contamination on soil bacteria in the 10-km zone around the Chernobyl Nuclear Power Plant. *Microbiology.* 1998;67:226–31.
15. Morton JT, Sanders J, Quinn RA, McDonald D, Gonzalez A, Vázquez-Baeza Y, et al. (2017). Balance trees reveal microbial niche differentiation. *mSystems.* 2017;2. <https://doi.org/10.1128/mSystems.00162-16>.
16. Langille M, Zaneveld J, Caporaso JG, McDonald D, Knights D, Reyes J, et al. Predictive functional profiling of microbial communities using 16S rRNA marker gene sequences. *Nat Biotechnol.* 2013;31:814–21.
17. Parks BW, Nam E, Org E, Kostem E, Norheim F, Hui ST, et al. Genetic control of obesity and gut microbiota composition in response to high-fat, high-sucrose diet in mice. *Cell Metab.* 2013;17:141–52.
18. Møller AP, Mousseau TA. Are organisms adapting to ionizing radiation at Chernobyl? *Trends Ecol Evol.* 2016;31:281–9.
19. Chesser RK, Bondarkov M, Baker RJ, Wickliffe JK, Rodgers BE. Reconstruction of radioactive plume characteristics along Chernobyl's Western Trace. *J Environ Radioact.* 2004;71:147–57.
20. Kozakiewicz M, Chołuj A, Kozakiewicz A. Long-distance movements of individuals in a free-living bank vole population: an important element of male breeding strategy. *Acta Theriol (Warsz).* 2007;52:339–48.
21. Maurice CF, Haiser HJ, Turnbaugh PJ. Xenobiotics shape the physiology and gene expression of the active human gut microbiome. *Cell.* 2013;152:39–50.
22. Prakash D, Gabani P, Chandel AK, Ronen Z, Singh OV. Bioremediation: a genuine technology to remediate radionuclides from the environment. *Microb Biotechnol.* 2013;6:349–60.
23. Chesser RK, Sugg DW, Lomakin MD, van den Bussche RA, DeWoody JA, Jagoe CH, et al. Concentrations and dose rate estimates of ¹³⁴, ¹³⁷ cesium and ⁹⁰ strontium in small mammals at Chernobyl, Ukraine. *Environ Toxicol Chem.* 2000;19:305–12.
24. Daniel H, Gholami AM, Berry D, Desmarchelier C, Hahne H, Loh G, et al. High-fat diet alters gut microbiota physiology in mice. *ISME J.* 2014;8:295–308.
25. Macdonald DW. The encyclopedia of mammals. 3rd ed. Oxford University Press: Oxford, UK, 2007.
26. Koropatkin NM, Cameron EA, Martens EC. How glycan metabolism shapes the human gut microbiota. *Nat Rev Microbiol.* 2012;10:323–35.
27. Møller AP, Mousseau TA. Reduced abundance of insects and spiders linked to radiation at Chernobyl 20 years after the accident. *Biol Lett.* 2009;5. <https://doi.org/10.1098/rsbl.2008.0778>.
28. David LA, Maurice CF, Carmody RN, Gootenberg DB, Button JE, Wolfe BE, et al. Diet rapidly and reproducibly alters the human gut microbiome. *Nature.* 2014;505:559–63.
29. Rooks MG, Garrett WS. Gut microbiota, metabolites and host immunity. *Nat Rev Immunol.* 2016;16:341–52.
30. Hamer HM, Jonkers D, Venema K, Vanhoutvin S, Troost FJ, Brummer R-J. Review article: the role of butyrate on colonic function. *Aliment Pharmacol Ther.* 2007;27:104–19.
31. Bui TPN, Ritari J, Boeren S, de Waard P, Plugge CM, de Vos WM. Production of butyrate from lysine and the Amadori product fructoselysine by a human gut commensal. *Nat Commun.* 2015;6:10062.
32. Alberdi A, Aizpurua O, Bohmann K, Zepeda-Mendoza ML, Gilbert MTP. Do vertebrate gut metagenomes confer rapid ecological adaptation? *Trends Ecol Evol.* 2016;31:689–99.