



HAL
open science

In vivo MEMRI characterization of brain metastases using a 3D Look-Locker T1-mapping sequence

Charles Castets, Neha Koonjoo, Andreea Hertanu, Pierre Voisin, Jean-Michel Franconi, Sylvain Miraux, Emeline Ribot

► **To cite this version:**

Charles Castets, Neha Koonjoo, Andreea Hertanu, Pierre Voisin, Jean-Michel Franconi, et al.. In vivo MEMRI characterization of brain metastases using a 3D Look-Locker T1-mapping sequence. Scientific Reports, 2016, 6 (1), 10.1038/srep39449 . hal-02404151

HAL Id: hal-02404151

<https://cnrs.hal.science/hal-02404151>

Submitted on 11 Dec 2019

HAL is a multi-disciplinary open access archive for the deposit and dissemination of scientific research documents, whether they are published or not. The documents may come from teaching and research institutions in France or abroad, or from public or private research centers.

L'archive ouverte pluridisciplinaire **HAL**, est destinée au dépôt et à la diffusion de documents scientifiques de niveau recherche, publiés ou non, émanant des établissements d'enseignement et de recherche français ou étrangers, des laboratoires publics ou privés.

SCIENTIFIC REPORTS



OPEN

In vivo MEMRI characterization of brain metastases using a 3D Look-Locker T1-mapping sequence

Charles R. Castets, Néha Koonjoo, Andreea Hertanu, Pierre Voisin, Jean-Michel Franconi, Sylvain Miraux & Emeline J. Ribot

Received: 22 July 2016
Accepted: 22 November 2016
Published: 20 December 2016

Although MEMRI (Manganese Enhanced MRI) informations were obtained on primary tumors in small animals, MEMRI data on metastases are lacking. Thus, our goal was to determine if 3D Look-Locker T1 mapping was an efficient method to evaluate Mn ions transport in brain metastases *in vivo*. The high spatial resolution in 3D ($156 \times 156 \times 218 \mu\text{m}$) of the sequence enabled to detect metastases of 0.3 mm^3 . In parallel, the T1 quantitation enabled to distinguish three populations of MDA-MB-231 derived brain metastases after MnCl₂ intravenous injection: one with a healthy blood-tumor barrier that did not internalize Mn²⁺ ions, and two others, which T1 shortened drastically by 54.2% or 24%. Subsequent scans of the mice, enabled by the fast acquisition (23 min), demonstrated that these T1 reached back their pre-injection values in 24 h. Contrarily to metastases, the T1 of U87-MG glioma remained 26.2% shorter for one week. *In vitro* results supported the involvement of the Transient Receptor Potential channels and the Calcium-Sensing Receptor in the uptake and efflux of Mn²⁺ ions, respectively. This study highlights the ability of the 3D Look-Locker T1 mapping sequence to study heterogeneities (i) amongst brain metastases and (ii) between metastases and glioma regarding Mn transport.

Calcium is a ubiquitous second messenger that is necessary for tremendous activities especially in tumor cells. Roderick *et al.* and Prevarskaya *et al.* mentioned that the remodeling of calcium transport could be defined as a new cancer hallmark^{1,2}. Indeed, calcium ions are believed to have important roles in tumor cell proliferation and invasiveness^{3,4}. Consequently, detecting and quantifying the calcium pathways into cancer cells might increase the accuracy of diagnoses, and open the door to innovative therapy strategies.

One suitable technique that would allow the study of calcium pathways in intact living organisms along with highly resolved imaging is the Manganese-enhanced MRI (MEMRI) approach. MEMRI is a technique that uses manganese ions (Mn²⁺) as a positive MRI contrast agent. These ions are analogs to calcium ions, consequently they get internalized by cells through the same transport systems, enabling therefore the *in vivo* detection and location to where these two ions are accumulating. MEMRI has already been used to detect the neuro-architecture in rodents^{5–11}, to track the neuronal activation in mice¹² and to evaluate the extent of myocardial infarctions^{13–16}. Furthermore, several studies already demonstrated that MEMRI can be employed for oncology, to detect tumors over several stages¹⁷. Some have noted a difference in manganese uptake between malignant and normal cells¹⁸. Baio *et al.*¹⁹ detected a high accumulation of Mn²⁺ ions in breast cancer cells expressing high levels of the Calcium-Sensing Receptor (CaSR). Furthermore, a previous study has clearly demonstrated that Mn²⁺ uptake of three different cell lines was correlated to their proliferation rates *in vitro*²⁰. This study has been proven to be useful to evaluate proliferation of tumor cells *in vivo* after radiotherapy²¹.

Although the detection of Mn²⁺ ions *in vivo* brings anatomical information, it is also necessary to quantify the uptake, efflux and residual time of the contrast agent in order to follow longitudinally cancer cell activity and evaluate the efficiencies of therapeutic approaches. To do so, measuring the effect of Mn²⁺ ions on the longitudinal (T1) relaxation time seems to be a straightforward procedure as, at first, the T1 relaxation process is not affected by the heterogeneities in the magnetic field and second, the shortening of T1 relaxation time constant is dependent on the variation of the Mn²⁺ ion concentration. Several studies have measured the T1 in tumors after the injection of MnCl₂. The limitation of these studies was the acquisitions of T1 maps in 2D on a limited number of slices through the tumors^{21–23}. Only a few studies acquired T1 maps in 3D, with the main drawback of

Centre de Résonance Magnétique des Systèmes Biologiques, UMR5536, CNRS/Université de Bordeaux, 146 rue Léo Saignat, 33076 Bordeaux, France. Correspondence and requests for materials should be addressed to E.J.R. (email: ribot@rmsb.u-bordeaux2.fr)

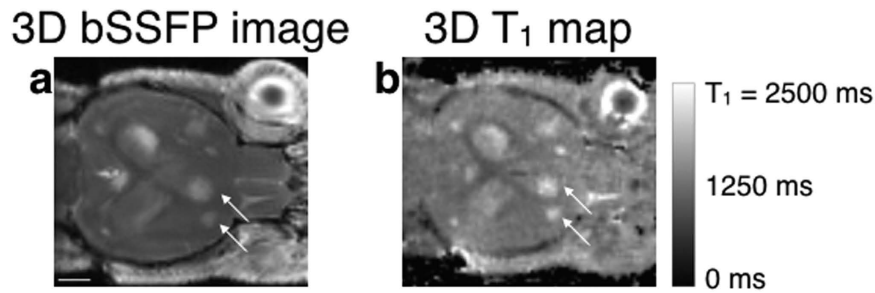


Figure 1. 3D bSSFP and 3D T₁ map of the brain of a mouse bearing metastases. Metastases detected on the bSSFP image (a) as hyper-intense areas are also detected on the T₁ map before injection (b), due to their longer T₁ than healthy brain. The two metastases pointed out (arrows) have drastically different volumes but similar T₁ values. The scale bar represents 2 mm.

long acquisition times: from 40 min²⁴ to ~2 h²⁵. In addition, all these published works used the Variable Flip Angle technique, that largely overestimates the T₁ values²⁶. Recently, Castets *et al.* developed a 3D T₁ mapping sequence combining the Look-Locker module with a spiral sampling that lasted only 12 min with a spatial resolution of 208 × 208 × 312 μm on the mouse's heart¹³. This type of sequence would be very useful to localize precisely Mn²⁺ ions within tumors, to follow the kinetics of Mn²⁺ ions in the tumors and finally to detect small early-growing metastases. Indeed, even though MEMRI has been used often to image primary tumors, there is a lack of MEMRI information on metastases. To date, these secondary tumors are getting tremendous interest due to the drop of patients' survival rate. For example, the 5-year survival rate for breast cancer patients is about 25% as from when the metastatic disease is diagnosed²⁷. This rate is affected by the increasing incidence of brain metastases²⁸.

Consequently, the goal of our study was to determine if 3D Look-Locker T₁ mapping could be an efficient and precise method to evaluate Mn ions transport in brain metastases *in vivo*. 3D T₁ maps were acquired on human breast cancer-derived brain metastases in mice, and the uptake and efflux of Mn²⁺ ions were compared between the metastases. Secondly, this protocol was applied on aggressive primary brain tumors implanted orthotopically so as to compare, in the brain environment, their behaviors with those of the metastases. *In vitro* experiments were then performed in an attempt to determine the implication of two main calcium-transporting proteins (the Transient Receptor Potential (TRP) channels and the Calcium-Sensing Receptor (CaSR)) in the *in vivo* MEMRI quantification.

Results

***In vivo* 3D spiral Look-Locker T₁ maps of metastases.** Figure 1 shows non enhanced 3D bSSFP images and the corresponding 3D T₁ maps of several brain metastases. All the metastases appeared with a bright signal on both sets of images. On the bSSFP images, the hyper signal was due to the T₂/T₁ contrast of the sequence and the watery composition of the metastases which also accounted for longer T₁ values on the 3D T₁ maps. Supplementary Figure 1 enables to appreciate the high spatial resolution of the T₁ maps, in the axial, coronal and sagittal orientations. A metastasis of less than 0.3 mm³ can thus be easily detected (arrow in Supplementary Figure 1b). The different structures of the brain, like the corpus callosum or the ventricles, can also be easily identified. Similar amounts of metastases were detected on both the bSSFP images and the 3D T₁ maps. A heterogeneity in the T₁ values was observed amongst the metastases within a mouse. Some had T₁ close to the one of the healthy brain (1276.5 ± 73.5 ms) whereas some had longer T₁ (appearing in bright on the T₁ maps). Consequently, the mean T₁ value was measured to be 1564.4 ms with a large standard deviation of 267.8 ms. It is important to note that the T₁ values were not in agreement with the metastasis volumes, as demonstrated with two metastases (Fig. 1 arrows) with similar T₁ values (1866 ms and 1769 ms) but with different volumes (0.9 mm³ and 0.3 mm³, respectively).

***In vivo* MEMRI of metastases using the 3D spiral Look-Locker T₁ maps.** After an intravenous injection of MnCl₂, 3D T₁ maps were acquired. Several metastases had their T₁ that dropped massively (by 54.2% ± 9.2) demonstrating that Mn²⁺ ions accumulated within the tumors (called Population « High » thereafter, Figs 2a and 3). Two other metastasis populations were found: a similar number of metastases took up Mn²⁺ ions but in a significant lesser extent (p < 0.01) than the metastases studied above (T₁ decreased by 24% ± 5, called Population « Medium », Fig. 3) and some metastases didn't have any significant change in their contrasts with the brain (called Population « Null », Figs 2b and 3). Populations « High » and « Medium » each represented around 36% of all the metastases studied. The metastases in Population « Null » were less numerous (29% of the total amount of metastases analyzed). Consequently, a wide range of T₁ values were measured immediately after injection: from 622 ms to 1361 ms.

There was no correlation between the pre-contrast T₁ and the intensity of T₁ shortening after MnCl₂ injection. Indeed, within the High population, metastases had pre-contrast T₁ values varying from 970 ms to 2306 ms.

The volume of the metastasis was not related to the ability to internalize Mn²⁺ ions. Indeed, two metastases of similar volumes (1.2 mm³ and 1 mm³ each) had their T₁ values very different right after the injection (739.1 ms and 1310 ms, respectively, Fig. 2 arrows).

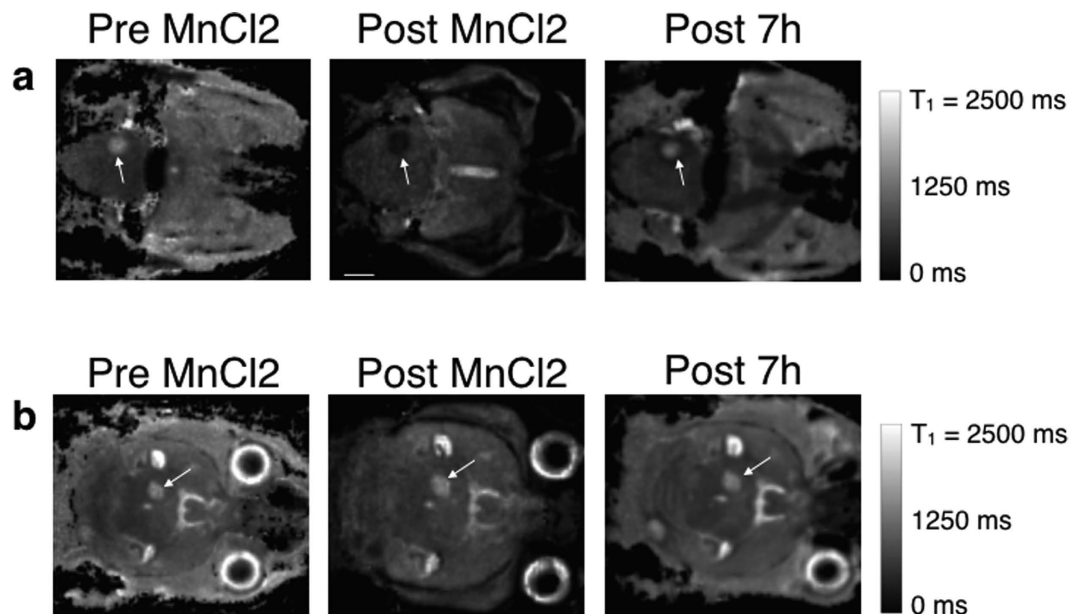


Figure 2. 3D T1 maps of a mouse brain with metastases over time after the MnCl₂ injection. Two slices showing two metastases (arrows) with similar volumes are shown. The metastasis in (a) took up Mn²⁺ ions, whereas the T1 of the metastasis pointed out in (b) remained stable over time. The scale bar represents 2 mm.

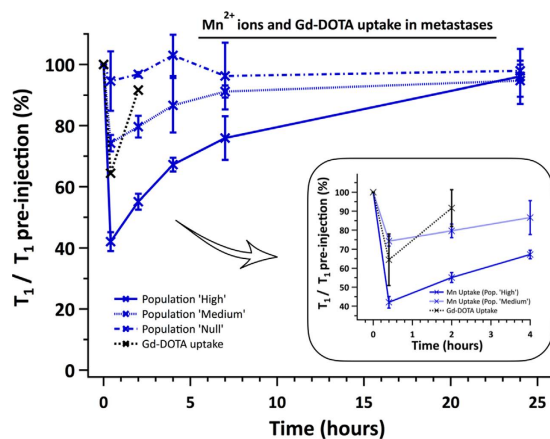


Figure 3. Graph showing the normalized T1 values in metastases over time after the injection of MnCl₂ or Gd-DOTA. The T1 post-injection were normalized to the T1 pre-injection. Three significantly different populations of metastases can be distinguished: one with an intact BTB (population « Null », dash-dot blue line), one which large (population « High », plain blue line) or moderate (population « Medium », dashed blue line) T1 decrease. The T1 values of populations « High » and « Medium » remained significantly different until 24 h post-injection ($p < 0.01$). These two latter populations took up Gd-DOTA, but couldn't be distinguished (insert, dashed black line). The T1 values reached back their pre-contrast values 2 h or 24 h post-injection, when Gd-DOTA or MnCl₂ was injected, respectively.

In vivo MEMRI of primary glioma tumors. The 3D T1 maps showed that 7 days after implantation, the mean T1 value of glioma was 1734 ± 107 ms (Fig. 4). Immediately after MnCl₂ injection, a significant decrease of $39\% \pm 8.8$ in T1 value was measured in the tumor ($p < 0.02$).

It was interesting to observe that a noticeable rim was detected 4 hours after the injection of MnCl₂. The rim had a $16.4\% \pm 3.1$ shorter T1 than the core of the glioma. The rim was detected for the entire week post-injection. Its T1 was $21.4\% \pm 2.3$, $20\% \pm 0.8$, $24.3\% \pm 0.7$, $20.6\% \pm 3.1$ and $8.7\% \pm 2.9$ shorter than the core at 8 h, 24 h, 48 h, 96 h and 1 week post-injection, respectively.

The clearance of the Mn²⁺ ions was very slow, as demonstrated on the kinetic curves, where the T1 values didn't attain the pre-injection values after 1 week (Fig. 5). Indeed, at one week post-injection, the T1 value of the primary tumors recovered at $77.4\% \pm 4.7$ of its pre-contrast value ($p < 0.02$).

In comparison, the T1 of the healthy brain cortex did not shortened more than 7% in 1 week (data not shown).

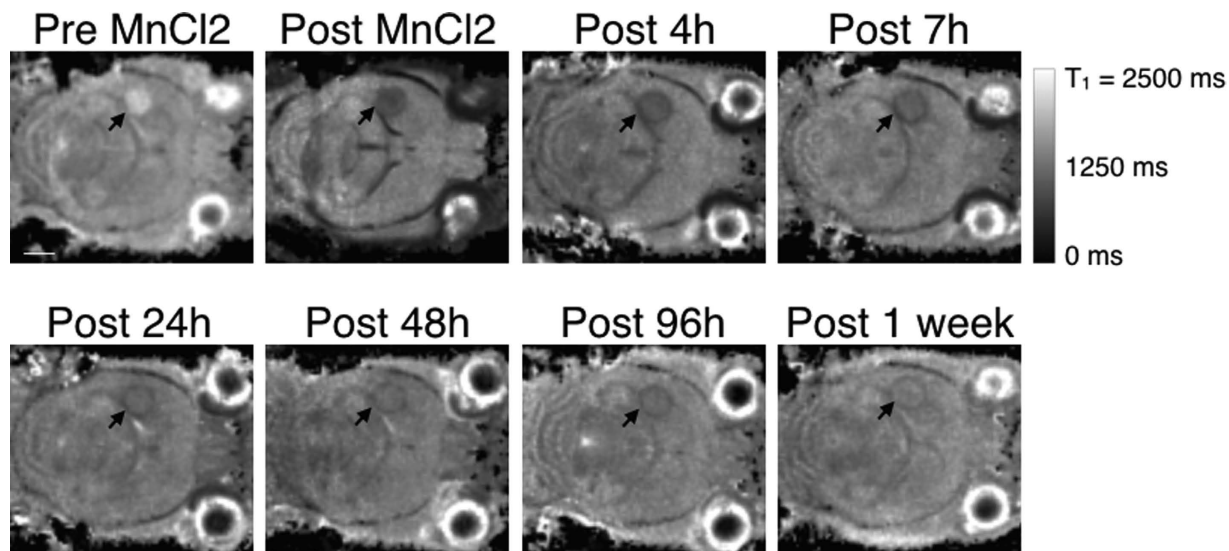


Figure 4. 3D T1 maps of the brain of a glioma-bearing mouse over time after the injection of MnCl₂. One slice from the 3D maps is shown at different time points: before, immediately after, 4 h, 7 h, 24 h, 48 h, 96 h and 1 week post-injection of MnCl₂. The arrow points out the glioma. The scale bar represents 2 mm.

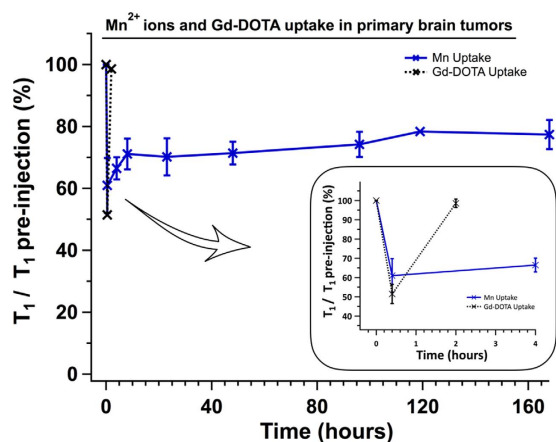


Figure 5. Graph showing the normalized T1 values in glioma over time after the injection of MnCl₂ or Gd-DOTA. The T1 post-injection values were normalized to the T1 pre-injection. No heterogeneity in glioma after MnCl₂ injection was observed (plain blue line). Contrarily to a fast clearance of Gd-DOTA (insert, dashed black line), Mn²⁺ ions were still present in the glioma after 1 week ($p < 0.02$).

MEMRI versus Gd-DOTA-enhanced MRI of metastases and glioma using the 3D spiral Look-Locker T1 maps. The commonly-used Gd-DOTA contrast agent to detect tumors was then intravenously injected in the mice. As shown in Fig. 6b, Gd-DOTA leaked into some metastases (inducing a 36% drop of their T1 values, $p < 0.01$) as demonstrated by the hypo-intense signal on the acquired 3D T1 maps post injection. Comparably with MEMRI obtained right after the injection of MnCl₂, only those metastases with a leaky vasculature could internalize Mn²⁺ ions. Metastases in Fig. 6c,d did not internalize either Mn²⁺ or Gd-DOTA. It is important to note that there was no correlation between the T1 values of the metastases before MnCl₂ injection and the permeability of the blood-tumor barrier (BTB). Indeed, two metastases with similar T1 before MnCl₂ injection (1252 ms and 1282 ms) belonged to the High and Null populations after injection, respectively.

Contrarily to the T1 of metastases that retrieved their initial values 24 hours post MnCl₂ injection, the clearance of Gd-DOTA was faster: the T1 values of the metastases returned back to $91.7\% \pm 9.7$ of their pre-injection values as soon as 2 hours post-injection (Fig. 3).

A similar pattern was measured in the glioma. Following Gd-DOTA injection, the T1 value in the glioma dropped by $48.6\% \pm 5$ ($p < 0.05$), and returned to its initial value within 2 hours after injection (Fig. 5).

In vitro MEMRI to study influx and efflux of Mn²⁺ ions in cancer cells. In order to evaluate the main route of Mn²⁺ ion uptake by the cancer cells, inhibition of the Transient Receptor Potential (TRP)

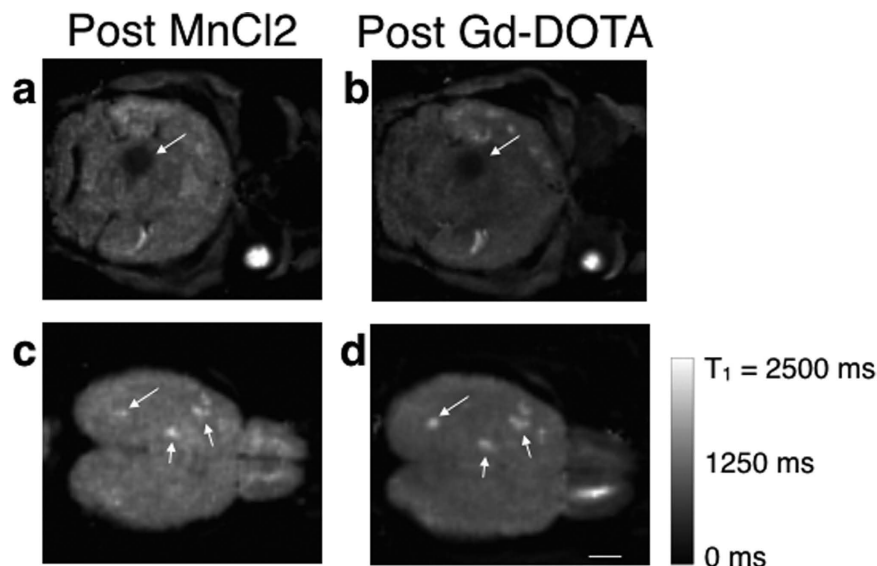


Figure 6. 3D T1 maps of mouse brains with metastases, immediately after the injection of MnCl₂ or Gd-DOTA. The metastases that internalized Mn²⁺ ions (arrow in **a**) were the ones that had a leaky vasculature (as shown by the short T1 value after Gd-DOTA injection in **b**). On the contrary, metastases with intact BTB didn't internalize Mn²⁺ or Gd-DOTA (arrows in **c** and **d**). The scale bar represents 2 mm.

| Treatments | MDA-MB-231Br metastatic cells | U87-MG glioma cells |
|------------|-------------------------------|---------------------|
| SKF-96365 | ↑ 44% ± 3.5 | ↑ 49% ± 8 |
| Verapamil | ↓ 34.1% ± 8.3 | 2.7% ± 4.8 |

Table 1. Percentages of lengthening or shortening on T1 values of the two different cell lines after the treatments with SKF-96365 or Verapamil, respectively. The T1 of MDA-MB-231Br cells and U87-MG cells at baseline were 2202 ± 78.9 ms and 2043.5 ± 138.2 ms, respectively.

channels using the broad spectrum blocker SKF-96365²⁹ was performed. This treatment induced a large increase in T1 values (around 50%) of both cancer cell lines as compared to untreated Mn²⁺-labeled cells (Table 1). Decreasing SKF-96365 concentrations reduced the T1 lengthening of both cell lines as a dose-dependent effect (Supplementary Figure 2a). On the contrary, incubating the cells with concentrations higher than 50 μM started to generate cytotoxicity.

Treatments with Verapamil were also performed in order to evaluate the role of the Calcium-Sensing Receptor (CaSR) in the release of Mn²⁺ ions out of the cancer cells¹⁹. This treatment enabled to retain Mn²⁺ ions into the metastatic cells, shown by a 34.1% T1 value shortening (Table 1). On the contrary, no significant change on the T1 value of the Mn²⁺-labeled U87-MG cells was measured. This absence of effect was observed even for increasing concentrations of Verapamil (Supplementary Figure 2b).

Discussion

This paper demonstrates for the first time that the MEMRI technique can be used to detect and study manganese transport in brain metastases.

The 3D T1 mapping protocol developed recently¹³ was used to quantify the T1 variations of brain metastases induced by the presence of Mn²⁺ ions *in vivo*. This sequence not only enabled the detection of Mn²⁺ ions like usual 3D T1-weighted MR sequences, but also, enabled to quantify the Mn²⁺ effects on T1 shortening over time. This is an asset when comparisons between tumors are necessary to evaluate the efficiency of a treatment. The high spatial resolution of the maps (156 × 156 × 218 μm) enabled to study metastases of less than 0.3 mm³. Furthermore, as demonstrated by Castets *et al.*, this sequence is robust and enables T1 measurements with high precision *in vivo*, due to the recording of 23 points along the longitudinal relaxation¹³. Indeed, most studies limit their T1 calculations with 3–5 points^{24,25,30}, decreasing the accuracy of the T1 values. In addition, the 3D T1 maps were acquired in less than 23 minutes with a high spatial resolution in the three dimensions. This is a real advantage compared to 2D mapping sequences for measuring T1 of small structures like metastases, without partial volume effects. In addition, as the magnetization doesn't reach back its equilibrium compared to the standard Look-Locker sequences, the TR could be shortened to consequently reduce acquisition time. Chuang *et al.* developed a fast 3D T1-mapping sequence using a Look-Locker module and EPI encoding³¹. In that study, the 3D T1 maps of a rat brain were obtained in 115 min for similar spatial resolutions to the current study. The spiral encoding used here enables to further accelerate acquisition time, to efficiently follow the evolution of a time-resolved biological process in small structures like metastases. Another advantage of this technique is its high sensitivity.

Indeed, the current method enabled to detect two degrees of Mn^{2+} uptake (amongst the metastases) and two rates of Mn release (between the metastases and the glioma).

Mn^{2+} ions can be used as an intracellular T1 contrast agent. However, as previously demonstrated by Hee Lee⁹, when intravenously injected, Mn^{2+} ions get into the brain through structures lacking a blood-brain barrier (BBB) like the pituitary gland. As a matter of fact, only metastases with leaky Blood-Tumor Barrier (BTB) were able to uptake Mn^{2+} ions. Similar results were obtained when Gd-DTPA was intravenously injected into brain metastases-bearing mice³². However, Gd-DTPA remains in the extracellular compartment, thus limiting its application to cell activity studies. Conversely, Mn^{2+} ions enabled to detect the BBB permeability and simultaneously evaluate calcium transport in metastases and tumors.

The 3D T1 maps demonstrated heterogeneities in the uptake of Mn^{2+} ions in metastases. This might be due to the fact that metastases started to appear at different days post-injection, as already observed by Perera *et al.*³³. Consequently, several metastasis grades might have been present within the same mouse. The High and Medium populations detected after MnCl₂ injection could not be distinguished when Gd-DOTA was injected. Indeed there was no difference in Gd-DOTA uptake amongst the metastases with leaky BTB, demonstrating that the permeability of the vasculature amongst the metastases was high enough to not limit the diffusion of Gd-DOTA (500 Da) and thus of Mn ions (55 Da). This is in agreement with a previous study that showed no correlation between the density and the permeability of the blood vessels present in MDA-MB-231Br metastases³⁴. Consequently, these differences measured amongst metastases can further involve the activity and/or expression of calcium pumps. As expected, TRP channels have an essential role in the Mn^{2+} ions uptake for both cell lines. This is in agreement with previous studies that show the role of TRP channels in the proliferation of these tumor cells^{35,36}.

Concerning the efflux of Mn^{2+} ions from the cancer cells, the *in vivo* measurements of T1 values demonstrated that there was a major difference between the glioma and the metastatic cells. Indeed, contrarily to a rapid clearance from the metastases (less than 24 hours), Mn^{2+} ions remained into the primary tumor cells for a week. In these glioma, an intratumoral heterogeneity was detected with T1 values shorter at the rim compared to the core. This observation is in agreement with a previous study that detected high angiogenic cell activities at the periphery of these tumors³⁷. As the T1 values of the healthy cortex did not vary significantly after the injection of MnCl₂ (data not shown), the spread of Mn^{2+} ions from healthy parts of the brain towards the glioma that could occur over time can be neglected.

The difference in clearance between brain metastases and glioma, might thus be explained by the activity of the Calcium-Sensing Receptors (CaSR). The measurements of the T1 values demonstrated a clear involvement of the CaSR in the efflux pathways of Mn^{2+} ions from the metastatic cells, but not in the glioma cells. These results are in agreement with previous studies demonstrating high expression of CaSR into the current cell line³⁸ and playing an important role into the vicious cycle of breast metastases in bones³⁹. Other potential factors may affect the long Mn^{2+} clearance observed in the brain tumors, like the binding of Mn^{2+} ions to the glutamine synthetase expressed in astrocytes⁴⁰.

One limitation of the current study is the inability to evaluate, through the T1 measurements, the effective contribution of intracellular Mn^{2+} ions versus Mn^{2+} ions complexed to extracellular molecules in the T1 values. Gianolio *et al.* determined that 64% of the MR signal was due to intracellular Mn ions in melanoma-bearing mice⁴¹. In our case, we can also expect a contribution of extracellular Mn ions in the T1 values that we measured. However, as the volumes of the metastases were not correlated to the T1 shortenings and to the permeability of the BTB, the involvement of the extracellular space in the sequestration of Mn ions might be negligible. Consequently, T1 comparisons between metastases are still relevant.

Another limitation of the current study is the inability to inject calcium transport inhibitors *in vivo*, in order to confirm the implications of TRP channels and CaSR in the Mn^{2+} ions uptake and release in the metastases. Stereotaxic injections in every metastases seem impractical. On one hand, one stereotaxic injection of the drugs in the brain would not ensure similar doses reaching the metastases. On the other hand, systemic administrations of the drugs would necessitate successive injections to maintain calcium pumps/channels inhibitions for several hours, that might affect the health of the animals, especially by their actions in organs like the heart.

In this study, only brain metastases were studied. Performing MEMRI experiments on hepatic or renal metastases might be hampered by the high Mn uptake from these organs participating in the clearance of the contrast agent⁴².

Finally, the last limitations come from the use of spiral encoding which is very challenging, especially because of the complex reconstruction process and the sensitivity to T₂* decay¹³.

In conclusion, this study showed for the first time the application of MEMRI on brain metastases. Due to the high spatial and temporal resolutions and the sensitivity of the T1 maps, the results clearly demonstrated that Mn^{2+} ions can be used to detect the leakiness of the tumor vasculature and at the same time to detect dysregulations of manganese transport *in vivo*. The results of the current work should give some insights for further investigations on the mechanisms of Mn^{2+} distribution in brain metastases to develop new therapeutic strategies against calcium transport in metastases.

Materials and Methods

Magnet and gradient system. All experiments were performed on a 7 Tesla Bruker Biospec system (Ettlingen, Germany) equipped with a gradient system capable of 660 mT/m maximum strength and 110 μs rise time. A volume resonator (75.4 mm inner diameter, active length 70 mm) operating in quadrature mode was used for excitation and a 4-element (2 × 2) phased array surface coil (outer dimensions of one coil element: 12 × 16 mm², total outer dimensions: 26 × 21 mm²) was used for signal reception.

Cell culture. The human breast cancer cell line (MDA-MB-231Br) and the U87-MG human glioma cells were cultured in DMEM (Dulbecco's Modified Eagle's Medium, Invitrogen) containing 10% FBS (fetal bovine serum) at 37°C and 5% CO₂.

Animal models. All experimental procedures were approved by the Animal Care and Use Institutional ethics committee of Bordeaux, France (Comité d'éthique pour l'Expérimentation Animale Bordeaux CEEA50 - approval n°5012032-A) and were performed in accordance with relevant guidelines and regulations.

Injection of brain metastatic cells. Female nu/nu mice (N = 6; 8 weeks old; weighing 20–25 g; Charles River Laboratories, L'Arbresle, France) were injected into the left ventricle of the beating heart with 100 µL suspension of 175,000 MDA-MB-231Br cells. Mice were scanned at different time points (at least 21 days after injection).

Implantation of primary brain tumors. The U87-MG cells were implanted in female nu/nu mice (N = 6, 8 weeks old, weighing 20–25 g; Charles River Laboratories, L'Arbresle, France) by stereotaxic injection into the striatum, as previously explained⁴³. The mice were scanned 7, 8, 9 and 11 days after tumor implantation.

In vivo imaging. In order to detect the brain metastases, a balanced Steady State Free Precession (bSSFP) sequence was first acquired using the following parameters: TE/TR = 2/4 ms; flip angle (FA) = 35°; FOV: 20 × 20 × 14; matrix: 128 × 128 × 64; Bandwidth: 586 Hz/pixel; Number of excitation = 4; 4 offset frequencies; total acquisition time = 9 min 20 s. This sequence was used as a gold standard for brain metastasis detection³³.

The sequence that was used to obtain 3D T1 maps was based on a stack-of-spiral Look-Locker sequence, as previously described by Castets *et al.*¹³. The following imaging parameters were used: TR/TE = 7.9/1 ms; excitation pulse: cardinal sine, 1 ms; FA = 10°; inversion pulse: gauss, 1 ms; matrix: 128 × 128 × 64; FOV: 20 × 20 × 14 mm; spatial resolution 156 × 156 × 218 µm; Bandwidth: 341 Hz/pixel; points per spiral readout: 878; readout time: 2.9 ms; 12 interleaves per stack of spirals; 64 stacks per k-space; acquisition time: 22 min. Twenty three 3D k-spaces were acquired at 23 inversion times, starting at 7.3 ms and separated by 142 ms.

T1 maps were acquired before and after an intravenous injection of 60 µL of 100 mM of MnCl₂. The injection was performed at a rate of 2 µL/min. Neurotoxicity caused by manganese can be an issue when using it as a contrast agent in animal studies. It has been shown that doses until 175 mg/kg injected intravenously do not induce toxicity⁹. In this work, a low dose of manganese (16.5 mg/kg) was injected.

Mice were anesthetized with isoflurane (1.5–2% in air). The animals were positioned within the magnet with the head placed at the center of the NMR coil. A monitoring system of physiologic parameter (SA Instruments, Inc, Stony Brook, NY, USA) enabled the visualization of the respiratory cycle. A T1 map was acquired before the injection, followed by subsequent T1 maps acquisitions at different time points: immediately after injection, at 4, 7, 24, 48, 96 hours and 1 week after injection for primary tumors and immediately after injection, 4, 7 and 24 hours after injection for metastases.

Gd-DOTA (DOTAREM, Guerbet) was also injected intravenously through a rapid bolus at a dose of 100 mM via the tail vein. This contrast agent was injected 24 h prior the injection of MnCl₂. 3D T1 maps were also acquired (with the same sequence as described above) before injection, immediately and 2 hours after injection.

In vitro experiments. Cells from the two cell lines were allowed to adhere in 6 cm-petri dishes for 3 days. Then, they were incubated with culture media containing either 100 µM of Verapamil (ab146680, Abcam) during 1 hour or 50 µM of SKF-96365 (Calbiochem, France) during 1 hour. Then, MnCl₂ (1 mM) was added into the medium for another 1 hour. Control cells were incubated only with MnCl₂ (1 mM) for 1 hour. After 3 washes using the Roswell Park Memorial Institute medium (RPMI, Invitrogen), the cells were collected and spun twice at 1000 rpm for 6 min. The pellets were then scanned at 7 T using the same MR sequence as the *in vivo* experiments (N = 16 experiments for each cell line).

Data analysis. The 3D T1 maps were reconstructed using an optimized equation for the sequence used in a previous study¹³ and implemented with Matlab (MathWorks, Natick, MA, USA).

Regions Of Interest (ROI) were manually drawn within 51 metastases (41 metastases from mice used only for the MEMRI experiments, 10 from mice injected with Gd-DOTA and subsequently MnCl₂) and 6 glioma (3 glioma from mice used only for the MEMRI experiments, 3 from mice injected with Gd-DOTA and subsequently MnCl₂). The T1 was measured as a mean of the T1 values of each voxel within a ROI.

In parallel, the volumes of all the metastases and the glioma were measured in ROIs manually drawn on every slide of the T1 maps where the metastases could be detected using Amira software (TGS, San Diego, CA, USA).

For the *in vitro* experiments, the T1 of SKF-96365-treated Mn-labeled cells was normalized to the T1 of Mn-labeled cells. Similarly, the T1 of Verapamil-treated Mn-labeled cells was normalized to the T1 of Mn-labeled cells. The percentages of T1 lengthening or shortening between treated and untreated Mn-labeled cells are shown in Table 1 and in Supplementary Figure 2.

Statistical analysis. The T1 values ± Standard Deviations were compared using the paired Student's t-test. P < 0.05 was considered a significant difference.

References

- Roderick, H. L. & Cook, S. J. Ca²⁺ signalling checkpoints in cancer: remodelling Ca²⁺ for cancer cell proliferation and survival. *Nature Rev. Cancer.* **8**, 361–375 (2008).
- Prevarskaya, N., Ouadid-Ahidouch, H., Skryma, R. & Shuba, Y. Remodelling of Ca²⁺ transport in cancer: how it contributes to cancer hallmarks? *Phil. Trans. R. Soc. B* **369**, 20130097 (2014).
- Prevarskaya, N., Skryma, R. & Shuba, Y. Calcium in tumour metastasis: new roles for known actors. *Nature Rev. Cancer.* **11**, 609–618 (2011).

4. Panner, A. & Wurster, R. D. T-type calcium channels and tumor proliferation. *Cell Calcium*. **40**, 253–259 (2006).
5. Aoki, I., Lin Wu, Y. J., Silva, A. C., Lynch, R. M. & Koretsky, A. P. *In vivo* detection of neuroarchitecture in the rodent brain using manganese-enhanced MRI. *NeuroImage*. **22**, 1046–1059 (2004).
6. Grünecker, B. *et al.* Fractionated manganese injections: effects on MRI contrast enhancement and physiological measures in C57BL/6 mice. *NMR Biomed*. **23**, 913–921 (2010).
7. Inoue, T., Majid, T. & Pautler, R. G. Manganese enhanced MRI (MEMRI): neurophysiological applications. *Rev. Neurosci.* **22**(6), 675–694 (2011).
8. Jackson, S. J. *et al.* Manganese-enhanced magnetic resonance imaging (MEMRI) of rat brain after systemic administration of MnCl₂: Hippocampal signal enhancement without disruption of hippocampus-dependent behavior. *Behavioural Brain Res.* **216**, 293–300 (2011).
9. Hee Lee, J., Silva, A. C., Merkle, H. & Koretsky, A. P. Manganese-enhanced Magnetic Resonance Imaging of mouse brain after systemic administration of MnCl₂: dose-dependent and temporal evolution of T1 contrast. *Magn. Reson. Med.* **53**, 640–648 (2005).
10. Silva, A. C., Hee Lee, J., Aoki I. & Koretsky, A. P. Manganese-enhanced magnetic resonance imaging (MEMRI): methodological and practical considerations. *NMR Biomed*. **17**, 532–543 (2004).
11. Watanabe, T., Natt, O., Boretius, S., Frahm, J. & Michaelis T. *In Vivo* 3D MRI staining of mouse brain after subcutaneous application of MnCl₂. *Magn. Reson. Med.* **48**, 852–859 (2002).
12. Yu, X., Wadghiri, Y. Z., Sanes, D. H. & Turnbull, D. H. *In vivo* auditory brain mapping in mice with Mn-enhanced MRI. *Nat. Neuroscience*. **8**, 961–968 (2005).
13. Castets, C. R. *et al.* Fast and robust 3D T1 mapping using spiral encoding and steady RF excitation at 7T: application to cardiac manganese enhanced MRI (MEMRI) in mice. *NMR Biomed*. **28**(7), 881–889 (2015).
14. Waghorn, B. *et al.* Monitoring dynamic alterations in calcium homeostasis by T1-weighted and T1-mapping cardiac manganese-enhanced MRI in a murine myocardial infarction model. *NMR Biomed*. **21**, 1102–1111 (2008).
15. Hu, T. C. C., Pautler, R. G., MacGowan, G. A. & Koretsky A. P. Manganese-Enhanced MRI of Mouse Heart During Changes in Inotropy. *Magn. Reson. Med.* **46**, 884–890 (2001).
16. Nordhoy, W. *et al.* Manganese ions as intracellular contrast agents: proton relaxation and calcium interactions in rat myocardium. *NMR Biomed*. **16**, 82–95 (2003).
17. Suero-Abreu, G. A. *et al.* *In vivo* Mn-enhanced MRI for early tumor detection and growth rate analysis in a mouse medulloblastoma model. *Neoplasia*. **16**, 993–1006 (2014).
18. Nofiele, J. T., Czarnota, G. J. & Cheng, H. L. M. Noninvasive Manganese-Enhanced Magnetic Resonance Imaging for Early Detection of Breast Cancer Metastatic Potential. *Mol. Imaging*. **13**, (2014).
19. Baio, G. *et al.* *In vivo* imaging of human breast cancer mouse model with high level expression of calcium sensing receptor at 3T. *Eur. Radiol.* **22**, 551–558 (2012).
20. Braun, R. D., Bissig, D., North, R., Vistisen, K. S. & Berkowitz B. A. Human tumor cell proliferation evaluated using manganese-enhanced MRI. *PLoS One* **7**(2), e30572, doi: 10.1371/journal.pone.0030572 (2012).
21. Saito, S. *et al.* Manganese-enhanced MRI reveals early-phase radiation-induced cell alterations *in vivo*. *Cancer Res.* **73**(11), 3216–3224 (2013).
22. Hasegawa, S. *et al.* Molecular imaging of mesothelioma by detection of manganese- superoxide dismutase activity using manganese-enhanced magnetic resonance imaging. *Int. J. Cancer.* **128**, 2138–2146 (2011).
23. Seshadri, M. & Hoy, A. Manganese-enhanced MRI of salivary glands and head and neck tumors in living subjects. *Magn. Reson. Med.* **64**, 902–906 (2010).
24. Ganesh, T., Mokhtari, R. B., Alhamami, M., Yeager, H. & Cheng, H. L. M. Manganese-enhanced MRI of minimally gadolinium-enhancing breast tumors. *J. Magn. Reson. Imaging.* **41**, 806–813 (2015).
25. Alhamami, M. *et al.* Manganese-enhanced magnetic resonance imaging for early detection and characterization of breast cancers. *Mol. Imaging.* **13**, 1–8 (2014).
26. Stikov, N. *et al.* On the accuracy of T1 mapping: searching for common ground. *Magn. Reson. Med.* **73**, 514–522 (2015).
27. Steeg, P. S. Targeting metastasis. *Nature Rev. Cancer.* **26**, 201–218 (2016).
28. Weil, R. J., Palmieri, D. C., Bronder, J. L., Stark, A. M. & Steeg, P. S. Breast cancer metastasis to the central nervous system. *Am. J. Pathol.* **167**, 913–920 (2005).
29. Harteneck, C., Klose, C. & Krautwurst, D. Synthetic modulators of TRP channel activity (ed. Islam, M. S.) 87–106 *Transient Receptor Potential Channels, Advances in Experimental 87 Medicine and Biology* 704, doi: 10.1007/978-94-007-0265-3_4.
30. Coolen, B. F. *et al.* Three-dimensional T1 mapping of the mouse heart using variable flip angle steady-state MR imaging. *NMR Biomed*. **24**, 154–162 (2011).
31. Chuang, K. H. & Koretsky, A. Improved Neuronal Tract Tracing using Manganese Enhanced Magnetic Resonance Imaging with Fast T1 Mapping. *Magn. Reson. Med.* **55**, 604–611 (2006).
32. Percy, D. B. *et al.* *In Vivo* Characterization of changing blood-tumor barrier permeability in a mouse model of breast cancer metastasis: a complementary Magnetic Resonance Imaging approach. *Inv. Radiol.* **46**(11), 718–725 (2011).
33. Perera, M. *et al.* *In Vivo* Magnetic Resonance Imaging for Investigating the Development and Distribution of Experimental Brain Metastases due to Breast Cancer. *Transl. Oncol.* **5**, 217–225 (2012).
34. Lockman, P. R. *et al.* Heterogeneous Blood–Tumor Barrier Permeability Determines Drug Efficacy in Experimental Brain Metastases of Breast Cancer. *Clin Cancer Res.* **16**, 5664–5678 (2010).
35. Aydar, E., Yeo, S., Djamgoz, M. & Palmer, C. Abnormal expression, localization and interaction of canonical transient receptor potential ion channels in human breast cancer cell lines and tissues: a potential target for breast cancer diagnosis and therapy. *Cancer Cell Int.* **9**(23), doi: 10.1186/1475-2867-9-23 (2009).
36. Ding, X. *et al.* Essential Role of TRPC6 Channels in G2/M Phase Transition and Development of Human Glioma. *J. Natl. Cancer Inst.* **102**, 1052–1068 (2010).
37. Claes, A. *et al.* Magnetic resonance imaging-based detection of glial brain tumors in mice after antiangiogenic treatment. *Int. J. Cancer.* **122**, 1981–1986 (2008).
38. Sanders, J. L. *et al.* Extracellular Calcium-Sensing Receptor expression and its potential role in regulating parathyroid hormone-related peptide secretion in human breast cancer cell lines. *Endocrinol.* **141**, 4357–4364 (2000).
39. Joekel, E. *et al.* High calcium concentration in bones promotes bone metastasis in renal cell carcinomas expressing calcium-sensing receptor. *Mol. Cancer.* **13**(42), doi: 10.1186/1476-4598-13-42 (2014).
40. Wedler, F. C. & Denman, R. B. Glutamine synthetase: the major Mn (II) enzyme in mammalian brain. *Curr Top Cell Regul.* **24**, 153–169 (1984).
41. Gianolio, E. *et al.* MEMRI and tumors: a method for the evaluation of the contribution of Mn (II) ions in the extracellular compartment. *NMR Biomed*. **28**(9), 1104–1110 (2015).
42. Ni, Y. *et al.* Comparison of Manganese biodistribution and MR contrast enhancement in rats after intravenous injection of MnDPDP and MnCl₂. *Acta Radiol.* **38**, 700–707 (1997).
43. Ribot, E. J. *et al.* *In vivo* MR tracking of therapeutic microglia to a human glioma model. *NMR Biomed*. **24**, 1361–1368 (2011).

Acknowledgements

This work was supported by a public grant, Translational Research and Advanced Imaging Laboratory, which is part of the French National Research Agency's Investments for the Future Program ("NewFISP"; ANR-10-LABX-57) and by the Ligue Contre le Cancer, Comité des Landes.

Author Contributions

E.J.R. wrote the main manuscript text; C.R.C., N.K., P.V., J.M.F., S.M. and E.J.R. reviewed the manuscript; N.K., A.H. and E.J.R. performed the experiments; N.K. and E.J.R. prepared the figures.

Additional Information

Supplementary information accompanies this paper at <http://www.nature.com/srep>

Competing financial interests: The authors declare no competing financial interests.

How to cite this article: Castets, C. R. *et al.* In vivo MEMRI characterization of brain metastases using a 3D Look-Locker T1-mapping sequence. *Sci. Rep.* **6**, 39449; doi: 10.1038/srep39449 (2016).

Publisher's note: Springer Nature remains neutral with regard to jurisdictional claims in published maps and institutional affiliations.



This work is licensed under a Creative Commons Attribution 4.0 International License. The images or other third party material in this article are included in the article's Creative Commons license, unless indicated otherwise in the credit line; if the material is not included under the Creative Commons license, users will need to obtain permission from the license holder to reproduce the material. To view a copy of this license, visit <http://creativecommons.org/licenses/by/4.0/>

© The Author(s) 2016