



**HAL**  
open science

## **Sustained corticosterone rise in the prefrontal cortex is a key factor for chronic stress-induced working memory deficits in mice**

Gaëlle Dominguez, Nadia Henkous, Thomas Prevot, Vincent David, Jean-Louis Guillou, Catherine Belzung, Nicole Mons, Daniel Béracochéa

### ► To cite this version:

Gaëlle Dominguez, Nadia Henkous, Thomas Prevot, Vincent David, Jean-Louis Guillou, et al.. Sustained corticosterone rise in the prefrontal cortex is a key factor for chronic stress-induced working memory deficits in mice. *Neurobiology of Stress*, 2019, 10, pp.100161. <10.1016/j.ynstr.2019.100161>. <hal-03087310>

**HAL Id: hal-03087310**

**<https://cnrs.hal.science/hal-03087310v1>**

Submitted on 22 Oct 2021

**HAL** is a multi-disciplinary open access archive for the deposit and dissemination of scientific research documents, whether they are published or not. The documents may come from teaching and research institutions in France or abroad, or from public or private research centers.

L'archive ouverte pluridisciplinaire **HAL**, est destinée au dépôt et à la diffusion de documents scientifiques de niveau recherche, publiés ou non, émanant des établissements d'enseignement et de recherche français ou étrangers, des laboratoires publics ou privés.



Distributed under a Creative Commons CC BY-NC 4.0 - Attribution - Non-commercial use - International License

**Sustained corticosterone rise in the prefrontal cortex is a key factor for chronic stress-induced working memory deficits in mice.**

Dominguez Gaelle<sup>1,2</sup>, Henkous Nadia<sup>1</sup>, Prevot Thomas<sup>1</sup>, David Vincent<sup>1</sup>, Guillou Jean-Louis<sup>1</sup>, Belzung Catherine<sup>2</sup>, Mons Nicole<sup>1#</sup> and Béracochéa Daniel<sup>1\*#</sup>

<sup>1</sup>Université de Bordeaux, CNRS UMR 5287, 33615 Pessac, France, <sup>2</sup>Université François Rabelais, Inserm U930, Parc Grandmont, 37200 Tours, France.

Short Title: Chronic stress and brain-region specific corticosterone response

# The authors contributed equally to this work

\* Corresponding author

Dr. Daniel Béracochéa, Université de Bordeaux, INCIA CNRS UMR 5287, Bat B2, Allée Geoffroy St Hilaire, CS 50023, 33615 Pessac, France. E-mail: [daniel.beracochea@u-bordeaux.fr](mailto:daniel.beracochea@u-bordeaux.fr). Phone : (33)5 40 00 24 39

**Keywords:** Stress; prefrontal cortex; hippocampus; glucocorticoids; working memory.

**Fundings:** This study was financially supported by the CNRS and by a grant from the “Fondation pour la Recherche en Alcoologie (FRA), France # 2017/02” attributed to DB and NM.

**Declarations of interest:** none

**Abstract (246 words)**

Exposure to prolonged, unpredictable stress leads to glucocorticoids-mediated long-lasting neuroendocrine abnormalities associated with emotional and cognitive impairments. Excessive levels of serum glucocorticoids (cortisol in humans, corticosterone in rodents) contribute notably to deficits in working memory (WM), a task which heavily relies on functional interactions between the medial prefrontal cortex (PFC) and the dorsal hippocampus (dHPC). **However, it is unknown whether stress-induced increases in plasma corticosterone mirror corticosterone levels in specific brain regions critical for WM.** After a 6 week-*UCMS* exposure, C57BL/6J male mice exhibited increased anxiety- and depressive-like behaviors when measured one week later and displayed WM impairments timely associated with increased plasma corticosterone response. In chronically stressed mice, basal phosphorylated/activated CREB (pCREB) was markedly increased in the PFC and the CA1 area of the dHPC and WM testing did not elicit any further increase in pCREB in the two regions. Using microdialysis samples from freely-moving mice, we found that **WM testing** co-occurred with a rapid and sustained increase in corticosterone response in the PFC while there was a late, non-significant rise of corticosterone in the dHPC. The results also show that non-stressed mice injected with corticosterone (2mg/kg i.p.) before **WM testing** displayed behavioral and molecular alterations similar to those observed in stressed animals while a **pre-WM testing** metyrapone injection (35mg/kg i.p.), a corticosterone synthesis inhibitor, prevented the effects of *UCMS* exposure. Overall, the abnormal regional increase of corticosterone concentrations mainly in the PFC emerges as a key factor of enduring WM dysfunctions in *UCMS*-treated animals.

## **1. Introduction**

Major depression, a pathology that can be triggered by chronic psychosocial stress in vulnerable subjects (Kendler et al., 2001), is characterized by mood disturbance, anhedonia, weight changes and sleep disturbance. Depression is also known to be associated with attention, learning and memory disturbances. Indeed, depressed patients show disrupted functional connectivity between the hippocampus (HPC) and the prefrontal cortex (PFC) (Geng et al., 2016).

At a neuroendocrine level, patients with severe depressive disorders are characterized by dysfunctional hypothalamic-pituitary-adrenal (HPA) axis (Nestler et al., 2002; Tanti and Belzung, 2013) and abnormal hypersecretion of glucocorticoids (GCs) hormones (corticosterone in rodents and cortisol in humans). The PFC and the HPC are particularly sensitive to the prolonged exposure to a high concentration of GCs and play an important role in mediating the effects of chronic stress on cognition. Studies using rodent models have shown that chronic stress and accompanying elevation of GCs dramatically impact the functioning of the PFC and the dHPC, especially through dendritic atrophy and/or remodeling and reduced synaptic connectivity (For review, Willner, 2016). Prolonged exposure to corticosterone also causes alterations of many different neurotransmitters systems or of their receptors density and affinity (Drevets, 2000; Yuen et al., 2012), as well as neurogenesis in the HPC (Tanti and Belzung, 2013). These structural and functional brain changes ultimately result in altered synaptic plasticity and cognitive impairments in HPC- and PFC-dependent memory tasks (McEwen, 2002; Sandi, 2004; Touyarot et al., 2004), including spatial working memory (WM) tasks. In humans, the pharmacological (hydrocortisone administration) or pathological (Cushing's disease) increases of cortisol can result in long-lasting spatial WM impairments (Lupien, 1999; Starkman et al., 2001; Patil et al., 2007; Luethi et al., 2009). This view is also supported by findings reporting that the administration of corticosterone or local infusion of GC receptor (GR) agonist mimics the stress-related WM impairment in rodents (Roosendaal et al., 2004; Cerqueira et al., 2005; Arsten, 2009).

However, it is unclear whether the elevation of plasma corticosterone in response to a stressor in rodent models of depression accurately reflects enhanced corticosterone concentrations in specific brain regions. Some studies already reported that plasma and brain corticosterone responses display distinct temporal dynamics after exposure to stress (Droste et al., 2008; Heinzmann et al., 2010). For example, stress resulting from prolonged alcohol consumption and withdrawal elicited abnormal increases in corticosterone concentrations specifically in the prelimbic (PL) region of the PFC and the dorsal HPC (dHPC), while plasma concentrations remained unchanged (Little et al., 2008; Dominguez et al., 2017).

Studies in rodents have reported brain region-specific differences in translocation patterns of GC receptors in response to behavioral stress or corticosterone administration (Sarabdjitsingh et al., 2009; Caudal et al., 2014). Previously, we evidenced that acute footshock stress induces persistent and distinct corticosterone rises along the dorsal and ventral axis of the HPC at a time at which plasma levels were already returned to baseline (Dorey et al., 2012). From these findings, we hypothesized that such enduring region-specific changes of corticosterone within the PFC and the dHPC might play an important role in the effects of chronic stress exposure on cognition and emotional changes.

To that aim, this study attempted to determine the temporal dynamics of corticosterone patterns in the PL subregion of the PFC and dHPC in relation with chronic stress-induced behavioral and molecular alterations. To address this issue, we used the unpredictable chronic mild stress paradigm (*UCMS*), which induces behavioral, cognitive and biological alterations, paralleling the human pathological condition (Belzung and Surget, 2008). Using intracerebral microdialysis, we first assessed whether chronically-stressed mice displayed region-specific changes of corticosterone responses during WM testing in the PFC and the dHPC, the key regions for HPA axis GC feedback. We also examined whether chronic stress affected the activation/phosphorylation of the transcription factor cAMP-response element binding (CREB) in the PFC and in the CA1 area of the dHPC 30min after the beginning of WM testing. Numerous studies have reported that an increase in activated/phosphorylated level of CREB (pCREB) is a key regulator in the formation, consolidation, and enhancement of memory (for review, Kida and Serita, 2014). Altered activation of the cAMP-Protein kinase A (PKA)-CREB signaling cascade in specific brain regions has been implicated in behavioral models of anxiety and depression (Kuipers et al., 2003; Tardito et al., 2006). Accordingly, we have recently provided evidence that one route by which persistent rise of prefrontal corticosterone concentration induces anxiety-like behaviors and WM deficits long after the cessation of prolonged alcohol consumption may be through sustained decreased activity of the PKA-CREB signaling cascade (Dominguez et al., 2017). Given our previous data, we further intended in the present paper to examine the effects of a single injection of corticosterone administrated to non-stressed mice 30min before WM testing or, inversely, of a single, pre-testing injection of metyrapone (an inhibitor of corticosterone synthesis) administrated to chronically stressed mice on WM performance and region-specific pCREB expression. Our data indicate that the PFC and the dHPC differ in their sensitivity to chronic stress exposure and that abnormal sustained rise of corticosterone specifically in the PFC emerges as a key factor of chronic stress-induced behavioral deficits.

## **2. Materials and Methods**

### **2.1 Animals.**

Male C57BL/6J mice (24 weeks old; Charles River, L'Arbresle, France) were housed by groups of 10 mice until they were 9 months-old. All mice were maintained at 22±1°C, under a 12:12 light-dark cycle (lights on at 7:00 AM). They were provided with food and water ad libitum. During the whole *UCMS* period, mice were randomly assigned into 2 groups: the *UCMS* mice (N= 65) were kept alone (cage size: 27X10X12 cm) whereas mice that did not undergo *UCMS* exposure (non-stressed, N= 82) were kept 4-5 per cage (cage size: 30X20X12 cm) and housed in a separate room having no contact with the stressed mice (**Fig.1A**). All experimental procedures were performed between 8:00 and 12:00 AM to avoid any side effects of the circadian rhythm on GCs levels (Ottenweller et al., 1979; Coleman et al., 2016). All procedures were approved by the local Ethics Committee for Animal Experiments (N° 501-20-89) and were performed in accordance with the European Communities Council Directive of 1st February 2013 (2010/63/EU).

### **2.2 *UCMS* paradigm**

The *UCMS* procedure was conducted during 6 consecutive weeks as previously described (Belzung and Surget, 2008). The stressors consisted in alterations of the bedding (repeated changes, sawdust removal, damp sawdust, placement in a cage with water), cage-tilting, switching cages), and restraint stress. Body weight and coat state were assessed weekly. Coat state index, which is an index of general physical state, was evaluated on seven different body parts as previously described (Griebel et al., 2002; Surget et al., 2008). Briefly, the state of their coat was evaluated on 7 body parts (head, neck, back, ventral coat, hind paws, forepaws and tail). All parts were scored as a function of the deterioration state (0 for a good state, 0.5 for a mild deterioration and 1 for an important deterioration). The final score was obtained by adding the scores for each body part and dividing by the total number of body parts. After the 6 week-*UCMS* exposure, the *UCMS* and NS mice were handled daily (5min per day) throughout the one week rest period to minimize the effects of non-specific stress.

### **2.3 Behavioral tests**

**2.3.1 Elevated plus maze.** The elevated plus-maze task was performed to assess anxiety-like behavior. Mice were placed in the centre intersection for 30s in a cylinder to allow first orientation in the maze at random. Then, they were allowed to freely explore the maze for 10min. Animal behavior was recorded using an automated tracking system (Videotrack, Champagne au Mont d'Or, France), allowing measurements of the time and

distance (m) spent by area. An entry was counted only when a mouse entered an arm with all four paws. The time or distance spent in the open arms divided by the total time or distance spent in all arms of the maze was used to measure anxiety-like behavior during the first and second 5-min blocks. The smaller are the ratios, the more “anxious” is the mouse. After each trial, mice were placed back in their home cage with littermates.

**2.3.2 Hole board exploration.** Insofar as the alternation behavior used to evaluate WM is based on innate exploratory tendency, we evaluated the spontaneous exploratory activity in a hole-board apparatus. Each mouse was allowed to explore the hole-board apparatus (45 × 45 × 30 cm) for 10 min. The hole-board apparatus was made of white acrylic plate with 8 holes (3 cm in diameter, arranged in 3 × 3). Photoelectric cells were inserted in each hole, allowing automatic recordings of the number of head-dips performed in each hole.

**2.3.3 Working memory task.** After a one-week rest period, *UCMS* and non-stressed mice were trained on a sequential alternation task over a series of successive trials in a T-maze (**Fig. 2A**). Repetitive testing constitutes a potent source of proactive interference. From trial to trial, accurate performance at a given trial (N) requires for subjects to be able to discriminate the specific target trial N-1 from the interfering trial N-2. The target information required for successful performance varies from trial to trial, so that the subject is not only required to keep temporarily in short-term memory specific information, but also to reset it over successive runs. The resetting mechanisms and cognitive flexibility required to alternate over successive runs are major components of WM processes. WM is a component of the sequential alternation task, since SA rates are dependent on the length of the intertrial delay interval (ITI), and/or the place of the trial in the series (Vandesquille et al., 2013).

Animals were first submitted to two free habituation sessions on two successive days (one session of 10 min per day) in order to familiarize them to the apparatus and the allocentric spatial cues. During this phase, all doors of the T-maze were open and the mice were free to explore the apparatus. On the third day, the training phase consisted of seven successive trials separated by a 30-sec inter-trial interval (ITI). At each trial, the mouse was placed in the start box for 30-sec ITI before the door to the stem was opened. When the subject entered one of the goal arms, the door to that arm was closed and the choice was recorded. After a 30-sec confinement period into the chosen arm, the mouse was placed back in the start box for a new trial. To avoid olfactory cues in the apparatus, visible traces of urine and feces were washed with water.

**Test session.** Since no sequential alternation deficits were observed among groups in the training phase, mice were submitted 24-h later to the same procedure but with a 90-sec ITI. Lengthening the ITI increases delay-dependent interference over the series (Vandesquille et al., 2013). An alternation response was scored each time

the subject entered the arm opposite to the one visited on the immediate preceding trial. Alternation rate was calculated taking into account the successive trials, and expressed in percentage relative to the maximal alternation rate of 100 % (obtained when the subject never returned into the same arm over two consecutive trials). To dissociate memory deficit from an eventual progressive loss of motivation to alternate over the series, an 8th trial was added which was separated by a shorter ITI (5-sec) from the 7<sup>th</sup> one. Indeed, if alternation deficits depended on delay-dependent memory processes and not of motivation to alternate, then reducing the length of the ITI between the 7<sup>th</sup> and 8<sup>th</sup> trial should result in an increased alternation rate at the 8<sup>th</sup> trial.

## **2.4 Plasma and intracerebral corticosterone assays**

**2.4.1 Plasma corticosterone.** Blood samples were collected by sub-mandibular procedure with 25 gauge needles after anesthesia (Isoflurane<sup>®</sup>) in mice left undisturbed (baseline condition) or 30-min after the beginning of WM testing (Test condition). The blood was collected and serum was separated and stored at -80°C until analysis.

**2.4.2 Intracerebral microdialysis.** Mice were anesthetized with ketamine (100mg/Kg; body weight, i.p.) and xylazine (10mg/kg; body weight, i.p.) (Bayer, Wuppertal, Germany) and implanted unilaterally with a guide-probe of microdialysis (CMA/7 Microdialysis, Sweden) above the PL (anteroposterior + 1.9mm, lateral  $\pm$  0.3mm and depth 1.2mm; from Bregma) and the CA1 region of the dHPC (dCA1: anteroposterior -2mm, mediolateral  $\pm$ 1.4mm, dorso-ventral -0.9mm; from Bregma) (Paxinos and Franklin, 2001). The habituation and stabilization phases were performed as described in our earlier study (Dominguez et al., 2014; Dorey et al., 2012). The baseline dialysates were collected every 15-min before (60-min), during (30-min) and after (90-min) WM testing. During behavioral testing, the removable swivel bracket was placed above the maze allowing the mouse to move freely; then the swivel bracket was replaced above the dialysis bowl at the end of testing. All dialysates (collected between 8 and 12 am) were stored at -80°C until corticosterone measurements. Plasma and dialysate corticosterone concentrations were quantified using a commercially Enzyme Immunoassay kit (Correlate-EIATM, Assay Designs, Ann Arbor, MI). The sensitivity of the assay was 0.08nmol/L. Therefore, baseline sample concentrations were more than 10-fold superior than sensibility threshold.

For each group, the effects of *UCMS* and testing were analyzed as % variations from baseline concentrations. This analysis allows to correct for imbalance between groups at baseline level. Percent variations from baseline concentrations are widely used and provide an immediate view of the main effects of treatments over time.

## **2.5 Immunohistochemistry.**

Immunohistochemical detection of the effects of *UCMS* and testing on pCREB immunoreactivity was performed as previously reported (Dominguez et al., 2016). Briefly, anesthetized mice were transcardially perfused with a fixative solution containing 4% paraformaldehyde in ice-cold phosphate buffer (PB; 0.1M; pH 7.4). Brains were removed, post fixed overnight and sectioned (50  $\mu$ m) on a Vibratome (Leica) and sections were stored at - 20°C in a solution containing 30% ethylene glycol, 30% glycerol, 0.1 M PB until processed for immunohistochemistry. After incubation in blocking solution containing 8% goat serum and 0.05% Tween 20 (Sigma-Aldrich) in Tris buffer (TB; 0.1M) for 1h at room temperature (RT), free floating sections were incubated with rabbit primary polyclonal antibodies anti-phospho(ser133)-CREB (1:6000 in the blocking solution; Cell Signaling Technology, Beverly; USA) for 48h at 4°C. Sections were then rinsed in Tris buffer saline (TBS) and incubated for 2h in blocking solution containing a biotinylated goat anti-rabbit IgG secondary antibody (1:2000, Jackson Immunoresearch) followed by an incubation with avidin-biotinylated horseradish peroxidase complex (Vectastain Elite kit, Vector Laboratories) for 2h at RT. Sections were washed in TBS followed by TB, and the peroxidase reaction was visualized by using diaminobenzidinetetrahydrochloride and H<sub>2</sub>O<sub>2</sub> (Sigma-Aldrich). Sections were mounted on gelatine-coated slides, dehydrated and cover slipped.

Images of the CREB-positive cells in the PL subregion of the PFC and the dHPC and the ventral HPC (vHPC) sections were acquired by using a 3CDD color video color Sony camera mounted on a BX-50 Olympus microscope. The quantification of positive nuclei was performed at 10 $\times$  magnification. The pCREB-positive nuclei in the areas of interest were measured using our homemade ImageJ/Fiji developed by G. Courtand (INCIA, Bordeaux, France). Briefly, for each animal, regions of interest were delineated by an observer blind to experimental groups and labeled neurons were automatically counted given that they were above a threshold determined from each side of 3-4sections. The data obtained in both sides of each section were pooled and expressed as mean number of pCREB immunopositive nuclei / mm<sup>2</sup> in the PL subregion of the PFC, the dCA1 and the vCA1 according to Paxinos and Franklin atlas (2001).

## **2.6 Pharmacological treatments.**

Corticosterone (2mg/kg; Sigma) and metyrapone (35mg/kg; Tocris) were dissolved in 5% DMSO. The doses of metyrapone and corticosterone were chosen according to previous studies (Dominguez et al., 2017).The mice randomly received a single i.p. injection of drug or vehicle and performed WM testing 30min later. Then, 30min after the beginning of behavioral testing, blood was quickly collected (within 1min) and all *TEST* mice were sacrificed for brain collection. For measurements of baseline levels, mice randomly received a single i.p. injection of drug or vehicle and were sacrificed 1h later. For the experiment 3 (**Fig. 4A**), the non-stressed mice

were randomly assigned to naïve (CORT or VEH: N= 3 for each) or *TEST* (CORT: N=7; VEH: N=8) groups. For the experiment 4 (**Fig. 5A**), the *UCMS* and non-stressed mice were also assigned to naïve (MET or VEH: N=4 for each) or *TEST* (non-stressed: VEH: N=8 and MET: N=8; *UCMS*: VEH: N=7 and MET: N=8) groups.

## **2.7 Statistical analysis.**

Statistical analyses were performed using the Statview 5.0 software®. Data were expressed as mean±SEM. Behavioral and immunohistochemical data were analyzed using one- or two-way ANOVAs with *UCMS* exposure, Drugs and brain regions as independent factors. Results of multiple trials and time points were compared using two-way repeated measures ANOVA. Comparisons of WM performance with chance level were calculated with one-sample Student's t-test (with hypothesized mean-chance level=50%). An analysis per block of three consecutive trials (Block A: trials 2+3+4; Block B: trials 5+6+7) were made in order to study proactive interference effects. Post-hoc Bonferroni/Dunnett's multiple comparisons analyses were performed when adequate. Significance was set at  $P \leq 0.05$ .

### 3. Results

#### 3.1 Effects of UCMS exposure on physical state and anxiety-like behavior.

Measurements of the physical states (coat state score and body weight) were assessed weekly on mice randomly taken from the UCMS (n= 29) and non-stressed (n= 21) groups. As shown in **Fig.1B**, the coat state scores of mice in each group did not differ between UCMS and non-stressed groups before the beginning of the UCMS procedure (week 0: both  $P>0.1$ ). A repeated measure ANOVA on data related to the coat state scores indicated a significant effect of UCMS ( $F_{(1,48)}=61.03$ ,  $P<0.0001$ ), a significant effect of time ( $F_{(5,240)}=17.5$ ;  $P<0.0001$ ) as well as a significant UCMS X time interaction ( $F_{(5,240)}=14.81$ ;  $P<0.0001$ ). Specifically, UCMS exposure produced a significant deterioration of the coat state score that began after three weeks of stress exposure (versus non-stressed:  $P<0.01$ ) and worsened until week 6 (versus non-stressed at weeks 4 to 6:  $P<0.0001$  for all comparisons). Similarly, UCMS induced a significant deterioration of the body weight during the 6 weeks of assessment as attested by a significant effect of time ( $F_{(5,240)}=15.38$ ;  $P<0.0001$ ; repeated ANOVA) and a significant time X UCMS interaction ( $F_{(5,240)}=22.93$ ;  $P<0.0001$ ; repeated ANOVA). As shown in **Fig. 1C**, only the non-stressed mice gained weight significantly (versus weeks 0-1; week 2: both  $P<0.01$ ; weeks 4-6:  $P<0.001$  for all comparisons).

After a 1-week resting period, the effects of UCMS on anxiety-like behavior in the elevated plus maze were examined on mice randomly taken out from each group (N= 13 each). As shown in **Fig. 1D**, the UCMS mice displayed significantly reduced time and distance spent exploring the open arm relative to non-stressed mice (0-10 min; time:  $F_{(1,24)}=4.63$ ;  $P=0.04$ ; distance:  $F_{(1,24)}=5.5$ ;  $P=0.02$ ; one-way ANOVA), indicating that UCMS exposure induced increased anxiety-like behavior. In contrast, total distance exploring the elevated plus maze was not statistically different across groups ( $F_{(1, 24)}=0.4$ ; NS; **Fig 1D right**), indicating little influence of UCMS on general locomotor activity in this paradigm.

The hole-board exploration in the UCMS and non-stressed mice was tested 48h after the elevated plus maze (**Fig. 1E**). Statistical analyses on the time spent inspecting the holes and number of holes visited during the two 0-5min and 5-10-min observation periods indicated that significant effects of UCMS exposure ( $F_{(1,24)}=13.36$ ;  $P<0.0013$  and  $F_{(1,24)}=8.43$ ;  $P<0.0078$ ; respectively), of observation periods ( $F_{(1,24)}=9.9$ ;  $P<0.0044$  and  $F_{(1,24)}=5.44$ ;  $P=0.028$ , respectively) as well as a significant interaction between UCMS X observation periods for time ( $F_{(1,24)}=4.21$ ;  $P=0.05$ ). Importantly, further analyses indicated that, whereas the two groups did not differ during the first 5-min period (time:  $P=0.37$ ; number of holes  $P=0.056$ ), non-stressed mice displayed significantly greater total time exploring the holes and greater number of total holes visited over the 5-10 min period observation

relative to the stressed mice (time:  $P < 0.001$ ; number of holes:  $P < 0.01$ ) and to non-stressed condition during 0-5min period (time:  $P < 0.001$ ; number of holes:  $P < 0.05$ ).

-----  
**Figure 1**  
 -----

**3.2 Effects of UCMS on WM performances, serum corticosterone level and levels of CREB phosphorylation in the PL subregion of the PFC and the dorsal CA1 (dCA1) of the dHPC.**

The remaining UCMS (N= 10) and non-stressed (N=8) mice were tested in a T-maze sequential alternation task to examine whether chronic stress exposure caused WM deficits during the test session with a 90-sec ITI (Fig. 2A). The ANOVA revealed a significant effect of UCMS ( $F_{(1,16)} = 11.31; P = 0.004$ ) and a significant UCMS x block effect ( $F_{(1,16)} = 8.0; P = 0.01$ ). Indeed, **Fig. 2B** shows that UCMS mice exhibited normal alternation rates on Block A (trials 2-4) but were impaired on Block B (trials 5-7) relative to non-stressed mice (Trials 5-7;  $p < 0.001$ ). One sample *t*-test comparisons to chance level (50%) indicated that only non-stressed mice were able to alternate significantly above chance (non-stressed:  $t(7) = 5.58; P < 0.001$ ; UCMS:  $t(9) = 0.61; P = 0.5$ ). In contrast, UCMS did not affect mean choice latencies all along trials 1-7 (non-stressed:  $21.1 \pm 2.5$  sec; UCMS:  $16.7 \pm 1.6$  sec;  $F_{(1,18)} = 2.2; P > 0.1$ ). Finally, both groups exhibited high alternation rates when tested on an ITI of 5-sec (**Fig. 2B**; trial 8), thus excluding altered locomotor activity impairments or altered motivation to alternate as causal factors of the deficits observed on Block B.

Plasma corticosterone levels were significantly increased after UCMS exposure ( $F_{(1,27)} = 17.18; P = 0.0003$ ), independently of the baseline or TEST conditions (**Fig. 2C**). Both TEST groups displayed significantly greater levels of plasma corticosterone relative to baseline controls (both  $p < 0.001$ ) and the level was significantly higher in UCMS relative to non-stressed mice ( $P < 0.01$ ), indicating an additive effect of stress exposure and testing. Then, we examined whether brain region-specific alterations in pCREB co-occur with WM deficits in stressed mice. The numbers of pCREB-positive neurons were measured in three regions (PL subregion of the PFC, dCA1 and vCA1 regions) in mice sacrificed 30min after the beginning of WM testing or immediately after removal from their home-cage (naïve values) (**Figs. D-E**). Two-way ANOVAs conducted in each region showed a significant TEST effect in the PL ( $F_{(1,27)} = 5.2; P = 0.03$ ) and in the dCA1 ( $F_{(1,27)} = 13.09; P = 0.0012$ ) as well as a significant TEST X UCMS interaction in both regions (PL:  $F_{(1,27)} = 12.31; P = 0.0016$ ; dCA1:  $F_{(1,27)} = 5.46$ ;

$P=0.027$ ). Under naïve condition, the *UCMS* mice displayed significantly greater number of pCREB-positive neurons in the PL subregion of the PFC and the dCA1 ( $P<0.05$  and  $P<0.01$ , respectively) relative to non-stressed mice. After WM testing, the non-stressed, but not the *UCMS*, mice displayed significantly greater number of pCREB-positive neurons in both structures compared to naïve values (both  $P<0.001$ ). In the vCA1, ANOVA revealed no significant *TEST X UCMS* interaction nor were there effects of *UCMS* or *TEST*.

-----  
**Figure 2**  
 -----

### 3.3 *UCMS* led to significant elevation of corticosterone level in response to WM testing specifically in the PFC.

The time-course evolution of corticosterone concentrations was examined 60-min before (basal level), during (0 to +30-min) and 90-min after WM testing in independent cohorts of mice which were implanted **mice were implanted with microdialysis probes to measure CORT levels in the PFC or dHPC** (non-stressed:  $N=9$ ; *UCMS* :  $N=7$ ) (**Fig.3A**). As expected, *UCMS* exposure significantly reduced alternation rates on Block B with an ITI of 90-sec ec (*UCMS* : Trials 5-7:  $53.6\pm 4.3\%$ ; non-stressed:  $75.0\pm 3.6\%$ ;  $P<0.001$ ). In contrast, all mice alternated similarly and significantly above chance level when tested on trial 8 with a 5-sec ITI (data not shown).

As shown in **Fig 3B-C**, there was no significant *UCMS* effect on baseline corticosterone concentrations (i.e. mean  $\pm$  SEM from 4 dialysates taken before behavioral testing) in the PFC (non-stressed:  $0.244\pm 0.03$  ng/ml and *UCMS*:  $0.205\pm 0.07$  ng/ml;  $P>0.5$ ) and in the dHPC (non-stressed:  $0.196\pm 0.02$  ng/ml and *UCMS*:  $0.156\pm 0.02$  ng/ml;  $P>0.5$ ). ANOVA's analyses performed on data from samples taken immediately to 120-min after the beginning of WM testing yielded a significant *UCMS* effect in the PFC ( $F_{(1,98)}=4.8$ ;  $p=0.04$ ) but not in the dHPC ( $F_{(1,98)}=3.7$ ;  $p=0.07$ ) along with a significant time effect in both structures (PFC:  $F_{(7,98)}=4.3$ ;  $p<0.001$ ; dHPC:  $F_{(7,98)}=5.35$ ;  $p<0.001$ ). In the PFC (**Fig. 3B**), WM testing elicited a significant increase of corticosterone in the *UCMS* mice compared to non-stressed mice (0-15min:  $p<0.05$ ; 30min:  $p<0.01$ ), which persisted in the post-testing samples. In contrast, in the dHPC (**Fig.3C**), an elevation in corticosterone concentration only emerged in the 30-60min (non-stressed) and the 30-90min (stressed) post-testing time-points compared to baseline values. **However, no significant *UCMS* effect was found in the dHPC ( $p>0.10$  in all analyses).**

-----

**Figure 3**

-----

**3.4 Pre-testing injection of corticosterone in non-stressed mice produced effects similar to UCMS.**

Based on the data presented above, the prolonged and sustained elevation of corticosterone concentration emerges as a key factor of *UCMS*-induced WM impairments. Thus, we then examined whether non-stressed mice receiving pre-testing injection of corticosterone (CORT) exhibited behavioral and molecular alterations similar to those observed in the *UCMS* animals (**Fig.4A**). As shown in **Fig. 4B**, the total alternation performances of the two groups were significantly different ( $P < 0.05$ ) and only non-stressed mice injected with vehicle (VEH) were able to alternate significantly above chance level (VEH:  $t(7)=5$ ;  $P < 0.001$ ; CORT:  $t(6)=0.79$ ;  $P=0.45$ ).

Concerning plasma corticosterone levels, ANOVA indicated significant effects of Drug ( $F_{(1,17)} = 369$ ;  $P < 0.0001$ ) and TEST ( $F_{(1,17)} = 24.9$ ;  $P < 0.0001$ ), without Drug X TEST effect ( $F_{(1,17)} = 1.89$ ;  $P > 0.1$ ). **Fig. 4C** shows that the CORT- and VEH-injected groups significantly differed before and after WM testing ( $P < 0.001$  for both conditions). In the *TEST* groups, the non-stressed mice injected with VEH, but not with CORT, had significantly greater plasma corticosterone levels relative to respective baseline controls (VEH:  $P < 0.0001$  and CORT:  $P=0.07$ ).

**Figure 4D** shows the effects of pre-testing CORT injection on pCREB in the PL subregion of the PFC, the dCA1 and the vCA1. In the Naive groups, no Drug effect was found, whatever the region examined (data not shown). In the *TEST* groups, two-way ANOVA yielded a significant effect of Drug ( $F_{(1,13)} = 8.62$ ;  $P=0.016$ ), a significant Drug X Region interaction ( $F_{(2,26)}=5.62$ ;  $P < 0.01$ ) but no effect of Region ( $F_{(2,26)}=2.74$ ;  $P=0.08$ ). Post-hoc analyses confirmed that non-stressed mice injected with CORT had significantly reduced pCREB levels in the PFC and the dCA1 but not in the vCA1 compared to the VEH-injected non-stressed mice (PFC:  $P=0.0027$ ; dCA1:  $P=0.02$ ; vCA1:  $P > 0.1$ ).

-----

**Figure 4**

-----

**3.5 Pre-testing injection of metyrapone prevented the UCMS-induced behavioral and molecular alterations**

We next investigated whether the corticosterone synthesis inhibitor metyrapone (MET) administered 30min before TEST could reverse all the effects of *UCMS* exposure (Fig.5A). In non-stressed animals, WM performances were above chance level whatever the treatment considered (VEH:  $t(7)=5.22$ ;  $P=0.0012$ ; MET:  $t(7)=5$ ;  $P=0.0016$ ; **Fig. 5B**). The *UCMS* mice injected with MET alternated successfully ( $t(7)=7$ ;  $P<0.001$ ) in contrast to VEH-injected *UCMS* animals ( $t(6)=1.0$ ; NS), indicating that MET prevented WM impairments in stressed mice. Concerning plasma corticosterone concentration, the ANOVA analysis evidenced a significant Drug effect in the TEST groups ( $F_{(1,27)}=68.38$ ;  $P<0.0001$ ) but no significant *UCMS* nor interaction effects (both  $F_{(1,24)}<1.0$ ; both  $P=NS$ ). **Fig. 5C** shows that pre-testing MET injection significantly reduced plasma corticosterone levels, independently of whether or not mice underwent *UCMS* exposure.

We next examined whether pre-testing injection of metyrapone can prevent the effect of *UCMS* on pCREB levels in the PL region of the PFC and the dCA1. Results were expressed as changes in percentage in pCREB levels relative to matched naïve mice remaining in their home-cage (**Fig.5D**). In the PFC, there was a significant effect of Drug ( $F_{(1,26)}=3.92$ , $P=0.058$ ) and a significant Drug X *UCMS* interaction ( $F_{(1,27)}=5.17$ ,  $P=0.031$ ). As expected, VEH-injected *UCMS* mice showed significantly reduced pCREB in the PFC compared to non-stressed animals, independent of VEH or MET condition ( $P=0.05$  for both) (**Fig.5D<sub>left</sub>**). In addition, prefrontal pCREB levels were significantly higher in the MET-injected *UCMS* mice compared to matched VEH-injected animals ( $P<0.01$ ) indicating that MET blocked the effects of stress on WM-related changes in pCREB in the PFC. In contrast, there were no main effects of *UCMS* or Drug, or interaction in the dCA1 (**Fig.5D<sub>middle</sub>**) and vCA1 (**Fig.5D<sub>right</sub>**).

-----  
**Figure 5**  
 -----

#### 4. Discussion

Our study shows that, when measured after one week resting period, the *UCMS* mice displayed WM deficits and enhanced plasma corticosterone response before and after WM testing. In addition, we found that *UCMS* mice displayed high basal pCREB level in the PFC and the dHPC and that WM testing did not elicit any further increase in pCREB. Microdialysis sampling of corticosterone concentration in the PFC revealed enhanced corticosterone response during WM testing selectively in the PFC in non-stressed mice which was potentiated and prolonged in *UCMS* mice. In contrast, a non-significant rise of corticosterone was observed in the dHPC after WM testing only, reaching a peak 30-60min (non-stressed) and 90-105 min (*UCMS*) post-testing time-

points. Administration of corticosterone before WM testing to non-stressed mice produced behavioral and molecular alterations similar to those observed in *UCMS* animals whereas pre-testing injection of corticosterone synthesis inhibitor metyrapone reversed the enduring effects of chronic stress exposure. These findings indicate that changes in corticosterone concentrations in the PFC are a key factor of cognitive and molecular alterations induced by *UCMS*.

Two measures enable us to assess the impact of the *UCMS* procedure on the physical state of the animals: the coat state and the evolution of body weight. Grooming is an important aspect of the rodent behavioral repertoire that is very sensitive to stress (Kalueff and Tuohimaa, 2004). Moreover, previous reports have shown such grooming reduction after a psychosocial stress (Kramer et al., 1999; Flugge et al., 2001). Thus, the reduction in coat quality as a function of the exposure to *UCMS* is used to quantify a depression-like state, as reported in several previous experiments in the same model of depression (Isingrini et al., 2010; Nollet et al., 2011; Surget et al., 2011). We have evaluated the grooming quality during the 6 weeks stress exposure and we found an abnormal appearance of the fur, which may be explained by a decrease of grooming behavior likely related to an increase in alertness at the expense of grooming activities (Ducottet et al., 2004; Ducottet and Belzung, 2004). We have also evidenced a significant decrease in weight gain in *UCMS* mice relative to control NS mice, although our procedure did not include any food and water deprivations, consistent with previous studies using animal models of depression (Griebel et al., 2002; Zhu et al., 2014). Moreover, consistent with previous findings of Zhu (2014), our results demonstrate that *UCMS*-exposed mice displayed enhanced anxiety as measured by the decrease in the number of entries and the distance spent in open arms in the EPM test, in spite of the fact that the general locomotor activity did not differ between non-stressed and *UCMS* mice. Interestingly, *UCMS* also reduced exploratory activity in the second 5-min block of the exploratory session in the hole-board whereas exploratory activity was similar to that of controls in the 1st 5-min block. One possible explanation of the between-groups difference on the 5-10min block could be that non-stressed mice would habituate more rapidly than *UCMS* mice to the apparatus, which would enhance exploratory behavior in the 2<sup>nd</sup> 5-min block. Thus, the decrease of exploratory activity in *UCMS* mice would result from the maintenance of fear reactivity over the 2<sup>nd</sup> 5-min block rather than to an alteration of exploratory tendency *per se*. These overall data confirm that the chronic stress exposure induced an increase of anxiety and a deterioration of the physical state revealing a depression-like behavior in *UCMS*-exposed mice.

In parallel, we observed that *UCMS* pre-exposure leads to WM disturbance in a sequential alternation test. The low alternation rates observed in the *UCMS* mice were not attributable to decreased motivation to alternate nor to

alteration of exploratory behavior during trial series, as performances were not compromised when the ITI was shortened from 90-sec to 5-s. Thus, the deficits observed in *UCMS* mice during WM testing resulted in an enhanced vulnerability to delay-dependent interference over a series. The findings that WM deficits were observed 7 days after the last day of *UCMS* exposure are consistent with evidence that prior exposure to chronic stress, or prolonged elevation of corticosterone, produces long-lasting behavioral deficits in mice and rats (Matthews and Robbins, 2003; Olausson et al., 2014). In line with other findings, clinical data indicated that chronic psychosocial stress selectively disrupts several executive PFC functions in human, including WM, selective attention and behavioral flexibility (Negron-Oyarzo et al., 2016).

Dysfunction of the HPA axis is one of the most common disturbances reported in depression. Indeed, clinical observations show that most depressive patients exhibit a hyperactivity of the HPA axis, inducing a high GCs secretion and a disruption of the negative feedback loop on further GCs secretion (Holsboer, 2000). Thus, we attempted to determine whether *UCMS*-induced cognitive alterations are accompanied by abnormalities of the HPA axis functioning. In our study, *UCMS* exposure elicited an increase in plasma corticosterone concentration when measured at both baseline and 30min after the beginning of WM testing, which is consistent with other previous findings (Herman et al., 1995; Johnson and Yamamoto., 2009). This is also consistent with evidence showing that systemic administration of GCs or local glucocorticoid infusion in the PFC caused PFC dysfunction and WM impairments (Arnsten, 2009; Barsegyan et al., 2010). Together, the findings suggest that exposure to chronic or repeated stressful events, via disruption of the negative feedback modulation of the HPA axis and abnormal excessive levels of circulating corticosterone concentration, can have detrimental effects on PFC structure and function. Using microdialysis samples from freely-moving mice, we examined whether *UCMS*-induced WM deficits co-occur with alterations in the region-specific temporal evolution of local corticosterone in the PFC and the dHPC. Our results indicated that non-stressed mice display a marked increase of corticosterone rise during WM testing specifically in the PFC and that *UCMS* potentiates the prefrontal corticosterone response to testing. The origin of corticosterone measured in the PFC and dHPC is unclear. Corticosterone may originate from adrenal production, but an extra-adrenal origin cannot be excluded. Such an extra-adrenal production of corticosterone could explain the difference in the exaggerated rise of corticosterone concentrations over the different time-points after behavioral testing in *UCMS* mice. However, there is still a matter of debate as to whether extra-adrenal corticosteroids are of any physiological significance. This will depend on factors such as local concentration proximity to target cells and, possibly, to tissue-specific control mechanisms (Davies and MacKenzie, 2003).

In contrast, non-stressed mice displayed a more progressive, non-significant, rise of corticosterone in the dHPC that took place after WM testing. In addition, although hippocampal corticosterone rise was greater and lasted longer in *UCMS* mice, we found no evidence of a significant *UCMS* effect on corticosterone response in the dHPC. Such brain regional difference in the pattern of local corticosterone response could reflect either a different involvement of the PFC and the dHPC in processing the WM task, with an earlier involvement of the PFC as regards dHPC, or a different temporal sensitivity of these regions in response to behavioral stress. In agreement with the latter hypothesis, Caudal et al (2014), showed that the subcellular trafficking of corticosteroid receptors display distinct temporal dynamics in different limbic regions after behavioral stress.

Studies in animals have indicated that under stressful conditions, high levels of catecholamines, noradrenaline and dopamine, compromise the functional PFC integrity and lead to WM impairment, at least in part via an activation of the cAMP/protein kinase A (PKA) signaling transduction cascade (Barsegyan et al., 2010; Jett and Morilak, 2013). Indeed, activation of cAMP/PKA cascade leads to phosphorylation of CREB at Ser133 and subsequent induction of its downstream target gene expression, including genes required for learning and memory processes (Kida and Serita, 2014). However, previous evidence indicates that activation of the cAMP/PKA/CREB cascade improves HPC-dependent memory processes but impairs PFC-dependent memory processes, and particularly WM (Barsegyan et al., 2010; Ramos et al., 2003). Moreover, abnormally active basal cAMP-PKA signaling cascade can occlude normal PKA-dependent processes leading to cognitive impairments (Barsegyan et al., 2010; Giralt et al., 2011; Ramos et al., 2003). In agreement, we found that *UCMS* mice displayed increased basal pCREB immunoreactivity in the PFC and the dHPC compared with non-stressed animals and that WM testing did not elicit further increases in pCREB in *UCMS* mice as it did in non-stressed ones. Supporting the view that abnormal activation of basal PKA-CREB cascade may be a key determinant of WM impairments in *UCMS* mice, our pharmacological data indicated that in *UCMS* mice, systemic administration of the corticosterone synthesis inhibitor metyrapone, prevents WM impairments and normalizes prefrontal pCREB activity in both basal and testing conditions. In contrast, markedly increased plasma corticosterone in non-stressed mice given a pre-testing injection of corticosterone elicited WM impairments along with significantly reduced pCREB in the PFC. Even though we did not measure directly the regional corticosterone concentrations in metyrapone-treated mice, these findings suggest that systemic administration of metyrapone in *UCMS* mice, by reducing the plasma corticosterone concentrations, could weaken or suppress the abnormal rise of corticosterone observed during testing in the PFC and thus, restore normal WM performance as well as prefrontal pCREB activity in *UCMS* mice. In support of this view, we have previously shown that a

systemic metyrapone injection prevents the contextual memory retrieval impairment induced by a pre-test acute stress *via* the blockade of the stress-induced rise of corticosterone specifically in the dHPC (Tronche et al., 2010; Chauveau et al., 2010).

In summary, we showed in *UCMS* and non-stressed mice that the improvement or impairment of WM performance are closely related to changes of pCREB activity mainly in the PFC according to regional corticosterone concentrations. All together, our data shows that the abnormal regional increase of corticosterone concentrations mainly in the PFC emerges as a key factor of WM and neural activity dysfunctions in *UCMS*-treated animals.

**Acknowledgements:** This work has benefited from the facilities and expertise of the imagery platform ([www.incia.u-bordeaux.fr](http://www.incia.u-bordeaux.fr)) which is supported by CNRS and Region Aquitaine. We also like to thank Frances Ash for language proofreading ([frances.ash@orange.fr](mailto:frances.ash@orange.fr)).

## REFERENCES

- Arnsten, A.F., (2009). Stress signalling pathways that impair prefrontal cortex structure and function. *Nat Rev Neurosci* 10: 410-422.
- Barsegyan, A., Mackenzie, S.M., Kurose, B.D., McGaugh, J.L., Roozendaal, B., (2010). Glucocorticoids in the prefrontal cortex enhance memory consolidation and impair working memory by a common neural mechanism. *Proc Natl AcadSci U S A* 107: 16655-16660.
- Belzung, C., Surget, A., (2008). Unpredictable chronic mild stress in mice. *Experimental Models in Neurobehavioral Research*, Nova Science, New York.
- Belzung, C., Bilette de Villemeur, E., (2010). The design of new antidepressants: can formal models help? A first attempt using a model of the hippocampal control over the HPA-axis based on a review from the literature. *Behavioural pharmacology* 21: 677-689.
- Beracochea, D.J., Jaffard, R. (1990). Effects of ibotenic lesions of mammillary bodies on spontaneous and rewarded spatial alternation in mice. *J Cogn Neurosci.* 2(2):133-140.
- Caudal, D., Jay, T.M., Godsil, B.P., (2014). Behavioral stress induces regionally-distinct shifts of brain mineralocorticoid and glucocorticoid receptor levels. *Frontiers in behavioral neuroscience* 8 : 19. doi: 10.3389/fnbeh.2014.00019. eCollection 2014.
- Cerqueira, J.J., Pego, J.M., Taipa, R., Bessa, J.M., Almeida, O.F., Sousa, N. (2005) Morphological correlates of corticosteroid-induced changes in prefrontal cortex-dependent behaviors. *J Neurosci.* 25:7792-7800
- Chauveau, F., Tronche, C., Pierard, C., Liscia, P., Drouet, I., Coutan, M., Beracochea, D., (2010). Rapid stress-induced corticosterone rise in the hippocampus reverses serial memory retrieval pattern. *Hippocampus* 20: 196-207.
- Coleman, G., Gigg, J., Canal, MM.(2016). Postnatal light alters hypothalamic-pituitary-adrenal axis function and induces a depressive-like phenotype in adult mice.*Eur J Neurosci.* 44(10):2807-2817.
- Davies E, MacKenzie SM (2003) . Extra-adrenal production of corticosteroids. *Clin Exp Pharmacol Physiol.* Jul;30(7):437-45.
- Dominguez, G., Faucher, P., Henkous, N., Krazem, A., Pierard, C., Beracochea, D., (2014). Stress induced a shift from dorsal hippocampus to prefrontal cortex dependent memory retrieval: role of regional corticosterone. *Frontiers in behavioral neuroscience* 8: 166.
- Dominguez, G., Dagnas, M., Decorte, L., Vandesquille, M., Belzung, C., Beracochea, D., Mons, N., (2016). Rescuing prefrontal cAMP-CREB pathway reverses working memory deficits during withdrawal from prolonged alcohol exposure. *Brain structure & function* 221: 865-877. doi: 10.3389/fnbeh.2014.00166.
- Dominguez, G., Belzung, C., Pierard, C., David, V., Henkous, N., Decorte, L., Mons, N., Beracochea, D., (2017). Alcohol withdrawal induces long-lasting spatial working memory impairments: relationship with changes in corticosterone response in the prefrontal cortex. *Addiction biology.* 2017 22(4):898-910
- Dorey, R., Pierard, C., Chauveau, F., David, V., Beracochea, D., (2012). Stress-induced memory retrieval impairments: different time-course involvement of corticosterone and glucocorticoid receptors in dorsal and ventral hippocampus. *Neuropsychopharmacology* : 37: 2870-2880.
- Drevets, W.C., (2000). Neuroimaging studies of mood disorders. *Biological psychiatry* 48, 813-829.
- Droste, S.K., de Groote, L., Atkinson, H.C., Lightman, S.L., Reul, J.M., Linthorst, A.C., (2008). Corticosterone levels in the brain show a distinct ultradian rhythm but a delayed response to forced swim stress. *Endocrinology* 149: 3244-3253.
- Ducottet, C., Aubert, A., Belzung, C., (2004). Susceptibility to subchronic unpredictable stress is related to individual reactivity to threat stimuli in mice. *Behavioural brain research* 155: 291-299.
- Ducottet, C., Belzung, C., (2004). Behaviour in the elevated plus-maze predicts coping after subchronic mild stress in mice. *Physiology & behavior* 81: 417-426.
- Flugge, G., Kramer, M., Fuchs, E., (2001). Chronic subordination stress in male tree shrews: replacement of testosterone affects behavior and central alpha(2)-adrenoceptors. *Physiology & behavior* 73, 293-300.
- Geng, H., Wu, F., Kong, L., Tang, Y., Zhou, Q., Chang, M., Zhou, Y., Jiang, X., Li, S., Wang, F., (2016). Disrupted Structural and Functional Connectivity in Prefrontal-Hippocampus Circuitry in First-Episode Medication-Naive Adolescent Depression. *PloS one* 11: e0148345.
- Giralt, A., Saavedra, A., Carretón, O., Xifró, X., Alberch, J., Pérez-Navarro, E. (2011). Increased PKA signaling disrupts recognition memory and spatial memory: role in Huntington's disease. *Hum Mol Genet.* 20(21):4232-4247
- Griebel, G., Simiand, J., Steinberg, R., Jung, M., Gully, D., Roger, P., Geslin, M., Scatton, B., Maffrand, J.P., Soubrie, P., (2002). 4-(2-Chloro-4-methoxy-5-methylphenyl)-N-[(1S)-2-cyclopropyl-1-(3-fluoro-4-methylphenyl)ethyl]-5-methyl-N-(2-propynyl)-1, 3-thiazol-2-amine hydrochloride (SSR125543A), a potent and selective corticotrophin-releasing factor(1) receptor antagonist. II. Characterization in rodent

- models of stress-related disorders. *The Journal of pharmacology and experimental therapeutics* 301: 333-345.
- Herman, J.P., Adams, D., Prewitt, C. (1995). Regulatory changes in neuroendocrine stress-integrative circuitry produced by a variable stress paradigm. *Neuroendocrinology*. 61(2):180-190.
- Heinzmann JM, Thoeringer CK, Knapman A, Palme R, Holsboer F, Uhr M, Landgraf R and Touma C (2010) intrahippocampal corticosterone response in mice selectively bred for extremes in stress reactivity: a microdialysis study. *Journal of neuroendocrinology* , 22: 1187-1197.
- Holsboer, F., (2000). The corticosteroid receptor hypothesis of depression. *Neuropsychopharmacology* 23: 477-501.
- Isingrini, E., Camus, V., Le Guisquet, A.M., Pingaud, M., Devers, S., Belzung, C., (2010). Association between repeated unpredictable chronic mild stress (UCMS) procedures with a high fat diet: a model of fluoxetine resistance in mice. *PLoS one* 5, e10404.
- Jett, J.D., Morilak, D.A. (2013). Too much of a good thing: blocking noradrenergic facilitation in medial prefrontal cortex prevents the detrimental effects of chronic stress on cognition. *Neuropsychopharmacology*. 38(4):585-595.
- Johnson, B.N., Yamamoto, B.K. (2009). Chronic unpredictable stress augments +3,4-methylenedioxymethamphetamine-induced monoamine depletions: the role of corticosterone. *Neuroscience*. 159(4):1233-1243.
- Kalueff, A.V., Tuohimaa, P., (2004). Grooming analysis algorithm for neurobehavioural stress research. *Brain Res Brain Res Protoc* 13: 151-158.
- Kendler, K.S., Gardner, C.O., Neale, M.C., Prescott, C.A. (2001). Genetic risk factors for major depression in men and women: similar or different heritabilities and same or partly distinct genes? *Psychological Medicine* 31: 605-616.
- Kida S, Serita T. (2014). Functional roles of CREB as a positive regulator in the formation and enhancement of memory. *Brain Res Bull*. 2014 105:17-24.
- Kramer, M., Hiemke, C., Fuchs, E., (1999). Chronic psychosocial stress and antidepressant treatment in tree shrews: time-dependent behavioral and endocrine effects. *Neuroscience and Biobehavioral Reviews* 23: 937-947.
- Kuipers SD, Trentani A, Westenbroek C, Bramham CR, Korf J, Kema IP, Ter Horst GJ, Den Boer JA. (2006) Unique patterns of FOS, phospho-CREB and BrdU immunoreactivity in the female rat brain following chronic stress and citalopram treatment. *Neuropharmacology*. 50(4):428-440.
- Little, H.J., Croft, A.P., O'Callaghan, M.J., Brooks, S.P., Wang, G., Shaw, S.G., (2008). Selective increases in regional brain glucocorticoid: a novel effect of chronic alcohol. *Neuroscience* 156: 1017-1027.
- Luethi, M., Meier, B., Sandi, C. (2009). Stress effects on working memory, explicit memory, and implicit memory for neutral and emotional stimuli in healthy men. *Front Behav Neurosci*. 2:5. doi: 10.3389/neuro.08.005.2008. eCollection 2008
- Lupien, S.J., Gillin, C.J., Hauger, R.L. (1999). Working memory is more sensitive than declarative memory to the acute effects of corticosteroids: a dose-response study in humans. *Behav Neurosci*. 113(3):420-430.
- Matthews, K., Robbins, TW. (2003). Early experience as a determinant of adult behavioural responses to reward: the effects of repeated maternal separation in the rat. *Neurosci Biobehav Rev*. 27(1-2):45-55.
- McEwen, B.S. (2002). Sex, stress and the hippocampus: allostasis, allostatic load and the aging process. *Neurobiol Aging* 23(5):921-339
- Negrón-Oyarzo I, Aboitiz F, Fuentealba P. (2016). Impaired Functional Connectivity in the Prefrontal Cortex: A Mechanism for Chronic Stress-Induced Neuropsychiatric Disorders. *Neural Plast*. 2016:7539065. doi: 10.1155/2016/7539065. Epub 2016 Jan 19.
- Nestler, E.J., Barrot, M., DiLeone, R.J., Eisch, A.J., Gold, S.J., Monteggia, L.M., (2002). Neurobiology of depression. *Neuron* 34: 13-25.
- Nollet, M., Gaillard, P., Tanti, A., Girault, V., Belzung, C., Leman, S., (2012). Neurogenesis-independent antidepressant-like effects on behavior and stress axis response of a dual orexin receptor antagonist in a rodent model of depression. *Neuropsychopharmacology* : 37: 2210-2221.
- Olausson, P., Kiraly, D.D., Gourley, S.L., Taylor, J.R. (2013). Persistent effects of prior chronic exposure to corticosterone on reward-related learning and motivation in rodents. *Psychopharmacology (Berl)*. 225(3):569-577.
- Ottewiller, J.E., Meier, A.H., Russo, A.C., Frenze, M.E. (1979) Circadian rhythms of plasma corticosterone binding activity in the rat and the mouse. *Acta Endocrinol (Copenh)*. 91(1):150-157.
- Patil, C.G., Lad, S.P., Katznelson, L., Laws, E.R., Jr., (2007). Brain atrophy and cognitive deficits in Cushing's disease. *Neurosurg Focus* 2: E11.
- Paxinos, G., Franklin, K.B.J., (2001). *The Mouse Brain in Stereotaxic Coordinates*. Second ed. Academic Press.

- Raadsheer, F.C., Hoogendijk, W.J., Stam, F.C., Tilders, F.J., Swaab, D.F., (1994). Increased numbers of corticotropin-releasing hormone expressing neurons in the hypothalamic paraventricular nucleus of depressed patients. *Neuroendocrinology* 60: 436-444.
- Roozendaal, B., McReynolds, J.R., McGaugh, J.L. (2004). The basolateral amygdala interacts with the medial prefrontal cortex in regulating glucocorticoid effects on working memory impairment. *J Neurosci.* 24:1385-1392.
- Sandi, C., (2004). Stress, cognitive impairment and cell adhesion molecules. *Nat Rev Neurosci.* 5(12):917-930.
- Sarabdjitsingh, R.A., Meijer, O.C., Schaaf, M.J., de Kloet, E.R. (2009) Subregion-specific differences in translocation patterns of mineralocorticoid and glucocorticoid receptors in rat hippocampus. *Brain Res.* 1249:43-53.
- Starkman, M.N., Giordani, B., Berent, S., Schork, M.A., Schteingart, D.E., (2001). Elevated cortisol levels in Cushing's disease are associated with cognitive decrements. *Psychosom Med* 63: 985-993.
- Surget, A., Saxe, M., Leman, S., Ibarguen-Vargas, Y., Chalon, S., Griebel, G., Hen, R., Belzung, C., (2008). Drug-dependent requirement of hippocampal neurogenesis in a model of depression and of antidepressant reversal. *Biological psychiatry* 64: 293-301.
- Surget, A., Tanti, A., Leonardo, E.D., Laugeray, A., Rainer, Q., Touma, C., Palme, R., Griebel, G., Ibarguen-Vargas, Y., Hen, R., Belzung, C., (2011). Antidepressants recruit new neurons to improve stress response regulation. *Mol Psychiatry* 16: 1177-1188.
- Tanti, A., Belzung, C., (2013). Neurogenesis along the septo-temporal axis of the hippocampus: are depression and the action of antidepressants region-specific? *Neuroscience.* 12 : 234-252.
- Tardito D, Perez J, Tiraboschi E, Musazzi L, Racagni G, Popoli M. (2006). Signaling pathways regulating gene expression, neuroplasticity, and neurotrophic mechanisms in the action of antidepressants: a critical overview. *Pharmacol Rev.* 58(1):115-134.
- Touyarot, K., Venero, C., Sandi, C. (2004). Spatial learning impairment induced by chronic stress is related to individual differences in novelty reactivity: search for neurobiological correlates. *Psychoneuroendocrinology.* 29(2):290-305.
- Tronche, C., Pierard, C., Coutan, M., Chauveau, F., Liscia, P., Beracochea, D., (2010). Increased stress-induced intra-hippocampus corticosterone rise associated with memory impairments in middle-aged mice. *Neurobiol Learn Mem* 93 : 343-351.
- Vandesquille, M., Baudonnat, M., Decorte, L., Louis, C., Lestage, P., Beracochea, D., (2013). Working memory deficits and related disinhibition of the cAMP/PKA/CREB are alleviated by prefrontal alpha4beta2\*-nAChRs stimulation in aged mice. *Neurobiol Aging.* 2013, 34(6):1599-1609
- Willner, P. (2016). The chronic mild stress (CMS) model of depression: History, evaluation and usage. *Neurobiol Stress.* 6:78-93.
- Yuen, E.Y., Wei, J., Liu, W., Zhong, P., Li, X., Yan, Z. (2012). Repeated stress causes cognitive impairment by suppressing glutamate receptor expression and function in prefrontal cortex. *Neuron.* 73(5):962-977.
- Zhu, S., Shi, R., Wang, J., Wang, J.F., Li, X.M., (2014). Unpredictable chronic mild stress not chronic restraint stress induces depressive behaviours in mice. *Neuroreport* 25: 1151-1155.

**FIGURE LEGENDS**

**Figure 1: The effects of UCMS exposure on physical state and anxiety-like behaviors.** (A) Schematic representation of the experimental procedures. Mice were randomly assigned into two groups: UCMS (N=29) or non-stressed mice (NS, N=21). Measurements of the coat state scores and body weight were assessed weekly (arrows). After a 1-week resting period, anxiety-like behavior in the elevated plus maze (EPM) and exploration in the hole-board apparatus were conducted in a cohort of mice from the UCMS and NS groups (N=13 for each group). UCMS mice displayed significant deterioration of the coat state score (B) and body weight (C) after 3-4 weeks of stress condition, compared with NS mice. (D) In the EPM test, UCMS mice displayed decreased percentage of time ( $D_{left}$ ), and distance ( $D_{middle}$ ) in the extremities of open arms compared to NS mice. The total distance spent in the maze ( $D_{right}$ ) did not differ between the groups. (E) In the hole-board test, UCMS produced significant decreases of the total time (in sec) exploring the holes ( $E_{left}$ ) and number of total holes visited ( $E_{right}$ ) during the 5-10min period. Bars represent means  $\pm$  SEM. \* $P < 0.05$ , \*\* $P < 0.01$  and \*\*\* $P < 0.001$  relative to NS.  $^{\circ}P < 0.05$ ;  $^{\circ\circ}P < 0.01$  and  $^{\circ\circ\circ}P < 0.001$  relative to weeks 0-1.  $^{\$}P < 0.01$  and  $^{\$ \$}P < 0.001$  relative to 0-5min period.

**Figure 2: UCMS leads to WM deficits associated with increased plasma corticosterone response and decreased pCREB immunoreactivity.** (A) Experimental design: plasma corticosterone and number of pCREB-positive neurons were measured in the remaining UCMS and non-stressed (NS) mice sacrificed 30min after the beginning of WM testing (UCMS: N=10; NS: N=8) in the T-maze alternation task. (B); **Left** : Mean percentage of alternation rates were measured in Block A (Trials 2-4) and Block B (Trials 5-7) with a 90-sec inter-trial interval (ITI). **Right** : trial 8 had a shorter 5-sec ITI. (C) UCMS exposure significantly enhanced plasma corticosterone (ng/ml) under baseline condition (NAIVE) and after WM (TEST). (D) The numbers of positive pCREB nuclei/mm<sup>2</sup> were measured in the PFC, the dCA1 and the vCA1. In the NAIVE groups, the UCMS mice had significantly higher pCREB-positive neurons in the PFC and the dCA1 compared to NS mice. WM testing induced significantly higher pCREB-positive neurons in both structures of the NS, but not of the UCMS mice. No effect of TEST nor UCMS was found in the vCA1. (E) Representative photomicrographs showing pCREB immunoreactivity in the PFC of NS (top) and UCMS (bottom) mice from the NAIVE (left) and TEST (right) groups. Bars represent means  $\pm$  SEM. \* $P < 0.05$ , \*\* $P < 0.01$  and \*\*\* $P < 0.001$  relative to the NS.  $^{\circ\circ\circ}P < 0.001$  relative to the NAIVE.

**Figure 3: Effects of UCMS exposure on corticosterone response in the PFC and dHPC.** (A) Histological controls of intra-PFC (left) and intra-dCA1 (right) microdialysis probe implantation. Coronal brain sections were

stained with cresyl violet. **(B)** In the PFC, *UCMS* mice exhibited significantly greater corticosterone concentrations during WM testing (grey area, 0 and 15-min time-points) and at 30-min relative to the non-stressed (NS) mice. **(C)** In the dHPC, the time lag to produce *UCMS*-associated increase in corticosterone concentrations was longer. No significant *UCMS* effect was found in the dHPC. Results are expressed as percentage of mean baseline values. Bars represent means  $\pm$  SEM. \* $P < 0.05$  and \*\* $P < 0.01$  relative to *TEST-NS*. \* $P < 0.05$ , \*\* $P < 0.01$  and \*\*\* $P < 0.001$  relative to baseline.

**Figure 4. Effects of pre-testing corticosterone injection in non-stressed mice.** **(A)** Plasma corticosterone concentrations and pCREB immunoreactivity were measured in non-stressed (NS) mice randomly assigned into *NAIVE* (CORT: N=3; VEH: N=3) or *TEST* (CORT: N=7; VEH: N=8). **(B)** Pre-testing CORT injection significantly reduced alternation rates in the NS mice. Dashed line represents chance level. **(C)** CORT injection significantly increased the plasma corticosterone concentration (ng/ml) under both *NAIVE* and *TEST* conditions. **(D)** CORT blocked the testing-associated increase in pCREB in the PFC and the dCA1. However, the effect was significant in the PFC only. Results are expressed as number of positive pCREB nuclei/mm<sup>2</sup>. Bars represent means  $\pm$  SEM. ###  $P < 0.001$  relative to chance level (50%). ° $P < 0.05$ , °° $P < 0.001$  relative to vehicle. \*  $P < 0.05$  relative to *NAIVE*.

**Figure 5. Effects of metyrapone on WM performance, plasma corticosterone concentration and CREB phosphorylation in *UCMS* and NS mice.** **(A)** Experimental design: non-stressed (NS) and *UCMS* mice received metyrapone (MET) or vehicle (VEH) injection 30-min before sacrifice (*NAIVE*) or WM testing (*TEST*). Plasma corticosterone level and pCREB immunoreactivity were then measured 30-min after the beginning of WM testing and compared with respective naïve groups. **(B)** Metyrapone prevented the *UCMS*-induced WM deficits (as expressed as percentage of alternation rates). No drug effect was found in the NS group. Dashed line represents chance level. **(C)** Metyrapone blocked the effects of *UCMS* and testing on plasma corticosterone concentrations (ng/ml). Dashed lines represent corticosterone level in the four *NAIVE* groups. **(D)** Metyrapone prevented the effects of *UCMS* on changes in pCREB-positive neurons in the PFC and dCA1. Results are expressed as % variations of *NAIVE*. Bars represent means  $\pm$  SEM. \*\* $P < 0.01$  relative to NS. ° $P < 0.05$ , °° $P < 0.01$  and °°° $P < 0.001$  relative to VEH.

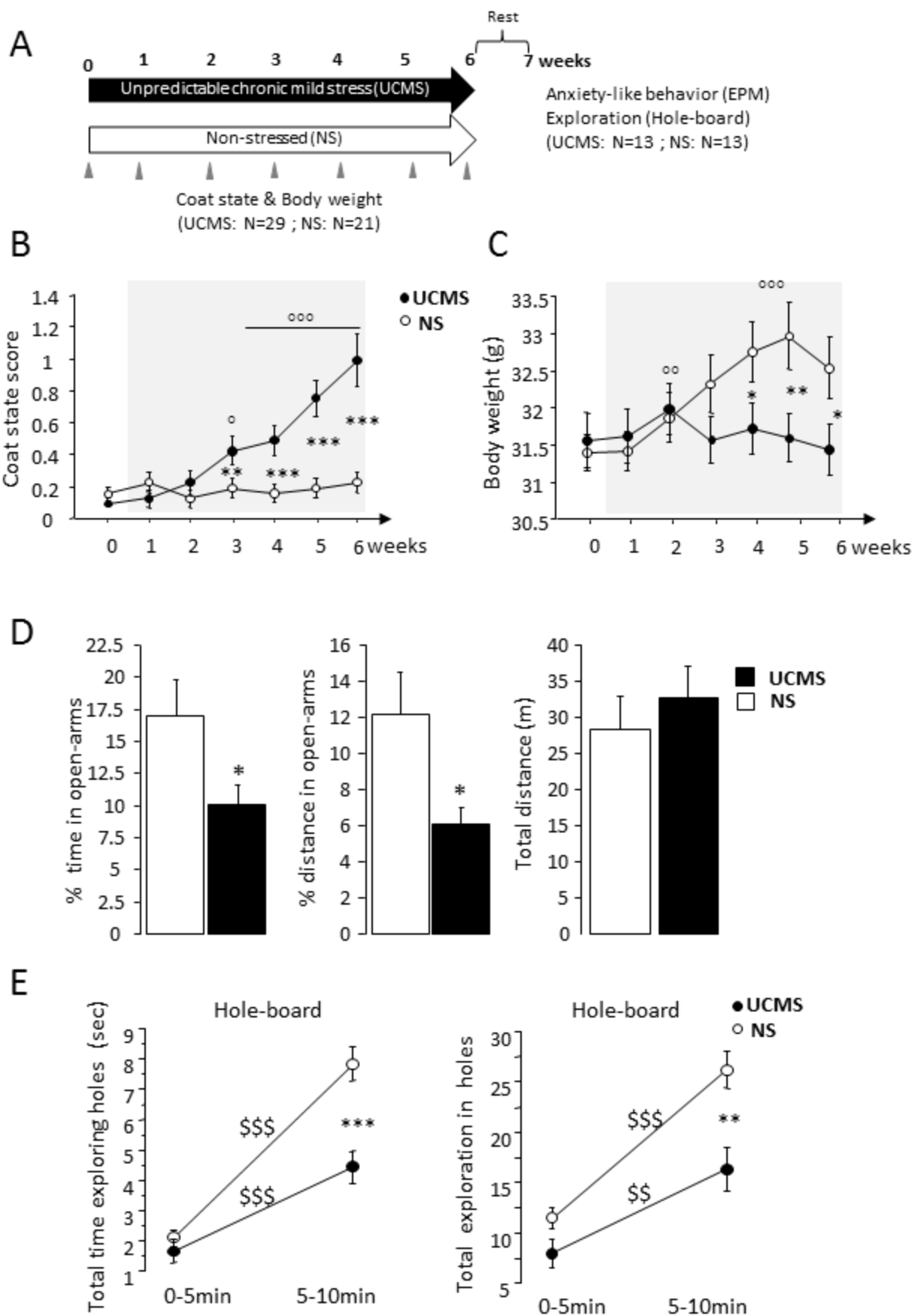
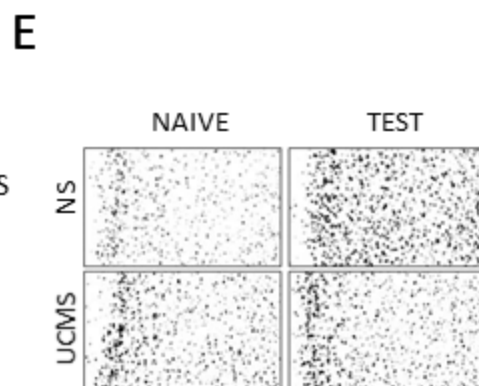
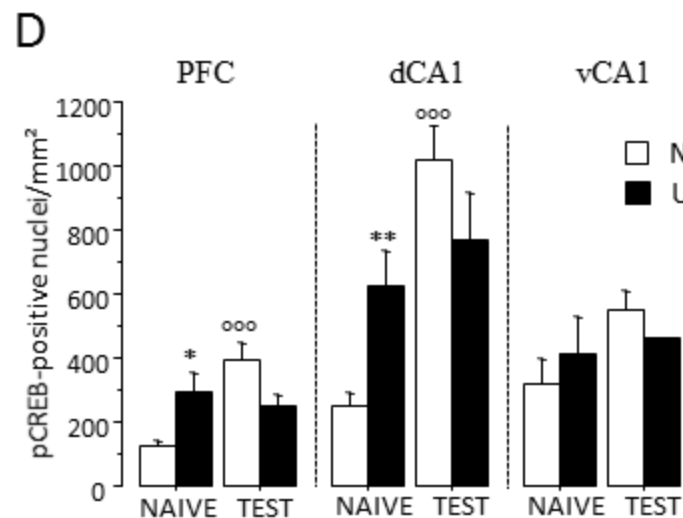
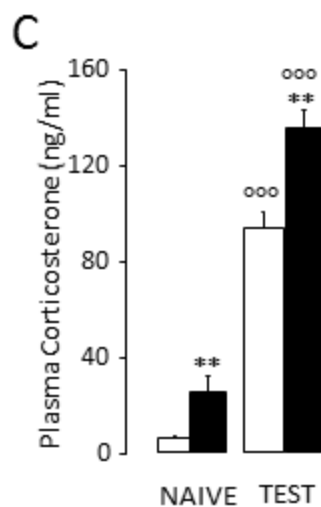
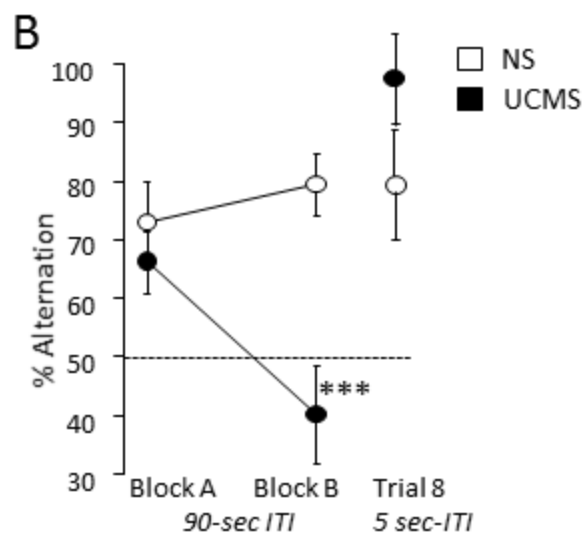
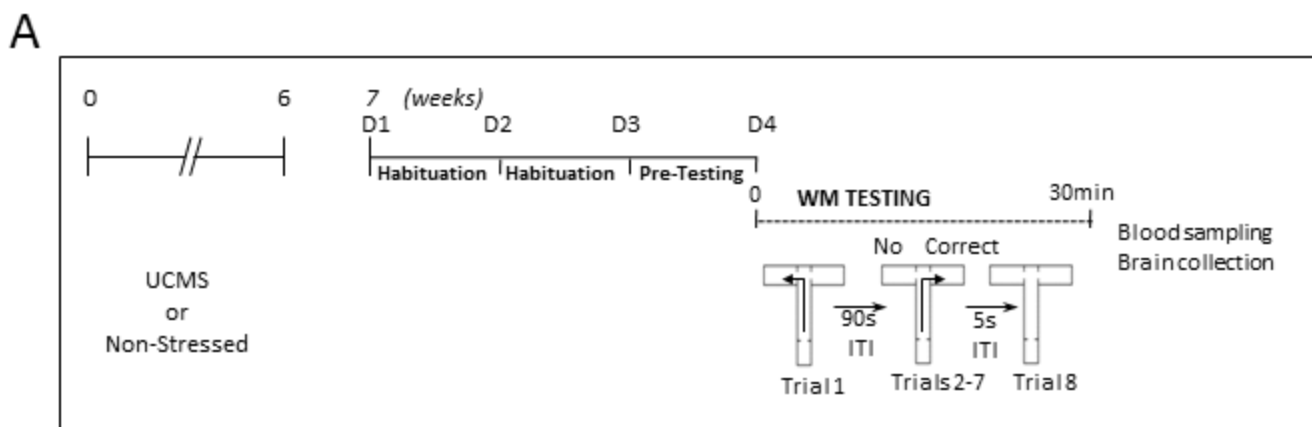
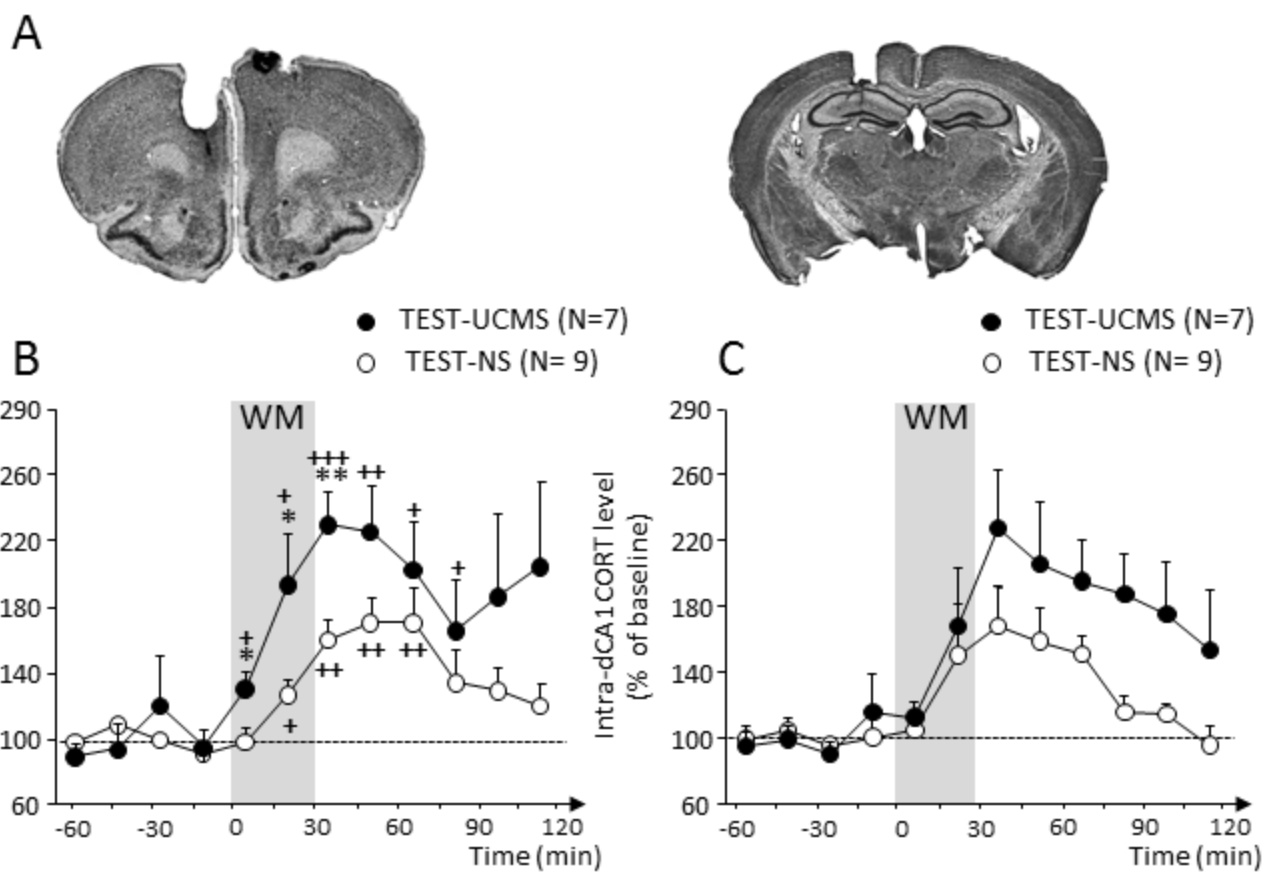


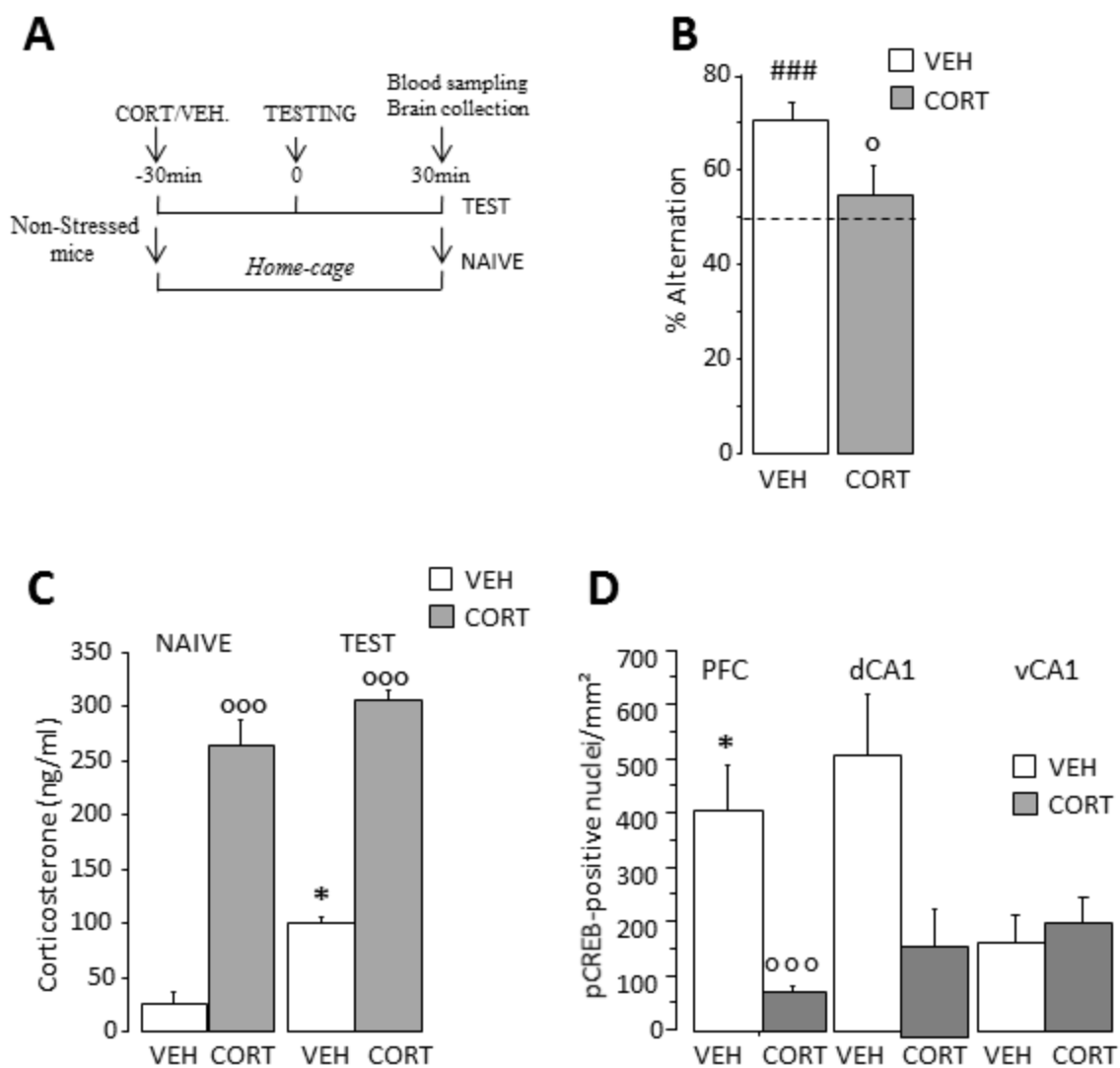
FIGURE 1



**FIGURE 2**



**FIGURE 3**



**FIGURE 4**

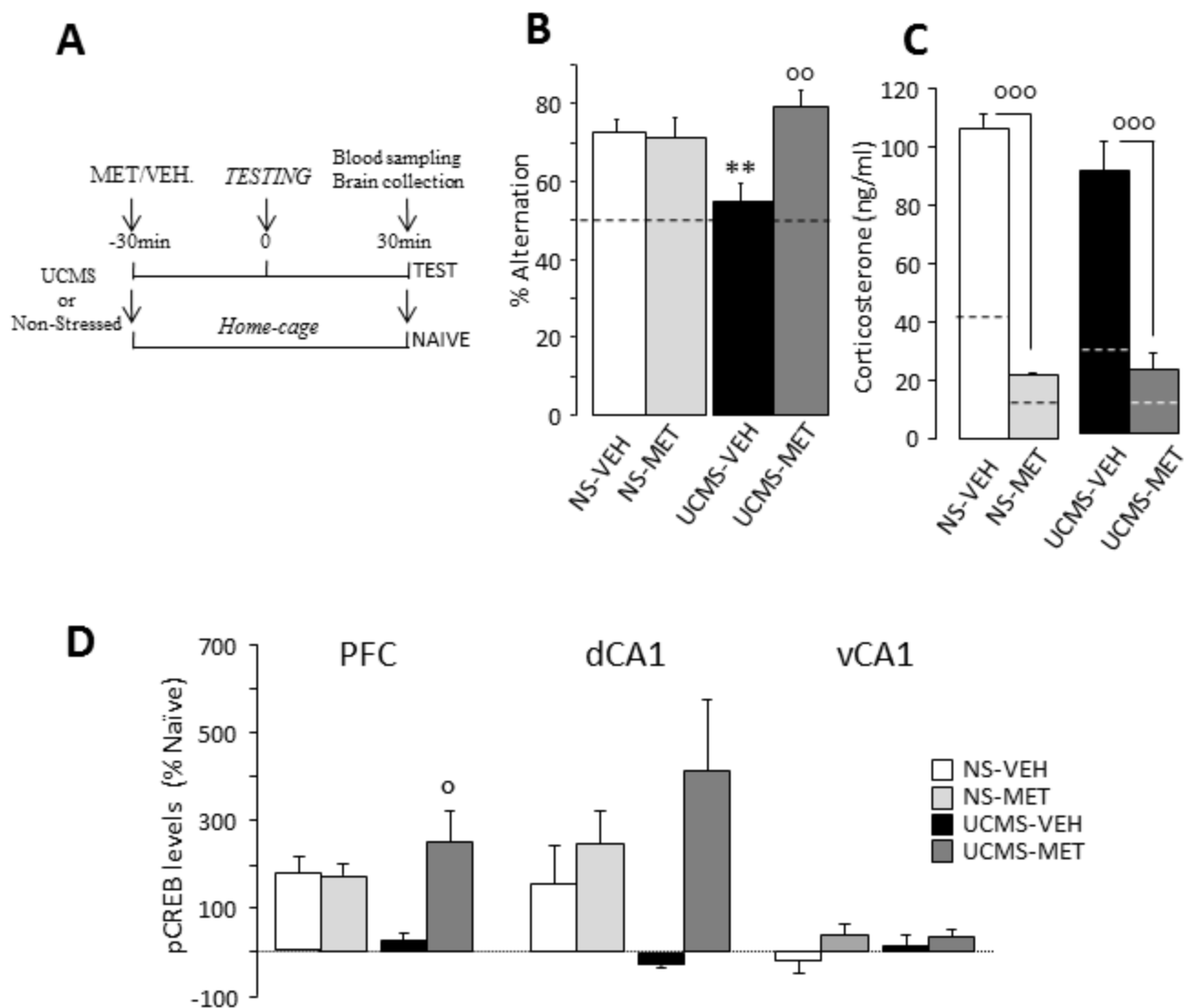


FIGURE 5

