



HAL
open science

Characterizing the Eemian-Weichselian transition in northwestern Europe with three multiproxy speleothem archives from two Belgian cave systems (Han-sur-Lesse and Remouchamps)

Stef Vansteenberge, Sophie Verheyden, Dominique Genty, Dominique Blamart, Steven Goderis, Stijn J M van Malderen, Frank Vanhaecke, Florent Hodel, David Gillikin, Camille Ek, et al.

► To cite this version:

Stef Vansteenberge, Sophie Verheyden, Dominique Genty, Dominique Blamart, Steven Goderis, et al.. Characterizing the Eemian-Weichselian transition in northwestern Europe with three multiproxy speleothem archives from two Belgian cave systems (Han-sur-Lesse and Remouchamps). *Quaternary Science Reviews*, 2019, 208, pp.21-37. 10.1016/j.quascirev.2019.01.011 . hal-03089454

HAL Id: hal-03089454

<https://cnrs.hal.science/hal-03089454v1>

Submitted on 28 Dec 2020

HAL is a multi-disciplinary open access archive for the deposit and dissemination of scientific research documents, whether they are published or not. The documents may come from teaching and research institutions in France or abroad, or from public or private research centers.

L'archive ouverte pluridisciplinaire **HAL**, est destinée au dépôt et à la diffusion de documents scientifiques de niveau recherche, publiés ou non, émanant des établissements d'enseignement et de recherche français ou étrangers, des laboratoires publics ou privés.

**1Characterizing the Eemian-Weichselian transition in northwestern Europe with three multiproxy
2speleothem archives from two Belgian cave systems (Han-sur-Lesse and Remouchamps).**

3Stef Vansteenberge¹, Sophie Verheyden¹, Dominique Genty², Dominique Blamart², Steven Goderis¹, Stijn
4J. M. Van Malderen³, Frank Vanhaecke³, Florent Hodel², David Gillikin⁴, Camille Ek⁵, Yves Quinif⁶, Hai
5Cheng^{7,8}, R. Lawrence Edwards⁸ and Philippe Claeys¹

6Corresponding email: stef.vansteenberge@vub.be

7¹ Analytical, Environmental and Geochemistry, Vrije Universiteit Brussel, Pleinlaan 2, 1050 Brussels,
8Belgium.

9² Laboratoire des Sciences du Climat et de l'Environnement, 91400 Gif-sur-Yvette, France

10³ Atomic and Mass Spectrometry Group, Department of Analytical Chemistry, Universiteit Gent,
11Krijgslaan 281 S12, 9000 Gent, Belgium.

12⁴ Department of Geology, Union College, Schenectady, NY 12308, USA.

13⁵ Université de Liège, 4000 Liège, Belgium.

14⁶ Centre d'études et de Recherches Appliquées au Karst (CERAK), Faculté Polytechnique de Mons, 7000
15Mons, Belgium.

16⁷ Institute of Global Environmental Change, Xi'an Jiaotong University, Xi'an, China

17⁸ Department of Earth Sciences, University of Minnesota, Minneapolis, USA.

18**Journal:** Quaternary Science Reviews

19**Abstract:**

20 Interglacial to glacial transitions represent the most drastic turnovers in the Quaternary climate system.
21 Yet, millennial-scaled climate variability and stochastic internal variability that result in these transitions
22 remain still poorly understood. Here, three speleothem archives from two different cave systems in
23 Belgium (Han-sur-Lesse and Remouchamps) are investigated using a multiproxy approach in order to
24 characterize the last interglacial to glacial transition. The studied samples roughly span the period
25 between 125 ka and 100 ka, covering a large part of the Eemian and early Weichselian. The speleothems
26 show a high reproducibility for $\delta^{13}\text{C}$, which is interpreted as a proxy for past vegetation activity,
27 controlled by vegetation assembly above the cave. All three speleothems show a drastic increase in $\delta^{13}\text{C}$
28 between 118 to 117 ka, reflecting a rapid change of vegetation assembly from last interglacial temperate
29 tree species towards glacial more open grass vegetation. This event shows a strong affinity in terms of
30 timing and climatic expression with the Late Eemian Aridity Pulse (LEAP) at 118 ± 1 ka, identified in
31 pollen records from Western Germany. Aligning the chronologies of the two independently dated Han-

32sur-Lesse speleothem records enables a more precise absolute chronology and provides an age of $117.7 \pm$
330.5 ka to the start of this event in the Belgian speleothems. This event marks a distinct transition in the
34Belgian speleothem proxies between Eemian optimum conditions and increased variability during the
35glacial inception and the start of this event at 117.7 ± 0.5 ka is therefore proposed as the Eemian-
36Weichselian transition and consequently the start of the glacial inception in the studied speleothems.
37High-resolution analysis shows that the 117.7 ± 0.5 ka event is initiated by a cooling pulse followed by a
38decrease in precipitation. A similar short-lived cooling event is also registered in multiple North-Atlantic
39sediment archives. This study hypothesizes that the origin of the cooling event at 117.7 ka is an internal
40climate response caused by the substantial amount of freshwater input from degraded ice-sheets by the
41end of the Eemian (~ 120 -118 ka). There is thus a clear climatic connection between the Belgian
42speleothems and other continental European archives and North Atlantic marine archives, providing the
43possibility of improving less constrained chronologies by alignment to the independently constructed
44speleothem age-depth model presented in this study.

45Introduction

46 The study of past interglacial periods, in particular those considered to be (at least partially) warmer
47than present, improves the understanding of the dynamics of the climate system within an anticipated
48anthropogenic global warming forecasted for this century (Masson-Delmotte et al., 2013). The last
49interglacial (LIG) experienced global average annual temperatures 1 to 2 °C higher than present (Otto-
50Bliesner et al., 2013) and a global mean sea-level about 6 to 9 m higher than present (Dutton et al., 2015).
51The LIG is so far the most intensively studied past interglacial. Using the definition of the Past
52Interglacials Working Group of PAGES (Berger et al., 2016), interglacial periods are characterized by the
53absence of Northern Hemisphere continental ice outside Greenland, resulting in a higher eustatic sea-level
54compared to glacial periods. Based on such eustatic sea-level reconstructions the LIG period occurred
55between 129 and 116 ka (Dutton and Lambeck, 2012; Govin et al., 2015). Subsequent to the LIG, the
56glacial inception occurred which is defined as the transition from an interglacial climate state towards
57colder, glacial climate conditions. However, it is not straightforward to assign absolute boundaries to this
58complex sequence of events. This paper agrees with the reasoning presented by Berger et al. (2016) that
59the end of the peak interglacial is considered as the initial stage of the subsequent glaciation, and thus the
60glacial inception, despite the saw tooth pattern of recent ice age cycles. Additionally, the view advocated
61by Govin et al. (2015) is followed, i.e. that the glacial inception lasts until the onset of Greenland Stadial
6225 (GS-25) at 110.640 ka (GICC05modelext age, Rasmussen et al., 2014).

63 The last interglacial has been identified in numerous types of paleoclimate archives, including ice
64cores of Greenland (NGRIP members, 2004; Neem Community, 2013) and Antarctica (Jouzel et al., 2007;
65Capron et al., 2014 and references therein), marine sediment cores (Shackleton, 1969; Shackleton et al.,
662003; Sanchez Goñi et al., 1999; Galaasen et al., 2014; Irvali et al., 2016), continental lake cores and/or
67peat bogs (Woillard, 1978; Tzedakis et al., 2003; Sirocko et al., 2005; Brauer et al., 2007; Helmens, 2014)
68and in speleothems (Drysdale et al., 2005; 2007; 2009; Meyer et al., 2008; Moseley et al., 2015;
69Vansteenberghe et al., 2016; Regattieri et al., 2016; Demény et al., 2017). As a consequence, definitions of
70the term ‘last interglacial’ can vary across studies (Kukla et al., 2002; Govin et al., 2015; Otvos et al.,
712015). The continental LIG acme, which is the equivalent of Marine Isotope Stage 5e (MIS 5e,
72Shackleton, 1969), is known as the Eemian. Although the Eemian was originally defined on a highstand
73sequence in the Netherlands containing warm water mollusks (Otvos, 2015 and references therein),
74nowadays it is mostly interpreted as an interval of warmer climate associated with the spread of temperate
75mixed forests in areas covered by similar vegetation today (Woillard, 1978; Sanchez Goñi et al., 1999;
76Kukla et al., 2002; Tzedakis et al., 2003). The Eemian is a diachronous unit, with longer durations in
77southern Europe (127 to 109 ka; Müller and Sanchez Goñi, 2007) compared to northern Europe (~126 to
78115 ka; Otvos, 2015). In the European continental terminology, the last glacial is defined as the
79Weichselian. Consequently, the last glacial inception in continental records starts at the Eemian-
80Weichselian transition (EWT) and lasts until the start of the continental equivalent of GS-25, which is the
81Mélissy I (Woillard, 1978). Despite the extensive availability of last interglacial datasets, issues remain
82unsolved, such as the underrepresentation of continental paleoclimate reconstructions (Tzedakis et al.,
832015). Also, mechanisms, including millennial-scaled climate variability and stochastic internal
84variability, that result in interglacial-glacial transitions (and vice-versa) remain still poorly understood
85(Berger et al., 2016). Govin et al. (2015) recognized the strength of speleothems’ independent U-Th
86chronology for alignment with other archives such as ice cores, pollen records and marine sediment cores.
87To resolve the above mentioned questions, a multiple speleothem dataset from northwestern Europe
88(Belgium) covering the Eemian and early Weichselian, thus including the last glacial inception, is
89presented in this study. The dataset almost continuously covers the period between ca. 126 and 100 ka.
90The use of multiple proxies, including growth rate, stable isotopes and trace elements, enables to translate
91the geochemical signals observed in the samples in terms of paleoclimate changes in northwestern
92Europe.

931. Background and earlier work

94 Speleothems have proven to be excellent recorders of regional, past continental climate change
95(Fairchild et al., 2012). Their strength lies in the ability to construct accurate and independent

96chronologies using U-Th radiometric dating combined with speleothem specific age-depth modeling
97algorithms (e.g. Scholz and Hoffmann, 2011; Breitenbach et al., 2012). Speleothem records from Europe
98covering the Eemian and early Weichselian have provided detailed paleoclimate reconstructions (Genty et
99al., 2013). However, the majority of these records are located in the Mediterranean realm or the Alps,
100leaving large parts of northern Europe undocumented from a speleothem approach. An earlier study by
101Vansteenberghe et al. (2016) has confirmed the potential of a Belgian speleothem and its variations in
102carbon and oxygen stable isotope ratio proxies ($\delta^{13}\text{C}$ and $\delta^{18}\text{O}$) to reconstruct climate changes over the
103Eemian to early Weichselian, expanding towards the northwest the spatial coverage of LIG European
104speleothem records. This study relied on the speleothem named 'Han-9' (Fig. 2), which started growing at
105 125.3 ± 0.6 ka and consists of three growth phases. The first hiatus occurs between 117.3 ± 0.5 ka and
106 112.9 ± 0.4 ka and a second hiatus starts at 106.6 ± 0.3 ka. Unfortunately, there is poor age control on the
107third and last growth phase, roughly lasting from ~ 103 to ~ 97 ka. $\delta^{13}\text{C}$ and $\delta^{18}\text{O}$ of the deposited
108speleothem CaCO_3 are presumed to be in equilibrium with the cave drip water. The amount of biogenic
109 CO_2 within the soil above the cave, which depends on the type of vegetation above the cave, was
110interpreted to control changes in speleothem $\delta^{13}\text{C}$. More depleted speleothem $\delta^{13}\text{C}$ reflects more active
111soils, resulting from a vegetation cover dominated by temperate trees while more enriched speleothem
112 $\delta^{13}\text{C}$ reflects lower activity due to an increased presence of grass and shrub vegetation types. Speleothem
113 $\delta^{18}\text{O}$ variations are controlled by a mix of local (e.g. temperature, precipitation) processes and more
114regional effects (e.g. ocean source $\delta^{18}\text{O}$). Stable isotope time-series revealed that Eemian optimum climate
115conditions were present from (at least) 125.3 ± 0.6 ka. Yet, between 117.5 ± 0.5 ka and 117.3 ± 0.5 ka, a
116severe increase in $\delta^{13}\text{C}$ (approximately 4 ‰) evidences a rapid change in vegetation assembly above the
117cave. This change in vegetation occurs simultaneously as the Late Eemian Aridity Pulse (LEAP), a short-
118lasting (~ 0.4 ka) dry event at 118 ± 1 ka described by Sirocko et al. (2005) in the ELSA vegetation record,
119constructed with pollen records from Eifel maar sediments (Germany). Therefore, the observed changes
120in Han-9 $\delta^{13}\text{C}$ are interpreted to represent the same climate event as the LEAP in the ELSA vegetation
121record. A similar climatic excursion was described from high-resolution marine records from the North
122Atlantic: 1) a decrease in North Atlantic Deep Water (NADW) formation at 116.8 ka (Galaassen et al.,
1232014) and 2) a drop in sea surface temperature with a simultaneous increase in ice rafted debris,
124suggesting Greenland ice-sheet growth, dated at 117 ka (Irvali et al., 2014; 2016). The presence of these
125events in the North Atlantic realm suggests a more global signature of this event than previously assumed.
126In this perspective, Han-9 provided the first independent chronology for the event, i.e. 117.5 ± 0.5 ka,
127occurring right at the time were the glacial inception is expected in northwestern Europe. Han-9 stopped
128growing during or shortly after the event making it impossible to place this event within the context of the
129last glacial inception.

130 This study expands the last interglacial to early glacial Belgian speleothem dataset (Han-9) with
131two additional speleothem records, one from the same cave and another from a second cave ~20 km
132away. This additional dataset allows to test whether the observed changes in the Han-9 proxies are
133reproducible in other speleothems on a regional scale and thus induced by regional paleoclimate changes.
134Additionally, implementing a sample of a completely other deposition dynamics (massive speleothem vs
135candle-shaped speleothem) from a second Belgian cave system (Remouchamps Cave) allows exclusion of
136any cave specific effects altering the regional paleoclimate signal. These two new speleothem samples are
137investigated through a multiproxy approach, using not only traditional stable isotope ratio time-series
138($\delta^{13}\text{C}$ and $\delta^{18}\text{O}$) but also trace element time-series of magnesium (Mg), strontium (Sr), barium (Ba), zinc
139(Zn), uranium (U), phosphorous (P), iron (Fe) and lead (Pb). By doing so, this study aims firstly to
140improve the chronology regarding the timing and duration of the 117.5 ± 0.5 ka event and secondly to
141better understand the relation of this climate event to the Eemian-Weichselian transition (EWT) and the
142last glacial inception.

1432. Study sites and speleothem samples

144 This study combines the results of three speleothem samples from two different cave systems (Han-
145sur-Lesse Cave system, $n = 2$, and Remouchamps Cave, $n = 1$) in Belgium. Both caves are located within
146the *Calestienne*, a SW-NE trending superficial limestone belt of Middle Devonian age (Fig. 1C). After
147deposition, these Paleozoic sediments underwent Hercynian folding followed by erosion in the Mesozoic.
148The current hydrographic network was established from the Neogene to Pleistocene, by erosion into these
149folded belts (Quinif, 2006). The caves are located ca. 200 km inland at an elevation of 200 m above sea
150level for Han-sur-Lesse Cave system and 150-200 m above sea level for Remouchamps Cave,
151respectively. Following the Köppen-Geiger classification (Peel et al., 2007), the climate in southern
152Belgium is maritime with cool summers and mild winters. For the period 1999-2013, average year-
153temperature was 10.2 °C and average yearly rainfall amount 820 mm yr^{-1} . This rainfall is spread over the
154entire year with no distinct seasonal distribution (Royal Meteorological Institute, RMI).

1552.1 Han-sur-Lesse Cave system

156 To complement the work of Vansteenberge et al. (2016), one additional stalagmite sample was
157retrieved from Han-sur-Lesse Cave: Han-8. The Han-sur-Lesse Cave system (Fig. 1B) is the largest
158known subterranean karst network in Belgium, with a total length of ~10 km. The cave system was
159formed by a meander cutoff of the Lesse River within the *Massif de Boine*, which is part of an anticline
160structure consisting out of Middle to Late Givetian reefal limestones. The thickness of the epikarst zone
161above the cave system is estimated to be around 40-70 m (Quinif, 2006). The area above the cave consists

162out of C3 type vegetation with mainly temperate *Corylus*, *Fagus* and *Quercus* trees. As a natural reserve it
163has been protected from direct human influence for over 50 years (Timperman, 1989). The Lesse River
164enters the cave system at the *Gouffre de Belvaux* and exits at the *Trou de Han* approximately 24 hours
165later (Bonniver, 2010). Similar to Han-9, Han-8 was retrieved from the Southern Network, which is the
166most distal part of the cave system (Fig. 1B). Both stalagmites are candle shaped, with a length of 178
167and 675 mm, respectively (Fig. 2). The Han-sur-Lesse Cave system is partly exploited as a show cave, but
168the Southern Network is not accessible for tourists. The Han-sur-Lesse Cave system consists of the Han-
169sur Lesse Cave and the Père Noël Cave and both have been intensively studied in the last three decades,
170making it the best understood cave system in Belgium. This includes speleothem dating and pollen
171analysis (Quinif and Bastin, 1994; Quinif, 2006), detailed hydrographic studies (Bonniver et al., 2010)
172and extended cave monitoring surveys (Genty and Deflandre, 1998; Verheyden et al., 2008; Van
173Rampelbergh et al., 2014), leading to successful paleoclimate reconstructions on Holocene speleothems
174down to seasonal scale (Verheyden et al., 2000; 2006; 2012; 2014; Van Rampelbergh et al., 2015, Allan et
175al. 2015).

1763.2 Remouchamps Cave

177 An additional stalagmite core sample, RSM-17 (Fig. 2), was retrieved from Remouchamps Cave in
1782012. This cave is located ~100 km southeast of Brussels, on the eastern bank of the Amblève River (Fig.
1791D). The elongated cave is formed along inverse faults within biostrome limestone deposits of Middle
180Frasnian age (Ek, 1970; Coen, 1970). The cave consists of an upper (Fig. 1D in black) and a lower level
181(Fig. 1D in grey) and has a total length of ~3.9 km. The subterranean river Rubicon flows through the
182lower level of the cave. The area above the cave consists of similar C3 type deciduous forest vegetation as
183Han-sur-Lesse Cave. RSM-17 stalagmite is an approximately 3 m large, fallen and broken stalagmite
184located within the *Salle des Ruines*. RSM-17 was among the first speleothems in Belgium to be dated
185using U-Th (Gewelt, 1985). In this study, RSM-17 is represented by 2 cores that were taken from the
186speleothem (Fig. 2). Core 1 was drilled from the base of the speleothem towards the top and is 1303 mm
187long. However, the upper part of core 1 (starting at 371 mm dft) missed the speleothem's central growth
188axis therefore a second core was taken from the top of the speleothem towards the bottom. The 2 cores
189were aligned based on the presence of a distinct, dense and brown layer, as shown by the black line in Fig.
1902.

1913. Methods

1924.1 U-Th dating and age-depth modeling

193 To construct robust age-depth models, 35 samples are taken along the three speleothems' growth axis
194 for radiometric dating (see Fig. 2 for locations). This includes 13 samples of Han-8 and 17 samples of
195 RSM-17. Five additional samples (marked in green on Fig. 2) are taken from Han-9 to improve the
196 existing age-depth model, which was originally constructed with 23 dates (Vansteenberghe et al., 2016).
197 All ages are acquired by U-Th dating at the University of Minnesota Earth Sciences Department
198 (Minneapolis, USA). For all U-Th analyses, 150-300 mg of speleothem calcite is milled and analyzed
199 with a Neptune multiple-collector plasma source mass spectrometer (MC-ICP-MS, Thermo-Fisher
200 Scientific, Bremen, Germany). Ages are corrected assuming an initial $^{230}\text{Th}/^{232}\text{Th}$ atomic ratio of 4.4 ± 2.2
201 $\times 10^{-6}$. The age datum is 1950 CE. For additional information about the applied method, see Edwards et
202 al. (1987), Shen et al. (2012) and Cheng et al. (2013) and references therein. Age-depth modeling is done
203 using the StalAge algorithm (Scholz and Hoffmann, 2011; Scholz et al., 2012) in R (R Core Team, 2013).
204 Depths are expressed as distance from top (dft) in mm. The outcome of the StalAge algorithm is a final
205 age-depth model that is the median of the simulated fits with a 2σ error, which is calculated through the
206 distribution of the simulated fits (Scholz and Hoffmann, 2011). One of the key advantages of the StalAge
207 algorithm is that it does not have any adjustable parameters, enabling a high-degree of reproducibility.
208 The only choice a user can make is whether outlier dates should be disregarded in the modeling process
209 or if their corresponding errors should be increased in order to fit the model. A disadvantage, however, is
210 that the model does not handle substantial changes in growth rate in the boundary areas of the
211 speleothem, i.e. top and base, very well (Scholz and Hoffmann, 2011). The resulting age-depth model is
212 then used to calculate corresponding growth rates, expressed in mm ka^{-1} . Additionally, the chronology is
213 further improved by aligning the independent Han-8 and Han-9 age-depth models to each other by
214 selecting specific corresponding tie points in both speleothems' $\delta^{13}\text{C}$ time-series.

215 4.2 Stable isotope ratio ($\delta^{13}\text{C}$ and $\delta^{18}\text{O}$) analysis

216 Speleothem subsamples for stable isotope ratio ($\delta^{13}\text{C}$ and $\delta^{18}\text{O}$) analysis are drilled along the
217 speleothems' growth axis (Fig. 2) using a MicroMill (Merchantek, Electro Scientific Industries Inc.,
218 Portland, USA), which is a computer steered drill mounted on a Leica GZ6 microscope (Leica
219 Microsystems GmbH, Wetzlar, Germany). The MicroMill system is equipped with tungsten carbide dental
220 drill bits 300 or 1000 μm in diameter (Komet Dental, Lemgo, Germany). Samples were stored at 50°C
221 prior to analysis to avoid contamination. Sample locations are indicated in Fig. 2 and spatial resolution
222 varies as a function of the speleothems growth rate between 5 mm (RSM-17) and 250 μm (Han-8). For
223 RSM-17 ($n=266$) and the high-resolution part of Han-8 (65-89.5 mm dft, $n=63$, Fig. 2), $\delta^{13}\text{C}$ and $\delta^{18}\text{O}$
224 measurements are done at the Stable Isotope Laboratory, Vrije Universiteit Brussel (Brussels, Belgium)
225 using a Perspective isotopic ratio mass spectrometer (IRMS) coupled to a Nucarb automated carbonate

226preparation system (Nu Instruments, Wrexham, UK). The Nu Instruments setup makes use of an in-house
227standard MAR-2(2), made from Marbella limestone and which is calibrated against the international
228standard NBS-19 (Friedman et al., 1982). Reported values for the MAR-2(2) standard are 3.41 ‰ Vienna
229Pee Dee Belemnite (VPDB) for $\delta^{13}\text{C}$ and 0.13 ‰ VPDB for $\delta^{18}\text{O}$. Averages of the total 2σ uncertainties
230for $\delta^{13}\text{C}$ and $\delta^{18}\text{O}$ are 0.03 ‰ and 0.08 ‰ for the Nu Perspective setup. Other Han-8 stable isotope ratios
231($n = 162$) are measured on a VG Optima dual-inlet IRMS (Thermo-Fisher Scientific, Bremen, Germany)
232at the Laboratoire des Sciences du Climat et de l'Environnement (Gif sur Yvette, France). NBS-19 was
233used as a reference material (Friedman et al., 1982). Analytical errors are 0.05 ‰ and 0.08 ‰ for $\delta^{13}\text{C}$ and
234 $\delta^{18}\text{O}$, respectively. At regular intervals, a replicate sample was measured in a different batch to check for
235the reproducibility of the analytical method.

2363.1 Trace elements

237 Two methods for speleothem trace element analysis are applied in this study. The Han-8 trace
238element record (Fig. 2), consisting of Mg, Al, P, Zn, Sr, Ba, Pb, and U, is constructed using laser ablation
239inductively coupled plasma mass spectrometry (LA-ICP-MS) at the Royal Africa Museum (Tervuren,
240Belgium). A Fisons-VG frequency quadrupled Nd-213 YAG laser ($\lambda = 266 \text{ nm}$) coupled to a Fisons-VG
241214 PlasmaQuad II+ mass spectrometer is used. Data are calibrated using both the NIST 610 (Pearce et
242al., 1997) and the USGS MACS1. Calibration (including blank subtraction and drift correction) is
243performed offline by using Ca as internal reference. Details of LA-ICP-MS operating conditions can be
244found in Lazareth et al. (2003). A total of 3702 data points are collected on Han-8 speleothem with an
245average spatial resolution of $\sim 40 \mu\text{m}$. Errors are calculated using the relative standard deviation (RSD) of
246NIST 610.

247 Trace elements for RSM-17 were only collected on a specific 76.56 mm long transect that covers the
248Eemian-Weichselian transition, i.e. between 596 and 518 mm dft (Fig. 2). RSM-17 trace element
249concentrations are determined using inductively coupled plasma mass spectrometry complemented by a
250LA-ICP-MS at the Atomic and Mass Spectrometry Group, Ghent University (Ghent, Belgium). The LA-
251ICP-MS setup consists of a 193 nm ArF*excimer Analyte G2 laser ablation system (Teledyne Photon
252Machines, Bozeman, MT, USA) coupled to a single-collector sector field Element XR ICP-MS unit
253(Thermo Fisher Scientific, Bremen, Germany). The laser is used to sample adjacent positions along a line
254segment parallel to the stalagmite's growth axis. The positions are ablated one-by-one for 15 s with a laser
255spot size 110 μm in diameter. A total of 696 positions are sampled. Sampling via individual drilling points
256is preferred here over the conventional approach of continuous line scanning because the single positions

257can be sampled longer, resulting in an improved limit of detection for low concentration elements, for
258example Y.

2594. Results

260 The results of U-Th dating are presented in Table 1. Errors represent a 2σ uncertainty. The speleothem
261samples from both cave sites have a comparable ^{238}U content, with an average of 284 ng g^{-1} (SD = 105 ng
262 g^{-1}) for the Han-sur-Lesse samples and 250 ng g^{-1} (SD = 97 ng g^{-1}) for the Remouchamps samples. In
263general, detrital Th contamination is low, with average $^{230}\text{Th}/^{232}\text{Th}$ atomic ratios of 11732×10^{-6} and 4217
264 $\times 10^{-6}$ for Han-sur-Lesse speleothems and RSM-17, respectively. The resulting ages are plotted in Fig. 3,
265with previously published ages of Han-9 (Vansteenberghe et al., 2016) marked in red. The new date
266obtained at the end of the first Han-9 growth phase, date 1, is consistent with the previously obtained age
267model. For growth phase 2, date 2 is not in stratigraphic agreement with earlier obtained ages. In the third
268growth phase, date 4 and 5 appear to be more consistent with the earlier obtained older dates, i.e. the
269batch that was dated in 2013 (Vansteenberghe et al., 2016), instead of the younger ages (the batch that was
270dated in 2015, marked with an * in Table 1). For Han-8, all determined ages are stratigraphically
271consistent, i.e. no age inversions occur. Errors range between 0.5 ka ($\sim 0.4 \%$) and 0.368 ka ($\sim 0.3 \%$). In
272contrast to the stratigraphically consistent data of Han-8, the age-depth plot of RSM-17 shows increased
273scattering from date 3 to 10 (i.e. between 1100 and 670 mm dft , Fig. 3). Yet, the ^{238}U content and
274 $^{230}\text{Th}/^{232}\text{Th}$ atomic ratios are not significantly different from the other dates (Table 1).

275 Figure 5 shows the results of the stable isotope and trace element analysis of Han-8 and RSM-17
276together with previously obtained $\delta^{13}\text{C}$ and $\delta^{18}\text{O}$ of Han-9 (Vansteenberghe et al., 2016). $\delta^{13}\text{C}$ values of
277RSM-17 are the most negative of all three speleothem $\delta^{13}\text{C}$ records with an average of -10.92 ‰ and a
278standard deviation of 0.70 ‰ . Han-8 $\delta^{13}\text{C}$ varies between -3.45 and -7.58 ‰ with an average of -5.87 ‰
279and a standard deviation of 1.16 ‰ . Starting from the base of the speleothem ($\sim 122 \text{ ka}$) up until ~ 117.7
280 ka , $\delta^{13}\text{C}$ varies roughly between -6 and -7.5 ‰ , except for a positive excursion to -4.98 ‰ at 121.5 ka .
281The amplitude of $\delta^{13}\text{C}$ variations after 117.7 ka , which is about 4 ‰ , is much larger compared to the
282bottom part of the stalagmite. Compared to $\delta^{13}\text{C}$, the range of $\delta^{18}\text{O}$ fluctuations in RSM-17 and Han-8 is
283smaller. The $\delta^{18}\text{O}$ signal of RSM-17 has an average of -5.00 ‰ and a standard deviation 0.41 ‰ . Han-8
284 $\delta^{18}\text{O}$ values fluctuate between -4.92 and -6.72 ‰ , with an average and standard deviation of -5.81 ‰ and
285 0.35 ‰ , respectively. Han-8 Mg, Sr, Ba and U trace element concentrations show a similar trend as Han-8
286 $\delta^{18}\text{O}$, with little variation between 122 and 115 ka (except for an excursion around $117.7 - 117 \text{ ka}$) and
287lowest values from 115 to 112 ka . This trend is opposite for P, with highest concentrations between 115
288and 112 ka .

289 Trace element distance series of RSM-17 are shown in Fig. 7. Thick layers, consisting of alternations
290 between dense, dark calcite and white, porous calcite occur before 545 mm dft. After 545 mm, layers are
291 significantly thinner. All elements display sinusoidal variations corresponding with the visible layering.
292 Magnesium concentrations are higher after 545 mm dft and Sr and Ba variations are in antiphase with Mg
293 and show a decrease after 545 mm dft. U behaves in a similar way as Sr and Ba, although the transition
294 between higher and lower concentrations at 545 mm dft is more gradual. Aluminum and Zn have higher
295 concentrations after 545 mm dft similar to Sr, Ba and U. Concentrations of P and Y are higher before 545
296 mm dft.

2975. Discussion

2995.1 Age-depth models

300 The age-depth models for the two new speleothems (Han-8 and RSM-17) and the improved model of
301 Han-9 are shown in Fig. 3. The studied samples roughly span the period between 125 ka and 100 ka, with
302 all three speleothems covering 121 ka to 117.5 ka and 113 ka to 111 ka. Although Han-9 and Han-8 were
303 located just 0.5 m apart, their age-depth models are substantially different from each other. More specific,
304 Han-9 starts growing about 4 ka before Han-8 and shows much larger variations in growth rate, with two
305 hiatuses occurring. The basal age of the RSM-17 core is 120 ka, however the base of the stalagmite was
306 not sampled.

307 Han-9

308 The additional Han-9 ages provide the ability to improve the existing age-depth model. Han-9
309 displays intermittent growth with 3 growth phases (GP's) separated by two hiatuses (Fig. 3). GP 1 starts at
310 125.3 ± 0.6 ka with stable growth rate of 20 mm ka^{-1} . After 121 ka, growth rate significantly increases to
311 150 mm ka^{-1} . Date 1 (Table 1, Fig. 3) confirms the high growth rate at the end of GP 1 from 121 ka to
312 117.3 ka. A first hiatus starts at $117.3 +0.4/-0.8$ ka. Compared to the earlier model by Vansteenberge et al.
313 (2016), date 1 reduces the error of the age-depth model on the start of the first hiatus, i.e. from 117.3
314 $+0.7/-1$ ka to $117.3 +0.4/-0.8$ ka. The hiatus lasts $4.5 +0.8/-1.2$ ka and at 112.8 ± 0.4 ka the second growth
315 phase starts. During this GP, growth rate remains at a constant pace of 40 mm ka^{-1} until approximately
316 110.5 ka, where it decreases to 6 mm ka^{-1} . Date 2 is considered as an outlier and was disregarded during
317 the modeling algorithm. Date 3, taken at the end of the second growth phase, confirms the earlier
318 hypothesis of severely decreased growth rate between ~ 110 and ~ 106 ka (Vansteenberge et al., 2016). At
319 106.2 ± 0.5 ka, GP2 ends. The second hiatus lasts until $103.8 +0.6/-0.5$ ka. The ages of GP 3 provided by
320 Vansteenberge et al. (2016) contain several age inversions. The model presented here, with GP 3 between

321103.8 \pm 0.6/-0.5 ka and 99.7 \pm 0.3 ka is based on the newly added dates in this study (date 4 and date 5).
322Four dates were considered as outliers and were not taken into account to construct the age model (Fig.
3233). The model now displays a slow growth at the start of GP3 at 103.8 \pm 0.5 ka, followed by an increase in
324growth rate at \sim 100.8 ka. Given this age-depth model, stable isotopes were analyzed with a temporal
325resolution between 100 and 0.3 years, and an average of 16 years.

326 Han-8

327 All Han-8 dates are stratigraphically consistent, making the age-depth model robust and
328straightforward. Han-8 starts growing at 122.6 \pm 0.6/-0.5 ka. Throughout its growth, a more or less
329constant growth rate of \sim 20 mm ka⁻¹ is maintained. A discontinuity in the speleothem, at 81.5 mm dft
330(Fig. 2), appears to represent a short hiatus that starts at 117.7 \pm 0.4 ka and ends at 117.0 \pm 0.3 ka.
331However, the duration of this hiatus is only slightly longer than the error of the age model. Han-8 stops
332growing at 111.9 \pm 0.5 ka.

333RSM-17

334 The U-Th ages of RSM-17 show scatter between 1100 and 670 mm dft, with several age inversions.
335Yet, this scatter is believed to be caused by extreme high growth rates, up to 240 mm ka⁻¹, which is
336reflected in the presence of layers up to 1 mm thick. The layers are assumed to be annual since 1) the
337similarity of the dark-light layer couplets to those of actively growing annually layered speleothems
338(Verheyden et al 2006; Van Rampelbergh et al., 2014; 2015) in Han-sur-Lesse cave and 2) the sinusoidal
339variations of trace element proxies in one dark-light layer couplet which are similar to those observed in
340actively growing annually layered stalagmites (Fig. 7). Counting of these layers in between U-Th dates
341could not confirm nor did it reject the hypothesis of the annual nature of these layers. To construct the
342RSM-17 age-depth model shown in Fig. 3, date 4 and date 9 were considered as major outliers and
343removed during the StalAge age-depth modeling process. The final model shows that the bottom of the
344RSM-17 core is 120.0 \pm 0.4 ka old. High growth rates ($>$ 200 mm ka⁻¹) are maintained until \sim 116.5 ka, with
345the exception of short decrease at \sim 118 ka. From 115 ka, growth rate lowers to 100 -120 mm ka⁻¹ which is
346maintained throughout the upper part of the core, dated at 112.7 \pm 0.8/-0.9 ka.

3475.2 Alignment of Han-9 and Han-8 age-depth models

348 To construct an even more precise chronology for the Eemian Weichselian transition and other
349climatic events during the last glacial inception, Han-8 and the adjusted Han-9 age-depth models are
350aligned to each other based on their $\delta^{13}\text{C}$ record. Conventionally, in alignment strategies, one record is
351aligned to another reference record of which the chronology is well-established based on simultaneous

352changes in a climate variable or proxy (Govin et al., 2015). In this case, both Han-8 and Han-9 have an
353independently constructed chronology. Therefore, it would be incorrect to select one sample as the
354reference record by assuming that this sample has the correct age-depth model. To avoid this, both age-
355depth models are aligned to each other and the average of both models is calculated, with both age-depth
356models contributing equally to the resulting model. The proxy used for aligning both records is $\delta^{13}\text{C}$.
357Variations in Han-9 $\delta^{13}\text{C}$ are interpreted to reflect changes in vegetation activity above the cave, resulting
358from changes in the type of vegetation cover (Vansteenberghe et al., 2016). Changes in vegetation activity
359should therefore result in a similar Han-8 $\delta^{13}\text{C}$ record, but only if there is no overprint of kinetic
360fractionation. Checking for kinetic fractionation by applying Hendy Tests (Hendy, 1971) is not feasible
361since individual layers cannot be identified due to the low growth rates of both stalagmites. However, the
362striking similarity between both Han 8 and 9 $\delta^{13}\text{C}$ isotopic profiles, even in terms of absolute values (Fig.
3634), is a strong argument for the absence of important kinetic effects that could have overprinted the
364vegetation signal. This Replication Test to evaluate the likelihood of calcite deposition under isotopic
365equilibrium is proposed by Dorale and Liu (2009) as a better alternative for the Hendy Test. Alignment of
366both records is carried out by arbitrarily selecting eight tie-points between 123 and 111 ka, as shown in
367Fig. 4, that are interpreted to represent a similar point in time. Next, the ages of these points are extracted
368from each of the two age-depth models and the average age is calculated (Table 2), after which a new age-
369depth model is constructed for both speleothems based on these average ages. The 2σ uncertainty of the
370new age-depth model is calculated with the average of the upper and lower 2σ values of the original age-
371depth models. Also, as shown in Table 2, the newly calculated age-depth model lies within the age
372uncertainty of the original Han-8 and Han-9 age-depth models. For example, the start of the first hiatus in
373Han-9 and the small hiatus in Han-8 occur at $117.3 +0.4/-0.8$ ka and 117.7 ± 0.4 ka, respectively. In the
374new aligned age-depth model, the start of both hiatuses is interpreted to occur at the same time, which is
375 117.5 ± 0.5 ka. Other proxy time-series, such as $\delta^{18}\text{O}$ and trace elements, are then constructed using this
376aligned age-depth model. The $\delta^{13}\text{C}$ record of RSM-17 was not included in the alignment because of the
377higher uncertainties in the age-depth model.

3785.3 Eemian acme between 125.3-117.5 ka

379The terminology proposed by Govin et al. (2015) is followed in this study, i.e. the term ‘acme’ is used to
380represent the interval of peak values in climate or environmental record that is contained within the LIG.
381All three speleothems show the presence of Eemian $\delta^{13}\text{C}$ acme conditions between 125.5 and 117.5 ka.
382This is indicated by the low $\delta^{13}\text{C}$, suggesting vegetation similar to that of today, i.e. dominated by
383temperate tree species, which reflects warm and moist conditions. The start of Han-9 speleothem growth

384 is interpreted to reflect the presence of relatively wetter conditions between 125 and 124 ka
385 (Vansteenberghe et al., 2016), as earlier identified in speleothems from southwest France (Couchoud et al.,
386 2009) and central Europe (Demény et al., 2017). Yet, the ELSA vegetation record (Eifel, Germany,
387 Sirocco et al., 2005) and speleothems from Corchia Cave (Italy, Drysdale et al., 2005) suggest the
388 presence of warm and moist last interglacial conditions before Han-9 starts growing at 125.3 ka. Which is
389 consistent with the very low Han-9 $\delta^{13}\text{C}$ of ~ 9 ‰ at 125.3 ka. So far, Han-9 is the oldest known Last
390 Interglacial speleothem formation from Han-sur-Lesse and other caves in Belgium. Although older LIG
391 speleothems could be present (but have not been identified yet) it is hypothesized that an effective
392 precipitation increase at 125.5 was necessary besides the already present LIG acme to initiate speleothem
393 formation. This short period of wetter conditions, that initiated Han-9 growth, likely follows as what can
394 be described as a ‘mid-Eemian climate depression’, i.e. a short duration of colder and dryer conditions
395 occurring around 126–125 ka, which is reflected in European pollen records. For example, vegetation
396 reconstructions based on pollen from Lago Grande di Monticchio (Italy) indicate a drop in *Quercus* pollen
397 and a simultaneous increase in Graminae pollen at ~ 125 ka, (Brauer et al., 2007), interpreted a short dry
398 interval. In addition, sediment archives from the North Atlantic (NEAP-18K: Chapman and Shackleton,
399 1999; ODP-980: Oppo et al., 2006; U1304: Hodell et al., 2009; MD03-2664: Galaasen et al., 2014; Irvali
400 et al., 2016) and the Norwegian Sea (Fronval et al., 1998) also showed the presence of a mid-Eemian
401 cooling. Global sea-level reconstructions even suggest the occurrence of a small regression at ~ 125 ka
402 (Hearty et al., 2007, Fig. 8). In the Eifel (Germany), a decrease in *Pinus* and *Betula* pollen and an increase
403 in temperate tree pollen, e.g. *Quercus* and *Carpinus*, follows a short spike in grass pollen abundance at
404 125 ka (Fig. 8). This indicates a transition to warm and wetter conditions during the second part of the
405 Eemian, starting at ~ 124 ka. At 122.1 ka, an increase in $\delta^{13}\text{C}$ of $+1.5$ ‰ in Han-8 and $+1.2$ ‰ in Han-9,
406 respectively, occurs. This increase could potentially be correlated to an observed cold event at 122.3 ka in
407 the Norwegian Sea, expressed by near-glacial ocean surface summer temperatures (Bauch et al., 2011).
408 Additionally, Zhuravleva et al. (2017) identified an intermittent sea surface cooling in the Arctic region
409 triggered by a meltwater release at ~ 122 ka. Overall, the observations from the Han-sur-Lesse
410 speleothems confirm earlier hypothesis that question the general view of stable Eemian optimum
411 conditions between 128 and 117 ka (Bauch et al., 2011; Irvali et al., 2012; Capron et al., 2014; Galaasen
412 et al., 2014; Pol et al., 2014). Also, the Belgian speleothems presented in this study reflect that conditions
413 for speleothem growth were better after 125 ka.

414 5.4 Glacial inception and Eemian-Weichselian transition: a climatic event at 117.7 ka

415 5.4.1 Chronological constraints

416 The Han-8 and Han-9 tuned age-depth models allow a detailed investigation of the timing and rate of
417the Eemian-Weichselian Transition. The EWT in Han-9 was originally identified as the transition from
418forest vegetation to a more grass and shrub like vegetation, causing a decrease in vegetation derived soil
419CO₂ which is reflected in the carbon isotopic record. This transition was linked to the Late Eemian Aridity
420Pulse, recognized in the Eifel pollen records located only 150 km from the cave site (Sirocko et al., 2005).
421Based on the tuned age-depth model, the $\delta^{13}\text{C}$ increase in Han-9 and Han-8 starts at 117.7 ± 0.5 ka. In
422RSM-17, a $\delta^{13}\text{C}$ excursion with similar magnitude occurs at $118.1 +0.4/-0.3$ ka. Despite a small offset in
423timing (Fig. 3), although an overlap in the 2σ error of both ages is present, the $\delta^{13}\text{C}$ excursion in RSM-17
424is considered to represent the same event as the $\delta^{13}\text{C}$ excursion in the Han-sur-Lesse speleothem records.
425Because of the higher precision of the Han-8 and Han-9 age-depth models, the age of 117.7 ± 0.5 ka is
426adapted for the onset of this event. Although the increase in $\delta^{13}\text{C}$ is not entirely monotonic in both Han-
427sur-Lesse records, a total increase of $\sim 4\text{‰}$ is accommodated in about 0.2 ka, before the start of the
428discontinuity in both records at 117.5 ± 0.5 ka. Due to the occurrence of growth interruptions in the Han-
429sur-Lesse speleothems, it is difficult to establish the duration of the event. Yet varve counting on the
430nearby ELSA record (Eifel, Germany) has provided a duration of 468 varve years for the LEAP (Sirocko
431et al., 2005).

4325.4.2 Paleoclimate changes during the glacial inception

433 The newly added records of Han-8 and RSM-17 allow to investigate the paleoclimate changes during
434the glacial inception. Looking at Han-8 $\delta^{13}\text{C}$, the increase in centennial, large-amplitude variability after
435the onset of the event at 117.7 ± 0.5 ka is striking (Fig. 5). This is in clear contrast with more stable $\delta^{13}\text{C}$
436values before 117.7 ka. In Han-8, these variations in $\delta^{13}\text{C}$ briefly return to pre-117.7 ka values -6.8‰ at
437115.1 ka and 111.9 ka. In the RSM-17, similar observations are made with a larger variability before
438118.1 $+0.4/-0.3$ ka. The increase in $\delta^{13}\text{C}$ variability is interpreted to reflect increased degradation of soil
439activity, caused instability of the vegetation assembly above the cave, rapidly switching between a dense
440tree cover and more open grass and shrub vegetation. Since the Eemian in northwestern Europe is defined
441as a warmer climate interval associated with the spread of temperate mixed forests in areas with similar
442vegetation today (Kukla et al., 2002) and because of the distinct difference in $\delta^{13}\text{C}$ isotopic signature
443before and after 117.7 ka in all three investigated speleothem samples, the end of the Eemian, and thus the
444Eemian-Weichselian transition in these records is set at 117.7 ± 0.5 ka. Although short-lasting episodes of
445forest recovery occur after 117.5 ka, e.g. at 115.1 and 111.9 ka (Fig. 5), millennial scale stable conditions
446similar to that observed during the Eemian optimum (~ 125 -118 ka) are not observed anymore.

447Consequently, the onset of the glacial inception in the Belgian speleothem record, following the EWT, is
448set at 117.7 ± 0.5 ka.

449 The high-resolution records of RSM-17 provide additional insights in the paleoclimate changes
450occurring at the EWT. Figure 6 show the changes in $\delta^{13}\text{C}$ and Figure 7 shows the changes in trace element
451concentrations. Figure 6 and 7 are plotted on a distance axis because of the higher uncertainty in the
452RSM-17 age-depth model. Yet, the Han-sur-Lesse chronology has shown that the start of the $\delta^{13}\text{C}$
453excursion, and thereby the EWT, can be set at 117.7 ± 0.5 ka. In RSM-17, this $\delta^{13}\text{C}$ increase starts at
454561.5 mm dft. At 561.5 mm dft, the speleothem morphology is still similar to that observed during the
455Eemian optimum, i.e. thick layers consisting of an alternation between white porous calcite and brown,
456dense calcite (Fig. 2 and Fig. 6). This is in contrast with the internal speleothem morphology of RSM-17
457that is observed after 545 mm dft, consisting of white porous calcite containing only very thin laminae
458(Fig. 6). This severe reduction in layer thickness evidences a decrease in growth rate of RSM-17 at that
459time. The increase in $\delta^{13}\text{C}$, from -12.5 to -8 ‰, starts at 561.5 mm dft. However, it is not until 545 mm dft
460mm that the morphology of the speleothem suddenly changes (Fig. 6). Taking into account that the layers
461are annual (see section 6.1), layer counting indicates that speleothem morphology changes at least 18
462years after the start of the $\delta^{13}\text{C}$ increase (Fig. 6), implying that vegetation started changing before a
463decrease in speleothem growth rate took place. This has important consequences for the paleoclimatology
464of the late event starting at 117.7 ± 0.5 ka. The term ‘late Eemian aridity pulse’, which is the equivalent of
465this event in the Eifel region (Germany), refers to a dry event, yet it was interpreted as ‘an event with dust
466storms, aridity, bushfire and a decline in thermophilous trees by a decrease in both precipitation and
467temperature’ (Sirocko et al., 2005). In case of RSM-17, the lead of the vegetation switch, shown by the
468increase in $\delta^{13}\text{C}$, on the change speleothem in morphology and thus growth rate suggests that the event is
469initiated by a drop in temperature rather than a drop in precipitation amount. If a decrease in precipitation
470initiated the event, the $\delta^{13}\text{C}$ and the growth rate would change at the same time. Following an initial cold
471pulse, vegetation changes from a tree-dominated assembly towards a grass/shrub dominated assembly.
472Due to this change in biomass, vegetation-derived CO_2 in the soil, originating from root respiration and
473degrading soil organic matter, lowers. This in turn lowers the dissolved CO_2 in the waters infiltrating the
474epikarst. The CO_2 decrease renders the infiltrating waters less acidic and diminishes the potential of
475limestone dissolution, eventually leading to a decreased Ca^{2+} content of the drip water resulting in a
476decreased growth rate. This is also reflected in the Han-8 and Han-9 speleothems: the hiatus only starts at
477 117.5 ± 0.5 , which is 0.2 ka after the decrease in $\delta^{13}\text{C}$. Further evidence supporting the hypothesis that the
478event is initiated by a cold pulse and that decreased precipitation lags this cold pulse is provided by trace
479element variations in RSM-17 (Fig. 7). Right at the point where the RSM-17 morphology changes from

480thick annual layers to very fine laminae, identified to reflect the change in water availability (red line in
481Fig. 7), Mg increases while Sr and Ba decrease. Variations of host rock derived trace elements in
482speleothems, such as Mg, Sr and Ba, have often been interpreted to reflect changes in prior calcite
483precipitation (e.g. Fairchild and Treble, 2009). Prior calcite precipitation (PCP) is the process of calcite
484precipitation upstream of the site of speleothem deposition, and predominantly occurs during dryer
485periods (Fairchild et al., 2000; Fairchild and Treble, 2009). In RSM-17, Mg concentrations increase from
486~150 $\mu\text{g g}^{-1}$ to 300 $\mu\text{g g}^{-1}$ at approximately 545 mm dft (Fig. 7). This increase does not occur simultaneous
487with the increase in $\delta^{13}\text{C}$ at 561.5 mm dft (Fig. 6), but it starts where the change in speleothem
488morphology is observed (Fig. 6), suggesting a similar control on Mg variations and growth rate. The
489observed changes in Mg concentration fit with the process PCP, with higher concentrations during periods
490with less water availability and thus lower growth rates. Concentrations of Sr and Ba behave opposite
491with respect to Mg, suggesting no control of PCP on Sr and Ba. Dolomite dissolution has been evoked in
492the past to explain an antiphase behavior of Mg and Sr (Roberts et al., 1998), even in Han-sur-Lesse cave
493(Vansteenberghe et al., in review). However, Mg concentrations in RSM-17 average at 194 $\mu\text{g g}^{-1}$, which is
494very low and questions the influence of dolomite in the host rock on the speleothem geochemistry. A more
495likely mechanism controlling Sr and Ba variations in RSM-17 is the speleothem growth rate.
496Experimental studies have shown that the partitioning of Sr in calcite increases with the precipitation rate
497(Lorens, 1981; Pingitore and Eastman 1986). Yet, from cave-analogue experiments Day and Henderson
498(2013) concluded that growth rate changes smaller than a factor 2.5 are unlikely to have any effect on the
499partitioning of Sr in cave calcite. However, if RSM-17 layer thickness is presumed to act as a proxy for
500growth rate, a decrease in growth rate by a factor >2.5 at the morphological transition is definitely
501plausible (Fig. 6-7). In a similar way, Bourdin et al. (2011) interpreted changes in earth-alkaline elements,
502and more specific an antiphase behavior of Mg versus Sr and Ba, in a stalagmite from Chauvet Cave
503(France) as a result of changes in growth rate. It is concluded that in the case of RSM-17, Mg variations
504reflect a changing amount of PCP in the epikarst while the effect of growth rate dominates over PCP for
505controlling variations in Sr and Ba concentrations. The U concentration in RSM-17 is also lower after 545
506mm dft (Fig. 7). Bourdin et al. (2011) suggested that the main source of U in speleothem drip waters is
507limestone dissolution. The observed lower U concentrations in RSM-17 are thus in agreement with
508decreased bedrock dissolution at a time when lower growth rates are observed after 545 mm dft.

509 At 545 mm dft, the amplitude of variation in P and Y diminishes severely (Fig. 7). In speleothems, P
510originates from vegetation dieback (Fairchild et al., 2001; Huang et al., 2001, Treble et al., 2003; Borsato
511et al., 2007) and is transported towards the speleothem via the binding to organic acids. Although
512vegetation is believed to constitute the main source of P concentration in speleothems, leaching of

513phosphate minerals in the epikarst has also been identified as a process that potentially contributes P to
514speleothems (Frisia et al., 2012). Yttrium is commonly transported into speleothems by binding to natural
515organic matter (Borsato et al., 2007; Hartland et al., 2012). The decrease in concentration of both
516elements in RSM-17 is therefore interpreted to reflect decreased amounts of organic matter within the
517soil, due to a lower vegetation productivity which is in agreement with the decreased vegetation activity
518interpreted from the $\delta^{13}\text{C}$ record. Both P and Y concentrations are lower when the speleothem growth rate
519decreases. This confirms the influence of vegetation productivity and vegetation-derived soil CO_2 on the
520speleothem growth rate. The Al and Zn display an increase at 550 mm dft, shortly after the morphological
521change. The paleoclimatological significance of Al is not commonly studied in speleothems, but Al
522variations likely reflect an enhanced detrital input into the speleothem, since Al is a major element in clay
523and fine detrital material and it is dominantly transported into speleothems via larger detrital particles
524(Fairchild and Treble, 2009). Increased detrital input can result from increased accumulation of fine
525particles in dryer cave environments, rather than through the drip water. Zinc behaves opposite to Y, with
526higher concentrations after 50 mm. Yet, previous studies have shown that Zn, like Y, is preferentially
527transported into speleothems through binding to natural organic matter (Hartland et al., 2012; Wynn et al.,
5282014). Because Zn concentration shows similar trends as Al concentration within the speleothem, Zn is
529interpreted to have detrital signature, similar to Al, rather than an organic matter signature, such as Y.

530 5.4.3 Regional to global significance of the 117.7 ka event

531Numerous paleoclimate records have reported the presence of a short-lasting and drastic climate event at
532the end of the Eemian or MIS 5e. The 117.7 ka event as observed in the Belgian speleothems can be
533related to most of these late Eemian/MIS 5e climate deterioration or events observed in other records
534(Fig. 8). Besides the earlier mentioned pollen record from the Eifel at 118 ± 1 ka (Sirocko et al., 2005,
535Fig. 8), a brief reduction in forest cover occurring between 118.2 and 117.5 ka was also identified in
536Ioannina and Kopais pollen records, Greece (Tzedakis et al., 2003). In lake cores retrieved from Lago
537Grande di Monticchio (Italy) a slight decrease in the percentage of woody taxa pollen is observed at
538between 118 and 117 ka (Fig. 8, Brauer et al., 2007; Allen and Huntley, 2009). Additional temperature
539reconstructions based on pollen records from La Grande Pile (France) and Lago Grande di Monticchio
540(Italy) have indicated that at ~ 117 -118 ka a short temperature decrease occurs that fits with the event
541observed in the Belgian speleothems. Precipitation reconstructions show a simultaneous decrease in
542precipitation, yet in contrast to temperature, precipitation does not recover after the event (Brewer et al.,
5432008). In the La Grande Pile pollen record (Vosges, France) a cold and dry event, the Woillard event
544(Kukla et al., 1997), was identified just before the end of the Eemian, characterized by a rapid
545replacement of the temperate hardwood forest by boreal vegetation (Woillard, 1978). Similar vegetation

546 changes in pollen records from eastern Poland (Granoszewski, 2003) were likewise correlated to the
547 Woillard event by Helmens (2014). However, because Eemian vegetation is suspected to last longer in
548 southern Europe (Müller and Sanchez Goñi, 2007), the Woillard event is generally placed later in those
549 records (e.g. Brauer et al., 2007). Despite the clear presence of the 117.7 ka event in European pollen
550 records, the event is still underrepresented in European speleothem records. To the extent of our
551 knowledge, the event can be correlated with only two other speleothem records. The first is the TKS
552 flowstone retrieved from the Entrische Kirche in the Austrian Alps (Fig. 1a, Meyer et al., 2008). The TKS
553 $\delta^{18}\text{O}$ displays a fast, ~ 4 ‰ decreases in $\delta^{18}\text{O}$ centered at 118 ± 2 ka (Fig. 8), which was interpreted to
554 reflect a strong cooling. However, in the TKS $\delta^{13}\text{C}$ no excursion similar to that observed in the Belgian
555 speleothem datasets is present. The second dataset contains the BAR-II duplicate speleothem record
556 (Demény et al., 2017). The BAR-II speleothem was retrieved from the Baradla Cave, northeastern
557 Hungary. The BAR-II $\delta^{18}\text{O}$ shows a sudden decrease at 117.0 ± 0.8 ka (Fig. 8), interpreted to reflect an
558 arid pulse. At the same time, a ~ 2 ‰ increase is observed in the $\delta^{13}\text{C}$. Other European speleothem
559 records, such as the Corchia Cave speleothems (Drysdale et al., 2005; 2007), speleothems from the Alps
560 (Boch et al., 2011; Moseley et al., 2015) and speleothems from the Levant (Bar-Matthews et al., 2003;
561 Nehme et al., 2015), do not record any anomalies in their stable isotope proxies.

562 Besides (European) continental records, clear evidence from high-resolution marine sediment
563 archives of a climate anomalous event around 117 to 118 ka in the North Atlantic realm exists. The
564 presence of a cold event at the Eirik Drift, South of Greenland in the North Atlantic Ocean (Fig. 1a),
565 which occurs just before the end of the MIS 5e benthic $\delta^{18}\text{O}$ plateau, is reported by Galaasen et al. (2014)
566 and Irvani et al. (2016). More specific, an increase in $\delta^{18}\text{O}$ of planktonic foraminifera and an increase in
567 the amount of ice rafted debris (IRD) occur at ~ 117 ka in marine sediment core MD03-2664, indicating
568 the presence of colder conditions in that area (Fig. 9). According to the age model presented in Irvani et al.
569 (2016), this event lasts about 0.4 ka, which is similar to the LEAP observed in the ELSA record (Sirocko
570 et al., 2005). High-resolution $\delta^{13}\text{C}$ analysis of epibenthic foraminifera (*C. wuellerstorfi*, Fig. 9) indicates
571 that during this event, the formation of North Atlantic Deep Water was reduced, which is believed to be
572 the cause of the cold conditions during the event (Galaasen et al., 2014). In the Bermuda Rise (western
573 Atlantic Ocean, Fig. 1a), similar observations were made, i.e. an increase in Cd/Ca and clay flux indicates
574 a shift in deep oceanographic conditions with an increased input of southern source waters compared to
575 NADW (Fig. 9). This shift occurred in approximately 400 years at ~ 118 ka (core MD95-2036; Adkins et
576 al., 1997). Later on, Lehman et al. (2002) calculated ~ 3 °C decrease in sea surface temperature in MD95-
577 2036 at ~ 118 ka. A core retrieved from the Norwegian Sea (ODP-980; Oppo et al., 2006) shows a distinct
578 decrease in sea surface temperature and lithic fragments at ~ 118 ka. It is thus apparent that an event,

579equivalent to that observed in the Belgian speleothems at 117.7 ± 0.5 ka, is occurring in the North Atlantic
580region. In particular, the increase in IRD in sediment cores reflects growth regional ice sheet growth
581(Irvali et al., 2016). Global sea-level reconstructions inferred from coastal deposits (e.g. corals) indicate a
582rapid fall of the above-present sea-level at the end of MIS 5e after 118 ka (Fig. 9, Hearty et al., 2007),
583indicating the rapid growth of ice sheets at that time. More precise ages are provided by Moseley et al.
584(2013), who inferred from presently submerged speleothems of the Yucatan peninsula that MIS 5e sea-
585level dropped to -4.9 m by 117.7 ± 1.4 ka.

586 However, the age-depth models of these marine records are often constructed using climato-
587stratigraphic alignment strategies (Govin et al., 2015) and the chronology of these records is therefore not
588absolutely and independently constrained. Yet, the similarity in timing, duration and climatologic
589expression suggests that Belgian speleothems, European pollen archives and marine sediment cores from
590the North Atlantic realm registered the same climatic event. So what could have caused such a widespread
591rapid, short-lasting cooling event as observed in the Belgian speleothems at 117.7 ± 0.5 ka and other
592continental European and North Atlantic records? The presence of Eemian optimum conditions between
593125-120 ka is evident from several European paleoclimate reconstructions (Fig. 8 and section 6.3). Such
594optimum conditions at that time caused a significant degree of ice mass loss, resulting in peak eustatic
595sea-levels up to +6 to +9 m between \sim 120 and 118 ka compared to present (Fig. 9). This peak in eustatic
596sea-level, 2 to 6 m above the MIS 5e average sea-level (Hearty et al., 2007; Blanchon et al., 2009; Dutton
597and Lambeck, 2012; O'Leary et al., 2013; Sivan et al., 2016), would require melting of a substantial
598amount of the Greenland ice sheet and perhaps even a small contribution by melting of the West Antarctic
599ice sheet (Hearty et al., 2007). This enhanced melting would induce a significant input of freshwater in
600the North Atlantic. In model simulations, a large freshwater flux resulting from the northern hemisphere
601ice sheet loss leads to a temporary abrupt weakening of the Atlantic meridional overturning circulation
602(AMOC), causing a strong decrease in global annual mean temperature (Loutre et al., 2014). Potential
603evidence for a reduced formation of NADW related to AMOC weakening during the 117.7 ka event, has
604been found in the sediment core from the Erik Drift, South of Greenland (Galaasen et al., 2014). In the
605frame of these findings, the cooling event at 117.7 ± 0.5 ka that resulted in a vegetation shift observed in
606the Belgian speleothems, is due to weakening of the AMOC and reduction of NADW formation. This
607cooling event crossed a critical threshold for a vegetation shift towards a decrease in tree species to occur
608in Western Europe at 117.7 ka, which is evident from the speleothems' $\delta^{13}\text{C}$ record.

6096.5 Early Weichselian millennial climate variability (117.5 – 100 ka)

610 During the glacial inception, which is set at 117.7 ka, with the start of the cold event detected in the
611 Belgian speleothem records, an increased variability in $\delta^{13}\text{C}$, suggesting increased vegetation instability,
612 is observed. In Han-8, other proxies such as $\delta^{18}\text{O}$ and Mg, Sr, Ba and also U show a more gradual
613 decrease towards minimum values at ~ 114.3 ka (Fig. 5). These proxies reflect a gradual decline of
614 interglacial paleoclimate conditions characterizing the glacial inception. The timing of appearance of this
615 gradual decline is in line with observations from other records in continental Europe and the North
616 Atlantic (Fig. 8 and 9). Han-8 $\delta^{18}\text{O}$ and Mg, Sr, Ba and U remain at a minimum until ~ 112 ka. At the same
617 time of this minimum observed in the speleothem records, a slightly warmer stadial period occurs in
618 Greenland, i.e. Greenland Interstadial (GI) 25. In this study, the NGRIP d18O data is plotted on the
619 GICC05modelext timescale (Wolff et al., 2010). This chronology is preferred over the AICC2012 (Bazin
620 et al., 2013; Veres et al., 2013) because of 1) the proximity of the Greenland ice core archives over the
621 Antarctic ice core archives (Govin et al., 2015) and 2) the synchronous appearance between Greenland
622 Stadials 25 and 24 in NGRIP record on a GICC05modelext timescale and the expression of these stadials
623 in continental Europe recorded in Alpine speleothems (Boch et al., 2011). Capron et al. (2010) showed
624 that the GI-25 warming in Greenland is of significantly lower amplitude than the following interstadial
625 events (3 ± 2.5 °C compared to 8-16 °C) and concluded that GI-25 represents a local climate feature in
626 Greenland rather than later global interstadial events. This implies that GI-25 did not persist in continental
627 Europe, and confirms why there is no distinct signature of a GI-25 equivalent event in the speleothem
628 record. Other European speleothems and pollen records (Fig. 8), do not show a distinct GI-25 equivalent
629 signature as well, evidencing that this stadial was not as prominent as the following GI-24. Yet, at ~ 112
630 ka, Han-8 $\delta^{18}\text{O}$ and Mg, Sr, Ba and U increase again. This increase shows affinity with a short warming
631 event observed at in the NGRIP record at the end of GI-25, defined as 'GIS 25s' (Capron et al., 2012), but
632 later labeled as GI-25a by Ramsussen et al. (2014). It is remarkable, especially for the Han-sur-Lesse
633 speleothems, that the stadial/interstadial events are reflected not only in the paleoclimate proxies (e.g. GS-
634 25 in Han-9 $\delta^{13}\text{C}$) but also in the growth rate of the speleothems. For example, Han-8 stops growing at the
635 start of GS-25 in the NGRIP record, and at the same time a severe decrease in growth rate is observed in
636 Han-9 (Fig. 3). Moreover, the second hiatus in Han-9 corresponds in timing to GS-24. From the Han-9
637 growth rate (Fig. 3), it appears that the Han-9 speleothem never fully recovered from GS-25, and
638 additional cooler-drier conditions at the onset of GS-25 were sufficient to cease speleothem formation
639 (Vansteenberghe et al., 2016).

6406. Conclusions

641 Following conclusions are reached:

- 642 1. The two newly added Belgian speleothem records Han-8 and RSM-17 confirm the general
643 climatic trends of the Eemian to early Weichselian observed in Han-9. Especially the
644 reproducibility of the Han-9 $\delta^{13}\text{C}$ record with the coeval Han-8 speleothem is remarkable,
645 confirming the hypothesis of Vansteenberghe et al. (2016) that $\delta^{13}\text{C}$ represents a regional climate
646 signal controlled by vegetation activity, reflecting vegetation assembly above the cave.
- 647 2. These two newly studied speleothems also show rapid increase in $\delta^{13}\text{C}$, similar to the earlier
648 observed rapid 4 ‰ increase in Han-9 $\delta^{13}\text{C}$ at 117.5 ± 0.5 ka. This $\delta^{13}\text{C}$ increase in Han-9 was
649 interpreted to represent a rapid change in vegetation, from dominated by temperate tree species
650 towards dominated by grasses and shrubs which was caused by fast cooling and/or drying of the
651 regional climate. This event shows a strong affinity in terms of timing and climatic expression
652 with the Late Eemian Aridity Pulse (LEAP), identified in the nearby ELSA vegetation stack and
653 characterized by an increase in grass pollen and loess content at 118 ± 1 ka (Sirocko et al., 2005).
654 Aligning the chronologies of the two independently dated Han-sur-Lesse speleothem records
655 (Han-8 and Han-9) assign a more precise absolute age of 117.7 ± 0.5 ka to the start of this event.
656 In both speleothems, a hiatus starts at 117.5 ± 0.5 ka hampering the assessment of the duration,
657 yet in the ELSA stack the LEAP lasts 468 varve years.
- 658 3. The start of the 117.7 ka event in the Belgian speleothems marks an important boundary in the
659 Belgian speleothem proxies between Eemian optimum conditions and increased variability during
660 the glacial inception. The start of this event at 117.7 ± 0.5 ka is therefore proposed as the Eemian-
661 Weichselian transition (EWT) and consequently the start of the glacial inception as registered in
662 the Belgian speleothems and potentially other records in northwestern Europe. This shows the
663 importance of the event, at least in the study area, as a contributor to the last interglacial to glacial
664 transition.
- 665 4. High-resolution analysis of the annually layered Belgian speleothem RSM-17 shows that the $\delta^{13}\text{C}$
666 excursion (and thus vegetation changes) at the EWT starts before a decrease in precipitation
667 which is reflected by trace element concentrations and speleothem morphology. It is therefore
668 hypothesized that the climatic event starting at 117.7 ± 0.5 ka is initiated by a cooling pulse that
669 altered vegetation assembly above the cave. A few decades after this cooling pulse, additional
670 drying of the climate occurs.
- 671 5. An event similar to that observed in the Belgian speleothems at 117.7 ± 0.5 ka event is also
672 present as a short-lived cooling event in several North-Atlantic sediment archives. This indicates
673 a larger regional persistence than previously thought. Through comparison with these sediment
674 archives and global sea-level reconstructions, it is hypothesized that the origin of the cooling
675 event at 117.7 ka is an internal climate response caused by the substantial amount of freshwater

676 input from degraded ice-sheets by the end of the Eemian (~120-118 ka). This is also reflected by
677 peak eustatic sea-level at the end of the Eemian.

678 6. The registration of this event by Belgian speleothems shows a clear climatic connection of these
679 speleothems with other continental European archives and North Atlantic marine archives. This
680 provides future potential of improving less constrained chronologies by alignment to the
681 independently constructed speleothem age-depth models presented in this study.

682 7. Stadial-Interstadial changes are recorded by the speleothem paleoclimate proxies but are also
683 tracked in the growth evolution of the speleothems. This shows that Belgian speleothems are very
684 sensitive recorders of early glacial climate changes.

685

686 **Acknowledgements**

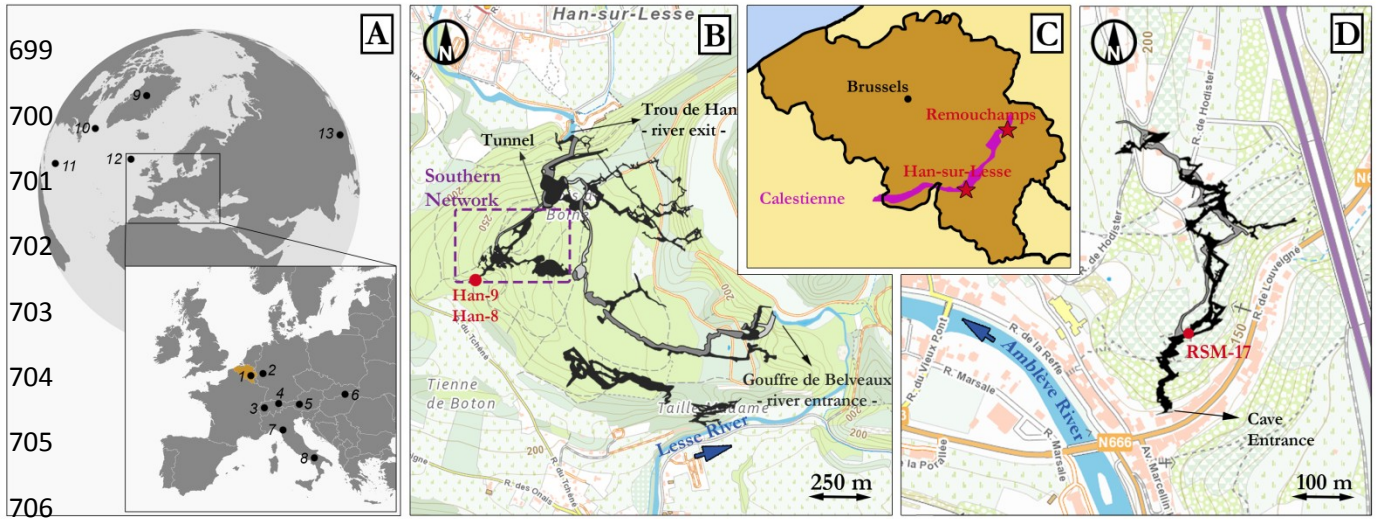
687 We thank M. Gewalt for the first analysis of RSM-17, as well as the cave management of Han-sur-Lesse
688 and Remouchamps Cave for allowing us to retrieve the samples and study the cave environment. We also
689 thank T. Goovaerts for the treatment of the speleothem samples, D. Verstraeten for the lab assistance at
690 the VUB stable isotope lab and J.R.M. Allen and B. Huntley for providing the data of Lago Grande di
691 Monticchio. S. Va. is funded by the VUB Strategic Research Program. P. C. thanks Hercules foundation
692 for the upgrade of the VUB stable isotope lab. Han-8 speleothem was sampled in the frame of the EU
693 H2020 Past4Future Project.

694

695

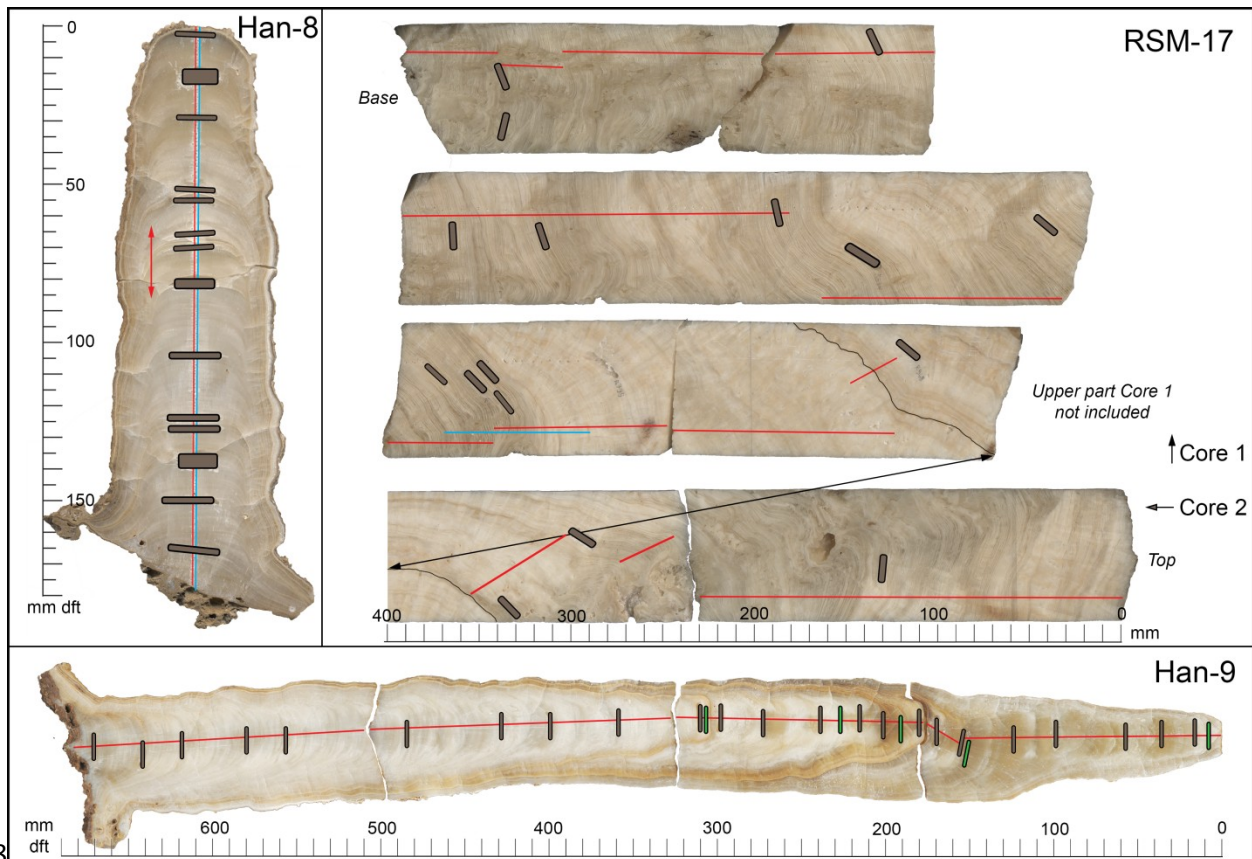
696

697 **Figure 1**



707 **Figure 1:** (A) Location of the most important sites mentioned in the text (1) Han-sur-Lesse and
 708 Remouchamps Cave (this study), (2) Eifel (Sirocko et al., 2005), (3 & 4) NALPS (Boch et al., 2011),
 709 (5) Entrische Kirche (Meyer et al., 2008), (6) Baradla Cave (Demény et al., 2017), (7) Corchia Cave
 710 (Drysdale et al., 2005; 2007; 2009), (8) Lago Grande di Monticchio (Brauer et al., 2007; Allen and
 711 Huntley 2009), (9) NGRIP (NGRIP members, 2004), (10) MD03-2664 (Irvali et al., 2012; 2016;
 712 Galaasen et al., 2014), (11) MD95-2036 (Adkins et al., 1997), (12) ODP-980 (Oppo et al., 2006) and
 713 (13) Dongge Cave (Yuan et al., 2004). (B) Map of Han-sur-Lesse Cave based on Quinif (2006) (C)
 714 Location of the Calestienne and the two cave sites in Belgium. (D) Map of Remouchamps Cave
 715 based on (Ek, 1970).

717Figure 2

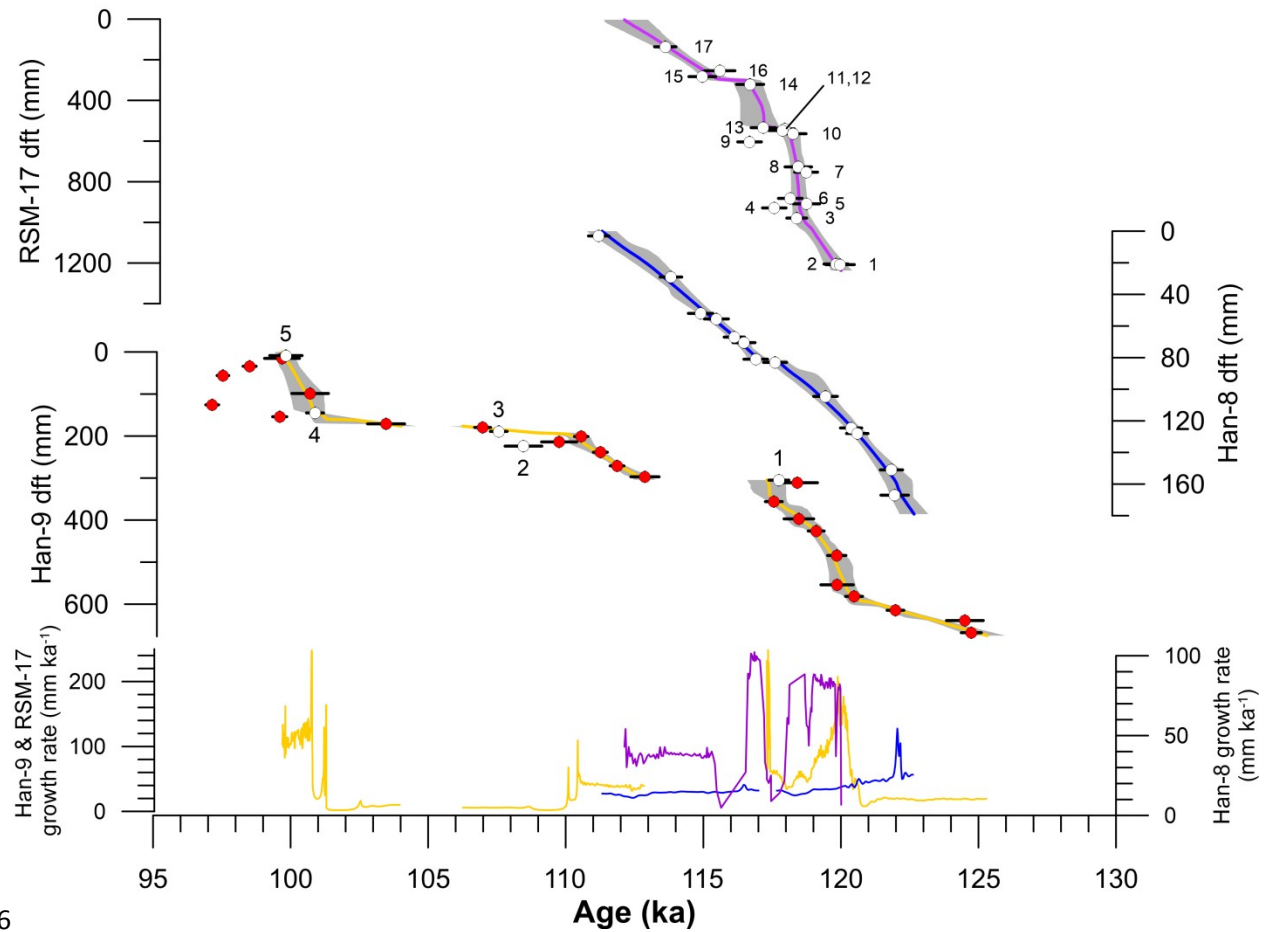


718

719Figure 2: Images of the samples used in this study. Red lines mark the location of the stable isotope
720measurements and blue lines indicate the trace element transects. Grey boxes show the location of
721the U-Th dating samples. Green boxes on Han-9 indicate the additional dates added in this study to
722improve the original age-depth model of Vansteenberghe et al. (2016). Black line in RSM-17 indicates
723the marker layer that was used to correlate Core 1 and 2.

724

725 **Figure 3**

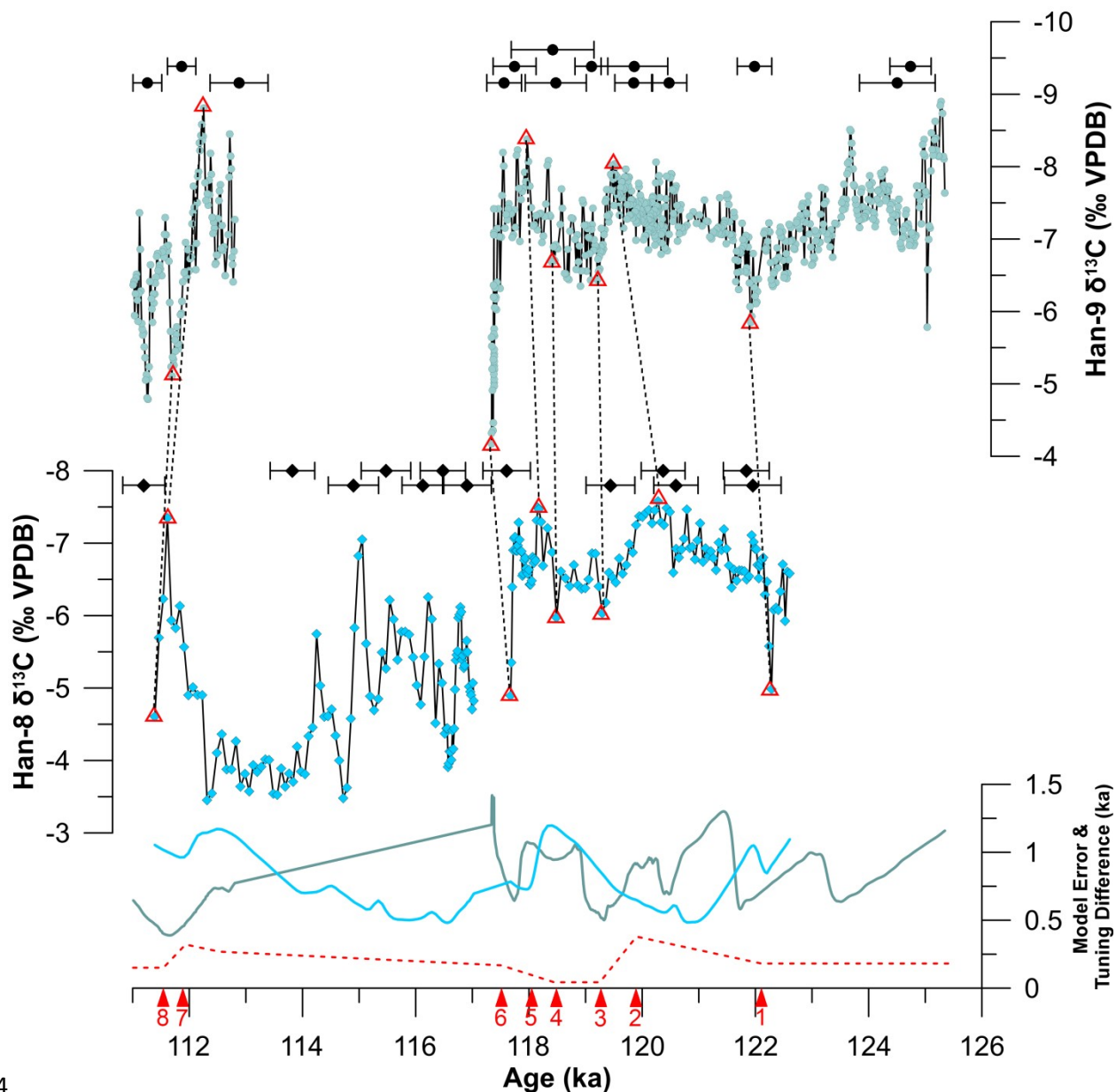


726

727 **Figure 3: U-Th dating results and calculated age-depth models of RSM-17 (purple), Han-8 (blue)**
728 **and Han-9 (yellow). Grey bands denote the 2 σ error. Red U-Th labels mark previously published**
729 **ages by Vansteenberg et al. (2016). Lower graph represents the growth rate of the speleothems in**
730 **mm ka⁻¹. The ages discussed in the text are indicated by numbers.**

731

732



734

735Figure 4: Tuning of Han-9 and Han-8 age-depth models based on their $\delta^{13}\text{C}$ record. Dark blue curve
 736is the Han-9 $\delta^{13}\text{C}$ and light blue is Han-8 $\delta^{13}\text{C}$. U-Th data is shown with black circles (Han-9) and
 737diamonds (Han-8). Red triangles indicate the 8 tuning points, and the specifics are provided in
 738Table 2. Lower graph shows the 2σ error of the individual age-depth models (dark and light blue)
 739and the dashed red line represents the age difference between the original Han-9 age-depth model
 740and the tuned Han-9 age-depth model. See Table 2 for more information about the assigned tie-
 741points.

742

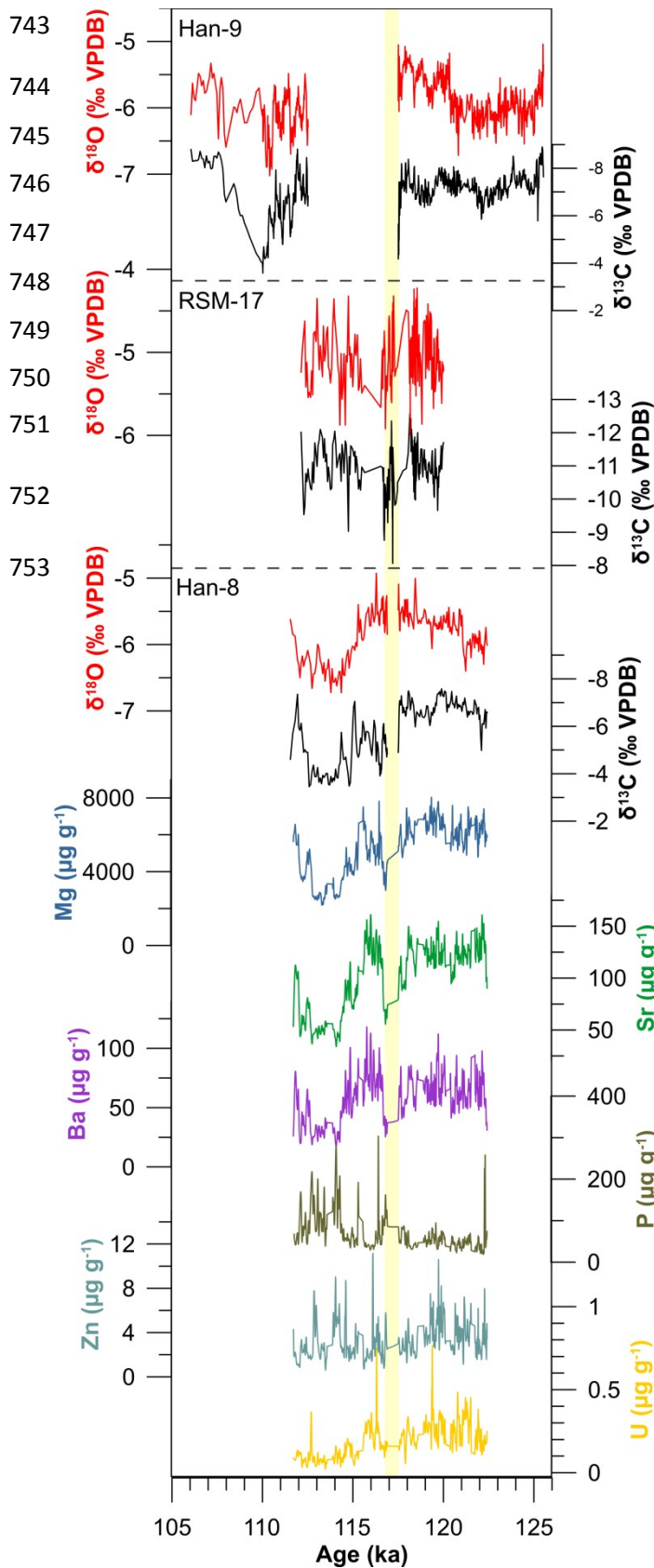
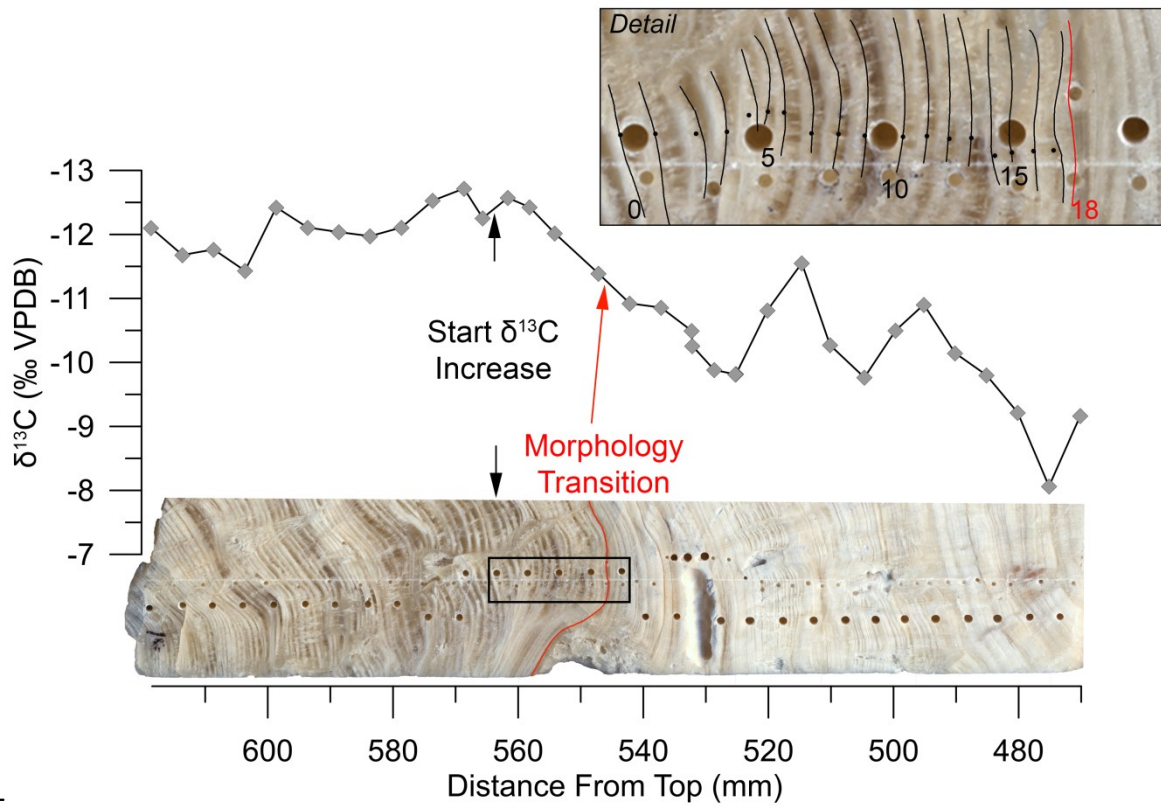


Figure 5: Time-series of the speleothem proxies. Upper: Han-9 $\delta^{13}\text{C}$ (black) and $\delta^{18}\text{O}$ (red) plotted on the tuned age-model. Middle: RSM-17 $\delta^{13}\text{C}$ (black) and $\delta^{18}\text{O}$ (red). Lower: Han-8 $\delta^{13}\text{C}$ (black), $\delta^{18}\text{O}$ (red), Mg (blue), Sr (green), Ba (purple), P (brown), Zn (light blue) and U (yellow) plotted on the tuned age-model. Yellow shading indicates the event at 117.7 ka.

754 **Figure 6**

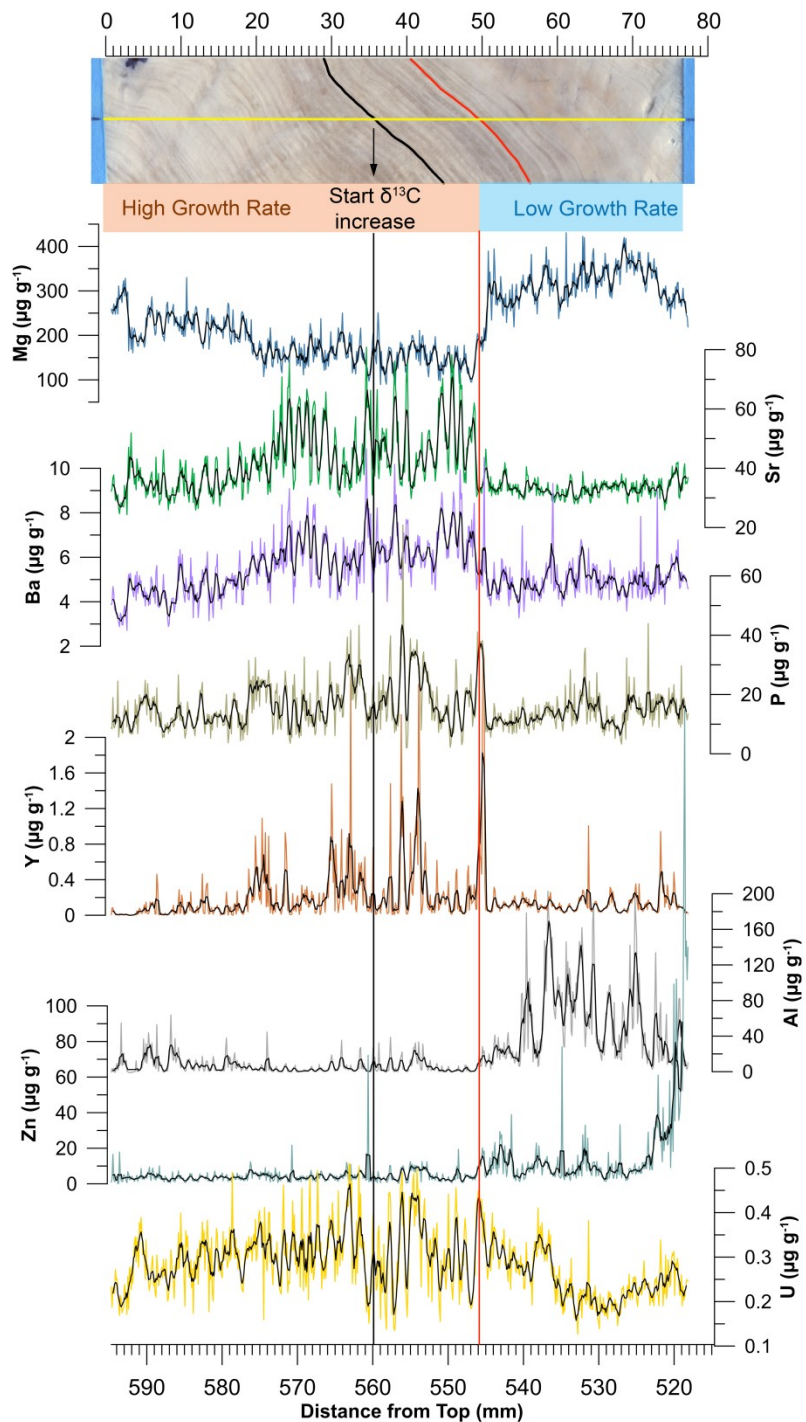


755

756 **Figure 6:** $\delta^{13}\text{C}$ (grey) of RSM-17 over the Eemian-Weichselian transition plotted versus distance
757 from top in mm. Left is the oldest part of the speleothem and right the youngest. The increase of
758 $\delta^{13}\text{C}$ is observed before the morphology of the speleothem starts changing (red line). The insert
759 shows a detail of the annual layering, with the layer counting included.

760

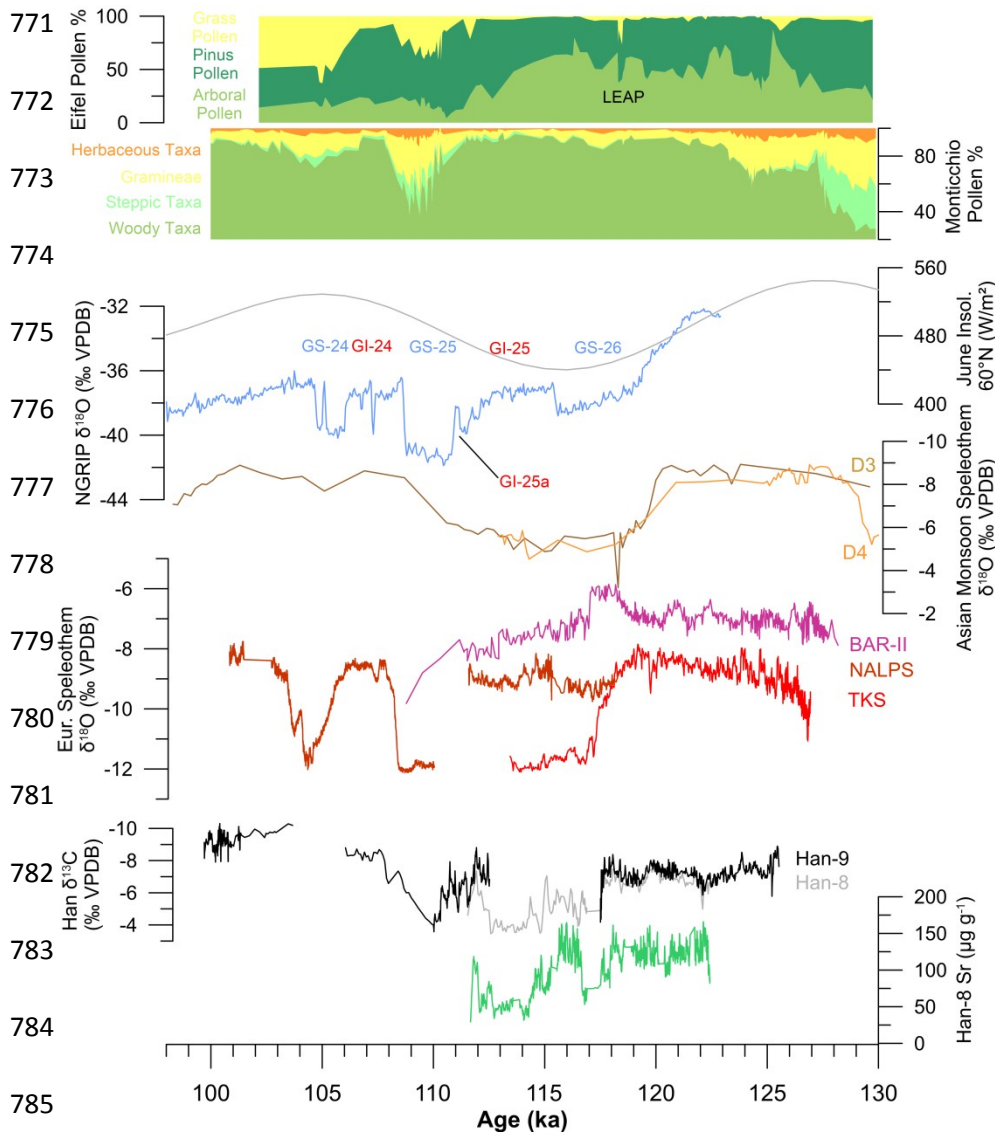
761



762

763Figure 7: LA-ICP-MS trace element concentrations in $\mu\text{g g}^{-1}$ of RSM-17 over the Eemian-
 764Weichselian transition plotted versus distance from top in mm. The image shows a detailed scan of
 765the annual layering around the EWT. Yellow line indicates the location of the trace element
 766measurements. Black line indicates where the $\delta^{13}\text{C}$ starts to increase (Fig. 7) and red line indicates

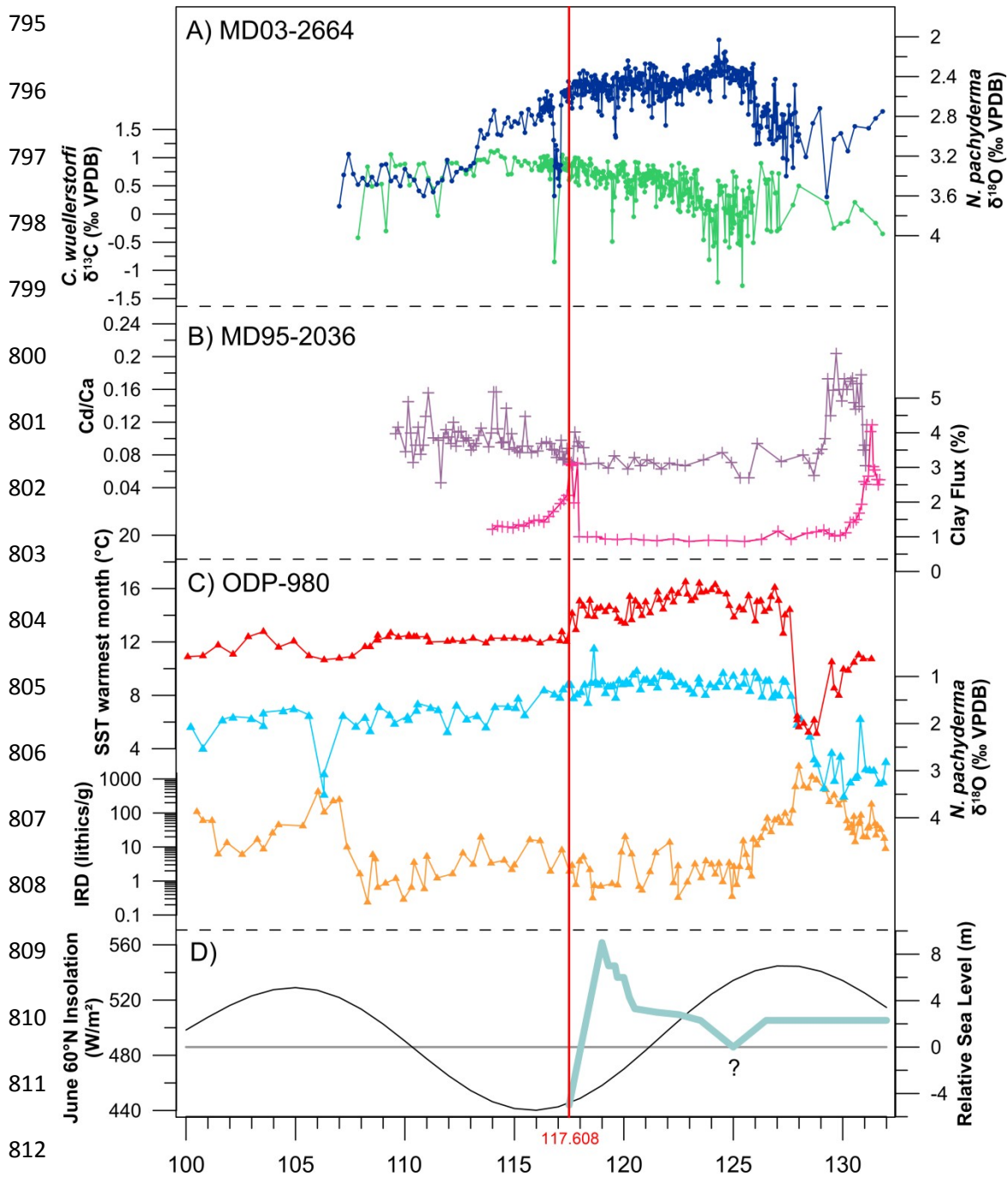
767where the speleothem morphology changes. The change in speleothem morphology, from thick
768layers on the left to very fine laminae on the right, is interpreted to reflect a changing speleothem
769growth rate. Blue: Mg, green: Sr, purple: Ba, brown: P, orange: Y, grey: Al, light blue: Zn and
770yellow: U.



786 **Figure 8: Continental records covering the studied time frame. (A) Eifel grass, pinus and arboreal**
 787 **pollen abundance with the LEAP indicated (Sirocko et al., 2005). (B) Pollen abundances of**
 788 **herbaceous, grass, steppic and woody taxa from Lago Grande di Monticchio (Brauer et al., 2007;**
 789 **Allen and Huntley, 2009). (C) June insolation at 60° N. (D) NGRIP $\delta^{18}\text{O}$ (NGRIP members, 2004)**
 790 **plotted on the GICC05 model ext timescale (Wolff et al., 2010). (E) Asian monsoon intensity**
 791 **represented by Chinese speleothem $\delta^{18}\text{O}$ (Yuan et al., 2004). (F) European speleothem $\delta^{18}\text{O}$. (G)**
 792 **Han-9 $\delta^{13}\text{C}$, Han-8 $\delta^{13}\text{C}$ and Han-8 Sr concentration.**

793

794



813 Figure 9: Marine records mentioned in the text. A) Eirik Drift MD03-2664 *N. pachyderma* $\delta^{18}\text{O}$, *C.*
 814 *wuellerstorfi* $\delta^{13}\text{C}$ (Galaasen et al., 2014). B) Bermuda Rise MD95-2036 Cd/Ca and Clay Flux
 815 (Adkins et al., 1997). C) ODP-980 Sea Surface Temperature of the warmest month, *N. pachyderma*
 816 $\delta^{18}\text{O}$ and IRD content plotted on a logarithmic scale (Oppo et al., 2006). D) June insolation at 60°N
 817 (Berger and Loutre, 1991) and global relative sea level (after Hearty et al., 2007). Red line indicates
 818 the timing of the EWT in the Belgian speleothems.

Table 2: Results of ^{230}Th - ^{234}U dating

#	Distance (mm dft) ¹	^{238}U (ng g ⁻¹)	^{232}Th ppt	$^{230}\text{Th} / ^{232}\text{Th}$ (atomic x10 ⁻⁶)	$\delta^{234}\text{U}$ (measured) ²	$^{230}\text{Th} / ^{238}\text{U}$ (activity)	^{230}Th Age (yr) (uncorrected)	^{230}Th Age (yr) (corrected)	$\delta^{234}\text{U}$ Initial (corrected) ₃	^{230}Th Age (yr BP) (corrected) ⁴
RSM-17										
1	1208	166.7 ±0.2	745 ±15	3286 ±66	290.0 ±1.5	0.8911 ±0.0019	12012 5 ±515	120033 ±519	407 ±2	119970 ±519
2	1205	180.7 ±0.2	891 ±18	2968 ±60	285.9 ±1.6	0.8875 ±0.0014	11999 4 ±436	119891 ±441	401 ±2	119825 ±441
3	979	233.3 ±0.2	789 ±16	4348 ±88	299.8 ±1.2	0.8917 ±0.0013	11853 1 ±360	118462 ±363	419 ±2	118396 ±363
4	929	251 ±0	664 ±13	5473 ±110	285.7 ±1.5	0.8774 ±0.0015	11770 0 ±426	117644 ±428	398 ±2	117578 ±428
5	909	213.5 ±0.3	713 ±14	4399 ±89	296.2 ±1.5	0.8906 ±0.0017	11888 6 ±471	118817 ±473	414 ±2	118754 ±473
6	882	209 ±0	1093 ±22	2813 ±57	302.7 ±1.6	0.8931 ±0.0014	11833 4 ±424	118227 ±430	423 ±2	118161 ±430
7	753	271 ±0	914 ±18	4398 ±88	309.0 ±1.5	0.9003 ±0.0014	11887 1 ±415	118802 ±417	432 ±2	118736 ±417
8	727	290.7 ±0.5	782 ±16	5506 ±111	308.8 ±1.6	0.8988 ±0.0017	11857 0 ±481	118515 ±482	431 ±2	118452 ±482
9	604	287 ±0	1042 ±21	4123 ±83	332.1 ±1.7	0.9086 ±0.0015	11681 8 ±427	116746 ±430	462 ±2	116680 ±430
10	564	502 ±1	3078 ±62	2462 ±49	331.5 ±1.5	0.9156 ±0.0017	11845 7 ±458	118335 ±465	463 ±2	118269 ±465
11	548	214.2 ±0.3	673 ±14	4832 ±97	341.3 ±1.6	0.9211 ±0.0019	11800 1 ±489	117939 ±490	476 ±2	117876 ±490
12	540	258.3 ±0.2	899 ±18	4311 ±87	326.8 ±1.4	0.9104 ±0.0012	11809 4 ±351	118024 ±354	456 ±2	117958 ±354
13	534	420 ±1	732 ±15	8555 ±172	323.7 ±1.5	0.9044 ±0.0017	11728 2 ±444	117247 ±445	451 ±2	117181 ±445
14	321	122.1 ±0.1	1190 ±24	1547 ±31	339.1 ±1.6	0.9145 ±0.0018	11695 5 ±475	116762 ±494	471 ±2	116699 ±494
15	283	144.5 ±0.2	548 ±11	3967 ±80	348.5 ±1.7	0.9130 ±0.0019	11510 2 ±487	115028 ±489	482 ±2	114965 ±489
16	254	147.3 ±0.3	966 ±19	2288 ±46	340.0 ±1.9	0.9098 ±0.0021	11579 2 ±543	115662 ±550	471 ±3	115599 ±550
17	136	156 ±0	1029 ±21	2256 ±45	339.5 ±1.5	0.9002 ±0.0014	11381 2 ±378	113681 ±389	468 ±2	113615 ±389
Han-8										
1	167	268.0 ±0.3	6391 ±12	808 ±16	632.6 ±1.7	1.1681 ±0.0021	12238 4 ±429	122017 ±500	893 ±3	121954 ±500
2	151	293.1 ±0.3	387 ±8	14610 ±294	639.1 ±1.8	1.1705 ±0.0018	12192 2 ±405	121902 ±405	901 ±3	121839 ±405
3	128	289.1 ±0.4	241 ±5	22950 ±463	634.9 ±1.8	1.1601 ±0.0018	12067 1 ±391	120658 ±391	892 ±3	120595 ±391
4	124.5	322.9 ±0.4	212 ±4	29097 ±590	631.0 ±1.7	1.1558 ±0.0018	12044 ±388	120433 ±388	886 ±3	120370 ±388

5	104.5	324.5 ±0.4	152 ±3	40750 ±833	641.0 ±2.0	1.1581 ±0.0020	11951 0 ±431	119503 ±431	898 ±3	119440 ±431
6	83	382.9 ±0.5	296 ±6	24743 ±500	655.7 ±2.0	1.1586 ±0.0020	11768 1 ±419	117669 ±419	914 ±3	117606 ±419
7	81	281.6 ±0.4	557 ±11	9635 ±194	658.6 ±2.0	1.1567 ±0.0021	11699 8 ±430	116967 ±430	916 ±3	116904 ±430
8	70.5	281.9 ±0.3	227 ±5	23785 ±485	668.0 ±1.9	1.1611 ±0.0019	11655 5 ±400	116542 ±400	928 ±3	116479 ±400
9	67	377.7 ±0.4	159 ±3	44978 ±930	652.1 ±1.6	1.1470 ±0.0019	11619 6 ±368	116189 ±368	905 ±2	116126 ±368
10	55.5	354.8 ±0.5	269 ±5	24980 ±509	659.9 ±1.9	1.1490 ±0.0022	11554 9 ±437	115537 ±437	914 ±3	115474 ±437
11	52	261.4 ±0.3	313 ±6	16105 ±327	692.0 ±2.1	1.1695 ±0.0023	11498 1 ±444	114963 ±444	957 ±3	114900 ±444
12	29	149.3 ±0.2	828 ±17	3487 ±70	705.7 ±2.1	1.1733 ±0.0019	11396 7 ±389	113885 ±393	973 ±3	113822 ±393
13	3	179.4 ±0.2	315 ±6	11012 ±223	730.4 ±2.0	1.1741 ±0.0020	11285 100	111260 ±372	0 ±3	111197 ±372
Han-9										
668	531.5 ±0.6	1693 ±34 ±12	6077 ±122	622.5 ±1.5	1.1739 ±0.0016	12485 4 ±363	124805 ±364	885 ±2	124740 ±364	
639	475.3 ±0.4	6419 8	1417 ±29	606 ±3	1.1608 ±0.0027	12478 1 ±653	124569 ±669	862 ±4	124506 ±669	
614.6	227.6 ±0.2	413 ±8	11096 ±223	704.0 ±1.6	1.2220 ±0.0013	12207 5 ±304	122049 ±305	993 ±2	121984 ±305	
581.5	289.7 ±0.2	1597 ±32	3563 ±71	675.2 ±1.5	1.1911 ±0.0014	12062 5 ±304	120542 ±310	949 ±2	120477 ±310	
554	370.5 ±0.3	213 ±4	33652 ±692	661 ±3	1.1759 ±0.0029	11993 4 ±589	119925 ±589	927 ±4	119862 ±589	
484.2	390.1 ±0.4	1420 ±28	5246 ±105	637.7 ±1.6	1.1583 ±0.0015	11997 1 ±331	119915 ±333	895 ±2	119850 ±333	
426	337.7 ±0.3	243 ±5	26740 ±539	656.3 ±1.5	1.1679 ±0.0013	11917 9 ±289	119168 ±289	919 ±2	119103 ±289	
397	373.4 ±0.3	681 ±14	10480 ±211	650 ±2	1.1596 ±0.0027	11856 4 ±539	118536 ±539	908 ±3	118473 ±539	
356	636.0 ±0.7	1406 ±28	8600 ±172	648.9 ±1.5	1.1533 ±0.0014	11766 1 ±306	117627 ±307	904 ±2	117562 ±307	
311	226.6 ±0.3	1735 ±35	2526 ±51	667.0 ±3.2	1.1727 ±0.0036	11859 6 ±727	118481 ±731	932 ±5	118418 ±731	
1	305	319.4 ±0.3	1412 ±28	4254 ±86	630.9 ±1.7	1.1409 ±0.0018	11788 1 ±376	117812 ±379	880 ±3	117746 ±379
297	396.8 ±0.4	563 ±11	13324 ±269	676.9 ±2.4	1.1456 ±0.0027	11296 4 ±512	112942 ±512	931 ±4	112879 ±512	
271	213.5 ±0.1	1647 ±33	2460 ±49	692.3 ±1.4	1.1511 ±0.0011	11204 5 ±237	111930 ±251	949 ±2	111865 ±251	
238.5	239.0 ±0.2	208 ±4	21967 ±446	709.8 ±1.6	1.1594 ±0.0012	111337 10857	111324 ±254	972 ±2	111259 ±254	
2	224*	313.4 ±0.4	918 ±19	6320 ±128	685.0 ±1.7	1.1234 ±0.0019	2 ±343	108527 ±344	930 ±3	108461 ±344

3	214	216.2 ±0.3	939 ±19	4315 ±87	691.4 ±3.0	1.1365 ±0.0035	10988	7 ±637	109822 ±638	943 ±4	109759 ±638
	201	158.8 ±0.1	386 ±8	7695 ±155	680.1 ±1.5	1.1334 ±0.0012	11066	3 ±245	110627 ±246	929 ±2	110562 ±246
	189	156.3 ±0.1	7024 ±14	415 ±8	698.7 ±1.7	1.1315 ±0.0021	10830	4 ±363	107631 ±598	947 ±3	107565 ±598
	179.5	179.8 ±0.1	3158 ±63	1064 ±21	711.7 ±1.5	1.1341 ±0.0011	10730	3 ±223	107042 ±289	963 ±2	106977 ±289
4	171	187.0 ±0.2	1051 ±21	3255 ±66	711.7 ±4.1	1.1089 ±0.0037	10361	5 ±671	103531 ±673	953 ±6	103468 ±673
	154*	204.3 ±0.2	2749 ±55	1339 ±27	727.0 ±1.5	1.0929 ±0.0011	99868	±215	99668 ±257	963 ±2	99603 ±257
	145	187.7 ±0.2	2284 ±46	1480 ±30	713.5 ±1.8	1.0927 ±0.0016	10113	5 ±282	100953 ±309	949 ±2	100887 ±309
	125.7*	159.7 ±0.1	1709 ±34	1673 ±34	744.0 ±1.6	1.0861 ±0.0011	97373	±206	97215 ±234	979 ±2	97150 ±234
	98.7	149.3 ±0.2	759 ±15	3593 ±73	737.3 ±4.0	1.1070 ±0.0039	10084	7 ±664	100772 ±666	980 ±6	100709 ±666
	56*	196.9 ±0.1	978 ±20	3503 ±70	694.6 ±1.5	1.0554 ±0.0011	97680	±206	97604 ±212	915 ±2	97539 ±212
	34*	234.0 ±0.2	359 ±7	11228 ±226	668.5 ±1.6	1.0444 ±0.0013	98598	±236	98574 ±237	883 ±2	98509 ±237
5	15.2	240.4 ±0.2	531 ±11	7898 ±161	676.6 ±3.1	1.0581 ±0.0039	99784	±634	99750 ±634	897 ±4	99687 ±634
	8.5	248.3 ±0.2	490 ±10	8890 ±180	684.8 ±1.6	1.0647 ±0.0016	99925	±275	99894 ±276	908 ±2	99828 ±276

All errors shown are 2σ uncertainties

U decay constants used: $\lambda_{238} = 1.55125 \times 10^{-10}$ (Jaffey et al., 1971) and $\lambda_{234} = 2.82206 \times 10^{-6}$ (Cheng et al., 2013). Th decay constant used: $\lambda_{230} = 9.1705 \times 10^{-6}$ (Cheng et al., 2013).

Th decay constant used: $\lambda_{230} = 9.1705 \times 10^{-6}$ (Cheng et al., 2013).

¹ dft = distance from top

² $\delta^{234}\text{U} = ([^{234}\text{U}/^{238}\text{U}]_{\text{activity}} - 1) \times 1000$.

³ $\delta^{234}\text{U}_{\text{initial}}$ was calculated based on ²³⁰Th age (T), i.e., $\delta^{234}\text{U}_{\text{initial}} = \delta^{234}\text{U}_{\text{measured}} \times e^{\lambda_{234} \times T}$.

⁴ Corrected ²³⁰Th ages assume the initial ²³⁰Th/²³²Th atomic ratio of $4.4 \pm 2.2 \times 10^{-6}$. Those are the values for a material at secular equilibrium, with the bulk earth ²³²Th/²³⁸U value of 3.8.

The errors are arbitrarily assumed to be 50%. B.P. stands for “Before Present” where the “Present” is defined as the year 1950 A.D.

Dashed lines indicate discontinuities in speleothem growth

* Han-9 dates collected in 2015 (see Vansteenberge et al., 2016)

Bold indicates Newly added dates of Han-9

819

820

821

822

823

824

825

826

827

828

829Table 2: Information about the different tie-points used in Fig. 4

Tie point	Han-8 dft (mm)	Han-8 Age (ka)	Han-8 Error range (ka)		Han-9 dft (mm)	Han-9 Age (ka)	Han-9 Error range (ka)		Age Difference Han-8/Han-9 (ka)	Tuned Age (ka)	Tuned Age Error (ka)
1	170	122.284	122.764	121.860	611	121.920	122.228	121.576	0.364	122.102	±0.389
2	122	120.280	120.580	120.012	466	119.519	119.885	119.260	0.761	119.900	±0.298
3	105	119.294	119.812	118.970	438	119.208	119.537	118.979	0.086	119.251	±0.35
4	93	118.487	119.338	118.157	389.5	118.399	118.943	117.992	0.088	118.443	±0.533
5	88.75	118.157	118.829	117.843	371.5	117.969	118.715	117.639	0.188	118.063	±0.515
6	81.5	117.675	118.088	117.304	304.5	117.339	117.739	116.536	0.336	117.507	±0.497
7	4	111.613	112.113	111.110	282	112.255	112.580	111.924	-0.642	111.934	±0.415
8	1	111.392	111.914	110.860	260	111.693	111.874	111.480	-0.301	111.543	±0.362

830

832References

- 833Adkins, J.F., Boyle, E.A., Keigwin, L. and Cortijo, E. (1997) Variability of the North Atlantic thermohaline
834circulation during the last interglacial period. *Nature*, **390**, 154-156.
- 835Allan, M., Fagel, N., Van Rampelbergh, M., Baldini, J., Riotte, J., Cheng, H., Edwards, R.L., Gillikin, D.,
836Quinif, Y. and Verheyden, S. (2015) Lead concentrations and isotope ratios in speleothems as proxies for
837atmospheric metal pollution since the industrial revolution. *Chemical Geology*, **401**, 140-150.
- 838Allen, J.R.M. and Huntley, B. (2009) Last Interglacial palaeovegetation, palaeoenvironments and
839chronology: a new record from Lago Grande di Monticchio, southern Italy. *Quaternary Science Reviews*,
840**28**, 1521-1538.
- 841Bar-Matthews, M., Ayalon, A., Gilmour, M., Matthews, A. and Hawkesworth, C.J. (2003) Sea-land
842oxygen isotopic relationships from planktonic foraminifera and speleothems in the Eastern
843Mediterranean region and their implication for paleorainfall during interglacial intervals. *Geochimica et*
844*Cosmochimica Acta*, **67**, 3181-3199.
- 845Bauch, H.A., Kandiano, E.S., Helmke, J., Andersen, N., Rosell-Mele, A. and Erlenkeuser, H. (2011)
846Climatic bisection of the last interglacial warm period in the Polar North Atlantic. *Quaternary Science*
847*Reviews*, **30**, 1813-1818.
- 848Bazin, L., Landais, A., Lemieux-Dudon, B., Kele, H.T.M., Veres, D., Parrenin, F., Martinerie, P., Ritz, C.,
849Capron, E., Lipenkov, V., Loutre, M.F., Raynaud, D., Vinther, B., Svensson, A., Rasmussen, S.O., Severi,
850M., Blunier, T., Leuenberger, M., Fischer, H., Masson-Delmotte, V., Chappellaz, J. and Wolff, E. (2013) An
851optimized multi-proxy, multi-site Antarctic ice and gas orbital chronology (AICC2012): 120-800 ka.
852*Climate of the Past*, **9**, 1715-1731.
- 853Berger, A., Crucifix, M., Hodell, D.A., Mangili, C., McManus, J.F., Otto-Bliesner, B., Pol, K., Raynaud, D.,
854Skinner, L.C., Tzedakis, P.C., Wolff, E.W., Yin, Q.Z., Abe-Ouchi, A., Barbante, C., Brovkin, V., Cacho, I.,
855Capron, E., Ferretti, P., Ganopolski, A., Grimalt, J.O., Honisch, B., Kawamura, K., Landais, A., Margari,
856V., Martrat, B., Masson-Delmotte, V., Mokeddem, Z., Parrenin, F., Prokopenko, A.A., Rashid, H., Schulz,
857M., Riveiros, N.V. and Past Interglacials Working Grp, P.A.G. (2016) Interglacials of the last
858800,000years. *Reviews of Geophysics*, **54**, 162-219.
- 859Berger, A. and Loutre, M.F. (1991) INSOLATION VALUES FOR THE CLIMATE OF THE LAST 1000000 YEARS.
860*Quaternary Science Reviews*, **10**, 297-317.
- 861Blanchon, P., Eisenhauer, A., Fietzke, J. and Liebetrau, V. (2009) Rapid sea-level rise and reef back-
862stepping at the close of the last interglacial highstand. *Nature*, **458**, 881-U6.
- 863Boch, R., Cheng, H., Spotl, C., Edwards, R.L., Wang, X. and Hauselmann, P. (2011) NALPS: a precisely
864dated European climate record 120-60 ka. *Climate of the Past*, **7**, 1247-1259.
- 865Bonniver, I. (2010) Hydrogéologie du Massif de Boine. In: *EcoKarst*, **81**, pp. 1-4, La Hulpe.
- 866Borsato, A., Frisia, S., Fairchild, I.J., Somogyi, A. and Susini, J. (2007) Trace element distribution in
867annual stalagmite laminae mapped by micrometer-resolution X-ray fluorescence: Implications for
868incorporation of environmentally significant species. *Geochimica Et Cosmochimica Acta*, **71**, 1494-1512.
- 869Bourdin, C., Douville, E. and Genty, D. (2011) Alkaline-earth metal and rare-earth element incorporation
870control by ionic radius and growth rate on a stalagmite from the Chauvet Cave, Southeastern France.
871*Chemical Geology*, **290**, 1-11.
- 872Brauer, A., Allen, J.R.M., Mingram, J., Dulski, P., Wulf, S. and Huntley, B. (2007) Evidence for last
873interglacial chronology and environmental change from Southern Europe. *Proceedings of the National*
874*Academy of Sciences of the United States of America*, **104**, 450-455.
- 875Breitenbach, S.F.M., Rehfeld, K., Goswami, B., Baldini, J.U.L., Ridley, H.E., Kennett, D.J., Prufer, K.M.,
876Aquino, V.V., Asmerom, Y., Polyak, V.J., Cheng, H., Kurths, J. and Marwan, N. (2012) COConstructing Proxy
877Records from Age models (COPRA). *Climate of the Past*, **8**, 1765-1779.

878Brewer, S., Guiot, J., Sanchez-Goni, M.F. and Klotz, S. (2008) The climate in Europe during the Eemian: a
879multi-method approach using pollen data. *Quaternary Science Reviews*, **27**, 2303-2315.

880Capron, E., Govin, A., Stone, E.J., Masson-Delmotte, V., Mulitza, S., Otto-Bliesner, B., Rasmussen, T.L.,
881Sime, L.C., Waelbroeck, C. and Wolff, E.W. (2014) Temporal and spatial structure of multi-millennial
882temperature changes at high latitudes during the Last Interglacial. *Quaternary Science Reviews*, **103**, 116-
883133.

884Capron, E., Landais, A., Chappellaz, J., Buiron, D., Fischer, H., Johnsen, S.J., Jouzel, J., Leuenberger, M.,
885Masson-Delmotte, V. and Stocker, T.F. (2012) A global picture of the first abrupt climatic event occurring
886during the last glacial inception. *Geophysical Research Letters*, **39**.

887Capron, E., Landais, A., Chappellaz, J., Schilt, A., Buiron, D., Dahl-Jensen, D., Johnsen, S.J., Jouzel, J.,
888Lemieux-Dudon, B., Loulergue, L., Leuenberger, M., Masson-Delmotte, V., Meyer, H., Oerter, H. and
889Stenni, B. (2010) Millennial and sub-millennial scale climatic variations recorded in polar ice cores over
890the last glacial period. *Climate of the Past*, **6**, 345-365.

891Chapman, M.R. and Shackleton, N.J. (1999) Global ice-volume fluctuations, North Atlantic ice-rafting
892events, and deep-ocean circulation changes between 130 and 70 ka. *Geology*, **27**, 795-798.

893Cheng, H., Edwards, R.L., Chuan-Chou, S., Polyak, V.J., Asmerom, Y., Woodhead, J., Hellstrom, J.,
894Yongjin, W., Xingong, K., Spotl, C., Xianfeng, W. and Alexander, E.C., Jr. (2013) Improvements in 230Th
895dating, 230Th and 234U half-life values, and U-Th isotopic measurements by multi-collector inductively
896coupled plasma mass spectrometry. *Earth and Planetary Science Letters*, **371-372**, 82-91.

897Coen, M. (1970) Stratigraphie du Frasnien de la Grotte de Remouchamps. *Annales de la Société
898Géologique de Belgique*, **93**, 73-79.

899Couchoud, I., Genty, D., Hoffmann, D., Drysdale, R. and Blamart, D. (2009) Millennial-scale climate
900variability during the Last Interglacial recorded in a speleothem from south-western France. *Quaternary
901Science Reviews*, **28**, 3263-3274.

902Dahl-Jensen, D., Albert, M.R., Aldahan, A., Azuma, N., Balslev-Clausen, D., Baumgartner, M., Berggren,
903A.M., Bigler, M., Binder, T., Blunier, T., Bourgeois, J.C., Brook, E.J., Buchardt, S.L., Buizert, C., Capron, E.,
904Chappellaz, J., Chung, J., Clausen, H.B., Cvijanovic, I., Davies, S.M., Ditlevsen, P., Eicher, O., Fischer, H.,
905Fisher, D.A., Fleet, L.G., Gfeller, G., Gkinis, V., Gogineni, S., Goto-Azuma, K., Grinsted, A.,
906Gudlaugsdottir, H., Guillevic, M., Hansen, S.B., Hansson, M., Hirabayashi, M., Hong, S., Hur, S.D.,
907Huybrechts, P., Hvidberg, C.S., Iizuka, Y., Jenk, T., Johnsen, S.J., Jones, T.R., Jouzel, J., Karlsson, N.B.,
908Kawamura, K., Keegan, K., Kettner, E., Kipfstuhl, S., Kjaer, H.A., Koutnik, M., Kuramoto, T., Kohler, P.,
909Laepfle, T., Landais, A., Langen, P.L., Larsen, L.B., Leuenberger, D., Leuenberger, M., Leuschen, C., Li, J.,
910Lipenkov, V., Martinerie, P., Maselli, O.J., Masson-Delmotte, V., McConnell, J.R., Miller, H., Mini, O.,
911Miyamoto, A., Montagnat-Rentier, M., Mulvaney, R., Muscheler, R., Orsi, A.J., Paden, J., Panton, C.,
912Pattyn, F., Petit, J.R., Pol, K., Popp, T., Possnert, G., Prie, F., Prokopiou, M., Quiquet, A., Rasmussen,
913S.O., Raynaud, D., Ren, J., Reutenauer, C., Ritz, C., Rockmann, T., Rosen, J.L., Rubino, M., Rybak, O.,
914Samyn, D., Sapart, C.J., Schilt, A., Schmidt, A.M.Z., Schwander, J., Schupbach, S., Seierstad, I.,
915Severinghaus, J.P., Sheldon, S., Simonsen, S.B., Sjolte, J., Solgaard, A.M., Sowers, T., Sperlich, P., Steen-
916Larsen, H.C., Steffen, K., Steffensen, J.P., Steinhage, D., Stocker, T.F., Stowasser, C., Sturevik, A.S.,
917Sturges, W.T., Sveinbjornsdottir, A., Svensson, A., Tison, J.L., Uetake, J., Vallelonga, P., van de Wal,
918R.S.W., van der Wel, G., Vaughn, B.H., Vinther, B., Waddington, E., Wegner, A., Weikusat, I., White,
919J.W.C., Wilhelms, F., Winstrup, M., Witrant, E., Wolff, E.W., Xiao, C., Zheng, J. and Community, N. (2013)
920Eemian interglacial reconstructed from a Greenland folded ice core. *Nature*, **493**, 489-494.

921Day, C.C. and Henderson, G.M. (2013) Controls on trace-element partitioning in cave-analogue calcite.
922*Geochimica Et Cosmochimica Acta*, **120**, 612-627.

923Demeny, A., Kern, Z., Czippon, G., Nemeth, A., Leel-Ossy, S., Siklosy, Z., Lin, K., Hu, H.M., Shen, C.C.,
924Vennemann, T.W. and Haszpra, L. (2017) Stable isotope compositions of speleothems from the last
925interglacial - Spatial patterns of climate fluctuations in Europe. *Quaternary Science Reviews*, **161**, 68-80.

926Dorale, J.A. and Liu, Z.H. (2009) LIMITATIONS OF HENDY TEST CRITERIA IN JUDGING THE PALEOCLIMATIC
927SUITABILITY OF SPELEOTHEMS AND THE NEED FOR REPLICATION. *Journal of Cave and Karst Studies*, **71**,
92873-80.

929Drysedale, R.N., Hellstrom, J.C., Zanchetta, G., Fallick, A.E., Sánchez Goñi, M.F., Couchoud, I., McDonald,
930J., Maas, R., Lohmann, G. and Isola, I. (2009) Evidence for Obliquity Forcing of Glacial Termination II.
931*Science*, **325**, 1527-1531.

932Drysedale, R.N., Zanchetta, G., Hellstrom, J.C., Fallick, A.E., McDonald, J. and Cartwright, I. (2007)
933Stalagmite evidence for the precise timing of North Atlantic cold events during the early last glacial.
934*Geology*, **35**, 77-80.

935Drysedale, R.N., Zanchetta, G., Hellstrom, J.C., Fallick, A.E. and Zhao, J.X. (2005) Stalagmite evidence for
936the onset of the Last Interglacial in southern Europe at 129 +/- 1 ka. *Geophysical Research Letters*, **32**.
937Dutton, A., Carlson, A.E., Long, A.J., Milne, G.A., Clark, P.U., DeConto, R., Horton, B.P., Rahmstorf, S.
938and Raymo, M.E. (2015) Sea-level rise due to polar ice-sheet mass loss during past warm periods.
939*Science*, **349**.

940Dutton, A. and Lambeck, K. (2012) Ice Volume and Sea Level During the Last Interglacial. *Science*, **337**,
941216-219.

942Edwards, R.L., Chen, J.H., Ku, T.L. and Wasserburg, G.J. (1987) Precise Timing of the Last Interglacial
943Period from Mass Spectrometric Determination of Thorium-230 in Corals. *Science*, **236**, 1547-1553.

944Ek, C. (1970) Carte Géologique de la Grotte de Remouchamps (Belgique). *Annales de la Société*
945*Géologique de Belgique*, **93**, 287-292.

946Fairchild, I.J. and Baker, A. (2012) *Speleothem Science: from process to past environments*. Wiley-
947Blackwell.

948Fairchild, I.J., Baker, A., Borsato, A., Frisia, S., Hinton, R.W., McDermott, F. and Tooth, A.F. (2001)
949Annual to sub-annual resolution of multiple trace-element trends in speleothems. *Journal of the*
950*Geological Society*, **158**, 831-841.

951Fairchild, I.J., Borsato, A., Tooth, A.F., Frisia, S., Hawkesworth, C.J., Huang, Y.M., McDermott, F. and
952Spiro, B. (2000) Controls on trace element (Sr-Mg) compositions of carbonate cave waters: implications
953for speleothem climatic records. *Chemical Geology*, **166**, 255-269.

954Fairchild, I.J. and Treble, P.C. (2009) Trace elements in speleothems as recorders of environmental
955change. *Quaternary Science Reviews*, **28**, 449-468.

956Friedman, I., O'Neil, J. and Cebula, G. (1982) Two New Carbonate Stable-Isotope Standards.
957*Geostandards Newsletter*, **6**, 11-12.

958Frisia, S., Borsato, A., Drysdale, R.N., Paul, B., Greig, A. and Cotte, M. (2012) A re-evaluation of the
959palaeoclimatic significance of phosphorus variability in speleothems revealed by high-resolution
960synchrotron micro XRF mapping. *Climate of the Past*, **8**, 2039-2051.

961Fronval, T., Jansen, E., Hafliðason, H. and Sejrup, H.P. (1998) Variability in surface and deep water
962conditions in the Nordic Seas during the last interglacial period. *Quaternary Science Reviews*, **17**, 963-
963985.

964Galaasen, E.V., Ninnemann, U.S., Irvani, N., Kleiven, H.F., Rosenthal, Y., Kissel, C. and Hodell, D.A. (2014)
965Rapid Reductions in North Atlantic Deep Water During the Peak of the Last Interglacial Period. *Science*,
966**343**, 1129-1132.

967Genty, D. and Deflandre, G. (1998) Drip flow variations under a stalactite of the Pere Noel cave
968(Belgium). Evidence of seasonal variations and air pressure constraints. *Journal of Hydrology*, **211**, 208-
969232.

970Genty, D., Verheyden, S. and Wainer, K. (2013) Speleothem records over the Last Interglacial, **21**, pp. 24-
97125. PAGES.

972Gewelt, M. (1985) Cinétique du concrétionnement dans quelques grottes Belges: apport des datations ¹⁴C
973et ²³⁰Th/²³⁴U. *Annales de la Société Géologique de Belgique*, **108**, 267-273.

974 Govin, A., Capron, E., Tzedakis, P.C., Verheyden, S., Ghaleb, B., Hillaire-Marcel, C., St-Onge, G., Stoner,
975 J.S., Bassinot, F., Bazin, L., Blunier, T., Combourieu-Nebout, N., El Ouahabi, A., Genty, D., Gersonde, R.,
976 Jimenez-Amat, P., Landais, A., Martrat, B., Masson-Delmotte, V., Parrenin, F., Seidenkrantz, M.S.,
977 Veres, D., Waelbroeck, C. and Zahn, R. (2015) Sequence of events from the onset to the demise of the
978 Last Interglacial: Evaluating strengths and limitations of chronologies used in climatic archives.
979 *Quaternary Science Reviews*, **129**, 1-36.

980 Granoszewski, W. (2003) Late Pleistocene vegetation history and climatic changes at Horszki Duze,
981 eastern Poland: a palaeobotanical study. *Acta Palaeobotanica*, **4**, 3-95.

982 Hai, C., Edwards, R.L., Chuan-Chou, S., Polyak, V.J., Asmerom, Y., Woodhead, J., Hellstrom, J., Yongjin,
983 W., Xinggong, K., Spotl, C., Xianfeng, W. and Alexander, E.C., Jr. (2013) Improvements in ²³⁰Th dating,
984 ²³⁰Th and ²³⁴U half-life values, and U-Th isotopic measurements by multi-collector inductively coupled
985 plasma mass spectrometry. *Earth and Planetary Science Letters*, **371-372**, 82-91.

986 Hartland, A., Fairchild, I.J., Lead, J.R., Borsato, A., Baker, A., Frisia, S. and Baalousha, M. (2012) From
987 soil to cave: Transport of trace metals by natural organic matter in karst dripwaters. *Chemical Geology*,
988 **304**, 68-82.

989 Hearty, P.J., Hollin, J.T., Neumann, A.C., O'Leary, M.J. and McCulloch, M. (2007) Global sea-level
990 fluctuations during the Last Interglaciation (MIS 5e). *Quaternary Science Reviews*, **26**, 2090-2112.

991 Helmens, K.F. (2014) The Last Interglacial Glacial cycle (MIS 5-2) re-examined based on long proxy
992 records from central and northern Europe. *Quaternary Science Reviews*, **86**, 115-143.

993 Hendy, C.H. (1971) Isotopic geochemistry of speleothems: calculation of effects of different modes of
994 formation on isotopic composition of speleothems and their applicability as paleoclimatic indicators.
995 *Geochimica Et Cosmochimica Acta*, **35**, 801-&.

996 Hodell, D.A., Minth, E.K., Curtis, J.H., McCave, I.N., Hall, I.R., Channell, J.E.T. and Xuan, C. (2009)
997 Surface and deep-water hydrography on Gardar Drift (Iceland Basin) during the last interglacial period.
998 *Earth and Planetary Science Letters*, **288**, 10-19.

999 Huang, H.M., Fairchild, I.J., Borsato, A., Frisia, S., Cassidy, N.J., McDermott, F. and Hawkesworth, C.J.
1000 (2001) Seasonal variations in Sr, Mg and P in modern speleothems (Grotta di Ernesto, Italy). *Chemical*
1001 *Geology*, **175**, 429-448.

1002 Irvali, N., Ninnemann, U.S., Galaasen, E.V., Rosenthal, Y., Kroon, D., Oppo, D.W., Kleiven, H.F., Darling,
1003 K.F. and Kissel, C. (2012) Rapid switches in subpolar North Atlantic hydrography and climate during the
1004 Last Interglacial (MIS 5e). *Paleoceanography*, **27**, 16.

1005 Irvali, N., Ninnemann, U.S., Kleiven, H.F., Galaasen, E.V., Morley, A. and Rosenthal, Y. (2016) Evidence
1006 for regional cooling, frontal advances, and East Greenland Ice Sheet changes during the demise of the
1007 last interglacial. *Quaternary Science Reviews*, **150**, 184-199.

1008 Jouzel, J., Masson-Delmotte, V., Cattani, O., Dreyfus, G., Falourd, S., Hoffmann, G., Minster, B., Nouet,
1009 J., Barnola, J.M., Chappellaz, J., Fischer, H., Gallet, J.C., Johnsen, S., Leuenberger, M., Loulergue, L.,
1010 Luethi, D., Oerter, H., Parrenin, F., Raisbeck, G., Raynaud, D., Schilt, A., Schwander, J., Selmo, E.,
1011 Souchez, R., Spahni, R., Stauffer, B., Steffensen, J.P., Stenni, B., Stocker, T.F., Tison, J.L., Werner, M. and
1012 Wolff, E.W. (2007) Orbital and millennial Antarctic climate variability over the past 800,000 years.
1013 *Science*, **317**, 793-796.

1014 Kukla, G., McManus, J.F., Rousseau, D.D. and Chuine, I. (1997) How long and how stable was the last
1015 interglacial? *Quaternary Science Reviews*, **16**, 605-612.

1016 Kukla, G.J., Bender, M.L., de Beaulieu, J.L., Bond, G., Broecker, W.S., Cleveringa, P., Gavin, J.E., Herbert,
1017 T.D., Imbrie, J., Jouzel, J., Keigwin, L.D., Knudsen, K.L., McManus, J.F., Merkt, J., Muhs, D.R., Muller, H.,
1018 Poore, R.Z., Porter, S.C., Seret, G., Shackleton, N.J., Turner, C., Tzedakis, P.C. and Winograd, I.J. (2002)
1019 Last interglacial climates. *Quaternary Research*, **58**, 2-13.

1020Lazareth, C.E., Putten, E.V., André, L. and Dehairs, F. (2003) High-resolution trace element profiles in
1021shells of the mangrove bivalve *Isognomon ehippium*: a record of environmental spatio-temporal
1022variations? *Estuarine, Coastal and Shelf Science*, **57**, 1103-1114.

1023Lehman, S.J., Sachs, J.P., Croftwell, A.M., Keigwin, L.D. and Boyle, E.A. (2002) Relation of subtropical
1024Atlantic temperature, high-latitude ice rafting, deep water formation, and European climate 130,000-
102560,000 years ago. *Quaternary Science Reviews*, **21**, 1917-1924.

1026Lorens, R.B. (1981) Sr, Cd, Mn and Co distribution coefficients in calcite as a function of calcite
1027precipitation rate. *Geochimica et Cosmochimica Acta*, **45**, 553-561.

1028Loutre, M.F., Fichet, T., Goussé, H., Huybrechts, P., Goelzer, H. and Capron, E. (2014) Factors
1029controlling the last interglacial climate as simulated by LOVECLIM1.3. *Clim. Past*, **10**, 1541-1565.

1030Masson-Delmotte, V., Schulz, M., Abe-Ouchi, A., Beer, J., Ganopolski, A., González Rouco, J.F., Jansen,
1031E., Lambeck, K., Luterbacher, J., Naish, T., Osborn, T., Otto-Bliesner, B., Quinn, T., Ramesh, R., Rojas, M.,
1032Shao, X. and Timmermann, A. (2013) Information from Paleoclimate Archives. In: *Climate Change 2013:*
1033*The Physical Science Basis. Contribution*

1034*of Working Group I to the Fifth Assessment Report of the Intergovernmental Panel on Climate Change*
1035(Eds Stocker, T.F., D. Qin, G.-K. Plattner, M. Tignor, S.K. Allen, J. Boschung, A. Nauels, Y. Xia, V. Bex and P.M.
1036Midgley). Cambridge University Press, Cambridge, United Kingdom and New York, NY, USA.

1037Meyer, M.C., Spötl, C. and Mangini, A. (2008) The demise of the Last Interglacial recorded in isotopically
1038dated speleothems from the Alps. *Quaternary Science Reviews*, **27**, 476-496.

1039Moseley, G.E., Smart, P.L., Richards, D.A. and Hoffmann, D.L. (2013) Speleothem constraints on marine
1040isotope stage (MIS) 5 relative sea levels, Yucatan Peninsula, Mexico. *Journal of Quaternary Science*, **28**,
1041293-300.

1042Moseley, G.E., Spötl, C., Cheng, H., Boch, R., Min, A. and Edwards, R.L. (2015) Termination-II
1043interstadial/stadial climate change recorded in two stalagmites from the north European Alps.
1044*Quaternary Science Reviews*, **127**, 229-239.

1045Müller, U.C., Sánchez Goñi, M.F., Sirocko, F., Claussen, M., Sánchez Goñi, M.F. and Litt, T. (2007) 19.
1046Vegetation dynamics in southern Germany during marine isotope stage 5 (~ 130 to 70 kyr ago). In:
1047*Developments in Quaternary Sciences*, **7**, pp. 277-287. Elsevier.

1048Nehme, C., Verheyden, S., Noble, S.R., Farrant, A.R., Sahy, D., Hellstrom, J., Delannoy, J.J. and Claeys, P.
1049(2015) Reconstruction of MIS 5 climate in the central Levant using a stalagmite from Kanaan Cave,
1050Lebanon. *Climate of the Past*, **11**, 1785-1799.

1051NGRIP members (2004) High-resolution record of Northern Hemisphere climate extending into the last
1052interglacial period. *Nature*, **431**, 147-151.

1053O'Leary, M.J., Hearty, P.J., Thompson, W.G., Raymo, M.E., Mitrovica, J.X. and Webster, J.M. (2013) Ice
1054sheet collapse following a prolonged period of stable sea level during the last interglacial. *Nature*
1055*Geoscience*, **6**, 796-800.

1056Oppo, D.W., McManus, J.F. and Cullen, J.L. (2006) Evolution and demise of the Last Interglacial warmth
1057in the subpolar North Atlantic. *Quaternary Science Reviews*, **25**, 3268-3277.

1058Otto-Bliesner, B.L., Rosenbloom, N., Stone, E.J., McKay, N.P., Lunt, D.J., Brady, E.C. and Overpeck, J.T.
1059(2013) How warm was the last interglacial? New model-data comparisons. *Philosophical Transactions of*
1060*the Royal Society a-Mathematical Physical and Engineering Sciences*, **371**.

1061Otvos, E.G. (2015) The Last Interglacial Stage: Definitions and marine highstand, North America and
1062Eurasia. *Quaternary International*, **383**, 158-173.

1063Peel, M.C., Finlayson, B.L. and McMahon, T.A. (2007) Updated world map of the Koppen-Geiger climate
1064classification. *Hydrology and Earth System Sciences*, **11**, 1633-1644.

1065Pingitore, N.E. and Eastman, M.P. (1986) THE COPRECIPITATION OF SR-2+ WITH CALCITE AT 25-
1066DEGREES-C AND 1-ATM. *Geochimica Et Cosmochimica Acta*, **50**, 2195-2203.

1067Pol, K., Masson-Delmotte, V., Cattani, O., Debret, M., Falourd, S., Jouzel, J., Landais, A., Minster, B.,
1068Mudelsee, M., Schulz, M. and Stenni, B. (2014) Climate variability features of the last interglacial in the
1069East Antarctic EPICA Dome C ice core. *Geophysical Research Letters*, **41**, 4004-4012.

1070Quinif, Y. (2006) Complex stratigraphic sequences in Belgian caves: correlation with climate changes
1071during the Middle, the Upper Pleistocene and the Holocene. *Geologica Belgica*, **9**, 231-244.

1072Quinif, Y. and Bastin, B. (1994) Dation Uranium/Thorium et Analyse Pollinique d'une Séquence
1073Stalagmitique du Stade 5 (Galerie des Verviétos, Grotte de Han-sur-Lesse, Belgique). *Comptes Rendus de*
1074*l'Académie des Sciences*, **318**, 211-217.

1075R Core Team (2013) R: a language and environment for statistical computing. R Foundation for Statistical
1076Computing, Vienna, Austria.

1077Rasmussen, S.O., Bigler, M., Blockley, S.P., Blunier, T., Buchardt, S.L., Clausen, H.B., Cvijanovic, I., Dahl-
1078Jensen, D., Johnsen, S.J., Fischer, H., Gkinis, V., Guillevic, M., Hoek, W.Z., Lowe, J.J., Pedro, J.B., Popp,
1079T., Seierstad, I.K., Steffensen, J.P., Svensson, A.M., Vallelonga, P., Vinther, B.M., Walker, M.J.C.,
1080Wheatley, J.J. and Winstrup, M. (2014) A stratigraphic framework for abrupt climatic changes during the
1081Last Glacial period based on three synchronized Greenland ice-core records: refining and extending the
1082INTIMATE event stratigraphy. *Quaternary Science Reviews*, **106**, 14-28.

1083Regattieri, E., Zanchetta, G., Drysdale, R.N., Isola, I., Woodhead, J.D., Hellstrom, J.C., Giaccio, B., Greig,
1084A., Baneschi, I. and Dotsika, E. (2016) Environmental variability between the penultimate deglaciation
1085and the mid Eemian: Insights from Tana che Urla (central Italy) speleothem trace element record.
1086*Quaternary Science Reviews*, **152**, 80-92.

1087Roberts, M.S., Smart, P.L. and Baker, A. (1998) Annual trace element variations in a Holocene
1088speleothem. *Earth and Planetary Science Letters*, **154**, 237-246.

1089Scholz, D. and Hoffmann, D.L. (2011) StalAge - An algorithm designed for construction of speleothem
1090age models. *Quaternary Geochronology*, **6**, 369-382.

1091Scholz, D., Hoffmann, D.L., Hellstrom, J. and Bronk Ramsey, C. (2012) A comparison of different
1092methods for speleothem age modelling. *Quaternary Geochronology*, **14**, 94-104.

1093Shackleton, N.J. (1969) LAST INTERGLACIAL IN MARINE AND TERRESTRIAL RECORDS. *Proceedings of the*
1094*Royal Society Series B-Biological Sciences*, **174**, 135-+.

1095Shackleton, N.J., Sanchez-Goni, M.F., Paillet, D. and Lancelot, Y. (2003) Marine Isotope Substage 5e and
1096the Eemian interglacial. *Global and Planetary Change*, **36**, 151-155.

1097Shen, C.-C., Wu, C.-C., Cheng, H., Lawrence Edwards, R., Hsieh, Y.-T., Gallet, S., Chang, C.-C., Li, T.-Y.,
1098Lam, D.D., Kano, A., Hori, M. and Spötl, C. (2012) High-precision and high-resolution carbonate ^{230}Th
1099dating by MC-ICP-MS with SEM protocols. *Geochimica et Cosmochimica Acta*, **99**, 71-86.

1100Sirocko, F., Seelos, K., Schaber, K., Rein, B., Dreher, F., Diehl, M., Lehne, R., Jager, K., Krbetschek, M.
1101and Degering, D. (2005) A late Eemian aridity pulse in central Europe during the last glacial inception.
1102*Nature*, **436**, 833-836.

1103Sivan, D., Sisma-Ventura, G., Greenbaum, N., Bialik, O.M., Williams, F.H., Tamisiea, M.E., Rohling, E.J.,
1104Frumkin, A., Avnaim-Katav, S., Shtienberg, G. and Stein, M. (2016) Eastern Mediterranean sea levels
1105through the last interglacial from a coastal-marine sequence in northern Israel. *Quaternary Science*
1106*Reviews*, **145**, 204-225.

1107Sánchez Goñi, M.F., Eynaud, F., Turon, J.L. and Shackleton, N.J. (1999) High resolution palynological
1108record off the Iberian margin: direct land-sea correlation for the Last Interglacial complex. *Earth and*
1109*Planetary Science Letters*, **171**, 123-137.

1110Timperman, M. (1989) *La Grotte de Han: Au Fil de Siècles*, Gembloux, 66 pp.

1111Treble, P., Shelley, J.M.G. and Chappell, J. (2003) Comparison of high resolution sub-annual records of
1112trace elements in a modern (1911-1992) speleothem with instrumental climate data from southwest
1113Australia. *Earth and Planetary Science Letters*, **216**, 141-153.

1114Tzedakis, C., Capron, E., de Vernal, A., Otto-Bliesner, B. and Wolff, E. (2015) New PAGES-PMIP working
1115group on Quaternary Interglacials (QUIGS) *PAGES Magazine*, **23**, 83.

1116Tzedakis, P.C., Frogley, M.R. and Heaton, T.H.E. (2003) Last Interglacial conditions in southern Europe:
1117evidence from Ioannina, northwest Greece. *Global and Planetary Change*, **36**, 157-170.

1118Van Rampelbergh, M., Verheyden, S., Allan, M., Quinif, Y., Cheng, H., Edwards, L.R., Keppens, E. and
1119Claeys, P. (2015) A 500-year seasonally resolved $\delta^{18}O$ and $\delta^{13}C$, layer thickness and calcite aspect
1120record from a speleothem deposited in the Han-sur-Lesse cave, Belgium. *Clim. Past*, **11**, 789-802.

1121Van Rampelbergh, M., Verheyden, S., Allan, M., Quinif, Y., Keppens, E. and Claeys, P. (2014) Monitoring
1122of a fast-growing speleothem site from the Han-sur-Lesse cave, Belgium, indicates equilibrium deposition
1123of the seasonal delta O-18 and delta C-13 signals in the calcite. *Climate of the Past*, **10**, 1871-1885.

1124Vansteenberghe, S., Verheyden, S., Cheng, H., Edwards, R.L., Keppens, E. and Claeys, P. (2016)
1125Paleoclimate in continental northwestern Europe during the Eemian and early Weichselian (125-97ka):
1126insights from a Belgian speleothem. *Climate of the Past*, **12**, 1445-1458.

1127Veres, D., Bazin, L., Landais, A., Kele, H.T.M., Lemieux-Dudon, B., Parrenin, F., Martinerie, P., Blayo, E.,
1128Blunier, T., Capron, E., Chappellaz, J., Rasmussen, S.O., Severi, M., Svensson, A., Vinther, B. and Wolff,
1129E.W. (2013) The Antarctic ice core chronology (AICC2012): an optimized multi-parameter and multi-site
1130dating approach for the last 120 thousand years. *Climate of the Past*, **9**, 1733-1748.

1131Verheyden, S. (2012) The 8.2 ka event: is it registered in Belgian speleothems? *Speleogenesis and*
1132*Evolution of Karst Aquifers*, 3-8.

1133Verheyden, S., Baele, J.M., Keppens, E., Genty, D., Cattani, O., Hai, C., Edwards, L., Hucai, Z., Van
1134Strijdonck, M. and Quinif, Y. (2006) The proserpine stalagmite (Han-sur-Lesse cave, Belgium):
1135Preliminary environmental interpretation of the last 1000 years as recorded in a layered speleothem.
1136*Geologica Belgica*, **9**, 245-256.

1137Verheyden, S., Genty, D., Deflandre, G., Quinif, Y. and Keppens, E. (2008) Monitoring climatological,
1138hydrological and geochemical parameters in the Pere Noel cave (Belgium): implication for the
1139interpretation of speleothem isotopic and geochemical time-series. *International Journal of Speleology*,
1140**37**, 221-234.

1141Verheyden, S., Keppens, E., Fairchild, I.J., McDermott, F. and Weis, D. (2000) Mg, Sr and Sr isotope
1142geochemistry of a Belgian Holocene speleothem: implications for paleoclimate reconstructions.
1143*Chemical Geology*, **169**, 131-144.

1144Verheyden, S., Keppens, E., Quinif, Y., Cheng, H.J. and Edwards, L.R. (2014) Late-glacial and Holocene
1145climate reconstruction as inferred from a stalagmite - Grotte du Pere Noel, Han-sur-Lesse, Belgium.
1146*Geologica Belgica*, **17**, 83-89.

1147Woillard, G.M. (1978) Grande Pile peat bog: A continuous pollen record for the last 140,000 years.
1148*Quaternary Research*, **9**, 1-21.

1149Wolff, E.W., Chappellaz, J., Blunier, T., Rasmussen, S.O. and Svensson, A. (2010) Millennial-scale
1150variability during the last glacial: The ice core record. *Quaternary Science Reviews*, **29**, 2828-2838.

1151Wynn, P.M., Fairchild, I.J., Spotl, C., Hartland, A., Matthey, D., Fayard, B. and Cotte, M. (2014)
1152Synchrotron X-ray distinction of seasonal hydrological and temperature patterns in speleothem
1153carbonate. *Environmental Chemistry*, **11**, 28-36.

1154Zhuravleva, A., Bauch, H.A. and Van Nieuwenhove, N. (2017) Last Interglacial (MIS5e) hydrographic
1155shifts linked to meltwater discharges from the East Greenland margin. *Quaternary Science Reviews*, **164**,
115695-109.