



## **Efficacy of parent-mediated communication-focused treatment in toddlers with autism (PACT) delivered via videoconferencing: A randomised controlled trial study protocol**

Lucie Jurek, Pauline Occelli, Angélique Denis, Anouck Amestoy, Thierry H. Maffre, Tom Dauchez, Marie Joëlle Oreve, Amaria Baghdadli, Carmen M. Schroder, Agathe Jay, et al.

### **► To cite this version:**

Lucie Jurek, Pauline Occelli, Angélique Denis, Anouck Amestoy, Thierry H. Maffre, et al.. Efficacy of parent-mediated communication-focused treatment in toddlers with autism (PACT) delivered via videoconferencing: A randomised controlled trial study protocol. *BMJ Open*, 2021, 11 (4), pp.e044669. 10.1136/bmjopen-2020-044669 . hal-03218437

**HAL Id: hal-03218437**

**<https://hal.science/hal-03218437>**

Submitted on 6 May 2022

**HAL** is a multi-disciplinary open access archive for the deposit and dissemination of scientific research documents, whether they are published or not. The documents may come from teaching and research institutions in France or abroad, or from public or private research centers.

L'archive ouverte pluridisciplinaire **HAL**, est destinée au dépôt et à la diffusion de documents scientifiques de niveau recherche, publiés ou non, émanant des établissements d'enseignement et de recherche français ou étrangers, des laboratoires publics ou privés.



Distributed under a Creative Commons Attribution - NonCommercial 4.0 International License

# BMJ Open Efficacy of parent-mediated communication-focused treatment in toddlers with autism (PACT) delivered via videoconferencing: a randomised controlled trial study protocol

Lucie Jurek,<sup>1,2</sup> Pauline Occelli,<sup>2,3</sup> Angelique Denis,<sup>3</sup> Anouck Amestoy,<sup>4</sup> Thierry Maffre,<sup>5</sup> Tom Dauchez,<sup>4</sup> Marie-Joelle Orevé,<sup>6</sup> Amaria Baghdadli,<sup>7,8</sup> Carmen Schroder,<sup>9,10</sup> Agathe Jay,<sup>1</sup> Amélie Zelmar,<sup>2,3</sup> Anne Revah-Levy,<sup>11,12</sup> Natacha Gallifet,<sup>1</sup> Catherine Aldred,<sup>13</sup> Shruti Garg,<sup>14</sup> Jonathan Green,<sup>14,15</sup> Sandrine Touzet,<sup>2,3</sup> Marie-Maude Geoffray <sup>1,2</sup> On behalf of IFPAD study group

**To cite:** Jurek L, Occelli P, Denis A, *et al.* Efficacy of parent-mediated communication-focused treatment in toddlers with autism (PACT) delivered via videoconferencing: a randomised controlled trial study protocol. *BMJ Open* 2021;**11**:e044669. doi:10.1136/bmjopen-2020-044669

► Prepublication history and additional material for this paper is available online. To view these files, please visit the journal online (<http://dx.doi.org/10.1136/bmjopen-2020-044669>).

Received 09 September 2020  
Revised 04 March 2021  
Accepted 14 March 2021



© Author(s) (or their employer(s)) 2021. Re-use permitted under CC BY-NC. No commercial re-use. See rights and permissions. Published by BMJ.

For numbered affiliations see end of article.

## Correspondence to

Dr Marie-Maude Geoffray;  
Marie-Maude.GEOFFRAY@ch-le-vinater.fr

## ABSTRACT

**Introduction** Intervention in the preschool period is currently recommended for autism spectrum disorder. Therapies delivered by parents are particularly suitable for young children. Preschool Autism Communication Trial (PACT) is a parent-mediated therapy that has shown a significant and sustained impact on autism symptom reduction. However, access to such evidence-based therapies for families is limited due to autism centres located in large urban areas. Using videoconferencing to deliver PACT training to parents may improve accessibility for families living in underserved areas.

**Methods and analysis** This single-blind randomised controlled trial, involving six sites in France, will investigate the efficacy of a telehealth, videoconferencing-based, parent-mediated PACT therapy on autism symptoms, over a 12-month period. It will compare PACT plus treatment as usual (TAU) against TAU only in a cohort of 238 toddlers (119 per group) aged 18–36 months at inclusion and living with their families more than 40 min away from the specialist centres for autism. Primary outcome will include change of overall autism score on the Autism Diagnostic Observation Scale (ADOS) at 12 months. Secondary outcomes will measure change in child skills, child functioning, impact on parents (stress, health, priorities) and implementation characteristics. Repeated measures analyses will be used to test the effect of PACT intervention on the overall ADOS module 1 score over the 12-month study period. Linear mixed models will be used with time, treatment allocation and the interaction between treatment and time as fixed effects and individual variation as random effect.

**Ethics and dissemination** This protocol (V.5, date: 25 October 2019) is approved by the French National Review Board (reference no 2018-A02516-49). The results will be disseminated via peer-reviewed journals  
**Trial registration number** NCT04244721.

## Strengths and limitations of this study

- Large multicentre randomised controlled trial in children with autism spectrum disorder under 3 years old, testing remote delivery of an evidenced intervention.
- Assessment partially done by videoconferencing and based on video material sent by parents.
- Recruitment targeted to children living in underserved areas.
- Short-term effect of the intervention will be assessed at 12 months (end of the intervention).
- Owing to the nature of the intervention, parents of the children and Preschool Autism Communication Trial therapists will not be blind to the allocation group.

## INTRODUCTION

### Rationale and background

Autism spectrum disorder (ASD) is a common neurodevelopmental disorder with a population prevalence of at least 1.5% in developed countries and can cause significant lifelong disability<sup>1–3</sup> and burden for families and caregivers.<sup>4</sup> Diagnosis is possible as early as 18 months of age.<sup>5</sup> Current evidence suggests that interventions delivered in the early developmental period before the age of 3 years has the potential for maximal impact on autism symptom severity.

Therapies can be delivered by therapists, teachers and parents.<sup>6</sup> For preschool children with ASD, parent-mediated therapies can guide parents to face challenging social interaction with their children.<sup>7 8</sup> Among the different parent-mediated therapies, Preschool Autism Communication Trial

(PACT) has shown significant short and long-term efficacy on objectively assessed autism symptoms in children aged from 2 to 10 years in a large UK cohort (N=152); as showed in a recent systematic review<sup>9</sup> and meta-analysis.<sup>10</sup> In PACT, parents are guided by a therapist via video feedback to optimise parent-child dyadic interaction, which in turn impacts on child language, communication and autism symptoms.<sup>11</sup> In a trial of PACT intervention compared with regular care, PACT showed a statistically significant effect at 13-month endpoint to reduce of autism symptom severity measured on Autism diagnostic Observation Schedule version 2 (ADOS-2) (effect size 0.64; 95% CI 0.07 to 1.20); and an increase in parental communication synchrony with the child and child communication initiations with the parent.<sup>12</sup> The follow-up study showed evidence of sustained effect on autism symptom severity 6 years after intervention end, with a significant overall reduction in symptom severity over the course of trial and follow-up period (effect size=0.55, 95% CI 0.14 to 0.91, p=0.004).<sup>13</sup> A mechanistic study also confirmed that the distal effect of PACT therapy on autism severity measured by ADOS was mediated by the improvement of child communication initiations, which in turn was mediated by improved parent-child synchrony.<sup>14</sup>

Availability of PACT therapy is limited; even more so in rural settings or in regions away from specialist centres. Using videoconferencing run by therapists to train parents in PACT may, therefore, be a viable alternative to make such therapies available to families living far from autism centres. Previous studies have shown that it is possible to provide parent-mediated therapies in autism by videoconferencing successfully.<sup>15 16</sup> The team who developed the PACT therapy reported positive experiences of parent guidance by videoconferencing (C. Aldred and J. Green, personal communication, June 10, 2020). Indeed, videoconferencing was used to deliver some of the PACT sessions in a recently published randomised controlled trial (RCT).<sup>17</sup> However, PACT has never been evaluated when exclusively delivered by videoconferencing. The barriers and facilitators to delivering such therapies via videoconferencing are not sufficiently well understood, and hence it is essential to investigate and address them adequately.<sup>18 19</sup>

**Research question:** The proposed protocol is for a large RCT in children under 3 years with ASD to evaluate the effectiveness on autistic symptom severity and other measures of PACT therapy delivered to parents by videoconferencing.

A significant effect would justify and facilitate the routine use of videoconferencing therapy in early intervention and improve the dissemination of this evidence-based practice.

The hypothesis is that PACT intervention delivered by videoconferencing+treatment as usual (TAU) will have a superior efficacy on child autism symptom severity as compared with TAU alone.

## Objectives

Our primary objective will be to test the efficacy of a parent-mediated PACT therapy, delivered by trained therapists to parents living in underserved areas via videoconferencing over a 12-month period, on overall autistic symptoms in children with ASD aged from 18 to 36 months at inclusion, measured using the ADOS-2.

Our secondary objectives will include an evaluation of change in child sociocommunicative interactions, language, communication initiation and daily adaptive behaviour. At the parent level, we will evaluate the intervention effects on stress, health and family functioning.

The implementation of the therapy will be evaluated through the adherence of professionals and parents to PACT, and acceptability and feasibility of the PACT sessions to parents and therapists.

## METHOD

### Study design

This is a prospective multicentre RCT with two parallel group, 1:1 ratio, single-blind comparing PACT intervention+TAU against TAU alone. Evaluation will be carried out using quantitative and qualitative mixed-method approaches.<sup>20 21</sup>

Semistructured interviews with parents and therapists will be conducted to understand the barriers and facilitators of using the videoconferencing approaches to delivering the PACT therapy.

Figure 1 shows Consolidated Standards of Reporting Trials (CONSORT) flow chart of the study.

### Setting

We will run this trial in six academic centres located in child and adolescent public hospitals in France. All centres have a unit for ASD diagnosis and assessment and a distinct unit for intervention where therapists have been trained in PACT and can provide PACT via videoconferencing. The parents receiving intervention come from a French-speaking population including socioeconomically disadvantaged groups.

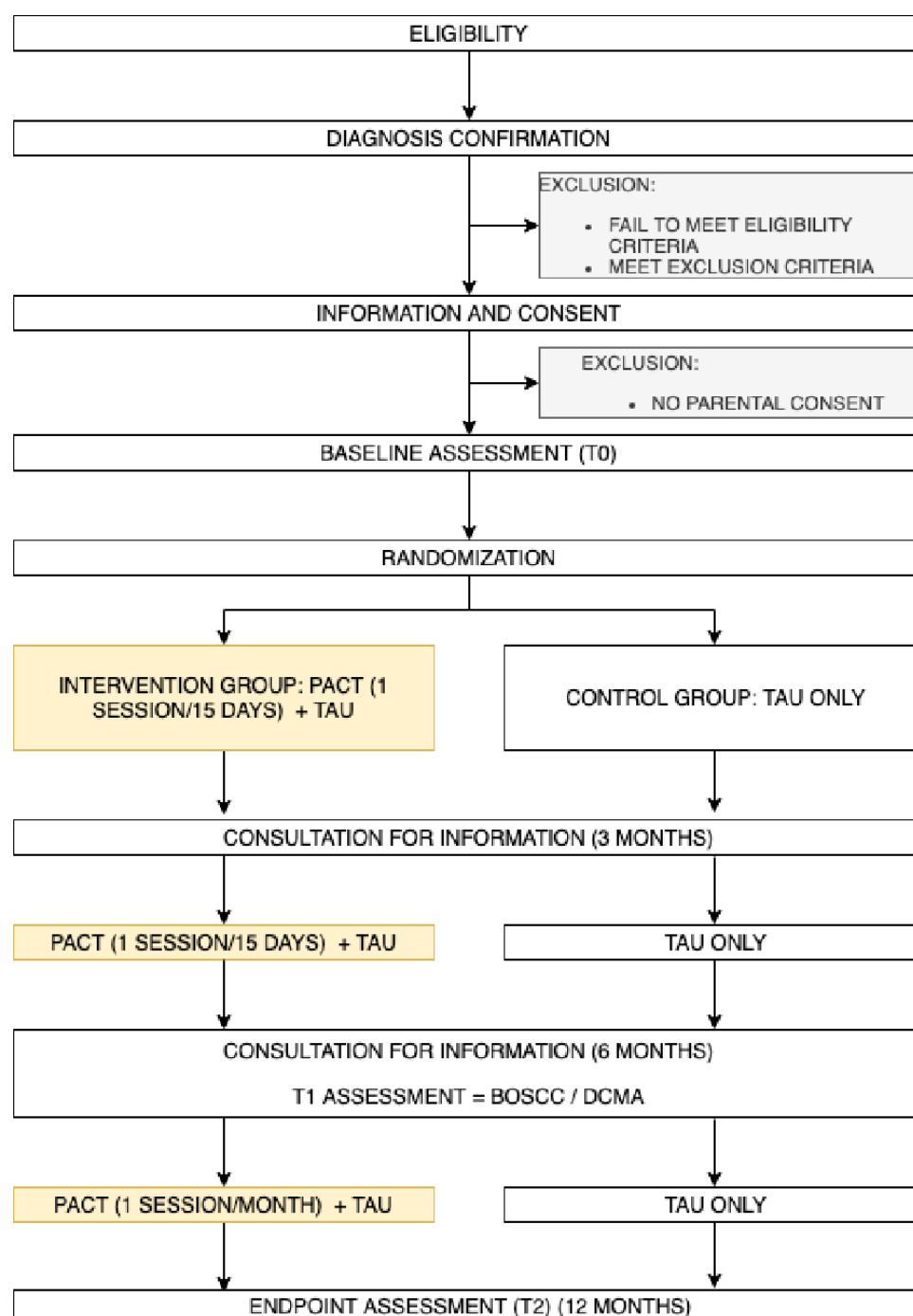
### Patient and public involvement

Alloisio (Association AAA <https://autisme-ambition-avenir.com>) and Belkhatat (association <https://bleu-network.fr/pro>) are parents of a child with autism and represent two different association. They are part of the steering committee.

### Population

#### Inclusion criteria

Children will be included if they meet the following criteria: (1) aged between 18 and 36 months old at referral, (2) meet criteria for ASD using the two gold-standard instruments ADOS-2 and ADI-R (Autism Diagnostic Interview-Revised). For inclusion into the study, the severity score comparison (CSS) on ADOS-2 will be greater or equal to 4. The score on the ADI-R algorithm



**Figure 1** CONSORT flow chart of the study. BOSCC, Brief Observation of Social Communication Change; CONSORT, Consolidated Standards of Reporting Trials; DCMA, Dyadic Communication Measure for Autism; PACT, Preschool Autism Communication Trial; TAU, treatment as usual.

for toddlers will be greater or equal to 11.<sup>22</sup> The diagnosis will be confirmed by a multidisciplinary team trained in ASD assessment and diagnoses based in the academic departments of the hospitals, (3) have a non-verbal age equal to or above 12 months on the Mullen Scale of Early learning (MSEL) and<sup>23</sup> (4) live more than 40 min away from a Centre for Resources in Autism (regional centre)

Referred parents will be included if they meet the following criteria: (1) speak French with their children (2) are able to use videoconferencing methods with

therapists who will be based at the centre (assessed through the conduct of the Vineland Assessment Behavioural Scale by videoconferencing) (see online supplemental appendix 1)

#### Exclusion criteria

Exclusion criteria for the child will include:

- A twin brother or sister with ASD or a brother or sister already included in the study.
- Diagnosed with epilepsy requiring medication.



- iii. Severe hearing or visual impairment.
- iv. An identification of a genetic anomaly which may impact on their ability to participate in the intervention or on data validity (determined by the principal investigator on a case-by-case basis).

Exclusion criteria for the referred parents (at least one parent with) will include:

- i. Severe hearing or visual impairment.
- ii. Severe psychiatric disorder.
- iii. Unstable somatic disorders preventing participation in the intervention.
- iv. Lack of internet provision.
- v. Not available for regular intervention and follow-up.
- vi. Opposition of one parent to the child's participation in the study.
- vii. Currently undertaking PACT therapy.

### Intervention conducted in the experimental group

#### Eligibility criteria for PACT therapist and adherence

Therapists delivering the intervention will include speech language pathologist (SLP), occupational therapists, clinical nurses, psychologists or child and adolescent psychiatrists, all specialised in ASD. The therapists have already received formal training and supervision in PACT from the team who developed this training.<sup>12 24</sup> Fidelity to PACT therapy will be maintained by regular meetings between therapists of all centres, with scoring and feedback of videotaped therapy sessions obtained during the study.

#### PACT treatment principles

As previously described,<sup>17</sup> parents will be trained, via videofeedback, to identify and set key strategies facilitating the sociocommunicative interactions between their child and themselves. Parents will also be encouraged to use PACT every day outside the training session at least half an hour a day. The therapy follows a six-staged approach based on child developmental progression and strategies for establishing fundamental skills for the sociocommunicative development. The first two stages aim to increase parent's identification of child focus and interest, synchrony, responsiveness and sensitivity to the child interest and communication. The third and fourth stages are targeted towards developing expression and comprehension of the child by commenting and modelling language adapted to the child's developmental level. Child communication initiation is also improved in the fifth stage through different strategies such as anticipation and routine. The last stage aims to develop conversation and expansion of language for verbal children. Progression from one stage to the next depends on predefined criteria.

Based on the protocol of the first PACT RCT, parents will receive 18 sessions of training in PACT with the therapist over the 12 months<sup>12 13</sup>; 1-hour session every fortnight for the first 6 months to learn PACT strategies followed by 1-hour session per month over the next 6 months to maintain the capacity of parents to deliver the strategies.

Therapist will train only one parent per family and maintain fidelity to the therapy manual. The 'referent parent' will have to be designated before the randomisation of the child. If the referent becomes unavailable, the therapy will stop or will continue with the other parent if possible and this change will be reported.

#### Parent training session with the professional via videoconferencing

Before each session, the parent will be asked to send a 10 min video of their interaction with their child to the therapist via a secure cloud link. During the videoconferencing session (as in face-to-face intervention), referent parent will begin with a 5 min discussion about their progress since the last session. The therapist will then share his/her screen and watch the home-based 10 min video together with the parent. Together the parent and therapist will identify, review and discuss specific clips that demonstrate accomplishment of therapy goals for the relevant stage of the PACT programme. The therapist's role will be to guide parents to identify successful strategies and responses (ie, episodes of engagement and/or mutual sharing with their child). Parents will be supported to reflect on their role in enhancing interaction and to identify new intervention goals.

#### Parent PACT implementation in daily life outside the therapy session

At the end of each session, the therapist will support the parent in setting 2–3 new goals, based on the strategies identified during the session. The therapist will encourage the parent to practice the strategies for the next session and discuss opportunities to achieve these goals in daily routine at home for at least 30 min per day. Parents will be guided to embed PACT strategies in everyday routines across different contexts. As therapy progresses, parents will be asked to send 10 min home videos of daily routines in different contexts.

#### TAU and two follow-up consultations on ASD and its management

Regardless of group allocation, parents will receive TAU consisting of psychoeducation about ASD, management and educational support for nursery and preschool placement. Parents will be referred to any relevant care available in the community (eg, SLP, occupational therapist, educator, behavioural psychologist, psychiatrist). TAU received during the course of the study will be described in both groups.

Regardless of group allocation, a psychiatrist or a psychologist from each autism centre will provide two supplementary 45 min follow-up consultations conducted by videoconferencing at 3 and 6 months after inclusion. This consultation will be carried out by following an interview guide. Three thematic areas will be systematically discussed with the parents: ASD information, access to treatment in the community, support for school or nursery. These follow-up consultations will ensure that

parents of both groups receive homogeneous information on ASD and its management.

### Avoidance of contamination

Currently, PACT is not widely implemented in the community in France, particularly in the rural areas. Any families who are currently in receipt of PACT intervention will be excluded from this trial. However, any PACT that might be received in the community as part of TAU will be recorded.<sup>25</sup>

Research assessors will be separate to the therapists and will be located and supervised separately in each centre.

Professionals conducting the follow-up consultations will not be trained in PACT therapy or be part of the research assessments.

### Measures

#### Primary outcome

##### *To assess autism severity*

ADOS-2 is a semistructured, researcher–child interaction based, standardised observational assessment, in communication, play, imaginative skills and repetitive behaviours.<sup>26 27</sup> It is a widely used scale in the field of ASD research with good psychometric properties, recommended for the diagnosis of ASD and assessment of core autistic symptoms.<sup>28</sup>

At baseline and follow-up assessment after 12 months, we will use only ADOS-2 module 1, for children who are 18 months of age and older children who use no or few words.

There is a good inter-rater reliability for module 1.<sup>27</sup> Internal consistency Cronbach's alpha coefficients was high in original study.<sup>27</sup> This scale has also shown that it can measure change in autism severity.<sup>13 28</sup>

ADOS-2 is composed of different items scored 0–3 or 0–2. Item A1 codes the level of language, from the severity for 'the child is using regular use of statements with two or more words' (code 0) to 'the child has no spontaneous use of approximate words or words' (code 4). For children with no or limited language ( $A1 \geq 3$ , the two items measuring language in the algorithm (item A3 speech abnormalities, item A5 stereotyped language) will be scored 3 (worst value) (see reference 12). The minimum overall ADOS-2 module 1 raw score will be 0 and the maximum score 42. A higher score means more autistic symptoms.

Our primary outcome will be the change between baseline and 12 months in the overall raw score in reciprocal sociocommunicative interactions and repetitive and restrictive behaviours in line with the DSM-5 (Diagnostic and Statistical Manual of Mental Disorders, fifth version).<sup>26 29</sup>

Researchers will be trained to achieve recognised standards. Regular reliability meetings of all researchers will address any discrepant ratings to maintain researcher calibration.

### Secondary outcomes

To assess social communication and interaction in the natural setting of parent–child interaction at home:

- Brief Observation of Social Communication Change (BOSCC).<sup>30</sup>

To assess dyadic communication in the natural setting of parent–child interaction at home:

- Dyadic Communication Measure for Autism (DCMA).<sup>24</sup>

To assess child cognitive development:

- Mullen Scale of Early Learning (MSEL).<sup>23</sup>

To assess child language development:

- Development of Expressive Language, (Développement du Langage de Production en Français, DLPPF).<sup>31</sup>

To assess adaptative behaviour of the child:

- Vineland Adaptive Behaviour Scales second version (VABS-2).<sup>32</sup>

To assess Parent's Stress, health, priorities and experience of the family:

- Autism Family Experience Questionnaire (AFEQ).<sup>33</sup>
- Parental Stress Index (PSI).<sup>34</sup>
- General Health Questionnaire<sup>35</sup>

To assess implementation of the intervention:


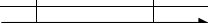
- PACT Fidelity Rating Scale.
- Number of PACT training sessions undertaken.
- Quality of videoconferencing during each session.
- Parent's acceptability of videoconferencing and implementation of PACT at home (self-report on Likert-scale).
- Number of hours per day using PACT at home at 12 months.
- Parent's qualitative PACT adherence coded with DCMA on a 12min home child–parent interaction video.

Figure 2 shows schedule of enrolment, interventions and assessments. Online supplemental appendix 1 shows more detailed about assessment.

### Participant's timeline

Toddlers with a suspected ASD will be approached by health professionals with information about this study. The research recruitment team will meet with the family, complete the ADI-R during the first meeting, and confirm eligibility criteria. Complementary assessments, including ADOS, MSEL with the child and Vineland will be conducted by videoconferencing with the parent, to assess the criteria for eligibility. If toddlers and families meet the criteria for participation, parents will be informed about the study and possibility of an intervention using PACT or TAU based on randomisation. A written informed consent will be obtained if the parent/family agrees to participate in the study after 1 week of reflection (see consent form in online supplemental appendix 2).

The 'referent parent' used to refer to the parents who will engage with the PACT therapy will be decided before randomisation. Children will be subsequently randomised into the intervention or TAU group. Parents will be informed of the result of the randomisation

Time point	Enrolment	T0 baseline	T1 6 months	T2 12 months
Eligibility screen				
DSM-5 criteria	x			
ADOS-2	x			
ADI-R for toddlers	x			
Nonverbal skills MSEL	x			
Adaptative behavioral level: VABS 2 coded based on an interview done by videoconferencing with parents	x			
Informed consent	x			
Allocation		x		
Intervention				
PACT training (1h/15 days for 6 months then 1h/month for 6 months) + daily practice at home				
Treatment as usual				
Assessment				
Sociodemographic data		x		x
Autistic symptoms: ADOS-2 (primary outcome)		x		x
Change in socio-communicative interactions: BOSCC Played-based interaction between caregiver and child at home		x	x	x
Communication,synchronization and initiatives: DCMA at home		x	x	x
Expressive and receptive language Mullen scale		x		x
Daily language DLPF		x		x
Adaptative behavioral level: VABS 2 by videoconferencing		x		x
Parental stress index: PSI-short form		x		x
General parent’s health: GHQ-28		x		x
Parents quality of life and priorities: AFEQ		x		x
Acceptability of PACT intervention and TAU. (Likert scale)				x
Implementation: <ul style="list-style-type: none"><li>▪ Number of PACT training session with the professional</li><li>▪ Mean of quality of videoconferencing collected after each session</li><li>▪ Number of hours declared by parents using PACT at home</li></ul>				<div><div>x</div><div>x</div><div>x</div></div>
Qualitative interview (about 35 parents in the PACT intervention group) and all the therapists				x

**Figure 2** Schedule of enrolment, interventions and assessments (SPIRIT). ADI-R, Autism Diagnostic Interview-Revised; ADOS-2, Autism Diagnostic Observation Scale-2; AFEQ, Autism Family Experience Questionnaire; BOSCC, Brief Observation of Social Communication Change; DCMA, Dyadic Communication Measure for Autism; DLFP, Développement du langage de Production en Français; DSM-5, Diagnostic and Statistical Manual of Mental Disorders, fifth version; GHQ, General Health Questionnaire; PACT, Preschool Autism Communication Trial; PSI, Parental Stress Index; SPIRIT, Standard Protocol Items: Recommendations for Interventional Trials; TAU, treatment as usual; VABS, Vineland Adaptive Behaviour Scale.

### Assignment of intervention

#### Allocation sequence generation and randomisation

All eligible toddlers, with parental consent, will be assigned to the two study groups in a 1:1 ratio using the minimisation method with the following stratification factors: the centre, the children's age, level of language (according to the ADOS2 scale) and gender. To ensure

allocation concealment, a minimisation algorithm with a 0.90 random element will be used and known only to the statistician (AD). The randomisation will be centralised.

#### Blinding

Owing to the nature of the intervention, parents and PACT therapists cannot be blind to the allocation group.

PACT therapists will not be involved in ASD assessment and diagnosis. An assessor blind to the allocation group will administer every assessment. Data manager and biostatistician will be blinded to the allocation groups.

## Data collection and management

### Data collection

Data will be collected through standardised observations, parental questionnaires and interviews carried out by a researcher blind to the allocation. We will be particularly vigilant about the measurement accuracy of the first criterion of judgement as described in the paragraph on ADOS-2.

### Participation retention and follow-up

Children of both groups will benefit from early diagnosis and assessment and will have the same follow-up evaluations over the 1-year study period in the respective study centres. Any discontinuation of study participation will be collected and recorded with the reasons.

### Data management

The study data will be collected on a secure electronic case report form (eCRF) that will be available at each centre through an internet portal. No personal identifying information will be mentioned on the eCRF. Each subject included in the study will be assigned a unique identification number.

All study data will be stored securely in the Academic Hospital of Lyon. All electronic data will be secured on a password-protected laptop. Paper-based study documents will be stored in a secure filing cabinet at each centre. Access to these files will be limited to research staff involved in the study.

The eCRF will only include the data necessary for the analysis to be reported in a scientific publication.

## Statistical analysis

### Simple size calculation

On the basis of the findings of the PACT Trial,<sup>12</sup> we have powered the study to be able to detect a difference in overall change on the ADOS score of 2 points. The group difference in mean change between baseline and month 12 was -1 point for ADOS social affect score (mean change=2.9, SD=3.9 in TAU group and mean change=-3.9, SD=4.7 in PACT+TAU group) and -0.5 points for ADOS restricted and repetitive behaviours score (mean change=2.9, SD=3.9 in TAU group and mean change=-3.9, SD=4.7 in PACT+TAU group). The premeasure and postmeasure were correlated at 0.67. Therefore, the most conservative values were fixed for ADOS SD and for correlation among the repeated measures from a single participant. A target of 238 subjects (119 subjects per treatment arm) was planned to be randomised in the trial. Assuming a two-point difference in favour of the PACT+TAU compared with TAU, an SD of 5, a correlation between subsequent visits of 0.5, a drop-out rate of 20% and a two-sided significance level of 0.05, the planned sample size would provide about 80% power for the study.

## Feasibility of recruitment

A strong partnership with ASD orientation platforms recently implemented in France, a broad communication (meeting, mail, flyers) to healthcare professionals (Speech pathologist, Occupational therapist, therapist, paediatrician, general practitioner) family associations and other stakeholders will allow the trial team to reach the sample size within 2 years.

## Statistical analysis

A full statistical analysis plan will be finalised prior to database lock. Statistical analysis and results will be reported at the 12-month endpoint in accordance with the CONSORT 2010 statement. No interim analysis will be scheduled. All the statistical analysis will be carried out according to the intention to treat principle using SAS statistical software (SAS Institute).

Baseline characteristics will be presented in each group.

Summary statistics will be presented for process variables (number of PACT sessions, quality of videoconferencing per session, acceptability and satisfaction of PACT intervention, number of hours declared to be realised with the child) to show the feasibility and acceptability of PACT implementation in the intervention group.

The pattern of missing data will be investigated (number and mechanism of missingness). Missing data strategies can be applied, and sensitivity analysis of different strategies (simple or multiple imputation) will be conducted.

A repeated measures analyses will be used to test the effect of PACT intervention on overall ADOS module 1 score over the 12-month study period. A linear mixed model will be run with the overall ADOS score as the dependent variable and including time (baseline, month 12), treatment (TAU or TAU+PACT) and the interaction between treatment and time as fixed effects and patient as random effect. Model will be adjusted for stratification factors (centre, age, level of language (item A1 ADOS-2) and gender) and baseline variables that show evidence of treatment group imbalance. Time will be represented by dummy variable. Model assumption will be verified according to residual analysis. If most of the assumptions are not met, other alternatives such as transformation of ADOS overall raw score will be examined. Sensitivity analyses like complete case and per-protocol analysis will be performed to assess the robustness of the results to protocol deviations. In complete-case analysis, only patient with primary outcome documented will be analysed. In per-protocol participants who violate the protocol will be excluded from the analysis.

All the secondary outcomes, (overall total score of the BOSCC, communication initiation and synchrony measured with the DCMA, overall raw score of the MSEL in receptive and expressive language, overall score in expressive language of the DLFP, overall raw score of communicative and social of the VABS, PSI, Parent General Health score, AFEQ score) will be analysed in a similar way using with appropriate linear or generalised



Data category	Information
Primary registry and trial identifying number	clinicaltrials.gov : NCT04244721
Date of registration in primary registry	January 28, 2020
Secondary identifying numbers	2018-A02516-49
Source of monetary or material support	This study is supported by a grant from the Programme Hospitalier de Recherche Clinique inter-régional Rhône Alpes (PHRCI-15-065) from the AURA region and a grant by the Caisse Nationale de solidarité pour l'autonomie (CNSA) as part of the call for projects launched for IReSP (Institut de Recherche en Santé Publique) in 2016 in collaboration with the Institut national de la santé et de la recherche médicale (Inserm) ( IReSP-17-Autisme3-16).
Primary sponsor	Centre Hospitalier Le Vinatier, Bron, France
Secondary sponsor	Not applicable
Contact for public queries	Marie-Maude Geoffray (PI), email: marie-maude.geoffray@ch-le-vinatier.fr ; Lucie Jurek, email : lucie.jurek@ch-le-vinatier.fr
Contact for scientific queries	Marie-Maude Geoffray (PI), email: marie-maude.geoffray@ch-le-vinatier.fr Sandrine Touzet (scientific contact), email: sandrine.touzet@chu-lyon.fr
Public title	Efficacy of a parent- mediated communication-focused treatment in toddler with autism (PACT)when parents trained by videoconference: a randomised controlled trial study protocol
Scientific title	Efficacy of a parent- mediated communication-focused treatment in toddler with autism (PACT)when parents trained by videoconference: a randomised controlled trial study protocol
Countries of recruitment	France
Health condition or problem studied	Autism spectrum disorder (ASD)
Interventions	<i>Intervention:</i> PACT for toddlers and young children with ASD <i>Description:</i> PACT delivered by the parent trained remotely by therapists 1 hour per 2-weeks during 6 months and 1 hour per month the following 6 months. <i>Control:</i> care available in the community, i.e. consultations with a psychologist or child and adolescent psychiatrist, speech and language therapy, occupational therapy, individual or group psychotherapy.
Key inclusion and exclusion criteria	<i>Age:</i> between 18 and 36 months <i>Sex:</i> male or female <i>Inclusion criteria:</i> diagnosis of ASD (Diagnosis and Statistical Manual of Mental Disorders, Fifth Edition, and Autism Diagnosis Observation Schedule), child will have a non-verbal age above 12 months on the Mullen Scale of Early learning, family living further than 40 min away from an ASD specialized center. <i>Exclusion criteria:</i> serious neurological or physical condition, family unavailable for a regular follow-up.
Study type	Interventional <i>Allocation:</i> randomized 1:1; parallel assignment; blinding: assessor blind
Date of first enrolment	15th July 2020
Target sample size	238
Recruitment status	Recruiting
Primary outcome	Change in ADOS-2 module 1 standardized score at 12 months
Key secondary outcomes	Child development, child adaptive behavior, child socio-communicative abilities, quality of life of parents, parental stress, obstacle and facilitators of the intervention model.

**Figure 3** Who trial registration data set. ADOS, Autism Diagnostic Observation Scale; PACT, Preschool Autism Communication Trial.

linear mixed models. Tobit models will be used to address potential floor effects.

We will finally explore the parent's and children's characteristics, moderating the implementation and efficacy of this therapy. We will also test the previously described mediators implicated in the efficacy of this therapy.<sup>14</sup>

### Qualitative analysis of barriers and facilitators of implementation

Based on parents and of the therapist's reports, we will describe the facilitators and barriers of the implementation of video-conferencing PACT.

The data will be collected through semistructured interview and will be analysed with the classical technique of Interpretative Phenomenological Analysis.<sup>36</sup> Population selection will follow the rules of the purposive sampling and will allow a maximal variation of the sample.<sup>37</sup> An estimation of 30–60 parents will be necessary to reach

data saturation based on previous studies.<sup>38–40</sup> The total number of therapists (around 7–8) will be interviewed. During the 40–60 min interview, we will explore the barriers and facilitators to implementing PACT by videoconferencing. A guide for the interview will be elaborated in the initial phase of the project based on first interviews. Interviews will be recorded and transcribed before analyses.

Data from the quantitative and qualitative sources in the process evaluation will be analysed separately. The results of the qualitative study will be integrated with the quantitative results to optimise the findings.<sup>41</sup>

### Monitoring

M-MG (IP) investigators associated, methodologists, statistician, parent representatives and associate researcher composed the trial steering committee (TSC). The TSC is independent of sponsor and funders and have no

competing interests. The TSC has developed the study protocol and is responsible for data collection, management, publications and the final data set.

The coordinating centre is independent from the centres for investigation.

According to the French law, the study requires formal data monitoring undertaken by the sponsor. Annual reporting will be completed and submitted to the funders.

### Adverse events

Based on results from previous PACT intervention trials, no specific harm from trial participation is anticipated. However, as required by the French law, adverse events will be collected throughout the study and reported in the eCRF section. Description of the event, date of occurrence, intensity, severity, accountability will be reported. Outcomes of this event and action taken after its report will also be concealed.

We anticipate that the early assessment, follow-up consultation on ASD and its management will help and support both groups during the postdiagnosis period. Hence, no post-trial care is planned.

### Trial status

The trial status is currently Recruiting. The study has started the 30 June 30, 2020. The anticipated end date will be 30 June 2023.

Figure 3 shows WHO trial registration data set. Online supplemental appendix 3 shows Standard Protocol Items: Recommendations for Interventional Trials Checklist.

### Ethics and dissemination

This study (protocol V.5, date: 25 October 2019) is approved by the French National Review Board (reference No 2018-A02516-49). The results will be disseminated via peer-reviewed journals. It will also disseminate via national and international, general and specialist meeting and through the parent association (<https://Bleunetwork.fr>; <https://autisme-ambitionavenir.com>; <https://desailespourgrandir.org>). An individual feedback to the participant will be done through a regular newsletter. We will adhere to defined authorship criteria as per the International Committee of Medical Journal Editors.

### Author affiliations

<sup>1</sup>Academic department of Child and adolescent neurodevelopmental psychiatry, Hospital Centre Vinatier, Bron, France

<sup>2</sup>Research on Healthcare Performance (RESHAPE), INSERM U1290, Université Claude Bernard Lyon 1, Lyon, France

<sup>3</sup>Pôle de santé publique, Hospices Civils de Lyon, Lyon, France

<sup>4</sup>Child and Adolescent Psychiatry, Centre Hospitalier Charles Perrons, Bordeaux, France

<sup>5</sup>Service Universitaire de Psychiatrie de l'Enfant et de l'Adolescent, Centre de Ressources Autisme Midi-Pyrénées, University Hospital Centre Toulouse, Toulouse, France

<sup>6</sup>Service Universitaire de Psychiatrie de l'Enfant et de l'Adolescent, Centre Hospitalier de Versailles, Le Chesnay, France

<sup>7</sup>Center of resources in Autism and Center of Excellence in Autism and Neurodevelopment disorders, University Hospital Centre Montpellier, Montpellier, France

<sup>8</sup>USVQ, Inserm, CESP, "DevPsy", Paris-Saclay University, Villejuif, France

<sup>9</sup>Department of Child and Adolescent Psychiatry, Hopitaux universitaires de Strasbourg, Strasbourg, France

<sup>10</sup>CNRS UPR 3212 - Team 9, University of Strasbourg, Strasbourg, France

<sup>11</sup>Centre de Soins Psychothérapeutiques de Transition pour Adolescents, Argenteuil Health and Social Services Centre, Lachute, Quebec, Canada

<sup>12</sup>Centre of Research in Epidemiology and Statistics, ECSTRA Team UMR-1153, INSERM, Université de Paris, Paris, France

<sup>13</sup>The University of Manchester, Manchester, UK

<sup>14</sup>Division of Neuroscience and Experimental Psychology, Faculty of Biological Medical & Health Sciences, The University of Manchester, Manchester, UK

<sup>15</sup>Royal Manchester Children's Hospital, Manchester University NHS Foundation Trust, Manchester, UK

**Collaborators** Mrs Pauline Auphan (psychologist), Mrs Laetitia Bouveret (research assistant), Mrs Laurie Herman (research assistant), Dr Anne-Laure Touraille (PACT trainer), Mrs Lucie Jansen (PACT trainer), Dr Sandrine Sonié (CRA Lyon), Pr. Mario Speranza (CHU Versaille), Pr. Bruno Falissard (Paris), Pr Nicolas Georgieff (Lyon), Dr Matias Winter (HCL), Mrs Nadège Alloisio (parent association), Mr Chams-Ddine BELKHAYAT (parent association).

**Contributors** M-MG and ST, PO, LJ conceived and design the project, and M-MG is leading the coordination of the trial. M-MG, LJ and PO drafted the protocol and procured the project funding. LJ and M-MG are responsible for study implementation, staff training and supervision. PO, ST, AD and AZ contributed to the sample size calculation, the randomisation procedure and the statistical plan, and are responsible for data management, randomisation and statistical analysis. JG contributed to the protocol and paper writing. AR-L contributed to the protocol of the qualitative study. CA and NG to the PACT training and supervision of the team. M-MG, M-JO, LJ, AA, AJ, AB, CS, TM, TD are responsible for recruitment and evaluation of children. SG contributed to draft the paper. All authors critically reviewed and approved the final version of the manuscript.

**Funding** This study is supported by a grant from the Programme Hospitalier de Recherche Clinique inter-régional Rhône Alpes (PHRCI-15-065) from the AURA region and a grant by the Caisse Nationale de solidarité pour l'autonomie (CNSA) as part of the call for projects launched for IReSP (Institut de Recherche en Santé Publique) in 2016 in collaboration with the Institut national de la santé et de la recherche médicale (Inserm) (IReSP-17-Autisme3-16).

**Disclaimer** The funders and sponsor (CH le Vinatier, 95, boulevard Pinel, France) have no role in study design, data collection, management, data analysis and interpretation of data, in the writing of the report or in the decision to submit the manuscript for publication.

**Competing interests** None declared.

**Patient consent for publication** Not required.

**Provenance and peer review** Not commissioned; externally peer reviewed.

**Supplemental material** This content has been supplied by the author(s). It has not been vetted by BMJ Publishing Group Limited (BMJ) and may not have been peer-reviewed. Any opinions or recommendations discussed are solely those of the author(s) and are not endorsed by BMJ. BMJ disclaims all liability and responsibility arising from any reliance placed on the content. Where the content includes any translated material, BMJ does not warrant the accuracy and reliability of the translations (including but not limited to local regulations, clinical guidelines, terminology, drug names and drug dosages), and is not responsible for any error and/or omissions arising from translation and adaptation or otherwise.

**Open access** This is an open access article distributed in accordance with the Creative Commons Attribution Non Commercial (CC BY-NC 4.0) license, which permits others to distribute, remix, adapt, build upon this work non-commercially, and license their derivative works on different terms, provided the original work is properly cited, appropriate credit is given, any changes made indicated, and the use is non-commercial. See: <http://creativecommons.org/licenses/by-nc/4.0/>.

### ORCID iD

Marie-Maude Geoffroy <http://orcid.org/0000-0002-5528-3613>

### REFERENCES

- 1 Kogan MD, Vladutiu CJ, Schieve LA, *et al*. The prevalence of Parent-Reported autism spectrum disorder among US children. *Pediatrics* 2018;142:e20174161.

- 2 Lyall K, Croen L, Daniels J, *et al.* The changing epidemiology of autism spectrum disorders. *Annu Rev Public Health* 2017;38:81–102.
- 3 Baghdadli A, Miot S, Rattaz C, *et al.* Investigating the natural history and prognostic factors of ASD in children: the multicentric Longitudinal study of childREN with ASD - the ELENA study protocol. *BMJ Open* 2019;9:e026286.
- 4 Howlin P. Living with impairment: the effects on children of having an autistic sibling. *Child Care Health Dev* 1988;14:395–408.
- 5 Haute Autorité de Santé. Trouble du spectre de l'autisme Signes d'alerte, repérage, diagnostic et évaluation chez l'enfant et l'adolescent; 2018. [https://www.has-sante.fr/upload/docs/application/pdf/2018-02/trouble\\_du\\_spectre\\_de\\_lautisme\\_de\\_lenfant\\_et\\_ladolescent\\_recommandations.pdf](https://www.has-sante.fr/upload/docs/application/pdf/2018-02/trouble_du_spectre_de_lautisme_de_lenfant_et_ladolescent_recommandations.pdf)
- 6 Geoffroy M-M, Thevenet M, Georgieff N. News in early intervention in autism. *Psychiatr Danub* 2016;28:66–70.
- 7 Oono IP, Honey EJ, McConachie H. Parent-mediated early intervention for young children with autism spectrum disorders (ASD). *Evidence-Based Child Health: A Cochrane Review Journal* 2013;8:2380–479.
- 8 Zwaigenbaum L, Bauman ML, Choueiri R, *et al.* Early intervention for children with autism spectrum disorder under 3 years of age: recommendations for practice and research. *Pediatrics* 2015;136 Suppl 1:S60–81.
- 9 French L, Kennedy EMM. Annual research review: early intervention for infants and young children with, or at-risk of, autism spectrum disorder: a systematic review. *J Child Psychol Psychiatry* 2018;59:444–56.
- 10 Sandbank M, Bottema-Beutel K, Crowley S, *et al.* Project aim: autism intervention meta-analysis for studies of young children. *Psychol Bull* 2020;146:1–29.
- 11 Green J, Garg S. Annual research review: the state of autism intervention science: progress, target psychological and biological mechanisms and future prospects. *J Child Psychol Psychiatry* 2018;59:424–43.
- 12 Green J, Charman T, McConachie H, *et al.* Parent-mediated communication-focused treatment in children with autism (PACT): a randomised controlled trial. *Lancet* 2010;375:2152–60.
- 13 Pickles A, Le Couteur A, Leadbitter K, *et al.* Parent-mediated social communication therapy for young children with autism (PACT): long-term follow-up of a randomised controlled trial. *Lancet* 2016;388:2501–9.
- 14 Pickles A, Harris V, Green J, *et al.* Treatment mechanism in the MRC preschool autism communication trial: implications for study design and parent-focussed therapy for children. *J Child Psychol Psychiatry* 2015;56:162–70.
- 15 Vismara LA, McCormick CEB, Wagner AL, *et al.* Telehealth parent training in the early start Denver model: results from a randomized controlled study. *Focus Autism Other Dev Disabl* 2018;33:67–79.
- 16 Vismara LA, McCormick C, Young GS, *et al.* Preliminary findings of a telehealth approach to parent training in autism. *J Autism Dev Disord* 2013;43:2953–69.
- 17 Green J, Aldred C, Charman T, *et al.* Paediatric autism communication Therapy-Generalised (PACT-G) against treatment as usual for reducing symptom severity in young children with autism spectrum disorder: study protocol for a randomised controlled trial. *Trials* 2018;19:514.
- 18 Khan K, Hall CL, Davies EB, *et al.* The effectiveness of web-based interventions delivered to children and young people with neurodevelopmental disorders: systematic review and meta-analysis. *J Med Internet Res* 2019;21:e13478.
- 19 Bearss K, Burrell TL, Challa SA, *et al.* Feasibility of parent training via telehealth for children with autism spectrum disorder and disruptive behavior: a demonstration pilot. *J Autism Dev Disord* 2018;48:1020–30.
- 20 Richards DA, Bazeley P, Borglin G, *et al.* Integrating quantitative and qualitative data and findings when undertaking randomised controlled trials. *BMJ Open* 2019;9:e032081.
- 21 Fethers MD, Curry LA, Creswell JW. Achieving integration in mixed methods designs-principles and practices. *Health Serv Res* 2013;48:2134–56.
- 22 Kim SH, Thurm A, Shumway S, *et al.* Multisite study of new autism diagnostic interview-revised (ADI-R) algorithms for toddlers and young preschoolers. *J Autism Dev Disord* 2013;43:1527–38.
- 23 Mullen EM. *Mullen scales of early learning*. Minnesota: AGS Circle Pines, 1995.
- 24 Aldred C, Green J, Emsley R, *et al.* Brief report: mediation of treatment effect in a communication intervention for pre-school children with autism. *J Autism Dev Disord* 2012;42:447–54.
- 25 Dunn G, Emsley R, Liu H, *et al.* Evaluation and validation of social and psychological markers in randomised trials of complex interventions in mental health: a methodological research programme. *Health Technol Assess* 2015;19:1–116.
- 26 Gotham K, Pickles A, Lord C. Standardizing ADOS scores for a measure of severity in autism spectrum disorders. *J Autism Dev Disord* 2009;39:693–705.
- 27 Lord C, Risi S, Lambrecht L, *et al.* The autism diagnostic observation schedule-generic: a standard measure of social and communication deficits associated with the spectrum of autism. *J Autism Dev Disord* 2000;30:205–23.
- 28 McConachie H, Parr JR, Glod M, *et al.* Systematic review of tools to measure outcomes for young children with autism spectrum disorder. *Health Technol Assess* 2015;19:1–506.
- 29 American Psychiatric Association. *Diagnostic and statistical manual of mental disorders*. 5th ed. Washington DC: American Psychiatric Association, 2013.
- 30 Grzadzinski R, Carr T, Colomby C, *et al.* Measuring changes in social communication behaviors: preliminary development of the brief observation of social communication change (BOSCC). *J Autism Dev Disord* 2016;46:2464–79.
- 31 Bassano D, Labrell F, Bonnet P. Le Développement du langage de production en français (DLPF) entre 18 et 42 mois : une synthèse. *Enfance* 2020;2:151–74.
- 32 Sparrow SS, Cicchetti DV, Balla DA. *Vineland adaptive behavior scales* (VABS). London: NCS Pearson, 2005.
- 33 Leadbitter K, Aldred C, McConachie H, *et al.* The autism family experience questionnaire (AFEQ): an Ecologically-Valid, Parent-Nominated measure of family experience, quality of life and Prioritised outcomes for early intervention. *J Autism Dev Disord* 2018;48:1052–62.
- 34 Lacharité C, Éthier L. « Le stress parental chez les mères d'enfants d'âge préscolaire : validation et normes québécoises pour l'Inventaire de Stress Parental » Carl Lacharité. Louise Éthier et Christiane Piché 2013;17:183–203.
- 35 Pariente PD, Challita H, Mesbah M, *et al.* The GHQ-28 questionnaire in French: a validation survey in a panel of 158 General psychiatric patients. *European Psychiatry* 1992;7:15–20.
- 36 Smith JA, Shinebourne P. Interpretative phenomenological analysis. In: Cooper H, Camic PM, Long DL, *et al.*, eds. *APA Handbook of research methods in psychology, vol 2: research designs: quantitative, qualitative, neuropsychological, and biological*. Washington: American Psychological Association, 2012: 73–82.
- 37 Guba EG L. *Fourth generation evaluation*. Thousand Oaks, California: Sage Publications, Inc, 1989.
- 38 Lachal J, Speranza M, Taïeb O, *et al.* Qualitative research using photo-elicitation to explore the role of food in family relationships among obese adolescents. *Appetite* 2012;58:1099–105.
- 39 Gorse P, Nordon C, Rouillon F, *et al.* Subjective motives for requesting in-patient treatment in female with anorexia nervosa: a qualitative study. *PLoS One* 2013;8:e77757.
- 40 Morse JM. The significance of saturation. *Qual Health Res* 1995;5:147–9.
- 41 Richards DA, Bazeley P, Borglin G, *et al.* Integrating quantitative and qualitative data and findings when undertaking randomised controlled trials. *BMJ Open* 2019;9:e032081.