

1 **INTENSE NOCTURNAL WARMING ALTERS GROWTH STRATEGIES,**  
2 **COLORATION, AND PARASITE LOAD IN A DIURNAL LIZARD**

3 **A. Rutschmann<sup>1,2</sup>, A. Dupoué<sup>3</sup>, D. Miles<sup>1,4</sup>, R. Megía Palma<sup>5</sup>, C. Laudén<sup>1</sup>, M. Richard<sup>1</sup>,**  
4 **A. Badiane<sup>3</sup>, D. Rozen-Rechels<sup>3,6</sup>, M. Brevet<sup>1</sup>, P. Blaimont<sup>7</sup>, S. Meylan<sup>3</sup>, J. Clobert<sup>1</sup>, J.F.**  
5 **Le Galliard<sup>3,8</sup>**

6 **List of affiliation**

7 <sup>1</sup> Station d'Ecologie Théorique et Expérimentale (SETE), USR5321, CNRS, 09200, Moulis,  
8 FR

9 <sup>2</sup> School of Biological Sciences, University of Auckland, Auckland, NZ

10 <sup>3</sup> Sorbonne Université, Institut d'Ecologie et des Sciences de l'Environnement de Paris (iEES)-  
11 Paris, CNRS, IRD, INRA, 75252, Paris, FR

12 <sup>4</sup> Ohio University, Department of Biological Sciences, 131 Life Sciences Building, Athens, OH  
13 45701, USA ORCID 0000-0001-5768-179X

14 <sup>5</sup> CIBIO, InBIO – Research Network in Biodiversity and Evolutionary Biology, Universidade  
15 do Porto, Campus de Vairão, Rua Padre Armando Quintas, P-4485-661 Vairão, Portugal.

16 <sup>6</sup> La Rochelle Université, CNRS, Centre d'Études Biologiques de Chizé, 405 Route de Prissé  
17 la Charrière, 79360 Villiers-en-Bois, France

18 <sup>7</sup> Department of Biology, Rider University, 2083 Lawrenceville Road, Lawrenceville, New  
19 Jersey 08648 USA

20 <sup>8</sup> Centre de recherche en écologie expérimentale et prédictive (CEREPEP-Ecotron Ile De  
21 France), Département de biologie, Ecole normale supérieure, CNRS, PSL University, 77140  
22 Saint-Pierre-lès-Nemours, France

23

24 **Corresponding authors contact: A. Rutschmann – [alexis.rutschmann@gmail.com](mailto:alexis.rutschmann@gmail.com)**

25 **ABSTRACT**

26 1. In the past decades, nocturnal temperatures have been playing a disproportionate role in the  
27 global warming of the planet. Yet, they remain a neglected factor in studies assessing the impact  
28 of global warming on natural populations. In ectotherms, physiological performance is  
29 influenced by thermal conditions and an increase in body temperature by only 2°C is sufficient  
30 to induce a disproportionate increase in metabolic expenditure.

31 2. Here, we question whether an intense augmentation of nocturnal temperatures is beneficial  
32 or deleterious to ectotherms. Warmer nights may expand a species thermal niche and open new  
33 opportunities for prolonged activities and improve foraging efficiency. However, increased  
34 activity may also have deleterious effects on energy balance if exposure to warmer nights  
35 reduces resting periods and elevates resting metabolic rate.

36 3. We assessed whether warmer nights affected an individual's growth, dorsal skin colouration,  
37 thermoregulation behaviour, oxidative stress status and parasite load by exposing yearling  
38 common lizards (*Zootoca vivipara*) from four populations to either ambient or high nocturnal  
39 temperatures for approximately five weeks.

40 4. Warmer nocturnal temperatures increased the prevalence of ectoparasitic infestation and  
41 altered allocation of resources toward structural growth rather than storage. We found no  
42 change in markers for oxidative stress. The thermal treatment did not influence thermal  
43 preferences, but influenced dorsal skin brightness and luminance, in line with a predicted  
44 acclimation response in colder environments to enhance heat gain from solar radiation.

45 5. Altogether, our results highlight the importance of considering nocturnal warming as an  
46 independent factor affecting ectotherms life-history in the context of global climate change.

47

48 **Keywords:** coloration change; ectotherms; energetic balance; nocturnal temperatures;  
49 oxidative stress.

## 50 INTRODUCTION

51 Mean air temperature has been increasing in the past decades and is expected to continue  
52 increasing through 2100 (Allen et al., 2018). Yet, while most studies accentuated the role of  
53 diurnal temperatures ( $T_D$ ), historical records suggest that climate warming is driven by a faster  
54 increase of nocturnal temperatures ( $T_N$ ) (Vose, Easterling, & Gleason, 2005). Reasons  
55 underlying this asymmetry remain under debate, but include changes in global cloudiness,  
56 precipitation, soil moisture or in the thickness of the planetary boundary layer (Davy *et al.*,  
57 2017 and references therein). The escalation of  $T_N$  influences multiple aspects of terrestrial  
58 ecosystems' functioning (Gaston, 2019) by affecting vegetation maturation (Mu et al., 2015)  
59 and structure (Alward, Detling, & Milchunas, 1999), microbial activity (Palareti et al., 2016)  
60 community composition and food web dynamics (Barton & Schmitz, 2018; Ma, Le Lann, van  
61 Baaren, & Ma, 2020; Miller et al., 2017).

62 At present, little is known about the ecophysiological consequences of nocturnal warming  
63 on terrestrial animals. Most studies exploring the impacts of global warming are daytime-biased  
64 and focus on average warming, ignoring consideration of nocturnal ecology (Gaston, 2019). As  
65 a consequence, the daily partitioning of global warming effects between diurnal and nocturnal  
66 components has received scant attention, with the very notable exception of several studies  
67 emphasizing insects. For example, Kingsolver et al. (2015) demonstrated that an experimental  
68 increase in ambient temperature of 5°C during the night or day results in differential growth  
69 effects for tobacco hornworms (*Manduca sexta*). Other studies have suggested that a change in  
70 nocturnal temperatures should alter multiple traits in insects including metabolic expenditure,  
71 growth rates and developmental time (Colinet, Sinclair, Vernon, & Renault, 2015; Zhao, Zhang,  
72 Hoffmann, & Ma, 2014).

73 Physiological processes and behavioural activity of ectothermic species are directly  
74 influenced by the temperature of their environment (Seebacher & Franklin, 2005). For such

75 species, the relationship between metabolism, performance, or behavioural activity and body  
76 temperature often follows a right-skewed bell-shaped curve (Fig.1.a): the trait value gradually  
77 increases from the critical thermal minimum ( $CT_{min}$ ) up to the maximal performance at the  
78 thermal optimum ( $T_{opt}$ ), before experiencing a swift decrease toward the critical thermal  
79 maximum ( $CT_{max}$ ). Due to the shape of this curve, it is commonly assumed that increasing  
80 temperatures near  $CT_{min}$  may have a lower impact on metabolism, performance, or behavioural  
81 activity than increasing temperatures beyond  $T_{opt}$ , where the slope towards  $CT_{max}$  is steeper  
82 (Sinclair et al., 2016; Sunday et al., 2014). Yet, in critical traits involved in energy balance such  
83 as metabolism, temperature increments ranging between  $0.5^{\circ}C$  and  $2^{\circ}C$  have been  
84 demonstrated to cause a disproportionate increase in metabolic expenditure (respectively about  
85 +3% to about + 17%) (Dillon, Wang, & Huey, 2010). In diurnal species, the energy balance  
86 during daytime depends on individual's activity level and energy intake from foraging. At night,  
87 metabolic expenditure declines steadily and depends on ambient temperatures, because  
88 nocturnal thermoregulatory behaviour is often limited for diurnal species (Colinet et al., 2015).  
89 In this context, a warmer  $T_N$  that shifts the thermal conditions away from  $CT_{min}$  may thus  
90 substantially raise metabolic expenditure (Fig.1.b), with different consequences for an  
91 individual's energy balance.

92 Current assessments about the impacts of rising  $T_N$  on ectothermic species in the literature  
93 are rare but differ regarding the potential costs and benefits (Barton & Schmitz, 2018; Speights,  
94 Harmon, & Barton, 2017). Some studies demonstrate that higher  $T_N$  may open new temporal  
95 niches by, extending an individual's daily activity period (Clarke & Zani, 2012; Ziska, 2014),  
96 increasing the number of frost-free nights (Andrade, Krespi, Bonnardot, van Baaren, &  
97 Outreman, 2016), or altering activity towards night-time in environments where daily  
98 temperatures exceed  $CT_{max}$  (Lara Resendiz, 2019; Nordberg & Schwarzkopf, 2019). With  
99 increasing  $T_N$ , individuals may also benefit from an acceleration of development, that can lead

100 to earlier onset of reproduction (Speights et al., 2017) or enhanced immediate survival by  
101 improving the ability to escape predators (Burraco, Díaz-Paniagua, & Gomez-Mestre, 2017).  
102 However, if exposure to higher  $T_N$  is severe and long-lasting, one might also expect several  
103 negative effects. First, the short-term advantage provided by an extended period of activity can  
104 have long term costs as the supplementary energy expended overnight could disrupt an  
105 individual's energetic (e.g. fat reserve) and physiological (e.g. telomere lengths, oxidative  
106 stress) balance, which could decrease life expectancy (Alonso-Alvarez et al., 2006; Burraco,  
107 Orizaola, Monaghan, & Metcalfe, 2020; Metcalfe & Monaghan, 2001). Second, high  $T_N$  may  
108 have an instantaneous negative effect by affecting an individual's rest and recovery time (Bai,  
109 Ma, Cai, & Ma, 2019; Kayser, Yue, & Sehgal, 2014; Ma, Hoffmann, & Ma, 2015). For many  
110 species, low  $T_N$  constitutes a thermal refuge, where individuals recover from diurnal activity  
111 (Speights et al., 2017; Zhao et al., 2014). If this period of quiescence is compromised,  
112 individuals may not be able to recuperate from their diurnal activity, which may in turn have  
113 negative effects on their physiology, alter their daily behaviour and, if nocturnal warming is  
114 long enough, have negative repercussions on their stress levels and life cycle.

115 In this study, we investigated the functional responses of the common lizard (*Zootoca*  
116 *vivipara*) to an experimental increase in nocturnal temperatures. In the past decade, this species  
117 faced several heatwaves in the southern part of the distribution, sometimes leading to extreme  
118  $T_N$ . The common lizard is a cold-adapted specialist and recent studies highlighted that  
119 functional traits correlate with geographic differences in nocturnal temperatures across its  
120 southern range. For example, the nocturnal temperatures of local populations correlate with  
121 individual physiological strategies, including heating rate (Rutschmann et al., 2020), baseline  
122 corticosterone level (Dupoué et al., 2016) or water balance strategy (Dupoué, Rutschmann, Le  
123 Galliard, Miles, et al., 2017). More concerning results point out that warmer nocturnal  
124 temperatures also correlate with faster erosion of telomeres early in life and population decline,

125 and therefore with a higher “stress level” of individuals and populations (Dupoué, Rutschmann,  
126 Le Galliard, Clobert, et al., 2017). Yet, a mechanistic understanding of the biological impact of  
127  $T_N$  remains lacking. To better assess the consequences of warmer nights, we studied the  
128 response of yearling common lizards to an intense increase in nocturnal temperatures. We  
129 exposed individuals to two nocturnal thermal treatments over a period of 38 days. A control  
130 treatment simulated  $T_N$  close to the common lizard’s lower limit of activity, whereas lizards in  
131 the treatment group experienced an increase in  $T_N$ , matching extreme temperatures recorded  
132 overnight in natural populations. Both groups experienced similar ambient temperature  
133 conditions during the day. We predicted that warmer  $T_N$  should increase metabolic expenditure  
134 and individual growth rate, which may trigger a trade-off with other physiological and  
135 metabolic functions. To test this prediction, we therefore compared several functional traits  
136 before and after treatment.

137 We predicted individuals from the warmer treatment to grow faster as a direct  
138 consequence of a higher assimilation rate (Bestion, Teyssier, Richard, Clobert, & Cote, 2015;  
139 Dupoué, Rutschmann, Le Galliard, Clobert, et al., 2017). In addition, we expected enhanced  
140 growth rates to incur a cost to other morphological traits such as body mass or fat reserve, which  
141 may lead to elevated physiological stress (Dupoué, Rutschmann, Le Galliard, Clobert, et al.,  
142 2017). To verify this second prediction, we quantified the balance between oxidative damage  
143 and antioxidant defences (i.e., oxidative stress) (Costantini, 2014; Metcalfe & Monaghan, 2001;  
144 Monaghan, Metcalfe, & Torres, 2009). If exposure to warmer nocturnal temperatures induced  
145 a stress response, then we also predicted an increased susceptibility to parasitic infestation due  
146 to the immunosuppressive effect of stress (Harvell et al., 2002). Finally, we tested if and how  
147 lizards could buffer the physiological costs of increased nocturnal temperatures by selecting  
148 cooler body temperatures during the day (Angilletta, Cooper, Schuler, & Boyles, 2002) and by

149 developing a lighter colouration that reduces heat gain during daytime (thermal melanism  
150 hypothesis, Clusella Trullas, van Wyk, & Spotila, 2007).

## 151 **METHODS**

### 152 *Study species and populations*

153 The common lizard (*Z. vivipara*) is a small-sized species in the family Lacertidae whose  
154 distribution encompasses Northern Europe and Asia. In the study populations, lizards emerge  
155 in spring from winter hibernation to grow and reproduce over summer. The population structure  
156 consists of juveniles (born in the summer), yearlings (non-reproductive one-year old  
157 individuals) and adults (two-year-old individuals or older). We focused on yearling males,  
158 because they exhibit the highest growth rate during the activity season. We sampled individuals  
159 from four populations (ca. 20 lizards per populations, total n=78), located in the Massif Central,  
160 France (Table 1) and brought them back to the laboratory. Populations were selected based on  
161 their similarity in diurnal and nocturnal thermal characteristics. Yet, significant differences  
162 existed between populations, notably when comparing extreme temperatures recorded  
163 overnight (97.5% upper quantile of the distribution of nocturnal temperatures; see table 1,  
164 Fig.2.a-b and Appendix 1). To control for these differences, and detect patterns related to them,  
165 population identity was always included in our models as a fixed effect.

### 166 *Thermal conditions*

167 Each lizard was housed individually in a plastic terrarium (11x18x11cm) containing a  
168 cardboard shelter and a substrate of sterilized soil. Terraria were misted four times a day.  
169 Lizards were allowed to bask under a 25W bulb for six hours a day. Every second day, lizards  
170 were fed live crickets, maggots or mealworms *ad libitum*. Lizards were randomly divided into  
171 two thermal treatments. During the day, all lizards were held in a common room under the same  
172 thermal conditions. Every evening between 17:30 and 18:30, lizards in the control group ( $T_{Nc}$ )  
173 were transferred to a room tracking ambient temperature. Lizards in the warm nocturnal  
174 temperature treatment ( $T_{Nw}$ ) were transferred to a room maintained at higher nocturnal

175 temperatures. Every morning between 8:00 and 8:30, lizards were returned to the main room  
176 (See Fig.2c and Appendix 1). All terraria were randomly allocated on the shelves every morning  
177 and evening. Note that we matched individuals for size and mass between treatment groups to  
178 eliminate potential bias toward heavier or longer individuals in one treatment (See Appendix 2  
179 and Fig.S4.).

180 In each treatment, two iButtons (Thermochron<sup>®</sup>, Maxim Integrated Products, Sunnyvale,  
181 CA, USA) were buried in two different terraria to estimate thermal conditions experienced by  
182 the lizards. Temperatures were recorded every hour during the experimental period.  
183 Temperatures in  $T_{Nw}$  were chosen to reflect the extreme nocturnal temperatures recorded in  
184 natural populations (Table 1), simulating the potential effect of global warming. Temperatures  
185 in  $T_{Nc}$  were chosen to be near the lower limit for activity for the common lizard that is around  
186 an air temperature of 17-20 °C (average temperature in  $T_{Nc} = 17.8 \pm 0.7^{\circ}\text{C}$  and  $T_{Nw} = 24.6 \pm$   
187  $0.9^{\circ}\text{C}$ ;  $t_{1195.7} = 145.65$ ,  $p < 0.005$ ) (Rozen-Rechels et al., 2020).

### 188 *Timing of the experiment*

189 All measurements described in the next sections were performed twice, before and after the  
190 five-week (38 days) treatment. For each lizard and for each trait  $i$ , a differential  $\Delta_i$  was  
191 calculated as the difference between post- and pre-treatment measurements (e.g.,  $\Delta_{SVL} = SVL$   
192 post-treatment – SVL pre-treatment). A period of 38 days was chosen to mirror the typical  
193 duration of summer heat waves in the Massif Central region (personal observations). It also  
194 covers approximately 25% of the summer activity (May to September) for common lizards and  
195 corresponds to a period of rapid growth for young lizards. Thus, this duration was sufficient to  
196 detect differences in individual growth rates and observable changes in oxidative balance  
197 (Dupoué, Angelier, et al., 2020). Lizards were fasted between the day of capture and the end of  
198 the first set of measurements (two days). Measurements were taken in the following order after  
199 capture: 1. ectoparasite removal, 2. morphological measurements, 3 digital scanning for color



200 analysis, 3. preferred body temperature, and 4. blood sampling. All lizards were fed after blood  
201 sampling. We fasted lizards for two days prior to the second run of measurements. All  
202 individuals were released to their site of capture. See Appendix 3 for a timeline of the  
203 experimental design.

#### 204 ***Morphological measurements***

205 We measured snout to vent length (SVL, mean  $\pm$  SD =  $40.2 \pm 2.5$  mm), body length (= SVL +  
206 tail length: BL =  $93.6 \pm 13.4$  mm) and body mass (BM =  $1.31 \pm 0.25$  g). We estimated tail's  
207 volume (TV =  $331.1 \pm 76.7$  mm<sup>3</sup>) as an index of fat reserves (Avery, 1974) and muscular state  
208 (see Appendix 4 for more details). We also calculated an index of body condition (BC) as the  
209 residuals of a linear regression relating BL and BM (Richard, Massot, Clobert, & Meylan,  
210 2012).

#### 211 ***Colour measurements***

212 Pre- and post-treatment dorsal images of yearlings were obtained with a high-resolution digital  
213 scanner (Canon<sup>®</sup>, CanoScan Lide 110; image size: 2550x2600 pixels). Each scan was cropped  
214 to the area of interest (i.e., dorsal section, see Fig.S6) and the background was removed. We  
215 analysed two aspects of colour variation with the *colordistance* R package (Weller, 2019), as  
216 described in Appendix 5. Briefly, we focused first on the luminance of each dorsal section and  
217 calculated the distance between the luminance before and after treatment ( $\Delta$ LUM). Second, we  
218 estimated the change in colouration by quantifying the variation in colour composition by  
219 extracting the predominant colours in all pictures (pre-and post-treatment pictures grouped  
220 together; four colours were selected: COL\_1 to COL\_4; Fig.4.a; Fig.S8). Then, we evaluated  
221 their relative abundance for each individual, before and after the treatment, to calculate four  
222 colouration distances ( $\Delta$ COL\_1 to  $\Delta$ COL\_4). Colours can be classified from the darker to the lighter  
223 one (position on the spectral range) as follows: COL\_1 (HEX Code: #41362E), COL\_2  
224 (#604B40), COL\_3 (#6E5F4C) and COL\_4 (#7E7167).

225 ***Thermoregulatory behaviour***

226 The preferred temperature  $T_{\text{pref}}$  is defined as the range of body temperatures selected by an  
227 ectotherm in a cost-free environment (Angilletta et al., 2002; Hertz, Huey, & Stevenson, 1993).  
228 We measured  $T_{\text{pref}}$  using ten plastic tracks (120 x 25 x 20 cm) lined with a substrate of sterile  
229 soil. In each track, we created a thermal gradient by heating one side with a 60W incandescent  
230 bulb ( $39.4 \pm 4.02$  °C) while the cool side was maintained at ambient temperature ( $23.7 \pm 2.7$   
231 °C). Two UVB 30W fluorescent lamps positioned over each track provided uniform  
232 illumination with white light to avoid a potential effect of a luminance gradient. Thermal  
233 gradient tracks were heated at least 45 minutes prior to each experiment. We assigned a lizard  
234 to each track at random and allowed them to thermoregulate for 80 minutes after 10 minutes of  
235 acclimation. We recorded the back-surface temperature of each lizard as a proxy of body  
236 temperature (Rutschmann et al., 2020). Measurements were repeated every 10 minutes (9  
237 values per individual), with an infrared thermometer (Raytek, Raynger MX2; distance-to-spot  
238 ratio is 60:1) and with minimal disturbance. The distance of detection (300mm) was calibrated  
239 between all measures according to the manufacturer recommendations for a spot diameter of 6  
240 mm.

241 ***Oxidative status***

242 Oxidative status was assessed using two blood markers. Lizards were bled (60  $\mu$ L whole blood)  
243 from the post-orbital sinus at days 0 and 39. Samples were immediately centrifuged for 5  
244 minutes at 13,500 rpm to separate plasma and blood cells and kept frozen at -28°C in airtight  
245 tubes until analyses. Plasma concentration of reactive oxygen metabolites (ROM) and non-  
246 enzymatic antioxidant capacity (OXY) were used as indices of oxidative damage and defences,  
247 respectively. We followed a protocol developed for this species (Josserand et al., 2020). ROM  
248 concentration was measured with the d-ROMs test (MC003, Diacron International, Italy). This  
249 test measures the oxidative capacity of a plasma sample in relation to the activity of organic

250 hydroperoxides (biomolecules damaged by free radicals, Costantini, 2016). The antioxidant  
251 capacity of the plasma was assessed with the OXY-absorbent kit (MC435, Diacron  
252 International, Italy). This test measures the ability of plasma to buffer an oxidant attack of  
253 hypochlorous acid (Costantini, Marasco, & Møller, 2011). Samples for d-ROMs were read at  
254 540nm after 75min of incubation at 37°C. Samples for OXY were read at 540nm after 10  
255 minutes of incubation at 37°C. Plates were randomised by population, treatment and timing  
256 (pre- vs post-). We measured ROM and OXY using two plates, so we repeated 14 samples to  
257 estimate the coefficient of variation both within (intraplate; ROM: 8.86%, OXY: 1.02%) and  
258 between plates (inter-plate; ROM: 9.19%, OXY: 2.05%).

### 259 ***Parasite load***

260 Ecto- and endo-parasite load was estimated for each individual. The day of capture, all  
261 individuals were examined for mites (genus *Ophionyssus*). All parasites were hand removed  
262 with tweezers and the lizard treated with an antiparasitic solution of 0.29% fipronil (Frontline  
263 Spray™). Twenty days later, we checked for the presence of mites to avoid infestation in the  
264 laboratory. We took advantage of this opportunity to once again categorize lizards for presence  
265 or absence of ectoparasites (EctoP = 0 or 1). We also took advantage of blood sampling to test  
266 for the presence of blood parasites (BloodP, *Karyolysus spp.*, RM-P, personal observation)  
267 before and after treatment. When individuals were bled, a drop of blood was smeared on a slide  
268 whenever blood flow was sufficient. Blood was fixed with 100% methanol for 5 minutes and  
269 stained for 40 minutes with a 10% solution of Giemsa stain (azur-eosin methylene). BloodP  
270 were counted under a Leica Microsystems DMLB microscope at 1000x magnification. A total  
271 of 2,000 blood cells per blood smear were screened following Megía-Palma *et al.* (2018).

### 272 **Statistics**

273 All statistics were performed using R software (R core Team, 2020, v. 3.2.0). All differences  
274 between post- and pre-treatment measures ( $\Delta$ ) were analysed using linear models, with the

275 exception of ecto- and blood-parasite loads that were analysed using Generalised Linear Model  
276 and Generalised Linear Mixed Model respectively (see dedicated section).

277 *Morphology* - The difference ( $\Delta_i$ ) for each morphological trait  $i$ , was analysed with a Gaussian  
278 linear model. We included temperature treatment and population of origin as fixed effects. The  
279 initial value of the morphological trait ( $i_{initial}$ ) was entered as a covariate. We also included the  
280 interaction between treatment and population.

281 *Colouration* - The luminance differential ( $\Delta_{LUM}$ ) was analysed with a Gaussian linear model,  
282 including population of origin, temperature treatment, initial luminance and the interaction  
283 between treatment and population as fixed effects. We used four linear models to test whether  
284 the four most represented dorsal colours changed during the experimental treatment ( $\Delta_{COL\_1}$  to  
285  $\Delta_{COL\_4}$ ). Two lizards were discarded from the analyses, because their images revealed moult  
286 residuals, affecting their colouration.

287 *Thermal preferences* – We used a linear mixed-effects model to analyse  $T_{pref}$ . For each  
288 individual, we estimated  $\Delta_{T_{pref}}$  as the difference between the mean body temperature calculated  
289 over the post-experimental run and the mean body temperature calculated over the pre-  
290 experimental run. In the fixed part of the model, we included initial  $T_{pref}$ , population of origin  
291 and experimental treatment. We also included the interaction between the population of origin  
292 and treatment. The identity of the experimental arena was added as a random effect to capture  
293 the variance between the ten thermal arenas used repeatedly in the experimental setup.

294 *Oxidative status* – We used a Gaussian linear model to test whether changes in ROMs ( $\Delta_{ROM}$ )  
295 and in OXY ( $\Delta_{OXY}$ ) were impacted by the experimental design, the population of origin, the  
296 initial values of ROMs (or OXY) and the interaction between the treatment and the population  
297 of origin.

298 *Parasite load* – Ectoparasite presence (EctoP) was examined using a generalized linear model  
299 (GLM) with a binomial distribution. Initial state of parasitism (presence/absence), population

300 of origin and treatment (and their interaction) were included as predictor variables.  
301 Unfortunately, some individuals were more difficult to bleed than others before or after the  
302 treatment notably because of small body size, but also because of individuals' level of  
303 hydration, body temperature and person in charge. Yet, despite standardized before blood  
304 sampling to avoid any bias, we were not able to collect blood to assess *BloodP* for all individuals  
305 (N pre-treatment warm= 25, control= 25; N post-treatment warm= 35, control= 34).  
306 Consequently, it was not possible to analyse the difference in *BloodP* load, since some  
307 individuals in the post-treatment sample were not included in the in the pre-treatment sample,  
308 and *vice versa*. *BloodP* exhibited an excess number of zeros, so we used a generalized linear  
309 mixed model, with a zero-inflated Poisson distribution (GLMMadaptive package; Dimitris  
310 Rizopoulos, 2020). Population, timing (pre-vs post-treatment) and treatment, as well as the  
311 interactions between timing and treatment and population and treatment were included as fixed  
312 terms in the model. We included individual identity as a random effect.

313 **Initial values** – We screened for potential differences between experimental groups at the onset  
314 of the experiment for all measurements. Except for ROM ( $1.27 \pm 0.41$ ,  $p = 0.003$ ), we found no  
315 difference between treatment for initial values (all  $p > 0.07$ ). The difference in ROM was driven  
316 by five individuals, all assigned in T<sub>Nw</sub>, exhibiting extreme high values. These high initial  
317 values of ROM were uncorrelated with any of other traits studied here and therefore individuals  
318 were retained in our analyses (See Appendix 6 for more information).

319

## 320 **RESULTS**

321 Complete summary tables for all traits are available in Appendix 7.

322 **Morphology** -  $\Delta_{SVL}$  was positively influenced by the warmer treatment (i.e., higher growth; Fig.  
323 3a;  $0.59 \pm 0.25$ ,  $t = 2.38$ ,  $p = 0.02$ ). In contrast,  $\Delta_{MASS}$  was not impacted by the experimental  
324 treatment (Fig. 3b;  $p$ -value= 0.84). Change in body condition  $\Delta_{BC}$  was negatively influenced by

325 warmer nocturnal temperatures (Fig. 3c;  $-0.07 \pm 0.02$ ,  $t = -3.01$ ,  $p = 0.003$ ). Finally,  $\Delta_{TAIL}$  was  
326 negatively influenced by  $T_{Nw}$  (Fig. 3d;  $-26.6 \pm 9.48$ ;  $t = -2.8$ ;  $p = 0.006$ ). All morphological  
327 differences were negatively impacted by the initial measurement (all p-values  $<0.007$ ). Neither  
328 the population of origin (all p-value  $> 0.12$ ), nor the interaction between treatment and  
329 population (all p-values  $> 0.06$ ) had an effect on morphological differences.

330 **Colouration**  $\Delta_{LUM}$  was significantly higher in  $T_{Nw}$  ( $3.43 \pm 1.64$ ;  $t = 2.1$ ;  $p = 0.04$ ) in all but one  
331 population (Bouvier), as indicated by the significant interaction between population and  
332 treatment (Fig. 4b;  $-5.53 \pm 2.25$ ;  $t = -2.259$ ;  $p = 0.02$ ; all other  $p > 0.58$ ). Initial luminance had  
333 a negative correlation with  $\Delta_{LUM}$  ( $-0.79 \pm 0.12$ ;  $t = -6.46$ ;  $p < 0.005$ ). Regarding colouration  
334 ( $\Delta_{COL}$ ; Fig.4c), three out of the four dominant colours were significantly affected by  $T_{Nw}$ . The  
335 proportion of the darkest colour ( $\Delta_{COL\_1}$ ; #41362E) declined in all populations ( $-0.14 \pm 0.06$ ;  $t$   
336  $= -2.34$ ;  $p < 0.02$ ), except in Bouvier where an opposite and significant difference was observed  
337 ( $0.19 \pm 0.03$ ;  $t = -2.48$ ;  $p < 0.015$ ; all other  $p > 0.45$ ). In all populations, the proportion of  
338 COL\_2 ( $\Delta_{COL\_2}$ ; #604B40) increased in  $T_{Nw}$  ( $0.02 \pm 0.01$ ;  $t = 2.07$ ;  $p = 0.04$ ), and particularly  
339 in Col du Pendu ( $0.03 \pm 0.01$ ;  $t = 2.1$ ;  $p = 0.03$ , all other  $p > 0.6$ ).  $\Delta_{COL\_3}$  (#6E5F4C) was  
340 unaffected by the treatment ( $-0.05 \pm 0.02$ ,  $t = 1.63$ ,  $p = 0.11$ ) except for Bouvier, where it  
341 increased significantly in  $T_{Nc}$  ( $-0.05 \pm 0.02$ ,  $t = -2.15$ ,  $p = 0.03$ ). The proportion of COL\_4  
342 (#7E7167) was positively affected by  $T_{Nw}$  for all populations ( $0.04 \pm 0.02$ ;  $t = 2.24$ ;  $p = 0.03$ ).  
343 All  $\Delta_{COL}$  were negatively affected by the initial proportion of colouration (all  $p < 0.005$ ).

344 **Thermal preferences** - We found no effect of nocturnal temperatures on  $\Delta T_{pref}$  ( $-0.001 \pm 0.19$ ,  
345  $t=0.32$ ,  $p = 0.99$ ; Fig.S.10). Yet, on average, individuals favoured warmer temperatures during  
346 the second measurement after controlling for a negative correlation with initial  $T_{pref}$  ( $-0.81 \pm$   
347  $0.07$ ,  $t=-10.88$ ,  $p < 0.005$ ). We found no influence of population (all p-value  $> 0.07$ ).

348 **Oxidative status** - Both  $\Delta_{ROM}$  and  $\Delta_{OXY}$  were negatively influenced by the initial levels of  
349 ROMs and OXY (ROMs:  $-1.02 \pm 0.07$ ,  $t = -14.26$ ,  $p < 0.005$ ; OXY:  $-1.00 \pm 0.02$ ,  $t = -59.01$ ,  $p$

350 < 0.005). We did not detect any effect of treatment on  $\Delta_{\text{ROM}}$  and  $\Delta_{\text{OXY}}$  (See Fig.S.11;  $p > 0.20$ ),  
351 of the population of origin (all  $p > 0.14$ ) nor of the interaction between the population of origin  
352 and the treatment (all  $p > 0.11$ ).

353 **Parasitic Load** - Ectoparasitic infestation (**EctoP**) was influenced by the experimental treatment  
354 (Fig. 5a;  $1.63 \pm 0.55$ ,  $z = 2.97$ ,  $p = 0.003$ ) but not by the initial presence of ectoparasites ( $p$ -  
355 value = 0.19). **EctoP** did not differ among populations (all  $p > 0.30$ ). Blood parasite load  
356 (**BloodP**) did not change due to the treatment (zero-inflation model, interaction between  
357 treatment and time:  $p$ -value = 0.72). **BloodP** also did not differ between treatments (Fig. 5b;  
358 count model, interaction between treatment and time:  $p$ -value = 0.84). Yet, individuals from  
359 Bouvier showed a lower rate of infection in  $T_{\text{Nw}}$  ( $-1.61 \pm 0.68$ ,  $z$ -value =  $-2.35$ ,  $p$ -value = 0.02).

360

## 361 DISCUSSION

362 After five weeks of exposure to manipulated, high nocturnal temperatures, without changes in  
363 diurnal conditions, we found significant alterations in morphology, colouration and rate of  
364 infestation by ectoparasites in yearlings of the common lizard, *Z. vivipara*. We did not detect  
365 an effect of treatment on thermal preferences, infection rate by blood parasites, or oxidative  
366 stress status.

367 ***Intense nocturnal warming drives allocation of energy toward structural growth rather than***  
368 ***storage.***

369 In all populations, exposure to high warm nocturnal temperatures had a positive influence on  
370 the growth in body length (SVL), with lizards from  $T_{\text{Nw}}$  growing 20% faster on average  
371 compared to controls. These results corroborate similar patterns from previous studies on the  
372 same species in which juvenile common lizards exhibited enhanced growth rates in body size  
373 when exposed to elevated daily temperatures (Bestion et al., 2015; Chamaille-Jammes, Massot,  
374 Aragon, & Clobert, 2006). Comparable effects of  $T_{\text{N}}$  have also been described for other  
375 ectothermic species, with warmer  $T_{\text{N}}$  accelerating egg, larval or pupal development in several

376 insect species (Speights & Barton, 2019; Whitney-Johnson, Thompson, & Hon, 2005; Wu, Hao,  
377 Sun, & Kang, 2012). However, to the best of our knowledge, this study is the first to show that  
378 warmer  $T_N$  can have a direct, positive effect on a lizard growth rate.

379         Faster body growth may be attributable to higher energy acquisition or higher allocation  
380 towards structural growth during warmer nights or both (Speights et al., 2017). Yet, if not  
381 compensated by higher caloric intake, higher energetic expenditure during warmer nights may  
382 require rapid functional adjustments, including depletion of energetic reserves (Dillon et al.,  
383 2010; Huey & Kingsolver, 2019). Despite lizards having unrestricted access to food and water  
384 in captivity, our results indicate that faster growth rate triggered a potential trade-off with other  
385 key morphological traits. First, body mass did not differ between treatments. Consequently,  
386 yearlings grew faster in  $T_{Nw}$  but showed lower post-treatment body condition. In addition,  
387 lizards in  $T_{Nw}$  had a reduced tail volume compared to controls. Tail volume in lizards is a  
388 reliable proxy of reserves available to respond to energetic or hydric stress, by metabolizing fat  
389 or proteins, respectively (Bateman & Fleming, 2009; Bruschi, Lourda, Kaminsky, & DeNardo,  
390 2018). We therefore hypothesize that the nocturnal treatment initiated two distinct strategies  
391 resulting from a plastic allocation of energy toward structural growth versus storage.  
392 Individuals from  $T_{Nw}$  expended more available energy to compensate for increased metabolic  
393 activity, whereas individuals from  $T_{Nc}$  built-up reserves for future needs.

394         It is interesting to note here that lizards were fed *ad libitum* and provided with a constant  
395 supply of water. We did not record potential differences in food consumption between  
396 treatments, however, recent unpublished data (Brusch et al., pers. comm.) suggest that warmer  
397 conditions over night increase food consumption rates in adult female common lizards. This  
398 suggests that yearling common lizards were probably eating more in the warm nocturnal  
399 treatment group because food was not a limiting factor. All else being equal, the potential food  
400 limitation occurring in a natural population should therefore exacerbate the ‘trade-off’ between



401 structural and reserve growth effect mediated by  $T_N$  observed in our experiment. In other words,  
402 the trade-off should be stronger when food availability becomes a limiting factor and lizards  
403 cannot increase their food intake as they could in the laboratory conditions. Ultimately, this  
404 mechanism could alter food webs, as already observed in different studies (Speights & Barton,  
405 2019). The potential for warmer temperatures to alter patterns of energy allocation challenges  
406 assumptions about the optimal energy budget for common lizards prior to sexual maturation, as  
407 modelled in González-Suárez, Le Galliard and Claessen (2011). Their model compared a net  
408 allocation scenario and a net production one. In the net allocation model, yearlings first assigned  
409 a fixed proportion of energy to reproduction, the remainder being paid to maintenance and  
410 growth, respectively. Alternatively, in the net production model, maintenance is paid first, and  
411 the remainder is assigned to growth and reproduction, proportionally. In contrast, our results  
412 suggest fluctuating allocation rules towards growth, reserves and future reproduction that vary  
413 with environmental temperatures, hence a potential a change in the assimilation and allocation  
414 rules as well. Further work, also including females, would help to disentangle the effect of  $T_N$   
415 on male versus female' reproduction allocation strategies.

416         Assessing which pace of life strategy (faster growth with a lower condition vs slower  
417 growth with a higher condition) yields a higher life-time fitness advantage is difficult, as  
418 differential growth early in life may have important long-term effects (Metcalf, Monaghan and  
419 Metcalfe, 2001). There are multiple fitness advantages for early growth and warmer  
420 temperatures on current and future reproduction (Horváthová et al., 2013; Sears, 2005). For  
421 example, experimental acceleration of growth in juvenile common lizards has been  
422 demonstrated to favour rapid sexual maturation and earlier reproduction (Bestion et al., 2015).  
423 Furthermore, reproduction is known to be size-dependent in reptiles, with larger females often  
424 producing larger clutches or litters (Le Galliard, Clobert, & Ferrière, 2004). However, rapid  
425 growth early in life may compromise the accumulation of energy reserves (this study), and lead

426 to lower survival of individuals with reduced energy reserves, as well as the ability invest into  
427 reproduction later in their life (Bestion et al., 2015; Dupoué, Rutschmann, Le Galliard, Clobert,  
428 et al., 2017).

#### 429 *Impacts of a faster growth on oxidative balance and parasitic susceptibility*

430 One option to assess whether effects of accelerated growth are deleterious is to measure  
431 individual stress levels, by quantifying their oxidative balance (Costantini, 2014; Salin et al.,  
432 2015). Contrary to our prediction, we did not find any changes in oxidative status attributable  
433 to the thermal treatment. In fact, oxidative damages showed a slight decrease in both treatments  
434 ( $\Delta_{\text{ROM}} = -0.2 \pm 2.2$ ) while the antioxidant capacity of the plasma increased in both treatments  
435 ( $\Delta_{\text{OXY}} = 10.3 \pm 40.7$ ). One potential explanation is that despite the difference in  $T_N$ , general  
436 laboratory conditions were benign with respect to the risks of oxidative stress. Common lizard  
437 populations characterized by higher  $T_N$  exhibit lower levels of oxidative stress in the field,  
438 which suggests that warmer environmental conditions may not necessarily challenge oxidative  
439 balance regulation in this species (Dupoué, Blaimont, et al., 2020). Similar reduction of  
440 oxidative damage has been observed in the corn snake (*Pantherophis guttatus*) after a simulated  
441 heat wave (Stahlschmidt, French, Ahn, Webb, & Butler, 2017). Yet, faster growth rate is  
442 correlated with increased oxidative stress across many species (Metcalf & Monaghan, 2001;  
443 Monaghan et al., 2009; Salin et al., 2015). Here, we found no correlation between individual  
444 growth rate and  $\Delta_{\text{ROM}}$  ( $r = 0.003$ ;  $t_{71} = 0.03$ ,  $p = 0.97$ ) or  $\Delta_{\text{OXY}}$  ( $r = 0.07$ ;  $t_{71} = 0.62$ ,  $p = 0.53$ ). A full  
445 assessment of whether or not warmer nights induce an increase in cellular stress might require  
446 further analyses including multiple markers of oxidative stress (Stier et al., 2017). Moreover,  
447 frequent sampling for the signature of oxidative stress and over a longer duration would enhance  
448 the ability to characterize the dynamics of oxidative damage over time (Dupoué, Angelier, et  
449 al., 2020).

450 Our results also showed that increased  $T_N$  can have immediate effects on susceptibility to  
451 parasite infestation. We did not detect any statistical difference between treatments regarding  
452 blood parasites. However, we found clear evidence that individuals from  $T_{Nw}$  were more  
453 vulnerable to an ectoparasitic infestation. The provenance of mites re-infesting individuals is  
454 questionable. Even if we hand removed and applied an antiparasitic treatment, it is possible that  
455 some mites survived and re-infected individuals during captivity. It is also possible that mites  
456 survived the sterilisation of the soil used as substrate in each terrarium. In our study, we did not  
457 detect an influence of mites on SVL or body mass (Appendix 7), but we removed parasites from  
458 individuals before deleterious effects could become obvious. In wild populations,  
459 hematophagous mites are known to influence common lizards' mass and/or survival (Sorci &  
460 Clobert, 1995) and could represent a serious burden for infected yearlings. It is difficult,  
461 however, to determine whether the increased parasitic infestation in the warmer nocturnal  
462 treatment is the result of a weakened immune response, a consequence of an extended period  
463 of activity of lizards, or the by-product of a favourable environment for ectoparasite  
464 reproduction.

#### 465 *Behavioural and colour adjustment to warmer nocturnal temperatures*

466 Behavioural adjustments during the daytime may alleviate physiological costs of higher  $T_N$ . For  
467 example, lizards acclimated to warmer  $T_N$  may adopt diurnal thermoregulation strategies to  
468 reduce body temperatures and minimize levels of activity. Yet, contrary to our expectations,  
469 diurnal  $T_{pref}$  was not altered by the treatment. Instead, average  $T_{pref}$  was higher at the end of the  
470 experiment in both treatments ( $\Delta_{bT} = 2.09 \text{ }^\circ\text{C} \pm 2.45$ ), suggesting acclimation of thermal  
471 preference by lizards to general laboratory conditions (Pintor, Schwarzkopf and Krockenberger,  
472 2016) or to seasonality (post-hibernation vs mid-summer conditions) (Díaz, Iraeta and  
473 Monasterio, 2006). It is also possible that the differences in elevation between capture sites and  
474 laboratory facilities (585m a.s.l.) contributed to this pattern (mean elevation difference =  $814 \pm$

475 146 m) (Megía Palma et al., 2020). The absence of differences between treatments is consistent  
476 with previous comparative studies that demonstrated a relative insensitivity of  $T_{pref}$  to variation  
477 in thermal conditions in the common lizard (Gvoždík, 2002). Yet, we cannot disregard that  
478 other behavioural strategies may be used by lizards during the activity period to buffer effects  
479 of warmer  $T_N$ . For example, lizards may change their basking effort, shift the timing of their  
480 daily activity (Rozen-Rechels et al., 2020) or alter the exploitation of different micro-habitats  
481 (Gvoždík, 2002) to compensate for physiological effects of changes in  $T_N$ .

482 Behaviour is the main strategy that ectotherms use for short-term regulation of body  
483 temperature, and the common lizard is often described as an active thermoregulator (Rozen-  
484 Rechels et al., 2020). Yet, other mechanisms may also mitigate the effects of extreme thermal  
485 environments such as the production of heat shock proteins, changes in critical thermal limits  
486 and basal metabolic rate or the modulation of body shape and coloration (Gilbert & Miles, 2019;  
487 Rutschmann et al., 2020; Seebacher & Franklin, 2005). In our study system, lizards experienced  
488 changes in dorsal colour depending on the treatment: yearlings shifted toward lower luminance  
489 and darker colours in  $T_{Nc}$  in all populations with the exception of Bouvier. In contrast, lizards  
490 in  $T_{Nw}$  exhibited a higher luminance and lighter colours on their dorsum. According to the  
491 thermal melanism hypothesis, lighter-coloured individuals should be favoured in environments  
492 where the risk of overheating risks is high since they will not absorb solar radiation and heat as  
493 fast as darker individuals (Clusella Trullas et al., 2007; Geen & Johnston, 2014). Heat gain due  
494 to radiation is close to null during over-night, but warmer  $T_N$  could increase sensitivity to  
495 diurnal heat stress (Speights et al., 2017) and be a criterion of developmental plasticity affecting  
496 skin darkness. That is, lizards from the warmer treatment may adjust colouration toward a  
497 lighter dorsal colouration in order to diminish skin solar absorbance and mitigate the  
498 consequences of heat stress in a warmer environment. In any case, our results illustrate that  $T_N$   
499 may represent a relevant driver triggering a plastic adjustment of body colouration.

500 **Conclusions**

501 Recent evidence suggests that warmer nocturnal temperatures can advance the timing of  
502 reproduction and increase the quality of the offspring as demonstrated in the long-lived,  
503 viviparous Otago gecko *Woodworthia sp.* (Moore, Penniket, & Cree, 2020). Other studies have  
504 shown an augmentation of  $T_N$  of 6°C increased the probability of a second clutch in the common  
505 side-blotched lizard *Uta stansburiana* (Clarke & Zani, 2012). These studies corroborate our  
506 results and support the current paradigm: ectotherms can rapidly acclimate to warmer  $T_N$  and  
507 use them to improve energy intake and expand their thermal niche over part of the night or in  
508 different seasons (Lara Resendiz, 2019; Ziska, 2014). Yet, our work, as well as previous  
509 findings (Speights et al., 2017; Zhao et al., 2014) also suggests that one cannot ignore the  
510 potential costs of nocturnal warming, especially when warming is intense (our results) and when  
511 diurnal temperatures are already high (Monasterio, Shoo, Salvador, Iraeta, & Díaz, 2013; Zhao  
512 et al., 2014). Long-term experimental studies, monitoring changes in an individuals' life history  
513 traits are necessary to resolve under which conditions warmer nights are detrimental to  
514 ectotherms. The extent to which  $T_N$  will affect common lizard populations and other ectotherms  
515 species therefore remains an open question.

516 Our results also show minor, but interesting differences in the responses of lizards  
517 among different populations. Indeed, lizards from Bouvier were the only individuals to change  
518 toward darker colors and exhibit a lower rate of blood parasite infections in the warmer  
519 treatment. Both were unexpected results. Despite an initial choice of populations based on their  
520 similar climate conditions, a closer examination of the weather data revealed that extreme  
521 overnight temperatures during the summer are significantly higher in Bouvier and Barnassac  
522 than in Col du Pendu and Vialas. Whether the high temperatures at night in Bouvier, or other  
523 environmental differences not quantified such as the risk of predation or grazing, have selected  
524 for lizards with contrasted responses to extreme  $T_N$  is difficult to assess without complementary

525 analyses. We encourage future studies to incorporate the effects of nocturnal temperatures in  
526 experimental designs (Speights, Wolff, Barton, & Barton, 2018), but we also stress the  
527 importance of using multi-population comparison approaches to obtain a comprehensive  
528 perspective on the responses of species to climate change (Barton, 2017).

529

530 **Acknowledgements** - We thank S. Liegeois, C. Fosse et A. Le Pajolec for helping in lizard  
531 capture, field and lab work. We are grateful to the Parc National des Cévennes, the 'Office  
532 Nationale des Forêts' and the regions Occitanie and Auvergne-Rhône-Alpes that provided us  
533 access to the population sites and permission to capture and handle lizards (permits 81-2013-  
534 05; 2013274-0002, 2013/DREAL/259). Monitoring was supported by the 'Agence Nationale de  
535 la Recherche' ANR (ANR-13-JSV7-0011-01 to SM and ANR-17-CE02-0013 to JFLG). DBM  
536 was supported by NSF (EF128428 and EF1241848).

537 **Authors contribution** - AR, AD, SM and JFLG designed the study. AR, CL, MB, DBM and  
538 JC conducted field work. AR and CL performed the experiments. DRR and PB designed the  
539 thermal preference experiment. MR and RMP, respectively analysed plasma samples for  
540 oxidative status and blood parasites prevalence. AR analysed all data with the help of DRR  
541 (thermal data) and AB (coloration data) and drafted the manuscript with AD. All authors  
542 interpreted the results, provided editorial advices and gave final approval for publication.

543 **Data availability statement** – Data will be archived online if the manuscript is accepted for  
544 publication.

545

546 **REFERENCES**

- 547 Allen, M. R., Dube, O. P., Solecki, W., Aragón-Durand, F., Cramer, W., Humphreys, S., ...  
548 Zickfeld, K. (2018). Framing and Context. In *Global Warming of 1.5°C. An IPCC*  
549 *Special Report on the impacts of global warming of 1.5°C above pre-industrial levels*  
550 *and related global greenhouse gas emission pathways, in the context of strengthening*  
551 *the global response to the threat of climate change*, (p. 49).
- 552 Alonso-Alvarez, C., Bertrand, S., Devevey, G., Prost, J., Faivre, B., Chastel, O., & Sorci, G.  
553 (2006). an Experimental Manipulation of Life-History Trajectories and Resistance To  
554 Oxidative Stress. *Evolution*, 60(9), 1913. doi: 10.1554/05-644.1
- 555 Alward, R. D., Detling, J. K., & Milchunas, D. G. (1999). Grassland vegetation changes and  
556 nocturnal global warming. *Science*, 283(5399), 229–231. doi:  
557 10.1126/science.283.5399.229
- 558 Andrade, T. O., Krespi, L., Bonnardot, V., van Baaren, J., & Outreman, Y. (2016). Impact of  
559 change in winter strategy of one parasitoid species on the diversity and function of a  
560 guild of parasitoids. *Oecologia*, 180(3), 877–888. doi: 10.1007/s00442-015-3502-4
- 561 Angilletta, M. J., Cooper, B. S., Schuler, M. S., & Boyles, J. G. (2002). The Evolution of  
562 Thermal Physiology in Endotherms. *Journal of Thermal Biology*, 2, 249–268. doi:  
563 10.2741/E148
- 564 Avery, R. A. (1974). Storage lipids in the lizard *Lacerta vivipara*: a quantitative study.  
565 *Journal of Zoology*, Vol. 173, pp. 419–425. doi: 10.1111/j.1469-7998.1974.tb04124.x
- 566 Bai, C. M., Ma, G., Cai, W. Z., & Ma, C. Sen. (2019). Independent and combined effects of  
567 daytime heat stress and night-time recovery determine thermal performance. *Biology*  
568 *Open*, 8(3). doi: 10.1242/bio.038141
- 569 Barton, B. T. (2017). Beyond global warming: Putting the “climate” back into “climate  
570 change ecology.” *Food Webs*, 13, 51–52. doi: 10.1016/j.fooweb.2017.03.002

571 Barton, B. T., & Schmitz, O. J. (2018). Opposite effects of daytime and nighttime warming on  
572 top-down control of plant diversity. *Ecology*, 99(1), 13–20. doi: 10.1002/ecy.2062

573 Bateman, P. W., & Fleming, P. A. (2009). To cut a long tail short: A review of lizard caudal  
574 autotomy studies carried out over the last 20 years. *Journal of Zoology*, 277(1), 1–14.  
575 doi: 10.1111/j.1469-7998.2008.00484.x

576 Bestion, E., Teyssier, A., Richard, M., Clobert, J., & Cote, J. (2015). Live Fast, Die Young:  
577 Experimental Evidence of Population Extinction Risk due to Climate Change. *PLoS*  
578 *Biology*, 13(10), 1–19. doi: 10.1371/journal.pbio.1002281

579 Brusch, G. A., Lourdais, O., Kaminsky, B., & DeNardo, D. F. (2018). Muscles provide an  
580 internal water reserve for reproduction. *Proceedings of the Royal Society B: Biological*  
581 *Sciences*, 285(1881). doi: 10.1098/rspb.2018.0752

582 Burraco, P., Díaz-Paniagua, C., & Gomez-Mestre, I. (2017). Different effects of accelerated  
583 development and enhanced growth on oxidative stress and telomere shortening in  
584 amphibian larvae. *Scientific Reports*, 7(1), 1–11. doi: 10.1038/s41598-017-07201-z

585 Burraco, P., Orizaola, G., Monaghan, P., & Metcalfe, N. B. (2020). Climate change and  
586 ageing in ectotherms. *Global Change Biology*, 26(10), 5371–5381. doi:  
587 10.1111/gcb.15305

588 Chamaille-Jammes, S., Massot, M., Aragon, P., & Clobert, J. (2006). Global warming and  
589 positive fitness response in mountain populations of common lizards *Lacerta vivipara*.  
590 *Global Change Biology*, 12(2), 392–402. doi: 10.1111/j.1365-2486.2005.01088.x

591 Clarke, D. N., & Zani, P. A. (2012). Effects of night-time warming on temperate ectotherm  
592 reproduction: Potential fitness benefits of climate change for side-blotched lizards.  
593 *Journal of Experimental Biology*, 215(7), 1117–1127. doi: 10.1242/jeb065359

594 Clusella Trullas, S., van Wyk, J. H., & Spotila, J. R. (2007). Thermal melanism in ectotherms.  
595 *Journal of Thermal Biology*, 32(5), 235–245. doi: 10.1016/j.jtherbio.2007.01.013



596 Colinet, H., Sinclair, B. J., Vernon, P., & Renault, D. (2015). Insects in Fluctuating Thermal  
597 Environments. *Annual Review of Entomology*, *60*(1), 123–140. doi: 10.1146/annurev-  
598 ento-010814-021017

599 Costantini, D. (2014). Oxidative Stress and Hormesis in Evolutionary Ecology and  
600 Physiology. In *Oxidative Stress and Hormesis in Evolutionary Ecology and Physiology*.  
601 doi: 10.1007/978-3-642-54663-1

602 Costantini, D. (2016). Oxidative stress ecology and the d-ROMs test: facts, misfacts and an  
603 appraisal of a decade’s work. *Behavioral Ecology and Sociobiology*, *70*(5), 809–820.  
604 doi: 10.1007/s00265-016-2091-5

605 Costantini, D. (2019). Understanding diversity in oxidative status and oxidative stress: The  
606 opportunities and challenges ahead. *Journal of Experimental Biology*, *222*(13). doi:  
607 10.1242/jeb.194688

608 Costantini, D., Marasco, V., & Møller, A. P. (2011). A meta-analysis of glucocorticoids as  
609 modulators of oxidative stress in vertebrates. *Journal of Comparative Physiology B:*  
610 *Biochemical, Systemic, and Environmental Physiology*, *181*(4), 447–456. doi:  
611 10.1007/s00360-011-0566-2

612 Davy, R., Esau, I., Chernokulsky, A., Outten, S., & Zilitinkevich, S. (2017). Diurnal  
613 asymmetry to the observed global warming. *International Journal of Climatology*, *37*(1),  
614 79–93. doi: 10.1002/joc.4688

615 Díaz, J. A., Iraeta, P., & Monasterio, C. (2006). Seasonality provokes a shift of thermal  
616 preferences in a temperate lizard, but altitude does not. *Journal of Thermal Biology*,  
617 *31*(3), 237–242. doi: 10.1016/j.jtherbio.2005.10.001

618 Dillon, M. E., Wang, G., & Huey, R. B. (2010). Global metabolic impacts of recent climate  
619 warming. *Nature*, *467*(7316), 704–706. doi: 10.1038/nature09407

620 Dimitris Rizopoulos. (2020). *Package ‘GLMMadaptive.’*

621 Dupoué, A., Angelier, F., Brischoux, F., Denardo, D. F., Trouvé, C., Parenteau, C., &  
622 Lourdais, O. (2016). Water deprivation increases maternal corticosterone levels and  
623 enhances offspring growth in the snake *Vipera aspis*. *Journal of Experimental Biology*,  
624 *219*(5), 658–667. doi: 10.1242/jeb.132639

625 Dupoué, A., Angelier, F., Ribout, C., Meylan, S., Rozen-Rechels, D., Decencière, B., ... Le  
626 Galliard, J. F. (2020). Chronic water restriction triggers sex-specific oxidative stress and  
627 telomere shortening in lizards. *Biology Letters*, *16*(2). doi: 10.1098/rsbl.2019.0889

628 Dupoué, A., Blaimont, P., Rozen-Rechels, D., Richard, M., Meylan, S., Clobert, J., ... Le  
629 Galliard, J. F. (2020). Water availability and temperature induce changes in oxidative  
630 status during pregnancy in a viviparous lizard. *Functional Ecology*, *34*(2), 475–485. doi:  
631 10.1111/1365-2435.13481

632 Dupoué, A., Rutschmann, A., Le Galliard, J. F., Clobert, J., Angelier, F., Marciau, C., ...  
633 Meylan, S. (2017). Shorter telomeres precede population extinction in wild lizards.  
634 *Scientific Reports*, *7*(1), 1–8. doi: 10.1038/s41598-017-17323-z

635 Dupoué, A., Rutschmann, A., Le Galliard, J. F., Miles, D. B., Clobert, J., DeNardo, D. F., ...  
636 Meylan, S. (2017). Water availability and environmental temperature correlate with  
637 geographic variation in water balance in common lizards. *Oecologia*, *185*(4), 561–571.  
638 doi: 10.1007/s00442-017-3973-6

639 Gaston, K. J. (2019). Nighttime ecology: The “nocturnal problem” revisited. *American*  
640 *Naturalist*, *193*(4), 481–502. doi: 10.1086/702250

641 Geen, M. R. S., & Johnston, G. R. (2014). Coloration affects heating and cooling in three  
642 color morphs of the Australian bluetongue lizard, *Tiliqua scincoides*. *Journal of Thermal*  
643 *Biology*, *43*(1), 54–60. doi: 10.1016/j.jtherbio.2014.04.004

644 Gilbert, A. L., & Miles, D. B. (2019). Antagonistic responses of exposure to sublethal  
645 temperatures: Adaptive phenotypic plasticity coincides with a reduction in organismal

646 performance. *American Naturalist*, 194(3), 344–355. doi: 10.1086/704208

647 González-Suárez, M., Le Galliard, J.-F., & Claessen, D. (2011). Population and life-history  
648 consequences of within-cohort individual variation. *American Naturalist*, 178(4), 525–  
649 537. doi: 10.1086/661906

650 Gvoždík, L. (2002). To heat or to save time? Thermoregulation in the lizard *Zootoca vivipara*  
651 (Squamata: Lacertidae) in different thermal environments along an altitudinal gradient.  
652 *Canadian Journal of Zoology*, 80(3), 479–492. doi: 10.1139/z02-015

653 Harvell, C. D., Mitchell, C. E., Ward, J. R., Altizer, S., Dobson, A. P., Ostfeld, R. S., &  
654 Samuel, M. D. (2002). Climate Warming and Disease Risks for Terrestrial and Marine  
655 Biota. *Science*, 296, 2158–2162.

656 Hertz, P. E., Huey, R. B., & Stevenson, R. D. (1993). Evaluating Temperature Regulation by  
657 Field-Active Ectotherms: The Fallacy of the Inappropriate Question. *The American*  
658 *Naturalist*, 142(5), 796–818. doi: 10.1086/285573

659 Horváthová, T., Cooney, C. R., Fitze, P. S., Oksanen, T. A., Jelić, D., Ghira, I., ... Jandzik, D.  
660 (2013). Length of activity season drives geographic variation in body size of a widely  
661 distributed lizard. *Ecology and Evolution*, 3(8), 2424–2442. doi: 10.1002/ece3.613

662 Huey, R. B., & Kingsolver, J. G. (2019). Climate warming, resource availability, and the  
663 metabolic meltdown of ectotherms. *American Naturalist*, 194(6), E140–E150. doi:  
664 10.1086/705679

665 Huey, R. B., & Slatkin, M. (1976). Cost and Benefits of Lizard Thermoregulation. *The*  
666 *Quarterly Review of Biology*, 51(3), 363–384.

667 Josserand, R., Haussy, C., Agostini, S., Decencière, B., Le Galliard, J. F., & Meylan, S.  
668 (2020). Chronic elevation of glucocorticoids late in life generates long lasting changes in  
669 physiological state without a life history switch. *General and Comparative*  
670 *Endocrinology*, 285(August 2019), 113288. doi: 10.1016/j.ygcen.2019.113288

671 Kayser, M. S., Yue, Z., & Sehgal, A. (2014). A critical period of sleep for development of  
672 courtship circuitry and behavior in *Drosophila*. *Science*, *344*(6181), 269–274. doi:  
673 10.1126/science.1250553

674 Kingsolver, J. G., Higgins, J. K., & Augustine, K. E. (2015). Fluctuating temperatures and  
675 ectotherm growth: Distinguishing non-linear and time-dependent effects. *Journal of*  
676 *Experimental Biology*, *218*(14), 2218–2225. doi: 10.1242/jeb.120733

677 Lara Resendiz, A. R. (2019). ¿ QUÉ IMPLICACIONES ECOFISIOLÓGICAS TIENE LA  
678 ACTIVIDAD NOCTURNA EN REPTILES “ DIURNOS ”? UNA REVISIÓN What are  
679 the ecophysiological implications of nocturnal activity in “ diurnal ” reptiles ? A review.  
680 *ACTA BIOLÓGICA COLOMBIANA*, *25*(2), 314–326.

681 Le Galliard, J.-F., Clobert, J., & Ferrière, R. (2004). Physical performance and darwinian  
682 fitness in lizards. *Nature*, *432*(November), 1–4.

683 Ma, G., Hoffmann, A. A., & Ma, C. Sen. (2015). Daily temperature extremes play an  
684 important role in predicting thermal effects. *Journal of Experimental Biology*, *218*(14),  
685 2289–2296. doi: 10.1242/jeb.122127

686 Ma, G., Le Lann, C., van Baaren, J., & Ma, C.-S. (2020). Night Warming Affecting  
687 Interspecific Interactions: Implications for Biological Control. In *Integrative Biological*  
688 *Control* (pp. 231–248).

689 Megía-Palma, R., Martínez, J., Cuervo, J. J., Belliure, J., Jiménez-Robles, O., Gomes, V., ...  
690 Merino, S. (2018). Molecular evidence for host–parasite co-speciation between lizards  
691 and *Schellackia* parasites. *International Journal for Parasitology*, *48*(9–10), 709–718.  
692 doi: 10.1016/j.ijpara.2018.03.003

693 Megía Palma, R., Jiménez-Robles, O., Hernández-Agüero, J. A., & de la Riva, I. (2020).  
694 Plasticity of haemoglobin concentration and thermoregulation in a mountain lizard.  
695 *Journal of Thermal Biology*, *in Press*.

696 Metcalfe, N. B., & Monaghan, P. (2001). Compensation for a bad start: Grow now, pay later?  
697 *Trends in Ecology and Evolution*, *16*(5), 254–260. doi: 10.1016/S0169-5347(01)02124-3

698 Miller, C. R., Barton, B. T., Zhu, L., Radeloff, V. C., Oliver, K. M., Harmon, J. P., & Ives, A.  
699 R. (2017). Combined effects of night warming and light pollution on predator - Prey  
700 interactions. *Proceedings of the Royal Society B: Biological Sciences*, *284*(1864). doi:  
701 10.1098/rspb.2017.1195

702 Monaghan, P., Metcalfe, N. B., & Torres, R. (2009). Oxidative stress as a mediator of life  
703 history trade-offs: Mechanisms, measurements and interpretation. *Ecology Letters*, *12*(1),  
704 75–92. doi: 10.1111/j.1461-0248.2008.01258.x

705 Monasterio, C., Shoo, L. P., Salvador, A., Iraeta, P., & Díaz, J. A. (2013). High temperature  
706 constrains reproductive success in a temperate lizard: Implications for distribution range  
707 limits and the impacts of climate change. *Journal of Zoology*, *291*(2), 136–145. doi:  
708 10.1111/jzo.12057

709 Moore, G., Penniket, S., & Cree, A. (2020). Greater basking opportunity and warmer nights  
710 during late pregnancy advance modal birth season in a live-bearing gecko, lowering the  
711 risk of reduced embryonic condition. *Biological Journal of the Linnean Society*, *130*(1),  
712 128–141. doi: 10.1093/biolinnean/blaa017

713 Mu, J., Peng, Y., Xi, X., Wu, X., Li, G., Niklas, K. J., & Sun, S. (2015). Artificial asymmetric  
714 warming reduces nectar yield in a Tibetan alpine species of Asteraceae. *Annals of*  
715 *Botany*, *116*(6), 899–906. doi: 10.1093/aob/mcv042

716 Nordberg, E. J., & Schwarzkopf, L. (2019). Heat seekers: A tropical nocturnal lizard uses  
717 behavioral thermoregulation to exploit rare microclimates at night. *Journal of Thermal*  
718 *Biology*, *82*(January), 107–114. doi: 10.1016/j.jtherbio.2019.03.018

719 Palareti, G., Legnani, C., Cosmi, B., Antonucci, E., Erba, N., Poli, D., ... Tosetto, A. (2016).  
720 Comparison between different D-Dimer cutoff values to assess the individual risk of

721 recurrent venous thromboembolism: Analysis of results obtained in the DULCIS study.  
722 *International Journal of Laboratory Hematology*, 38(1), 42–49. doi: 10.1111/ijlh.12426

723 Pintor, A. F. V., Schwarzkopf, L., & Krockenberger, A. K. (2016). Extensive acclimation in  
724 ectotherms conceals interspecific variation in thermal tolerance limits. *PLoS ONE*, 11(3),  
725 1–15. doi: 10.1371/journal.pone.0150408

726 R core Team. (2020). *R: A language and environment for statistical computing*. R Foundation  
727 for Statistical Computing. Vienna, Austria.

728 Richard, M., Massot, M., Clobert, J., & Meylan, S. (2012). Litter quality and inflammatory  
729 response are dependent on mating strategy in a reptile. *Oecologia*, 170(1), 39–46. doi:  
730 10.1007/s00442-012-2282-3

731 Rozen-Rechels, D., Dupoué, A., Meylan, S., Qitout, K., Decencière, B., Agostini, S., &  
732 Galliard, J.-F. Le. (2020). Acclimation to water restriction implies different paces for  
733 behavioral and physiological responses in a lizard species. *Physiological and*  
734 *Biochemical Zoology*, 93(2).

735 Rutschmann, A., Rozen-rechels, D., Dupoué, A., Blaimont, P., Villemereuil, P. De, Miles, D.  
736 B., ... Clobert, J. (2020). *Climate dependent heating efficiency in the common lizard*.  
737 (February), 1–11. doi: 10.1002/ece3.6241

738 Salin, K., Auer, S. K., Rudolf, A. M., Anderson, G. J., Cairns, A. G., Mullen, W., ...  
739 Metcalfe, N. B. (2015). Individuals with higher metabolic rates have lower levels of  
740 reactive oxygen species in vivo. *Biology Letters*, 11(9), 4–7. doi: 10.1098/rsbl.2015.0538

741 Sears, M. W. (2005). Geographic variation in the life history of the sagebrush lizard: The role  
742 of thermal constraints on activity. *Oecologia*, 143(1), 25–36. doi: 10.1007/s00442-004-  
743 1767-0

744 Seebacher, F., & Franklin, C. E. (2005). Physiological mechanisms of thermoregulation in  
745 reptiles: A review. *Journal of Comparative Physiology B: Biochemical, Systemic, and*

746 *Environmental Physiology*, 175(8), 533–541. doi: 10.1007/s00360-005-0007-1

747 Sinclair, B. J., Marshall, K. E., Sewell, M. A., Levesque, D. L., Willett, C. S., Slotsbo, S., ...

748 Huey, R. B. (2016). Can we predict ectotherm responses to climate change using thermal

749 performance curves and body temperatures? *Ecology Letters*, 19(11), 1372–1385. doi:

750 10.1111/ele.12686

751 Sorci, G., & Clobert, J. (1995). Effects of maternal parasite load on offspring life-history traits

752 in the common lizard (*Lacerta vivipara*). *Journal of Evolutionary Biology*, 723(8), 711–

753 723.

754 Speights, C. J., & Barton, B. T. (2019). Timing is everything: Effects of day and night

755 warming on predator functional traits. *Food Webs*, 21, e00130. doi:

756 10.1016/j.fooweb.2019.e00130

757 Speights, C. J., Harmon, J. P., & Barton, B. T. (2017). Contrasting the potential effects of

758 daytime versus nighttime warming on insects. *Current Opinion in Insect Science*, 23, 1–

759 6. doi: 10.1016/j.cois.2017.06.005

760 Speights, C. J., Wolff, C. L., Barton, M. E., & Barton, B. T. (2018). Why and how to create

761 nighttime warming treatments for ecological field experiments. *Yale Journal of Biology*

762 *and Medicine*, 91(4), 471–480.

763 Stahlschmidt, Z. R., French, S. S., Ahn, A., Webb, A., & Butler, M. W. (2017). A simulated

764 heat wave has diverse effects on immune function and oxidative physiology in the corn

765 snake (*Pantherophis guttatus*). *Physiological and Biochemical Zoology*, 90(4), 434–444.

766 doi: 10.1086/691315

767 Stier, A., Dupoue, A., Picard, D., Angelier, F., Brischoux, F., & Lourdais, O. (2017).

768 *Oxidative stress in a capital breeder ( Vipera aspis ) facing pregnancy and water*

769 *constraints*. 1792–1796. doi: 10.1242/jeb.156752

770 Sunday, J. M., Bates, A. E., Kearney, M. R., Colwell, R. K., Dulvy, N. K., Longino, J. T., &

771 Huey, R. B. (2014). Thermal-safety margins and the necessity of thermoregulatory  
772 behavior across latitude and elevation. *Proceedings of the National Academy of Sciences*  
773 *of the United States of America*, 111(15), 5610–5615. doi: 10.1073/pnas.1316145111

774 Vose, R. S., Easterling, D. R., & Gleason, B. (2005). Maximum and minimum temperature  
775 trends for the globe: An update through 2004. *Geophysical Research Letters*, 32(23), 1–  
776 5. doi: 10.1029/2005GL024379

777 Weller, H. I. (2019). *colordistance: Distance Metrics for Image Color Similarity. R package*  
778 *version 1.1.0*.

779 Whitney-Johnson, A., Thompson, M., & Hon, E. (2005). Responses to Predicted Global  
780 Warming in *Pieris rapae* L. (Lepidoptera): Consequences of Nocturnal Versus Diurnal  
781 Temperature Change on Fitness Components. *Environmental Entomology*, 34(3), 535–  
782 540. doi: 10.1603/0046-225x-34.3.535

783 Wu, T., Hao, S., Sun, O. J., & Kang, L. (2012). Specificity responses of grasshoppers in  
784 temperate grasslands to diel asymmetric warming. *PLoS ONE*, 7(7), 1–8. doi:  
785 10.1371/journal.pone.0041764

786 Zhao, F., Zhang, W., Hoffmann, A. A., & Ma, C. Sen. (2014). Night warming on hot days  
787 produces novel impacts on development, survival and reproduction in a small arthropod.  
788 *Journal of Animal Ecology*, 83(4), 769–778. doi: 10.1111/1365-2656.12196

789 Ziska, L. H. (2014). Increasing minimum daily temperatures are associated with enhanced  
790 pesticide use in cultivated soybean along a latitudinal gradient in the mid-western United  
791 States. *PLoS ONE*, 9(6). doi: 10.1371/journal.pone.0098516

792



793 FIGURES CAPTIONS

794 **Fig.1. Hypothetical impact of an increase in diurnal and nocturnal temperature on**  
795 **individual performance.** For ectotherms, the relationship between performance and  
796 temperature follows a right-skewed bell-shaped curve (Huey & Slatkin, 1976). **(a)** Increasing  
797 diurnal temperatures are considered a potential threat for ectotherms as they may push  
798 individuals from temperatures near  $T_{opt}$  (yellow box) towards  $CT_{max}$  (red box), therefore  
799 reducing performance (red arrow). **(b)** Nocturnal temperatures are generally low (blue  
800 rectangle) and associated with a resting metabolic expenditure. An increase in nocturnal  
801 temperatures (yellow rectangle) may increase individual performance (red arrow) by moving  
802 body temperatures towards activity levels, reducing optimal resting time and raising energetic  
803 costs of rest.

804 **Fig.2. Environmental conditions in source populations and daily cycle of temperature in**  
805 **laboratory conditions.** Average (a.) and extreme (b.) nocturnal temperatures recorded  
806 overnight in the four sampled populations. Letters indicate significant differences among  
807 populations, according to a post-hoc Tuckey test. Extreme high temperatures are defined as the  
808 97.5% upper quantile of the distribution of nocturnal temperatures. Panel (c.) represents the  
809 differences between the warm (yellow) and the control (blue) nocturnal temperature treatments  
810 over a 24 hours day-night cycle. Over the day, lizards from the two thermal treatments were  
811 maintained in similar conditions and were allowed to bask under a 25W bulb for six hours a  
812 day, from 9.00 to 12.00 and from 14.00 to 17.00. The absence of heat during the mid-day time  
813 (12.00 to 14.00) explains the pattern of diurnal temperatures.

814 **Fig.3. Morphology** - *a.* Yearling growth rate in body size (in mm), *b.* body mass difference (in  
815 g), *c.* body condition (in g) and *d.* difference in tail volume (in  $mm^3$ ) according to temperature  
816 treatment ( $T_{Nc}$ : pale-blue;  $T_{Nw}$ : pale-yellow). To ease the graphical representation,  $\Delta_{SVL}$ ,  $\Delta_{Mass}$   
817 and  $\Delta_{Tail}$  are all corrected for their initial values. As a residual,  $\Delta_{BC}$  is not corrected.

818 **Fig.4. Colouration** - (a) The four most dominant colours in individual dorsal patterns and their  
819 associated HEX code. (b) Dorsal luminance (in cd/m<sup>2</sup>) depending on the treatment. (c) Change  
820 of the proportion of colours in the dorsal pattern depending on the treatment. To ease the  
821 graphical representation,  $\Delta_{COL}$  and  $\Delta_{LUM}$  are both corrected for initial values of **Col** and **Lum**.

822 **Fig.5. - Parasite load.** (a) Yearlings infestation rate by mites depending on the treatment. (b)  
823 Proportion of yearlings infested by blood parasites at the end of the treatment.

824

825 **Table 1: Habitat characteristics.** Elevation (in m), latitude and longitude of each population  
826 sites and average nocturnal ( $T_N$ ) and diurnal ( $T_D$ ) temperatures (in °C). Extreme temperatures  
827 ( $T_{N(EX)}$  and  $T_{D(EX)}$ ) correspond to the 97.5% upper quantile of the temperature distribution  
828 recorded in each location.

829

Figure 1

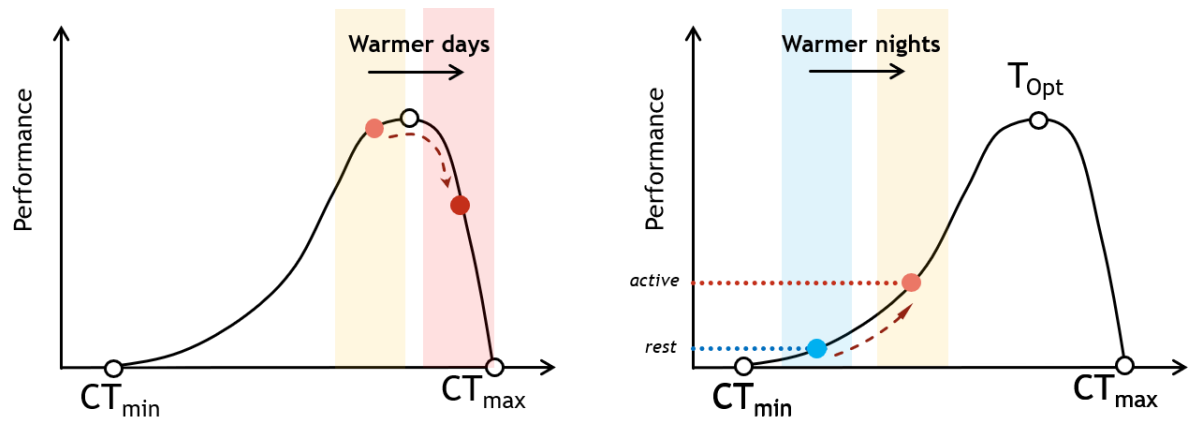


Figure 2

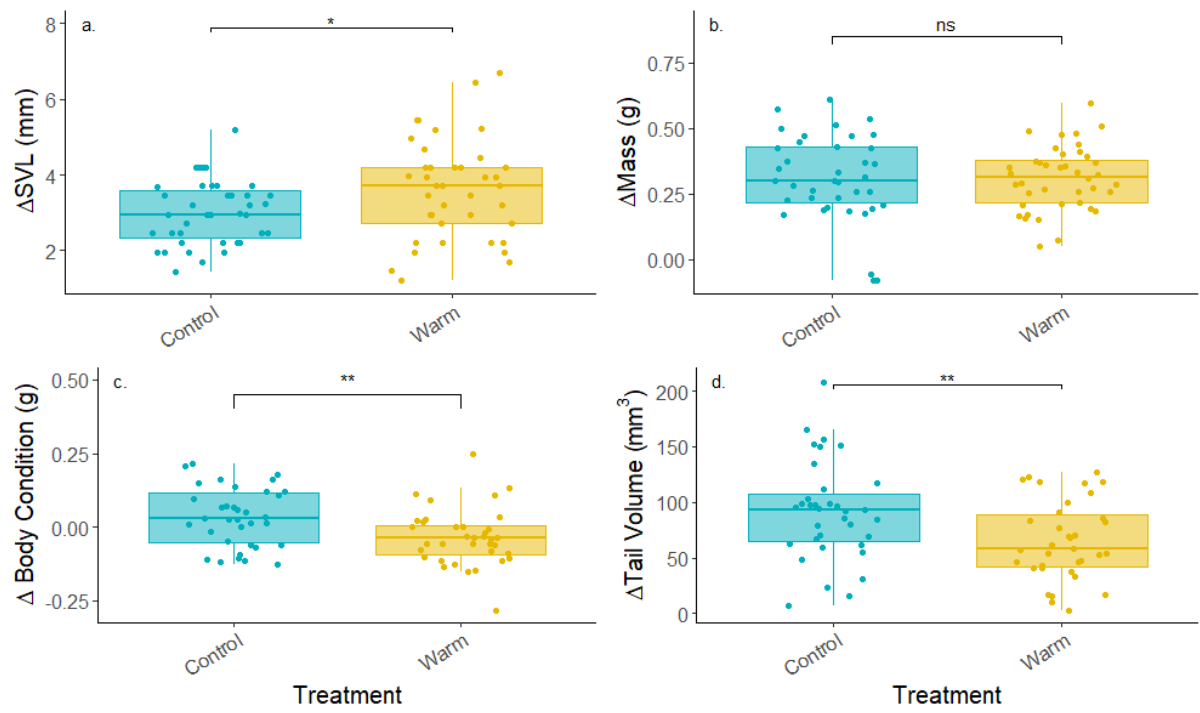


Figure 3

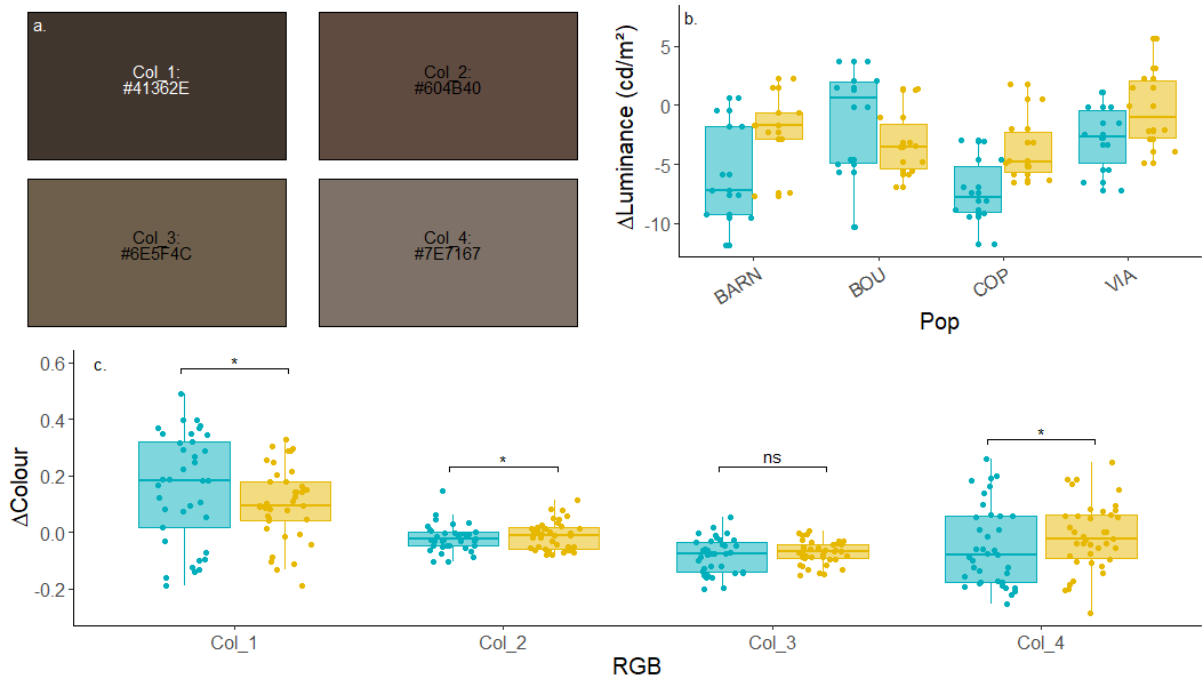


Figure 4

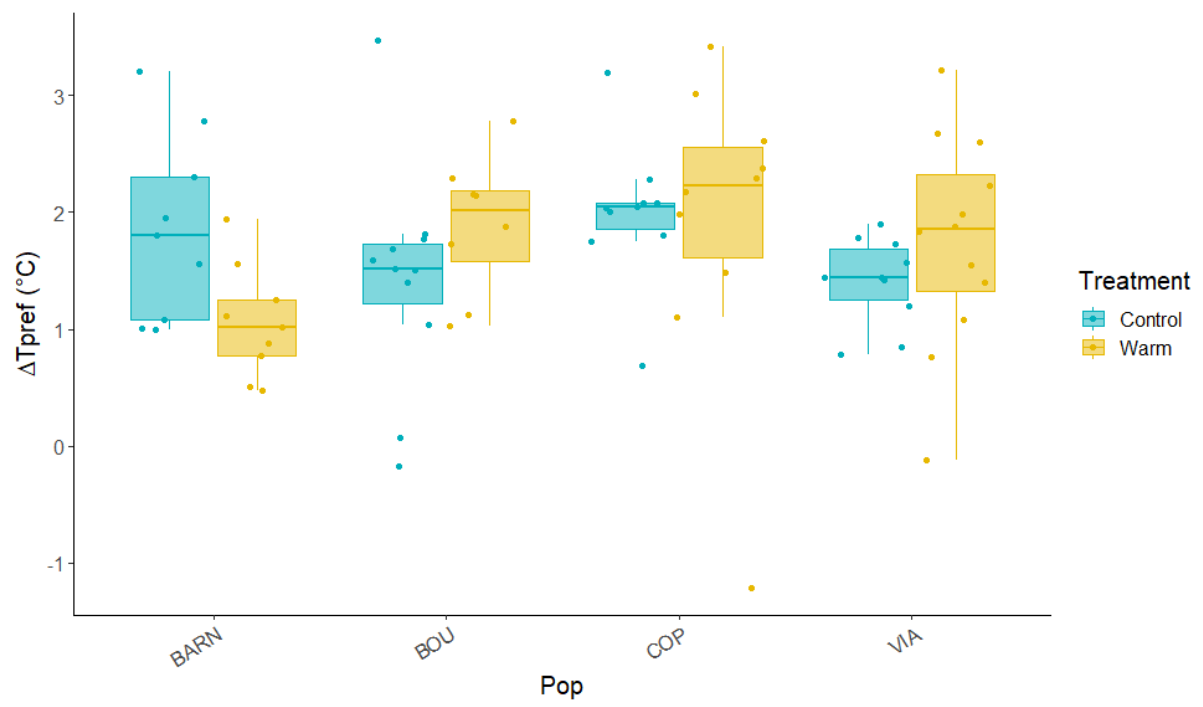


Figure 5

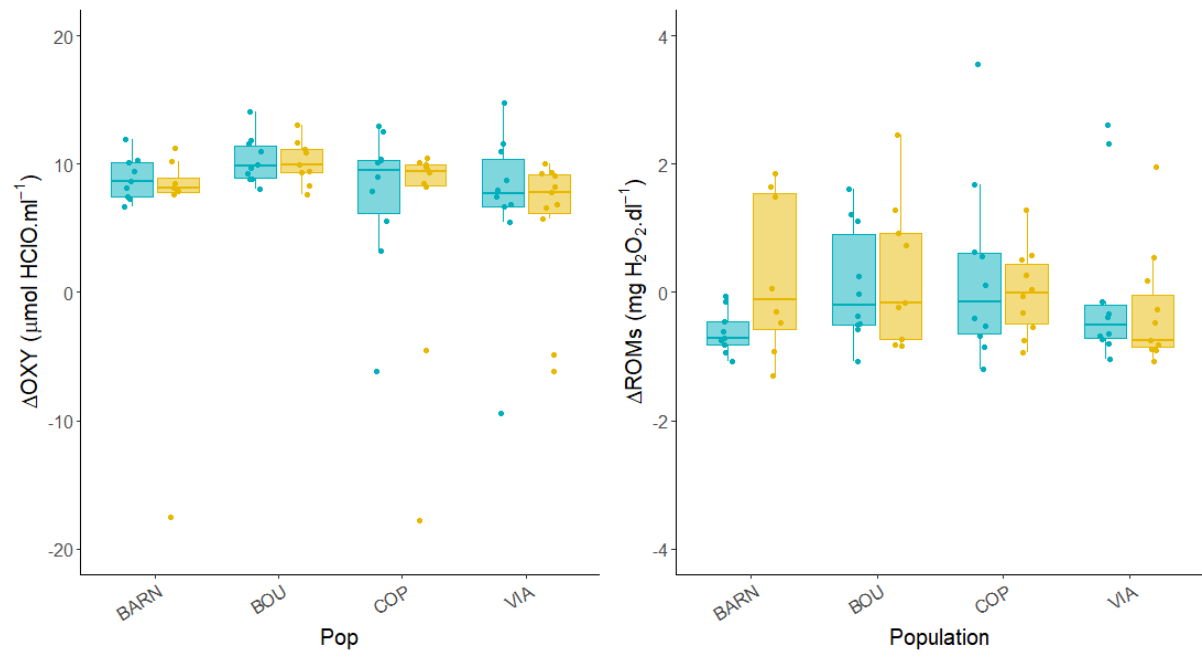


Figure 6

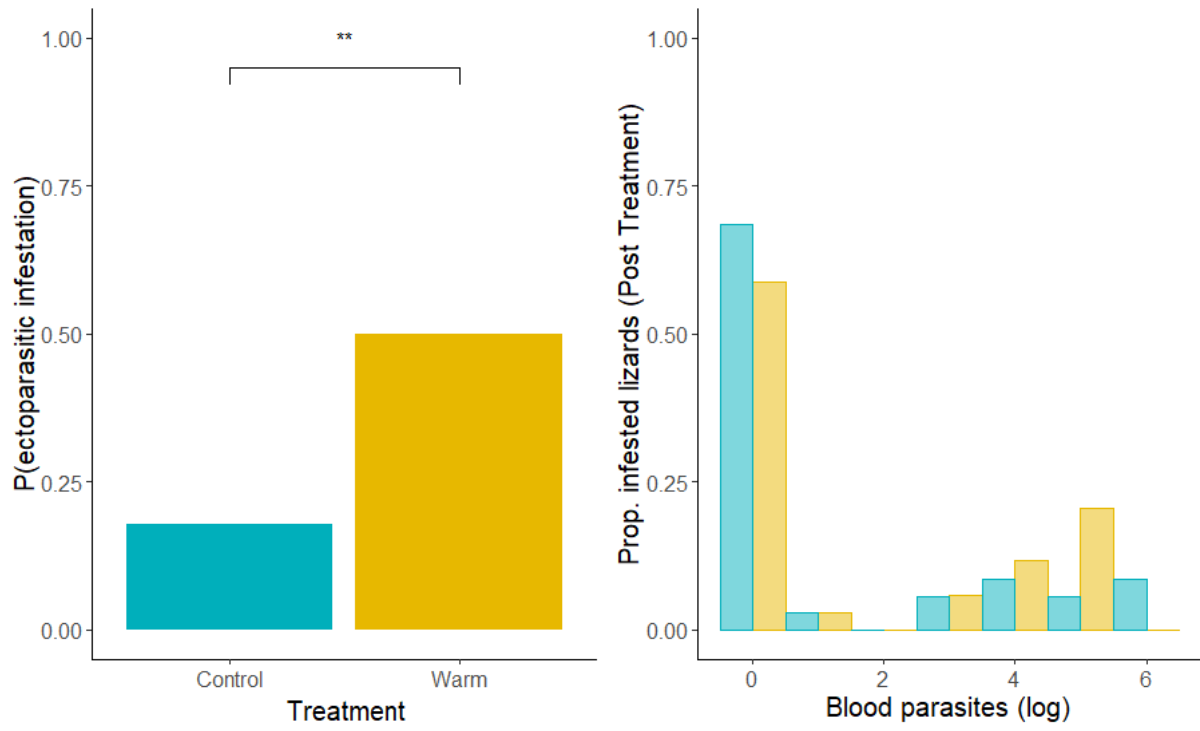




Table 1

Population	Elevation	$T_N$	$T_{N(Ex)}$	$T_D$	$T_{D(Ex)}$	Lat.	Long.
Barnassac	1527	$13.6 \pm 4.2$	23.1	$18.6 \pm 7.3$	33.6	44°25'40.4"N	3°45'50.1"E
Vialas	1190	$13.1 \pm 3.7$	23.0	$16.9 \pm 6.1$	30.5	44°20'17.4"N	3°46'4.7"E
Col du Pendu	1420	$12.6 \pm 3.1$	19.5	$17.1 \pm 6.1$	31.5	44°39'18.3"N	4°01'49.7"E
Bouvier	1461	$12.4 \pm 3.7$	21.0	$18.8 \pm 8.7$	37.5	44°45'25.6"N	3°31'05.7"E