



Contribution of Yeast Studies to the Understanding of BCL-2 Family Intracellular Trafficking

Stéphen Manon, Akandé Rouchidane Eyitayo, Mathilde Gonin, Hubert Arokium

► To cite this version:

Stéphen Manon, Akandé Rouchidane Eyitayo, Mathilde Gonin, Hubert Arokium. Contribution of Yeast Studies to the Understanding of BCL-2 Family Intracellular Trafficking. International Journal of Molecular Sciences, 2021, 22 (8), pp.4086. 10.3390/ijms22084086 . hal-03395265

HAL Id: hal-03395265

<https://hal.science/hal-03395265>

Submitted on 22 Oct 2021

HAL is a multi-disciplinary open access archive for the deposit and dissemination of scientific research documents, whether they are published or not. The documents may come from teaching and research institutions in France or abroad, or from public or private research centers.

L'archive ouverte pluridisciplinaire **HAL**, est destinée au dépôt et à la diffusion de documents scientifiques de niveau recherche, publiés ou non, émanant des établissements d'enseignement et de recherche français ou étrangers, des laboratoires publics ou privés.



Review

Contribution of Yeast Studies to the Understanding of BCL-2 Family Intracellular Trafficking

Akandé Rouchidane Eytayo, Mathilde Gonin, Hubert Arokium and Stéphen Manon *

Institut de Biochimie et de Génétique Cellulaires, Université de Bordeaux, CNRS, UMR 5095,
1 Rue Camille Saint-Saëns, 33077 Bordeaux, France; akande.rouchidane-eytayo@ibgc.cnrs.fr (A.R.E.);
mathilde.gonin@ibgc.cnrs.fr (M.G.); roaks14@yahoo.fr (H.A.)

* Correspondence: manon@ibgc.cnrs.fr

Abstract: BCL-2 family members are major regulators of apoptotic cell death in mammals. They form an intricate regulatory network that ultimately regulates the release of apoptogenic factors from mitochondria to the cytosol. The ectopic expression of mammalian BCL-2 family members in the yeast *Saccharomyces cerevisiae*, which lacks BCL-2 homologs, has been long established as a useful addition to the available models to study their function and regulation. In yeast, individual proteins can be studied independently from the whole interaction network, thus providing insight into the molecular mechanisms underlying their function in a living context. Furthermore, one can take advantage of the powerful tools available in yeast to probe intracellular trafficking processes such as mitochondrial sorting and interactions/exchanges between mitochondria and other compartments, such as the endoplasmic reticulum that are largely conserved between yeast and mammals. Yeast molecular genetics thus allows the investigation of the role of these processes on the dynamic equilibrium of BCL-2 family members between mitochondria and extramitochondrial compartments. Here we propose a model of dynamic regulation of BCL-2 family member localization, based on available evidence from ectopic expression in yeast.

Keywords: mitochondria; Mitochondria-Associated Membranes; Bcl-2 family; endoplasmic reticulum; apoptosis; Translocase of Outer Membrane



Citation: Rouchidane Eytayo, A.; Gonin, M.; Arokium, H.; Manon, S. Contribution of Yeast Studies to the Understanding of BCL-2 Family Intracellular Trafficking. *Int. J. Mol. Sci.* **2021**, *22*, 4086. <https://doi.org/10.3390/ijms22084086>

Academic Editor: Sergio Giannattasio

Received: 24 February 2021

Accepted: 13 April 2021

Published: 15 April 2021

Publisher's Note: MDPI stays neutral with regard to jurisdictional claims in published maps and institutional affiliations.



Copyright: © 2021 by the authors. Licensee MDPI, Basel, Switzerland. This article is an open access article distributed under the terms and conditions of the Creative Commons Attribution (CC BY) license (<https://creativecommons.org/licenses/by/4.0/>).

1. Introduction

BCL-2 family members are major regulators of the apoptotic process in mammalian cells [1–3] (for reviews). These proteins are largely conserved in vertebrates [4] but closely related homologs have been identified in most invertebrates [5–7]. However, no BCL-2 homolog has been identified in plants, where the ectopic expression of murine pro-apoptotic protein tBID does not increase Programmed Cell Death [8]. Although the yeast *Saccharomyces cerevisiae* does not contain any obvious BCL-2 homolog (but see the discussion on Ybh3/Bxi1 below), the expression of mammalian BCL-2 family members recapitulates events that are associated with apoptosis (reviewed in [9]), making yeast an adequate tool to investigate molecular aspects of the functions of these proteins.

Their main function is to regulate the permeability of the outer mitochondrial membrane (OMM) towards so-called apoptogenic factors that are normally sequestered in the mitochondrial intermembrane space (IMS) [10,11] (for reviews). The pro-apoptotic proteins BAX and BAK form the core of the permeabilization process: following an apoptotic signal, they oligomerize and form and/or stabilize a large size pore that enables the release of apoptogenic factors to extramitochondrial compartments [12] (for review). BAX/BAK function in OMM permeabilization is prevented by anti-apoptotic proteins (BCL-2, BCL-xL, MCL-1...) and directly or indirectly activated by BH3-only proteins (tBID, BIM, PUMA, NOXA, BAD...).

The subcellular localization of BCL-2 family members is a highly dynamic and highly regulated process. Typically, BAX was initially found in the cytosol of non-apoptotic cells

and was translocated to the OMM following the induction of apoptosis. This rather simple view was challenged by the demonstration that BAX could be retrotranslocated from mitochondria to the cytosol [13]. Interestingly, anti-apoptotic proteins BCL-2 and BCL-xL have been shown to stimulate both BAX translocation [14,15] and retrotranslocation [13,16,17] and the subcellular localization of these two proteins is also multiple and regulated [18] (for review). Besides their well-established function as regulators of OMM permeability, they contribute to the regulation of Ca^{2+} regulation in the ER (Endoplasmic Reticulum) and the modulation of the activity of some transcription factors in the nucleus. These different localizations (and function) might be related to post-translational modifications of these proteins, such as phosphorylation for BCL-2 [19] and phosphorylation [20] and deamidation [21] for BCL-xL.

It is now well established that mitochondria and ER come close to each other in regions that have been termed MERC (Mitochondria-ER Contacts) [22]. Recently, an interactomic study showed that BAX was present in these domains, characterized as proteins that are near a linker between mitochondrial protein TOM20 and ER protein SEC61 [23]. Recent studies also supported the hypothesis that ER domains participating to these contacts, which are termed Mitochondria-Associated Membranes (MAM), are involved in the regulation of the localization of BAX [24] and BCL-2 [25]. Interestingly, components of the outer mitochondrial membrane sorting complex, TOM20 and TOM22, have been found to be involved in BCL-2 [25,26] and BAX [27–29] mitochondria translocation, respectively. However, it should be noted that the alteration of BAX/TOM22 interaction did not impair BAX mitochondrial localization, but rather limited its capacity to promote an efficient permeabilization of the OMM. Another study showed an interaction between the BH3-only protein BIM, one of the main activators of BAX, with TOM (Translocase of Outer Membrane) components but the functional role of this interaction remains unclear [30]. Besides TOM components, an interaction between BAK and SAM (Sorting and Assembly Machinery) components metaxins 1 and 2 was demonstrated, with a possible involvement in the activation of BAK, in association with VDAC2 [31,32]. Other studies suggested that MCL-1 [33,34] interacts with OMM proteins. Although they are not of proteinaceous nature, the well-established interaction between tBID and cardiolipin might also be included in these studies [35,36]. The link between the localization of BCL-2 family members and the dynamics of the interaction between the OMM and other membrane compartments thus requires further investigations.

The yeast *Saccharomyces cerevisiae* is a long-used model for the study of conserved eukaryotic cells functions. Due to its nature of facultative aerobe, it is particularly interesting in studies related to mitochondria. Indeed, opposite to mammalian cells, yeast can survive to dramatic alterations of mitochondrial functions. It is, therefore, possible to investigate the consequences of major mitochondria alterations on other cellular processes. This unique *S. cerevisiae* characteristics led to the design of tools aiming at using it as a model for studying the action of BCL-2 family members on mitochondria [37–39] (for reviews). Although yeast displays several forms of programmed cell death (PCD), these processes do not involve any BCL-2-like proteins, which are absent from the yeast genome. A protein containing a BH3 domain, Ybh3, has been identified [40] and is the same protein as the BAX-Inhibitor protein (Bxi1) that had been previously identified as an ortholog of BAX inhibitors of plants [41]. The deletion of Ybh3/Bxi1 decreased yeast resistance to heat shock, through decreasing the Unfolded Protein Response (UPR) and Ca^{2+} signaling [41]. It also decreased yeast PCD induced by oxidative stress and other stimuli, including the ectopic expression of BAX [40]. Conversely, Ybh3 overexpression induced a yeast PCD that was reportedly sensitive to the ectopic co-expression of BCL-xL [40]. It is likely that at high concentration, Ybh3 and BCL-xL can interact, although it has not been directly demonstrated.

Many experimental conditions have allowed investigators to study different forms of Programmed Cell Death in yeast, which have common features, but also significant differences, with mammalian apoptosis (reviewed in [9]). The heterologous expression

of mammalian BCL-2 family members in yeast was initially designed as a simple tool to investigate interactions between these proteins by the two-hybrid method [42,43]. However, it was quickly observed that the expression of the fusion proteins had functional consequences on yeast growth and viability: indeed, the expression of a fusion protein between BAX and the DNA binding domain LexA inhibited yeast growth and this effect was prevented by the co-expression of a fusion protein between BCL-2 and the trans-activation domain B42 [42]. It was further observed that the same effects on yeast growth could be observed with genuine BAX, BCL-2, and BCL-xL, which could provide information on how these proteins interfere with mitochondria [44–46].

It has also been observed that the ectopic expression of BCL-2 protected yeast cells against oxidative stress [47]. Interestingly, the ectopic expression of BCL-xL protected yeast against cell death but did not decrease the oxidative stress [48], thus suggesting a different action of these anti-apoptotic proteins in yeast. All these observations lead to the development of research studies aiming at using yeast as a model to gain knowledge of mammalian BCL-2, including the identification of new partners of BCL-2 family members [49–51] (for reviews) and more direct studies aiming to understand how BCL-2 family members cooperate to modulate OMM permeability and other processes involved in cell death [37–39,52,53] (for reviews).

In the present review, we will focus more specifically on yeast studies that have aimed at studying processes and proteins that are involved in the subcellular localization of BCL-2 family members, namely pro-apoptotic BAX and anti-apoptotic BCL-xL, and that contribute to the regulation of the dynamics of this localization, which is closely dependent on the dynamics of intracellular membranes.

2. Intrinsic Molecular Determinants of BCL-2 Family Members Localization

The usual subdivision of mammalian BCL-2 family members is based on a combination of their function (pro- or anti-apoptotic) and of their primary structure, i.e., the presence of BCL-2-Homology domains (BH1 to BH4) [54] (for a classic review). This classification distinguishes 3 sub-families:

- Anti-apoptotic proteins, which includes BCL-2, BCL-xL, MCL-1, et al.
- Multidomain pro-apoptotic proteins, which includes BAX, BAK, and BOK.
- BH3-only proteins, which includes BID, BIM, BAD, PUMA, NOXA, et al.

Structural data have demonstrated, without any ambiguity, that anti-apoptotic proteins, multidomain pro-apoptotic proteins, and BH3-only protein BID are structural homologs [55], which thus could be termed as “BCL-2 homologs” (to distinguish them from “BCL-2 family”) [5]. Other BH3-only proteins do not share these structural features. BIM, BAD and BMF are intrinsically disordered proteins that become only partly structured when their BH3 domain is bound to a BCL-2 family partner [56]. This is even more spectacular for PUMA, of which the BH3 domain can bind to its partner MCL-1 even when proline residues are introduced to break its α -helical structure [57]. On this basis, these BH3-only proteins are not structurally related to BCL-2. Proteins carrying a BH3 domain are not always directly involved in the regulation of apoptosis. A typical example is the protein BECLIN-1, which was first identified as a protein interacting with BCL-2 (hence its name) [58,59] but is a major regulator of autophagy, homolog to the yeast protein Atg6 [60]. It is noteworthy that a significant number of proteins with a BH3 domain are regulators of autophagy. Besides the widely characterized BECLIN-1, the protein NIX/BNIP3L has been characterized as a regulator of mitophagy [61,62]. More recently, the previously characterized BCL2L13/RAMBO [63] has been shown to be a functional homolog of yeast mitophagy receptor Atg32 [64].

The analysis got more complicated with the identification of more distantly related proteins with a BH3 domain. A computational analysis of these proteins showed that the BH3 domain could be present in structurally and phylogenetically distant proteins [5]. Both the weaker conservation of BH3 residues and the positioning of the BH3 domain within the whole sequence of these proteins led to the proposal that their BH3 domain

is “non-canonical” and could result from a convergent evolution rather than from the divergence from a common ancestor (unlike BCL-2 homologs) [5].

This does not imply that non-canonical BH3-only proteins do not contribute to the regulation of BCL-2 homologs. Indeed, following overexpression, these domains could interact with BCL2 homologs, albeit with a lower affinity than canonical BH3 domains. As discussed above, the yeast Bxi1/Ybh3 protein, which has a non-canonical BH3 domain [5], can be inhibited by BCL-xL [19].

The functions of BCL-2 homologs involve their interaction with membranes and, more specifically, the outer mitochondrial membrane (OMM). Other proteins with non-canonical BH3 domains, such as Nix and BCL2L13, are also inserted in OMM, although others such as BECLIN-1 and IP3R are in the endosomal network). Interestingly, both BCL-2 and BCL-xL, also display extramitochondrial localization in the ER and the nuclear membrane, with specific, non-apoptotic functions associated [18] (for a review). It is then crucial to understand how these proteins interact with these membranes.

2.1. Role of the Hydrophobic C-Terminal α -Helix BCL-2, BCL-xL, and BAX

Except for BID, BCL-2-like proteins, whether anti- or pro-apoptotic, have a C-terminal α -helix that is largely hydrophobic that was tentatively assimilated to a membrane anchor [65]. It was therefore tempting to assume that this helix was directly responsible for the localization of these proteins to membranes. This has been confirmed, in cellulo, for BCL-xL, for which the C-terminal helix is necessary and sufficient for OMM localization [66]. The C-terminal of BCL-2 is required for membrane localization, but the specific OMM localization also depends on other factors, one of which has been identified as its interaction with the mitochondrial receptor TOM20 [25,26]. Mutants of both BCL-2 and BCL-xL deprived of the C-terminal helix lost their ability to be co-fractionated with any membrane compartments of mammalian cells [66]. However, they might still be recruited to membranes through the interaction with OMM-localized partners (such as BAX) but, in this case, they might not be inserted and may be removed by a chaotropic treatment in the absence of a detergent [66].

When expressed alone in yeast, as in mammalian cells, the anti-apoptotic protein BCL-xL is largely associated with a crude mitochondrial fraction and the deletion of the C-terminal α -helix (BCL-xL Δ C) impaired this association [67]. Interestingly, a single substitution A221R, introducing a positively charged residue within the helix, was sufficient to impair the mitochondrial localization of BCL-xL, both in yeast [68] and in mammalian cells [69]. This single-substituted mutant displayed a strong alteration of its localization, in the sense that it was fully excluded from mitochondria, opposite to BCL-xL Δ C [15]. This was likely due to the fact that its effect on the three-dimensional structure of BCL-xL was less drastic and less subject to side effects, such as the exposure of hydrophobic residues in the protein core that should not normally be exposed.

The localization of BCL-2 in mammalian cells is more shared between different compartments, in accordance with its distinct functions as an inhibitor of BAX (at the mitochondrial level) and as a regulator of Ca^{2+} fluxes (at the ER level) [18] (for review). It is noteworthy that a splicing variant of BCL-2, termed BCL-2 β , lacks the C-terminal α -helix with a short 9 residues sequence instead; however, the localization and function of this isoform remain unclear [70] (for review). When expressed in yeast, BCL-2 also displays multiple localizations, in mitochondria and post-mitochondrial fractions. Interestingly, as in mammalian cells, the mitochondrial localization of human BCL-2 in yeast is increased by the overexpression of yeast or ectopically expressed human TOM20 [25]. Furthermore, a peptide derived from the binding sequence of human TOM20 with BCL-2 can modulate the mitochondrial localization of BCL-2 in yeast [25].

Opposite to BCL-2 and BCL-xL, the localization of BAX in mammalian cells is not predominantly mitochondrial in non-apoptotic cells. After an apoptotic signal is perceived by the cell, the localization of BAX dramatically changes, with an increased mitochondrial localization [71,72]. However, as we will see below, BAX movements between extramito-

chondrial and mitochondrial compartments are not unidirectional, and a dynamic equilibrium of BAX localization between different compartments is maintained. C-terminal anchored OMM-localized proteins have a hydrophobic C-terminal α -helix flanked by positive charges both at their N-side and C-side [73]. BCL-2 family members present this type of motive. However, there are several differences between the pro-apoptotic protein BAX and the anti-apoptotic proteins BCL-xL and BCL-2, in the repartition of charges flanking the hydrophobic segment. The comparison of the behavior of peptides encompassing the C-terminal domains of BCL-2 and BAX showed that BCL-2 C-ter was able to adopt spontaneously a α -helical structure in the presence of PC bilayers (provided they have an appropriate thickness) while BAX C-ter required the presence of negatively charged lipids (PG or PI) to adopt such a structure [74]. The explanation for these differences might rely on the charges: BAX displays a KK doublet on the C-side of the hydrophobic domain and no charge on the N-side. BCL-2 displays a HK sequence on the C-side and a K on the N-side. BCL-xL displays a RK sequence on the C-side and a highly charged sequence ESRKGQERFNR on the N-side. The presence of positively charged residues on the cytosolic side of the hydrophobic helix of BCL-2 and BCL-xL might explain the difference of behavior with BAX, since these charges might stabilize the membrane embedment of this helix by interacting with negatively charged lipid heads.

As a matter of fact, the C-terminal domains of BAX and BCL-xL are not interchangeable: while the C-terminal domain of BCL-xL is able to drive the mitochondrial localization of BAX *in vitro*, the C-terminal domain of BAX is not able to drive the mitochondrial localization of BCL-xL, both in mammalian and yeast mitochondria [75,76].

Another remarkable feature of the C-terminal domain of BAX is the presence of a Serine residue at the position 184 that is the target of several kinases (see below). The deletion of this residue (Δ S184) leads to a protein having a constitutive mitochondrial localization, indicating that this residue may play a crucial role in the localization of the protein [77,78]. Similarly, substitutions S184A or S184V lead to an increased mitochondrial localization [79], while substitutions S184D or S184E led to a decreased mitochondrial localization [80]. These different behaviors also occurred when these mutants are ectopically expressed in yeast [81]. However, the consequences on BAX activity (i.e., the capacity to release cytochrome c) were not quite as expected. Indeed, the actual activities of these BAX mutants were also dependent on their cellular content that depends on their stability [82]. Although BAX-S184V was found to be stable over a time scale of 4 h, BAX-S184D was rapidly degraded. This degradation was largely prevented by the general protease inhibitor PMSF (Phenyl methylsulfonyl fluoride) and by the deletion of Pep4, the yeast ortholog of mammalian Cathepsins, suggesting that this degradation essentially occurs in the vacuolar/lysosomal compartment. Consequently, the cellular content of BAX-S184D was much lower than the cellular content of BAX-S184V. The overall activity of these two mutants, measured at the cellular level, was in fact close to each other, but this was associated with a much higher mitochondrial content of BAX-S184V compared to the mitochondrial content of BAX-S184D. This suggested that the specific activity of BAX-S184D was much higher. This is an important observation showing that the overall capacity of BAX to permeabilize the OMM not only depends on its intrinsic ability to form pores, but also on its cellular content/stability. This is in line with a more recent study made in MEF [83].

Anti-apoptotic proteins, such as BCL-xL, add another level of regulation of the activity of these two BAX mutants [68]. In yeast, the co-expression of BCL-xL had about the same effect on the mitochondrial localization of BAX-S184D and BAXS184A (which behave like BAX-S184V). However, the co-expression of a truncated mutant of BCL-xL, BCL-xL Δ C, which stimulates BAX translocation [15] but not BAX retrotranslocation [15,16], did increase the mitochondrial localization of BAX-S184D (like that of BAX-WT), but not the mitochondrial localization of BAX-S184A. Indeed, BCL-xL was more prone to retain BAX-S184D out from the mitochondrial membrane than to retain BAX-S184A [38]. Taking all the evidence into account, despite having a greater intrinsic activity when measured alone

in yeast, the mutant BAX-S184D might be less active than BAX-S184A when expressed in mammalian cells because of (1) a lower stability/content, (2) a greater susceptibility to be inhibited by BCL-xL than BAX-S184A [68], and (3) a greater retention (by BCL-xL) away from OMM [68]. The differential regulation of BAX localization by BCL-xL and BCL-xL Δ C is schematized in Figure 1.

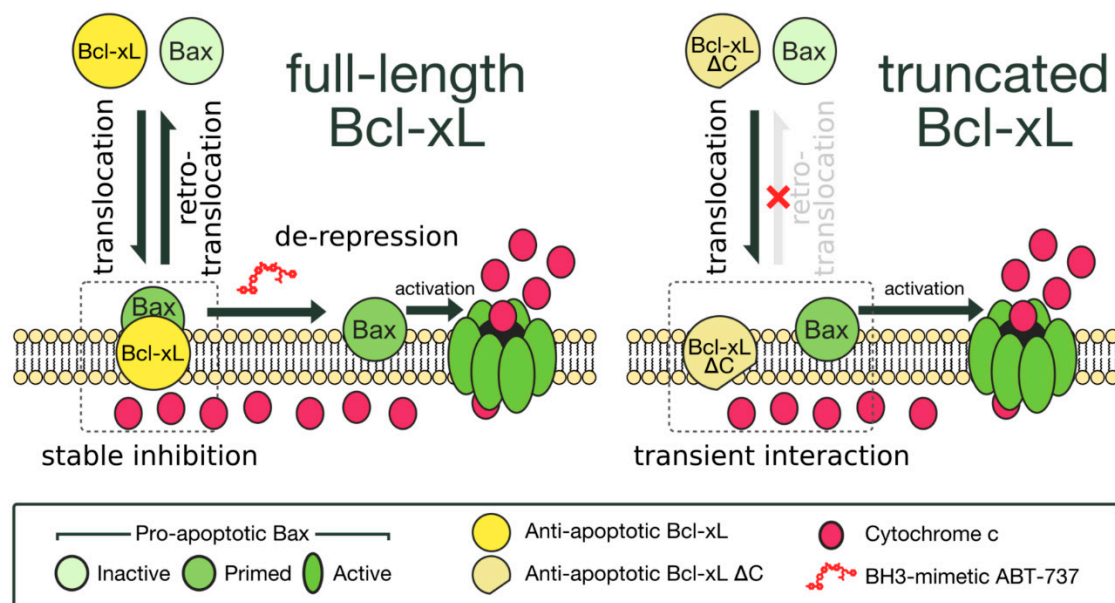


Figure 1. Schematic representation of the differential effect of BCL-xL on BAX dynamics (reproduced from [38]). **Left:** BAX is under a dynamic equilibrium between mitochondria and cytosol, owing to the processes of BCL-xL-driven translocation and retrotranslocation. Mitochondrial BAX is primed but remains inactive because of the interaction with BCL-xL. The addition of a BH3-mimetic (or the expression of a BH3-only partner) enables the derepression of the interaction and the full activation of BAX. **Right:** BCL-xL Δ C stimulates BAX translocation but not BAX retrotranslocation, leading to a higher mitochondrial BAX content. Furthermore, the interaction between BAX and BCL-xL Δ C is weaker than with BCL-xL, and BAX can therefore be activated in the absence of BH3-only protein or BH3 mimetics.

S184 is one of possibly several residues phosphorylatable by survival kinases, such as AKT [84,85] or PKC ζ [86]. AKT activation was shown to prevent apoptosis through the inhibition of BAX mitochondrial relocalization, in accordance with the behavior of the phosphomimetic mutant S184D, which is poorly localized to mitochondria. Interestingly, small molecules able to initiate the same conformational change induced by the dephosphorylation of Ser184 have been identified as potential BAX activators [87].

Different BAX mutants with different levels of mitochondrial localization and activity were expressed in a yeast mutant deleted for Sch9, the ortholog of AKT [88]. The deletion activated both the mitochondrial localization and the capacity of BAX mutants to release cytochrome c (Figure 2). This was in line with the expected inhibitory effect of AKT on BAX. However, the co-expression of a constitutively active mutant of AKT and BAX in yeast led to a rather different figure. AKT induced an increase of cellular BAX content that impacted the mitochondrial BAX content [82]. This effect was related, at least in part, to the phosphorylation of S184, since it did not happen with the non-phosphorylatable mutant BAX-S184V. The increased amount of mitochondrial BAX did induce an increase in the release of cytochrome c, but it was difficult to attribute this effect to an increase of the intrinsic activity (like the one observed with the phosphomimetic mutant BAX-S184D) or the increase of mitochondrial BAX content (like it was observed with BAX-S184V). It should be noted that if AKT actually phosphorylated BAX on Ser184 [82], the hypothesis that other Ser residues are also phosphorylated by this kinase cannot be ruled out. Indeed, some substitutions on Ser or Thr residues of BAX seemed to induce a loss or a gain of activity when expressed alone in yeast, as compared to wild-type BAX (Figure 3).

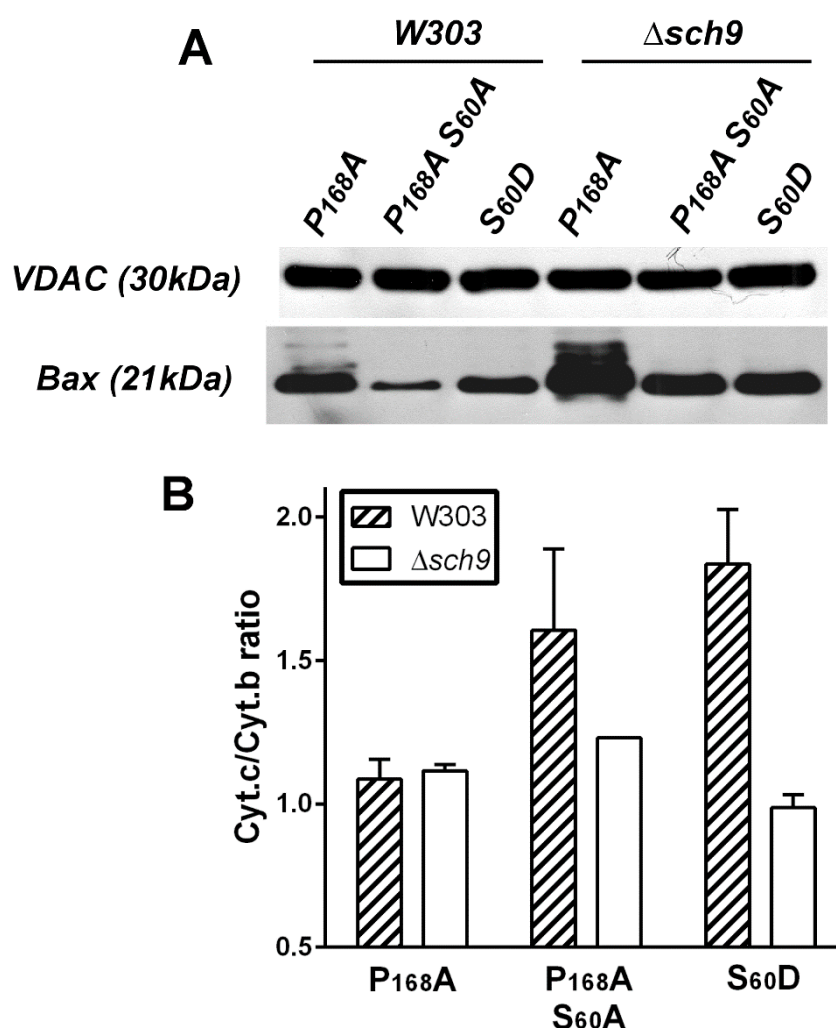


Figure 2. Stimulation of BAX mitochondrial localization and activation in Sch9-deleted yeast. Different BAX mutants were expressed in the wild-type strain W303 or in a mutant carrying a deletion of the gene of the AKT-ortholog Sch9. BAX content was measured in isolated mitochondria with OMM protein VDAC (Voltage Dependent Anion Channel) as a loading control. As previously reported, the cellular content of the three mutants is about the same but they exhibit different mitochondrial localization and level of activity (see Figures 1 and 5 in ref. [81]). The mutant P168A has both a high activity and high mitochondrial localization, and the mutants P168A/S60A and S60D have a weak activity with a weak and intermediate mitochondrial localization, respectively [81]. The P168 residue is in the short loop between $\alpha 8$ and $\alpha 9$ helices and its substitution was shown to stimulate BAX in mammalian cells [89], yeast cells [90], and in vitro [91] by favoring the movement of the $\alpha 9$ helix. The S60 residue is part of a consensus sequence KKLS that might be targeted by a Protein Kinase A, and is in the $\alpha 2$ helix in close proximity to a negatively charged residue D33 located in the $\alpha 1$ helix (see ref. [81] for details). (A) Western-Blots showing the presence of BAX in isolated mitochondria. (B) Redox spectrophotometry measurements of Cyt.c and Cyt.b in mitochondria. Mitochondrial cytochromes absorb light differently in their oxidized and reduced states. The maximal difference between chemically reduced (with Sodium Dithionite) and oxidized (with Potassium Ferricyanide) cytochromes is at 550 nm for cytochrome c and 561 nm for cytochrome b with isosbestic points at 540 and 575 nm., with $\Delta \epsilon$ (reduced *minus* oxidized) = $18,000 \text{ M}^{-1} \cdot \text{cm}^{-1}$ for both cytochromes, allowing the precise calculation of their remaining concentration in mitochondria. Cytochrome b is part of the inner membrane respiratory Complex III and is not released during OMM permeabilization, thus serving as an internal control. The decrease of the ratio mitochondrial Cyt.c/Cyt.b ratio reflects the capacity of BAX to release Cyt.c [15,81].

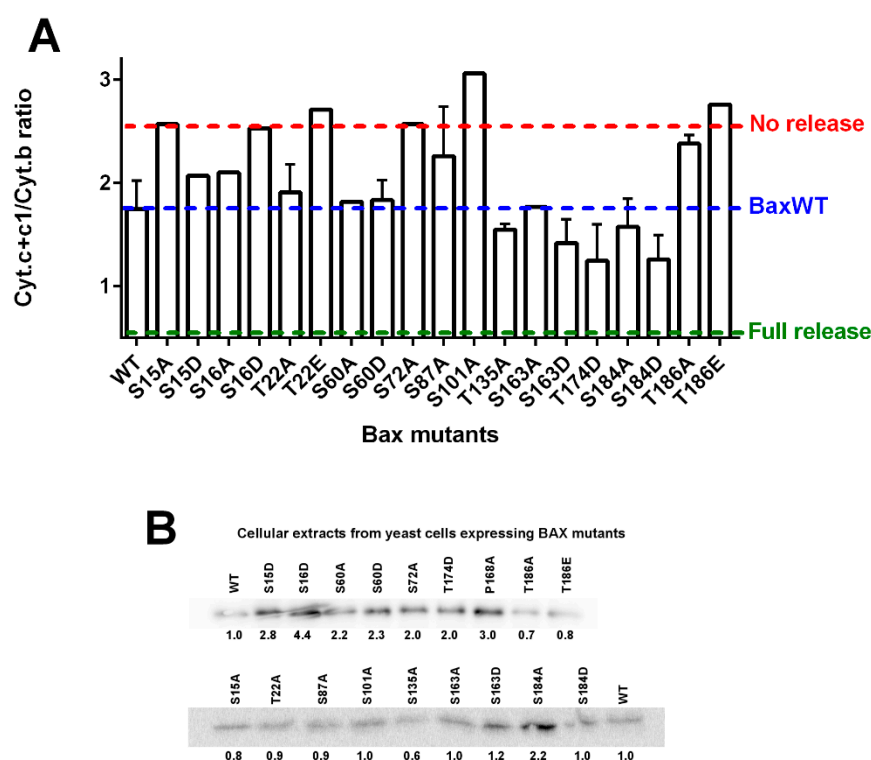


Figure 3. Effect of substitutions of potentially phosphorylatable residues on BAX activity. Different mutants of BAX carrying substitutions of potentially phosphorylatable residues have been expressed in yeast [80]. Potentially phosphorylatable residues were selected based on a mass spectrometry analysis of purified BAX incubated in the presence of AKT or GSK3 β , or known data from the literature. (A) After mitochondria isolation, the mitochondrial ratio Cyt.c+c1/Cyt.b was measured by redox spectrophotometry [15]. The blue dashed line indicates the ratio measured on wild-type BAX. The red dashed line indicates the average value measured in W303 yeast strain not expressing BAX. The green dashed line indicated the theoretical ratio value if all cytochrome was released (corresponding to the ratio Cyt.c1/Cyt.b of 0.5 in Respiratory Complex III). Some mutants are significantly more active than wild-type BAX, such as S184D that has been characterized extensively [81,82], but some mutants also appeared to be less active than wild-type BAX. The level of expression of each BAX mutant might be different (B), but there is no obvious correlation between the content and the capacity to release cytochrome c: for example, the mutant BAX-S16D (inactive) is expressed at about two-times the level of BAX-WT, the mutant BAX-S135A (moderately active) is expressed at about half the level of BAX-WT and the mutant BAX-S184D (very active) is expressed at about the same level as BAX-WT.

2.2. Translocation and Retrotranslocation of BAX

According to the classical view of BAX activation, the protein is retained in the cytosol in non-apoptotic cells, and is translocated to the OMM following an apoptotic signal. The demonstration that BAX could interact with anti-apoptotic proteins BCL-2 and BCL-xL on one hand, and with BH3-only proteins on the other hand is the basis of the two models of BAX activation, termed indirect and direct, respectively [92]. According to the indirect model, BAX and BCL-2 (or BCL-xL) form inactive complexes in the cytosol. Upon apoptosis initiation, BH3-only protein such as BAD become able to interact with BCL-2/BCL-xL thus liberating BAX from its interaction and allowing its mitochondrial translocation. According to the direct model, BH3-proteins such as tBID, PUMA, or BIM directly interact with BAX thus favoring a conformational change allowing its mitochondrial translocation. This has been demonstrated to happen for two BH3-only proteins, BIM [93,94] and PUMA [95]. Although the indirect model was largely supported by experiments in mammalian cells, the actual existence of a direct model for some BH3-only proteins, namely PUMA, was

questioned [68]. The ectopic expression in yeast offered a good tool to confirm that the direct model could have actually occurred: indeed, yeast does not contain any anti-apoptotic proteins resembling BCL-2 and BCL-xL. It was shown that the co-expression of tBID [96] or PUMA [95] actually activated BAX, favoring its mitochondrial translocation, in full accordance with the direct model. Interestingly, the indirect model might also be reproduced in yeast, by co-expressing BAX with BCL-xL and adding the BH3-mimetic molecule ABT-737 to initiate growth arrest [68]. The sequential expression of full-length BAD or BAD-BH3 domain in yeast cells already expressing BAX and BCL-xL (alone or in combination) has also been tested but may require further adjustments in terms of relative levels of expression of the different proteins (Renault and Manon, unpublished data).

Yeast has been also used to evidence an unexpected effect of anti-apoptotic proteins on BAX localization in non-apoptotic cells. In mouse lymphocytes, the overexpression of BCL-2 [14] or BCL-xL [15] has been shown to stimulate the mitochondrial localization of BAX. This rather unexpected effect was confirmed in yeast where the co-expression of BCL-xL did induce a greater mitochondrial localization of BAX than the expression of BAX alone [15]. This effect became even more unexpected when it was demonstrated that BCL-xL (and BCL-2) could stimulate the retrotranslocation of BAX in mammalian cells [13]. Interestingly, it was shown that the C-terminal residues of BCL-xL were needed for stimulating the retrotranslocation of BAX [16]. We observed that BCL-xL Δ C (devoid of the whole C-terminal helix) was able to stimulate BAX mitochondrial localization in yeast even more than full-length BCL-xL [15]. An indirect measurement of BAX retrotranslocation showed that BCL-xL induced BAX retrotranslocation from yeast mitochondria while BCL-xL Δ C did not. It was thus concluded that both BCL-xL and BCL-xL Δ C stimulated the translocation of BAX but that only BCL-xL also induced the retrotranslocation, thus resulting in a higher mitochondrial content when BCL-xL Δ C was present [38].

2.3. BCL-xL-Dependent Stimulation of Translocation/Retrotranslocation v/s BAX Phosphorylation

Since BCL-xL can stimulate both BAX translocation and retrotranslocation, it is likely that an additional regulation event is involved so that the whole process is not a futile cycle. A first indication is given by the fact that a constitutively active mutant of BAX, carrying the mutation P168A changing the mobility of the C-terminal α -helix, cannot be retrotranslocated [15]. This indicates that as soon as BAX is engaged into a process of oligomerization (leading to the permeabilization of the OMM), it is not prone to retrotranslocation anymore. Like we have reported above, the phosphomimetic mutant BAX-S184D is more susceptible to interact with BCL-xL away from the OMM while the non-phosphorylatable mutant BAX-S184V is more susceptible to interact with BCL-xL in the OMM [68]. This suggested that BAX-S184D might be more easily retrotranslocated while BAX-S184V might be more easily translocated (by BCL-xL). This supports the view of a cycle of phosphorylation/dephosphorylation associated with the cycle of translocation/retrotranslocation, with an escape towards BAX oligomerization and activation when apoptosis is initiated (Figure 4).

This model should now be tested through biochemical approaches, to understand how BAX phosphorylation status may influence its capacity to interact with BCL-xL, in soluble and membrane contexts. Both BCL-xL [97,98] and BAX [91,99] can be purified in soluble phase (in the absence of detergent or in the presence of low amounts of detergents or surfactants) or in membrane phases (liposomes, nanodiscs). Reconstitution assays can be combined with the use of mutants and enzymatic and non-enzymatic post-translational modifications to reproduce the different status of the proteins. For example, it has been shown that in addition to phosphorylation [20,100], BCL-xL can also be submitted to monodeamidation [21], thus expanding the number of post-translational modifications susceptible to modulate the interactions between BAX and BCL-xL. A variety of protein/protein interaction methods can be used to test co-immunoprecipitation, proton/deuterium exchange coupled to MS, Fluorescence transfer methods, DEER, etc. . . The critical point is to obtain purified BAX and BCL-xL under a conformation as close as possible as the native

proteins: it is particularly important to verify that they are produced as intact full-length proteins and that tags and additives (detergent, surfactants, bound probes) do not change their behavior.

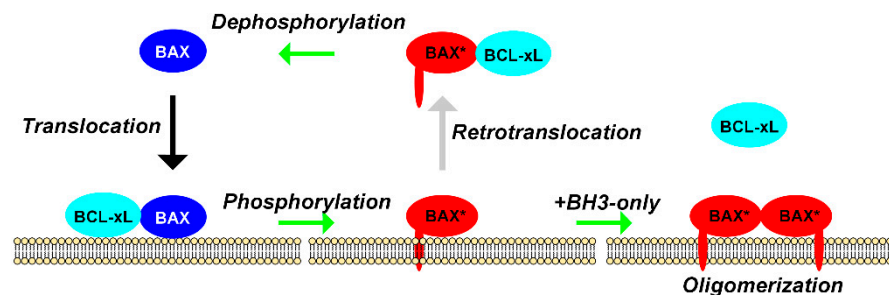


Figure 4. Schematic representation of the link between BAX phosphorylation and Translocation. Phosphorylated BAX (by AKT and other survival kinases) is maintained away from mitochondria while non-phosphorylated BAX is in the OMM, both in yeast and mammalian cells [80,83]. The interaction of BAX with BCL-xL stimulate both BAX translocation [15] and BAX retrotranslocation [13,15]. Heterodimers between phosphomimetic BAX and BCL-xL are more present away from mitochondria while heterodimers between non-phosphorylatable BAX and BCL-xL are more present at the OMM [68]. The release of the interaction between mitochondrial BAX and BCL-xL by BH3-only proteins (or BH3 mimetics) triggers the oligomerization/activation process of BAX [15].

3. Regulators of BCL-2 Family Members Localization

3.1. Mitochondrial Receptors

Most mitochondrial proteins are encoded by nuclear DNA and thus imported into mitochondria through an intricate network of import complexes [101] (for review). The TOM (Translocase of Outer Membrane) and TIM (Translocase of Inner Membrane) complexes are required for protein transport through mitochondrial membranes, sorting into the adequate compartment, and assembly of mitochondrial complexes. The SAM (Sorting and Assembly Machinery) complex is required for the adequate localization of many (but not all) OMM proteins (including TOM components). The question of the involvement of any of these complexes in the mitochondrial localization of BCL-2 family members has been raised as soon as 2002 with evidence, obtained in yeast, that the receptor Tom20 could be involved in the mitochondrial localization of BCL-2 but that the process did not involve the general TOM-dependent pathway [26]. This observation was recently confirmed and extended both in yeast and human cancer cells, by showing that a peptide corresponding to the Tom20 domain interacting with BCL-2 was able to prevent the mitochondrial localization of BCL-2 [25]. It was also shown that the localization of BAX involved another receptor, Tom22, both in mammalian cells and yeast [27]. A similar conclusion has been drawn from observations on the expression of mammalian BAX in *Drosophila* [102]. Here again, the general TOM-dependent pathway was not involved. In fact, Tom22 was not absolutely required for BAX mitochondrial localization, since constitutively mitochondria-localized BAX (such as the Δ S184 mutant) could serve as a receptor to cytosolic wild-type BAX [28]. The conclusion was debated by another study [103] but, most mechanistic experiments of this paper were done with the BAX-S184V mutant, which has the same “receptor-like” behavior as the membrane-constitutive Δ S184 mutant, thus bypassing Tom22 requirement [28]. Ectopic expression in yeast suggested that Tom22 was however needed for the further process of BAX activation to occur: indeed, yeast cells where Tom22 was down-regulated, or incubated in the presence of a competition peptide decreasing the interaction between BAX and Tom22, did accumulate mitochondrial BAX but the protein was barely able to self-assemble into a fully active pore and rather formed inactive dimers [29]. BAX close homolog BAK has been shown to interact with metaxins (SAM components) on the OMM and VDAC2 on the inner membrane: it has been suggested that the binding of BAK with VDAC2 or metaxin 2 maintained BAK under an inactive form, while the interaction with

metaxin 1 was part of BAK activation pathway [31]. Two additional papers have suggested that TOM70 was involved in the mitochondrial localization of MCL-1 [33] and that BIM could interact with both TOM70 and TOM20 [30] without, however, any obvious effect on its mitochondrial localization. To date, no putative receptor for BCL-xL has been identified but, as reported above, the sequences surrounding the C-terminal domain of BCL-xL are clearly different from those of BCL-2 and BAX [74], possibly accounting for the peculiar behavior of this protein.

3.2. Mitochondria-Associated Membranes (MAM) and Mitochondria-ER Contacts (MERC)

MERC are defined as close contacts between OMM and domains of the ER [22] (for review). These ER domains, which have a proteic and lipid composition distinct from the bulk ER have been called MAM [104] stable structure and their number and the nature of their components may change with the physiological status of the cell, reflecting the range of their possible functions. A proteomic analysis involving a proximity-driven biotinylation of proteins surrounding a linker protein between OMM and ER has been reported [23]. The K21 of BAX was found among biotinylated residues near the OMM bait, Tom20 but no other BCL-2 family member was found in the assay (note, however, that cells were not committed to any form of apoptosis). This strongly suggested that in non-apoptotic cells, BAX might be located, at least in part, in MERC (that should be understood as including both the OMM and ER membranes surrounding the contacts).

This was in line with two previous observations indicating that MAM stability could regulate BAX mitochondrial localization. Co-expression of anti-apoptotic viral protein vMIA (Viral Mitochondria-localized Inhibitor of Apoptosis) was shown to induce the accumulation of BAX in MAM, which was followed by a proteosomal degradation of the protein [105]. In another study, the localization of BAX in yeast cells carrying a deletion of a gene encoding the protein Mdm34 (a component of the ERMES complex for ER Mitochondria Encounter Structure, involved in MERC stability), was moderately but significantly affected, with consequences on the capacity to release cytochrome c [24]. It can be hypothesized that BAX transited through the ER and MAM before to reach OMM, in a process requiring MERC stability. The destabilization of these contacts generated by the deletion of Mdm34 might impair BAX transit. Interestingly, ERMES components are also involved in yeast physiological programmed cell death induced by acetic acid [106].

Can this observation be extended to mammalian cells? Opposite to yeast, where the requirement of ERMES complex has been established [107,108] (for reviews), the stability of MAM and MERC in mammalian cells is rather dependent on several complexes, depending on conditions and of the function under study: PS transport, calcium transport, mitochondria dynamics, mitophagy, etc... [104,109] (for reviews). A common feature of MAM stability in yeast and mammals is the regulation by the GTPase Miro1/2 in mammals [110], in plants [111] or Gem1 in yeast [112]. The consequences of the activity of Miro1/2/Gem1 on BAX mitochondrial localization should then be investigated.

It is possible to correlate the role of MAM stability on BAX transit to the process of translocation/retrotranslocation. Indeed, it is more energetically favorable for BAX to shuttle back and forth between two membranes (ER and OMM) than between a membrane phase and a soluble phase (cytosol and OMM). The hypothetic regulation illustrated in Figure 4 can then be completed by assuming that the translocation/retrotranslocation process occurs at ER/mitochondria contact sites (Figure 5). Separate measurement of BAX translocation and retrotranslocation (by using the differential capacity of BCL-xL and BCL-xLΔC to stimulate these two processes) could then be measured under conditions where MAM are destabilized (in a mutant of the ERMES complex in Yeast, or of the complexes involved in MAM stability in Mammals) or, conversely, stabilized with chimeric proteins linking both membranes [113,114].

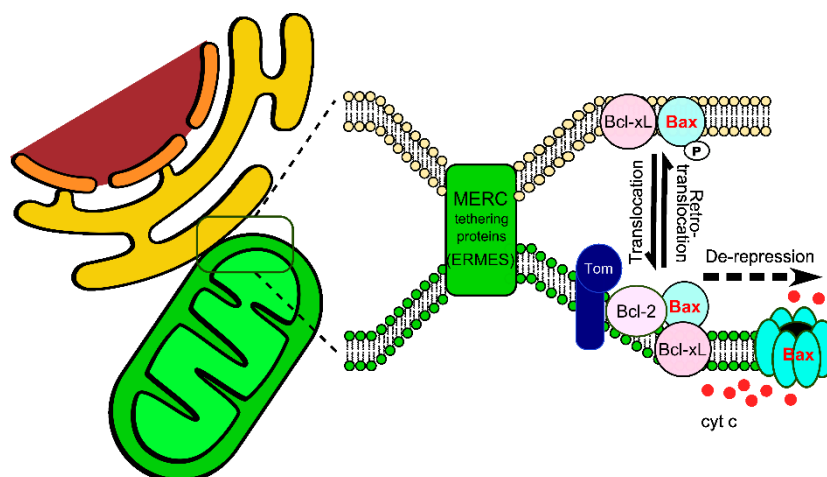


Figure 5. Schematic representation of the involvement of Mitochondria-ER contact sites (MERC) in BAX dynamics. Translocation and retrotranslocation processes are likely favored at MERC. The forced destabilization of the tethering complex ERMES in yeast led to a lower capacity of BAX to localize to the OMM and to promote the release of cytochrome c [24]. Components of the TOM complex Tom20 and Tom22 help the localization and/or the adequate conformation of BCL-2 [25,26] and BAX [27–29], respectively. Derepression by BH3-only proteins or BH3 mimetics allows the release of BAX under its active conformation able to form the pore [15,115].

4. Concluding Remarks

The unusual regulation of BAX localization remains a major question to understand how the apoptotic process is induced (or not) following an apoptotic stimulus such as the one triggered by cancer therapies. This question is directly related to several peculiar properties of cancer cells. For example, it is well established that most cancer cells overexpress anti-apoptotic proteins BCL-2, BCL-xL or else MCL-1. However, they also often overexpress pro-apoptotic proteins BAX or BAK: for example, BAX was reported to be overexpressed (alone or in combination with BCL-2) in about one third of breast cancers [116] or in several pancreatic cancer cell lines [117]. The observations that both BCL-2 and BCL-xL overexpression induced an increase of the mitochondrial localization of BAX was rather unexpected, particularly if one considers that this observation was made at about the same time that the process of BAX retrotranslocation by BCL-xL was reported. In the absence of regulations, this appears as a futile cycle, irrelevant to the implementation of apoptosis. However, if one considers the possible regulations reported above, this appears as a sophisticated process allowing the balancing of the amount and level of activity of BAX in the OMM. Of course, many studies are still required to refine and ultimately confirm or infirm this model of regulation.

It is now well established that BH3-mimetic molecules that decrease the interaction between BAX and BCL-2/BCL-xL not only allow the release of BAX from this inhibiting interaction [118] (for review), but released BAX under a primed conformation ready for insertion and permeabilization of the OMM [15,115]. However, as therapeutic agents, these molecules are not without disadvantages: BCL-xL is required for platelets survival and its unregulated inhibition is a cause of thrombocytopenia [119]. ABT-199 (venetoclax) has been designed to be selective to BCL-2 and thus does not cause thrombocytopenia [120]. However, major adverse effects are still present, implying that this type of treatment requires a careful selection of patients [121]. It might therefore be desirable to identify molecules that would stimulate the transfer of BAX from the ER to the OMM, independently from the phosphorylation status of BAX and/or from its interaction with BCL-2/BCL-xL. For example, one can assume that stabilizing MERC might help the mitochondrial translocation of BAX in cells committed to apoptosis. This might bypass the phosphorylation status of BAX and the interaction with BCL-xL to increase BAX localization at the OMM. Considering that most cancer cells display a constitutively active level of AKT activity [122,123] (for

reviews) and that BAX is one of the multiple targets of this kinase [84,85], combining the action of BH3 mimetics with the stimulation of BAX mitochondrial localization even in the unfavorable context of AKT activation might help to refine therapeutic treatments.

Author Contributions: Conceptualization, draft and preparation of the manuscript have been done by A.R.E., M.G. and S.M. Experiments in Figures 2 and 3 have been done by H.A. and S.M. Final editing has been done by S.M. All authors have read and agreed to the published version of the manuscript.

Funding: The work in the lab of the authors is supported by the CNRS and the University of Bordeaux. A.R.E. is recipient of a PhD fellowship from the Agence Nationale des Bourses du Gabon (ANBG).

Institutional Review Board Statement: Not applicable.

Informed Consent Statement: Not applicable.

Data Availability Statement: Data and material are available on request.

Conflicts of Interest: The authors declare no conflict of interest.

References

1. Cory, S.; Huang, D.C.S.; Adams, J.M. The Bcl-2 family: Roles in cell survival and oncogenesis. *Oncogene* **2003**, *22*, 8590–8607. [\[CrossRef\]](#)
2. Youle, R.J.; Strasser, A. The BCL-2 protein family: Opposing activities that mediate cell death. *Nat. Rev. Mol. Cell Biol.* **2008**, *9*, 47–59. [\[CrossRef\]](#) [\[PubMed\]](#)
3. Kale, J.; Osterlund, E.J.; Andrews, D.W. BCL-2 family proteins: Changing partners in the dance towards death. *Cell Death Differ.* **2018**, *25*, 65–80. [\[CrossRef\]](#) [\[PubMed\]](#)
4. Lanave, C.; Santamaria, M.; Saccone, C. Comparative genomics: The evolutionary history of the Bcl-2 family. *Gene* **2004**, *333*, 71–79. [\[CrossRef\]](#) [\[PubMed\]](#)
5. Aouacheria, A.; De Laval, V.R.; Combet, C.; Hardwick, J.M. Evolution of Bcl-2 homology motifs: Homology versus homoplasy. *Trends Cell Biol.* **2013**, *23*, 103–111. [\[CrossRef\]](#)
6. Aouacheria, A.; Combet, C.; Tompa, P.; Hardwick, J.M. Redefining the BH3 Death Domain as a ‘Short Linear Motif’. *Trends Biochem. Sci.* **2015**, *40*, 736–748. [\[CrossRef\]](#)
7. Banjara, S.; Suraweera, C.D.; Hinds, M.G.; Kvensakul, M. The Bcl-2 Family: Ancient Origins, Conserved Structures, and Divergent Mechanisms. *Biomolecules* **2020**, *10*, 128. [\[CrossRef\]](#)
8. Manara, A.; Imanifard, Z.; Fracasso, L.; Bellin, D.; Crimi, M. Plants expressing murine pro-apoptotic protein Bid do not have enhanced PCD. *BMC Res. Notes* **2020**, *13*, 1–6. [\[CrossRef\]](#) [\[PubMed\]](#)
9. Carmona-Gutierrez, D.; Bauer, M.A.; Zimmermann, A.; Aguilera, A.; Austriaco, N.; Ayscough, K.; Balzan, R.; Bar-Nun, S.; Barrientos, A.; Belenky, P.; et al. Guidelines and recommendations on yeast cell death nomenclature. *Microb. Cell* **2018**, *5*, 4–31. [\[CrossRef\]](#)
10. Suhaili, S.H.; Karimian, H.; Stellato, M.; Lee, T.-H.; Aguilar, M.-I. Mitochondrial outer membrane permeabilization: A focus on the role of mitochondrial membrane structural organization. *Biophys. Rev.* **2017**, *9*, 443–457. [\[CrossRef\]](#)
11. Kalkavan, H.; Green, D.R. MOMP, cell suicide as a BCL-2 family business. *Cell Death Differ.* **2018**, *25*, 46–55. [\[CrossRef\]](#)
12. Moldoveanu, T.; Czabotar, P.E. BAX, BAK, and BOK: A Coming of Age for the BCL-2 Family Effector Proteins. *Cold Spring Harb. Perspect. Biol.* **2020**, *12*, a036319. [\[CrossRef\]](#) [\[PubMed\]](#)
13. Edlich, F.; Banerjee, S.; Suzuki, M.; Cleland, M.M.; Arnoult, D.; Wang, C.; Neutzner, A.; Tjandra, N.; Youle, R.J. Bcl-xL Retrotranslocates Bax from the Mitochondria into the Cytosol. *Cell* **2011**, *145*, 104–116. [\[CrossRef\]](#) [\[PubMed\]](#)
14. Teijido, O.; Dejean, L. Upregulation of Bcl2 inhibits apoptosis-driven BAX insertion but favors BAX relocalization in mitochondria. *FEBS Lett.* **2010**, *584*, 3305–3310. [\[CrossRef\]](#) [\[PubMed\]](#)
15. Renault, T.T.; Teijido, O.; Missire, F.; Ganesan, Y.T.; Velours, G.; Arokium, H.; Beaumatin, F.; Llanos, R.; Athané, A.; Camougrand, N.; et al. Bcl-xL stimulates Bax relocation to mitochondria and primes cells to ABT-737. *Int. J. Biochem. Cell Biol.* **2015**, *64*, 136–146. [\[CrossRef\]](#)
16. Todt, F.; Cakir, Z.; Reichenbach, F.; Youle, R.J.; Edlich, F. The C-terminal helix of Bcl-xL mediates Bax retrotranslocation from the mitochondria. *Cell Death Differ.* **2012**, *20*, 333–342. [\[CrossRef\]](#) [\[PubMed\]](#)
17. Schellenberg, B.; Wang, P.; Keeble, J.A.; Rodriguez-Enriquez, R.; Walker, S.; Owens, T.W.; Foster, F.; Tanianis-Hughes, J.; Brennan, K.; Streuli, C.H.; et al. Bax Exists in a Dynamic Equilibrium between the Cytosol and Mitochondria to Control Apoptotic Priming. *Mol. Cell* **2013**, *49*, 959–971. [\[CrossRef\]](#) [\[PubMed\]](#)
18. Popgeorgiev, N.; Jabbour, L.; Gillet, G. Subcellular Localization and Dynamics of the Bcl-2 Family of Proteins. *Front. Cell Dev. Biol.* **2018**, *6*, 13. [\[CrossRef\]](#) [\[PubMed\]](#)
19. Ruvolo, P.P.; Deng, X.; May, W.S. Phosphorylation of Bcl2 and regulation of apoptosis. *Leukemia* **2001**, *15*, 515–522. [\[CrossRef\]](#) [\[PubMed\]](#)

20. Wang, J.; Beauchemin, M.; Bertrand, R. Phospho-Bcl-xL(Ser62) influences spindle assembly and chromosome segregation during mitosis. *Cell Cycle* **2014**, *13*, 1313–1326. [[CrossRef](#)] [[PubMed](#)]
21. Beaumatin, F.; El Dhaybi, M.; Lasserre, J.-P.; Salin, B.; Moyer, M.P.; Verdier, M.; Manon, S.; Priault, M. N52 monodeamidated Bcl-xL shows impaired oncogenic properties in vivo and in vitro. *Oncotarget* **2016**, *7*, 17129–17143. [[CrossRef](#)]
22. Giacomello, M.; Pellegrini, L. The coming of age of the mitochondria–ER contact: A matter of thickness. *Cell Death Differ.* **2016**, *23*, 1417–1427. [[CrossRef](#)]
23. Kwak, C.; Shin, S.; Park, J.-S.; Jung, M.; Nhung, T.T.M.; Kang, M.-G.; Lee, C.; Kwon, T.-H.; Park, S.K.; Mun, J.Y.; et al. Contact-ID, a tool for profiling organelle contact sites, reveals regulatory proteins of mitochondrial-associated membrane formation. *Proc. Natl. Acad. Sci. USA* **2020**, *117*, 12109–12120. [[CrossRef](#)]
24. Légiot, A.; Céré, C.; Dupoirson, T.; Kaabouni, M.; Camougrand, N.; Manon, S. Mitochondria-Associated Membranes (MAMs) are involved in Bax mitochondrial localization and cytochrome c release. *Microb. Cell* **2019**, *6*, 257–266. [[CrossRef](#)] [[PubMed](#)]
25. Lalier, L.; Mignard, V.; Joalland, M.-P.; Lanoé, D.; Cartron, P.-F.; Manon, S.; Vallette, F.M. TOM20-mediated transfer of Bcl2 from ER to MAM and mitochondria upon induction of apoptosis. *Cell Death Dis.* **2021**, *12*, 1–11. [[CrossRef](#)]
26. Motz, C.; Martin, H.; Krimmer, T.; Rassow, J. Bcl-2 and Porin Follow Different Pathways of TOM-dependent Insertion into the Mitochondrial Outer Membrane. *J. Mol. Biol.* **2002**, *323*, 729–738. [[CrossRef](#)]
27. Bellot, G.; Cartron, P.-F.; Er, E.; Oliver, L.; Juin, P.; Armstrong, L.C.; Bornstein, P.; Mihara, K.; Manon, S.; Vallette, F.M. TOM22, a core component of the mitochondria outer membrane protein translocation pore, is a mitochondrial receptor for the proapoptotic protein Bax. *Cell Death Differ.* **2006**, *14*, 785–794. [[CrossRef](#)] [[PubMed](#)]
28. Cartron, P.-F.; Bellot, G.; Oliver, L.; Grandier-Vazeille, X.; Manon, S.; Vallette, F.M. Bax inserts into the mitochondrial outer membrane by different mechanisms. *FEBS Lett.* **2008**, *582*, 3045–3051. [[CrossRef](#)] [[PubMed](#)]
29. Renault, T.T.; Grandier-Vazeille, X.; Arokium, H.; Velours, G.; Camougrand, N.; Priault, M.; Teijido, O.; Dejean, L.M.; Manon, S. The cytosolic domain of human Tom22 modulates human Bax mitochondrial translocation and conformation in yeast. *FEBS Lett.* **2012**, *586*, 116–121. [[CrossRef](#)] [[PubMed](#)]
30. Frank, D.O.; Dengjel, J.; Wilfling, F.; Kozjak-Pavlovic, V.; Häcker, G.; Weber, A. The Pro-Apoptotic BH3-Only Protein Bim Interacts with Components of the Translocase of the Outer Mitochondrial Membrane (TOM). *PLoS ONE* **2015**, *10*, e0123341. [[CrossRef](#)] [[PubMed](#)]
31. Cartron, P.-F.; Petit, E.; Bellot, G.; Oliver, L.; Vallette, F.M. Metaxins 1 and 2, two proteins of the mitochondrial protein sorting and assembly machinery, are essential for Bak activation during TNF alpha triggered apoptosis. *Cell. Signal.* **2014**, *26*, 1928–1934. [[CrossRef](#)]
32. Petit, E.; Cartron, P.-F.; Oliver, L.; Vallette, F.M. The phosphorylation of Metaxin 1 controls Bak activation during TNF α induced cell death. *Cell. Signal.* **2017**, *30*, 171–178. [[CrossRef](#)]
33. Chou, C.-H.; Lee, R.-S.; Yang-Yen, H.-F. An Internal EELD Domain Facilitates Mitochondrial Targeting of Mcl-1 via a Tom70-dependent Pathway. *Mol. Biol. Cell* **2006**, *17*, 3952–3963. [[CrossRef](#)]
34. Kreimendahl, S.; Rassow, J. The Mitochondrial Outer Membrane Protein Tom70—Mediator in Protein Traffic, Membrane Contact Sites and Innate Immunity. *Int. J. Mol. Sci.* **2020**, *21*, 7262. [[CrossRef](#)] [[PubMed](#)]
35. Lutter, M.; Fang, M.; Luo, X.; Nishijima, M.; Xie, X.-S.; Wang, X. Cardiolipin provides specificity for targeting of tBid to mitochondria. *Nat. Cell Biol.* **2000**, *2*, 754–756. [[CrossRef](#)] [[PubMed](#)]
36. Gonzalez, F.; Pariselli, F.; Dupaigne, P.; Budihardjo, I.I.; Lutter, M.; Antonsson, B.; Diolez, P.; Manon, S.; Martinou, J.-C.; Gubern, M.; et al. tBid interaction with cardiolipin primarily orchestrates mitochondrial dysfunctions and subsequently activates Bax and Bak. *Cell Death Differ.* **2005**, *12*, 614–626. [[CrossRef](#)] [[PubMed](#)]
37. Priault, M.; Camougrand, N.; Kinnally, K.W.; Vallette, F.M.; Manon, S. Yeast as a tool to study Bax/mitochondrial interactions in cell death. *FEMS Yeast Res.* **2003**, *4*, 15–27. [[CrossRef](#)]
38. Renault, T.T.; Dejean, L.M.; Manon, S. A brewing understanding of the regulation of Bax function by Bcl-xL and Bcl-2. *Mech. Ageing Dev.* **2017**, *161*, 201–210. [[CrossRef](#)]
39. Manon, S. Investigating BCL-2 Family Protein Interactions in Yeast. *Adv. Struct. Saf. Stud.* **2018**, *1877*, 93–109. [[CrossRef](#)]
40. Büttner, S.; Ruli, D.; Vögtle, F.-N.; Galluzzi, L.; Moitzi, B.; Eisenberg, T.; Kepp, O.; Habernig, L.; Carmona-Gutierrez, D.; Rockenfeller, P.; et al. A yeast BH3-only protein mediates the mitochondrial pathway of apoptosis. *EMBO J.* **2011**, *30*, 2779–2792. [[CrossRef](#)]
41. Cebulski, J.; Malouin, J.; Pinches, N.; Cascio, V.; Austriaco, N. Yeast Bax Inhibitor, Bxi1p, Is an ER-Localized Protein That Links the Unfolded Protein Response and Programmed Cell Death in *Saccharomyces cerevisiae*. *PLoS ONE* **2011**, *6*, e20882. [[CrossRef](#)]
42. Hanada, M.; Aimé-Sempé, C.; Sato, T.; Reed, J.C. Structure-Function Analysis of Bcl-2 Protein. *J. Biol. Chem.* **1995**, *270*, 11962–11969. [[CrossRef](#)] [[PubMed](#)]
43. Zha, H.; Aimé-Sempé, C.; Sato, T.; Reed, J.C. Proapoptotic Protein Bax Heterodimerizes with Bcl-2 and Homodimerizes with Bax via a Novel Domain (BH3) Distinct from BH1 and BH2. *J. Biol. Chem.* **1996**, *271*, 7440–7444. [[CrossRef](#)]
44. Greenhalf, W.; Stephan, C.; Chaudhuri, B. Role of mitochondria and C-terminal membrane anchor of Bcl-2 in Bax induced growth arrest and mortality in *Saccharomyces cerevisiae*. *FEBS Lett.* **1996**, *380*, 169–175. [[CrossRef](#)]
45. Manon, S.; Chaudhuri, B.; Guérin, M. Release of cytochrome c and decrease of cytochrome c oxidase in Bax-expressing yeast cells, and prevention of these effects by coexpression of Bcl-xL. *FEBS Lett.* **1997**, *415*, 29–32. [[CrossRef](#)]

46. Clow, A.; Greenhalf, W.; Chaudhuri, B. Under respiratory growth conditions, Bcl-x(L) and Bcl-2 are unable to overcome yeast cell death triggered by a mutant Bax protein lacking the membrane anchor. *JBIC J. Biol. Inorg. Chem.* **1998**, *258*, 19–28. [\[CrossRef\]](#) [\[PubMed\]](#)
47. Kane, D.; Sarafian, T.; Anton, R.; Hahn, H.; Gralla, E.; Valentine, J.; Örd, T.; Bredesen, D. Bcl-2 inhibition of neural death: Decreased generation of reactive oxygen species. *Science* **1993**, *262*, 1274–1277. [\[CrossRef\]](#)
48. Trancíková, A.; Weisová, P.; Kiššová, I.; Zeman, I.; Kolarov, J. Production of reactive oxygen species and loss of viability in yeast mitochondrial mutants: Protective effect of Bcl-x. *FEMS Yeast Res.* **2004**, *5*, 149–156. [\[CrossRef\]](#)
49. Greenwood, M.T.; Ludovico, P. Expressing and functional analysis of mammalian apoptotic regulators in yeast. *Cell Death Differ.* **2009**, *17*, 737–745. [\[CrossRef\]](#) [\[PubMed\]](#)
50. Henke, N.; Lisak, D.A.; Schneider, L.; Habicht, J.; Pergande, M.; Methner, A.; Nickel, N. The ancient cell death suppressor BAX inhibitor-1. *Cell Calcium* **2011**, *50*, 251–260. [\[CrossRef\]](#)
51. Silva, R.D.; Manon, S.; Goncalves, J.; Saraiva, L.; Corte-Real, M. The Importance of Humanized Yeast to Better Understand the Role of Bcl-2 Family in Apoptosis: Finding of Novel Therapeutic Opportunities. *Curr. Pharm. Des.* **2011**, *17*, 246–255. [\[CrossRef\]](#) [\[PubMed\]](#)
52. Polcic, P.; Jaká, P.; Mentel, M. Yeast as a tool for studying proteins of the Bcl-2 family. *Microb. Cell* **2015**, *2*, 74–87. [\[CrossRef\]](#)
53. Polcic, P.; Mentel, M. Reconstituting the Mammalian Apoptotic Switch in Yeast. *Genes* **2020**, *11*, 145. [\[CrossRef\]](#)
54. Gross, A.; McDonnell, J.M.; Korsmeyer, S.J. BCL-2 family members and the mitochondria in apoptosis. *Genes Dev.* **1999**, *13*, 1899–1911. [\[CrossRef\]](#)
55. Petros, A.M.; Olejniczak, E.T.; Fesik, S.W. Structural biology of the Bcl-2 family of proteins. *Biochim. Biophys. Acta* **2004**, *1644*, 83–94. [\[CrossRef\]](#)
56. Hinds, M.G.; Smits, C.; Fredericks-Short, R.; Risk, J.M.; Bailey, M.; Huang, D.C.S.; Day, C.L. Bim, Bad and Bmf: Intrinsically unstructured BH3-only proteins that undergo a localized conformational change upon binding to prosurvival Bcl-2 targets. *Cell Death Differ.* **2006**, *14*, 128–136. [\[CrossRef\]](#) [\[PubMed\]](#)
57. Rogers, J.M.; Wong, C.T.; Clarke, J. Coupled Folding and Binding of the Disordered Protein PUMA Does Not Require Particular Residual Structure. *J. Am. Chem. Soc.* **2014**, *136*, 5197–5200. [\[CrossRef\]](#)
58. Liang, X.H.; Kleeman, L.K.; Jiang, H.H.; Gordon, G.; Goldman, J.E.; Berry, G.; Herman, B.; Levine, B. Protection against Fatal Sindbis Virus Encephalitis by Beclin, a Novel Bcl-2-Interacting Protein. *J. Virol.* **1998**, *72*, 8586–8596. [\[CrossRef\]](#)
59. Liang, X.H.; Jackson, S.; Seaman, M.; Brown, K.; Kempkes, B.; Hibshoosh, H.; Levine, B. Induction of autophagy and inhibition of tumorigenesis by beclin 1. *Nat. Cell Biol.* **1999**, *402*, 672–676. [\[CrossRef\]](#)
60. Meléndez, A.; Tallóczy, Z.; Seaman, M.N.J.; Eskelinen, E.-L.; Hall, D.H.; Levine, B. Autophagy Genes Are Essential for Dauer Development and Life-Span Extension in *C. elegans*. *Science* **2003**, *301*, 1387–1391. [\[CrossRef\]](#) [\[PubMed\]](#)
61. Schweers, R.L.; Zhang, J.; Randall, M.S.; Loyd, M.R.; Li, W.; Dorsey, F.C.; Kundu, M.; Opferman, J.T.; Cleveland, J.L.; Miller, J.L.; et al. NIX is required for programmed mitochondrial clearance during reticulocyte maturation. *Proc. Natl. Acad. Sci. USA* **2007**, *104*, 19500–19505. [\[CrossRef\]](#) [\[PubMed\]](#)
62. Sandoval, H.; Thiagarajan, P.; Dasgupta, S.K.; Schumacher, A.; Prchal, J.T.; Chen, M.; Wang, J. Essential role for Nix in autophagic maturation of erythroid cells. *Nat. Cell Biol.* **2008**, *454*, 232–235. [\[CrossRef\]](#) [\[PubMed\]](#)
63. Kataoka, T.; Holler, N.; Micheau, O.; Martinon, F.; Tinel, A.; Hofmann, K.; Tschopp, J. Bcl-rambo, a Novel Bcl-2 Homologue That Induces Apoptosis via Its Unique C-terminal Extension. *J. Biol. Chem.* **2001**, *276*, 19548–19554. [\[CrossRef\]](#)
64. Murakawa, T.; Yamaguchi, O.; Hashimoto, A.; Hikoso, S.; Takeda, T.O.; Oka, T.; Yasui, H.; Ueda, H.; Akazawa, Y.; Nakayama, H.; et al. Bcl-2-like protein 13 is a mammalian Atg32 homologue that mediates mitophagy and mitochondrial fragmentation. *Nat. Commun.* **2015**, *6*, 7527. [\[CrossRef\]](#)
65. García-Sáez, A.J.; Mingarro, I.; Pérez-Payá, E.; Salgado, J. Membrane-Insertion Fragments of Bcl-xL, Bax, and Bid. *Biochemistry* **2004**, *43*, 10930–10943. [\[CrossRef\]](#) [\[PubMed\]](#)
66. Kaufmann, T.; Schlipf, S.; Sanz, J.; Neubert, K.; Stein, R.; Borner, C. Characterization of the signal that directs Bcl-xL, but not Bcl-2, to the mitochondrial outer membrane. *J. Cell Biol.* **2003**, *160*, 53–64. [\[CrossRef\]](#) [\[PubMed\]](#)
67. Priault, M.; Camougrand, N.; Chaudhuri, B.; Manon, S. Role of the C-terminal domain of Bax and Bcl-xL in their localization and function in yeast cells. *FEBS Lett.* **1999**, *443*, 225–228. [\[CrossRef\]](#)
68. Garenne, D.; Renault, T.T.; Manon, S. Bax mitochondrial relocation is linked to its phosphorylation and its interaction with Bcl-xL. *Microb. Cell* **2016**, *3*, 597–605. [\[CrossRef\]](#)
69. Pécot, J.; Maillet, L.; Le Pen, J.; Vuillier, C.; Trécesson, S.D.C.; Fétiveau, A.; Sarosiek, K.A.; Bock, F.J.; Braun, F.; Letai, A.; et al. Tight Sequestration of BH3 Proteins by BCL-xL at Subcellular Membranes Contributes to Apoptotic Resistance. *Cell Rep.* **2016**, *17*, 3347–3358. [\[CrossRef\]](#) [\[PubMed\]](#)
70. Warren, C.F.A.; Wong-Brown, M.W.; Bowden, N.A. BCL-2 family isoforms in apoptosis and cancer. *Cell Death Dis.* **2019**, *10*, 1–12. [\[CrossRef\]](#)
71. Hsu, Y.-T.; Wolter, K.G.; Youle, R.J. Cytosol-to-membrane redistribution of Bax and Bcl-XL during apoptosis. *Proc. Natl. Acad. Sci. USA* **1997**, *94*, 3668–3672. [\[CrossRef\]](#)
72. Wolter, K.G.; Hsu, Y.-T.; Smith, C.L.; Nechushtan, A.; Xi, X.-G.; Youle, R.J. Movement of Bax from the Cytosol to Mitochondria during Apoptosis. *J. Cell Biol.* **1997**, *139*, 1281–1292. [\[CrossRef\]](#)

73. Horie, C.; Suzuki, H.; Sakaguchi, M.; Mihara, K. Characterization of Signal That Directs C-Tail-anchored Proteins to Mammalian Mitochondrial Outer Membrane. *Mol. Biol. Cell* **2002**, *13*, 1615–1625. [\[CrossRef\]](#)
74. Gómez-Fernández, J.C. Functions of the C-terminal domains of apoptosis-related proteins of the Bcl-2 family. *Chem. Phys. Lipids* **2014**, *183*, 77–90. [\[CrossRef\]](#)
75. Tremblais, K.; Oliver, L.; Juin, P.; Le Cabellec, M.T.; Meflah, K.; Vallette, F.M. The C-Terminus of bax Is Not a Membrane Addressing/Anchoring Signal. *Biochem. Biophys. Res. Commun.* **1999**, *260*, 582–591. [\[CrossRef\]](#) [\[PubMed\]](#)
76. Oliver, L.; Priault, M.; Tremblais, K.; LeCabellec, M.-T.; Meflah, K.; Manon, S.; Vallette, F.M. The substitution of the C-terminus of bax by that of bcl-xL does not affect its subcellular localization but abrogates its pro-apoptotic properties. *FEBS Lett.* **2000**, *487*, 161–165. [\[CrossRef\]](#)
77. Suzuki, M.; Youle, R.J.; Tjandra, N. Structure of Bax. *Cell* **2000**, *103*, 645–654. [\[CrossRef\]](#)
78. Martínez-Senac, M.D.M.; Corbalán-García, S.; Gómez-Fernández, J.C. Conformation of the C-Terminal Domain of the Pro-Apoptotic Protein Bax and Mutants and Its Interaction with Membranes. *Biochemistry* **2001**, *40*, 9983–9992. [\[CrossRef\]](#) [\[PubMed\]](#)
79. Peng, R.; Tong, J.-S.; Li, H.; Yue, B.; Zou, F.; Yu, J.; Zhang, L. Targeting Bax interaction sites reveals that only homo-oligomerization sites are essential for its activation. *Cell Death Differ.* **2013**, *20*, 744–754. [\[CrossRef\]](#)
80. Wang, Q.; Sun, S.-Y.; Khuri, F.; Curran, W.J.; Deng, X. Mono- or Double-Site Phosphorylation Distinctly Regulates the Proapoptotic Function of Bax. *PLoS ONE* **2010**, *5*, e13393. [\[CrossRef\]](#)
81. Arokium, H.; Ouerfelli, H.; Velours, G.; Camougrand, N.; Vallette, F.M.; Manon, S. Substitutions of Potentially Phosphorylatable Serine Residues of Bax Reveal How They May Regulate Its Interaction with Mitochondria. *J. Biol. Chem.* **2007**, *282*, 35104–35112. [\[CrossRef\]](#)
82. Simonyan, L.; Renault, T.T.; Novais, M.J.D.C.; Sousa, M.J.; Real, M.C.; Camougrand, N.; Gonzalez, C.; Manon, S. Regulation of Bax/mitochondria interaction by AKT. *FEBS Lett.* **2016**, *590*, 13–21. [\[CrossRef\]](#)
83. Kuwana, T.; King, L.E.; Cosentino, K.; Suess, J.; Garcia-Saez, A.J.; Gilmore, A.P.; Newmeyer, D.D. Mitochondrial residence of the apoptosis inducer BAX is more important than BAX oligomerization in promoting membrane permeabilization. *J. Biol. Chem.* **2020**, *295*, 1623–1636. [\[CrossRef\]](#)
84. Gardai, S.J.; Hildeman, D.A.; Frankel, S.K.; Whitlock, B.B.; Frasch, S.C.; Borregaard, N.; Marrack, P.; Bratton, D.L.; Henson, P.M. Phosphorylation of Bax Ser184 by Akt Regulates Its Activity and Apoptosis in Neutrophils. *J. Biol. Chem.* **2004**, *279*, 21085–21095. [\[CrossRef\]](#)
85. Xin, M.; Deng, X. Nicotine Inactivation of the Proapoptotic Function of Bax through Phosphorylation. *J. Biol. Chem.* **2005**, *280*, 10781–10789. [\[CrossRef\]](#)
86. Xin, M.; Gao, F.; May, W.S.; Flagg, T.; Deng, X. Protein Kinase C ζ Abrogates the Proapoptotic Function of Bax through Phosphorylation. *J. Biol. Chem.* **2007**, *282*, 21268–21277. [\[CrossRef\]](#)
87. Xin, M.; Li, R.; Xie, M.; Park, D.; Owonikoko, T.K.; Sica, G.L.; Corsino, P.E.; Zhou, J.; Ding, C.; White, M.A.; et al. Small-molecule Bax agonists for cancer therapy. *Nat. Commun.* **2014**, *5*, 1–11. [\[CrossRef\]](#)
88. Morano, K.A.; Thiele, D.J. The Sch9 protein kinase regulates Hsp90 chaperone complex signal transduction activity in vivo. *EMBO J.* **1999**, *18*, 5953–5962. [\[CrossRef\]](#) [\[PubMed\]](#)
89. Cartron, P.-F.; Arokium, H.; Oliver, L.; Meflah, K.; Manon, S.; Vallette, F.M. Distinct Domains Control the Addressing and the Insertion of Bax into Mitochondria. *J. Biol. Chem.* **2005**, *280*, 10587–10598. [\[CrossRef\]](#) [\[PubMed\]](#)
90. Arokium, H.; Camougrand, N.; Vallette, F.M.; Manon, S.; He, Q.-M.; Wei, Y.-Q.; Tian, L.; Zhao, X.; Su, J.-M.; Yang, L.; et al. Studies of the Interaction of Substituted Mutants of BAX with Yeast Mitochondria Reveal That the C-terminal Hydrophobic α -Helix Is a Second ART Sequence and Plays a Role in the Interaction with Anti-apoptotic BCL-xL. *J. Biol. Chem.* **2004**, *279*, 52566–52573. [\[CrossRef\]](#) [\[PubMed\]](#)
91. Simonyan, L.; Légiot, A.; Lascu, I.; Durand, G.; Giraud, M.-F.; Gonzalez, C.; Manon, S. The substitution of Proline 168 favors Bax oligomerization and stimulates its interaction with LUVs and mitochondria. *Biochim. Biophys. Acta* **2017**, *1859*, 1144–1155. [\[CrossRef\]](#)
92. Willis, S.N.; Fletcher, J.I.; Kaufmann, T.; Van Delft, M.F.; Chen, L.; Czabotar, P.E.; Ierino, H.; Lee, E.F.; Fairlie, W.D.; Bouillet, P.; et al. Apoptosis Initiated When BH3 Ligands Engage Multiple Bcl-2 Homologs, Not Bax or Bak. *Science* **2007**, *315*, 856–859. [\[CrossRef\]](#) [\[PubMed\]](#)
93. Marani, M.; Tenev, T.; Hancock, D.; Downward, J.; Lemoine, N.R. Identification of Novel Isoforms of the BH3 Domain Protein Bim Which Directly Activate Bax to Trigger Apoptosis. *Mol. Cell. Biol.* **2002**, *22*, 3577–3589. [\[CrossRef\]](#) [\[PubMed\]](#)
94. Gavathiotis, E.; Suzuki, M.; Davis, M.L.; Pitter, K.; Bird, G.H.; Katz, S.G.; Tu, H.-C.; Kim, H.; Cheng, E.H.-Y.; Tjandra, N.; et al. BAX activation is initiated at a novel interaction site. *Nat. Cell Biol.* **2008**, *455*, 1076–1081. [\[CrossRef\]](#)
95. Gallenne, T.; Gautier, F.; Oliver, L.; Hervouet, E.; Noël, B.; Hickman, J.A.; Geneste, O.; Cartron, P.-F.; Vallette, F.M.; Manon, S.; et al. Bax activation by the BH3-only protein Puma promotes cell dependence on antiapoptotic Bcl-2 family members. *J. Cell Biol.* **2009**, *185*, 279–290. [\[CrossRef\]](#) [\[PubMed\]](#)
96. Gonzalvez, F.; Bessoule, J.-J.; Rocchiccioli, F.; Manon, S.; Petit, P.X. Role of cardiolipin on tBid and tBid/Bax synergistic effects on yeast mitochondria. *Cell Death Differ.* **2005**, *12*, 659–667. [\[CrossRef\]](#)
97. Yao, Y.; Nisan, D.; Fujimoto, L.M.; Antignani, A.; Barnes, A.; Tjandra, N.; Youle, R.J.; Marassi, F.M. Characterization of the membrane-inserted C-terminus of cytoprotective BCL-XL. *Protein Expr. Purif.* **2016**, *122*, 56–63. [\[CrossRef\]](#) [\[PubMed\]](#)

98. Yao, Y.; Marassi, F.M. Reconstitution and Characterization of BCL-2 Family Proteins in Lipid Bilayer Nanodiscs. *Methods Mol. Biol.* **2019**, *1877*, 233–246. [[CrossRef](#)] [[PubMed](#)]
99. Dingeldein, A.P.; Lindberg, M.J.; Åden, J.; Zhong, X.; Stoll, R.; Gröbner, G. Bax to the future—A novel, high-yielding approach for purification and expression of full-length Bax protein for structural studies. *Protein Expr. Purif.* **2019**, *158*, 20–26. [[CrossRef](#)]
100. Upreti, M.; Galitovskaya, E.N.; Chu, R.; Tackett, A.J.; Terrano, D.T.; Granell, S.; Chambers, T.C. Identification of the Major Phosphorylation Site in Bcl-xL Induced by Microtubule Inhibitors and Analysis of Its Functional Significance. *J. Biol. Chem.* **2008**, *283*, 35517–35525. [[CrossRef](#)]
101. Pfanner, N.; Warscheid, B.; Wiedemann, N. Mitochondrial proteins: From biogenesis to functional networks. *Nat. Rev. Mol. Cell Biol.* **2019**, *20*, 267–284. [[CrossRef](#)]
102. Colin, J.; Garibal, J.; Mignotte, B.; Guénal, I. The mitochondrial TOM complex modulates bax-induced apoptosis in *Drosophila*. *Biochem. Biophys. Res. Commun.* **2009**, *379*, 939–943. [[CrossRef](#)] [[PubMed](#)]
103. Ross, K.; Rudel, T.; Kozjak-Pavlovic, V. TOM-independent complex formation of Bax and Bak in mammalian mitochondria during TNF α -induced apoptosis. *Cell Death Differ.* **2009**, *16*, 697–707. [[CrossRef](#)] [[PubMed](#)]
104. Vance, J.E. MAM (mitochondria-associated membranes) in mammalian cells: Lipids and beyond. *Biochim. Biophys. Acta* **2014**, *1841*, 595–609. [[CrossRef](#)] [[PubMed](#)]
105. Zhang, A.; Hildreth, R.L.; Colberg-Poley, A.M. Human Cytomegalovirus Inhibits Apoptosis by Proteasome-Mediated Degradation of Bax at Endoplasmic Reticulum-Mitochondrion Contacts. *J. Virol.* **2013**, *87*, 5657–5668. [[CrossRef](#)] [[PubMed](#)]
106. Martins, V.M.; Fernandes, T.R.; Lopes, D.; Afonso, C.B.; Domingues, M.R.; Côrte-Real, M.; Sousa, M.J. Contacts in Death: The Role of the ER–Mitochondria Axis in Acetic Acid-Induced Apoptosis in Yeast. *J. Mol. Biol.* **2019**, *431*, 273–288. [[CrossRef](#)]
107. Michel, A.H.; Kornmann, B. The ERMES complex and ER–mitochondria connections. *Biochem. Soc. Trans.* **2012**, *40*, 445–450. [[CrossRef](#)]
108. Lang, A.; Peter, A.T.J.; Kornmann, B. ER–mitochondria contact sites in yeast: Beyond the myths of ERMES. *Curr. Opin. Cell Biol.* **2015**, *35*, 7–12. [[CrossRef](#)] [[PubMed](#)]
109. Vance, J.E. Phospholipid Synthesis and Transport in Mammalian Cells. *Traffic* **2014**, *16*, 1–18. [[CrossRef](#)]
110. Modi, S.; López-Doménech, G.; Halff, E.F.; Covill-Cooke, C.; Ivankovic, D.; Melandri, D.; Arancibia-Cárcamo, I.L.; Burden, J.J.; Lowe, A.R.; Kittler, J.T. Miro clusters regulate ER-mitochondria contact sites and link cristae organization to the mitochondrial transport machinery. *Nat. Commun.* **2019**, *10*, 1–15. [[CrossRef](#)] [[PubMed](#)]
111. White, R.R.; Lin, C.; Leaves, I.; Castro, I.G.; Metz, J.; Bateman, B.C.; Botchway, S.W.; Ward, A.D.; Ashwin, P.; Sparkes, I. Miro2 tethers the ER to mitochondria to promote mitochondrial fusion in tobacco leaf epidermal cells. *Commun. Biol.* **2020**, *3*, 1–8. [[CrossRef](#)]
112. Kornmann, B.; Osman, C.; Walter, P. The conserved GTPase Gem1 regulates endoplasmic reticulum-mitochondria connections. *Proc. Natl. Acad. Sci. USA* **2011**, *108*, 14151–14156. [[CrossRef](#)] [[PubMed](#)]
113. Kornmann, B.; Currie, E.; Collins, S.R.; Schuldiner, M.; Nunnari, J.; Weissman, J.S.; Walter, P. An ER-Mitochondria Tethering Complex Revealed by a Synthetic Biology Screen. *Science* **2009**, *325*, 477–481. [[CrossRef](#)]
114. Csordás, G.; Várnai, P.; Golenár, T.; Roy, S.; Purkins, G.; Schneider, T.G.; Balla, T.; Hajnóczky, G. Imaging Interorganelle Contacts and Local Calcium Dynamics at the ER-Mitochondrial Interface. *Mol. Cell* **2010**, *39*, 121–132. [[CrossRef](#)]
115. Gautier, F.; Guillemin, Y.; Cartron, P.-F.; Gallenne, T.; Cauquil, N.; Le Diguarher, T.; Casara, P.; Vallette, F.M.; Manon, S.; Hickman, J.A.; et al. Bax Activation by Engagement with, Then Release from, the BH3 Binding Site of Bcl-xL. *Mol. Cell. Biol.* **2010**, *31*, 832–844. [[CrossRef](#)] [[PubMed](#)]
116. Dimitrakakis, C.; Konstadoulakis, M.; Messaris, E.; Kymionis, G.; Karayannis, M.; Panoussopoulos, D.; Michalas, S.; Androulakis, G. Molecular markers in breast cancer: Can we use c-erbB-2, p53, bcl-2 and bax gene expression as prognostic factors? *Breast* **2002**, *11*, 279–285. [[CrossRef](#)] [[PubMed](#)]
117. Schniewind, B.; Christgen, M.; Kurdow, R.; Haye, S.; Kremer, B.; Kalthoff, H.; Ungefroren, H. Resistance of pancreatic cancer to gemcitabine treatment is dependent on mitochondria-mediated apoptosis. *Int. J. Cancer* **2004**, *109*, 182–188. [[CrossRef](#)] [[PubMed](#)]
118. Merino, D.; Kelly, G.L.; Lessene, G.; Wei, A.H.; Roberts, A.W.; Strasser, A. BH3-Mimetic Drugs: Blazing the Trail for New Cancer Medicines. *Cancer Cell* **2018**, *34*, 879–891. [[CrossRef](#)]
119. Rudin, C.M.; Hann, C.L.; Garon, E.B.; De Oliveira, M.R.; Bonomi, P.D.; Camidge, D.R.; Chu, Q.; Giaccone, G.; Khaira, D.; Ramalingam, S.S.; et al. Phase II Study of Single-Agent Navitoclax (ABT-263) and Biomarker Correlates in Patients with Relapsed Small Cell Lung Cancer. *Clin. Cancer Res.* **2012**, *18*, 3163–3169. [[CrossRef](#)] [[PubMed](#)]
120. Souers, A.J.; Levenson, J.D.; Boghaert, E.R.; Ackler, S.L.; Catron, N.D.; Chen, J.; Dayton, B.D.; Ding, H.; Enschede, S.H.; Fairbrother, W.J.; et al. ABT-199, a potent and selective BCL-2 inhibitor, achieves antitumor activity while sparing platelets. *Nat. Med.* **2013**, *19*, 202–208. [[CrossRef](#)]
121. Kumar, S.K.; Harrison, S.J.; Cavo, M.; de la Rubia, J.; Popat, R.; Gasparetto, C.; Hungria, V.; Salwender, H.; Suzuki, K.; Kim, I.; et al. Venetoclax or placebo in combination with bortezomib and dexamethasone in patients with relapsed or refractory multiple myeloma (BELLINI): A randomised, double-blind, multicentre, phase 3 trial. *Lancet Oncol.* **2020**, *21*, 1630–1642. [[CrossRef](#)]
122. Kandel, E.S.; Hay, N. The Regulation and Activities of the Multifunctional Serine/Threonine Kinase Akt/PKB. *Exp. Cell Res.* **1999**, *253*, 210–229. [[CrossRef](#)] [[PubMed](#)]
123. Nicholson, K.M.; Anderson, N.G. The protein kinase B/Akt signalling pathway in human malignancy. *Cell. Signal.* **2002**, *14*, 381–395. [[CrossRef](#)]