

Fig. 1. In situ photographs of the investigated poecilosclerids. (a) *Crellomima imparidens* ; (b) *Hymedesmia irregularis*

159x54mm (300 x 300 DPI)

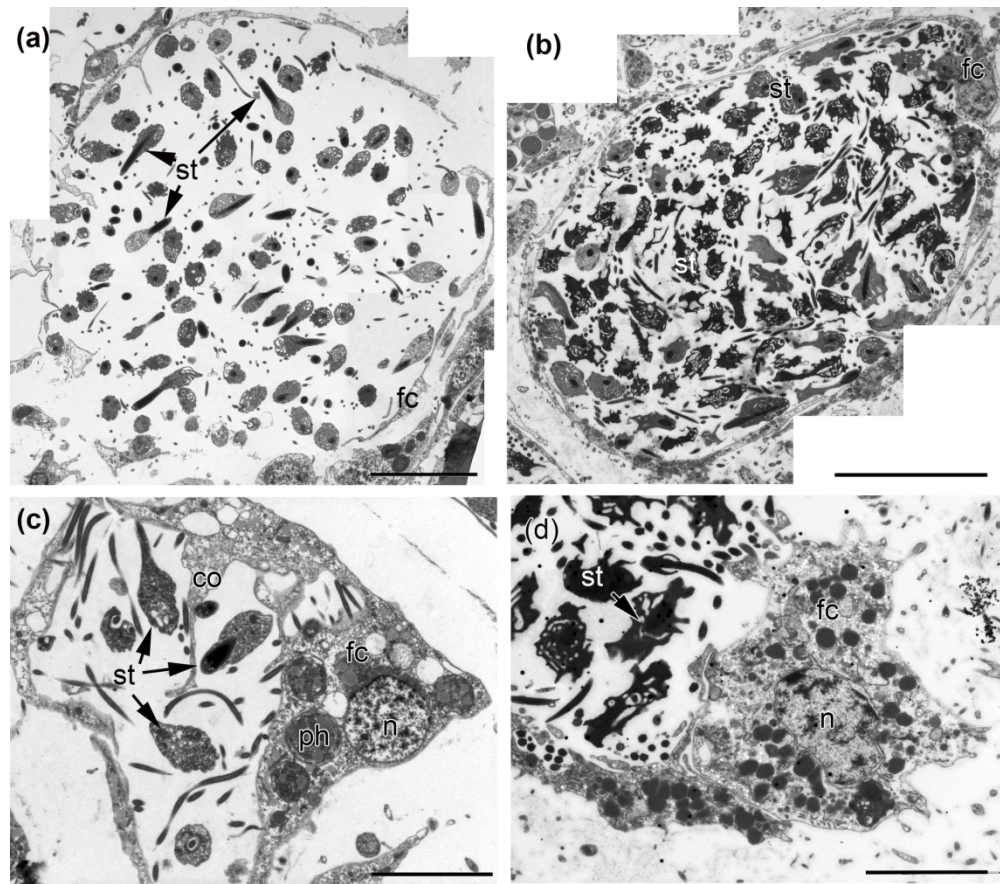


Fig. 2. TEM micrographs of spermatid cysts of investigated species. (a) The cyst with early spermatids in *Crellomima imparidens*. (b) The cyst in *Hymedesmia irregularis*. (c) The cyst with later spermatids and spermatozoa in *C. imparidens*. (d) The cyst with later spermatids in *H. irregularis*

173x152mm (300 x 300 DPI)

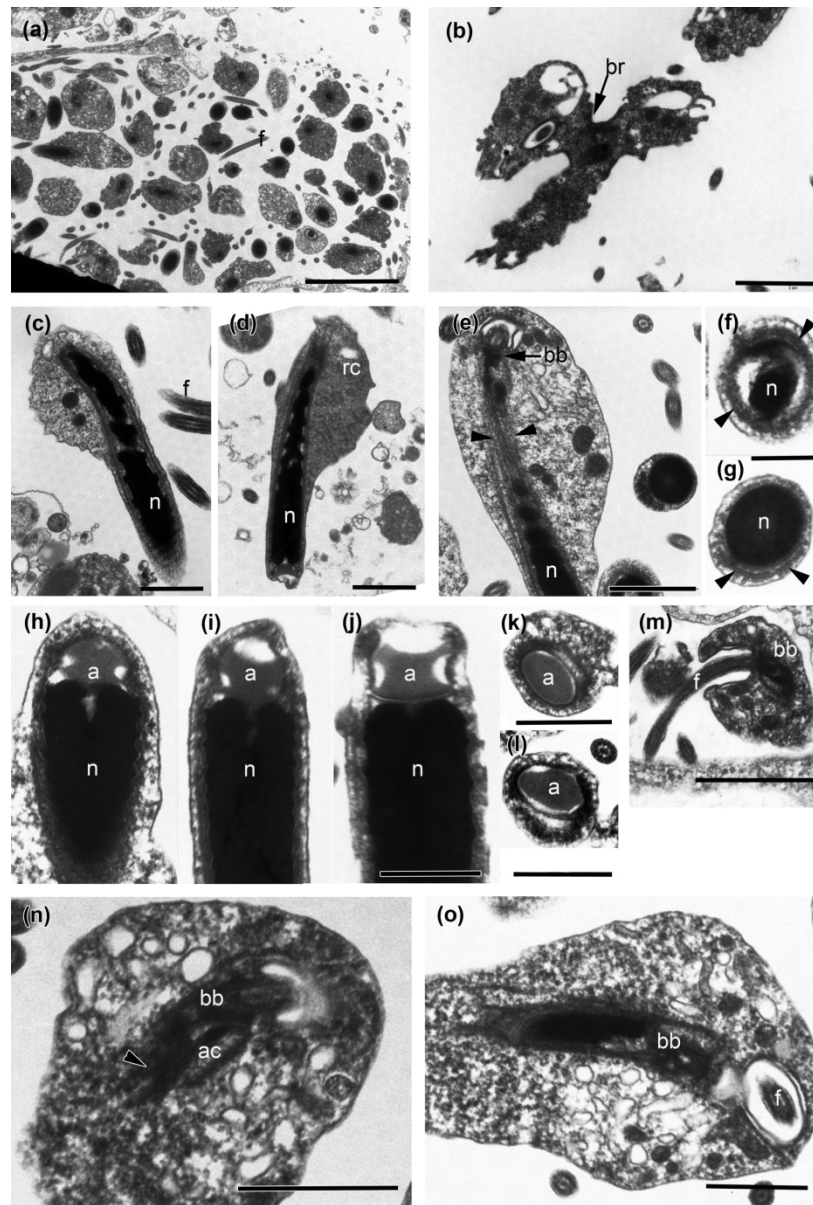


Fig. 3. TEM images of spermiogenesis in *Crellomima imparidens*. (a) Early spermatids in the cyst. (b) Spermatids connected through cytoplasmic bridges (br). (c, d) Longitudinal section of the spermatids at the later stages during cells stretching and the nuclei twisting. (e) Longitudinal section of the basal part of sperm, showing the microtubules (arrowheads) begin from the basal body of the axoneme and are uniformly extending along the nucleus. (f, g) Cross-section of the sperms at the basal (f) and central (g) parts showing the microtubules (arrowheads) manchette surrounding the nucleus. (h- j) Longitudinal sections of the apical part of sperms with the acrosome. (k, l) Cross-sections of the acrosome. (m) Cytoplasm depression at the base of sperm flagellum. (n, o) Kinetid of sperm axoneme with basal body (bb), accessory centriole (ac) and the short rootlet (arrowhead).

183x269mm (300 x 300 DPI)

1  
2  
3  
4  
5  
6  
7  
8  
9  
10  
11  
12  
13  
14  
15  
16  
17  
18  
19  
20  
21  
22  
23  
24  
25  
26  
27  
28  
29  
30  
31  
32  
33  
34  
35  
36  
37  
38  
39  
40  
41  
42  
43  
44  
45  
46  
47  
48  
49  
50  
51  
52  
53  
54  
55  
56  
57  
58  
59  
60

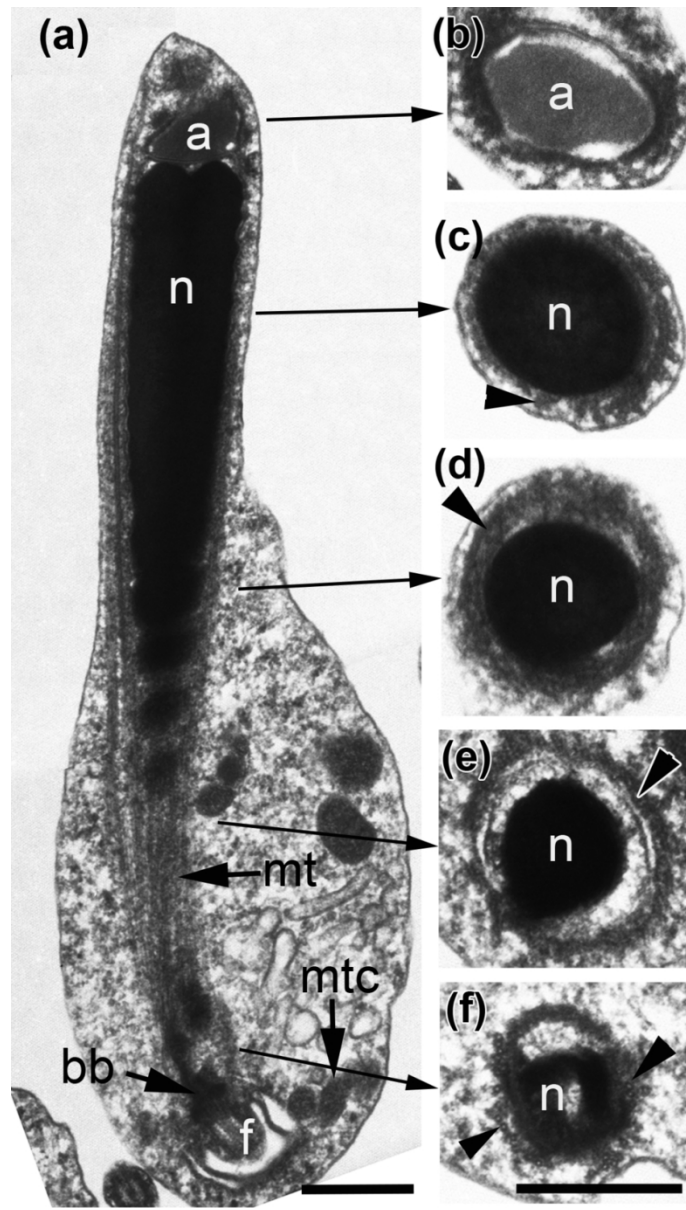
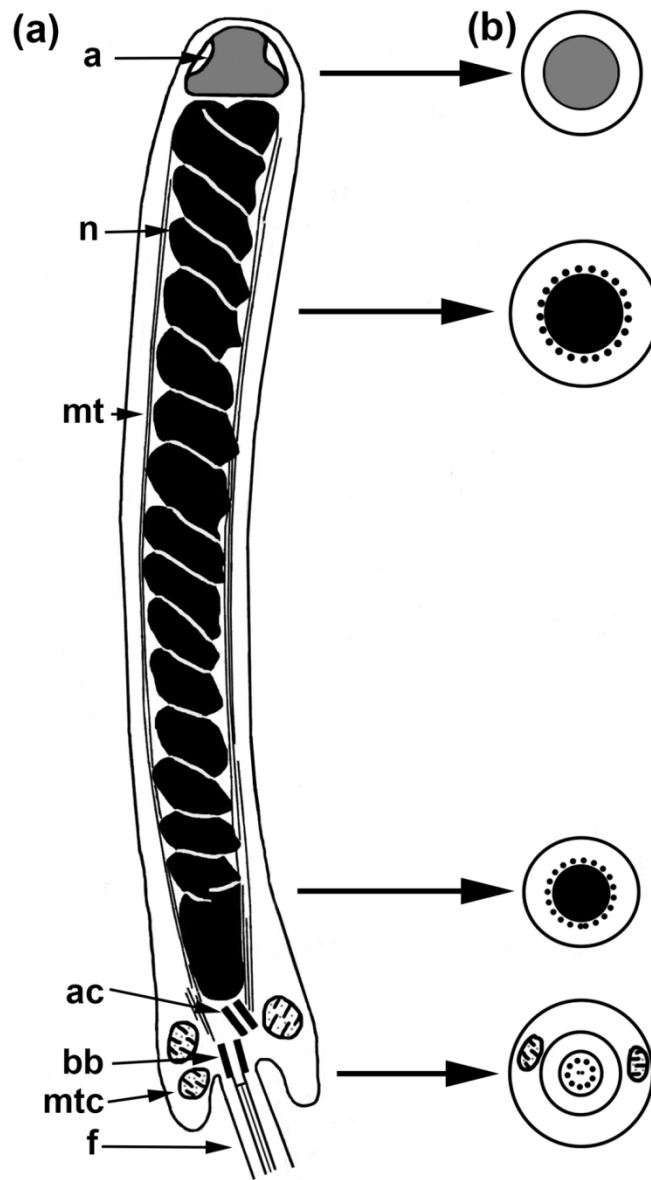


Fig. 4. Longitudinal (a) and corresponding cross-sections (b-f) of sperm in *Crellomima imparidens*.

80x140mm (300 x 300 DPI)



45 Fig. 5. Schematic drawing of *Crellomima imparidens* spermatozoon. (a) Longitudinal section. (b) Cross and  
46 longitudinal section of the apical part of sperm

47 109x169mm (300 x 300 DPI)

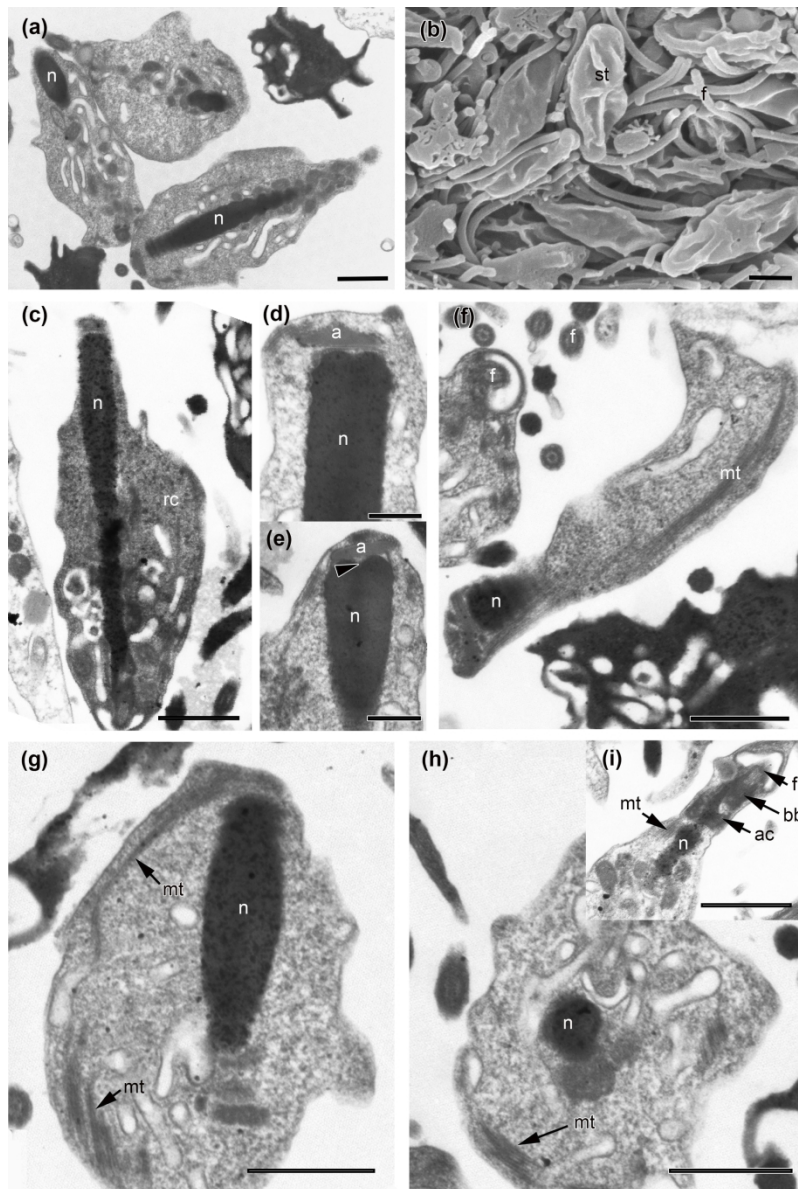


Fig. 6. Spermiogenesis in *Hymedesmia irregularis*. (a) Early spermatids of *Hymedesmia irregularis*. (b, c) Spermatids at the late stages with an elongated spiral-bound nucleus (c). (d, e) Apical part of the nuclei in late spermatids with small depression (arrowheads) and an acrosome. (f-h) Longitudinal (f, g) and cross-sections of spermatids, showing the bundles of microtubules stretches along the long axis of the cell. (i) Kinetid of sperm axoneme with basal body (bb), accessory centriole (ac); the microtubule bundle starts from the axoneme's kinetid (arrowheads).

180x271mm (300 x 300 DPI)

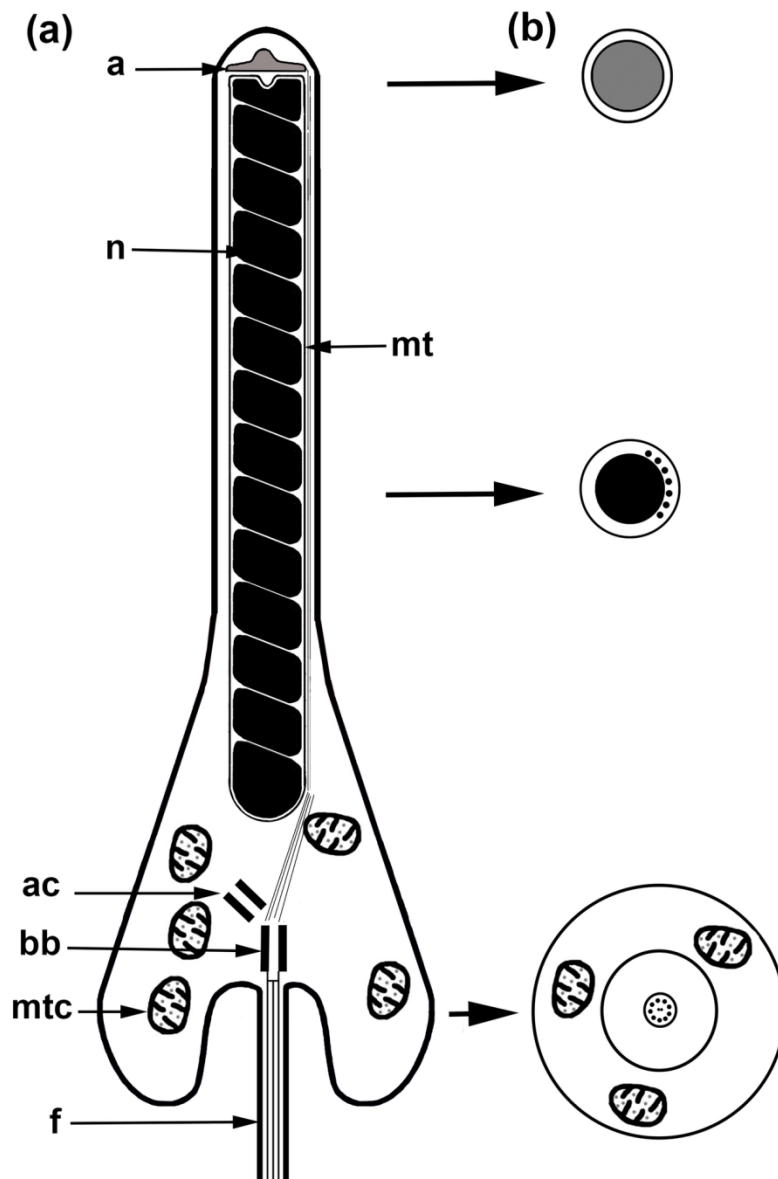


Fig. 7. Schematic drawing of *Hymedesmia irregularis* spermatozoon. (a) Longitudinal section. (b) Cross and longitudinal section of the apical part of sperm.

120x169mm (300 x 300 DPI)