



## The nuclear receptor REV-ERB $\alpha$ is implicated in the alteration of $\beta$ -cell autophagy and survival under diabetogenic conditions

Matthew Brown, Damien Laouteouet, Morgane Delobel, Orianne Villard, Christophe Broca, Gyslaine Bertrand, Anne Wojtusciszyn, Stéphane Dalle, Magalie A Ravier, Aleksey Matveyenko, et al.

### ► To cite this version:

Matthew Brown, Damien Laouteouet, Morgane Delobel, Orianne Villard, Christophe Broca, et al.. The nuclear receptor REV-ERB $\alpha$  is implicated in the alteration of  $\beta$ -cell autophagy and survival under diabetogenic conditions. *Cell Death and Disease*, 2022, 13 (4), pp.353. 10.1038/s41419-022-04767-z . hal-03647414

**HAL Id: hal-03647414**

**<https://hal.science/hal-03647414>**

Submitted on 2 Jun 2022

**HAL** is a multi-disciplinary open access archive for the deposit and dissemination of scientific research documents, whether they are published or not. The documents may come from teaching and research institutions in France or abroad, or from public or private research centers.

L'archive ouverte pluridisciplinaire **HAL**, est destinée au dépôt et à la diffusion de documents scientifiques de niveau recherche, publiés ou non, émanant des établissements d'enseignement et de recherche français ou étrangers, des laboratoires publics ou privés.



Distributed under a Creative Commons Attribution 4.0 International License

## ARTICLE OPEN



# The nuclear receptor REV-ERBa is implicated in the alteration of $\beta$ -cell autophagy and survival under diabetogenic conditions

Matthew R. Brown<sup>1</sup>, Damien Laouteuet<sup>2</sup>, Morgane Delobel<sup>2</sup>, Orianne Villard<sup>3,4</sup>, Christophe Broca<sup>3</sup>, Gyslaine Bertrand<sup>2</sup>, Anne Wojtuszczy<sup>2,3,4</sup>, Stéphane Dalle<sup>2</sup>, Magalie A. Ravier<sup>1,2</sup>, Aleksey V. Matveyenko<sup>1,5,6</sup> and Safia Costes<sup>1,2,6</sup>

© The Author(s) 2022

Pancreatic  $\beta$ -cell failure in type 2 diabetes mellitus (T2DM) is associated with impaired regulation of autophagy which controls  $\beta$ -cell development, function, and survival through clearance of misfolded proteins and damaged organelles. However, the mechanisms responsible for defective autophagy in T2DM  $\beta$ -cells remain unknown. Since recent studies identified circadian clock transcriptional repressor REV-ERBa as a novel regulator of autophagy in cancer, in this study we set out to test whether REV-ERBa-mediated inhibition of autophagy contributes to the  $\beta$ -cell failure in T2DM. Our study provides evidence that common diabetogenic stressors (e.g., glucotoxicity and cytokine-mediated inflammation) augment  $\beta$ -cell REV-ERBa expression and impair  $\beta$ -cell autophagy and survival. Notably, pharmacological activation of REV-ERBa was shown to phenocopy effects of diabetogenic stressors on the  $\beta$ -cell through inhibition of autophagic flux, survival, and insulin secretion. In contrast, negative modulation of REV-ERBa was shown to provide partial protection from inflammation and glucotoxicity-induced  $\beta$ -cell failure. Finally, using bioinformatic approaches, we provide further supporting evidence for augmented REV-ERBa activity in T2DM human islets associated with impaired transcriptional regulation of autophagy and protein degradation pathways. In conclusion, our study reveals a previously unexplored causative relationship between REV-ERBa expression, inhibition of autophagy, and  $\beta$ -cell failure in T2DM.

*Cell Death and Disease* (2022)13:353; <https://doi.org/10.1038/s41419-022-04767-z>

## INTRODUCTION

Type 2 diabetes mellitus (T2DM) is a major public health problem with more than 400 million people affected in the world. This chronic metabolic disorder is characterized by hyperglycemia secondary to the decline of  $\beta$ -cell secretory function and mass (e.g.,  $\beta$ -cell failure) and is usually accompanied by a reduced sensitivity to insulin. The  $\beta$ -cell functional failure and cell deficit in T2DM are attributed in part to  $\beta$ -cell's exposure to a variety of intracellular and extracellular pro-diabetogenic stressors which include (but not limited to) proteotoxicity, chronic hyperglycemia and hyperlipidemia, and/or low-grade inflammation. Although these diabetogenic stressors promote  $\beta$ -cell failure in T2DM with some mechanistic differences, they commonly appear to alter the protein degradation pathway macroautophagy (hereafter referred to as autophagy) thus contributing to the induction of  $\beta$ -cell dysfunction and apoptosis [1–5].

Indeed, long-lived post-mitotic secretory cells, such as  $\beta$ -cells, bear a high burden of protein synthesis and folding and as such require robust protein quality control machinery for cellular function and survival [6]. Thus, autophagy plays a key role in the clearance of misfolded/ubiquitinated proteins, damaged organelles, and oligomerization-prone proteins to sustain intracellular homeostasis and metabolic functions [7]. In this process, cytosolic

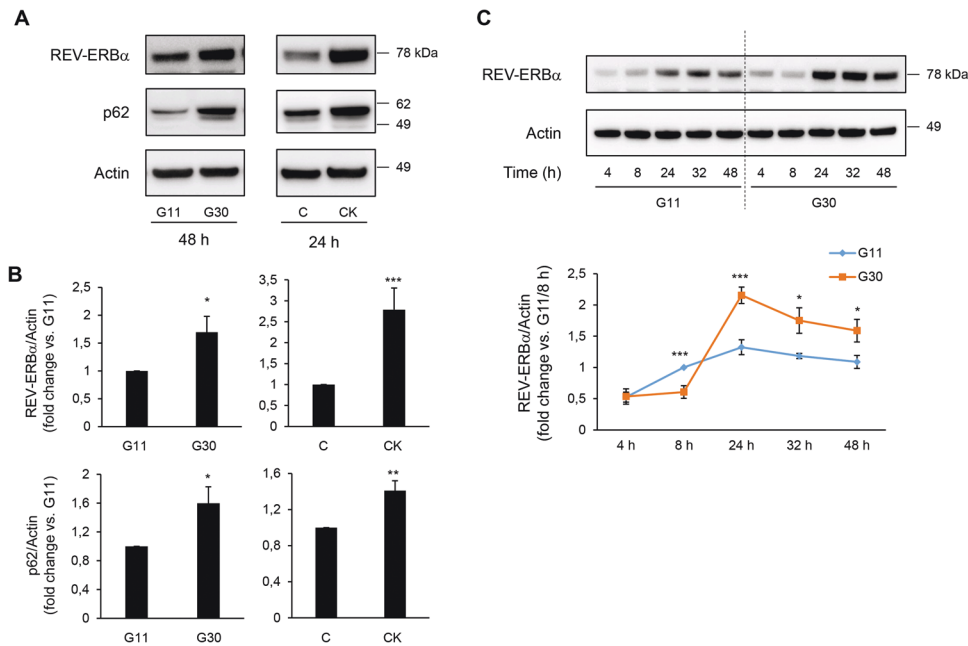
components are engulfed by autophagosomes that fuse with lysosomes to allow the degradation of the contents by lysosomal enzymes. Importantly, lack of  $\beta$ -cell autophagy leads to diabetes in transgenic mice [8–10] and altered autophagy is evidenced in  $\beta$ -cells of humans with T2DM [11]. Despite increasing evidence that impaired autophagy contributes to the pathophysiology of  $\beta$ -cell failure in T2DM, the mechanism responsible for defective autophagy is not fully understood.

Accumulating evidence points to the importance of the circadian clock for the proper regulation of  $\beta$ -cell secretory function,  $\beta$ -cell response to diabetogenic stressors, and  $\beta$ -cell survival and proliferation [12, 13]. The intracellular molecular clock machinery is comprised of key transcriptional activators CLOCK and its heterodimeric partner BMAL1 (encoded by *ARNTL*), and repressor genes that encode period (*PER1,2*) and Cryptochrome (*CRY1,2*) proteins [14]. Secondary regulatory loops involving nuclear receptors REV-ERBa/ $\beta$  (encoded by *NR1D1* and 2) and RORa/ $\beta$  (encoded by *NR1F1* and 2) provide molecular stabilization by acting as respective repressors and activators of *BMAL1* [15] and also play a role in the integration of the circadian clock with key cellular processes such as substrate metabolism, mitochondrial function, and differentiation [16]. Most notably, recent studies have revealed a novel role for the nuclear receptor REV-

<sup>1</sup>Department of Physiology and Biomedical Engineering, Mayo Clinic School of Medicine, Mayo Clinic, Rochester, MN, USA. <sup>2</sup>Institute of Functional Genomics, University of Montpellier, CNRS, INSERM, Montpellier, France. <sup>3</sup>Laboratory of Cell Therapy for Diabetes (LTCD), PRIMS facility, Institute for Regenerative Medicine and Biotherapy (IRMB), University hospital of Montpellier, Montpellier, France. <sup>4</sup>Department of Endocrinology, Diabetes, and Nutrition, University Hospital of Montpellier, Montpellier, France. <sup>5</sup>Division of Endocrinology, Metabolism, Diabetes, and Nutrition, Department of Medicine, Mayo Clinic, Rochester, MN, USA. <sup>6</sup>These authors jointly supervised this work: Aleksey V. Matveyenko, Safia Costes. ✉email: [Matveyenko.Aleksey@mayo.edu](mailto:Matveyenko.Aleksey@mayo.edu); [safia.costes@igf.cnrs.fr](mailto:safia.costes@igf.cnrs.fr)

Received: 5 July 2021 Revised: 16 March 2022 Accepted: 25 March 2022

Published online: 15 April 2022



**Fig. 1** Pro-diabetogenic stressors augment REV-ERBa and p62 protein expression in  $\beta$ -cells. **A, B** REV-ERBa and p62 protein levels in INS-1E cells exposed to glucotoxicity for 48 h [30 mM glucose (G30) vs. 11 mM glucose as control (G11)], or pro-inflammatory cytokines [CK: 10 U/ml IL-1 $\beta$  (0.2 ng/ml), 500 U/ml TNF- $\alpha$  (50 ng/ml) and 100 U/ml IFN- $\gamma$  (33 ng/ml)] vs. control (C, 11 mM glucose) for 24 h ( $n = 5$  independent experiments). Graphs represent the quantification of the blots. **C** Temporal profile of REV-ERBa expression in INS-1E cells following 48 h exposure to G30 or G11 ( $n = 4$ –6 independent experiments). For all experiments, actin levels are used as loading control. Data are expressed as mean  $\pm$  SEM; \* $P < 0.05$ , \*\* $P < 0.01$ , \*\*\* $P < 0.001$ .

ERBa in the regulation of autophagy [17, 18]. Consistent with its role as a transcriptional repressor, REV-ERBa was recently shown to negatively regulate autophagy flux through transcriptional repression of key genes involved in vesicle nucleation, autophagosomal formation, lysosomal function, and mitophagy [18]. Correspondingly, pharmacological activation of REV-ERBa has been reported to inhibit autophagy and induce apoptosis in cancer cells [17], impair insulin secretion, and promote cell apoptosis in  $\beta$ -cell lines [19].

Whereas REV-ERBa expression was recently reported to be increased in  $\beta$ -cells in response to diabetogenic stressors (e.g., pro-inflammatory cytokines) [20], its role in autophagy regulation and potential contribution to  $\beta$ -cell dysfunction and apoptosis remains to be established. Therefore, in this study we set out to address whether REV-ERBa-mediated inhibition of autophagy caused by diabetogenic stressors contributes to the pathogenesis of  $\beta$ -cell failure. Our results demonstrate that glucotoxicity- and cytokine-induced  $\beta$ -cell deficit is attributed in part to REV-ERBa-mediated inhibition of autophagy. Importantly, negative modulation of REV-ERBa expression and activity provided protection from  $\beta$ -cell failure thus implicating REV-ERBa as a potential novel therapeutic target in T2DM.

## RESULTS

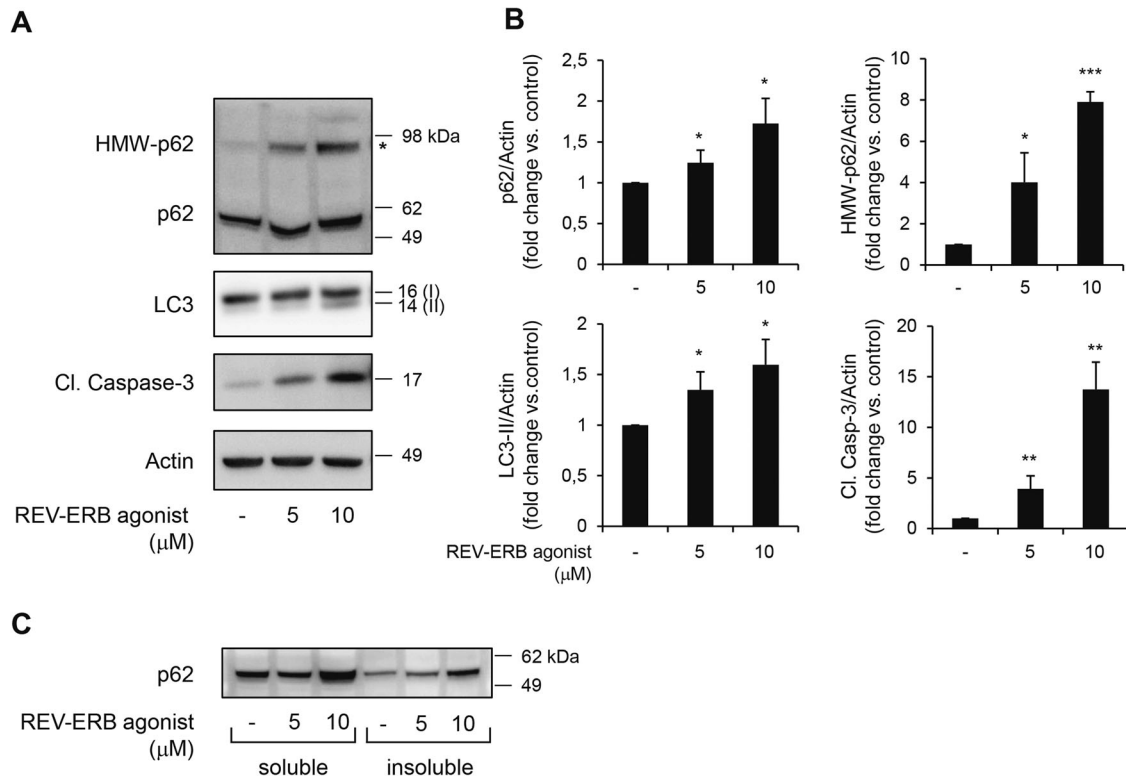
### Pro-diabetogenic stressors augment REV-ERBa and p62 protein expression in $\beta$ -cells

We first investigated whether conditions associated with T2DM lead to an increased expression of REV-ERBa and impaired autophagic flux. Exposure of INS-1E cells to high glucose concentration to mimic chronic hyperglycemia (30 mM glucose for 48 h) or pro-inflammatory conditions (cytokines: 10 U/ml IL-1 $\beta$ , 500 U/ml TNF- $\alpha$ , and 100 U/ml IFN- $\gamma$  for 24 h) led to a ~2–3 fold increase in REV-ERBa protein expression (Fig. 1A, B,  $P < 0.05$  and  $P < 0.001$ ). Importantly, augmentation of REV-ERBa expression was accompanied by increased protein levels of p62, a well-defined marker of impaired autophagic

flux previously shown to be increased in  $\beta$ -cells from T2DM patients [5, 10, 21]. To extend our findings, we next assessed the temporal profile of REV-ERBa expression in INS-1E cells following 48 h exposure to high glucose (Fig. 1C). Interestingly, whereas acute exposure to high glucose appeared to modestly attenuate REV-ERBa levels ( $P < 0.001$  at 8 h post glucose administration), chronic high glucose led to robust upregulation of REV-ERBa (Fig. 1C,  $P < 0.001$  and  $P < 0.05$  at 24–48 h). Notably, these results are consistent with purported pro-survival and autophagy-stimulating effects of acute hyperglycemia and pro-apoptotic and anti-autophagic effects of chronic hyperglycemia (i.e., glucotoxicity) [22].

### Pharmacological activation of REV-ERBa inhibits $\beta$ -cell autophagy and induces $\beta$ -cell apoptosis

To evaluate whether REV-ERBa is directly involved in the regulation of  $\beta$ -cell autophagy and survival, we first employed pharmacological activation of REV-ERBa by treating  $\beta$ -cells with a well-characterized synthetic ligand SR9009 [17, 18, 23–25]. SR9009 ligand has been shown to directly bind REV-ERBa and enhance its repressor activity by facilitating the binding of nuclear receptor corepressor-1 (NCoR) [17, 18, 23–26]. Our results demonstrate that exposure of INS-1E cells to SR9009 led to a robust dose-dependent increase in Cleaved Caspase-3 expression, a marker of apoptosis (Fig. 2A, B). In addition, exposure to SR9009 led to a dose-dependent increase in LC3-II levels (Fig. 2A, B), indicating an increased number of autophagosomes, which could be because of either induction of autophagy or decreased flux due to a blockade in fusion or degradation. To resolve this issue, levels of the autophagic substrate and adaptor p62 were examined: p62 protein levels were increased under SR9009 treatment (Fig. 2A, B) thus revealing that pharmacological activation of REV-ERBa decreases autophagy flux. Previous studies noted that p62 not only assists autophagic degradation of proteins but also, due to its polymeric nature, mediates its own aggregation when lysosomal degradation is limited [4, 27]. Interestingly, we noted the presence of a p62 high molecular weight band (98 kDa) in INS-1E cells exposed to SR9009



**Fig. 2** **REV-ERBa agonism inhibits β-cell autophagy and induces β-cell apoptosis.** **A** INS-1E cells were exposed to REV-ERBa agonist (SR9009, 5 or 10 μM, 24 h) or control (vehicle DMSO). Protein levels of p62, high molecular weight (HMW)-p62, LC3, Cleaved Caspase-3, and actin (loading control) were analyzed by western blot. **B** Graphs represent the quantification of the blots ( $n = 4-5$  independent experiments). Data are expressed as mean  $\pm$  SEM; \* $P < 0.05$ , \*\* $P < 0.01$ , \*\*\* $P < 0.001$  vs. control. **C** Soluble and insoluble fractions obtained from INS-1E cells exposed to REV-ERBa agonist (SR9009, 24 h) or control (DMSO). Protein levels of p62 were analyzed by western blot.

(Fig. 2A, B). This band reflects the presence of tightly aggregated forms of p62 [28] commonly detected in autophagy-deficient β-cells [10]. Since p62 aggregates are mostly insoluble, we next investigated whether p62 appears in the insoluble fraction of INS-1E cells exposed to SR9009. To proceed, we separated the detergent-soluble and -insoluble compartments by fractionation of cell lysates. We observed an increase in the levels of p62 in both the soluble and insoluble fractions following exposure to SR9009 (Fig. 2C), further supporting our observation of impaired lysosomal degradation following pharmacological activation of REV-ERBa.

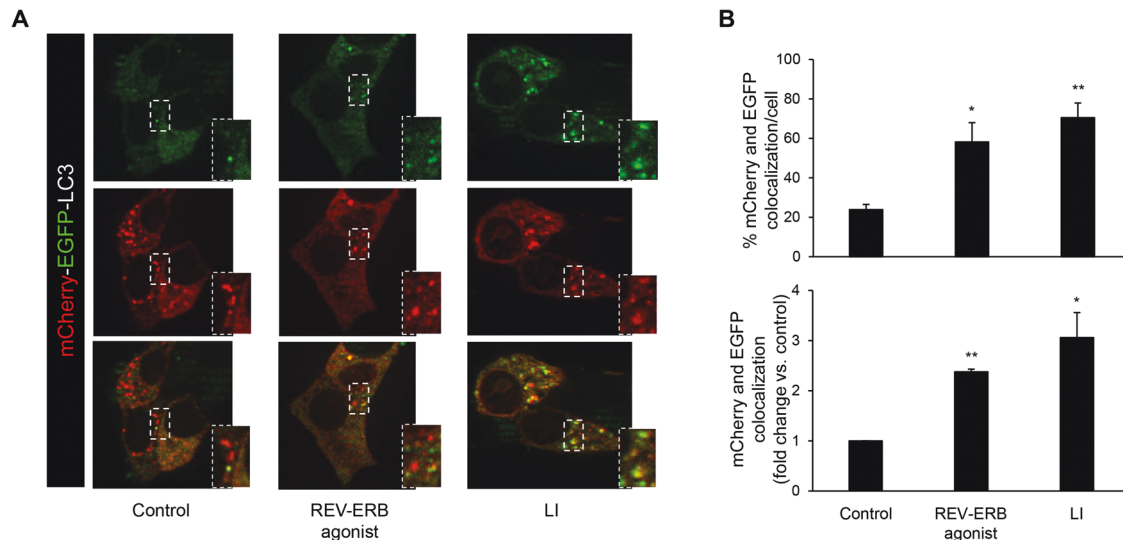
To further expand on our observations, we next used a sensitive method to assess autophagic flux based on the expression of tandem-labeled mCherry-EGFP-LC3B [29]. This assay relies on different pH sensitivity of EGFP and mCherry fluorescent proteins: when the autophagosome fuses with the acidic environment of the lysosome, EGFP fluorescence is lost whereas mCherry fluorescence remains intact in acidic stores. Validation of this system in INS-1E cells confirmed that blockage of the autophagic flux with common lysosomal inhibitors (E-64-d and pepstatin A) or chloroquine promoted increased colocalization of EGFP and mCherry puncta (Supplemental Fig. 1A, B), as already reported for chloroquine [5]. Importantly, exposure of INS-1E cells to SR9009 increased colocalization of EGFP and mCherry puncta by  $2.4 \pm 0.05$  fold (Fig. 3A, B, bottom graph,  $P < 0.01$ ), further supporting an impaired autophagic flux under pharmacological activation of REV-ERBa.

To establish whether pharmacological activation of REV-ERBa inhibits autophagy in primary human β-cells, we evaluated p62 expression in isolated human islets treated with SR9009. Consistent with our previous observations, p62 protein levels were markedly increased ( $3.7 \pm 0.9$  fold,  $P < 0.05$ ) in human islets treated with SR9009 and were associated with robust induction of

Cleaved Caspase-3 (Fig. 4A). Similar to INS-1E cells, a p62 high molecular weight band (98 kDa) was detected under SR9009 exposure (Fig. 4A, B,  $P < 0.05$ ). Furthermore, treatment of human islets with REV-ERBa agonist resulted in detection by immunofluorescence of p62-positive cytoplasmic inclusions in human islet sections and in dispersed human β-cells (arrows in Fig. 4C, D), providing an additional hallmark of defective lysosomal degradation in β-cells [10, 28].

#### Pharmacological activation of REV-ERBa attenuates β-cell secretory function

Having established a potential repressive role of REV-ERBa on β-cell autophagy and survival, we next assessed its role in the regulation of glucose-stimulated insulin secretion. A short exposure of 24 h to REV-ERBa synthetic ligand SR9009 was sufficient to attenuate β-cell secretory function in isolated human islets as shown by the prominent decrease in 16 mM glucose-stimulated insulin secretion (Fig. 5A, top panel,  $P < 0.001$  vs. vehicle in G16). This effect is unlikely to be caused by absolute insulin deficiency since SR9009 administration failed to alter overall insulin content (Fig. 5A, bottom panel). In contrast, prolonged exposure to SR9009 (72 h) resulted in the overall decline in islet insulin content, the elevation of basal insulin release, and a decrease in glucose-stimulated insulin secretion (Fig. 5A,  $P < 0.05$  vs. vehicle in G16). Similarly, a 24-h exposure of INS-1E cells to SR9009 (10 μM) resulted in a reduced insulin secretory function (Fig. 5B,  $P < 0.001$  vs. vehicle in G16.7). As shown by corresponding gene expression analysis in INS-1E cells, the SR9009-mediated decrease in β-cell function was not associated with attenuated expression of genes regulating glucose sensing and exocytosis (e.g., *GLUT2*, *SNAP25*, *GCK*), but rather appeared to alter the expression of β-cell identity genes



**Fig. 3** REV-ERBa agonism impairs autophagic flux in  $\beta$ -cells. **A** INS-1E cells expressing mCherry-EGFP-LC3B plasmid were either cultured in the absence or presence of lysosomal inhibitors (LI: E-64-d, 10  $\mu$ g/ml and pepstatin A, 10  $\mu$ g/ml, 24 h), or exposed to REV-ERBa agonist (SR9009, 10  $\mu$ M, 24 h) or control (DMSO). **B** Autophagic flux was assessed by quantification of mCherry and EGFP puncta colocalization using the Image J software. Results are expressed as the percentage of mCherry and EGFP colocalization per cell (top graph), and as fold change vs. control (bottom graph). Data are expressed as mean  $\pm$  SEM of three to four independent experiments; \* $P$  < 0.05, \*\* $P$  < 0.01 vs. control.

(e.g., *INS2* and *MAFA*) (Fig. 5C). Overall, these results indicate that pharmacological activation of REV-ERBa also compromises  $\beta$ -cell function, an observation consistent with the previously proposed role of autophagy in the regulation of  $\beta$ -cell survival, insulin biosynthesis, and  $\beta$ -cell homeostasis [30, 31].

#### Negative modulation of REV-ERBa protects $\beta$ -cells and human islets from inflammation and glucotoxicity-induced apoptosis

Given the purported involvement of REV-ERBa in the regulation of  $\beta$ -cell dysfunction and apoptosis, we next evaluated whether the negative modulation of REV-ERBa could protect  $\beta$ -cells from pro-diabetogenic stressors. We first explored whether inhibition of REV-ERBa activity using the chemical antagonist SR8278 [32] attenuates cytokine-mediated  $\beta$ -cell apoptosis (Fig. 6). Our experiments revealed a ~30% decrease in cytokines-induced INS-1E cell apoptosis (Fig. 6A,  $P$  < 0.05) and a ~60% decrease in cytokine-induced human islet cell apoptosis in the presence of REV-ERBa antagonist (Fig. 6B,  $P$  < 0.05). To further confirm these findings, we next used a siRNA approach to specifically target *Rev-erba* expression. We validate our approach by demonstrating that transfection of INS-1E cells with 10 nM of siRNA for 48 h resulted in a ~75% knockdown of REV-ERBa protein expression under both control and cytokine-stimulated conditions (Fig. 6C). Importantly, siRNA-mediated decrease in REV-ERBa resulted in significant protection of INS-1E cells from cytokines-induced apoptosis (25% decrease, Fig. 6C,  $P$  < 0.05). Under glucotoxicity, pharmacological inhibition of REV-ERBa decreased apoptosis by 23% in INS-1E cells (Fig. 7A,  $P$  < 0.01) and by 50% in human EndoC- $\beta$ H1 cells (Fig. 7B,  $P$  < 0.01). Consistently, specific knockdown of *Rev-erba* by siRNA (10 nM) resulted in a 37% decrease in glucotoxicity-induced apoptosis (Fig. 7C,  $P$  < 0.05).

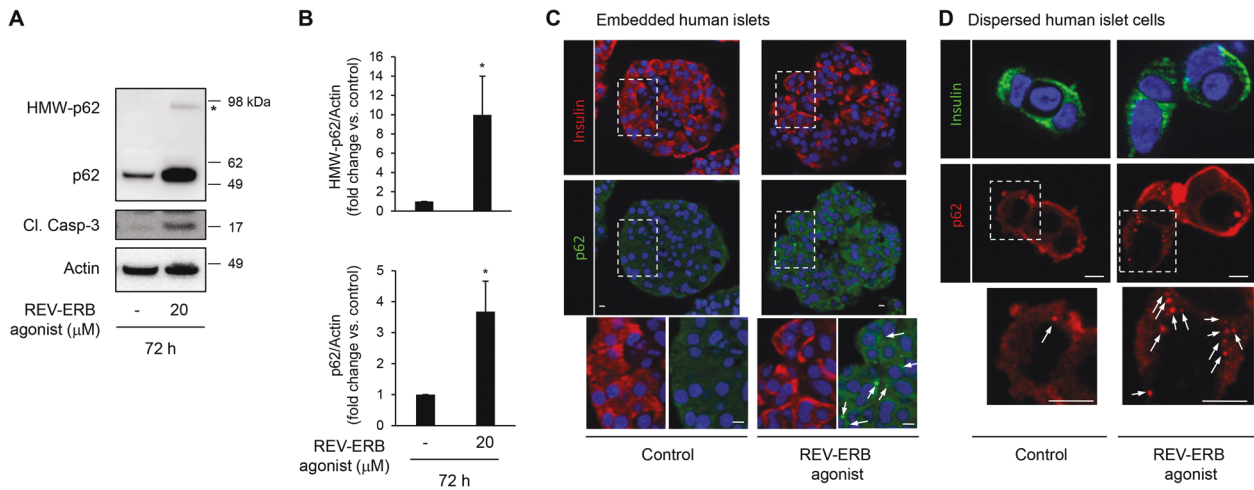
In addition, impaired glucose-stimulated insulin secretion under glucotoxicity had the tendency to be improved by pharmacological inhibition (Fig. 8A, bottom panel,  $P$  = 0.06 vs. vehicle in G30) and was significantly ameliorated by specific knockdown of *Rev-erba* (Fig. 8B, bottom panel,  $P$  < 0.05 vs. Scr in G30) in INS-1E cells. This partial improvement of  $\beta$ -cell function under negative modulation of REV-ERBa was unlikely to be caused by changes in  $\beta$ -cell function/identity gene expression (Supplemental Fig. 2A, B). Notably, the antagonist SR8279 decreased glucotoxicity-induced p62 accumulation (Fig. 7A,  $P$  < 0.05), thus suggesting

that inhibition of REV-ERBa attenuated  $\beta$ -cell apoptosis and dysfunction by restoring impaired autophagic flux.

#### Digital genomic footprinting reveals that REV-ERBa preferentially binds to genomic loci regulating protein degradation and autophagy in T2DM human islets

Computational approaches have been recently developed to analyze transcription factor binding and activity at a genome-wide level taking advantage of the fact that bound transcription factors impede DNA cleavage thus creating areas of lower Tn5 transposase insertion in larger accessible chromatin regions (e.g., “footprints”) (Fig. 9A) [33, 34]. Thus, to extend our findings to T2DM conditions, we assessed publicly available assay for transposase-accessible chromatin using sequencing (ATAC-seq) libraries and corresponding peak sets from 5 non-diabetic (ND) and 5 T2DM pancreatic islet donors (SRP117935) [35]. In order to define genome-wide REV-ERBa binding to *cis*-regulatory elements in ND and T2DM islets, we utilized Hmm-based Identification of Transcription factor footprints (HINT) [36]. Using this method, we observed robust differences in REV-ERBa activity between non-diabetic vs T2DM islets (Fig. 9B). Most notably, REV-ERBa footprints unique for T2DM islets were annotated to promoter regions representing genomic loci associated with protein degradation and autophagy pathways such as GO: ~protein catabolic process, ~protein ubiquitination, and ~autophagy (Fig. 9C). Interestingly, non-diabetic conditions were associated with unique REV-ERBa footprints in genomic regions associated with GO: ~endosomal transport, ~mitochondrial transport, and ~mitotic cycle (Fig. 9D), whereas REV-ERBa footprints common to non-diabetic and T2DM conditions annotated to genomic loci associated with GO: ~methylation, ~cytoskeleton organization and covalent chromatin organization (Fig. 9E). Finally, a meta-analysis of publicly available 5 human islet microarray datasets (GSE25724, 76894, 38642, 76895, and 20966) comparing the transcriptome of ND and T2DM islets revealed significant downregulation of genes annotated as REV-ERBa footprints (unique to T2DM conditions) in human T2DM islets (Fig. 9F,  $P$  = 0.01). As annotated in Fig. 9F, this analysis notably reveals the downregulation of genes involved in autophagy induction (*CALCO2*), lysosomal acidification (*TMEM199*, *TMEM98*), mitophagy (*USP30*), and microtubule dynamics (*APPBP2*) required for autophagosome formation and motility [37].





**Fig. 4** REV-ERBa agonism impairs autophagic flux in human islets. **A** Human islets were exposed to REV-ERB agonist (SR9009, 20 μM, 72 h) or control (DMSO). Protein levels of p62, high molecular weight (HMW)-p62, Cleaved Caspase-3, and actin (loading control) were analyzed by western blot. **B** Graphs represent the quantification of the blots ( $n = 4$  independent experiments). Data are expressed as mean  $\pm$  SEM;  $*P < 0.05$  vs. control. **C** p62 staining was assessed by immunofluorescence (p62, green; insulin, red; nuclei, blue) in paraffin-embedded human islets exposed to REV-ERB agonist (SR9009, 20 μM, 72 h) or control (DMSO). **D** Dispersed human islets cells were exposed to REV-ERB agonist (SR9009, 20 μM, 24 h) or control (DMSO), and then fixed for immunofluorescence detection of p62 (red), insulin (green) and nuclei (blue). p62-positive cytoplasmic inclusions in  $\beta$ -cells are indicated with arrowheads. Scale bar: 5 μm.

## DISCUSSION

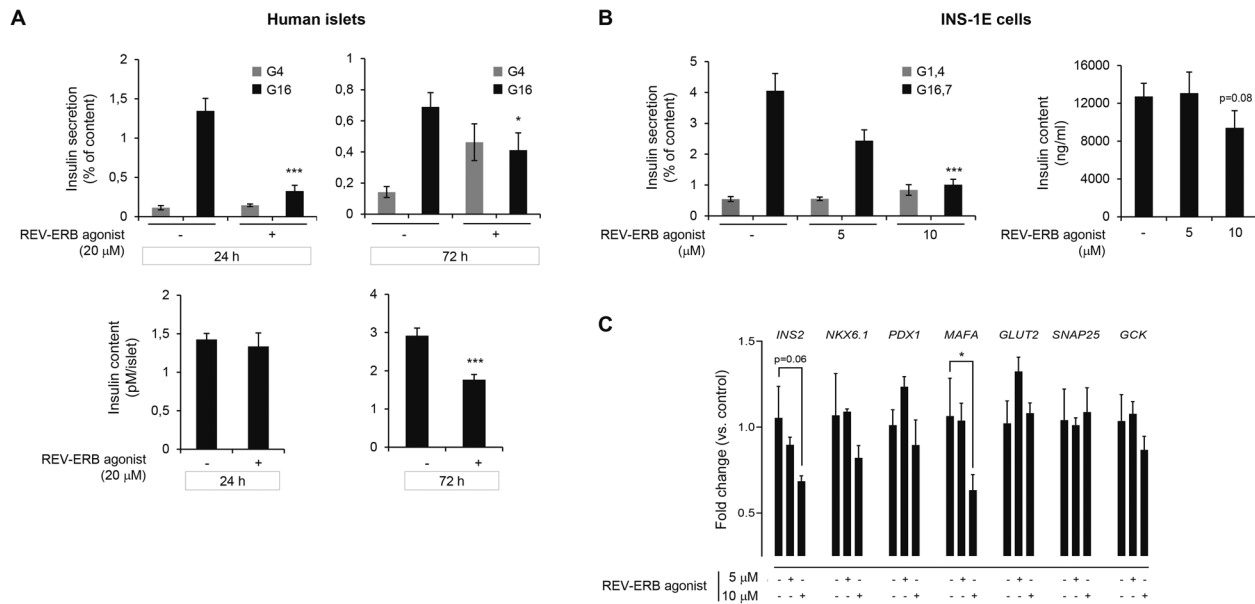
The etiology of  $\beta$ -cell failure in T2DM is driven by a complex interaction between genetic susceptibilities and exposure to pro-diabetogenic stressors typically attributed to the induction of obesity and insulin resistance [38]. Most prominent diabetogenic stressors include chronic exposure to elevated glucose concentrations and pro-inflammatory cytokines which converge to promote induction of oxidative/endoplasmic reticulum (ER) stress and significantly compromise  $\beta$ -cell secretory function and survival [39, 40]. At the molecular level,  $\beta$ -cells in T2DM are characterized by disrupted regulation of autophagy, which is particularly damaging to  $\beta$ -cells given the characteristic high burden of protein synthesis and folding in obesity and T2DM. Subsequently, our study provides the first evidence that glucotoxicity and inflammation-mediated disruption of autophagy and consequent induction of  $\beta$ -cell apoptosis is driven in part by augmented expression and activity of REV-ERBa. Importantly, our study also found that negative modulation of REV-ERBa expression provides protection from glucotoxicity and inflammation-mediated  $\beta$ -cell failure. Finally, utilizing novel bioinformatics approaches we also provide evidence that augmented REV-ERBa activity in T2DM human islets is associated with impaired transcriptional regulation of autophagy, protein degradation, and ubiquitination pathways. Given the key role of the ubiquitination process in autophagy [27] and the existence of interplay between autophagy and the ubiquitin-proteasome system in  $\beta$ -cells [41], it is not surprising that these data further reveal a wider role of REV-ERBa in the modulation of protein degradation in T2DM islets.

Our results obtained in both clonal and human  $\beta$ -cells demonstrate that pharmacological activation of REV-ERBa with the synthetic ligand SR9009 disrupts autophagy; however, the mechanisms underlying this observation are not fully understood. By the demonstration of p62 accumulation (cytosolic inclusions and protein levels) and the use of the tandem mCherry-EGFP-LC3 reporter system, our data revealed a REV-ERBa-mediated blockade in lysosomal degradation, therefore, impacting the autophagic flux. Since autophagosome number was rather increased in  $\beta$ -cells exposed to REV-ERBa agonist, lysosomal clearance seems most likely affected but we cannot exclude a simultaneous role of REV-ERBa on autophagic vacuole formation and lysosomal degradation in  $\beta$ -cells. Indeed, recent studies in skeletal muscle and cancer

cells reported that pharmacological activation of REV-ERBa inhibits autophagosome formation via negative modulation of core autophagy genes such as *Ulk3*, *Ulk1*, *Bec1*, *Atg7*, and *Atg5* [17, 18]. Similarly, REV-ERBa-mediated repression of autophagy was recently shown in zebrafish where investigators utilized ChIP assays to demonstrate the direct binding of REV-ERBa to promoter regions of key autophagy genes (e.g., *ulk1a* and *atp1d1*). Consistently, REV-ERBa deficient zebrafish were characterized by significant augmentation in the number of autophagosomes/autolysosomes and the expression of autophagy-related genes [42].

It is becoming increasingly evident that autophagy is a critical component of  $\beta$ -cell homeostasis in health and under conditions associated with diabetogenic stress [43]. Specifically, autophagy is required for proper control of  $\beta$ -cell development and maturation and plays an important role in the regulation of insulin biosynthesis and secretion [30, 44]. Importantly, autophagy is also essential for  $\beta$ -cell survival in response to conditions associated with ER stress and oxidative stress as commonly occurs in  $\beta$ -cells exposed to glucotoxicity and inflammation in T2DM [31, 45]. Indeed, inhibition of autophagy compromises  $\beta$ -cell survival and leads to dysregulation of glucose homeostasis in response to diet-induced obesity and/or increased expression of human islet amyloid polypeptide (hIAPP) [9, 46]. In contrast, stimulation of autophagy via pharmacological strategy (e.g., rapamycin) has been shown to preserve  $\beta$ -cell integrity under diabetogenic conditions [31, 45, 47]. Our data is consistent with these observations and demonstrates for the first time that REV-ERBa antagonist or knock-down provides protection from glucotoxicity and cytokine-mediated  $\beta$ -cell apoptosis through stimulation of autophagy. In addition, given the closely linked relationship between  $\beta$ -cell secretory function and mass [48], negative modulation of REV-ERBa may also improve  $\beta$ -cell function under glucotoxicity through stimulation of autophagy and decreased apoptosis. However, future studies will be required to assess the potency of REV-ERBa inhibition as a strategy to promote  $\beta$ -cell survival and function in diabetes.

Consistent with recent observations [19, 20], our data reveal an upregulation of REV-ERBa in  $\beta$ -cells exposed to diabetes-related conditions. REV-ERBa is a transcriptional repressor that has been shown to negatively regulate the expression of genes involved in

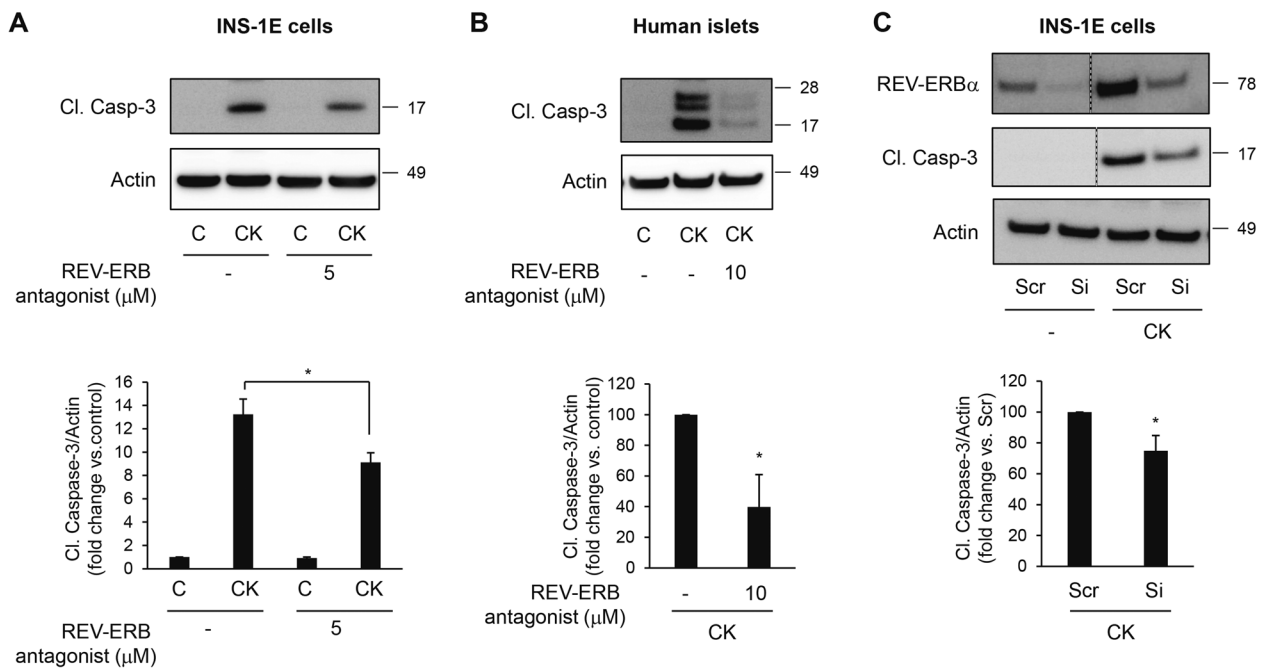


**Fig. 5 Pharmacological activation of REV-ERBa attenuates  $\beta$ -cell secretory function.** **A** Isolated human islets were exposed to REV-ERB agonist (SR9009, 20  $\mu$ M, for either 24 h or 72 h) or control (DMSO). Following a 30 min quiescent period in Krebs 4 mM glucose (G4), islets were stimulated with 16 mM glucose (G16) for 30 min at 37  $^{\circ}$ C. The graph represents insulin secretion normalized to insulin content ( $n = 7$ –8 independent experiments). The bottom panel represents insulin content in human islets. Data are expressed as mean  $\pm$  SEM; \* $P < 0.05$ , \*\*\* $P < 0.001$  vs. control. **B** INS-1E cells were exposed to REV-ERB agonist (SR9009, 5 or 10  $\mu$ M, 24 h) or control (DMSO). Following a 2 h quiescent period in Krebs 1.4 mM glucose (G1.4), cells were stimulated with 16.7 mM glucose (G16.7) for 1 h at 37  $^{\circ}$ C; (G1.4 refers to non-stimulated cells). The graph represents insulin secretion normalized to insulin content ( $n = 4$  independent experiments). The bottom panel represents insulin content in INS-1E cells. **C** INS-1E cells were exposed to REV-ERB agonist (SR9009, 5 or 10  $\mu$ M, 24 h) or control (DMSO). mRNA expression of key  $\beta$ -cell identity and functional genes expressed as fold change relative to control expression ( $n = 4$  independent experiments per condition). Data are expressed as mean  $\pm$  SEM; \*\*\* $P < 0.001$ , \* $P < 0.05$  vs. control.

many important cellular processes such as metabolism, inflammation, and notably, plays an important role in the stabilization of the core circadian clock transcriptional-translational feedback loop. Indeed, both *BMAL1* and *CLOCK* are direct target genes of REV-ERBa, thus chronic pharmacological activation of REV-ERBa (e.g., with synthetic agonist SR9009) suppresses *BMAL1* expression and imparts disruptive effects on the circadian clock [26]. This suggests that glucotoxicity and inflammation-mediated increase in  $\beta$ -cell REV-ERBa expression may also promote  $\beta$ -cell failure indirectly through suppressive effects of REV-ERBa on the core circadian clock. Conversely, negative modulation of REV-ERBa may also improve  $\beta$ -cell function under glucotoxicity via upregulation of *BMAL1*. This is in line with a recent observation that clock amplitude-enhancing compound Nobiletin (as opposed to SR9009) enhances in vitro glucose-stimulated insulin secretion in T2DM human islets, whereas enhancement of  $\beta$ -cell circadian clock in vivo via conditional overexpression of *Bmal1* improves insulin secretion and glucose tolerance in mice exposed to diet-induced obesity [49, 50]. Whereas these effects are likely mediated through modulation of circadian amplitude in islets, as shown for Nobiletin and *Bmal1*  $\beta$ -cell overexpression [49, 50], we speculate that deleterious effects of REV-ERBa activation on  $\beta$ -cell autophagy and survival are likely attributed to mechanisms independent of core circadian clock transcription factors (e.g., *BMAL1* and *CLOCK*). Indeed, although *BMAL1* and *CLOCK* target genes are enriched for regulators of glucose-stimulated insulin secretion and insulin exocytosis, these transcription factors do not appear to be involved in the transcriptional control of autophagy and cell survival [51]. In addition, whereas REV-ERBa agonism did not repress the expression of genes regulating  $\beta$ -cell insulin secretory mechanism, our studies cannot rule out the possibility that REV-ERBa activation may also alter  $\beta$ -cell secretory function and survival through a transcriptional repressor activity (independently of autophagy).

Using the rat pancreatic  $\beta$ -cell line INS-1E and human  $\beta$ -cell line/islets, we reported that activation of REV-ERBa impaired insulin secretion and inhibition protected  $\beta$ -cells from diabetogenic conditions. These data are in contradiction with the study from Vieira et al. [52] reporting that REV-ERBa silencing impaired glucose-stimulated insulin secretion in the mouse pancreatic  $\beta$ -cell line (MIN6) and in mouse islets. The contradiction of these results can rely on two main points: 1/ the differences between the  $\beta$ -cell lines that were used: MIN6 vs INS-1E cells. Supporting this assumption, opposite results between MIN6 and INS-1 cells have already raised a concern regarding the role of REV-ERBa in the regulation of lipogenic genes expression [52, 53]. These discrepancies underlie the importance to validate key results in human pancreatic  $\beta$ -cells to avoid species-specific effects. The data we obtained in INS-1E cells are reproducible in human islets and human  $\beta$ -cells, reinforcing our confidence in the proposed conclusions; 2/ the context of negative modulation of REV-ERBa: in contrast to Vieira et al. [52] who investigated the consequences of REV-ERBa invalidation in healthy  $\beta$ -cells, we knocked down REV-ERBa in the context of severe  $\beta$ -cell failure (glucotoxic conditions) in order to evaluate any beneficial effects on  $\beta$ -cell function.

To examine the pathological role of REV-ERBa activation in  $\beta$ -cells, we investigated the effects of synthetic ligand SR9009 which has been shown to directly bind REV-ERBa and enhance its repressor activity [26]. Indeed, our study established that SR9009-mediated activation of REV-ERBa disrupts  $\beta$ -cell autophagy, insulin secretory function, and survival, reproducing many aspects of the pathophysiology of human islets in T2DM. However, it is important to note that potential off-target effects of SR9009 were recently described in hepatocytes thus raising concerns regarding REV-ERBa-specific actions of SR9009 [54]. Although the specificity of this compound for REV-ERBa activation is supported by loss-of-function studies in REV-ERBa-deficient mice [23, 25], future work



**Fig. 6 Negative modulation of REV-ERBa protects  $\beta$ -cells and human islets from cytokines-induced apoptosis.** INS-1E cells (**A**) or human islets (**B**) were exposed or not to pro-inflammatory cytokine mix (CK) in the presence or absence of REV-ERB antagonist (SR8279, 5 or 10  $\mu$ M for 24 h). Cleaved Caspase-3 and actin (loading control) levels were analyzed by western blot ( $n = 3$ –4 independent experiments). **C** REV-ERBa was silenced in INS-1E cells by siRNA. Scramble RNA (Scr) was used as a control. Cells were then exposed to pro-inflammatory cytokine mix (CK). Levels of REV-ERBa, Cl. Caspase-3, and actin were analyzed by western blot ( $n = 3$  independent experiments). For REV-ERBa and Cl. Caspase-3 images, lanes were run on the same gel but were non-continuous (as indicated). Data are expressed as mean  $\pm$  SEM; \* $P < 0.05$  vs. control.

will be important in confirming the specificity of REV-ERBa activation in the modulation of  $\beta$ -cell failure in T2DM.

In conclusion, our study demonstrates a previously unexplored link between the core circadian clock nuclear receptor REV-ERBa, autophagy, and  $\beta$ -cell failure in response to diabetogenic conditions. Our observation that the negative modulation of REV-ERBa (either by pharmacological or specific genetic inhibition) provides partial protection for glucotoxicity- and cytokines-induced  $\beta$ -cell apoptosis point to REV-ERBa as a potential new therapeutic target to modulate autophagy, protein degradation and  $\beta$ -cell survival in diabetes. These observations are in line with recent studies demonstrating an important role of REV-ERBa in the regulation of inflammation and amyloid clearance in Alzheimer's disease [55, 56]. Future studies are warranted to explore mechanisms underlying increased REV-ERBa expression and transcriptional activity in human T2DM  $\beta$ -cell and the corresponding potential of REV-ERBa-based strategies to preserve a functional  $\beta$ -cell mass in T2DM.

## MATERIALS AND METHODS

### Human islets/dispersed human islet cells

Experiments involving human islets were performed in agreement with the local ethic committee (Biological Resources Center, Collection IRB 5 "Human Islets of Langerhans", identifiant Biobanque no. BB-0033-00031, CHU, Montpellier), the institutional ethical committee of the French Agence de la Biomédecine (ABM no. PFS 13-008) and the French Ministry of Research (DC-2011-1401 and AC-2017-3039). Informed consent was obtained for all pancreases. Pancreases were harvested from five brain-dead non-diabetic donors. Isolated islets were prepared by collagenase digestion followed by density gradient purification at the Laboratory of Cell Therapy for Diabetes (Institute for Regenerative Medicine and Biotherapy, Montpellier, France), according to a slightly modified version of the automated method [57]. Following isolation, human islets were cultured for recovery for 3 days at 37 °C, in a 5% CO<sub>2</sub> atmosphere, in CMRL 1066 medium (Life Technologies) containing 5.6 mM glucose supplemented with 10% FBS, 2 mM glutamine, 25 mM HEPES, 100 IU/ml penicillin, and

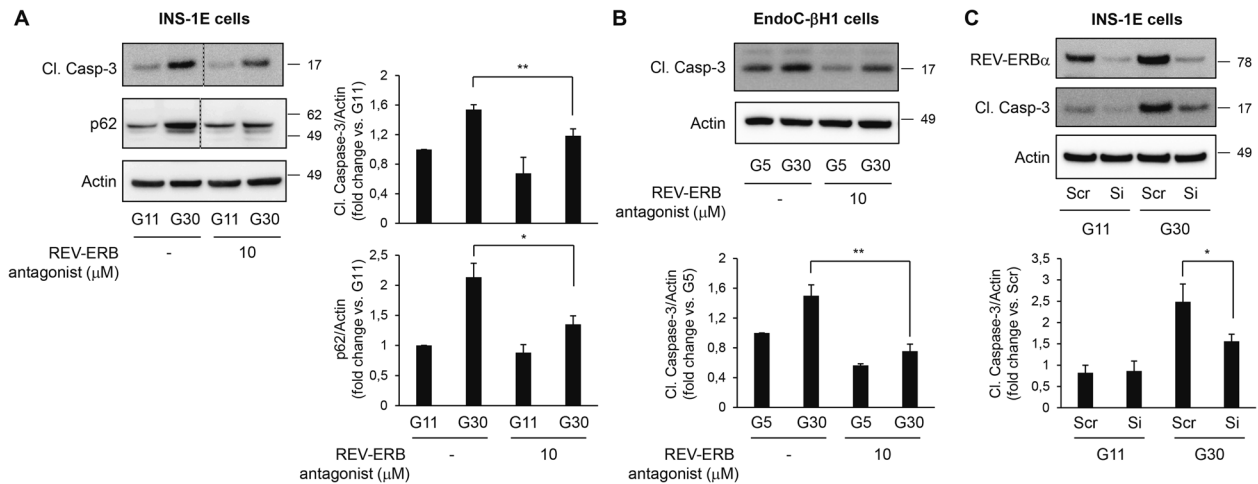
100  $\mu$ g/ml streptomycin. Islets were then incubated in CMRL 1066 medium containing 5.6 mM glucose. The islet purity was 90%, as re-assessed by dithizone staining in the host laboratory. REV-ERB agonist (SR9009, resuspended in DMSO; Millipore) was added at 20  $\mu$ M for 72 h in CMRL 1066 medium. For pro-inflammatory cytokine exposure, human islets were incubated in a cytokine mix [100 U/ml IL-1 $\beta$  (2 ng/ml), 500 U/ml TNF- $\alpha$  (50 ng/ml) and 100 U/ml IFN- $\gamma$  (33 ng/ml)] for 24 h. Murine recombinant IFN- $\gamma$  was from Life Technologies; murine IL-1 $\beta$  and TNF- $\alpha$  from PeproTech. REV-ERB antagonist (SR8278, resuspended in DMSO; Millipore) was added at 10  $\mu$ M for 24 h. At the end of the experiment, islets were washed with cold PBS and lysed for 10 min at 4 °C in NP40 lysis buffer [58], sonicated for 10 s, and centrifuged at 10,000 r.p.m. for 10 min. Clusters of cells were prepared by dispersion of isolated islets with trypsin and plated on glass coverslips in CMRL 1066 medium. REV-ERB agonist (SR9009) was added at 20  $\mu$ M for 24 h.

### Cell culture

**INS-1E cells.** The rat  $\beta$ -cell line INS-1E was provided by Dr. P. Maechler (Department of Cell Physiology and Metabolism, University of Geneva, Geneva, Switzerland) [59]. INS-1E cells were grown in RPMI-1640 medium with 11 mM glucose supplemented with 7.5% heat-inactivated FBS, 1 mM sodium pyruvate, 50  $\mu$ M  $\beta$ -mercaptoethanol, 2 mM glutamine, 10 mM HEPES, and 100 IU/ml penicillin and 100  $\mu$ g/ml streptomycin (Life Technologies) at 37 °C in a humidified 5% CO<sub>2</sub> atmosphere. No mycoplasma contamination was detected. Soluble and insoluble fractions were prepared using the ReadyPrep Protein Extraction Kit (Soluble/Insoluble) (Bio-Rad, 163-2085) according to the manufacturer's instructions. For glucotoxicity experiments, INS-1E cells were cultured in a complete RPMI 1640 medium (Life Technologies) containing 11- or 30-mM glucose for 48 h. For pro-inflammatory cytokine exposure, INS-1E cells were incubated in a cytokine mix [10 U/ml IL-1 $\beta$  (0.2 ng/ml), 500 U/ml TNF- $\alpha$  (50 ng/ml) and 100 U/ml IFN- $\gamma$  (33 ng/ml)] for 24 h. REV-ERB agonist (SR9009, resuspended in DMSO; Millipore) was added at 5 or 10  $\mu$ M for 24 h. REV-ERB antagonist (SR8278, resuspended in DMSO; Millipore) was added at 5 or 10  $\mu$ M during the last 24 h of treatment.

**EndoC- $\beta$ H1 cells.** The human  $\beta$ -cell line EndoC- $\beta$ H1 was provided by Univercell-Biosolutions (Toulouse, France) and cultured as previously described [60]. Briefly, cells were seeded at a density of approximately





**Fig. 7 Negative modulation of REV-ERBa protects β-cells from glucotoxicity-induced apoptosis.** INS-1E (A) or EndoC-βH1 cells (B) were exposed to glucotoxicity [30 mM glucose (G30) vs. control 11 mM glucose (G11)] for 48 h in the presence or absence of REV-ERB antagonist (SR8279, 10 μM). Cleaved Caspase-3, p62, and actin levels (loading control) were analyzed by western blot ( $n = 5$  independent experiments for INS-1E;  $n = 3$  independent experiments for EndoC-βH1). C REV-ERBa was silenced in INS-1E cells by siRNA. Scramble RNA (Scr) was used as a control. Cells were then exposed to glucotoxicity for 48 h (G30 vs. G11). Levels of REV-ERBa, Cl. Caspase-3, and actin were analyzed by western blot ( $n = 4$  independent experiments). For p62 and Cl. Caspase-3 images, lanes were run on the same gel but were non-continuous (as indicated). Data are expressed as mean  $\pm$  SEM; \* $P < 0.05$ , \*\* $P < 0.01$  vs. control.

600,000 cells/cm<sup>2</sup> on tissue culture-treated plates pre-coated overnight with coating matrix in EndoC-βH1 complete medium (Univercell-Biosolutions). Cells were passaged approximately every 7 days. All experiments on EndoC-βH1 were performed from passage 10 to 45 after thawing. For glucotoxicity experiments, EndoC-βH1 cells were cultured in a complete medium containing 5.6- or 30-mM glucose for 72 h. REV-ERB antagonist (SR8279, resuspended in DMSO; Millipore) was added at 10 μM during the last 24 h of treatment. At the end of the experiment, cells were washed with cold PBS and lysed for 10 min at 4°C in NP40 lysis buffer and centrifuged at 10,000 r.p.m. for 10 min.

#### REV-ERBa siRNA experiments

REV-ERBa expression was silenced in INS-1E cells using Silencer Select siRNA duplexes designed for rat *Nr1d1* (s141182, Life Technologies). Cells were seeded in 6-well plates at 800,000 cells/well and grown overnight to reach 40–50% confluency. The next day, lipofectAMINE3000-siRNA complexes were prepared according to the manufacturer's instructions. REV-ERBa siRNA duplexes were tested at final concentrations of 10, 25 or 50 nM. Cells were transfected with REV-ERBa siRNA or control siRNA (scramble) (10 nM final concentration) in Opti-MEM (Life Technologies) for 24 h before switching to the fresh culture medium, glucotoxicity condition (48 h) or cytokine mix (24 h).

#### Western blotting

Proteins (25–50 μg/lane) were separated on a 4–12% Bis-Tris NuPAGE gel and blotted onto a PVDF membrane (FluoroTrans; VWR). Membranes were probed overnight at 4°C with primary antibodies against REV-ERBa (13418, Cell signaling), LC3B (2775, Cell signaling), cleaved caspase-3 (9661, Cell signaling), p62 (GP62-C, Progen, Heidelberg, Germany), Actin (A5441, Sigma). Horseradish peroxidase-conjugated secondary antibodies were from Cell Signaling. Proteins were visualized by enhanced chemiluminescence (Millipore) on ChemiDoc camera (Bio-Rad) and protein expression levels were quantified using the ImageJ software (National Institutes of Health, Bethesda, MD). Full and uncropped western blots are presented in Supplemental File.

#### RNA isolation and quantitative, real-time PCR analysis (qRT-PCR)

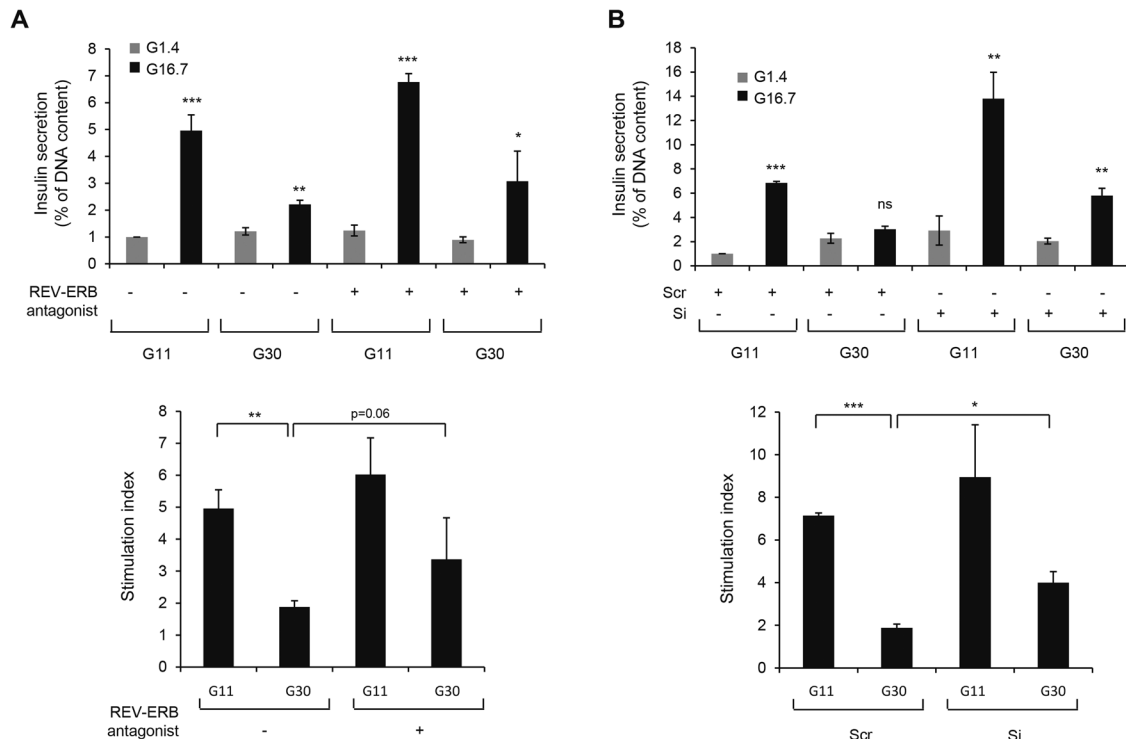
Total RNA was extracted using the RNeasy Mini Kit (Qiagen, Courtaboeuf, France) according to the manufacturer's instructions. In all, 300 ng of total RNA was subsequently transcribed into cDNA using the iScript cDNA Synthesis Kit (Bio-Rad, 1708891). Gene-specific primers (Supplemental Table 1) were mixed with the cDNA and SYBR Green Master Mix (Applied Biosystems, Waltham, MA), and analysis was performed by the Applied Biosystems StepOnePlus Real-Time PCR System. β-actin expression was used for normalization of results.

#### Immunostaining and imaging

Isolated human islets were treated with REV-ERB agonist (SR9009, 20 μM, 72 h) or DMSO as the vehicle (130 islets per condition). Islets were then washed twice in PBS and transferred into 3.7% paraformaldehyde (Sigma-Aldrich) in PBS for fixation for 4 h. After 2 washes in PBS, islets were colored in 0.1% neutral red, washed twice in PBS, and embedded in 24% agar. Cubes of agar containing batches of islets were fixed overnight into 3.7% paraformaldehyde, washed with PBS before being transferred into 70% ethanol, and then processed for paraffin embedding. Sections were then incubated overnight at 4°C with primary antibodies (anti-p62: GP62-C, 1/100, Progen; anti-insulin, 1/100, Cell Signaling), followed by 1 h at room temperature with secondary antibodies and DAPI. Sections were mounted in Mowiol (Sigma-Aldrich). Fixed dispersed human islet cells were incubated overnight at 4°C with primary antibodies (anti-p62: GP62-C, 1/400, Progen; anti-insulin, 1/200, Cell Signaling), followed by 1 h at room temperature with secondary antibodies and DAPI. For mCherry-EGFP-LC3B plasmid transfection experiments (pBABE-puro mCherry-EGFP-LC3B was a gift from Jayanta Debnath, Addgene #22418, Teddington, UK [61]), INS-1E cells were plated on 6-well plates at a density of 1 million cells/well. The next day, lipofectAMINE2000-mCherry-EGFP-LC3B plasmid complexes were prepared according to the manufacturer's instructions. Cells were transfected in Opti-MEM (Invitrogen) for 4 h and then cultured in a complete medium for the indicated time. Images were acquired with an AxioImager Apotome microscope (Zeiss) using either a 40X (islets) or 100X (clusters of human cells and INS-1E cells) immersion oil objective and the Zen Blue software. For mCherry-EGFP-LC3B plasmid quantification, cells expressing mCherry were selected randomly and acquired to be blinded for EGFP expression. Ten fields per coverslip were imaged (as  $n = 1$ ) and saved in "czi" (rather than "tiff") format allowing to save the entire image parameters; they were reopened and quantified using ImageJ. Dots were counted manually offline on images whose identification was blinded to the experimenter.

#### Measurements of insulin secretion

INS-1E cells were pre-incubated for 2 h in Krebs Ringer buffer (KRB) [62] containing 1.4 mM glucose, followed by a 1 h incubation at 1.4 or 16.7 mM glucose. Supernatant from the incubation buffers was collected and cleared by centrifugation. Insulin content extraction was performed using acid ethanol. Insulin release and contents were measured by homogenous time-resolved fluorescence (HTRF) (Cisbio bioassays, Codolet, France) according to the manufacturer's instructions. HTRF signals were measured using Pherastar FS (BMG Labtech, Ortenberg, Germany) microplate reader. Insulin release was normalized to insulin or DNA content (as indicated). To measure static glucose-stimulated insulin secretion, human islets were incubated first in KRB buffer supplemented with 4 mM glucose for 30 min followed by exposure to KRB buffer containing 16 mM glucose for 30 min.



**Fig. 8 Negative modulation of REV-ERBa partially protects from glucotoxicity-induced  $\beta$ -cell dysfunction.** **A** INS-1E cells were exposed to glucotoxicity [30 mM glucose (G30) vs. control 11 mM glucose (G11)] for 48 h in the presence or absence of REV-ERB antagonist (SR8279, 10  $\mu$ M). Following a 2 h quiescent period in Krebs 1.4 mM glucose (G1.4), cells were stimulated with 16.7 mM glucose (G16.7) for 1 h at 37  $^{\circ}$ C; (G1.4 refers to non-stimulated cells). The graph represents insulin secretion normalized to DNA concentration ( $n = 4$  independent experiments). **B** REV-ERBa was silenced in INS-1E cells by siRNA. Scramble RNA (Scr) was used as a control. Cells were then exposed to glucotoxicity for 48 h (G30 vs. G11). Following a 2 h quiescent period in Krebs 1.4 mM glucose (G1.4), cells were stimulated with 16.7 mM glucose (G16.7) for 1 h at 37  $^{\circ}$ C; (G1.4 refers to non-stimulated cells). The graph represents insulin secretion normalized to DNA concentration ( $n = 4$  independent experiments). The bottom graphs represent the stimulation index (ratio G16.7: G1.4). Data are expressed as mean  $\pm$  SEM; \* $P < 0.05$ , \*\* $P < 0.01$ , \*\*\* $P < 0.001$  vs. G1.4 (unless specified).

Insulin was measured by using a human insulin ELISA kit (ALPCO). Insulin values were normalized to insulin content.

### Bioinformatics assessment of REV-ERBa genomic footprinting in human islets

Publicly available Assay for Transposase-Accessible Chromatin using sequencing (ATAC-seq) libraries and corresponding peak-sets from 5 non-diabetic (ND) and 5 type 2 diabetic pancreatic islet donors with comparable demographics were obtained from SRP117935 [35]. In order to define genome-wide REV-ERBa binding to cis-regulatory elements in ND and T2DM islets, we utilized HmM-based Identification of Transcription factor footprints (HINT) [36]. Raw binary alignment maps (BAM) and browser extensible data peak files (BED) were first imported into HINT and subsequently utilized to identify REV-ERBa binding sites using the function *rgt-hint footprinting* with the following options: *--atac-seq*, *--paired-end*, *--organism = hg19*. The Homo sapiens Comprehensive Model Collection (HOCOMOCO) version 11 transcription factor binding model was used to define REV-ERBa binding sites. REV-ERBa footprints observed in  $\geq 2$  ND or T2DM samples were retained for downstream analysis. To examine REV-ERBa binding in promoter regions ( $\pm 1$  kb from TSS), we annotated REV-ERBa footprints using the Genomic Regions Enrichment of Annotations Tool (GREAT) v4.0.4 and subsequently used BEDTools v2.29.2 to calculate common and differential REV-ERBa binding within these regions. Enrichment of annotated REV-ERBa footprints to GO: Biological Process and Molecular Function pathways were performed by GREAT.

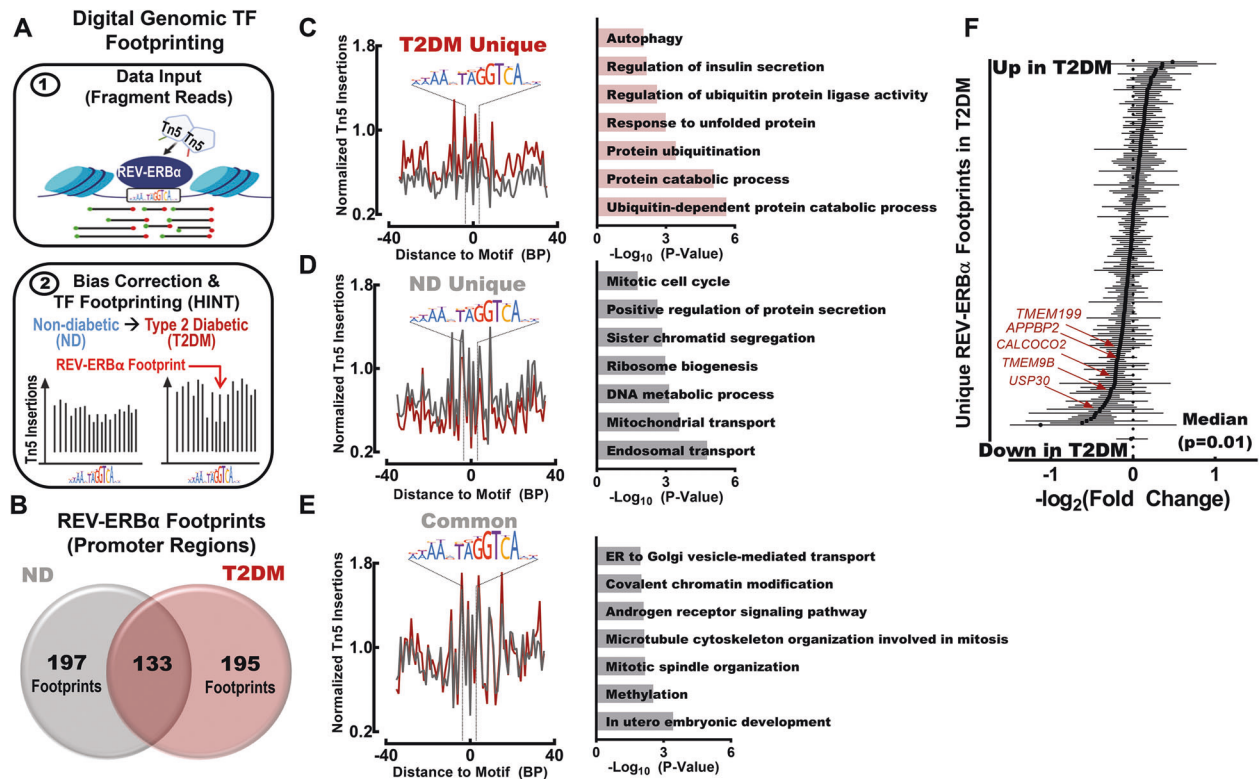
### Meta-analysis of publicly available human islet transcriptomes of non-diabetic (ND) and type 2 diabetic (T2DM) islets

Publicly available human islet microarray datasets comparing the transcriptome of non-diabetic and type 2 diabetic islets were queried using the National Center for Biotechnology Information's Gene Expression

Omnibus (GEO) using the search terms: "T2D/type 2 diabetes," "pancreatic islet/islet," and "Homo sapiens." From our search, we obtained 5 studies containing at least five non-diabetic and five type 2 diabetic donors: GSE38642 [63], GSE 25724 [64], GSE20966 [65], GSE76894 [66], and GSE76895 [66]. The raw data was downloaded from <https://www.ncbi.nlm.nih.gov/geo/query/acc.cgi?acc=GSEXXXXX>. In studies where glycemia was assessed (GSE38642; GSE76895), non-diabetic samples with impaired glucose tolerance (HbA1c  $> 5.7\%$  or noted), unknown glycemia, and type 3 diabetes were excluded. A total of 156 non-diabetic and 81 type 2 diabetic samples were retained for downstream analysis. The raw.CEL files were loaded into the R package Affy v1.68 for normalization of probe intensity by the MAS 5.0 algorithm [67]. Following normalization, low expressing probes ( $\log_2(\text{intensity}) \leq 5$ ) were excluded if they were expressed in less than 50%, minus one sample. BioMart was then used to annotate the probes to their corresponding target genes and only probes that successfully annotated to coding genes were retained for downstream analysis. The filtered expression matrix was subsequently loaded into the LIMMA v3.46.0 (Linear Models for Microarray data) package and differential analysis between ND and T2DM islets was performed for each dataset using the empirical Bayes procedure [68]. To combine the differential expression analysis from each of the 5 studies, we inputted the filtered analysis from LIMMA into MetaVolcanoR v1.4.0 and subsequently performed random effect modeling to assess and summarize the variance of expression for each gene between ND and T2DM islets. Subsequently, we annotated the REV-ERBa footprints unique in T2DM islets to the nearest gene loci using GREAT v4.0.4 [69] and performed a one-sample Wilcoxon test to compare the expression of these genes in ND versus T2DM islets across the 5 studies based upon the random effects model calculated above.

### Statistical analysis

Results are expressed as the means  $\pm$  SEM. for  $n$  independent experiments, as indicated in the figure legends. Statistical analyses were carried out



**Fig. 9** REV-ERBα preferentially binds to promoter regions of genes regulating protein degradation and autophagy in T2DM human islets. **A** Schematic outlining digital genomic transcription factor (TF) footprinting from ATAC-seq of ND and T2DM islet samples (SRP117935) [35]. Transcription factors (e.g., REV-ERBα) protect against Tn5 digestion, resulting in a local decrease in chromatin accessibility ('footprint'). This enables for identification and differential analysis of transcription factor binding at regulatory motifs in non-diabetic (ND) versus Type 2 Diabetic (T2DM) islets using the HmM-based Identification of Transcription factor footprint framework (HINT) [36]. **B** Venn diagram highlighting the overlap of REV-ERBα footprints identified in promoter regions ( $\pm 1$  kb from TSS) from at least two ND and/or T2DM islet samples ( $n = 5$  ND and  $n = 5$  T2DM samples). **C–E** (left): Representative ND and T2DM REV-ERBα footprints uniquely observed in T2DM islets (top), uniquely in ND islets (middle), and common (bottom) in both ND and T2DM islets within promoter regions. The signal is normalized to the total read depth of each sample and is plotted  $\pm 35$  bp from the REV-ERBα motif center. **C–E** (right): Enriched GO: Biological Process pathways annotated from T2DM unique (top), ND unique (middle), and common (bottom) REV-ERBα footprints in promoter regions. **F** Forrest plot illustrating results of the meta-analysis for genes annotated as REV-ERBα footprints (unique to T2DM) derived from 5 publicly available human islet microarray datasets comparing the transcriptome of non-diabetic and type 2 diabetic islets (GSE38642 [63], GSE 25724 [64], GSE20966 [65], GSE76894 [66], and GSE76895 [66]). Red arrows highlight common genetic regulators of autophagy and protein degradation in T2DM.

using Student's *t* test or one-way analysis of variance followed by Sidak's post hoc test for multiple comparisons using GraphPad Prism 7. A *P* value of  $<0.05$  was taken as evidence of statistical significance (\**P*  $< 0.05$ , \*\**P*  $< 0.01$ , \*\*\**P*  $< 0.001$ ).

## DATA AVAILABILITY

The experimental data sets generated and/or analyzed during the current study are available from the corresponding author upon reasonable request. No applicable resources were generated during the current study.

## REFERENCES

- Lambelet M, Terra LF, Fukaya M, Meyerovich K, Labriola L, Cardozo AK, et al. Dysfunctional autophagy following exposure to pro-inflammatory cytokines contributes to pancreatic beta-cell apoptosis. *Cell Death Dis.* 2018;9:96.
- Lee MS. Role of islet beta cell autophagy in the pathogenesis of diabetes. *Trends Endocrinol Metab.* 2014;25:620–7.
- Martino L, Masini M, Novelli M, Beffy P, Bugliani M, Marselli L, et al. Palmitate activates autophagy in INS-1E beta-cells and in isolated rat and human pancreatic islets. *PLoS ONE.* 2012;7:e36188.
- Rivera JF, Gurlo T, Daval M, Huang CJ, Matveyenko AV, Butler PC, et al. Human-IAPP disrupts the autophagy/lysosomal pathway in pancreatic beta-cells: protective role of p62-positive cytoplasmic inclusions. *Cell Death Differ.* 2011;18:415–26.
- Zummo FP, Cullen KS, Honkanen-Scott M, Shaw JAM, Lovat PE, Arden C. Glucagon-like peptide 1 protects pancreatic beta-cells from death by increasing autophagic flux and restoring lysosomal function. *Diabetes.* 2017;66:1272–85.
- Costes S, Langen R, Gurlo T, Matveyenko AV, Butler PC. beta-Cell failure in type 2 diabetes: a case of asking too much of too few? *Diabetes.* 2013;62:327–35.
- Costes S. Targeting protein misfolding to protect pancreatic beta-cells in type 2 diabetes. *Curr Opin Pharmacol.* 2018;43:104–10.
- Ebato C, Uchida T, Arakawa M, Komatsu M, Ueno T, Komiya K, et al. Autophagy is important in islet homeostasis and compensatory increase of beta cell mass in response to high-fat diet. *Cell Metab.* 2008;8:325–32.
- Jung HS, Chung KW, Won Kim J, Kim J, Komatsu M, Tanaka K, et al. Loss of autophagy diminishes pancreatic beta cell mass and function with resultant hyperglycemia. *Cell Metab.* 2008;8:318–24.
- Rivera JF, Costes S, Gurlo T, Glabe CG, Butler PC. Autophagy defends pancreatic beta cells from human islet amyloid polypeptide-induced toxicity. *J Clin Invest.* 2014;124:3489–500.
- Masini M, Lupi R, Bugliani M, Boggi U, Filipponi F, Masiello P, et al. A role for autophagy in beta-cell life and death. *Islets.* 2009;1:157–9.
- Javed N, Matveyenko AV. Circadian etiology of type 2 diabetes mellitus. *Physiology.* 2018;33:138–50.
- Perelis M, Ramsey KM, Marcheva B, Bass J. Circadian transcription from beta cell function to diabetes pathophysiology. *J Biol Rhythms.* 2016;31:323–36.
- Takahashi JS, Hong HK, Ko CH, McDearmon EL. The genetics of mammalian circadian order and disorder: implications for physiology and disease. *Nat Rev Genet.* 2008;9:764–75.



15. Preitner N, Damiola F, Lopez-Molina L, Zakany J, Duboule D, Albrecht U, et al. The orphan nuclear receptor REV-ERB $\alpha$  controls circadian transcription within the positive limb of the mammalian circadian oscillator. *Cell*. 2002;110:251–60.
16. Bass J, Lazar MA. Circadian time signatures of fitness and disease. *Science*. 2016;354:994–9.
17. Sulli G, Rommel A, Wang X, Kolar MJ, Puca F, Saghatelian A, et al. Pharmacological activation of REV-ERBs is lethal in cancer and oncogene-induced senescence. *Nature*. 2018;553:351–5.
18. Woldt E, Sebt Y, Solt LA, Duhem C, Lancel S, Eeckhoutte J, et al. Rev-erb- $\alpha$  modulates skeletal muscle oxidative capacity by regulating mitochondrial biogenesis and autophagy. *Nat Med*. 2013;19:1039–46.
19. Andersen PAK, Petrenko V, Rose PH, Koomen M, Fischer N, Ghiasi SM, et al. Proinflammatory cytokines perturb mouse and human pancreatic islet circadian rhythmicity and induce uncoordinated beta-cell clock gene expression via nitric oxide, lysine deacetylases, and immunoproteasomal activity. *Int J Mol Sci*. 2020;22:83.
20. Javeed N, Brown MR, Rakshit K, Her T, Sen SK, Matveyenko AV. Proinflammatory cytokine interleukin 1 $\beta$  disrupts beta-cell circadian clock function and regulation of insulin secretion. *Endocrinology*. 2021;162:bqaa084.
21. Abe H, Uchida T, Hara A, Mizukami H, Komiya K, Koike M, et al. Exendin-4 improves beta-cell function in autophagy-deficient beta-cells. *Endocrinology*. 2013;154:4512–24.
22. Vivot K, Pasquier A, Goginashvili A, Ricci R. Breaking bad and breaking good: beta-cell autophagy pathways in diabetes. *J Mol Biol*. 2020;432:1494–513.
23. Griffin P, Dimitry JM, Sheehan PW, Lananna BV, Guo C, Robinette ML, et al. Circadian clock protein Rev-erb $\alpha$  regulates neuroinflammation. *Proc Natl Acad Sci USA*. 2019;116:5102–7.
24. Petrenko V, Gandasi NR, Sage D, Tengholm A, Barg S, Dibner C. In pancreatic islets from type 2 diabetes patients, the dampened circadian oscillators lead to reduced insulin and glucagon exocytosis. *Proc Natl Acad Sci USA*. 2020;117:2484–95.
25. Reitz CJ, Alibhai FJ, Khatua TN, Rasouli M, Bridle BW, Burris TP, et al. SR9009 administered for one day after myocardial ischemia-reperfusion prevents heart failure in mice by targeting the cardiac inflammasome. *Commun Biol*. 2019;2:353.
26. Solt LA, Wang Y, Banerjee S, Hughes T, Kojetin DJ, Lundasen T, et al. Regulation of circadian behaviour and metabolism by synthetic REV-ERB agonists. *Nature*. 2012;485:62–8.
27. Kirkin V, McEwan DG, Novak I, Dikic I. A role for ubiquitin in selective autophagy. *Mol Cell*. 2009;34:259–69.
28. Waguri S, Komatsu M. Biochemical and morphological detection of inclusion bodies in autophagy-deficient mice. *Methods Enzymol*. 2009;453:181–96.
29. Kimura S, Noda T, Yoshimori T. Dissection of the autophagosome maturation process by a novel reporter protein, tandem fluorescent-tagged LC3. *Autophagy*. 2007;3:452–60.
30. Riahi Y, Wikstrom JD, Bachar-Wikstrom E, Polin N, Zucker H, Lee MS, et al. Autophagy is a major regulator of beta cell insulin homeostasis. *Diabetologia*. 2016;59:1480–91.
31. Bugliani M, Mossuto S, Grano F, Suleiman M, Marselli L, Boggi U, et al. Modulation of autophagy influences the function and survival of human pancreatic beta cells under endoplasmic reticulum stress conditions and in type 2 diabetes. *Front Endocrinol*. 2019;10:52.
32. Welch RD, Billon C, Valfort AC, Burris TP, Flaveny CA. Pharmacological inhibition of REV-ERB stimulates differentiation, inhibits turnover and reduces fibrosis in dystrophic muscle. *Sci Rep*. 2017;7:17142.
33. Baek S, Goldstein I, Hager GL. Bivariate genomic footprinting detects changes in transcription factor activity. *Cell Rep*. 2017;19:1710–22.
34. Bentsen M, Goymann P, Schultheis H, Klee K, Petrova A, Wiegandt R, et al. ATAC-seq footprinting unravels kinetics of transcription factor binding during zygotic genome activation. *Nat Commun*. 2020;11:1–11.
35. Khetan S, Kursawe R, Youn A, Lawlor N, Jillette A, Marquez EJ, et al. Type 2 diabetes-associated genetic variants regulate chromatin accessibility in human islets. *Diabetes*. 2018;67:2466–77.
36. Li Z, Schulz MH, Look T, Begemann M, Zenke M, Costa IG. Identification of transcription factor binding sites using ATAC-seq. *Genome Biol*. 2019;20:1–21.
37. Mackeh R, Perdiz D, Lorin S, Codogno P, Pous C. Autophagy and microtubules - new story, old players. *J Cell Sci*. 2013;126:1071–80.
38. Franks PW, McCarthy ML. Exposing the exposures responsible for type 2 diabetes and obesity. *Science*. 2016;354:69–73.
39. Boni-Schnetzler M, Meier DT. Islet inflammation in type 2 diabetes. *Semin Immunopathol*. 2019;41:501–13.
40. Prentki M, Peyot ML, Masiello P, Madiraju SRM. Nutrient-induced metabolic stress, adaptation, detoxification, and toxicity in the pancreatic beta-cell. *Diabetes*. 2020;69:279–90.
41. Costes S, Gurlo T, Rivera JF, Butler PC. UCHL1 deficiency exacerbates human islet amyloid polypeptide toxicity in beta-cells: evidence of interplay between the ubiquitin/proteasome system and autophagy. *Autophagy*. 2014;10:1004–14.
42. Huang G, Zhang F, Ye Q, Wang H. The circadian clock regulates autophagy directly through the nuclear hormone receptor Nr1d1/Rev-erb $\alpha$  and indirectly via Cebpb/C/ebpb $\beta$  in zebrafish. *Autophagy*. 2016;12:1292–309.
43. Marasco MR, Linnemann AK. beta-Cell autophagy in diabetes pathogenesis. *Endocrinology*. 2018;159:2127–41.
44. Ren L, Yang H, Cui Y, Xu S, Sun F, Tian N, et al. Autophagy is essential for the differentiation of porcine PSCs into insulin-producing cells. *Biochem Biophys Res Commun*. 2017;488:471–6.
45. Bachar-Wikstrom E, Wikstrom JD, Ariav Y, Tirosh B, Kaiser N, Cerasi E, et al. Stimulation of autophagy improves endoplasmic reticulum stress-induced diabetes. *Diabetes*. 2013;62:1227–37.
46. Rivera JF, Gurlo T, Daval M, Huang CJ, Matveyenko AV, Butler PC, et al. Human-IAPP disrupts the autophagy/lysosomal pathway in pancreatic beta-cells: protective role of p62-positive cytoplasmic inclusions. *Cell Death Differ*. 2011;18:415–26.
47. Kim J, Park K, Kim MJ, Lim H, Kim KH, Kim SW, et al. An autophagy enhancer ameliorates diabetes of human IAPP-transgenic mice through clearance of amyloidogenic oligomer. *Nat Commun*. 2021;12:183.
48. Matveyenko AV, Butler PC. Relationship between beta-cell mass and diabetes onset. *Diabetes Obes Metab*. 2008;10:23–31.
49. Petrenko V, Saini C, Giovannoni L, Gobet C, Sage D, Unser M, et al. Pancreatic alpha- and beta-cellular clocks have distinct molecular properties and impact on islet hormone secretion and gene expression. *Genes Dev*. 2017;31:383–98.
50. Rakshit K, Matveyenko AV. Induction of core circadian clock transcription factor Bmal1 enhances beta-cell function and protects against obesity-induced glucose intolerance. *Diabetes*. 2021;70:143–54.
51. Perelis M, Marcheva B, Ramsey KM, Schipma MJ, Hutchison AL, Taguchi A, et al. Pancreatic beta cell enhancers regulate rhythmic transcription of genes controlling insulin secretion. *Science*. 2015;350:aac4250.
52. Vieira E, Marroqui L, Batista TM, Caballero-Garrido E, Carneiro EM, Boschero AC, et al. The clock gene Rev-erb $\alpha$  regulates pancreatic beta-cell function: modulation by leptin and high-fat diet. *Endocrinology*. 2012;153:592–601.
53. Nishiyama K, Hirai K. The melatonin agonist ramelteon induces duration-dependent clock gene expression through cAMP signaling in pancreatic INS-1 beta-cells. *PLoS ONE*. 2014;9:e102073.
54. Dierickx P, Emmett MJ, Jiang C, Uehara K, Liu M, Adlanmerini M, et al. SR9009 has REV-ERB-independent effects on cell proliferation and metabolism. *Proc Natl Acad Sci USA*. 2019;116:12147–52.
55. Griffin P, Dimitry JM, Sheehan PW, Lananna BV, Guo C, Robinette ML, et al. Circadian clock protein Rev-erb $\alpha$  regulates neuroinflammation. *Proc Natl Acad Sci USA*. 2019;116:5102–7.
56. Lee J, Kim DE, Griffin P, Sheehan PW, Kim DH, Musiek ES, et al. Inhibition of REV-ERBs stimulates microglial amyloid-beta clearance and reduces amyloid plaque deposition in the 5XFAD mouse model of Alzheimer's disease. *Aging Cell*. 2020;19:e13078.
57. Bucher P, Mathe Z, Morel P, Bosco D, Andres A, Kurfuest M, et al. Assessment of a novel two-component enzyme preparation for human islet isolation and transplantation. *Transplantation*. 2005;79:91–7.
58. Ruiz L, Gurlo T, Ravier MA, Wojtuszczyk A, Mathieu J, Brown MR, et al. Proteasomal degradation of the histone acetyl transferase p300 contributes to beta-cell injury in a diabetes environment. *Cell Death Dis*. 2018;9:600.
59. Merglen A, Theander S, Rubi B, Chaffard G, Wollheim CB, Maechler P. Glucose sensitivity and metabolism-secretion coupling studied during two-year continuous culture in INS-1E insulinoma cells. *Endocrinology*. 2004;145:667–78.
60. Ravassard P, Hazhouz Y, Pechberty S, Bricout-Neveu E, Armanet M, Czernichow P, et al. A genetically engineered human pancreatic beta cell line exhibiting glucose-inducible insulin secretion. *J Clin Invest*. 2011;121:3589–97.
61. N'Diaye EN, Kajihara KK, Hsieh I, Morisaki H, Debnath J, Brown EJ. PLIC proteins or ubiquitins regulate autophagy-dependent cell survival during nutrient starvation. *EMBO Rep*. 2009;10:173–9.
62. Broca C, Quoyer J, Costes S, Linck N, Varrault A, Deffayet PM, et al. beta-Arrestin 1 is required for PAC1 receptor-mediated potentiation of long-lasting ERK1/2 activation by glucose in pancreatic beta-cells. *J Biol Chem*. 2009;284:4332–42.
63. Taneera J, Lang S, Sharma A, Fadista J, Zhou Y, Ahlqvist E, et al. A systems genetics approach identifies genes and pathways for type 2 diabetes in human islets. *Cell Metab*. 2012;16:122–34.
64. Dominguez V, Raimondi C, Somanath S, Bugliani M, Loder MK, Edling CE, et al. Class II phosphoinositide 3-kinase regulates exocytosis of insulin granules in pancreatic  $\beta$  cells. *J Biol Chem*. 2011;286:4216–25.
65. Marselli L, Thorne J, Dahiya S, Sgroi DC, Sharma A, Bonner-Weir S, et al. Gene expression profiles of Beta-cell enriched tissue obtained by laser capture microdissection from subjects with type 2 diabetes. *PLoS ONE*. 2010;5:e11499.
66. Solimena M, Schulte AM, Marselli L, Ehehalt F, Richter D, Kleeberg M, et al. Systems biology of the IMIDIA biobank from organ donors and pancreatectomised



- patients defines a novel transcriptomic signature of islets from individuals with type 2 diabetes. *Diabetologia*. 2018;61:641–57.
67. Gautier L, Cope L, Bolstad BM, Irizarry RA. *affy*—analysis of Affymetrix GeneChip data at the probe level. *Bioinformatics*. 2004;20:307–15.
  68. Ritchie ME, Phipson B, Wu D, Hu Y, Law CW, Shi W. et al. *limma* powers differential expression analyses for RNA-sequencing and microarray studies. *Nucleic Acids Res*. 2015;43:e47.
  69. McLean CY, Bristor D, Hiller M, Clarke SL, Schaar BT, Lowe CB, et al. GREAT improves functional interpretation of cis-regulatory regions. *Nat Biotechnol*. 2010;28:495–501.

## ACKNOWLEDGEMENTS

The authors acknowledge Dr. Vachieri-Lahaye and the “Coordination des dons d’organes” of Montpellier CHU for providing human pancreas. The authors thank Nelly Pirot at RHEM facility (Montpellier, France) for technical assistance.

## AUTHOR CONTRIBUTIONS

MRB, DL, MD, OV, CB, GB, AW, SD, MAR, AVM, and SC contributed to the data research. MRB, MAR, AVM, and SC designed the study. MRB, DL, MAR, AVM, and SC assisted in report preparation. AVM and SC supervised the study. All authors have read and approved the final manuscript.

## FUNDING

This work was supported by a research allocation from the “Société Francophone du Diabète” (SFD, Paris, France to SC) and from the National Institutes of Health (R01DK098468 to AVM and F99DK123834 to MRB).

## COMPETING INTERESTS

The authors declare no competing interests.

## ADDITIONAL INFORMATION

**Supplementary information** The online version contains supplementary material available at <https://doi.org/10.1038/s41419-022-04767-z>.

**Correspondence** and requests for materials should be addressed to Aleksey V. Matveyenko or Safia Costes.

**Reprints and permission information** is available at <http://www.nature.com/reprints>

**Publisher’s note** Springer Nature remains neutral with regard to jurisdictional claims in published maps and institutional affiliations.



**Open Access** This article is licensed under a Creative Commons Attribution 4.0 International License, which permits use, sharing, adaptation, distribution and reproduction in any medium or format, as long as you give appropriate credit to the original author(s) and the source, provide a link to the Creative Commons license, and indicate if changes were made. The images or other third party material in this article are included in the article’s Creative Commons license, unless indicated otherwise in a credit line to the material. If material is not included in the article’s Creative Commons license and your intended use is not permitted by statutory regulation or exceeds the permitted use, you will need to obtain permission directly from the copyright holder. To view a copy of this license, visit <http://creativecommons.org/licenses/by/4.0/>.

© The Author(s) 2022