



HAL
open science

A new European land systems representation accounting for landscape characteristics

Yue Dou, Francesca Cosentino, Ziga Malek, Luigi Maiorano, Wilfried Thuiller, Peter Verburg

► To cite this version:

Yue Dou, Francesca Cosentino, Ziga Malek, Luigi Maiorano, Wilfried Thuiller, et al.. A new European land systems representation accounting for landscape characteristics. *Landscape Ecology*, 2021, 36 (8), pp.2215-2234. 10.1007/s10980-021-01227-5 . hal-03750702

HAL Id: hal-03750702

<https://cnrs.hal.science/hal-03750702>

Submitted on 18 Jan 2024

HAL is a multi-disciplinary open access archive for the deposit and dissemination of scientific research documents, whether they are published or not. The documents may come from teaching and research institutions in France or abroad, or from public or private research centers.

L'archive ouverte pluridisciplinaire **HAL**, est destinée au dépôt et à la diffusion de documents scientifiques de niveau recherche, publiés ou non, émanant des établissements d'enseignement et de recherche français ou étrangers, des laboratoires publics ou privés.



Distributed under a Creative Commons Attribution 4.0 International License



A new European land systems representation accounting for landscape characteristics

Yue Dou · Francesca Cosentino · Ziga Malek · Luigi Maiorano · Wilfried Thuiller · Peter H. Verburg

Received: 8 August 2020 / Accepted: 26 February 2021 / Published online: 16 March 2021
© The Author(s) 2021

Abstract

Context While land use change is the main driver of biodiversity loss, most biodiversity assessments either ignore it or use a simple land cover representation. Land cover representations lack the representation of land use and landscape characteristics relevant to biodiversity modeling.

Objectives We developed a comprehensive and high-resolution representation of European land systems on a 1-km² grid integrating important land use and landscape characteristics.

Supplementary Information The online version of this article contains supplementary material which is available at (<https://doi.org/10.1007/s10980-021-01227-5>).

Y. Dou (✉) · Z. Malek · P. H. Verburg
Environmental Geography Group, Institute
for Environmental Studies (IVM), Vrije Universiteit
Amsterdam, De Boelelaan 1087, 1081 HV Amsterdam,
The Netherlands
e-mail: yue.dou@vu.nl

F. Cosentino · L. Maiorano
Department of Biology and Biotechnologies “Charles
Darwin”, University of Rome “La Sapienza”, Rome, Italy

W. Thuiller
Laboratoire D’Ecologie Alpine, LECA, Université
Grenoble Alpes, CNRS, Université Savoie Mont Blanc,
Grenoble, France

P. H. Verburg
Swiss Federal Institute for Forest, Snow and Landscape
Research (WSL), Birmensdorf, Switzerland

Methods Combining the recent data on land cover and land use intensities, we applied an expert-based hierarchical classification approach and identified land systems that are common in Europe and meaningful for studying biodiversity. We tested the benefits of using this map as compared to land cover information to predict the distribution of bird species having different vulnerability to landscape and land use change.

Results Next to landscapes dominated by one land cover, mosaic landscapes cover 14.5% of European terrestrial surface. When using the land system map, species distribution models demonstrate substantially higher predictive ability (up to 19% higher) as compared to models based on land cover maps. Our map consistently contributes more to the spatial distribution of the tested species than the use of land cover data (3.9 to 39.1% higher).

Conclusions A land systems classification including essential aspects of landscape and land management into a consistent classification can improve upon traditional land cover maps in large-scale biodiversity assessment. The classification balances data availability at continental scale with vital information needs for various ecological studies.

Keywords Land system · Land management · Land use intensity · Biodiversity assessment · Species distribution model · Large-scale

Introduction

Landscape ecology envisions the landscape as the outcome of the complex relationship between humans and nature (Opdam et al. 2018). Land system science defines land systems, similarly, as the terrestrial component of the Earth system encompassing all processes and activities related to the human use of land, including socioeconomic, technological and organizational investments and arrangements (Verburg et al. 2013a). Land system change is seen as both a cause and consequence of socio-ecological processes, rather than as a sole outcome, or emergent property, of human–environment interactions (Verburg et al. 2015). Land system science and landscape ecology share a lot of concepts of interest: the acknowledgement of human activities as a main actor of land use and landscape change (Lambin et al. 2001; Turner II et al. 2007; Roy Chowdhury and Turner 2019); the importance of addressing multiple spatial and temporal scales (Veldkamp and Lambin 2001; Dearing et al. 2010); the attention for human benefits of nature through the concepts of ecosystem services and Nature’s contributions to People (Wu 2013) and the attention for sustainability solutions (Nielsen et al. 2019). At the same time, landscape ecologists have been putting a strong emphasis on characterizing landscape pattern across spatial and temporal scales (O’Neill et al. 1988; Li and Wu 2004; Wu 2004), and understanding how landscape structure and composition emerge from socio-ecological processes and impact the functioning and performance of ecosystems (Nagendra et al. 2004). Land system science has, in contrast, often focused on the characterization and explanation of land use change at the level of individual pixels (observed from remote sensing), plots or at the level of individual or collective actors (Overmars and Verburg 2006; Manson 2007), with less specific attention for the landscape patterns and structures. Despite common analytical methods, these different foci can lead to different representations of the landscape and its dynamics, having repercussions for interpretation and assessment of drivers and impacts of land use and landscape changes.

While both disciplines acknowledge the role of human use of land, both often represent land

use and landscapes in empirical studies mostly by land cover. This is a direct result of the relative ease of observing land cover from remote sensing while land use intensity or land use management is more difficult to characterize and data are often absent (Kuemmerle et al. 2013; Erb et al. 2017). This is especially the case for larger scale assessments (Verburg et al. 2013b). Rather than representing the landscape and its composition, the dominant land cover is used to represent the land system and landscape. Some approaches use a representation that describes the different land cover fractions, but ignoring their spatial configuration. It is well-known that many of the Earth’s landscape are mosaics of different land covers, encompassing novel ecosystems (Perring and Ellis 2013). Although coarse-scale land cover representations are always constrained in thematic resolution, ignoring these important mosaic landscapes is an important omission.

More recently land system representations have been proposed to better capture human use of the land, or some aspects of landscape configuration. For example, Ornetsmüller et al. (2018) distinguished permanent agricultural use from shifting cultivation in a land systems classification for Laos while Debonne et al. (2018) represented smallholders vs large scale land acquisitions explicitly given their different drivers and social and environmental impacts. On a global scale, Ellis and Ramankutty (2008) and Václavík et al (2013) used a wide range of environmental and demographic conditions to identify archetypical combinations of socio-ecological conditions defining land use, while van Asselen and Verburg (2012) used information on land cover, input intensity and livestock to subdivide global land cover into land systems. These land system representations have been created for various purposes and, while making the best use of available data, improved over land cover classifications by including specific aspects relevant to landscape ecology and land system science. However, in spite of this progress, most global assessments for biodiversity such as for IPBES and IPCC are still based on relatively rough and classical land cover representations.

In particular, most large-scale biodiversity modelling (especially those using species distribution modelling, SDM) have so far either focused on the

impacts of climate change (Thuiller et al. 2019) or on climate change with some broad land cover classes (Thuiller et al. 2014). This has been done in SDM by simple filtering species distributions by land cover classes (Maiorano et al. 2013; Powers and Jetz 2019) or land use types (Newbold 2018). Another approach in biodiversity assessments is to assign expert based values to land use, based on the observed or expected effect it has on biodiversity, or based on the level of naturalness (Pouzols et al. 2014; Di Minin et al. 2016). Such approaches not only require a well-established relationship between different species and the land use impact, but also neglect some landscape characters and land management that play important roles in biodiversity. While some large-scale biodiversity assessments account for nitrogen application and habitat fragmentation as additional stressors (Schipper et al. 2020), these are independently addressed from land cover information without using an integrated landscape approach.

There were several reasons to ignore land use or land cover in these models that relate species occurrence (or abundance) to environmental variables. The first one was that since land cover and land use are mainly driven by climate, they do not bring much additional information, and rather create some multi-collinearity issues when combined with climatic variables in SDMs (Thuiller et al. 2004). The second reason is that past land cover or land use maps were generally of poor thematic resolution (e.g. forest, urban, cropland, grassland and other) which prevent to estimate the tight association that could arise between a given species and for instance extensive croplands. Still, some recent exercises have shown the interest of using detailed land use classification to predict species extinction at global scale (Powers and Jetz 2019). IPBES (Diaz et al. 2019) also identified land use change as the main driver of biodiversity loss and several papers have argued for inclusion of land use change as part of biodiversity assessments (Titeux et al. 2016; Randin et al. 2020).

A way to possibly advance large-scale biodiversity assessments is to provide a land system classifications map that includes more ecologically relevant variables describing landscape and land

management conditions. In this paper we aim to present a continental-scale land system classification for Europe making best use of available data that moves beyond the many assessments of biodiversity that are using rough land cover classes and relationships between land cover and habitat for species (Newbold 2018; Powers and Jetz 2019). We focus our analysis on including aspects of landscape structure and land use intensity. There is sufficient evidence that land use intensity (Beckmann et al. 2019) and landscape structure (Walz and Syrbe 2013; Boesing et al. 2017) are strong determinants of the land use impact on biodiversity. Recent studies showed the impact of forest management types on species richness (Chaudhary et al. 2016) and the differences of accounting for forest management in addition to forest cover change on global biodiversity (Schulze et al. 2020). Other studies indicated the role of agricultural management (Beckmann et al. 2019) and livestock grazing (Zhang et al. 2017; Li et al. 2019), as well as the importance of landscape mosaic for conservation (Harvey et al. 2008) and ecosystem service provisioning (Dainese et al. 2019). While land use studies often characterize urban area by the amount of build-up land (Seto et al. 2012; van Vliet et al. 2019) the structure of urbanization has a strong impact on biodiversity (Malkinson et al. 2018). In peri-urban areas the build-up land cover is often not vast, but the widespread disturbance through human activities and infrastructure causes much larger declines in biodiversity than the overall build-up area would suggest (Buczowski and Richmond 2012; Concepción et al. 2016).

The land system typology presented in this paper aims at incorporating important elements of the landscape and land system relevant to biodiversity. To demonstrate the added value of such representation compared to the often-used land cover classifications, we used bioclimatic variables and the land system map to model the species distribution on nine selected bird species that have wide habitat range across Europe with different vulnerability to land use and landscapes. We hypothesized that the predictive ability of models and variable contribution to the spatial distribution is improved by the new land system typology.

Table 1 Overview of land systems

Land system	Subdivisions	Description of systems
1. Settlement systems	1.1 Low-intensity settlement	Low-medium density, far away from urban cores
	1.2 Medium-intensity settlement	Medium density or adjacent to urban core
	1.3 High-intensity settlement	High imperviousness
2. Forest systems	2.1 Low-intensity forest	High probability as primary forest and low/medium wood production
	2.2 Medium-intensity forest	Low probability as primary forest and medium wood production
	2.3 High-intensity forest	Low probability as primary forest and high wood production
3. Cropland systems	3.1 Low-intensity arable land	Low inorganic fertilizer input, small field size
	3.2 Medium-intensity arable land	Medium inorganic fertilizer input, medium field size
	3.3 High-intensity arable land	High inorganic fertilizer input, large field size
	3.4 Low-intensity permanent crops	Vineyards, olive groves, fruit gardens, with understory vegetation, this class also has mixed annual and permanent crops
	3.5 High-intensity permanent crops	Vineyards, olive groves, fruit gardens, without understory
4. Grassland systems	4.1 Low-intensity grassland	Low density of livestock, low inorganic fertilizer input, and low mowing frequency
	4.2 Medium-intensity grassland	Medium density of livestock, medium use of inorganic fertilizer, and medium mowing frequency
	4.3 High-intensity grassland	High density of livestock, high inorganic fertilizer input, and/or high mowing frequency
5. Shrub		Areas dominated by shrub land cover or similar
6. Rocks and bare soil		Areas dominated by rocks, bare soil, or similar
7. Mosaic systems	7.1 Forest/shrub and cropland mosaics	Areas with small parcels of forest/shrubs and cropland
	7.2 Forest/shrub and grassland mosaic	Areas with small parcels of forest/shrubs and grassland
	7.3 Forest/shrubs and bare mosaics	Areas with small parcels of forest/shrubs and bare land
	7.4 Forest/shrubs and mixed agriculture mosaics	Areas with small parcels of forest/shrubs and mixed areas of cropland and grassland
	7.5.1 Low-intensity agricultural mosaic (cropland and grassland)	Low density of inorganic fertilizer input, small field size, and low livestock density
	7.5.2 Medium-intensity agricultural mosaic (cropland and grassland)	Medium use of inorganic fertilizer, medium field size, and medium livestock density
	7.5.3 High-intensity agricultural mosaic (cropland and grassland)	High inorganic fertilizer input, large field size, and/or large livestock density
8. Snow, water, wetland systems	8.1 Glaciers	Areas dominated by glaciers, wetland, or water body
	8.2 Water body	
	8.3 Wetland	

Materials and methods

Classification overview

We used an expert-based land system classification approach based on variables for which there is evidence of the effect on biodiversity. We operationalized land systems as areas that host one or more land use activities at the landscape level having an impact on species occurrence and biodiversity. We focused, consistent with traditional classifications, on

the following major land systems groups (Table 1): water and wetland systems, human settlement systems, forest systems, grassland systems, cropland systems, and mosaic systems. These land systems are selected based on common land uses in Europe, are represented by major groups in the continent's land use and land cover datasets (ESA and UCLouvain 2010; European Environment Agency 2018) and by expert opinions towards their importance to study the impacts of land use on biodiversity. Particularly, the inclusion of mosaic system and the separation

of forest mosaics and agricultural mosaics is aimed at better capturing the fragmented forest habitat and agricultural composition that certain forest and agricultural species are sensitive to (García-Navas and Thuiller 2020). We also have permanent crops as a sub-system in the cropland category because they can provide vital habitat for certain species and the management styles for permanent crops can generate distinctive biodiversity consequences (Bruggisser et al. 2010; Winter et al. 2018). The threshold of land cover extent for each land system was determined based on two criteria: it indicates the composition of land cover of the system (e.g., covers the majority of the pixel, or the mosaic combinations are meaningful for certain species), and it captures small habitat area requirements. Residential systems also include those with relatively low fractions of build-up land as the impact of associated activities and infrastructure on species is often proportionally large (Buczowski and Richmond 2012; Concepción et al. 2016). These land systems were further classified based on different land use intensity indicators. We also aggregated classes with small areas (the full expert-based hierarchical classification procedure is included in Fig. S3). Our expert-based procedure, although tailored to the European conditions and for use in biodiversity assessments, follows common patterns with other global and regional land system classifications (e.g. Ellis and Ramankutty 2008; van Asselen and Verburg 2012; Herrero et al. 2014; Malek and Verburg 2017; Kikas et al. 2018).

We chose the spatial extent of the European Union (EU) with the United Kingdom (EU28+), Norway, Switzerland, and the Western Balkans (Serbia, Kosovo, North Macedonia, Montenegro, Albania, and Bosnia and Herzegovina). However, we excluded Iceland, Turkey and Europe's Outermost regions and Overseas Countries (mostly islands not present on the European continent) due to data issues, the analytical interests, and their limited importance for assessing continental species and biodiversity. To the best of our knowledge, this is the most complete coverage of land cover and land use analysis at the European scale while most studies do not cover non-EU countries such as Switzerland, Norway, and the Balkans. Such continuity of coverage is important for modeling species migration and projected changes due to climate change. We refer to this region as the non-EU region and the other parts as EU region.

We operated on a 1-km² spatial resolution. Although some land cover data may have a more detailed resolution (e.g., Corine at 100 m or GlobCover at 300 m), the pursuit for a finer resolution than 1-km² is hampered by a lack of the high-resolution data on land use intensity and management. Meanwhile, bio-climatic variables used for the large-scale biodiversity assessment and species distribution modeling are derived from global interpolations across the multitude of existing climatic stations. These interpolations have been made at global scale at 1-km² and are provided from web portals like WorldClim or CHELSA. Some species may be able to thrive in habitat patches smaller than 1-km², however this character, at least in some cases, can be captured by the mosaic land systems that we represent in our typology. Therefore, a spatial resolution of 1-km² is an optimal choice for this study, considering data availability and usage for biodiversity assessment.

We compiled and harmonized data of land cover composition and intensity indicators using a Geographic Information System based approach. Data were chosen based on the following principles: (1) they are publicly available, (2) we prioritized the highest spatial resolution and most recent date, (3) data produced at the European scale have priority over global datasets, (4) if the data were a result of downscaling, we ensure that no co-variables are used in the downscaling that would induce multi-collinearity with other variables often used in biodiversity modeling. (5) Global data were only used if previous criteria cannot be achieved and data gaps are apparent in particular regions. We mostly relied on global data for the non-EU region. All maps were resampled to a 1-km² spatial resolution using the Lambert azimuthal equal-area projection that is frequently used for European maps. The details of data and methods used for each system are discussed below (Overview see Tables 1, S3 and S4, Fig. S3).

Extent of land systems

For land cover extent, we used Copernicus products derived from remote sensing data, such as CORINE land cover 2018 (CLC) (European Environment Agency 2018) and Pan-European High Resolution Layer (HRL) thematic maps (i.e., imperviousness, forests, grassland, water & wetness) (European Environment Agency 2015a, b, c, d). A global glacier

database was used for the extent of glaciers (Global Land Ice Measurements from Space (GLIMS) and National Snow and Ice Data Center 2012) (Table S3). We aggregated the HRL thematic maps from 20 m to 1 km to derive the extent of (1) human settlement, (2) forests, (3) water and wetlands, and (4) grasslands. For the remaining land covers, including croplands (annual and permanent) and other land cover classes (e.g., shrubs, bareland and rocks) we used CLC maps to resample.

Classification thresholds based on the share of particular land cover within the 1-km² pixel were chosen based on expert opinions for each system (Table 1). First, this enabled us to study land cover types that may affect species largely but appear on a smaller scale, such as settlement systems. In addition, we used indicators other than land cover composition to characterize these classes, among which one particular example is the peri-urban and villages that may have less built-up land than cropland and forest cover (van Vliet et al. 2019). Despite the small percentage, these classes may cause profound effects on species activities due to the continuity and irreversibility of human disturbances. Second, compared to most land cover classification that determines the class by the largest land cover, we used a threshold of 70% to classify areas dominated by forest, cropland, and grassland. This is to better describe these classes with homogeneity while defining landscapes with several different land cover classes as mosaics. A pixel that contains multiple land cover components smaller than 70% of the cell is classified as a mosaic system, which is further subdivided by its main land cover type. As we acknowledge that all these thresholds are arbitrary and set to balance the importance of the land system components for biodiversity and the number of complex compound classes, we conducted a sensitivity analysis of the thresholds on the extent of land systems (Supplementary Material). We found only small changes in the overall patterns of land systems upon changing the thresholds within reasonable ranges.

Intensity of land systems

We used a range of metrics to measure land use intensity and landscape characteristics (detailed intensity classification of each system can be found in the supplementary material).

Human settlement systems

Urbanization in Europe undergoes multiple dimensional changes in land cover, land use, and socio-ecological activities (Shaw et al. 2020), and most recent changes are small incremental increases (van Vliet et al. 2019). In comparison to current practices that use “built-up” land or a binary classification of urban and rural area (Seto et al. 2012), we classified three intensity levels for settlement systems: urban core (high intensity), peri-urban (medium intensity), and villages (low intensity) based on the degree of imperviousness and spatial connectivity to urban core. We used the intensity of imperviousness (i.e., each cell has a value from 0 to 100%), namely artificial impermeable cover of soil, as a proxy of urbanization degree, following similar mapping exercises (Linard et al. 2012; van Asselen and Verburg 2012; Demuzere et al. 2019). In addition, we considered the adjacency to urban core areas when distinguishing peri-urban and rural settlements (Linard et al. 2012; Stürck et al. 2018) (Fig. S4).

Forest systems

Forest management and forest types are important to accurately assess biodiversity (Chaudhary et al. 2016; Schulze et al. 2020). We used wood production of Europe (Verkerk et al. 2015) and the probability of finding primary forest (Sabatini et al. 2018) to characterize the intensity of forest use in the EU region (Fig. S5). For the non-EU region, we extracted the forest classes from a global dataset (Schulze et al. 2019). The three classes (i.e., primary, naturally regrown, and planted) were reclassified as low-intensity, medium-intensity, and high-intensity to fit our forest classification (while acknowledging these classes do not fully correspond).

Grassland systems

Three indicators were used to map the intensity of grazing grassland: livestock unit density, nitrogen input, and mowing frequency. We selected three ruminant livestock groups (i.e., cattle, goat, and sheep) from the global dataset on livestock density (Gilbert et al. 2018) and converted them to livestock unit (LSU) density (Eurostat 2013), which is the number of animals equivalent to one adult dairy cow

producing 3000 kg of milk annually (LSU/km²). The nitrogen application rate was calculated using a novel downscaling of statistical data by the Joint Research Center, which included mineral fertilizer input, the manure application and deposition by grazing animals. The indicator of mowing frequency represents the average number of annual mowing events in the period of 2000–2012 (Estel et al. 2018). The LSU density and nitrogen application rates were reclassified into three levels as low, medium, and high. This is based on the biodiversity dynamics relevant to nitrogen application rate (Kleijn et al. 2009) and supported by other studies (van der Zanden et al. 2016; Estel et al. 2018). When combining the three indicators, LSU was used as the primary indicator and then complemented by nitrogen and finally the mowing frequency (Fig. S6). For the non-EU region, we could only use LSU as the indicator due to data unavailability.

Cropland systems

Erb et al. (2013) and Kuehmerle et al. (2013) inventoried the conceptual basis of cropland intensity and provided a range of potential input and output indicators. We focused on agricultural input alone, and chose nitrogen input and field size as indicators with high relevance for many species, to quantify the agricultural intensity.

The nitrogen application rate was retrieved from the same source and reclassified into the same levels as used in grassland system. For the field size, we used the field size map created by Tieskens et al. (2017) and reclassified into small, medium, and large fields. We used the nitrogen as primary intensity factor and the field size as secondary indicator (Fig. S7). If a cropland pixel had high nitrogen input it was classified as high-intensity cropland unless the field size was in the small class, and vice versa.

For the non-EU region, we used two global datasets. One is the global nitrogen application rate dataset from EarthStat (Mueller et al. 2012; West et al. 2014). The other one is the global field size map (Lesiv et al. 2019). For Switzerland, we assumed cropland above 800 m as medium-intensity and below as high-intensity.

In addition to the intensity of annual crops, we singled out permanent crops because they have different management styles and effects on biodiversity. The

understory between stripes of grapes and olive trees are an important indicator both for habitats and management styles (Bruggisser et al. 2010; Winter et al. 2018). Therefore, the second land cover type identified in LUCAS (Eurostat 2018) was selected, representing the understory vegetation, as a biodiversity relevant indicator of management intensity (Fig. S8).

Mosaic systems

Pixels without dominant land cover types were classified as mosaic systems. Two sub-mosaic systems were classified: agricultural mosaics and forest/shrubs mosaics. Croplands and grasslands without tree cover were aggregated to agricultural mosaic systems. This sub-system was further classified into three agricultural intensities: low, medium, and high. Two indicators, LSU and nitrogen application rate from the same source as above, were used. LSU was used as the primary indicator and nitrogen was the secondary indicator (Fig. S9).

The forest/shrub mosaics include mixed land cover types with some portion of forest/shrubs. This is because forest fragments, remnant trees, and small parts of shrubs and bare can serve as valuable habitats for many species. These mixed compositions increase landscape connectivity and preserve potential for restoration (Harvey et al. 2008; Horák et al. 2019). Forest and shrubs were combined as one in the mosaic systems, for their similarity in serving as habitat in a heterogeneous land system. Classes with small areas were assembled into the next class that are most resembling their land cover composition. In total, four forest/shrubs sub-mosaic systems were defined: forest/shrub and cropland, forest/shrub and grassland, forest/shrub and bare land, and forest/shrub and mixed agricultural land.

Using land system map for species distribution modeling

To demonstrate the effect of adding land system and landscape characters for biodiversity assessment, we calibrated a set of species distribution models using an ensemble approach (Guisan et al. 2017). We considered nine bird species with different sensitivity to land use management: three species sensitive to forest management (*Columba oenas*, *Dendrocopos major*, *Lophophanes cristatus*), three species sensitive to

agricultural land-use intensity (*Alauda arvensis*, *Motacilla flava*, *Tyto alba*), and three generalist species (*Corvus corax*, *Hirundo rustica*, and *Phoenicurus phoenicurus*) (see S.I. for more details). For each species we retrieved all available occurrence points from the iNaturalist repository (iNaturalist.org 2020) and kept only those of the species that were validated by experts. For species resident in the study area we retained all occurrences collected during the breeding period; for migratory species we retained only locations collected during the breeding period and falling within the breeding extent of occurrence (data on breeding range from Maiorano et al. 2013). Information on the ecology and distribution of the species was obtained from the Birds of the World (Cornell Laboratory of Ornithology 2020).

We compared the ensemble models calibrated with the land system map to models with land cover maps. We hypothesized that the land system map would improve the model's predictive ability and indicate higher variable contribution (i.e., the relative contribution of the environmental variables to the predicting model) as compared to the use of solely land cover information, especially with species that have specific habitat requirements. We used two land cover maps as comparison: one is an integrated Copernicus Global Land Cover layers (Global Land Cover) (Buchhorn et al. 2019) that contains 10 land cover types (i.e., closed forest, open forest, shrubland, herbaceous vegetation, herbaceous wetland, moss & lichen, bare/sparse vegetation, cropland, built-up, snow & ice, permanent water bodies), and the other one is a map created through reclassifying our land system map to the seven dominant land cover classes (Land Cover EU) (i.e., water/ice, settlement, forest, cropland, grassland, shrubs, bare).

To calibrate all models, we also considered a set of bioclimatic variables. Among the 19 bioclimatic variables available in the Chelsa climate repository (Karger et al. 2017b, a), we selected six variables (i.e., bio2, 4, 8, 10, 15, 19, Table S6) that have low collinearity (Variance Inflation Factor test < 4). We ran the ensemble for every species using three sets of environmental variables respectively: (1) climate variables only, (2) land cover/system maps only (i.e., Global Land Cover, Land Cover EU, and Land

System EU), and (3) combined climate with each of the land cover/system maps. The three land cover/system maps were used as categorical data.

The ensemble modelling procedure was developed as follows. We combined five state-of-the-art statistical models: generalized linear models (GLM), generalized additive models (GAM), boosted regression trees (BRT), Random Forest (RF), and maximum entropy modeling (Maxent). Since these models required pseudo-absence (PA) data, we randomly drew 10,000 PA across the whole Europe. This procedure was repeated three times to account for the stochasticity of the PA generation. For each of these three datasets (presence-PA), we then generated three calibration-evaluation sub-datasets for cross-validation. The calibration data (a 70% random part) were used to calibrate the models, and the remaining 30% to evaluate them. Again, this procedure was repeated three times to account for the stochastic procedure. To summarize, for each of the five statistical models, nine models were run and evaluated (45 models in total for each single species).

Models' predictive ability were evaluated using the true skill statistic TSS, which measures model performance on presence-absence data and, unlike Kappa, is independent of prevalence (Allouche et al. 2006). The ensemble model was then made of all calibrated models with a TSS > 0.3. We further measured the TSS of the ensemble model on the evaluation data, and then used the ensemble to predict species' probability of occurrence across Europe (Marmion et al. 2009).

We measured the importance of the variables using a standard permutation procedure where each variable is randomly permuted before predictions (while the others are retained as they are). The difference between the original prediction and the one with the variable permuted gives a measure as the importance of the variable (i.e., Pearson correlation). The more different are the predictions, the more important is the variable. This was done for each species, for each variable and repeated three times.

Models and ensemble procedure were performed with the BIOMOD2 package in R (Thuiller 2003; Thuiller et al. 2009). See R scripts in Supplementary Materials.

Results

Current land systems

Figure 1 presents the spatial distribution of land systems across Europe, while Fig. 2 presents the proportion of the different land systems across the four main geographic regions in Europe. Additionally, we show particular land systems and regions in more detail (Fig. 3).

High-intensity settlements, conceptualized as urban centers, have an average imperviousness degree around 42%. The medium and low intensity settlement classes, which can be understood as peri-urban and villages, have an average imperviousness degree of 12% and 10% respectively, with the rest covered by cropland (37 and 36% respectively) and grassland (23 and 24% respectively). All three settlement classes cover 7.1% of the continent, which is higher than the estimation in other studies (e.g., 1.8% urban built-up by Levers et al. 2018). The peri-urban class is the dominant among three settlement classes in the Western and Southern Europe (Fig. 3A), while village landscapes cover the largest area among the three residential land system classes in Eastern Europe.

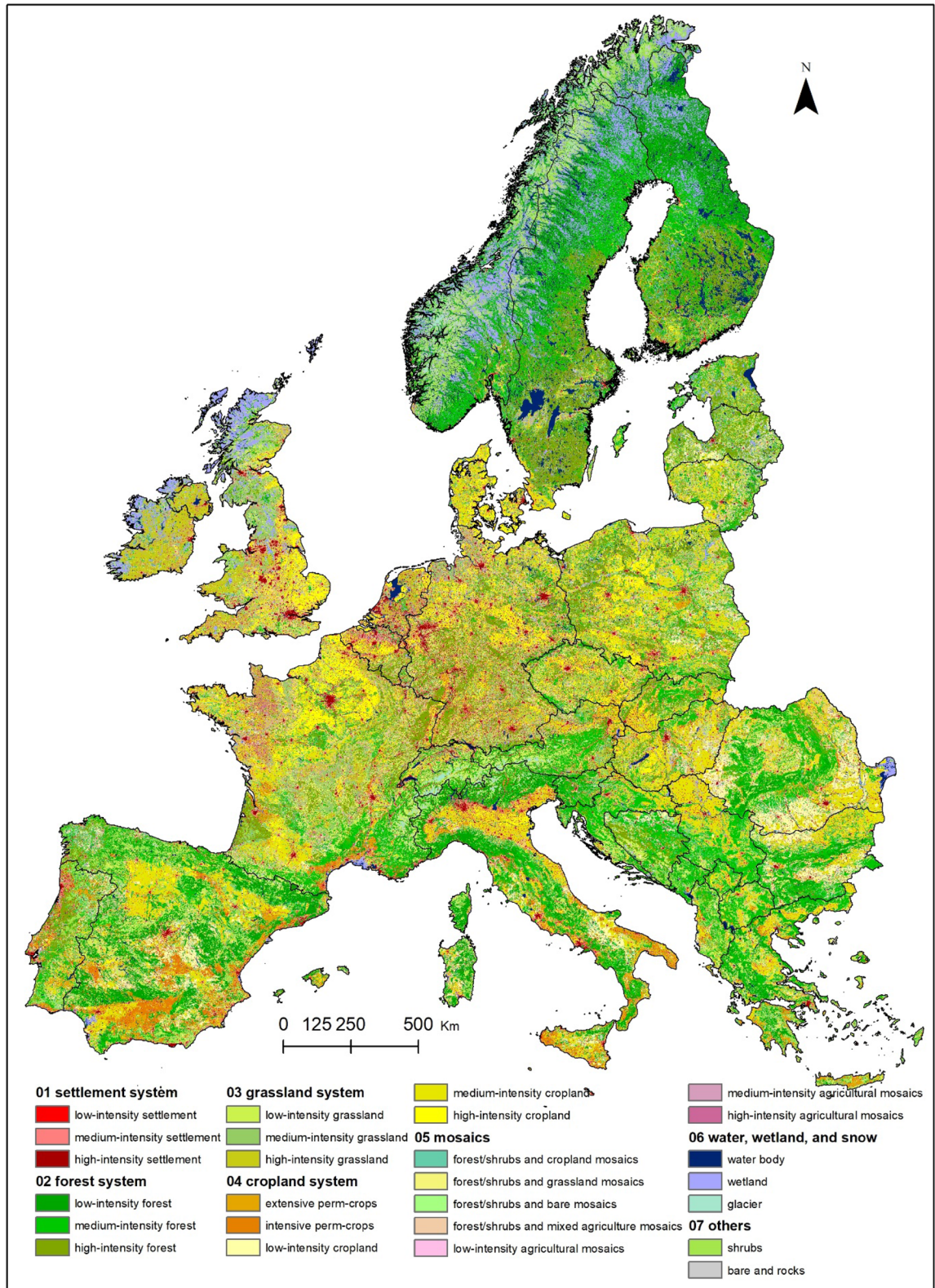
Forest systems are characterized by the high tree cover of over 70% often mixed with small areas of grassland and cropland. The high-intensity forest has an average annual wood production of 36.5 m³/km², and 15.2 m³/km² and 4.6 m³/km² for medium and low-intensity forest respectively. Forest systems are the largest land system in Europe with a total of 1.6 million km² area covering 32.3% land surface. Nonetheless, forests of low-intensity level are the smallest within the three intensity levels, accounting for 30.3% of the total forest classes and 9.8% of the total European land surface. The low-intensity forests are mostly located in the mountain areas of Europe, including the Alps, Pyrenees, the Carpathian Mountains, and in the Scandinavian Mountains. However, large areas of forests in Western Europe are used with high-intensity, particularly in Germany, France, and southern Sweden.

Grassland systems cover about 6.2% of the total European land surface, most of which are in Western Europe. Most high-intensity grassland areas are concentrated in the west and featured by different intensity indicators. For instance, in Ireland high-intensity grassland is characterized by high LSU density and

high mowing frequency, whereas the Netherlands has high LSU density and nitrogen application rates (Figs. 3B). In the large areas in central France this class is featured by different levels of nitrogen input but in general frequently mowed and with moderate and high density of livestock. Other grassland classes are scattered in Southern Europe and Eastern Europe, and little grassland in the Northern region.

The annual cropland classes are characterized by a high average of 84% cropland cover and some forest and grassland. The low and medium intensity levels of annual cropland classes have an average nitrogen input of 87 kg/ha and 157 kg/ha respectively. The average nitrogen input of the high-intensity class is as high as 338 kg/ha, almost four times the nitrogen value of low-intensity annual cropland. Cropland systems are the largest systems covering about a third of Europe, except the northern region. In Western Europe, only 1.1% area coverage is classified as low-intensity cropland, while medium and high-intensity cropland both cover more than 10%. Most croplands in Eastern Europe are low to medium-intensity featured by relatively lower nitrogen applications than the rest of Europe. In addition, the majority of extensive permanent crops are found in Southern Europe with an area of 75,968 km² while the majority of intensive permanent crops are also found in southern Spain and along the coastlines of Italy.

Mosaic systems are diverse systems characterized by a mixed low to medium coverage of cropland (6%–50%), grassland (10%–48%), and forest (6%–44%), without substantial built-up areas. Mosaic systems cover 14.5% of Europe. We distinguish two subsystems: mosaics with forest/shrub (11.0%) and agriculture mosaics (3.4%). The agriculture mosaics are mostly clustered in Western Europe and predominantly as high-intensity agriculture mosaics in Normandy and Brittany in west France (Fig. 3—left panel). In the east of Europe there is also some agriculture mosaics but mostly as low-intensity (Fig. 3D). The forest/shrub and grassland mosaics show a clear pattern along the main mountain ranges, such as the Alps (gaps in Fig. 3A), the Massif Central in central France, and the Balkan Mountains. In Southern Europe, there is only 1.3% of low-intensity agricultural mosaics and the rest of the mosaic land systems are forest/shrub mosaics with cropland (6.6%), grassland (3.3%), mixed agricultural land (1.3%), and bare land (0.4%). This is because of the



◀ **Fig. 1** Distribution of land systems in Europe

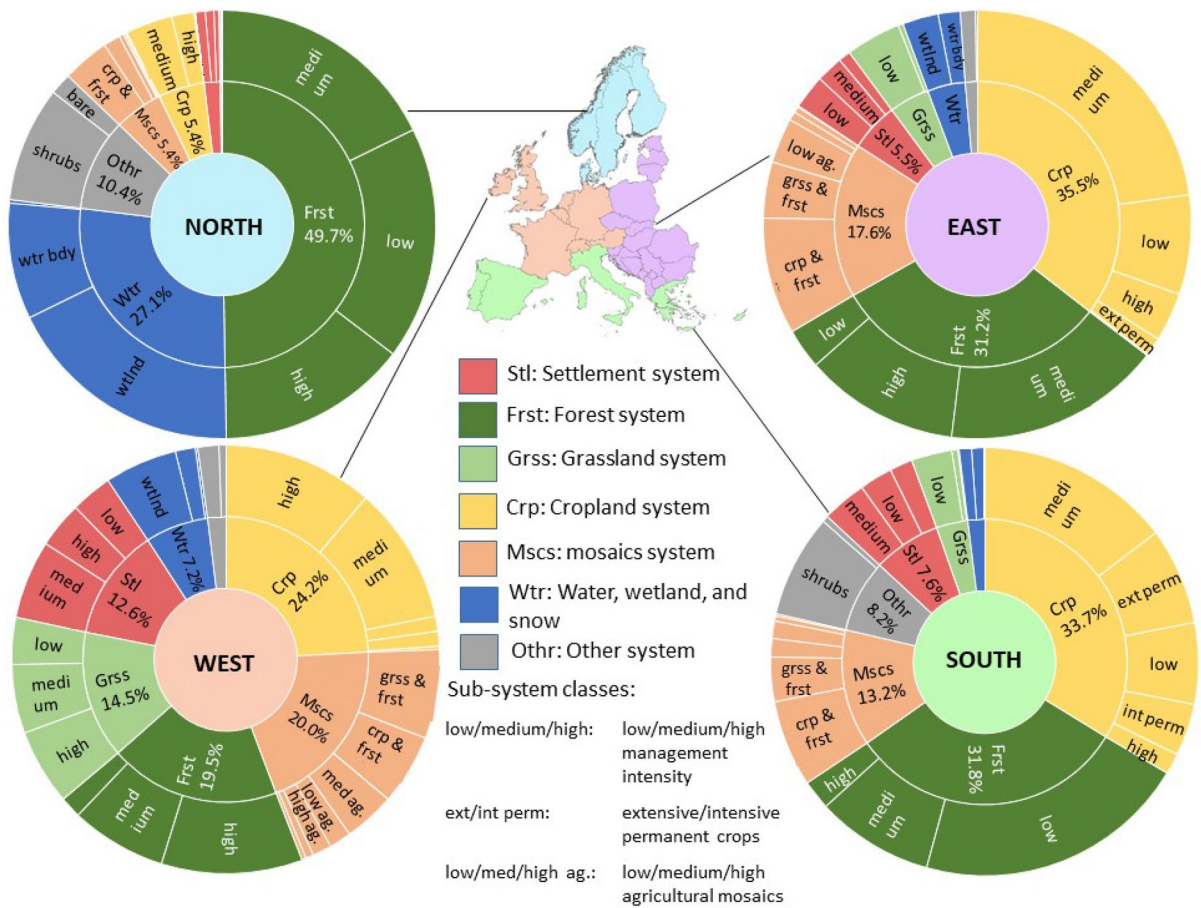


Fig. 2 Area division of land systems in different regions (north, west, east, and south) of Europe. The center of each circles indicates the region where the land systems are sum-

marized. The first circle (inner) indicates the area share of the main class, and the second (outer) circle indicates the area share of sub-system classes

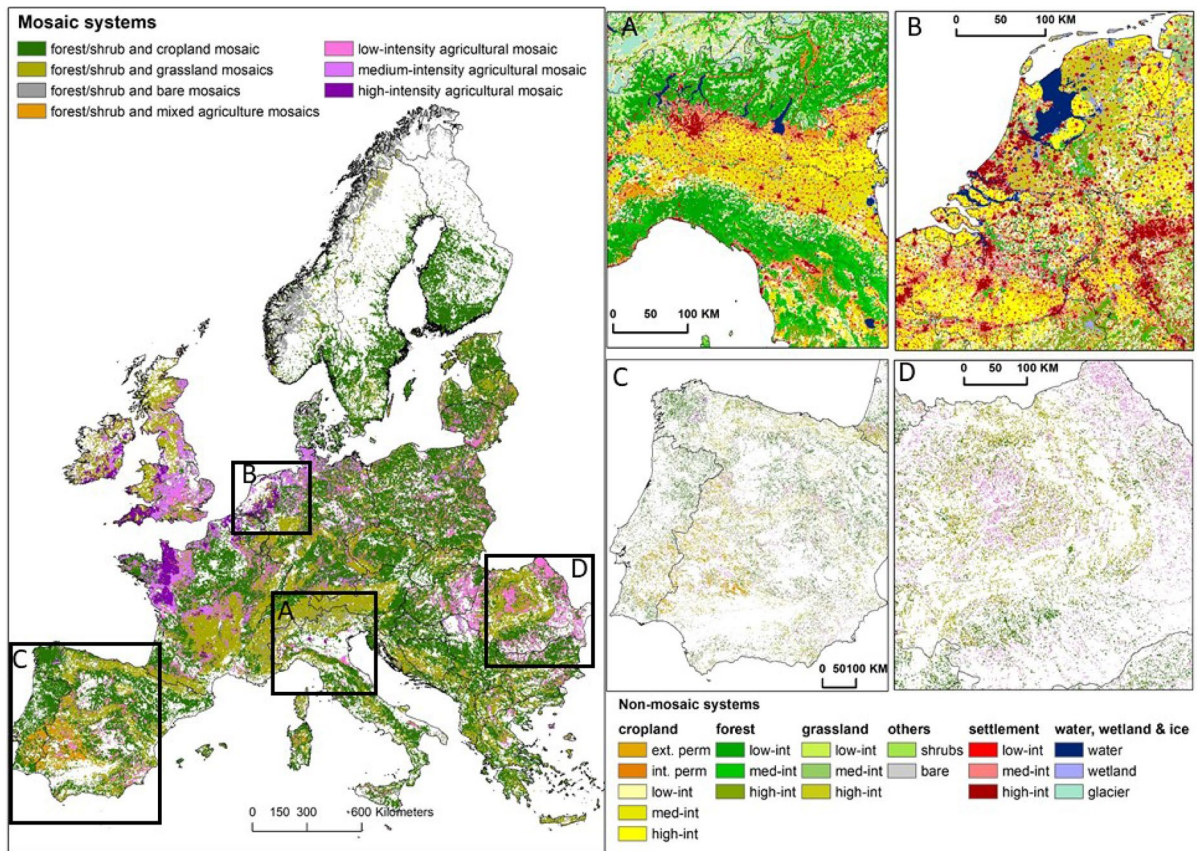


Fig. 3 Mosaic and non-mosaic land systems in Europe and sample regions. Left map shows mosaic land systems resampled to a 2-km resolution for visualization. Right panels: **A** and **B** show major land systems without mosaics, while **C** and **D** present mosaic systems without major land systems. **A** Linear clusters of peri-urban and urban core classes (medium and intensity settlement systems) in Po Valley, surrounded by

villages, high-intensity cropland and different intensity forest on the mountain; **B** Clusters of medium (peri-urban) and high (urban core) intensity settlement systems, surrounded by high-intensity grassland; **(C)** Forest/shrubs with mixed agriculture mosaics in Portugal and Spain. **(D)** Low-intensity agricultural mosaics in Romania with forest/shrub and cropland and grassland mosaics

common agroforestry landscape in Spain and Portugal, where forestry, grazing animals, and crop cultivation are found simultaneously in the same landscape (Fig. 3C).

Land system map contribution to species distribution modeling

Performance of species distribution models with climate and land input

Overall, the models with both climate variables and land cover/system maps have the highest predictive ability (Fig. 4), except for two species (i.e.,

Lophophanes cristatus and *Corvus corax*) of which the highest TSS appear in models with only climate variables. Models with the second highest TSS are calibrated with climate variables only and no land cover/system maps. Models with the lowest TSS appear to be using land cover/system maps only and no climate variables. Interestingly, climate variables are visibly dominant in these models, while the inclusion of land cover/system maps with climate variables only marginally improves TSS. However, for models without climate variables, the TSS when using the land system classification remains the highest. For five species, the land system map can improve the model's predictive ability up to a useful TSS (>0.3)

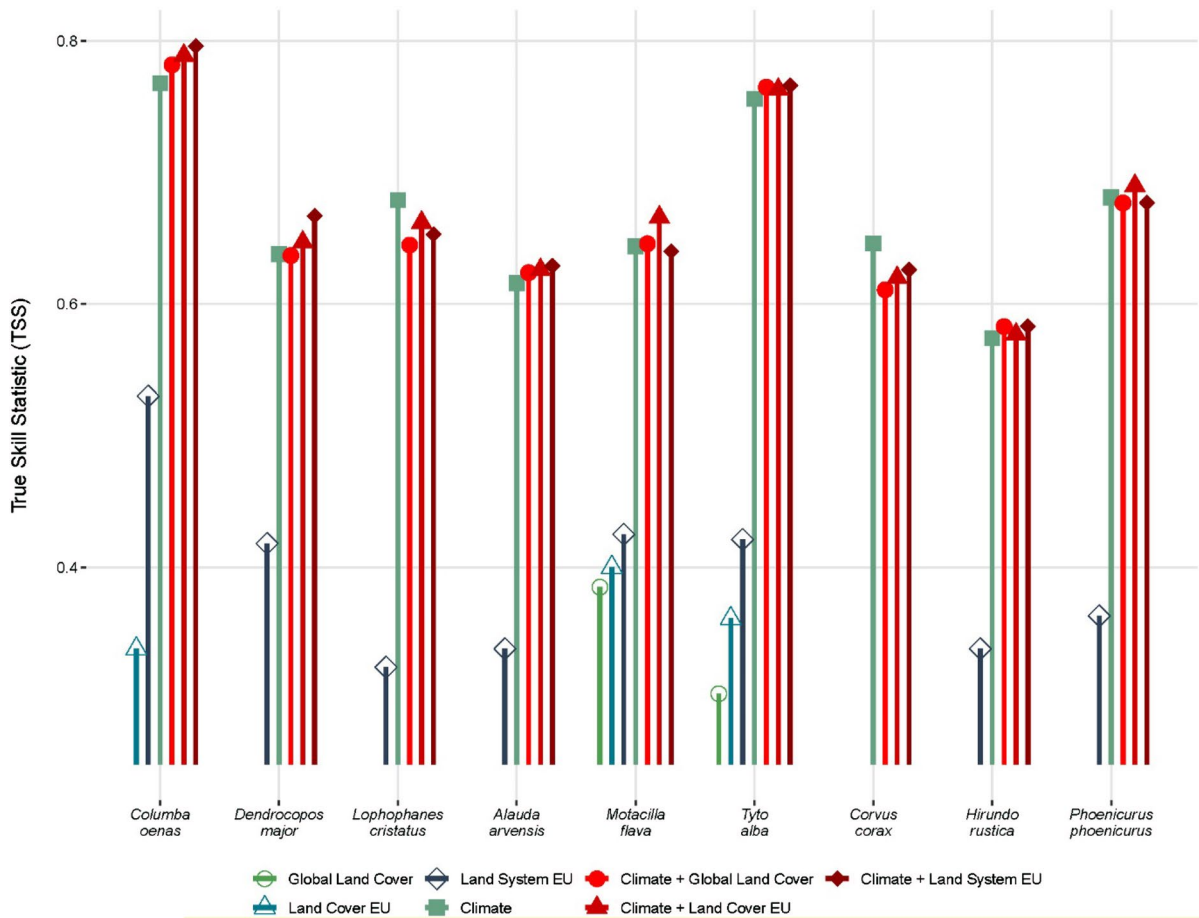


Fig. 4 True Skill Statistic (TSS) of selected bird species using ensemble of species distribution models calibrated with different environmental variables. Models with TSS < 0.3 are not reported in the figure. Species are ordered as: sensitive to forest management (*Columba oenas*, *Dendrocopos major*,

Lophophanes cristatus); sensitive to agricultural land-use intensity (*Alauda arvensis*, *Motacilla flava*, *Tyto alba*); and three generalist species (*Corvus corax*, *Hirundo rustica*, and *Phoenicurus phoenicurus*)

while models with land cover maps only generate poor TSS (< 0.3) hence not reported in the figure. For the remaining species, the gap in predictive ability between models calibrated with land system map and land cover maps can be as large as 50%, with TSS increasing from 0.34 to 0.53 (e.g., *Columba oenas*), and 38% from 0.30 to 0.42 (e.g., *Tyto alba*).

Species' sensitivity to climate and land maps

The variable contribution of different land cover/system maps (Fig. 5) shows a clear pattern. For almost all nine species, bio 4 (i.e., Temperature Seasonality)

is the most important variable. Its importance, however, is reduced when land cover/system maps are used in the model. The reduction of its importance has an average value of 17.9%, ranging from 6.1% in *Tyto alba* to 25.5% in *Motacilla flava* depending on species.

The land system map always has the largest contribution to the spatial distribution of modeled species among the three land cover/system maps. The difference of variable importance between land system map and land cover maps range from 4.9% to 21.6%. Despite the dominant explanatory role of climate variables, land system map sometimes can account

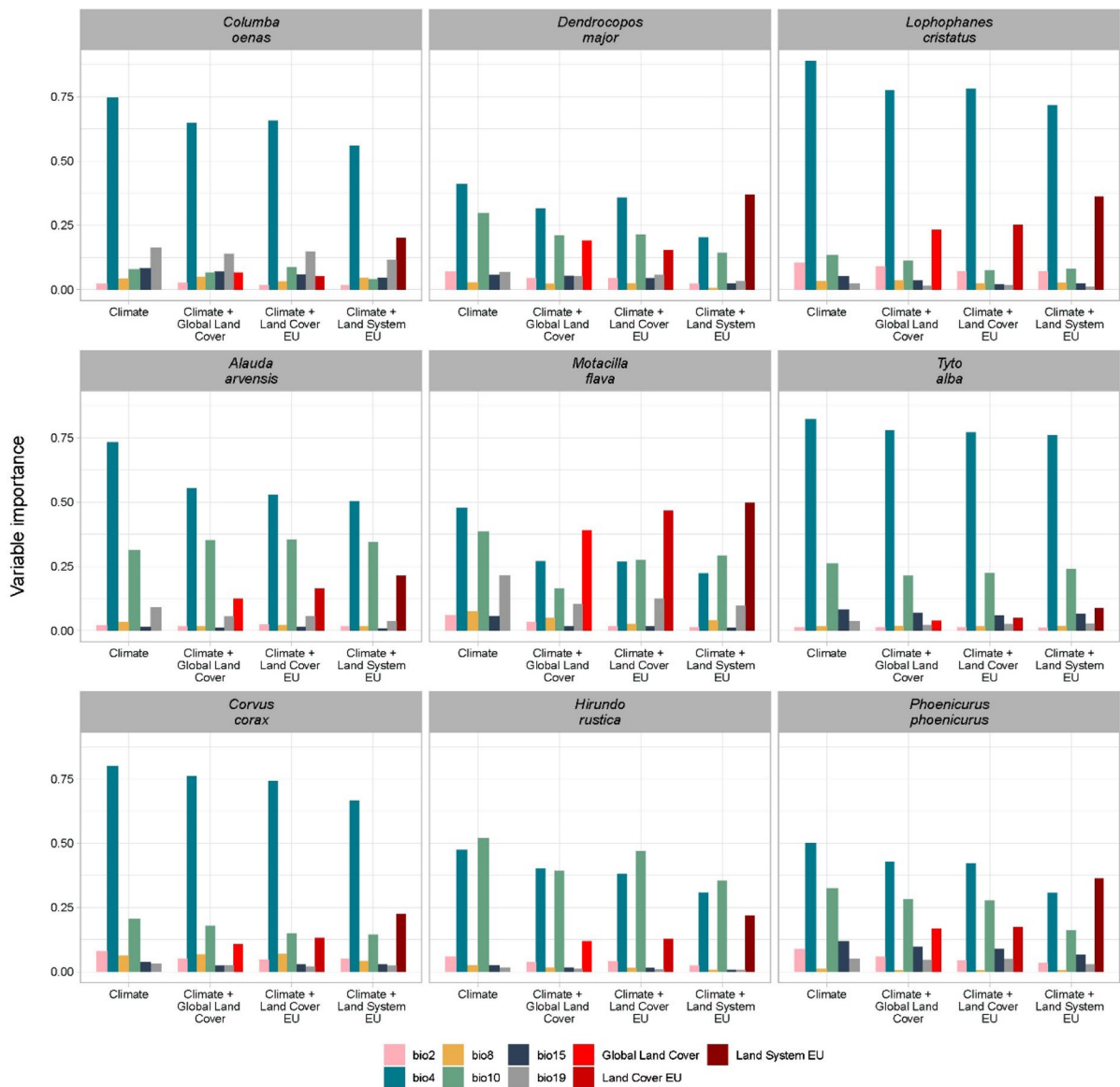


Fig. 5 Variable contribution to species distribution in models calibrated with climate variables and land cover/system maps. Models with only land cover/system maps are not reported in this figure

for more than 30% among all variables contributing to the spatial distribution, such as *Dendrocopos major*, *Phoenicurus phoenicurus*, and *Lophophanes cristatus*, and even 50% for *Motacilla flava* (Fig. 5). Particularly for species *Dendrocopos major* and *Motacilla flava*, land system map becomes the most important variables, even more so than any climate variables.

While for species sensitive to forest management (three species as group 1 in the first row in Fig. 5) and for generalist species (the last row in Fig. 5), the land system map always demonstrates noticeably higher contribution than the other two land cover maps. This is, however, less profound for the species that are sensitive to agricultural land-use intensity (indicated as the middle row in Fig. 5), particularly for *Tyto alba*

that only shows 5% more importance with land system map comparing to the global land cover map.

Discussion

Including landscape and land management in land use maps

In this study, we have shown a pragmatic approach to synthesize available data into a land systems classification that captures a number of aspects central to landscape ecology that are poorly represented in traditional land cover classifications: the land management intensity for grasslands, arable lands and forests; the importance of land cover mosaics that can be regarded as special land systems in which the functioning is dominated by the mosaics rather than by the individual land covers; and, the role of human disturbance through distinguishing settlement systems in which built-up land cover is far from dominant but human disturbance is playing a key role. We have shown that in an ensemble SDM exercise the land system maps consistently have added value as compared to using land cover classifications. At the same time, data availability at the large scale, the urge to keep the classification simple and close to well-known classification systems, limits the depth to which landscape structure and functional characteristics are included in our land system classification.

Beyond the landscape characteristics that are included in our map, there are many other aspects such as spatial extent of patches, heterogeneity, and connectivity that might be important to ecological function, not captured in our land system classification. The fragmentation of forest patches is one example that could be important for certain species. In the supplementary material we reported a spatial-context analysis of including fragmentation of forests in the classification. The results show that, to a limited degree, the inclusion of such a feature can further improve the predicting and explaining power of species distribution modeling (Table S2, Figure S1 and S2). Many landscape structure and pattern characteristics are largely linked to specific ecological processes. Therefore, instead of including multiple characteristics in a generic land system classification and

ending up with too many classes, land system classifications should be adapted to the specific purpose and include those landscape characteristics relevant to the ecological processes studied.

SDM results interpretation

The species distribution modeling results show a clear trend with the land system map consistently having added value as indicated by the TSS and useful information when compared to other land cover maps. This is particularly true when the model considers only land cover/use data and no climate information. The gain in model predictive ability by adding a land cover/system map to climate variables is limited, and land system map does not always contribute to the highest TSS. However, the land system map holds important sources of explanatory power compared to the other two land cover maps as indicated by the higher variable contribution to the models. The limited improvement of TSS by adding land information to climate variables may be explained by that the European-wide bird species distribution is largely determined by climate (Thuiller et al. 2004), and among which the most prominent one is the temperature seasonality (bio4).

Particularly problematic are the results for the species sensitive to agricultural intensities. Our results of both model performance and variable importance indicate the improvement is most limited in this group of species. This may be explained by a more nuanced sensitivity to land use intensity and management than is represented by our classes using common intensity level thresholds that, however, are not optimal for all species. On the other hand, the species tested here are bird species which actively move in the landscape. Species may still be present in those pixels that have low suitability caused by land use intensity but with suitable pixels nearby. Some species may have very specific habitat requirements so that the choice of species also matters. Since we only modeled nine species as an example of the application of the new land systems classification, no large inferences can and should be made based on these examples. The use of species presence data obtained from iNaturalist may also bring some uncertainty in the analysis due to the way in which points were reported and stored.

Comparison with other land cover or land system maps in Europe

Quantifying the intensity of human land use activities and integrating with land cover and land use data remain a challenge for land system scientists. Several efforts have improved the representation of the spatial pattern of human-environmental interactions, including the global representation from Ellis & Ramanakutty (2008) and van Asselen & Verburg (2012), the classification of agro-silvo-pastoral mosaic systems in Mediterranean region (Malek and Verburg 2017), grassland management (Estel et al. 2018) and the archetype maps for Europe (Levers et al. 2018). Each of these efforts selected sensible indicators and methods that operate at the corresponding scales and serve to the project purposes. For example, the classification of European archetypical patterns is based on 12 land cover and land use intensity indicators, including a previous version of nitrogen application rate data used in this study. However, rather than an expert-based classification an automated clustering technique (i.e., self-organising maps, SOMs) that calculates the similarities across indicators was performed. van der Zanden et al. (2016) have compared automated and expert-based classification methods and concluded that although large agreement between the two methods exists, sometimes the automated method may overlook small differences in certain categories that are vital for landscape function based on the experts' opinion. Furthermore, expert-based classification allows a consistent classification for present and future projections of the land system while upon change an automatic classification would also require an update of the classification itself as it is representing the statistical structure of the data. Although our map shares some characteristics with previous maps, it is the first time that a classification system was developed based on those landscape and land use management properties that are important to biodiversity assessment and species distribution modeling.

Robustness and uncertainties

It is challenging to assess the performance of any land system classification. First, the underlying data used for classification include inherent errors and uncertainties. For instance, large areas in the coastal areas of northern England and Ireland were classified

as peat bogs in CLC map, hence in our map they were aggregated into wetlands. Some of these areas may be used as pastures in reality and should be classified as grassland systems. Another example is the natural grassland class in CLC, some of which are used as grazing land in mountain areas during part of the year. Furthermore, uncertainty within the intensity indicators may be more pronounced because they are mostly downscaled from statistics or based on different proxies and assumptions. For instance, the nitrogen application rate we used in this study was based on CAPRI (Common Agricultural Policy Regionalised Impact) model result. CAPRI allocated nitrogen input in NUTS2 region to 1-km² cells based on environment conditions and crop types. The uncertainty from this downscaling work was therefore inherited in our land system map.

Second, the definition of land systems and land use intensity should be evaluated relative to its potential use. Therefore, a traditional accuracy-oriented validation practice will not make sense as a classification is anyhow simply a way to partition variation in a dataset rather than a novel dataset in itself.

In addition to the inclusion of indicators, there is little evidence revealing the (non-)linear relationships between different indicators and species richness. Therefore, some of our thresholds are arbitrary for the continuous variables. In some cases, we used top 25% quantile (e.g., wood production) that is statistically meaningful. In other cases, we used an arbitrary value (e.g., 50kgN/ha) as the threshold to keep consistent with previous studies. We conducted a series of sensitivity analysis on the measure of intensity of land systems. Doing so indicates to what extent the choice of threshold influences the land system classification outcomes, which in our case shows only marginal differences (results in Figs. S10, S11).

Conclusion

The new land system classification, with the most complete coverage of Europe at 1-km² resolution, resulted in 26 classes of seven major and mosaic land systems. In particular, the forest/shrub mosaic systems describe fragmented forest habitats that are crucial for species while the different land management intensity classes can show profoundly different impacts on biodiversity. The spatial distribution

of these classes shows distinctive patterns across Europe: vast low and medium intensity land systems in Eastern Europe, more developed and intensively used land in Western Europe, a more heterogeneous land systems in Southern Europe, and large areas of forest but mostly under medium-intensity in the north. Although designed for Europe, this practice can also be used as an example for other continental and global scale land system classifications that aim for biodiversity assessment or other purposes.

The representation of landscape characteristics in this new land system classification provides crucial information for biodiversity studies. Demonstrated by the species distribution modeling results, the predictive ability of models and variable contribution across different species using the land system map shows added value as compared to traditionally used land cover maps. Although we only analyzed a small set of species, the results presented in this study are promising, given evidence of the importance of counting landscape and land system characters when assessing biodiversity at large-scale. This way both land system science and landscape ecology can better take stock of their human-environmental systems approach in improving the way they represent landscape characteristics in further assessments.

Acknowledgements This research was funded through the 2017-2018 Belmont Forum and BiodivERsA joint call for research proposals, under the BiodivScen ERA-Net COFUND programme, and with the funding organisations The Dutch Research Council NWO (grant E10005) and Agence Nationale pour la Recherche (FutureWeb: ANR- 18-EBI4-0009) to W.T.. We thank Adrian Leip and Francesco Maria Sabatini for sharing their data, and people who made their data openly available online. We thank Tobias Kuemmerle for his insights in the preparation of this manuscript. We also thank colleagues from the Environmental Geography group at IVM for their support, and Maya Guéguen who ran the ensemble SDMs. In addition, we thank the two anonymous reviewers for their constructive comments that largely improved this manuscript from the earlier version. This paper contributes to the objectives of the Global Land Project. The land systems map from this paper can be downloaded from: Dataverse.nl (<https://doi.org/10.34894/XNC5KA>) and EG website (<https://www.environmentalgeography.nl/site/data-models/data/>).

Declaration

Conflict of interest The authors declare that they have no conflict of interest.

Open Access This article is licensed under a Creative Commons Attribution 4.0 International License, which permits use, sharing, adaptation, distribution and reproduction in any medium or format, as long as you give appropriate credit to the original author(s) and the source, provide a link to the Creative Commons licence, and indicate if changes were made. The images or other third party material in this article are included in the article's Creative Commons licence, unless indicated otherwise in a credit line to the material. If material is not included in the article's Creative Commons licence and your intended use is not permitted by statutory regulation or exceeds the permitted use, you will need to obtain permission directly from the copyright holder. To view a copy of this licence, visit <http://creativecommons.org/licenses/by/4.0/>.

References

- Allouche O, Tsoar A, Kadmon R (2006) Assessing the accuracy of species distribution models: Prevalence, kappa and the true skill statistic (TSS). *J Appl Ecol* 43:1223–1232
- Beckmann, M., Verburg PH, Gerstner K, Gurevitch J, Winter M, Fajjiye MA, Ceauşu S, Kambach S, Kinlock NL, Klotz S, Seppelt R, Newbold T (2019) Conventional land-use intensification reduces species richness and increases production: a global meta-analysis. *Glob Chang Biol* 25:1941–1956
- Boesing AL, Nichols E, Metzger JP (2017) Effects of landscape structure on avian-mediated insect pest control services: a review. *Landsc Ecol* 32:931–944
- Bruggisser OT, Schmidt-Entling MH, Bacher S (2010) Effects of vineyard management on biodiversity at three trophic levels. *Biol Conserv* 143:1521–1528
- Buchhorn M, Smets B, Bertels L, Lesiv M, Tsendbazar N-E, Herold M, Fritz S (2019) Copernicus global land service: land cover 100m: epoch 2015: globe. Dataset of the global component of the copernicus land monitoring service
- Buczowski G, Richmond DS (2012) The effect of urbanization on ant abundance and diversity: a temporal examination of factors affecting biodiversity. *PLoS ONE* 7:22–25
- Chaudhary A, Burivalova Z, Koh LP, Hellweg S (2016) Impact of forest management on species richness: global meta-analysis and economic trade-offs. *Sci Rep* 6:1–10
- Concepción ED, Obrist MK, Moretti M, Altermatt F, Baur B, Nobis MP (2016) Impacts of urban sprawl on species richness of plants, butterflies, gastropods and birds: not only built-up area matters. *Urban Ecosyst* 19:225–242
- Cornell Laboratory of Ornithology (2020) *Birds of the World*. Ithaca, NY
- Dainese M, Martin EA, Aizen MA, Albrecht M, Bartomeus I, Bommarco R, Carvalheiro LG, Chaplin-kramer R, Gagic V, Garibaldi LA, Ghazoul J, Grab H, Jonsson M, Karp DS, Letourneau DK, Marini L, Poveda K, Rader R, Smith HG, Takada MB, Taki H, Tamburini G, and Tschumi M (2019) A global synthesis reveals biodiversity-mediated benefits for crop production. *Sci Adv* 5:1–14

- Dearing JA, Braimoh AK, Reenberg A, Turner BL, van der Leeuw S (2010) Complex land systems: the need for long time perspectives to assess. *Ecol Soc* 15:21–39
- Debonne N, van Vliet J, Heinemann A, Verburg P (2018) Representing large-scale land acquisitions in land use change scenarios for the Lao PDR. *Reg Environ Chang* 18:1857–1869
- Demuzere M, Bechtel B, Middel A, Mills G (2019) Mapping Europe into local climate zones. *PLoS ONE* 14:1–2
- Di Minin E, Slotow R, Hunter LTB, Montesino Pouzols F, Toivonen T, Verburg PH, Leader-Williams N, Petracca L, Moilanen A (2016) Global priorities for national carnivore conservation under land use change. *Sci Rep* 6:1–9
- Diaz S, Settele J, Brondizio E, Ngo HT, Gueze M, Agard J, Arneth A, Balvanera P, Brauman K, Butchart S, Chan K, Garibaldi L, Ichii K, Liu J, Subramanian SM, Midgley G, Miloslavich P, Molnar Z, Obura D, Pfaff A, Polasky S, Purvis A, Razzaque J, Reyers B, Chowdhury RR, Shin YJ, Visseren-Hamakers I, Willis K, Zayas C (2019) Summary for policymakers of the global assessment report on biodiversity and ecosystem services
- Ellis EC, Ramankutty N (2008) Putting people in the map: Anthropogenic biomes of the world. *Front Ecol Environ* 6:439–447
- Erb K-H, Haberl H, Jepsen MR, Kuemmerle T, Lindner M, Müller D, Verburg PH, Reenberg A (2013) A conceptual framework for analysing and measuring land-use intensity. *Curr Opin Environ Sustain* 5:464–470
- Erb KH, Luysaert S, Meyfroidt P, Pongratz J, Don A, Kloster S, Kuemmerle T, Fetzel T, Fuchs R, Herold M, Haberl H, Jones CD, Marín-Spiotta E, McCallum I, Robertson E, Seufert V, Fritz S, Valade A, Wiltshire A, Dolman AJ (2017) Land management: data availability and process understanding for global change studies. *Glob Chang Biol* 23:512–533
- ESA, UCLouvain (2010) *GlobCover 2009*
- Estel S, Mader S, Levers C, Verburg PH, Baumann M, Kuemmerle T (2018) Combining satellite data and agricultural statistics to map grassland management intensity in Europe. *Environ Res Lett*. <https://doi.org/10.1088/1748-9326/aacc7a>
- European Environment Agency (2015a) High Resolution Layer: Imperviousness Density (IMD) 2015--copernicus land monitoring services
- European Environment Agency (2015b) High Resolution Layer: Forest Type (FTY) 2015--copernicus land monitoring services
- European Environment Agency (2015c) High Resolution Layer: Grassland (GRA) 2015--copernicus land monitoring services
- European Environment Agency (2015d) High Resolution Layer: Water and Wetness 2015--copernicus land monitoring services
- European Environment Agency (2018) *CORINE land cover 2018--copernicus land monitoring services*
- Eurostat (2013) Glossary: Livestock unit (LSU). [https://ec.europa.eu/eurostat/statistics-explained/index.php?title=Glossary:Livestock_unit_\(LSU\)](https://ec.europa.eu/eurostat/statistics-explained/index.php?title=Glossary:Livestock_unit_(LSU)). Accessed 26 Feb 2020
- Eurostat (2018) *LUCAS micro data 2018*
- García-Navas V, Thuiller W (2020) Farmland bird assemblages exhibit higher functional and phylogenetic diversity than forest assemblages in France. *J Biogeogr* 47:2392–2404
- Gilbert M, Nicolas G, Cinardi G, Van Boeckel TP, Vanwambeke SO, Wint GRW, Robinson TP (2018) Global distribution data for cattle, buffaloes, horses, sheep, goats, pigs, chickens and ducks in 2010. *Sci Data* 5:1–11
- Global Land Ice Measurements from Space (GLIMS), National Snow and Ice Data Center (2012) *GLIMS Glacier Database*
- Guisan A, Thuiller W, Zimmermann NE (2017) *Habitat suitability and distribution models with applications in R (ecology, biodiversity and conservation)*. Cambridge University Press, Cambridge
- Harvey CA, Komar O, Chazdon R, Ferguson BG, Finegan B, Griffith DM, Martínez-Ramos M, Morales H, Nigh R, Soto-Pinto L, Van Breugel M, Wishnie M (2008) Integrating agricultural landscapes with biodiversity conservation in the Mesoamerican hotspot. *Conserv Biol* 22:8–15
- Herrero M, Thornton PK, Bernués A, Baltenweck I, Vervoort J, van de Steeg J, Makokha S, van Wijk MT, Karanja S, Rufino MC, Staal SJ (2014) Exploring future changes in smallholder farming systems by linking socio-economic scenarios with regional and household models. *Glob Environ Chang* 24:165–182
- Horák J, Brestovanská T, Mladenović S, Kout J, Bogusch P, Halda JP, Zasadil P (2019) Green desert?: Biodiversity patterns in forest plantations. *For Ecol Manage* 433:343–348
- iNaturalist.org (2020) *iNaturalist.org*
- Karger DN, Conrad O, Böhner J, Kawohl T, Kreft H, Soria-Auza R W, Zimmermann NE, Linder HP, Kessler M (2017a) Data from: Climatologies at high resolution for the earth's land surface areas. *Dryad Digit. Repos*
- Karger DN, Conrad O, Böhner J, Kawohl T, Kreft H, Soria-Auza R W, Zimmermann NE, Linder HP, Kessler M (2017) Climatologies at high resolution for the earth's land surface areas. *Sci Data* 4:1–20
- Kikas T, Bunce RGH, Kull A, Sepp K (2018) New high nature value map of Estonian agricultural land: application of an expert system to integrate biodiversity, landscape and land use management indicators. *Ecol Indic* 94:87–98
- Kleijn D, Kohler F, Baldi A, Batary P, Concepcion E, Clough Y, Diaz M, Gabriel D, Holzschuh A, Knop E, Kovacs A, Marshall EJ, Tschirntke T, Verhulst J (2009) On the relationship between farmland biodiversity and land-use intensity in Europe. *Proc R Soc B* 276:903–909
- Kuemmerle T, Erb K, Meyfroidt P, Müller D, Verburg PH, Estel S, Haberl H, Hostert P, Jepsen MR, Kastner T, Levers C, Lindner M, Plutzer C, Verkerk PJ, van der Zanden EH, Reenberg A (2013) Challenges and opportunities in mapping land use intensity globally. *Curr Opin Environ Sustain* 5:484–493
- Lambin EF, Turner BL, Geist HJ, Agbola SB, Angelsen A, Bruce JW, Coomes OT, Dirzo R, Fischer G, Folke C, George PS, Homewood K, Imbernon J, Leemans R, Li X, Moran EF, Mortimore M, Ramakrishnan PS, Richards JF, Skånes H, Steffen W, Stone GD, Svedin U, Veldkamp TA, Vogel C, Xu J (2001) The causes of land-use and land-cover change: moving beyond the myths. *Glob Environ Chang* 11:261–269

- Lesiv M, Laso Bayas JC, See L, Duerauer M, Dahlia D, Durando N, Hazarika R, Kumar Sahariah P, Vakolyuk M, Blyshchuk V, Bilous A, Perez-Hoyos A, Gengler S, Prestele R, Bilous S, Akhtar I, Singha K, Choudhury SB, Chetri T, Malek Ž, Bungnamei K, Saikia A, Sahariah D, Narzary W, Danylo O, Sturn T, Karner M, McCallum I, Schepaschenko D, Moltchanova E, Fraisl D, Moorthy I, Fritz S (2019) Estimating the global distribution of field size using crowdsourcing. *Glob Chang Biol* 25:174–186
- Levers C, Müller D, Erb K, Haberl H, Jepsen MR, Metzger MJ, Meyfroidt P, Plieninger T, Plutzer C, Stürck J, Verburg PH, Verkerk PJ, Kuemmerle T (2018) Archetypical patterns and trajectories of land systems in Europe. *Reg Environ Chang* 18:715–732
- Li H, Wu J (2004) Use and misuse of landscape indices. *Landsc Ecol* 19:389–399
- Li C, Connor T, Bai W, Yang H, Zhang J, Qi D, Zhou C (2019) Dynamics of the giant panda habitat suitability in response to changing anthropogenic disturbance in the Liangshan Mountains. *Biol Conserv* 237:445–455
- Linard C, Gilbert M, Snow RW, Noor AM, Tatem AJ (2012) Population distribution, settlement patterns and accessibility across Africa in 2010. *PLoS ONE*. <https://doi.org/10.1371/journal.pone.0031743>
- Maiorano L, Amori G, Capula M, Falcucci A, Masi M, Montemaggiore A, Pottier J, Psomas A, Rondinini C, Russo D, Zimmermann NE, Boitani L, Guisan A (2013) Threats from climate change to terrestrial vertebrate hotspots in Europe. *PLoS ONE* 8:1–14
- Malek Ž, Verburg P (2017) Mediterranean land systems: Representing diversity and intensity of complex land systems in a dynamic region. *Landsc Urban Plan* 165:102–116
- Malkinson D, Kopel D, Wittenberg L (2018) From rural-urban gradients to patch—matrix frameworks: plant diversity patterns in urban landscapes. *Landsc Urban Plan* 169:260–268
- Manson SM (2007) Challenges in evaluating models of geographic complexity. *Environ Plan B* 34:245–260
- Marmion M, Parviainen M, Luoto M, Heikkinen RK, Thuiller W (2009) Evaluation of consensus methods in predictive species distribution modelling. *Divers Distrib* 15:59–69
- Mueller ND, Gerber JS, Johnston M, Ray DK, Ramankutty N, Foley JA (2012) Closing yield gaps through nutrient and water management. *Nature* 490:254–257
- Nagendra H, Munroe DK, Southworth J (2004) From pattern to process: landscape fragmentation and the analysis of land use/land cover change. *Agric Ecosyst Environ* 101:111–115
- Newbold T (2018) Future effects of climate and land-use change on terrestrial vertebrate community diversity under different scenarios. *Proc R Soc B* 285:20180792
- Nielsen J, de Bremond A, Roy Chowdhury R, Friis C, Metternicht G, Meyfroidt P, Munroe D, Pascual U, Thomson A (2019) Toward a normative land systems science. *Curr Opin Environ Sustain* 38:1–6
- O’Neill RV, Krummel JR, Gardner RH, Sugihara G, Jackson B, DeAngelis DL, Milne BT, Turner MG, Zygmunt B, Christensen SW, Dale VH, Graham RL (1988) Indices of landscape pattern. *Landsc Ecol* 1:153–162
- Opdam P, Luque S, Nassauer J, Verburg PH, Wu J (2018) How can landscape ecology contribute to sustainability science? *Landsc Ecol* 33:1–7
- Ornetsmüller C, Heinimann A, Verburg PH (2018) Operationalizing a land systems classification for Laos. *Landsc Urban Plan* 169:229–240
- Overmars KP, Verburg PH (2006) Multilevel modelling of land use from field to village level in the Philippines. *Agric Syst* 89:435–456
- Perring MP, Ellis EC (2013) The extent of novel ecosystems: long in time and broad in space. In: Hobbs RJ, Higgs ES, M.Hall C (eds) *Novel ecosystems: intervening in the new ecological world order*, 1st edn. Wiley-Blackwell, Chichester, pp 66–80
- Pouzols FM, Toivonen T, Di ME, Kukkala AS, Kullberg P, Kuustera J, Lehtomaki J, Tenkanen H, Verburg PH, Moilanen A (2014) Global protected area expansion is compromised by projected land-use and parochialism. *Nature* 516:383–386
- Powers RP, Jetz W (2019) Global habitat loss and extinction risk of terrestrial vertebrates under future land-use-change scenarios. *Nat Clim Chang* 9:323–329
- Randin CF, Ashcroft MB, Bolliger J, Cavender-Bares J, Coops NC, Dullinger S, Dirnböck T, Eckert S, Ellis E, Fernández N, Giuliani G, Guisan A, Jetz W, Joost S, Karger D, Lembrechts J, Lenoir J, Luoto M, Morin X, Price B, Rocchini D, Schaepman M, Schmid B, Verburg PH, Wilson A, Woodcock P, Yoccoz N, Payne D (2020) Monitoring biodiversity in the Anthropocene using remote sensing in species distribution models. *Remote Sens Environ* 239:111626
- Roy Chowdhury R, Turner BL (2019) The parallel trajectories and increasing integration of landscape ecology and land system science. *J Land Use Sci* 14:135–154
- Sabatini FM, Burrascano S, Keeton WS, Levers C, Lindner M, Pötzschner F, Verkerk PJ, Bauhus J, Buchwald E, Chaskovsky O, Debaive N, Horváth F, Garbarino M, Grigoriadis N, Lombardi F, Marques Duarte I, Meyer P, Midteng R, Mikac S, Mikoláš M, Motta R, Mozgeris G, Nunes L, Panayotov M, Ódor P, Ruete A, Simovski B, Stillhard J, Svoboda M, Szwagrzyk J, Tikkanen OP, Volosyanchuk R, Vrska T, Zlatanov T, Kuemmerle T (2018) Where are Europe’s last primary forests? *Divers Distrib* 24:1426–1439
- Schipper AM, Hilbers JP, Meijer JR, Antão LH, Benítez-López A, de Jonge MMJ, Leemans LH, Scheper E, Alkemade R, Doelman JC, Mylius S, Stehfest E, van Vuuren DP, van Zeist WJ, Huijbregts MAJ (2020) Projecting terrestrial biodiversity intactness with GLOBIO 4. *Glob Chang Biol* 26:760–771
- Schulze K, Malek Ž, Verburg PH (2020) The impact of accounting for future wood production in global vertebrate biodiversity assessments. *Environ Manage*. <https://doi.org/10.1007/s00267-020-01322-4>
- Schulze K, Malek Ž, Verburg PH (2019) Towards better mapping of forest management patterns: a global allocation approach. *For Ecol Manag* 432:776–785

- Seto KC, Güneralp B, Hutyra LR (2012) Global forecasts of urban expansion to 2030 and direct impacts on biodiversity and carbon pools. *Proc Natl Acad Sci USA* 109:16083–16088
- Shaw BJ, Van VJ, Verburg PH (2020) The peri-urbanization of Europe: a systematic review of a multifaceted process. *Landsc Urban Plan* 196:103733
- Stürck J, Levers C, van der Zanden EH, Schulp CJE, Verkerk PJ, Kuemmerle T, Helming J, Lotze-Campen H, Tabeau A, Popp A, Schrammeijer E, Verburg P (2018) Simulating and delineating future land change trajectories across Europe. *Reg Environ Chang* 18:733–749
- Thuiller W (2003) BIOMOD-optimizing predictions of species distributions and projecting potential future shifts under global change. *Glob Chang Biol* 9:1353–1362
- Thuiller W, Araújo MB, Lavorel S (2004) Do we need land-cover data to model species distributions in Europe? *J Biogeogr* 31:353–361
- Thuiller W, Lafourcade B, Engler R, Araújo MB (2009) BIOMOD—a platform for ensemble forecasting of species distributions. *Ecography (Cop)* 32:369–373
- Thuiller W, Pironon S, Psomas A, Barbet-Massin M, Jiguet F, Lavergne S, Pearman PB, Renaud J, Zupan L, Zimmermann NE (2014) The European functional tree of bird life in the face of global change. *Nat Commun*. <https://doi.org/10.1038/ncomms4118>
- Thuiller W, Guéguen M, Renaud J, Karger DN, Zimmermann NE (2019) Uncertainty in ensembles of global biodiversity scenarios. *Nat Commun* 10:1–9
- Tieskens KF, Schulp CJE, Levers C, Lieskovský J, Kuemmerle T, Plieninger T, Verburg PH (2017) Characterizing European cultural landscapes: accounting for structure, management intensity and value of agricultural and forest landscapes. *Land use policy* 62:29–39
- Titeux N, Henle K, Mihoub JB, Regos A, Geijzendorffer IR, Cramer W, Verburg PH, Brotons L (2016) Biodiversity scenarios neglect future land-use changes. *Glob Chang Biol* 22:2505–2515
- Turner BL II, Lambin EF, Reenberg A (2007) The emergence of land change science for global environmental change and sustainability. *Proc Natl Acad Sci USA* 104:20666–20672
- Václavík T, Lautenbach S, Kuemmerle T, Seppelt R (2013) Mapping global land system archetypes. *Glob Environ Chang* 23:1637–1647
- van Asselen S, Verburg PH (2012) A land system representation for global assessments and land-use modeling. *Glob Chang Biol* 18:3125–3148
- van der Zanden EH, Levers C, Verburg PH, Kuemmerle T (2016) Representing composition, spatial structure and management intensity of European agricultural landscapes: a new typology. *Landsc Urban Plan* 150:36–49
- van Vliet J, Verburg PH, Grădinaru SR, Hersperger AM (2019) Beyond the urban-rural dichotomy: towards a more nuanced analysis of changes in built-up land. *Comput Environ Urban Syst* 74:41–49
- Veldkamp A, Lambin EF (2001) Predicting land-use change. *Agric Ecosyst Environ* 85:1–6
- Verburg PH, Crossman N, Ellis EC, Heinemann A, Hostert P, Mertz O, Nagendra H, Sikor T, Erb KH, Golubiewski N, Grau R, Grove M, Konaté S, Meyfroidt P, Parker DC, Chowdhury RR, Shibata H, Thomson A, Zhen L (2015) Land system science and sustainable development of the earth system: a global land project perspective. *Anthropocene* 12:29–41
- Verburg PH, Erb KH, Mertz O, Espindola G (2013) Land system science: between global challenges and local realities. *Curr Opin Environ Sustain* 5:433–437
- Verburg PH, van Asselen S, van der Zanden EH, Stehfest E (2013) The representation of landscapes in global scale assessments of environmental change. *Landsc Ecol* 28:1067–1080
- Verkerk PJ, Levers C, Kuemmerle T, Lindner M, Valbuena R, Verburg PH, Zudin S (2015) Mapping wood production in European forests. *For Ecol Manag* 357:228–238
- Walz U, Syrbe RU (2013) Linking landscape structure and biodiversity. *Ecol Indic* 31:1–5
- West PC, Gerber JS, Engstrom PM, Mueller ND, Brauman KA, Carlson KM, Cassidy ES, Johnston M, Macdonald GK, Ray DK, Siebert S (2014) Leverage points for improving global food security and the environment. *Science (80-)* 345:325–328
- Winter S, Bauer T, Strauss P, Kratschmer S, Paredes D, Popescu D, Landa B, Guzmán G, Gómez JA, Guernion M, Zaller JG, Batáry P (2018) Effects of vegetation management intensity on biodiversity and ecosystem services in vineyards: a meta-analysis. *J Appl Ecol* 55:2484–2495
- Wu J (2004) Effects of changing scale on landscape pattern analysis: Scaling relations. *Landsc Ecol* 19:125–138
- Wu J (2013) Landscape sustainability science: Ecosystem services and human well-being in changing landscapes. *Landsc Ecol* 28:999–1023
- Zhang J, Hull V, Ouyang Z, Li R, Connor T, Yang H, Zhang Z, Silet B, Zhang H, Liu J (2017) Divergent responses of sympatric species to livestock encroachment at fine spatiotemporal scales. *Biol Conserv* 209:119–129

Publisher's Note Springer Nature remains neutral with regard to jurisdictional claims in published maps and institutional affiliations.