



HAL
open science

Towards carbon neutrality by 2040 in La Rochelle metropolitan area (France): quantifying the role of wetlands and littoral zone in the capture and sequestration of blue carbon

Christine Dupuy, H el ene Agogu e, Benjamin Amann, Fr ed eric Az emar, Nicolas Becu, Lauriane Bergeon, Xavier Bertin, Pierrick Bocher, Emilie Bout, Isabelle Brenon, et al.

► To cite this version:

Christine Dupuy, H el ene Agogu e, Benjamin Amann, Fr ed eric Az emar, Nicolas Becu, et al.. Towards carbon neutrality by 2040 in La Rochelle metropolitan area (France): quantifying the role of wetlands and littoral zone in the capture and sequestration of blue carbon. ECSA 59 Using the best scientific knowledge for the sustainable management of estuaries and coastal seas, Sep 2022, San Sebastian, Spain. , 2022. hal-03777579

HAL Id: hal-03777579

<https://cnrs.hal.science/hal-03777579>

Submitted on 14 Sep 2022

HAL is a multi-disciplinary open access archive for the deposit and dissemination of scientific research documents, whether they are published or not. The documents may come from teaching and research institutions in France or abroad, or from public or private research centers.

L'archive ouverte pluridisciplinaire **HAL**, est destin ee au d ep ot et  a la diffusion de documents scientifiques de niveau recherche, publi es ou non,  emanant des  tablissements d'enseignement et de recherche fran ais ou  trangers, des laboratoires publics ou priv es.



Distributed under a Creative Commons Attribution 4.0 International License

Towards carbon neutrality by 2040 in La Rochelle metropolitan area (France): quantifying the role of wetlands and littoral zone in the capture and sequestration of blue carbon

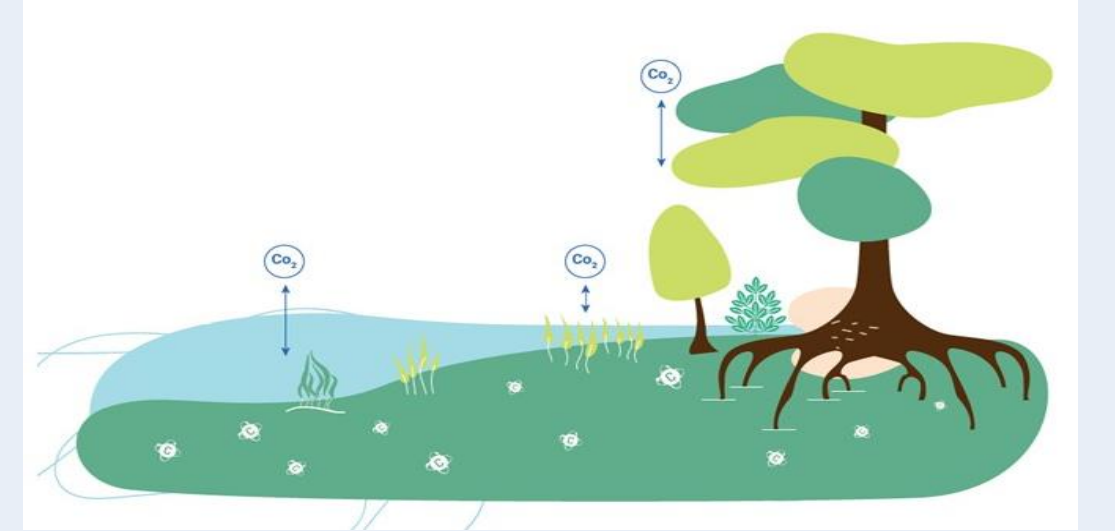
Consortium of LRTZC (La Rochelle Territoire Zéro Carbon) project:

Dupuy C., Agogue H., Amann B., Azémar F., Becu N., Bergeon L., Bertin X., Bocher P., Bout E., Brenon I., Carpentier A., Ceaux S., Chaumillon E., Choquet C., Colin B., Deborde J., Dubillot E., Emery C., Ferrari S., Gauchere C., Geairon P., Gilbert S., Jeannin M., Jourde J., Kalenitchenko D., Lachaussée N., Lacoue-Labarthe T., Lanneluc I., Lavaud L., Lavaud S., Lefrançois C., Le Fouest V., Long N., Mahieux P.Y., Mayen J., Marais C., Metzger E., Moncelon R., Ouisse V., Péreau J.C., Pétilon J., Philippine O., Pineau P., Pignon-Mussaad C., Polsenaeere P., Sabot R., Refait P., Reveillac E., Robin F.X., Rouquette H., Sable S., Sauriau P.-G., Tackx M., Turcy P., Vagner M., Vincent J., Volto N.

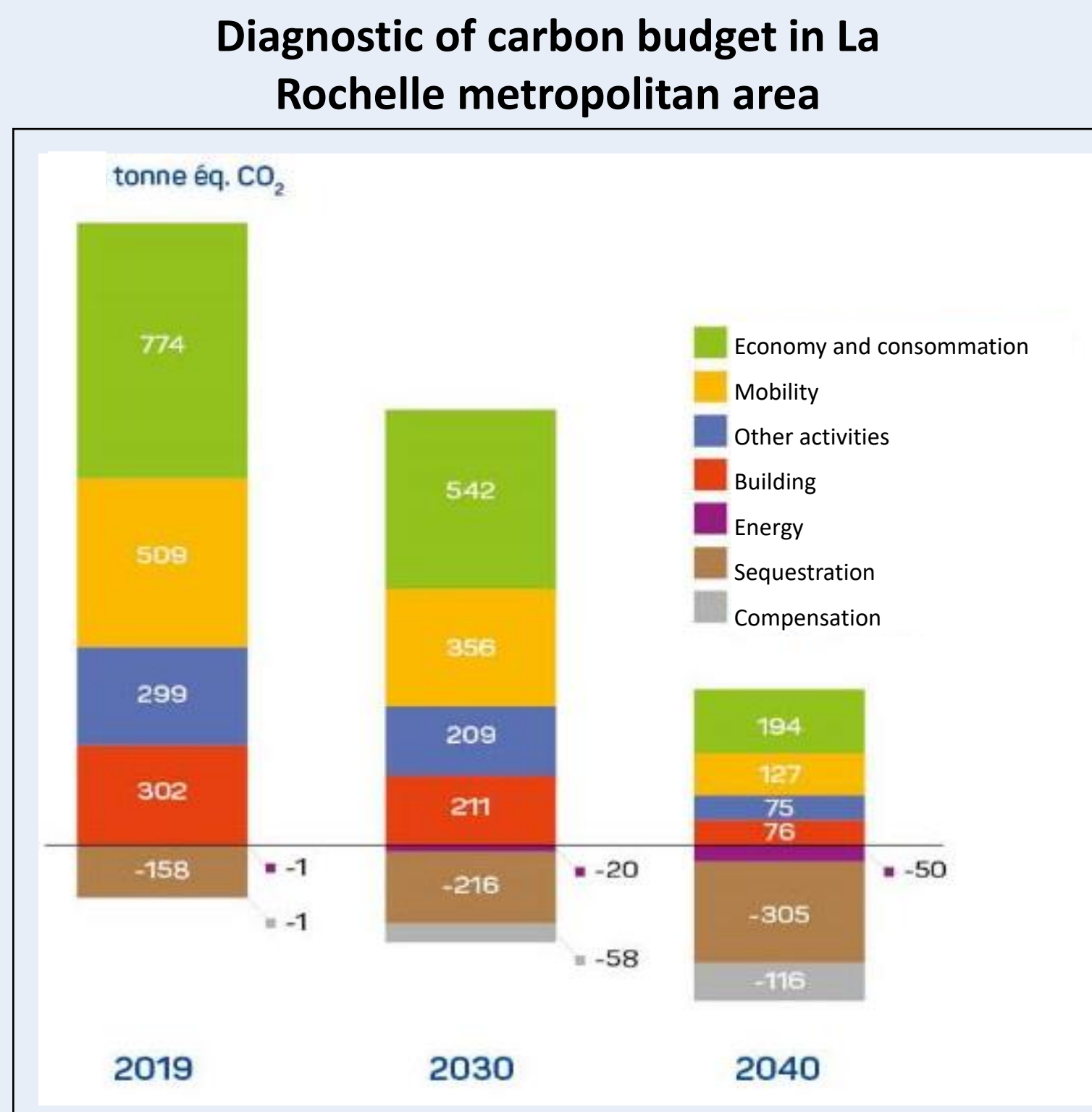
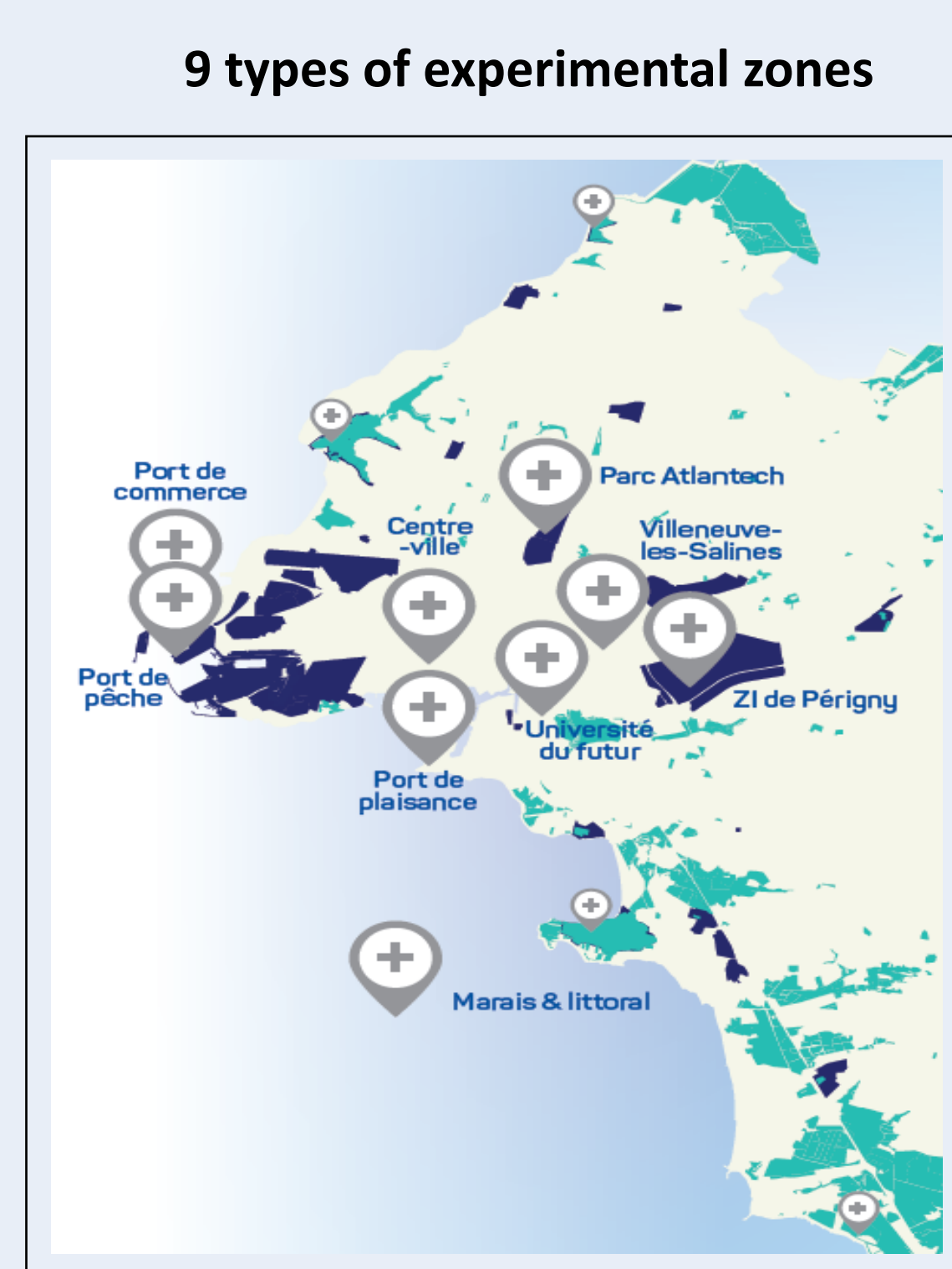
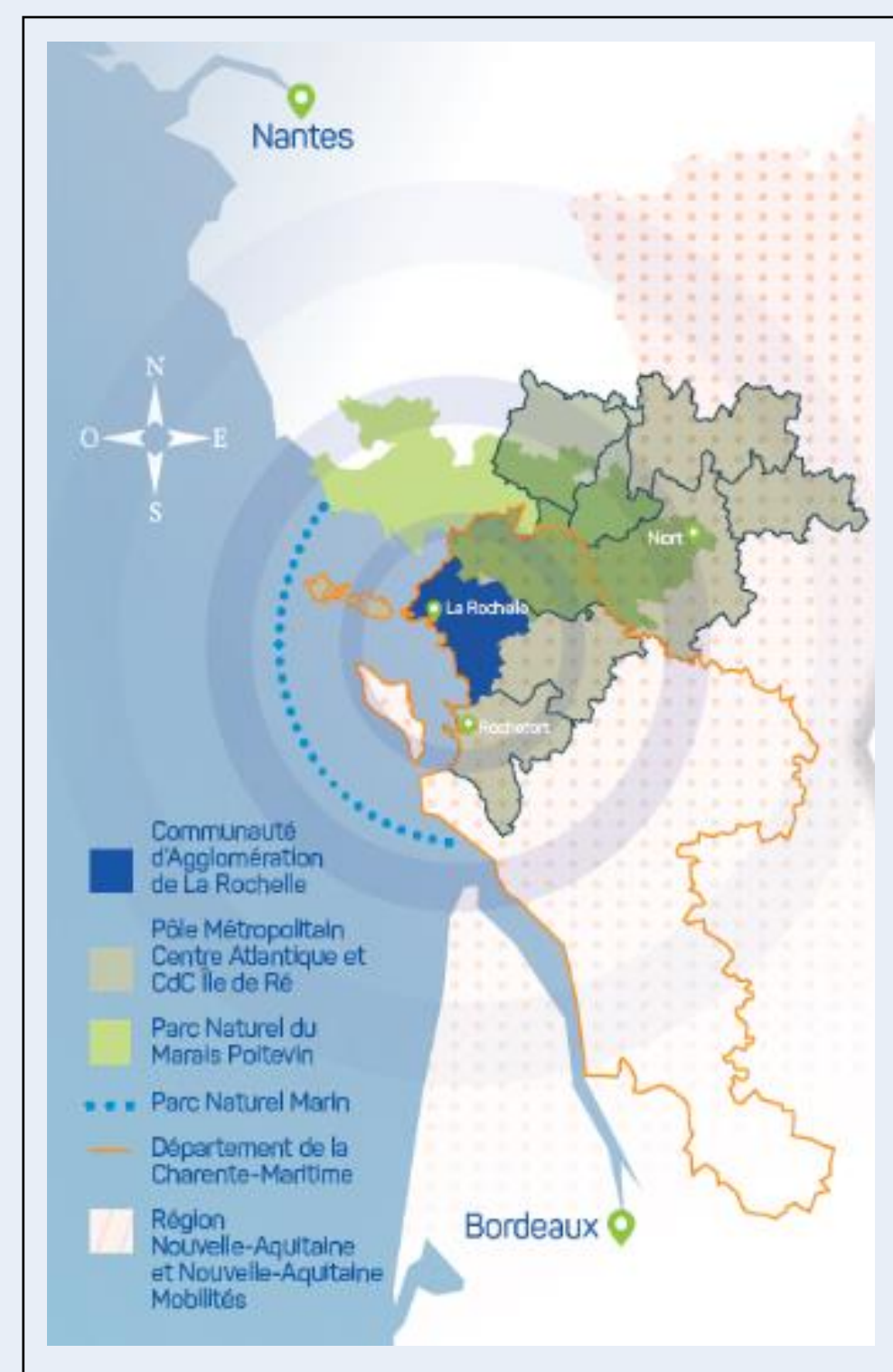
1 UMR 7266 Littoral Environnement et Sociétés (LIENSs), CNRS - La Rochelle University, France, 2 UMR 5245 (CNRS-UPS-INPT), Laboratoire Ecologie Fonctionnelle et Environnement - Toulouse University (Paul Sabatier), France, 3 La Rochelle metropolitan area, France, 4 University of Rennes, UMR BOREA (MNHN), France, 5 MIA - La Rochelle University, France, 6 IFREMER, Littoral, Laboratoire Environnement et Ressources des Pertuis Charentais (LER-PC), France, 7 Univ. Bordeaux, CNRS, BSE UMR 6060, France, 8 AMAP-INRAE, CIRAD, CNRS, IRD, Univ. Montpellier, France, 9 LASIE, CNRS - La Rochelle University, France, 10 LPG, University of Angers, CNRS, France, 11 MARBEC, Univ. Montpellier, Ifremer, IRD, CNRS, Sète, France, 12 UMR 6553 Ecosystèmes, Biodiversité, Evolution (ECOBI), CNRS - University of Rennes, Rennes, France, 13 Institute for Coastal and Marine Research - Nelson Mandela University, Port Elizabeth, South Africa, 14 Union des Marais de la Charente-Maritime, France, 15 La Rochelle town, France, 16 LEMAR, CNRS-IFREMER-University of Brest, France

Importance of aquatic ecosystems in the capture and sequestration of blue carbon

Rising greenhouse gas emissions are causing increasing worldwide impacts and changes on climate patterns, sea level, food production, human lives and livelihoods. Maintaining or improving the ability of coastal aquatic ecosystems and oceans to remove CO₂ from the atmosphere is a crucial aspect for climate mitigation. The vegetated coastal ecosystems are able to catch and to sequester carbon, called Blue Carbon. These ecosystems are key exchange zones that mediate the biogeochemical cycles across the continent, the ocean and the atmosphere. Given the importance of these ecosystems in biogeochemical cycles and their sensitivity to natural and anthropogenic pressures, the carbon cycle within and between compartments and across the interfaces (e.g. atmosphere, ocean...) needs to be addressed.



Objective of LRTZC project: On the regional scale, target the ambition of carbon neutrality in La Rochelle metropolitan area by 2040 through a holistic approach (from measuring CO₂ to raising people's awareness and assessing the impact of exogenous natural factors)



8 axes to transform La Rochelle metropolitan area with a holistic approach



Innovations of LRTZC project:

Holistic and methodologic innovations on experimental zones to optimize circular economy and carbon footprint of the territory

Create a territorial data plate-form to evaluate all the actions and develop new actions and uses

Carbon cooperative: a new financial paradigm to mobilize all actors

Governance: implication of more than 130 partners, citizens, public and private structures

Societal innovation to support the cultural transformation of La Rochelle metropolitan area



Objectives of the blue carbon axis:

- Assess and monitor carbon capture and sequestration on the wetlands and littoral zone: sink or a source of CO₂ to the atmosphere?
- Protect the littoral zone to the submersion and erosion
- Development of decision-making tools for scientists and stakeholders
- Support the territory actors towards the blue carbon mutation
- Replicability of the project in national and international metropolitan areas

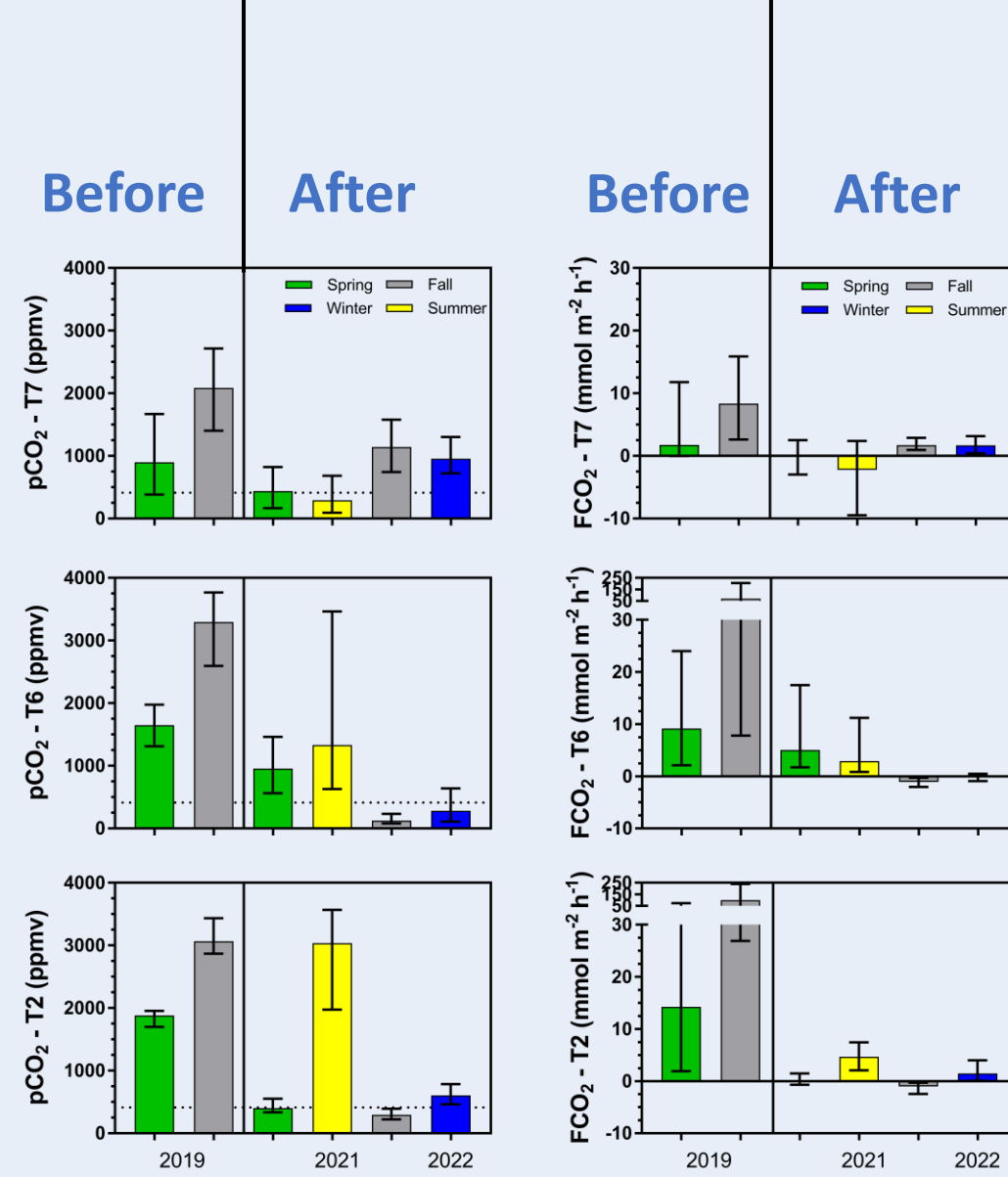
First results on the Blue Carbon axis

Atmospheric CO₂ fluxes in aquatic ecosystems

Freshwater marsh of Tasdon



Renaturation of the marsh



Methodology: seasonal 24h cycle measurements with sensors at 3 stations

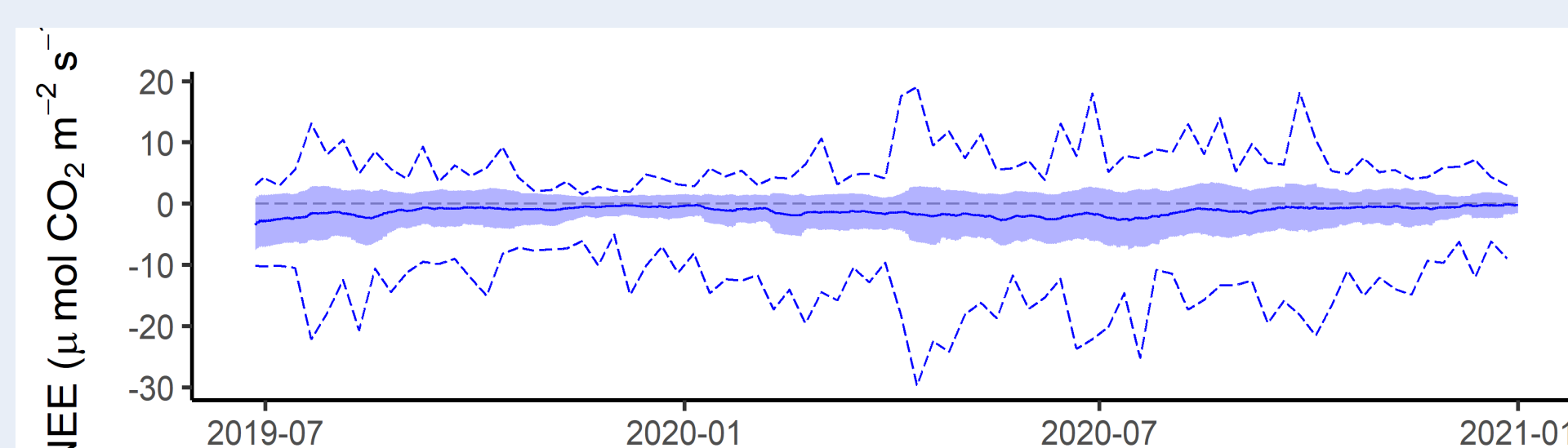
- Between 2019 and 2021: significant decrease in water pCO₂ from oversaturated (CO₂ source) to near balance, undersaturated (CO₂ sink) waters following the renaturation and reconnection of the marsh to the coastal zone.

Salt marsh of Ré Island



Methodology: Atmospheric Eddy Covariance system since summer 2019

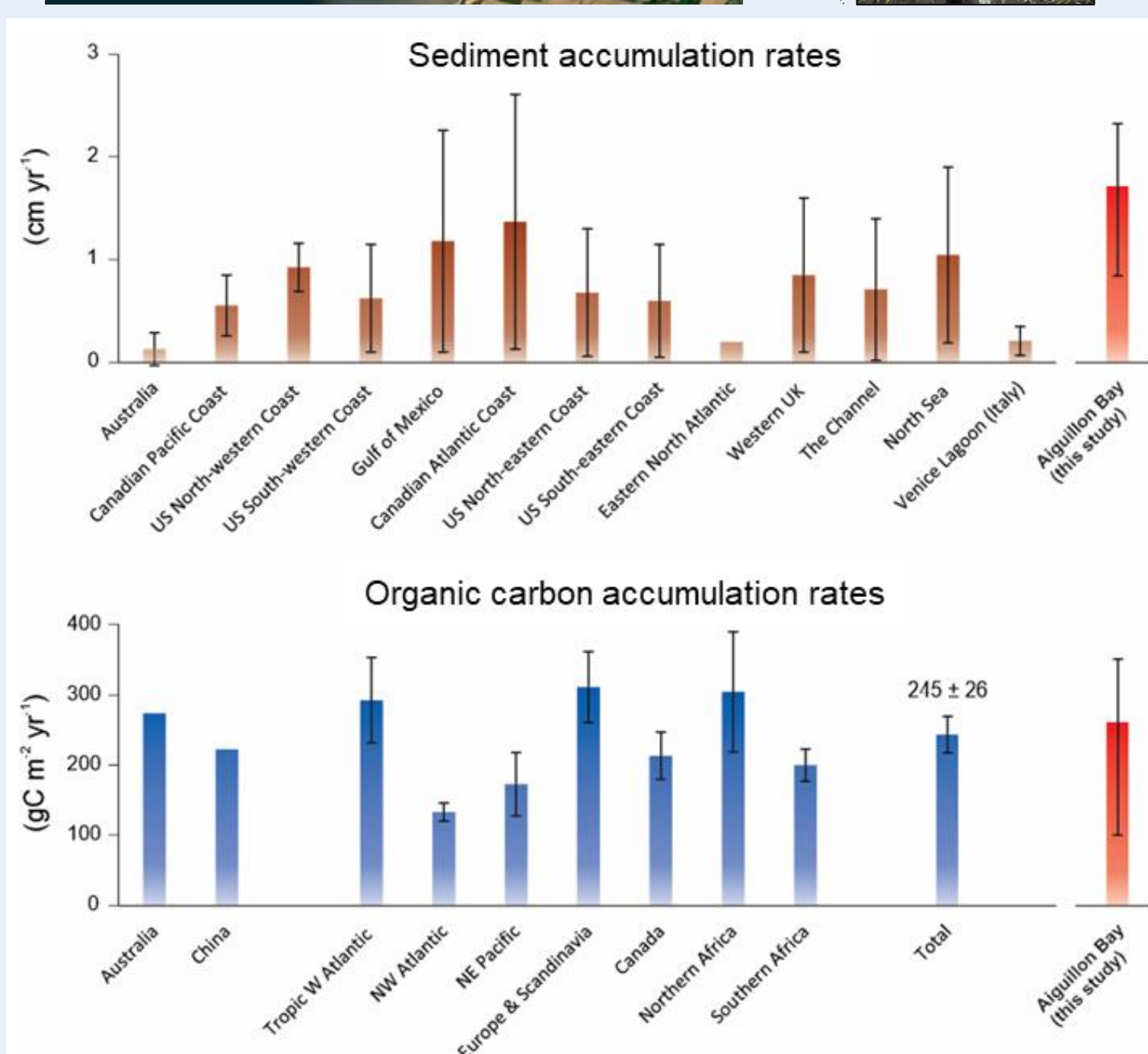
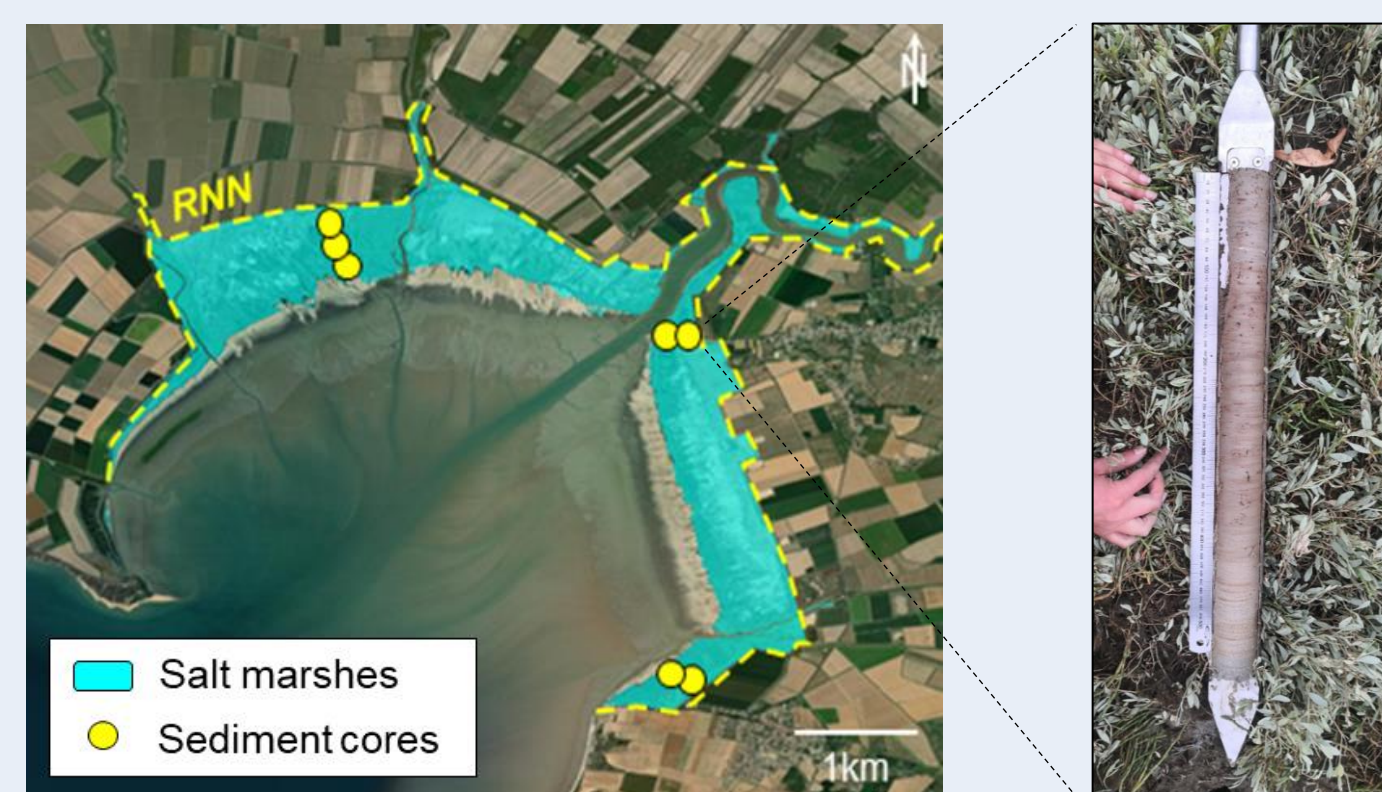
In 2020: Net ecosystem exchange (NEE): -1,41 ± 3,61 μmolCO₂ m²/s



CO₂ Sink: - 485 gC/m²/yr (- 4,85 tCeq/ha/yr or -17,78 tCO₂eq/ha/yr)

Long-term carbon accumulation in aquatic ecosystems

Salt marshes of the Aiguillon Bay

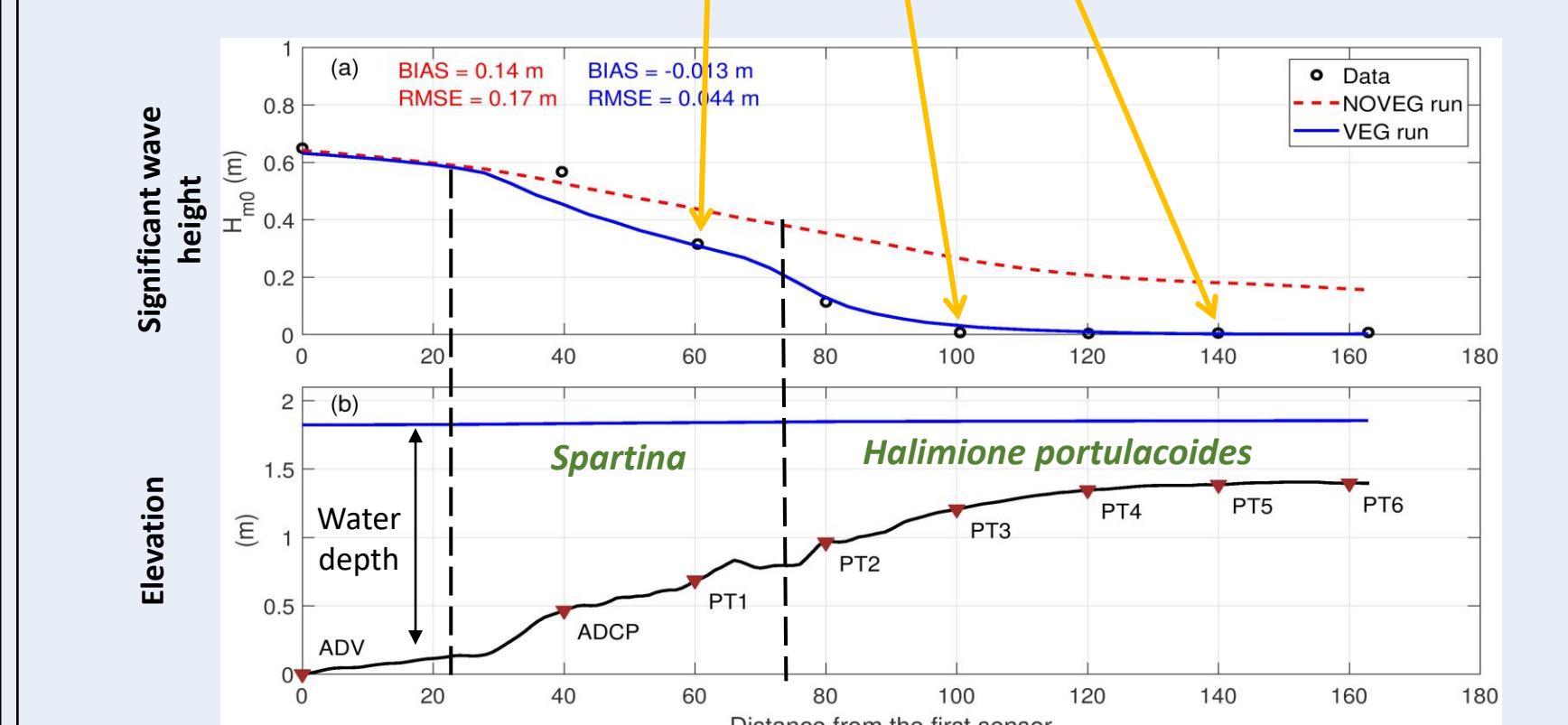
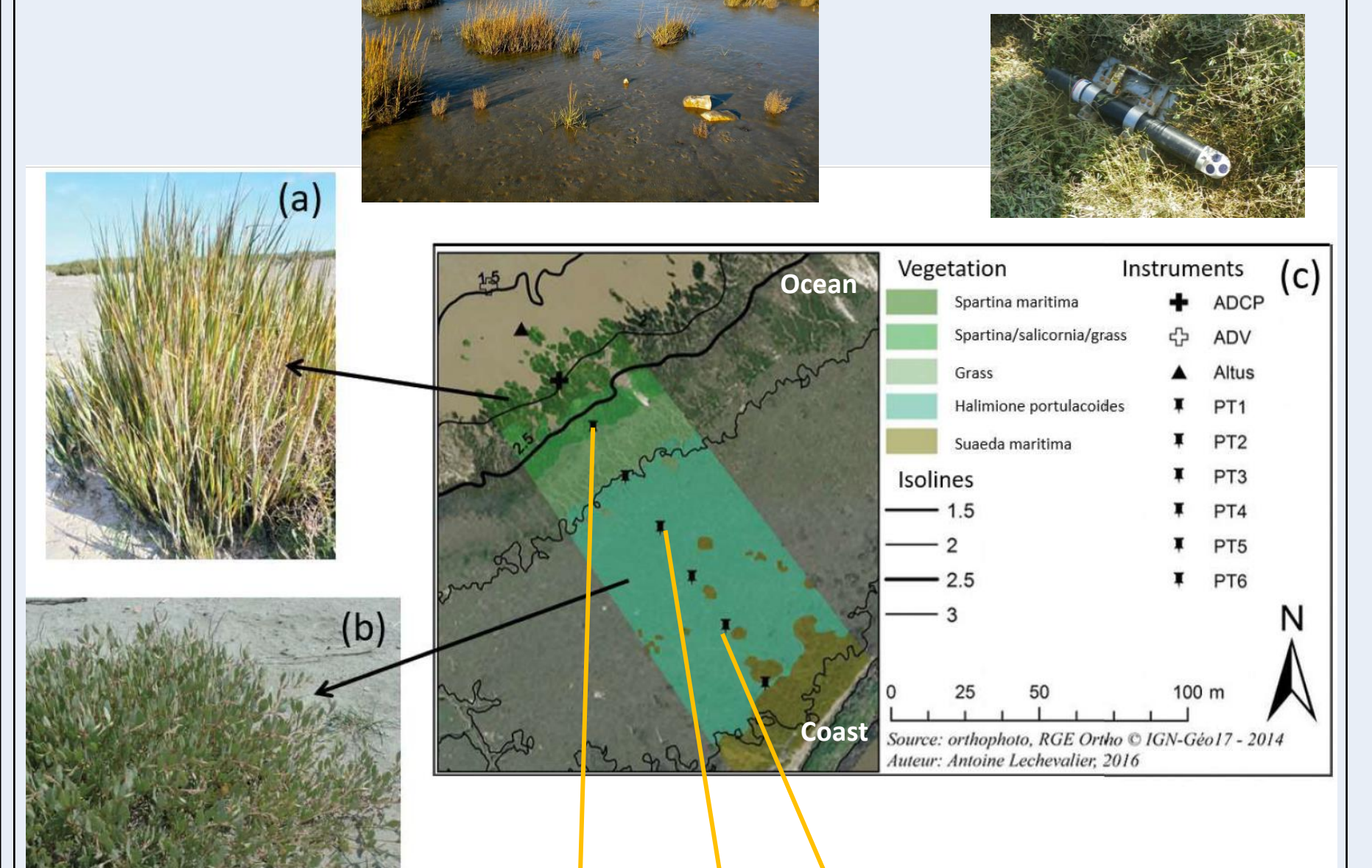


- High sediment accumulation rates >1 cm/yr lead to relatively high carbon accumulation rates in salt marshes of the region.

- Potential long-term carbon sequestration rates are within the order of 4 – 13 tCO₂eq/ha/yr.

Nature-based solutions for littoral zone protection

Salt marsh



- Vegetation accounts for 65% of wave dissipation across the salt marsh.
- Work in progress aims at quantifying the lowering of mean water level that accompanies wave propagation over vegetated bottom.

All the partners of LRTZC project: La Rochelle metropolitan area, La Rochelle town, Universities of La Rochelle, Toulouse, Rennes, Bordeaux, Montpellier, Angers, Brest, IFREMER (La Tremblade, Sète), Union des Marais de la Charente-Maritime, France and Institute for Coastal and Marine Research - Nelson Mandela University in South Africa

Contact: Christine Dupuy: cdupuy@univ-lr.fr

