



HAL
open science

Farnesyltransferase inhibition overcomes the adaptive resistance to osimertinib in EGFR-mutant NSCLC

Sarah Figarol, Célia Delahaye, Rémi Gence, Raghda Asslan, Sandra Pagano, Claudine Tardy, Jacques Colinge, Jean-Philippe Villemin, Antonio Maraver, Irene Ferrer, et al.

► **To cite this version:**

Sarah Figarol, Célia Delahaye, Rémi Gence, Raghda Asslan, Sandra Pagano, et al.. Farnesyltransferase inhibition overcomes the adaptive resistance to osimertinib in EGFR-mutant NSCLC. 2022. hal-03843955

HAL Id: hal-03843955

<https://cnrs.hal.science/hal-03843955>

Preprint submitted on 8 Nov 2022

HAL is a multi-disciplinary open access archive for the deposit and dissemination of scientific research documents, whether they are published or not. The documents may come from teaching and research institutions in France or abroad, or from public or private research centers.

L'archive ouverte pluridisciplinaire **HAL**, est destinée au dépôt et à la diffusion de documents scientifiques de niveau recherche, publiés ou non, émanant des établissements d'enseignement et de recherche français ou étrangers, des laboratoires publics ou privés.

Farnesyltransferase inhibition overcomes the adaptive resistance to osimertinib in EGFR-mutant NSCLC

Sarah Figarol^{1,2*}, Célia Delahaye^{1*}, Rémi Gence¹, Raghda Asslan¹, Sandra Pagano^{1,2}, Claudine Tardy¹, Jacques Colinge⁵, Jean-Philippe Villemin⁵, Antonio Maraver⁵, Irene Ferrer⁶, Luis Paz-Ares⁶, Isabelle Lajoie-Mazenc^{1,2}, Estelle Clermont^{1,3}, Anne Casanova³, Anne Pradines^{1,3}, Julien Mazières^{1,2,4}, Olivier Calvayrac^{1##}, Gilles Favre^{1,2,3##}.

¹ Cancer Research Center of Toulouse, INSERM U1037, CNRS ERL5294, UPS, Toulouse, France;

² University Paul Sabatier, Toulouse, France ;

³ Institut Claudius Regaud, Institut Universitaire du Cancer de Toulouse-OncoPole, Laboratory of Medical Biology and Oncogenetics, Toulouse, France ;

⁴ Toulouse University Hospital, Toulouse, France

⁵ Cancer Research Institute of Montpellier, INSERM U1194, Montpellier University, ICM, Montpellier, France

⁶ Unidad de Investigación Clínica de Cáncer de Pulmón, Instituto de Investigación Hospital 12 de Octubre-CNIO, Madrid, Spain.

* Equal contribution

Corresponding authors: favre.gilles@iuct-oncopole.fr; olivier.calvayrac@inserm.fr

ABSTRACT

Drug-tolerant “dormant” cells (DTC) have emerged as one of the major non-genetic mechanisms driving resistance to targeted therapy in lung cancer, although the sequence of events leading to entry and exit from dormancy remain poorly described. Here, we performed real-time monitoring of the cell cycle dynamics during the adaptive response to Epidermal Growth Factor Receptor tyrosine kinase inhibitors (EGFR-TKi) in a panel of EGFR-mutated lung cancer cell lines. We identified a rare population of S/G2 cycling cells (referred to as early escapers) that emerged in the first hours of treatment amongst stably arrested and progressively dying G1 cells. We determined that early escapers evolved from a non-proliferative differentiated alveolar type 1 (AT1) phenotype which was invariably associated with cytoskeletal remodeling through Rho/ROCK pathway activation. Using a panel of Rho-pathway inhibitors, we found that the farnesyltransferase inhibitor tipifarnib induced a complete clearance of EGFR-TKi-induced DTC thus fully preventing relapse *in vitro*. Using a xenograft model and a PDX model of EGFR^{L858R/T790M} lung cancer, co-treatment with tipifarnib prevented relapse to osimertinib for up to 6 months with no evidence of toxicity. Among the farnesylated proteins regulated during osimertinib treatment, concomitant inhibition of RHOE and LaminB1 was sufficient to recapitulated FTIs’ effect. Osimertinib and tipifarnib co-treatment completely suppressed the emergence of AT1 phenotype, prevented mitosis of S/G2-treated cells and increased the apoptotic response through activation of ATF4-CHOP-dependent Integrated Stress Response (ISR) pathway. Our data strongly support the use of tipifarnib in combination with osimertinib in patients to effectively and durably prevent relapse.

38 RESULTS

39 Drug-tolerance is a dynamic rather than a dormant state

40 Although an increasing number of studies have focused on characterization of drug-tolerant “dormant” cells (DTC)
41 and/or fully resistant proliferative clones (RPC)¹⁻⁶, the kinetics of evolution throughout the different states is largely
42 unknown. We used the FUCCI (fluorescence ubiquitination cell cycle indicator) system⁷ to perform a real time
43 monitoring of cell cycle dynamics in response to 1 μ M EGFR-TKi erlotinib or osimertinib in a panel of *EGFR*-mutated
44 cell lines. Importantly, cell lines were previously subcloned to minimize/avoid the presence of potential pre-existing
45 resistant cells^{2,8} (Supp Fig. 1A and B). For all cell lines, we observed a common pattern of G1 accumulation within the
46 first 48 hours of treatment (Fig. 1a, Supp Fig. 2A, videos), which was invariably associated with p27^{Kip1} overexpression
47 and Retinoblastoma (Rb) protein dephosphorylation (Supp Fig. 2B). While most cells remained in G1 and
48 progressively died resulting in bulk population decrease, a subset of cells (referred to as early escapers) rapidly
49 progressed through S/G2 (Fig. 1a-c, Supp. Fig. 2A, videos), an observation consistent with a rare, drug-tolerant cycling
50 subpopulation as recently described⁹. Interestingly, although DTC and early escapers could be observed in H3255-
51 and HCC2935-treated cells, they failed to form resistant proliferative clones in these conditions (Supp Fig 3A-D) but
52 retained the capacity to resume proliferation after drug withdraw (Supp Fig. 3E).

53 These results suggest that the establishment of an adaptive resistance mechanism through a drug-tolerant state is a
54 dynamic and progressive process and is highly variable even among genetically homogeneous cellular models.

55

56 Early escapers emerge from a differentiated alveolar-like phenotype with contractile features

57 To characterize the molecular mechanisms underlying evolution from G1-arrest to early escape, we performed
58 scRNAseq on ~3000 G1 (red) and S/G2 (green) cells sorted from both untreated and osimertinib-treated HCC4006
59 cells, which enabled enrichment of the rare population of early escapers (Fig. 1d, Supp Fig. 4A and B). In line with
60 previous reports^{2,4}, Myogenesis and Epithelial-to-Mesenchymal (EMT) signatures were strongly upregulated in both
61 G1- and S/G2-treated cells, while cell cycle-related gene signatures such as E2F_targets or G2M_checkpoint were
62 profoundly downregulated in G1 and fully restored in early escapers (Supp Fig. 4C). We observed that the most deeply
63 cell cycle-repressed cluster (Osi G1^{cluster #4}, Supp Fig. 4B) was highly enriched in alveolar type 1 (AT1)-related genes
64 such as *AQP4*, *CYP4B1*, *CLIC5*, *AGER* or *TNNC1*, but also in alveolar type 2 (AT2)-specific marker *SFTPD* (Surfactant
65 Protein D) (Fig. 1e, Supp Fig. 4D), consistent with recent data reported in minimal residual disease (MRD) of
66 osimertinib-treated NSCLC patients¹⁰. Interestingly, these genes were among the most overexpressed in healthy
67 lungs compared with adenocarcinomas as revealed by a differential expression analysis using the TCGA database
68 (Supp Fig. 4E). Pseudotime analysis revealed a progressive switch from an alveolar to a mesenchymal transcriptomic
69 profile in the Osi G1^{cluster #5} (Fig. 1e and f, Supp Fig. 5A-C) which was further enhanced in early escapers (Fig. 1g, Supp
70 Fig. 5D) strongly suggesting that the EMT process could have been initiated from the alveolar-like sub-population.
71 Using recently published gene signatures of the different lung cell types¹¹, we observed that lineage switching
72 involved a robust downregulation of mucous/goblet-related genes such as *MUC5B*, *BPIFB2*, *SCGB3A1* or *AZGP1* as
73 well as a strong overexpression of fibroblast and muscle-specific genes (Supp Fig. 5E, Supp Fig. 6A-C). This process
74 was strongly associated with extracellular matrix- and muscle-specific gene signatures (Supp Fig. 6D) and correlated
75 with a strong enrichment in cytoskeletal- and extracellular matrix-coding genes (Fig. 1h), with a different pattern of

76 expression during the phenotypic switch (Supp Fig. 6E). Since these features could be specific to the HCC4006 model,
77 we performed RNAseq experiments in drug-tolerant cells generated from other *EGFR*-mutated cell lines treated with
78 either erlotinib or osimertinib at 1 μ M. Although each cell line seemed to follow a different path of differentiation
79 (Supp Fig. 7A-C), all cell lines consistently overexpressed alveolar type 1 and contractile-related gene signatures (Supp
80 Fig. 7D and E), which were the unique common gene signatures among the models tested (Fig. 1i). Interestingly, gene
81 signatures related to cellular contractility were highly specific to the drug-tolerant state and did not necessarily
82 evolve toward a mesenchymal phenotype (Supp Fig. 8). Indeed, H3255-derived DTC strongly overexpressed alveolar
83 and muscle-specific genes but were not associated with EMT signatures (Supp Fig. 9A) and did not express EMT-
84 associated genes such as *SERPINE1*, *AXL*, *SPOCK1*, or EMT-TF (Supp Fig. 9B), which could explain their inability to form
85 fully resistant proliferative clones. Strikingly, a similar enrichment in contraction-associated cytoskeletal genes and
86 muscle specific signatures was observed in healthy lungs compared to lung adenocarcinomas (Fig. 1j and k, Supp Fig.
87 10A-D), strongly reinforcing the evidence that the DTC subtype shared phenotypic resemblance with normal
88 epithelial lung cells. Using our transcriptomic data, we built a new signature of drug tolerance composed of 350 genes
89 that were commonly upregulated in our models (*i.e.* log₂FC>1 in at least 4 out of 5 cell lines) (Supp Fig. 11A). This
90 signature was positively associated with osimertinib-induced drug-tolerance in a model of osimertinib-treated *EGFR*-
91 mutated lung PDX (see Fig. 4) and in residual disease in patients (Supp Fig. 11B) but also with healthy lungs compared
92 to lung adenocarcinomas (LUAD) (Supp Fig. 11C and D). Finally, we aimed to assess the physiological consequences
93 of this increased contractile signatures. We observed a highly reorganized cytoskeleton in all the DTC as revealed by
94 F-actin staining, with the presence of actin stress fibers and/or lamellipodia, depending on the cell type (Fig. 1l, Supp
95 Fig. 12 and 13). Interestingly, stress fibers were not detected in the H3255 cell line, which was in line with the absence
96 of EMT signatures, however increased cortical F-actin was observed.

97 Taken together, our data suggest that osimertinib-resistant cells emerge from a differentiated drug-tolerant
98 phenotype that shares similarities with an alveolar type 1 phenotype and involves cytoskeletal remodeling and
99 contractile features.

100

101 **Farnesyltransferase inhibitors prevent relapse to *EGFR*-TKi *in vitro***

102 Given that the presence of F-actin often correlates with activation of one or more Rho-GTPases^{12,13}, we hypothesize
103 that Rho-proteins could be involved in the establishment of the drug-tolerant contractile state. Indeed, RNAseq data
104 revealed that expression of *RHOB* and *RND3* (*RHOE*) was consistently increased in *EGFR*-TKi-derived DTC *in vitro* as
105 well as in osimertinib-treated PDX (Fig. 2a). Using available *in vivo* scRNAseq data from Pasi Janne's lab⁴, we observed
106 that *RHOB* and *RND3* were among the most highly upregulated genes in PC9 xenografts treated with osimertinib or
107 with osimertinib + trametinib (Fig. 2b). *RHOB* and *RHOE* were also increased at the protein level and correlated with
108 a transient increase in phospho-MLC2 and phospho-cofilin, suggesting activation of the Rho/ROCK pathway during
109 an early stage of drug-tolerance (Fig. 2c, Supp Fig. 14A). Interestingly, *RHOB* overexpression appeared to be highly
110 associated with cell cycle arrest (Fig. 1c, Supp Fig. 14A-D) and its expression was also correlated with an AT1 signature
111 in lung cancer patients as revealed by a TCGA analysis (Supp Fig. 14C). By contrast, *RHOE* expression was correlated
112 with EMT and fibroblastic features (Supp Fig. 14B and E), suggesting different functions for the two GTPases during
113 the adaptive response. These data are in agreement with our findings describing a role for *RHOB* in resistance to

114 targeted therapy in EGFR-mutated lung cancer patients¹⁴ and BRAF-mutated melanoma¹⁵, although implication of
115 RHOB or RHOE in the establishment of a drug-tolerant state has never been assessed. These observations prompted
116 us to assess the efficacy of a panel of inhibitors of the Rho/ROCK pathway to prevent relapse to EGFR-TKi, such as
117 ROCK inhibitors (Y27632, GSK269962A, RKI1447), the RhoA/B/C inhibitor C3-exoenzyme (tatC3), AKT inhibitor
118 (G594), farnesyltransferase inhibitor (FTI, tipifarnib) and geranylgeranyltransferase inhibitor (GGTi, GGTi-298).
119 Strikingly, all the inhibitors, excepted RKI1447, displayed cytotoxic or cytostatic activity on DTC and strongly delayed
120 the emergence of resistant clones (Fig. 2d and e), however only tipifarnib fully prevented the development of
121 resistances to osimertinib or erlotinib in all the cell line tested (Fig. 2d and e, Supp Fig. 15A), with no significant effect
122 when used alone (Supp Fig. 15B). Combination with other FTIs such as CP-609754, lonafarnib or FTI-2153 showed
123 similar effect, leading to cell death (Fig. 2f, Supp Fig. 15C). Interestingly, tipifarnib could also prevent the emergence
124 of resistance to EGFR-TKi in both subclonal and parental cell lines (Fig. 2d-f), suggesting that inhibition of
125 farnesyltransferase could also affect potentially pre-existing resistant subclones (Supp. Fig. 1A). Unexpectedly,
126 treatment of early-emerging osimertinib-resistant proliferative clones with tipifarnib also lead to tumor regression,
127 suggesting that these cells still displayed vulnerability to inhibition of farnesyltransferase (Fig. 2g and h). However,
128 complete clearance of tumor cells was not often achieved when tipifarnib was used after relapse, suggesting that the
129 cells that had acquired resistance to osimertinib displayed reduced sensitivity to farnesyltransferase inhibition (Fig.
130 2h, Supp Fig. 16).

131 Our data show that Rho/ROCK pathway inhibitors efficiently prevent relapse to EGFR-TKi, among which tipifarnib
132 displayed the most efficient and profound anti-tumor effect on both DTC and early-emerging clones.

133

134 **Osimertinib+Tipifarnib treatment induces mitotic defects and integrated stress response (ISR)-mediated apoptotic** 135 **pathway**

136 To decipher the molecular mechanisms underlying tipifarnib's ability to prevent relapse to osimertinib, we performed
137 scRNAseq on osimertinib + tipifarnib (OT)-treated G1 and S/G2 sorted cells and compared transcriptomes with those
138 from cells treated with osimertinib. Strikingly, osimertinib-induced genes associated with our DRUG_TOLERANT_UP
139 signature were drastically downregulated by tipifarnib as were many of the gene signatures related to EMT,
140 myogenesis and cell-cycle (Fig. 3a and b, Supp Fig. 17A-D). Unexpectedly, tipifarnib prevented the upregulation of
141 alveolar type 1 and fibroblast-specific genes but maintained muscle-associated genes such as *MYL7*, *ACTC1* or *ACTA1*,
142 specifically in the S/G2 population (Fig. 3c, Supp Fig. 18A-C). We aimed to decipher the physiological consequence of
143 tipifarnib treatment on DTC. Time-lapse imaging of Fucci-transduced cells revealed that, although tipifarnib did not
144 prevent the emergence of osimertinib-derived early escapers, escaping cells failed to undergo mitosis and ultimately
145 died (Fig. 3d), suggesting that tipifarnib may interfere with cell division in these cells. We also observed that a high
146 percentage of OT-treated cells that progressed to S/G2 returned to G1 without dividing, consistent with a process of
147 mitotic slippage or endoreplication^{16,17}, which was also observable at lower frequency in osimertinib-treated cells
148 (Fig. 3d, Supp Fig. 19). Although this process is often used by cells as a mechanism of drug-resistance^{16,17}, none of the
149 cells that underwent this process were able to divide and ultimately died (Fig. 3d, videos). We also observed that OT-
150 treatment strongly upregulated ATF4-regulated genes¹⁸ such as *DDIT3/CHOP*, *ATF3*, *CHAC1*, *PSAT1*,
151 *FAM129A/NIBAN1* and the pro-apoptotic *BBC3/PUMA* (Fig. 3e and f). ATF4 can be induced by several processes

including the Unfolded Protein Response (UPR) or the Integrated Stress Response (ISR)¹⁹. Upregulation of ATF4 and CHOP by OT treatment was confirmed at the protein level and correlated with PARP and Caspase 3 cleavage (Fig. 3g), strongly suggesting that activation of this pathway was responsible for OT-induced cell death.

Identification of potential pharmacological targets of tipifarnib

We sought to identify farnesylated proteins that might explain tipifarnib's ability to prevent relapse to EGFR-TKI. Consistent with previous findings¹⁴, siRNA-mediated inhibition of RHOB, but also RHOE, increased initial sensitivity to osimertinib (Supp Fig. 20A and B), although it failed to fully prevent relapse (Supp Fig. 20B, *data not shown*), suggesting that inhibition of these GTPases could not fully recapitulate tipifarnib's effect. Using a recently published list of farnesylated proteins²⁰ we observed in our scRNAseq data that several GTPases including *RHOB* and *RND3* were overexpressed by osimertinib in G1-treated cells, whereas the expression of cell-division-related genes such as *LMNB1*, *CENPF* or *SPDL1* was highly repressed during G1 but fully restored in S/G2 (Fig. 3h). Although individual inhibition of these genes increased sensitivity to osimertinib (Fig. 3i, Supp Fig. 20A and B), only inhibition of both RHOE and LaminB1 induced a complete clearance of osimertinib-treated cells, thus recapitulating tipifarnib's effect (Fig. 3j), suggesting inhibition of both proteins was needed to fully prevent relapse to osimertinib. Collectively, our data suggest that tipifarnib prevents relapse to EGFR-TKI through a multi-targeted effect involving GTPases and cell-cycle regulators, resulting in impaired phenotypic differentiation, mitotic defaults and subsequent cell death through an ATF4-CHOP-dependent apoptotic pathway.

Tipifarnib prevents relapse to EGFR-TKI *in vivo*

Finally, we aimed to test the combination of osimertinib and tipifarnib (OT) *in vivo* using several models of EGFR-mutated lung tumors. In a PC9 xenograft model, combination of osimertinib (5 mg/Kg, q.d., 5d/w) and tipifarnib (80 mg/Kg, b.i.d., 5d/w) induced a strong and stable response for up to 6 months with an almost complete response in all animals, whereas osimertinib induced a less potent effect and relapse was observed in 4/10 tumors (Fig. 4a-c, Supp Fig. 21A). OT treatment was well tolerated by the mice as indicated by a stable body weight, with no discernible effect on the general appearance of the mice (Supp Fig. 21B). We used the same treatment protocol in a PDX model of EGFR^{L858R/T790M} lung adenocarcinoma (TP103²¹). Osimertinib induced a moderate response with relapse of all (10/10) mice within 2 months, whereas OT-treatment induced significantly higher tumor regression in the first months with an almost stable disease lasting up to 5 months (Fig. 4d-g, Supp Fig. 22A-H), at which time OT-treated mice were sacrificed for subsequent molecular analysis of their tumors. As before, OT treatment was well tolerated by the mice as indicated by stable body weight (Supp Fig. 21B and F) and a good general aspect, thus confirming a good long-term tolerability of the treatment. Consistently with *in vitro* data, OT-treated tumors showed a strongly reduced proliferative state even after 5 months of treatment as highlighted by Ki67 staining (Fig. 4h). This correlated with increased p27^{Kip1} levels and reduced phospho-Rb as well as increased PARP and Caspase 3 cleavage, suggesting that non-cycling OT-treated cells were undergoing apoptosis (Fig. 4i). Low proliferation was confirmed by scRNAseq analysis (Fig. 4j-l, Supp Fig. 23), which also revealed an increased expression of ATF4-regulated genes (Fig 4m), which could suggest that the ISR pathway may also contribute to apoptosis *in vivo*.

190 Here, we report that adaptive response to osimertinib is a highly dynamic process which invariably involves
191 differentiation through an alveolar type-1 phenotype characteristically expressing cytoskeletal proteins involved in
192 cellular contraction. Using a panel of Rho/ROCK pathway inhibitors, we found that tipifarnib, a clinically active
193 farnesyltransferase inhibitor, efficiently and durably prevented relapse to osimertinib *in vitro* and *in vivo* by inducing
194 an ATF4-dependent apoptotic response, with no evidence of toxicity in mice. Initially designed to inhibit RAS-driven
195 cancer, FTIs did not achieve the expected clinical success, due to the lack of clarity of the clinical indication and the
196 farnesylated proteins targeted for their pharmacological effects. Here we propose tipifarnib prevents the appearance
197 of DTC and limit resistance to EGFR TKIs in EGFR-mutated lung cancer. In addition, we propose that concomitant
198 inhibition of at least two farnesylated proteins RHOE and LaminB1 is sufficient to phenocopy tipifarnib's effects
199 suggesting that tipifarnib act on multiple targets. Our work opens the way to a new therapeutic combination to
200 increase the efficacy of EGFR-targeted therapies.

201
202
203
204
205
206
207
208
209
210
211
212
213
214
215
216
217
218
219
220
221
222
223
224
225
226
227

228 **REFERENCES**

- 229 1 Sharma, S. V. *et al.* A chromatin-mediated reversible drug-tolerant state in cancer cell subpopulations. *Cell*
230 **141**, 69-80, doi:10.1016/j.cell.2010.02.027 (2010).
- 231 2 Hata, A. N. *et al.* Tumor cells can follow distinct evolutionary paths to become resistant to epidermal growth
232 factor receptor inhibition. *Nature medicine* **22**, 262-269, doi:10.1038/nm.4040 (2016).
- 233 3 Ramirez, M. *et al.* Diverse drug-resistance mechanisms can emerge from drug-tolerant cancer persister cells.
234 *Nature communications* **7**, 10690, doi:10.1038/ncomms10690 (2016).
- 235 4 Kurppa, K. J. *et al.* Treatment-Induced Tumor Dormancy through YAP-Mediated Transcriptional
236 Reprogramming of the Apoptotic Pathway. *Cancer cell* **37**, 104-122 e112, doi:10.1016/j.ccell.2019.12.006
237 (2020).
- 238 5 Guler, G. D. *et al.* Repression of Stress-Induced LINE-1 Expression Protects Cancer Cell Subpopulations from
239 Lethal Drug Exposure. *Cancer cell* **32**, 221-237 e213, doi:10.1016/j.ccell.2017.07.002 (2017).
- 240 6 Vallette, F. M. *et al.* Dormant, quiescent, tolerant and persister cells: Four synonyms for the same target in
241 cancer. *Biochem Pharmacol* **162**, 169-176, doi:10.1016/j.bcp.2018.11.004 (2019).
- 242 7 Sakaue-Sawano, A. *et al.* Visualizing spatiotemporal dynamics of multicellular cell-cycle progression. *Cell* **132**,
243 487-498, doi:10.1016/j.cell.2007.12.033 (2008).
- 244 8 Turke, A. B. *et al.* Preexistence and clonal selection of MET amplification in EGFR mutant NSCLC. *Cancer cell*
245 **17**, 77-88, doi:10.1016/j.ccr.2009.11.022 (2010).
- 246 9 Oren, Y. *et al.* Cycling cancer persister cells arise from lineages with distinct programs. *Nature* **596**, 576-582,
247 doi:10.1038/s41586-021-03796-6 (2021).
- 248 10 Maynard, A. *et al.* Therapy-Induced Evolution of Human Lung Cancer Revealed by Single-Cell RNA
249 Sequencing. *Cell* **182**, 1232-1251 e1222, doi:10.1016/j.cell.2020.07.017 (2020).
- 250 11 Travaglini, K. J. *et al.* A molecular cell atlas of the human lung from single-cell RNA sequencing. *Nature* **587**,
251 619-625, doi:10.1038/s41586-020-2922-4 (2020).
- 252 12 Rottner, K., Faix, J., Bogdan, S., Linder, S. & Kerkhoff, E. Actin assembly mechanisms at a glance. *Journal of*
253 *cell science* **130**, 3427-3435, doi:10.1242/jcs.206433 (2017).
- 254 13 Sit, S. T. & Manser, E. Rho GTPases and their role in organizing the actin cytoskeleton. *Journal of cell science*
255 **124**, 679-683, doi:10.1242/jcs.064964 (2011).
- 256 14 Calvayrac, O. *et al.* The RAS-related GTPase RHOB confers resistance to EGFR-tyrosine kinase inhibitors in
257 non-small-cell lung cancer via an AKT-dependent mechanism. *EMBO molecular medicine* **9**, 238-250,
258 doi:10.15252/emmm.201606646 (2017).
- 259 15 Delmas, A. *et al.* The c-Jun/RHOB/AKT pathway confers resistance of BRAF-mutant melanoma cells to MAPK
260 inhibitors. *Oncotarget* **6**, 15250-15264, doi:10.18632/oncotarget.3888 (2015).
- 261 16 Shu, Z., Row, S. & Deng, W. M. Endoreplication: The Good, the Bad, and the Ugly. *Trends Cell Biol* **28**, 465-
262 474, doi:10.1016/j.tcb.2018.02.006 (2018).
- 263 17 Gandarillas, A., Molinuevo, R. & Sanz-Gomez, N. Mammalian endoreplication emerges to reveal a potential
264 developmental timer. *Cell Death Differ* **25**, 471-476, doi:10.1038/s41418-017-0040-0 (2018).
- 265 18 Torrence, M. E. *et al.* The mTORC1-mediated activation of ATF4 promotes protein and glutathione synthesis
266 downstream of growth signals. *Elife* **10**, doi:10.7554/eLife.63326 (2021).
- 267 19 Pakos-Zebrucka, K. *et al.* The integrated stress response. *EMBO Rep* **17**, 1374-1395,
268 doi:10.15252/embr.201642195 (2016).
- 269 20 Storck, E. M. *et al.* Dual chemical probes enable quantitative system-wide analysis of protein prenylation and
270 prenylation dynamics. *Nat Chem* **11**, 552-561, doi:10.1038/s41557-019-0237-6 (2019).
- 271 21 Quintanal-Villalonga, A. *et al.* FGFR1 Cooperates with EGFR in Lung Cancer Oncogenesis, and Their Combined
272 Inhibition Shows Improved Efficacy. *Journal of thoracic oncology : official publication of the International*
273 *Association for the Study of Lung Cancer* **14**, 641-655, doi:10.1016/j.jtho.2018.12.021 (2019).

274

275

276

277

278

279

280 MATERIALS AND METHODS

281 Cell culture

282 The human NSCLC cell-lines HCC4006 (CRL-2871, EGFR del L747-E749, A750P), HCC827 (CRL-2868, EGFR del E749-
283 A750), HCC2935 (CRL-2869, EGFR del E746-T751, S752I) were obtained from the American Type Culture Collection
284 (Manassas, VA, USA). The H3255 NSCLC cell line (EGFR L858R) and PC9 NSCLC cell-line (EGFR del E746-A750) were a
285 kind gift from Helene Blons (APHP, Paris, France) and Antonio Maraver (IRCM, Montpellier, France) respectively. and
286 were a kind gift from. For each cell-line, subclones were generated by limiting dilution. Moreover, subcultures were
287 conducted for a limited period of time in order to limit cell deviation.

288 NSCLC cell-lines were cultured in RPMI (Roswell Park Memorial Institute) 1640 medium containing 10% fetal bovine
289 serum (FBS) and were maintained at 37°C in a humidified chamber containing 5% CO₂. Cell lines were authenticated
290 and tested for mycoplasma contamination within the experimental time frame.

291 Cells were transduced with the Incucyte® Cell Cycle Green/Red lentivirus based on the FUCI system, and selected
292 by puromycin treatment for one week.

293

294 SiRNA targeting RHOB, RHOE, LaminB1.

295 Twenty-four hours after seeding, cells were transfected for 4h with siRNA (SMARTpool Dharmacon™) at a final
296 concentration of 10nM, and 1µM osimertinib was added 24h hours after transfection. Transfection was repeated
297 twice a week until relapse while maintaining osimertinib treatment. For combo transfection with two siRNAs, each
298 siRNA was transfected at a final concentration of 5 nM and response to osimertinib was compared to cells transfected
299 with siRandom at a final concentration of 10 nM.

Target	SiRNA Reference Provider	Transfection agent reference rovider
RHOB	SiGENOME Human RHOB (388) siRNA - SMARTpool Dharmacon™	jetPRIME® Polyplus transfection®
RHOE	SiGENOME Human RND3 (390) siRNA - SMARTpool Dharmacon™	jetPRIME® Polyplus transfection®
LaminB1	SiGENOME Human LMNB1 (4001) siRNA - SMARTpool Dharmacon™	jetPRIME® Polyplus transfection®
Random	SiGENOME Non-Targeting siRNA pool#1 Dharmacon™	jetPRIME® Polyplus transfection®

300

301 Inhibitors

302 Cells were treated with the following inhibitors at the indicated concentrations two to three days after seeding, with
303 medium changes twice a week for the whole duration of the experiment.

Target	Drug	Provider	Reference	Concentrations used for <i>in vitro</i> experiments
EGFR	Erlotinib (OSI-744, CP-358774, NSC 718781)	LC Laboratories	E4997	1µM
	Osimertinib (AZD9291)	LC Laboratories	0-7200	1µM
Farnesyl-transferase	Tipifarnib (R115777, IND 58359)	Kura Oncology		0.1 - 1µM
	Lonafarnib	Selleckchem	S2797	0.1 - 1µM
	CP-609754	Kura Oncology		0.1 - 1µM

	FTi-2153	Kindly provided by Saïd Sebti and Andrew D. Hamilton		1μM
Géranylgeranyl-transferase I	GGTI-298	Selleckchem	S7466	1μM
	GGTI-2166	Kindly provided by Saïd Sebti and Andrew D. Hamilton		1μM
ROCK	Y27632	Selleckchem	S1049	10μM
	GSK269962A	Selleckchem	S7687	0.3μM
	RKI-1447	Selleckchem	S7195	1μM
RHOA, B, C	TAT-C3	C3 exoenzyme coupled to permeant peptide TAT (1 or 10 μg/ml) were produced and purified in our laboratory using an Akta purifier (GE Healthcare) as previously described (réf: Sahai, E. & Olson, M. F. Purification of TAT-C3 exoenzyme. Meth. Enzymol. 406, 128–140 (2006)).		2 à 5 μg/ml
Actin	Latrunculin B	Sigma-Aldrich	428020	0.3μM
CDK4/6	Palbociclib	Selleckchem	S1579	1μM

304

305 Cell growth and viability assays on GFP-positives cells

306 Cells were transduced with a lentiviral vector (pLenti CMV GFP DEST (736-1), 9216bp) to obtain a constitutive
 307 expression of GFP protein. GFP-positives cells were selected by cell sorting using FACS Melody (BD Biosciences).
 308 Fluorescence intensity in each well of 96-well plate was evaluated twice a week using Synergy™ 2 Multi-Detection
 309 Microplate Reader. Relative cell survival in the presence of inhibitors which is proportional to fluorescence intensity
 310 was normalized to untreated cells after background corrections. Images of GFP-positive cells were obtained with
 311 Incucyte® S3 Live-Cell Analysis software (Sartorius).

312

313 Crystal violet staining

314 Untreated control cells and treated cells in culture plates were wash with PBS, fixed with paraformaldehyde 4 %
 315 solution for 10 min and stained with a solution containing PBS - 0.5% crystal violet (Sigma-Aldrich/Merck, ref: C3886)
 316 – 25% methanol for 10 minutes. After 3 washes and drying, cell staining was imaged with a ChemiDoc™ MP Imaging
 317 system (Bio-Rad).

318

319 Cytotoxicity assay

320 Viability of untreated cells or treated cells for 5 days was assessed using CellTiter 96® AQueous One Solution Cell
 321 Proliferation Assay (MTS) (Promega®, ref:G3580) according to manufacturer's instructions.

322

323 Western blot analyses

324 For *in vitro* experiments, cells were lysed with RIPA buffer complemented with proteases- and phosphatases-
 325 inhibitors. For animal experiments, frozen tumors were ground and lysed with Tris-SDS 1% buffer complemented
 326 with proteases- and phosphatases-inhibitors. After sonication, protein content was quantified using Bradford

327 method. Protein extracts were separated on SDS-PAGE and electrotransferred on polyvinylidene difluoride
328 membranes. Blots were probed with primary antibodies reported in the following table:

Target	Provider	Reference
RhoB	Santa Cruz Biotechnology	Sc-180
RhoA	Santa Cruz Biotechnology	Sc-418
RhoC	Cell Signaling	#3430
RhoE	Cell Signaling	#3664
p-ERK1/2 Thr202/Tyr204	Cell Signaling	#4377
ERK	Santa Cruz Biotechnology	Sc-93
p-EGFR Tyr1068	Cell Signaling	#2234
EGFR	Cell Signaling	#4267
Vimentin	Cell Signaling	#3932
E-cadherin	Cell Signaling	#3195
N-cadherin	Cell Signaling	#4061
SLUG	Cell Signaling	#9585
SNAIL	Cell Signaling	#3879
p-RB Ser807/811	Cell Signaling	#9308
RB	Cell Signaling	#9309
p27	Cell Signaling	#3686
p53	Cell Signaling	#48818
Cyclin D1	Cell Signaling	#2978
Cyclin E1	Cell Signaling	#20808
p-MLC2 Ser19	Cell Signaling	#3671
MLC2	Cell Signaling	#8505
p-Cofilin Ser3	Cell Signaling	#3313
Cofilin	Cell Signaling	#5175
PARP	Cell Signaling	#9542
Caspase-3 cleaved	Cell Signaling	#9661
Caspase-3	Cell Signaling	#9662
Lamin B1	Abcam	Ab16048
Actin	Merck Millipore	MAB1501

329

330 Detection was performed using peroxydase-conjugated secondary antibodies and chemiluminescent detection kit
331 (Clarity™ Western ECL, Bio-Rad) with a ChemiDoc™ MP Imaging system (Bio-Rad).

332

333 Immunoprecipitation

334 Cells protein lysates were immunoprecipitated with a specific antibody for the GTP-bound active form of RHOA,
335 RHOB and RHOC GTPases (RH12) designed in the laboratory ^{25,26}. Then RHOA-, RHOB- and RHOC-active form
336 expression was revealed by western blot.

337

338 Phase contrast microscopy

339 Cells were imaged with ZEISS Axio Vert.A1 microscope and analysed with ZEN software (ZEISS).

340

341 Phalloidin staining

342 Cells were first fixed with paraformaldehyde 4 % solution, permeabilized with a PBS-BSA 0.1 %- Triton X-100 0.5 %
343 solution, blocked with a PBS-BSA 1 %- Triton X-100 0.1 % solution and stained using Alexa Fluor™ 594 phalloidin
344 (ThermoFisher Scientific, #A12381) diluted 50 times in a PBS-BSA 0.1 %- Triton X-100 0.1 % solution. Then, nuclei
345 were stained with DAPI (4', 6-diamidino-2-phenylindole, dihydrochloride, ThermoFisherScientific, #D1306). Images
346 were acquired with ZEISS Axio Vert.A1 microscope and analysed with ZEN software (ZEISS). Quantification of F-actin
347 intensity was performed by ImageJ software

348

349 **Cell cycle analysis**

350 Cells were transduced with Incucyte® Cell Cycle Green/Red Lentivirus Reagent (EF1 α -Puro) (Sartorius, Cat. No. 4779)
351 as recommended by the manufacturer and transduced cells were selected by puromycin treatment. Cells were
352 imaged every hour with Incucyte® S3 Live-Cell Analysis System (Sartorius). G1-phase, S/G2/M-phase and G1/S-phase
353 cells were quantified using Incucyte® S3 Live-Cell Analysis software (Sartorius).

354

355 **RNA sequencing**

356 Subclones generated from HCC4006, PC9 and H3255 cell lines were treated with 1 μ M erlotinib for 24h, 21 days (DTC
357 state) and cultured for more than 3 months in the presence of the drug (RPC state, Resistant Proliferative Clones) for
358 HCC4006 and PC9. HCC827 were treated until reaching the drug-tolerant state (11 days) with 1 μ M osimertinib. RNA
359 extraction was performed using AllPrep DNA/RNA Mini kit (Qiagen, #80204) according to manufacturer's protocol.
360 RNA quality was assessed using Fragment Analyzer (Agilent technologies) and the RQN values were provided to
361 confirm the integrity of total RNA. RNA concentration was determined by fluorescent method using Quant-iT™ RNA
362 Assay Kit, Broad Range (ThermoFisher Scientific). RNA samples were processed with Illumina TruSeq® Stranded
363 mRNA Library Preparation Kit following the manufacturer's protocol. Library size and quality were confirmed on
364 Fragment analyzer (Agilent Technologies). KAPA quantification kit for Illumina platforms (KAPA Biosystems, Roche)
365 was used to quantify library by qPCR. Indexed libraries were pooled and sequenced on an Illumina NextSeq 550 (2x75
366 bp paired-end reads).

367 Reads were mapped and counted using the RNA-Seq by Expectation Maximization (RSEM) software v. 1.3 (with
368 bowtie2-2.3.5.1) based on the human reference genome UCSC hg38. Differential expression was analysed with
369 DESeq2.

370

371 **Single-cell capture**

372 *HCC4006-treated cells*

373 HCC4006 subcloned cells were expanded in untreated, osimertinib- or osimertinib + tipifarnib-containing medium
374 for 4, 20 and 12 days respectively. Medium was changed 24h before sorting. Cells were dissociated by trypsinisation,
375 recovered in FACS buffer (0,04% BSA in PBS) and kept on ice. G1 (red) and S/G2 (green) cells were sorted at 4°C using
376 FACS Melody (BD Biosciences). Cells were spun down and resuspended in appropriate volume for a final
377 concentration of 500 to 1500 cells / μ l, with a viability above 85%. 6000 cells per sample were loaded to the
378 Chromium Controller (10X Genomics) and 1900-3300 cells were recovered depending on the sample. scRNA-seq

379 libraries were generated using the 10X Genomics Chromium Single Cell 3' Kit v2 according to manufacturer's
380 instructions. The libraries were profiled with the HS NGS kit for the Fragment Analyzer (Agilent Technologies) and
381 quantified using the KAPA library quantification kit (Roche Diagnostics). The libraries were pooled and sequenced on
382 the Illumina NextSeq550 instrument by the CRCT Genomics platform using the High Output 150 cycles kit. The single-
383 indexed sequencing parameters were 28, 8, 0, 91 cycles (read 1, index 1, index 2, read 2). The dual-indexed
384 sequencing parameters were 28, 10, 10, 90 cycles (read 1, index 1, index 2, read 2). An average depth of ~46000
385 reads/cell was obtained.

386

387 *Patient-Derived Xenograft*

388 The PDX model (EGFR^{T790M/L858R}, TP103²¹) was generated in the Paz-Ares laboratory at the Instituto de Biomedicina
389 de Sevilla (IBIS). Tumours were collected, cut into 2-4 mm pieces on ice and dissociated by mechanical and enzymatic
390 reaction following the Miltenyi Tumour Dissociation Kit instructions (GentleMACS program h_tumor_02). Samples
391 were filtered through a MACS SmartStrainer 70 µm. Erythrocytes were lysed following the Red Blood Cell Lysis
392 Solution protocol (Miltenyi Biotec). Samples were frozen in RPMI 10% DMSO 20% FBS until the day of single-cell
393 capture. Samples from all conditions were thawed and processed on the same day following the 10X Genomics
394 Thawing Dissociated Tumor Cells for Single Cell RNA Sequencing protocol. Cells were recovered in appropriate
395 volume for a final concentration of 500 to 1000 cells / µl, with a viability above 70%. 4500 cells per sample were
396 loaded to the Chromium Controller (10X Genomics) and scRNA-seq libraries were generated using the 10X Genomics
397 Chromium Single Cell 3' Kit v2 according to manufacturer's instructions. The libraries were sequenced with a NextSeq
398 550 (Illumina) by the CRCT Genomics platform. An average depth of ~27000 reads/cell was obtained.

399

400 **Single cell RNA sequencing analysis**

401 The single cell transcriptomic data was loaded from Kurppa et al.⁴ on GEO under accession number GSE131604. The
402 data from the different conditions were pulled together to create a global counts matrix. A dimension reduction by
403 principal component analysis (PCA), a t-SNE projection and a k-means clustering were done using the clustering
404 function of the SingleCellSignalR R package. Two differential gene expression analyses were done using the
405 cluster_analysis function of SingleCellSignalR using respectively the cluster vector from the clustering function cited
406 above and a cluster vector created to correspond to the different conditions. The p-value threshold was set by default
407 at 5%. A pathway signature genes table was retrieved from Reactome and GO. The mean expression of the genes in
408 each pathway was calculated in each cell to create a mean pathway expression matrix. Violin plots of the mean
409 pathway expression were computed and displayed using the ggplot2 package. The heatmaps were generated using
410 the ComplexHeatmap R package. The t-SNE expression plots were done using the expression_plot function of
411 SingleCellSignalR. All the analyses were carried out with RStudio.

412

413 **Mouse xenograft studies**

414 Cell line xenograft experiments were performed in 6 to 8-week old female NMRI mice (Charles River Laboratories) by
415 injecting 10 million PC9 cells in 50% matrigel subcutaneously on each flank of the mouse. The PDX model
416 (EGFR^{T790M/L858R}, TP103²¹) was cut and engrafted subcutaneously into the flank of NSG mice.

417 When tumors reached on average 200 to 300 mm³ (calculated as [length x width² x 3.14/6]), mice were randomized
418 and treated by oral gavage 5 days a week with 100µl of vehicle, osimertinib (5 mg/kg q.d), tipifarnib (80 mg/kg b.i.d)
419 or a combination of osimertinib and tipifarnib. Osimertinib was diluted in 0,5% carboxymethylcellulose (Sigma,
420 M0512) + 0,1% Tween80 (Sigma, P8074) and Tipifarnib in 2-hydroxypropyl-cyclodextrin 20% (Sigma, H107). Tumors
421 were measured twice a week. Mice were weighted twice a week to monitor toxicity and humanely killed at indicated
422 times and tumors harvested.

423 **Immunohistochemistry**

424 Tissues were fixed in 10% formalin overnight at room temperature, stored in 70% ethanol at 4°C and embedded in
425 paraffin. Four-micrometer paraffin sections were used for hematoxylin and eosin staining followed by immuno-
426 histochemistry using standard procedures with Ki67 antibody (SP6; Thermo Scientific). Quantification of Ki67 IHC
427 scores for each treatment was blind evaluated by two operators.

428

429 **TCGA and GSEA analysis**

430 RSEM-normalized expression data of human lung adenocarcinomas (517 samples) and healthy lungs (59 samples)
431 from The Cancer Genome Atlas (TCGA) database were downloaded from <http://firebrowse.org>. Spearman's
432 correlation and statistical analysis of mRNA expression in LUAD was performed using the cbiportal co-expression
433 tool (www.cbiportal.org). Pathway Gene Set Enrichment Analysis (GSEA) was performed with dedicated software
434 (<https://www.gsea-msigdb.org/gsea>).

435

436 **ACKNOWLEDGMENTS** We thank all members of the SIGNATHER team at CRCT (Cancer Research Center of Toulouse,
437 INSERM U1037, CNRS ERL5294, UPS, Toulouse, France) for stimulating and thoughtful discussions. We thank David
438 Santamaría, John Hickman, Agnese Cristini and Olivier Sordet for critically reading the manuscript. We thank all
439 members of mice core facilities (CREFRE, UMS006 Inserm, Toulouse) in particular Cédric Baudelin, Amanda Corini,
440 Emilie Sinhlivong, Tristan Chapon, Charlotte Delos, Thi-Lan Huong Huynh and Charlène Lopez for their support and
441 technical assistance. We acknowledge the cytometry/cell-sorting and imaging facilities of the CRCT, in particular
442 Manon Farcé and Laetitia Ligat for their assistance with flow cytometry and microscopy, respectively. We thank
443 Carine Valle and Emeline Sarot from the Genomics and Transcritomics platform of the CRCT for their support and
444 technical assistance, as well as Marie Tosolini from the Bioinformatics platform of the CRCT for the bioinformatics
445 analysis. We thank Géraldine Touriol for the administrative and financial management. **AUTHOR CONTRIBUTIONS**

446 Study design, data interpretation and preparation of the manuscript: SF, CD, RG, AP, JM, OC, GF; Execution of
447 experiments: SF, CD, RG, RA, SP, CT, EC, AC, OC; Computational and statistical analysis: JC, JPV; Writing, review,
448 and/or revision of the manuscript: SF, CD, RG, JPV, AM, AP, JM, OC, GF; Material support: ILM, IF, LPA. **FUNDINGS**
449 This work was supported in part by institutional grants from INSERM, Fondation pour la Recherche Médicale (FRM,
450 équipe labellisée [DEQ20170839117]), Programme de Recherche Translationnelle en Cancérologie (INCa-DGOS,

451 [PRT-K18-048], JM), Fondation Toulouse Cancer Santé (FTCS, OC and JM), Labex TOUCAN (OC), Ligue Nationale
452 Contre le Cancer (LNCC, GF). **CONFLICT OF INTEREST STATEMENT** Part of this study received financial support from
453 Kura Oncology through a sponsored research contract. **DATA AVAILABILITY** RNAseq and scRNAseq raw data will be
454 available upon request through private access and publicly available upon acceptance of the publication.

455

456

457

458

459

460

461

462

463

464

465

466

467

468

469

470

471

472

473

474

475

476

477

478

479

480

481

482

483

484

485

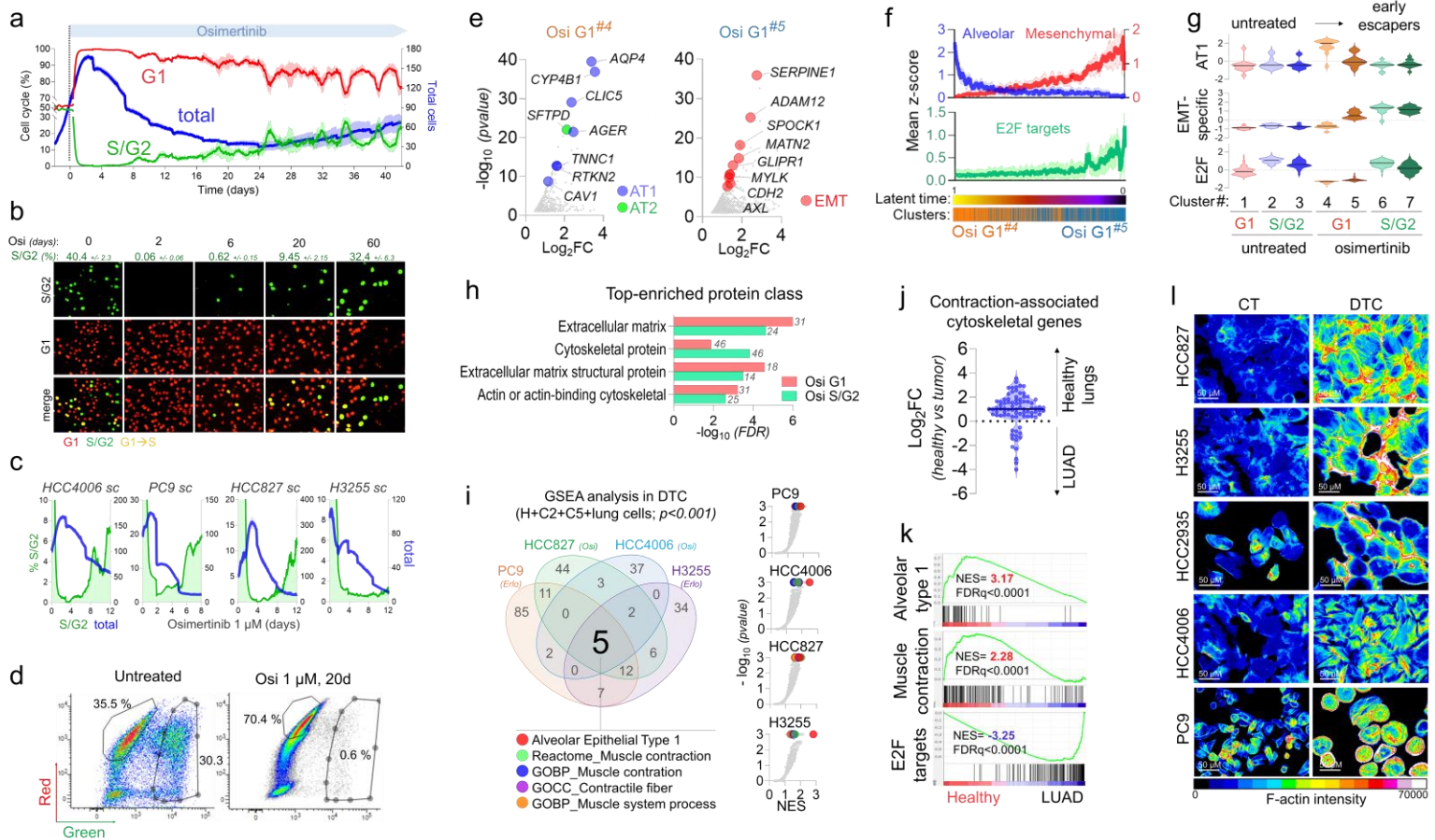


Figure 1: Drug-tolerance is a dynamic state which invariably implicates alveolar differentiation and cytoskeletal remodeling

a: Percentage of total cells (blue), S/G2 (green) or G1 (red) population of HCC4006 subclonal cells during osimertinib treatment (1 μ M).
 b: Representative fluorescence images of S/G2 (green) or G1 (red) HCC4006 subclonal cells during osimertinib treatment (1 μ M).
 c: S/G2 (green) or G1 (red) fractions (%) of PC9, HCC4006, HCC827, HCC2935, H3255 subclonal cells during osimertinib treatment (1 μ M).
 d: Flow cytometry charts of red cells (G1) or green cells (S/G2 or G1-S) of untreated or osimertinib treated (1 μ M, 20 days) HCC4006 subclonal cells sorted for single-cell RNA sequencing experiment. Percentages of each fractions according to total population are specified.
 e: Osimertinib-induced genes overexpressed specifically in G1 cluster 4 vs cluster 5 (left) or in cluster 5 vs cluster 4 (right). AT1 (blue), AT2 (green) or EMT (red)-specific genes are highlighted.
 f: Mean z-score evolution of alveolar (blue), mesenchymal (red) and E2F_target (green) signatures according to latent time cell repartition. Osi-G1 cluster 4 (orange) and cluster 5 (blue) are specified.
 g: Violin plots representing the mean z-score values of alveolar type 1 (AT1), EMT-specific and E2F_target signatures in the different clusters.
 h: Top significantly overrepresented protein classes (pantherdb.org) in osimertinib-treated HCC4006 G1 (red bars) and S/G2 cells (green bars) compared to untreated-G1 and S/G2 populations, respectively (log₂FC>1, p-value<0.05)
 i: Left: Venn diagram comparing the significantly enriched pathways (p<0.001) in erlotinib- or osimertinib-derived drug-tolerant cells. GSEA analysis was performed on differentially expressed genes (p<0.05) obtained by RNAseq in PC9 and H3255 cells were treated with 1 μ M erlotinib for 21 days, HCC827 cells treated with 1 μ M osimertinib for 11 days, and HCC4006 G1-cells treated with osimertinib for 21 days, compared to respective control cells. Right: Volcano plots of the pathways enriched in indicated EGFR-TKi-treated DTC.
 j: Differential expression of the contraction-associated cytoskeletal genes in healthy lungs compared to lung adenocarcinoma using TCGA data.
 k: GSEA analysis of alveolar type 1, muscle-contraction and E2F_targets signatures in healthy lungs compared to lung adenocarcinoma using TCGA data.
 l: Phalloidin F-actin staining of HCC827, H3255, HCC2935, HCC4006 and PC9 control cells or DTC upon osimertinib treatment (1 μ M) (X20 magnification, scale bar = 50 μ M). Images were analyzed by Image J software (filter: 16 colors).

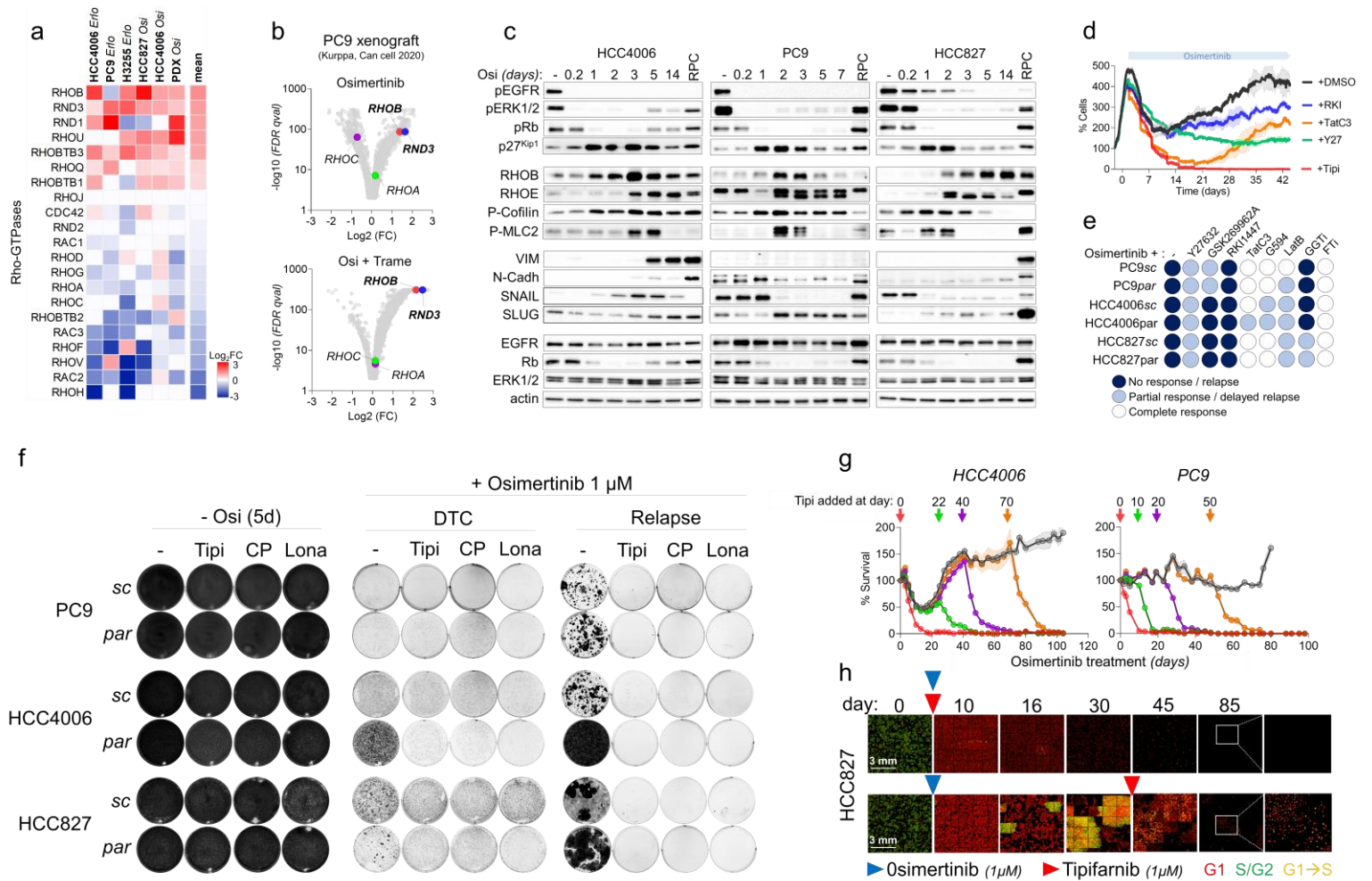


Figure 2: Farnesyltransferase inhibitors prevent resistance to EGFR-TKi *in vitro*

a: Differential mRNA expression of the 21 known Rho-GTPases in DTC generated from erlotinib-treated (HCC4006, PC9, H3255) or osimertinib-treated (HCC827, HCC4006) cells or in a PDX model of EGFR-mutated lung adenocarcinoma (described in Fig. 4).

b: Volcano plot of the differentially expressed genes in osimertinib- (up) or osimertinib+trametinib- (down) treated PC9 xenografts. Data were obtained from a scRNAseq published by Kurppa et al. Cancer Cell 2020).

c: Representative Western Blot of proteins related to EGFR pathway (phospho-EGFR, EGFR, phospho-ERK, ERK), cell contractility (phospho-MLC2, phospho-cofilin), EMT (vimentin, N-cadherin, SNAIL, SLUG), cell cycle (p27Kip1, phospho-RB, RB) and RhoGTPases (RHOB, RHOE) during osimertinib treatment (1 μM) in HCC4006, PC9 and HCC827 subclonal cells. RPC= resistant proliferative clone.

d: Cell survival (%) of HCC4006 parental cells during osimertinib treatment (1 μM) alone or in combination with ROCK inhibitors (RKI, RKI1474 and Y27, Y27632), RHOA/B/C inhibitor (TatC3) or farnesyl-transferase inhibitor (Tipi, tipifarnib).

e: Cell survival of PC9, HCC4006, HCC827 parental and subclonal cells upon osimertinib treatment (1 μM) alone or in combination with ROCK inhibitors (Y27632, GSK269962A, RKI1447), RHOA/B/C inhibitor (TatC3), AKT inhibitor (G594), actin inhibitor (LatB, Latruncunlin B), geranylgeranyltransferase inhibitor (GGTI) or farnesyltransferase inhibitor (Tipi, tipifarnib). Deep blue round refers to no response or relapse, light blue round to partial or delayed response and white round to complete response.

f: Crystal violet staining of clonal and parental PC9, HCC4006 and HCC827 cells treated for 5 days, at DTC state or after relapse with osimertinib (1 μM) alone or in combination with farnesyltransferase inhibitors (tipifarnib 1 μM , Tipi; CP-609.754 1 μM , CP; lonafarnib 10 μM , Lona).

g: Cell survival (%) of HCC4006 and PC9 cells during osimertinib treatment (1 μM) with or without tipifarnib (1 μM) added at indicated timepoints.

h: Images of HCC827 clonal cells upon osimertinib (1 μM) +/- tipifarnib (1 μM). G1 cells are red-fluorescent, S/G2 cells are green-fluorescent and G1-S cells are in yellow. Blue and red arrows represent osimertinib treatment and tipifarnib treatment beginning respectively.

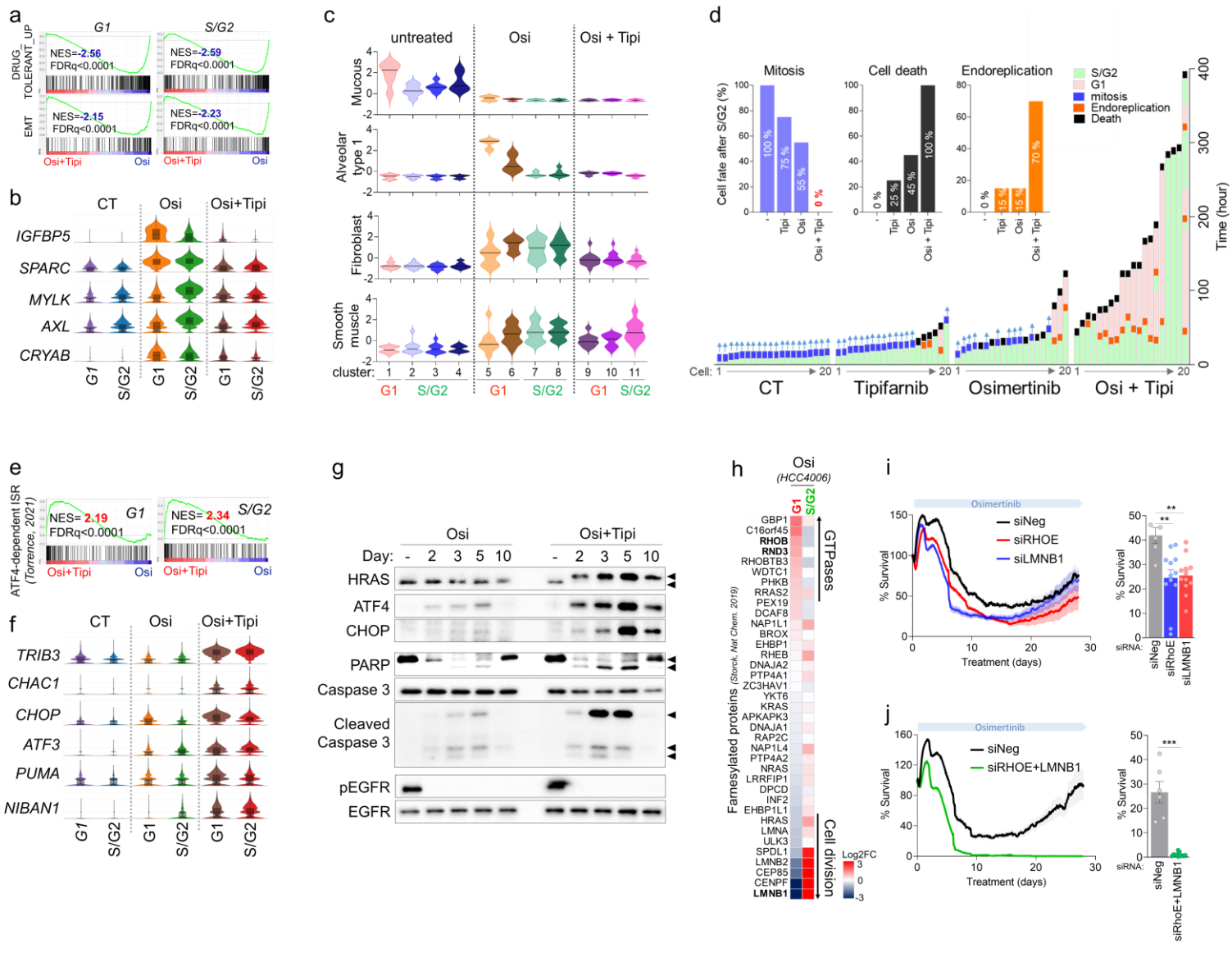


Figure 3: Tipifarnib causes multiple interferences in the adaptive response to osimertinib

a: GSEA analysis of Drug-Tolerant_Up and EMT signatures comparing Osimertinib+Tipifarnib- versus Osimertinib-treated HCC4006 G1 and S/G2 cells.

b: Violin plots representing the Log2 mRNA expression of drug-tolerant and EMT-related genes significantly altered by osimertinib+tipifarnib vs osimertinib treatment.

c: Mean z-score of normal cell type-associated signatures (from Maynard, Nature 202010) significantly regulated by osimertinib and/or osimertinib+tipifarnib treatments.

d: Cell fate after entry to S/G2 of HCC4006 clonal cells treated or not with osimertinib (1µM), tipifarnib (1µM) or the combo. S/G2 cells are in green, G1 cells are in red. Mitosis event are represented in blue, endoreplication in orange and death in black.

e: GSEA analysis of ATF4-dependent Integrated Stress Response (ISR) signature (Torrence, elife 202118) significantly modulated by Osimertinib+Tipifarnib versus Osimertinib treatment

f: Violin plots representing the Log2 mRNA expression of ATF4-regulated genes significantly upregulated by Osimertinib+tipifarnib treatment

g: Protein expression by western blot of proteins related to EGFR pathway (phospho-EGFR, EGFR), farnesyltransferase inhibitor efficacy (HRAS), apoptosis (PARP and caspase-3) and ISR (ATF4, CHOP) on HCC4006 clonal cells treated with osimertinib (1µM) alone or in combination with tipifarnib (1µM).

h: Differential expression of genes coding for farnesylated proteins (Stock et al, Nat Chem, 2019) in osimertinib-treated G1 versus G1-untreated HCC4006 cells or osimertinib-treated S/G2 versus osimertinib-treated G1 cells

i: Cell survival (%) of HCC4006 clonal cells during osimertinib treatment (1µM) and transfected with siRNA control (Neg) or targeting RHOE or LMNB1.

j: Cell survival (%) of HCC4006 clonal cells during osimertinib treatment (1µM) and transfected with siRNA control (Neg) or targeting RHOE and LMNB1.

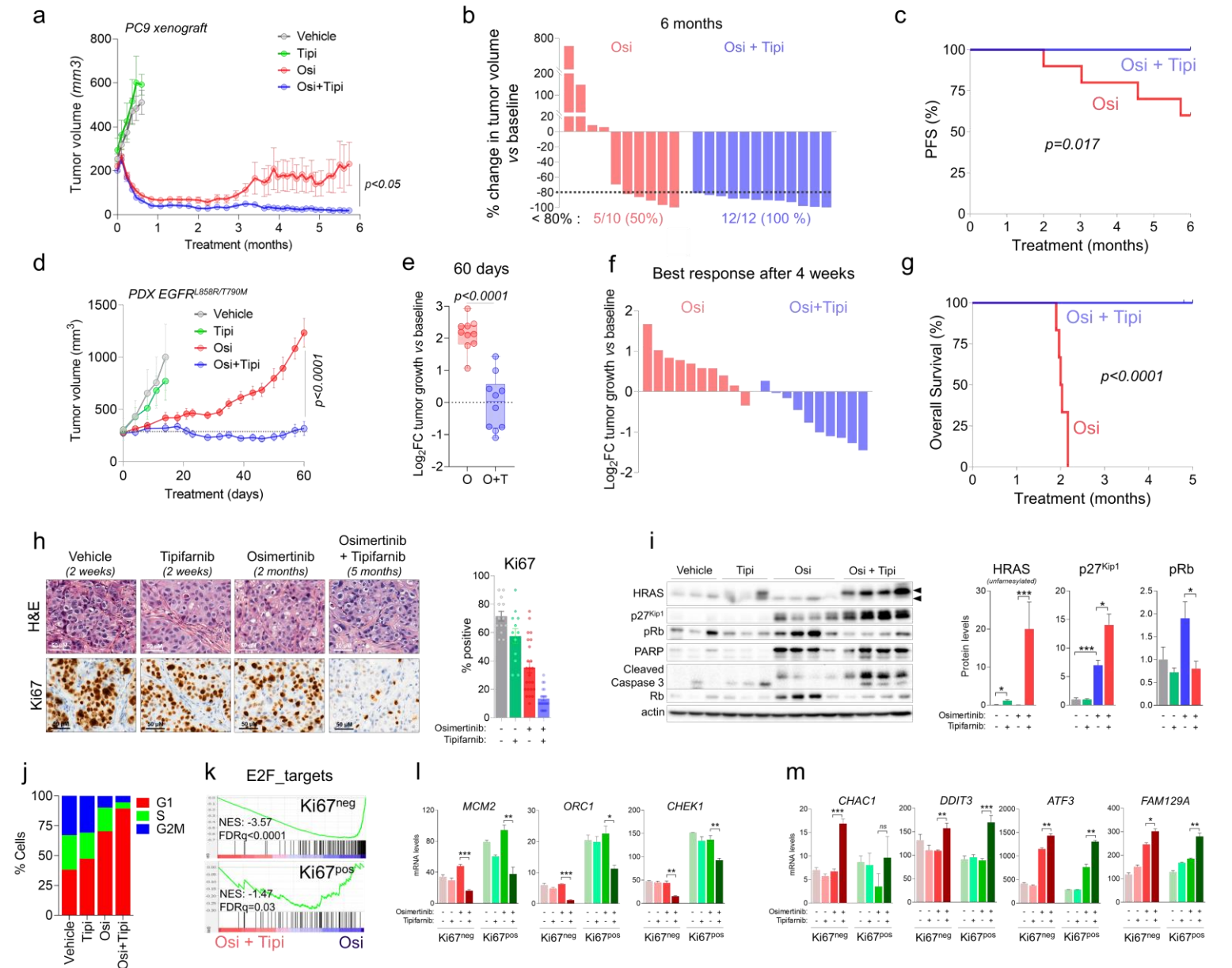


Figure 4: Tipifarnib prevents relapse to osimertinib *in vivo*

a: Mean tumor volume (mm³) of PC9 xenografts treated 5 days/week with vehicle, Tipifarnib (Tipi, 80mg/kg, b.i.d.), Osimertinib (Osi, 5 mg/kg, q.d.), or by the combo (Osi + Tipi). n = 6 tumors in the vehicle and Tipifarnib arms, and n = 10 in the Osimertinib arm and n=12 in the combination arms. Mean ± SEM are shown.

b: Change in tumor volume versus baseline of PC9 xenografts after 6 months of treatment with Osimertinib or a combination of Osimertinib and Tipifarnib.

c: Progression-free survival of mice with PC9 xenografts and treated with Osimertinib or a combination of Osimertinib and Tipifarnib. P-value was determined by log-rank Mantel-Cox test.

d: Mean tumor volume of an PDX model of EGFR^{L858R/T790M} lung adenocarcinoma treated 5 days/week with vehicle, Tipifarnib (Tipi, 80mg/kg, b.i.d.), Osimertinib (Osi, 5 mg/kg, q.d.), or by the combo (Osi + Tipi). The graph is the result of two independent cohorts of mice with a total of n = 4 tumors in the vehicle arm, n = 5 tumors in the Tipifarnib arm and n = 10 tumors in the Osimertinib and combination arms. Mean ± SEM are shown.

e: Log₂ fold change of the PDX growth compared to baseline after 60 days of treatment with Osimertinib or a combination of Osimertinib and Tipifarnib.

f: Log₂ fold change of the PDX growth compared to baseline at the best response from 4 weeks after treatment with Osimertinib or a combination of Osimertinib and Tipifarnib.

g: Overall survival of EGFR-L858R-T790M PDX mice treated with Osimertinib or the combination of Osimertinib and Tipifarnib. The graph is the result of one cohort of mice with n = 6 mice in both arms. P-value was determined by log-rank Mantel-Cox test.

h: Representative images of Hematoxylin and Eosin (H&E) stainings (top) and Ki67 IHC (bottom) from PDX tumors collected after 2 weeks, 2 months and 5 months of treatment with Tipifarnib, Osimertinib or the combination of Osimertinib and Tipifarnib, respectively. Quantification of Ki67 IHC scores for each treatment. Data are representative of 3 to 6 independent tumors. Scale bar = 50µm

i: Immunoblot of lysates from individual PDX harvested after 2 weeks, 2 months and 5 months of treatment with Tipifarnib, Osimertinib or the combination of Osimertinib and Tipifarnib, respectively. Quantification of protein levels of HRAS, p27^{Kip1} and phospho-Rb normalized with actin level. Images represent n = 3–4 independent tumors. Immunoblot was performed once.

j: Proportion of G1, S and G2/M populations determined by the scRNA-seq. All rights reserved. PDX models collected after 2 weeks, 2 months and 5 months of treatment with Tipifarnib, Osimertinib or the combination of Osimertinib and Tipifarnib, respectively.

k: GSEA analysis of the E2F_target signature in Osimertinib+Tipifarnib versus Osimertinib-treated EGFR-L858R-T790M PDX in the Ki67-negative (top) or positive (bottom) cell populations.

l: Mean mRNA expression levels of genes implicated in replication or (m) in ISR, in the different cell populations, determined by scRNAseq. Mean \pm SD are shown.