



**HAL**  
open science

## Measuring Nonapoptotic Caspase Activity with a Transgenic Reporter in Mice

P. Nicholls, Thomas Pack, Nikhil Urs, Sunil Kumar, Yang Zhou, Gabriel Ichim, Joshua Ginzler, Gabor Turu, Evan Calabrese, Wendy Roberts, et al.

► **To cite this version:**

P. Nicholls, Thomas Pack, Nikhil Urs, Sunil Kumar, Yang Zhou, et al.. Measuring Nonapoptotic Caspase Activity with a Transgenic Reporter in Mice. *eNeuro*, 2022, 9 (5), pp.ENEURO.0147-21.2022. 10.1523/ENEURO.0147-21.2022 . hal-04005711

**HAL Id: hal-04005711**

**<https://cnrs.hal.science/hal-04005711v1>**

Submitted on 3 Jul 2023

**HAL** is a multi-disciplinary open access archive for the deposit and dissemination of scientific research documents, whether they are published or not. The documents may come from teaching and research institutions in France or abroad, or from public or private research centers.

L'archive ouverte pluridisciplinaire **HAL**, est destinée au dépôt et à la diffusion de documents scientifiques de niveau recherche, publiés ou non, émanant des établissements d'enseignement et de recherche français ou étrangers, des laboratoires publics ou privés.

## Novel Tools and Methods

# Measuring Nonapoptotic Caspase Activity with a Transgenic Reporter in Mice

 P. J. Nicholls,<sup>1</sup> Thomas F. Pack,<sup>2,3</sup>  Nikhil M. Urs,<sup>2</sup> Sunil Kumar,<sup>1</sup> Yang Zhou,<sup>2</sup> Gabriel Ichim,<sup>10</sup> Joshua D. Ginzel,<sup>2</sup> Gabor Turu,<sup>2</sup> Evan Calabrese,<sup>4,5</sup> Wendy L. Roberts,<sup>2</sup> Ping Fan,<sup>6</sup> Valeriy G. Ostapchenko,<sup>11</sup> Monica S. Guzman Lenis,<sup>11,12</sup> Flavio Beraldo,<sup>11,13</sup> Jiri Hatina,<sup>14</sup>  Vania F. Prado,<sup>11,12,13</sup>  Marco A. M. Prado,<sup>11,12,13</sup> Ivan Spasojevic,<sup>6</sup> Joshua C. Snyder,<sup>2,9</sup> Kafui Dzirasa,<sup>1,4,7</sup> G. Allan Johnson,<sup>4,5,8</sup> and Marc G. Caron<sup>2,6,7,†</sup>

<https://doi.org/10.1523/ENEURO.0147-21.2022>

<sup>1</sup>Department of Psychiatry and Behavioral Sciences, Duke University Medical Center, Durham, NC 27710, <sup>2</sup>Department of Cell Biology, Duke University Medical Center, Durham, NC 27710, <sup>3</sup>Department of Pharmacology and Cancer Biology, Duke University Medical Center, Durham, NC 27710, <sup>4</sup>Department of Biomedical Engineering, Duke University Medical Center, Durham, NC 27710, <sup>5</sup>Center for In Vivo Microscopy, Department of Radiology, Duke University Medical Center, Durham, NC 27710, <sup>6</sup>Department of Medicine, Duke University Medical Center, Durham, NC 27710, <sup>7</sup>Department of Neurobiology, Duke University Medical Center, Durham, NC 27710, <sup>8</sup>Department of Physics, Duke University, Durham, NC 27710, <sup>9</sup>Department of Surgery, Duke University Medical Center, Durham, NC 27710, <sup>10</sup>Center for Research on Cancer in Lyon, University of Lyon, Lyon 69008, France, <sup>11</sup>Robarts Research Institute, University of Western Ontario, London, Ontario N6A 3K7, Canada, <sup>12</sup>Department of Anatomy and Cell Biology, University of Western Ontario, London, Ontario N6A 3K7, Canada, <sup>13</sup>Department of Physiology and Pharmacology, Schulich School of Medicine and Dentistry, University of Western Ontario, London, Ontario N6A 3K7, Canada, and <sup>14</sup>Institute of Biology, Charles University, Plzen CZ-32300, Czech Republic

## Abstract

The protease caspase-3 is a key mediator of apoptotic programmed cell death. But weak or transient caspase activity can contribute to neuronal differentiation, axonal pathfinding, and synaptic long-term depression. Despite the importance of sublethal, or nonapoptotic, caspase activity in neurodevelopment and neural plasticity, there has been no simple method for mapping and quantifying nonapoptotic caspase activity (NACA) in rodent brains. We therefore generated a transgenic mouse expressing a highly sensitive and specific fluorescent reporter of caspase activity, with peak signal localized to the nucleus. As a proof of concept, we first obtained evidence that NACA influences neurophysiology in an amygdalar circuit. Then focusing on the amygdala, we were able to quantify a sex-specific persistent elevation in caspase activity in females after restraint stress. This simple *in vivo* caspase activity reporter will facilitate systems-level studies of apoptotic and nonapoptotic phenomena in behavioral and pathologic models.

**Key words:** caspases; *in vivo* reporter; nonapoptotic; mapping; amygdala; stress; sex differences

## Significance Statement

Caspase-3 is an enzyme that can cause cell death when highly active but can also perform important cellular functions, such as maturation and structural changes, when only weakly or transiently active. Despite the importance of this nonlethal type of caspase activity, there is no straightforward method to measure it in live rodents. We therefore developed mice that have a fluorescent reporter that is sensitive enough to detect nonlethal caspase activity. Surprisingly, we found that weak caspase activity influences the synchrony of neuronal firing across different brain regions. We also observed increased caspase activity in female mice after severe stress. This simple caspase activity reporter can subserve multiple applications in behavior and pathology research.

## Introduction

When caspase-3 is highly active, a proteolytic cascade ensues that typically ends in cell death by apoptosis (Yuan et al., 1993; Unsain and Barker, 2015). Weak or transient caspase-3 activity, however, is nonlethal and may be a key component of neurodevelopment by directing neuronal differentiation (Fernando et al., 2005), axonal pathfinding and branching (Westphal et al., 2010; Campbell and Okamoto, 2013), and synaptic metaplasticity (Chen et al., 2012). In the past several years mounting evidence indicates that, in the adult brain, nonapoptotic caspase activity (NACA) is an important contributor to neuronal plasticity, by driving NMDA receptor-mediated long-term depression (Z. Li et al., 2010; Jiao and Li, 2011). Caspase activity in mature neurons may also underlie dendritic pruning (Ertürk et al., 2014). Uncovering the brain regions that display NACA at baseline and how NACA changes in response to perturbation will enable studies of its role in brain function.

Preclinical studies in cultured neurons (Du et al., 2004) and neonatal (Zhu et al., 2006; Renolleau et al., 2007),

young adult, and aged rodents (Liu et al., 2009, 2011) have revealed sex-dependent differences in cell death pathways. In the context of hypoxia-ischemia, for example, cell death in females depends predominantly on caspase activity, while in males cell death occurs primarily by a caspase-independent mechanism (Zhu et al., 2006; Liu et al., 2009). This may be because of the more pronounced caspase-3 activation seen in females following hypoxia-ischemia and other cytotoxic insults (Du et al., 2004; Liu et al., 2009). Notably, these sex-dependent differences do not rely on estrogen levels or developmental stage (Liu et al., 2009). Although these studies were concerned with apoptotic caspase activity, they motivated us to investigate how sex influences baseline and stress-responsive NACA.

There is currently no tractable method for mapping and quantifying weak and transient caspase activity at cellular resolution throughout the brain. Such a method would enable systems-level studies of the relationship between NACA, neural circuits, and various behavioral and pathologic models. Available transgenic fluorescent reporters of weak caspase activity that do not require reagents are limited to *Drosophila* (Bardet et al., 2008; Tang et al., 2015). In mice, the available caspase reporters rely on substrates for bioluminescence (Fu et al., 2013; Galbán et al., 2013) or  $\beta$ -galactosidase activity (Khanna et al., 2010) which cannot be used for high-resolution studies of fixed tissues. And a FRET-based reporter in mice does not detect NACA (Yamaguchi et al., 2011). It was our goal to generate and validate a reagent-free caspase reporter in mouse brain that would produce a strong nuclear signal with minimal background activity.

Inteins are analogous to introns for proteins (Gogarten et al., 2002). In a process called protein splicing, conserved residues in the amino and carboxy terminals of an intein engage in thioester reactions that lead to the autocatalytic removal of the intein from flanking exteins. At the conclusion of protein splicing, the amino and carboxy terminal exteins are covalently bound to each other, linked by several residues from the ends of the removed intein. In a variant on this scheme, there are split inteins such that the amino and carboxy portions of a split intein recognize each other noncovalently, thereby facilitating the thioester reactions of the protein splicing process, again leading to covalently bound exteins as an end product (Shah and Muir, 2014). Inteins and split inteins are surprisingly widespread, having been identified in the genomes of roughly 50% of archaea and 25% of bacteria, as well as a few species of eukaryotes (Lennon and Belfort, 2017). Several bacterial split inteins have found application in synthetic biology, protein chemistry, and other fields. Of these, the split intein encoded by the *dnaE* gene of the cyanobacterium *Synechocystis* species PCC6803 has been well characterized and used in several contexts (Wu et al., 1998; Evans et al., 2000), including the reconstitution of split Cre recombinase in transgenic mouse brain (Wang et al., 2012). We chose this split intein when designing a caspase activity reporter based on a split version of the fluorophore mCerulean.

In this paper, we describe a novel transgenic reporter of caspase activity in mice. First, we demonstrate the simplicity of detecting apoptotic reporter signal in several models of programmed cell death. Then, to find an optimal brain

Received April 7, 2021; accepted August 23, 2022; First published September 8, 2022.

The authors declare no competing financial interests.

Author contributions: P.J.N., T.F.P., N.M.U., S.K., Y.Z., G.I., J.D.G., G.T., E.C., W.L.R., P.F., V.G.O., M.S.G.L., F.B., J.H., V.F.P., M.A.M.P., I.S., J.C.S., K.D., G.A.J., and M.G.C. designed research; P.J.N., T.F.P., N.M.U., S.K., Y.Z., G.I., J.D.G., G.T., E.C., W.L.R., P.F., V.G.O., M.S.G.L., F.B., J.H., I.S., and K.D. performed research; P.J.N., T.F.P., N.M.U., J.D.G., and E.C. contributed unpublished reagents/analytic tools; P.J.N., T.F.P., S.K., G.I., P.F., V.F.P., M.A.M.P., I.S., J.C.S., K.D., G.A.J., and M.G.C. analyzed data; P.J.N. wrote the paper.

This work was supported by National Institutes of Health Grants 1R21NS081513 (to P.J.N.), 8P41EB015897 (to G.A.J.), and 2R01MH079201 and 5R37MH073853 (to M.G.C.) and by Canadian Institutes of Health Research Grants MOP 93651, 12600, and 89919 (to M.A.M.P.). Support from the Pall Family Foundation and Lennon Family Foundation to MGC is greatly appreciated. Ki determinations were provided by the National Institute of Mental Health's Psychoactive Drug Screening Program, Contract #HHSN-271-2013-00017-C.

Acknowledgments: We thank the following for their assistance and advice: Rainbo Hultman, Benjamin Sachs, Lauren Rochelle, Daniel Urban, Scott Robertson, Jue Fan, Nicole Calakos, Fan Wang, David Piston, Martin Fischer, Francisco Robles Guerrero, Ramona Rodriguez, William Wetsel, Cheryl Bock, Meilang Flowers, Thomas L. Brown, Lauren Burianek, and Scott Soderling. Pharmacokinetic analysis was carried out by the Duke Cancer Institute PK/PD Core Laboratory.

P. J. Nicholls' present address: Sio Gene Therapies, Durham, NC 27709.

T. F. Pack's present address: Sio Gene Therapies, Durham, NC 27709.

N. M. Urs' present address: Department of Pharmacology and Therapeutics, College of Medicine, University of Florida, Gainesville, FL 32611.

G. Turu's present address: Department of Physiology, Faculty of Medicine, Semmelweis University, H-1444 Budapest, Hungary.

E. Calabrese's present address: Department of Radio and Biomedical Imaging, School of Medicine, University of California, San Francisco, CA 94143.

M. S. Guzman Lenis's present address: University Health Network, Toronto, Ontario M5G 2C4, Canada.

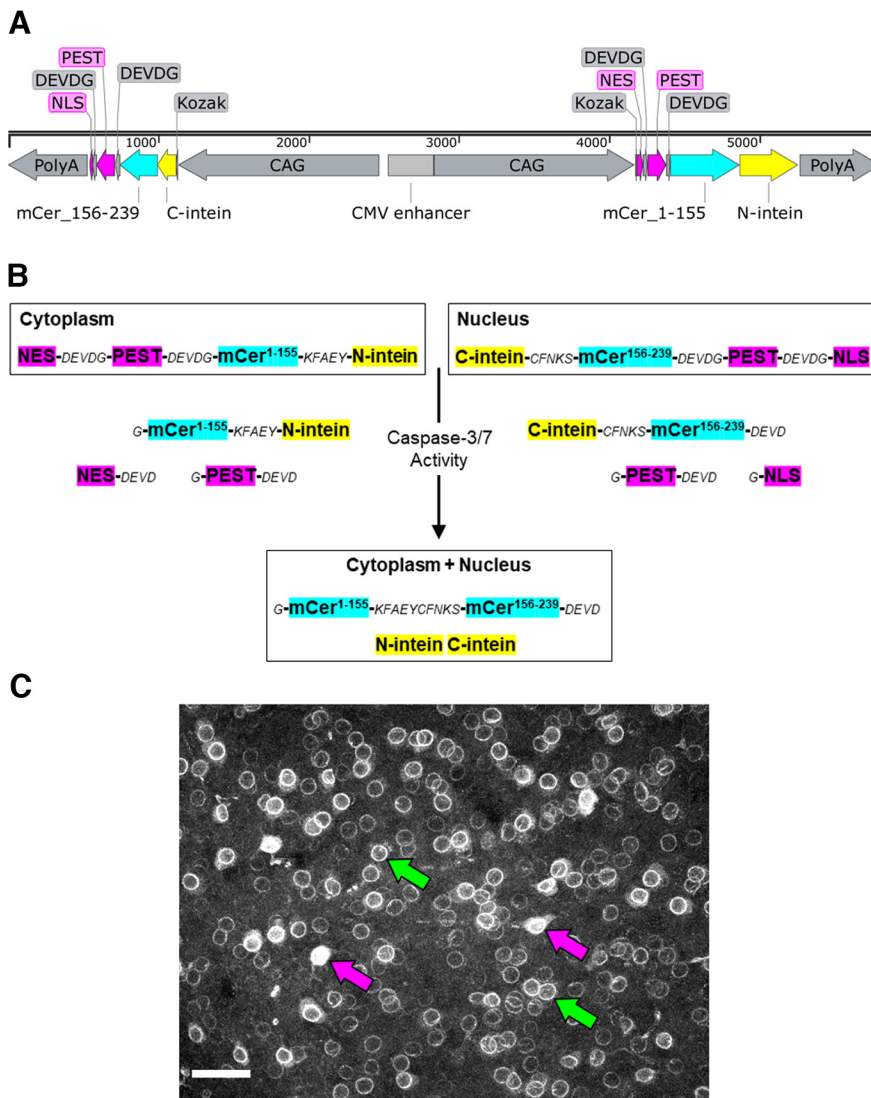
<sup>†</sup>Deceased, Apr. 25, 2022.

Correspondence should be addressed to P. J. Nicholls at [peter.nicholls@duke.edu](mailto:peter.nicholls@duke.edu).

<https://doi.org/10.1523/ENEURO.0147-21.2022>

Copyright © 2022 Nicholls et al.

This is an open-access article distributed under the terms of the Creative Commons Attribution 4.0 International license, which permits unrestricted use, distribution and reproduction in any medium provided that the original work is properly attributed.



**Figure 1.** Design of a transgenic caspase-3/7 activity reporter. **A**, Vector map. From left, Poly A, polyadenylation sequence; NLS, nuclear localization sequence; DEVDG, caspase cleavage site; PEST, protein degradation sequence; mCer, mCerulean fluorophore; C-, N-intein, carboxy-terminal and amino-terminal bacterial inteins; Kozak, initiation sequence; CAG, CAGGS promoter; NES, nuclear export sequence. **B**, Schematic of caspase-mediated and intein-mediated bimolecular fluorescence complementation. KFAEY, CFNKS, intein linkers; other abbreviations as in **A**. **C**, Examples of weak reporter signal at nuclear envelope (green arrows) and brighter reporter signal filling nucleus and soma (magenta arrows). Basolateral amygdala; scale bar, 50  $\mu$ m. See also Table 2.

region for studying NACA, we examine the relationship between caspase activity and neurophysiology in three brain areas. Finally, to demonstrate the utility of our reporter in measuring NACA *in vivo*, we focus on neurons in the anterior basolateral amygdala and find sex-dependent baseline and stress-induced differences in caspase activity. Taken together, our results suggest that NACA may underlie pathological responses to severe behavioral stress.

## Materials and Methods

### Contact for reagent and resource sharing

Further information and requests for resources and reagents should be directed to and will be fulfilled by the Lead Contact, P. J. Nicholls.

## Experimental model and subject details

### Mice

All procedures involving animals were conducted in accordance with National Institutes of Health standards as approved by the Duke University Institutional Animal Care and Use Committee. The caspase activity reporter transgene (annotated sequence available on request) was synthesized and inserted into pCAGEN by GenScript. Pronuclear microinjection of the transgene into C57BL/6NHsd one-cell embryos was performed by Duke's Transgenic Mouse Facility. Reporter mice used in experiments were male and female, primarily 8–10 weeks old but ranging from embryonic day (E)17 to four months old, homozygous on a C57BL/6 or mixed background, and drug-naive and test-naive. Other mice were postnatal



day (P)46 male caspase reporter hemizygous, floxed *Arpc3* homozygous, and *PCP2-Cre* wild-type or hemizygous. Finally, mice for the neurophysiology and pharmacokinetics experiments were two- to three-month-old male C57BL/6J from The Jackson Laboratory. Mice were housed in a barrier facility on a 12/12 h light/dark cycle with species-specific heat and humidity and fed a standard laboratory diet with food and water *ad libitum*. Mice were group housed two to five per microisolator cage on corn cob bedding, and cages were changed every two weeks. For the *ex vivo*, neurophysiology, and pharmacokinetics experiments, cage mates were allocated randomly to experimental groups. For the control aBLA NACA quantification, male and female cages were alternated in the order of perfusion; the first half of samples perfused were randomized separately from the second half of samples perfused; the randomization was double-blind; and the first half of samples were imaged in their new order followed by the second half in their new order. For the restraint aBLA NACA quantification, alternate mice within a cage were restrained; the order of perfusion alternated between control and restraint within cages and male and female between cages; and the randomization and order of imaging were as in the control quantification.

#### Primary cultures

Primary cultures of hippocampal neurons were obtained from caspase reporter pregnant females on day E17 as previously described (Beraldo et al., 2010, 2013). Briefly, mouse hippocampal neurons of both sexes were harvested at day 17 of embryonic development (E17) and maintained in dishes coated with poly-L-lysine (Sigma-Aldrich) for 7 d in Neurobasal medium (Invitrogen) with 2% B-27 supplement (Invitrogen). Half of the medium was replaced every 2–3 d. All procedures were conducted in accordance with approved animal use protocols at the University of Western Ontario (2016/103) following Canadian Council of Animal Care and National Institutes of Health guidelines.

#### Method details

##### Real-time PCR

Quantitative PCR for genotyping was performed with SYBR Select Master Mix (Life Technologies), 400 nm primers (synthesized by Integrated DNA Technologies), and a LightCycler (Roche). Later genotyping was performed on a StepOnePlus system (Applied Biosystems) with PowerUp SYBR Green Master Mix (Thermo Fisher Scientific #A25742) and 500 nm primers (IDT). Genotyping primers: CMV enhancer forward, CCCACTTGGCAGTAC ATCAA; CMV enhancer reverse, GCCAAGTAGGAAAGT CCCATAA. Control primers: Actb intron forward, GCCGT ATTAGGTCCATCTTGAG; Actb intron reverse, GGTTT GGACAAAGACCCAGA.

##### Microscopy

We used a Zeiss Axio Zoom.V16; an Incucyte Zoom system (Sartorius); an Olympus confocal FV1000; a Zeiss LSM 880; and a Zeiss LSM 510 with an automated stage, Coherent Chameleon laser, and halogen lamp for all other

microscopy. In two-color images, green represents shorter wavelengths and magenta longer wavelengths. Images were processed in ImageJ. For subtracted images, the magenta channel was linearly subtracted from the green channel, to remove autofluorescence and apoptotic reporter signal. Only linear window-level adjustments were made to images; and images within a figure panel were adjusted as a single image, except for the TUNEL stain. In some figures, a linear unbiased MATLAB script (available on request) was used to correct for a stable shading abnormality in our multiphoton system. Clarification was performed as previously described (Hama et al., 2011).

##### Immunocytochemistry

U2OS cells were seeded onto 35 × 10-mm tissue culture dishes (Genesee) pretreated with poly-D-lysine at a density of  $5 \times 10^5$  cells. The next day, cells were transfected with 2.5 μg of Apo plasmid using Lipofectamine 2000 (Thermo Fisher Scientific). The media was replaced with 2 ml Opti-MEM (Thermo Fisher Scientific) 5 h after transfection. After 40 h, cells were washed with PBS, fixed for 10 min in formalin at room temperature, and incubated overnight at 4°C in 1:500 cleaved caspase-3 antibody (Cell Signaling Technology #9661). The following day, cells were washed with PBS and incubated for 2 h at room temperature in 1:500 Alexa Fluor 568 (Thermo Fisher Scientific #A11011). After final washes in PBS, the cells were immediately imaged on an Axio Zoom.V16 (Zeiss).

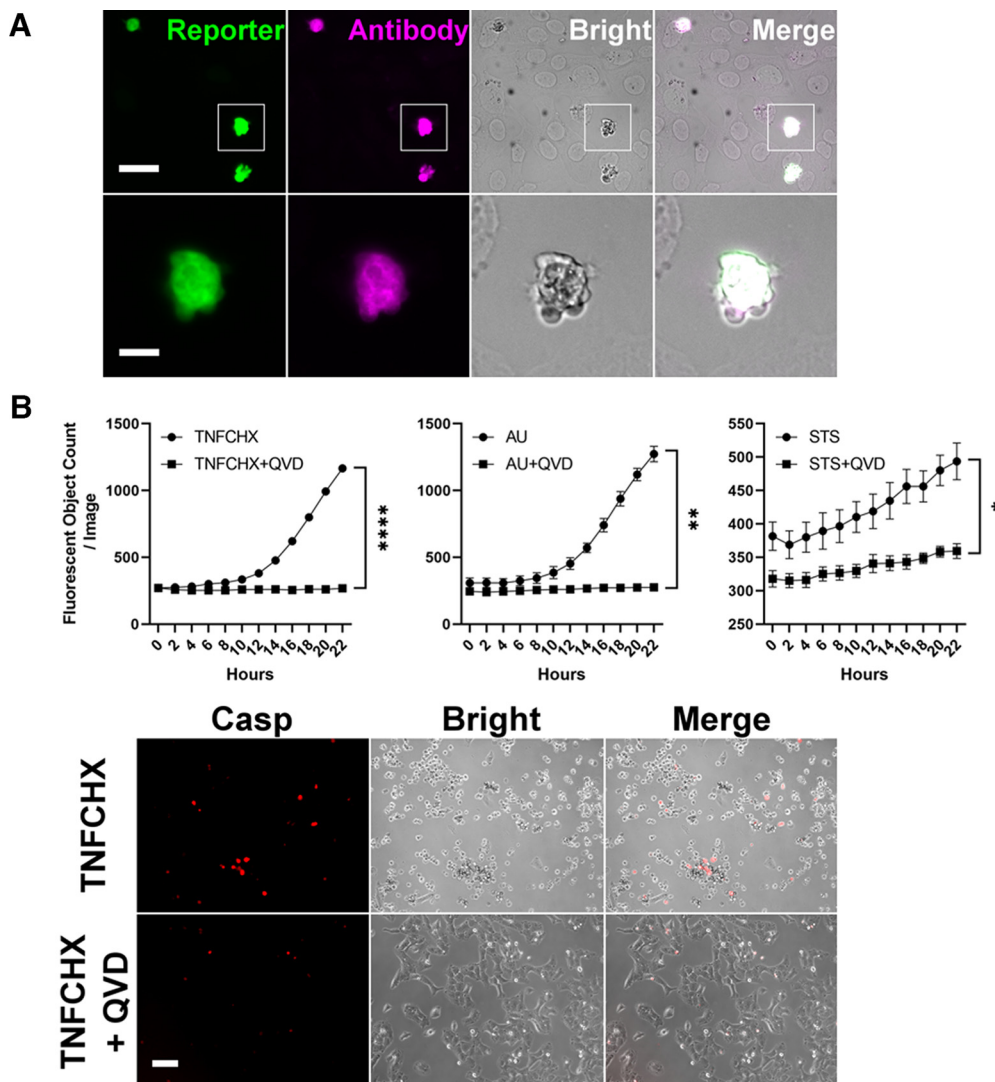
##### Live cell imaging

A375 melanoma cells were seeded onto 10-cm dishes at a density of  $1.5 \times 10^6$ , transfected 24 h later with 10 μg of Apo plasmid using Lipofectamine 2000, and another 24 h later reseeded into 48-well plates at  $5 \times 10^4$  cells per well. After another 24 h, cells were treated with apoptotic stimuli; then plates were imaged every 2 h using an Incucyte Zoom system (Sartorius) to quantify the number of fluorescent cells per field of view.

Separately, A375 melanoma cells were transiently transfected with the Apo plasmid, then plated 24 h later in coated dishes (Ibidi), and then treated another 24 h later with hTNFα (20 ng/ml) + cycloheximide (1 μg/ml) alone or with the pan-caspase inhibitor Q-VD-OPH (20 μM) for 24 h. Images were captured by epifluorescence microscopy and transillumination.

##### Hippocampal cultures

On DIV 7, hippocampal neurons were treated with either vehicle or staurosporine (100 nM). Cells were imaged at 3, 12, and 24 h after treatment, and caspase-3 activity was measured using fluorescence from the mCerulean reporter. Fluorescence of neuronal cultures from four independent embryos of either sex was quantified using an FV1000 Olympus confocal microscope (excitation 405 nm and emission 470–485 nm). Integrated fluorescence was divided by total cell number and normalized to control cells that were not subjected to staurosporine, using ImageJ software (NIH).



**Figure 2.** Detection of apoptosis *in vitro*. **A**, In U2OS cells, transiently transfected caspase activity reporter (green) colocalized with cleaved caspase-3 antibody (magenta) in morphologically apoptotic cells (gray). Scale bar, 40  $\mu\text{m}$  (above), 10  $\mu\text{m}$  (below). **B**, Above, A375 melanoma cells transfected with caspase activity reporter then treated with apoptotic stimuli showed an increase in fluorescent signal that was abolished by the caspase inhibitor Q-VD-Oph (QVD, 20  $\mu\text{M}$ ). TNFCHX, hTNF $\alpha$  20 ng/ml + cycloheximide 1  $\mu\text{g/ml}$ ; AU, ABT-736 10  $\mu\text{M}$  + UMI-77 10  $\mu\text{M}$ ; STS, staurosporine 1  $\mu\text{M}$ . Two-way RM-ANOVA (treatment: left,  $F_{(1,4)} = 529.5$ ; middle,  $F_{(1,4)} = 47.88$ ; right,  $F_{(1,4)} = 10.78$ ); mean  $\pm$  SEM;  $n = 3$ . \* $p < 0.05$ , \*\* $p < 0.01$ , \*\*\*\* $p < 0.0001$ . Below, Example of *in vitro* conditions. Casp, caspase activity reporter. Scale bar, 100  $\mu\text{m}$ . See also Table 2.

#### 6-Hydroxydopamine microinjections

In mice under constant isoflurane anesthesia, 1  $\mu\text{l}$  of 6-hydroxydopamine (3 mg/ml) dissolved in saline containing 0.02% ascorbic acid was injected at coordinates AP =  $-1.2$ , ML =  $-1.2$ , and DV =  $-4.75$  with a Hamilton syringe fitted with a pulled glass capillary needle at 0.4  $\mu\text{l/min}$  using a Nanojet syringe pump. Fourteen hours after injection, mice were transcardially perfused with 4% PFA, and brains were fixed overnight in 4% PFA at 4°C. The ApopTag TUNEL stain kit (Millipore #S7165) was used.

#### Middle cerebral artery occlusion (MCAO)

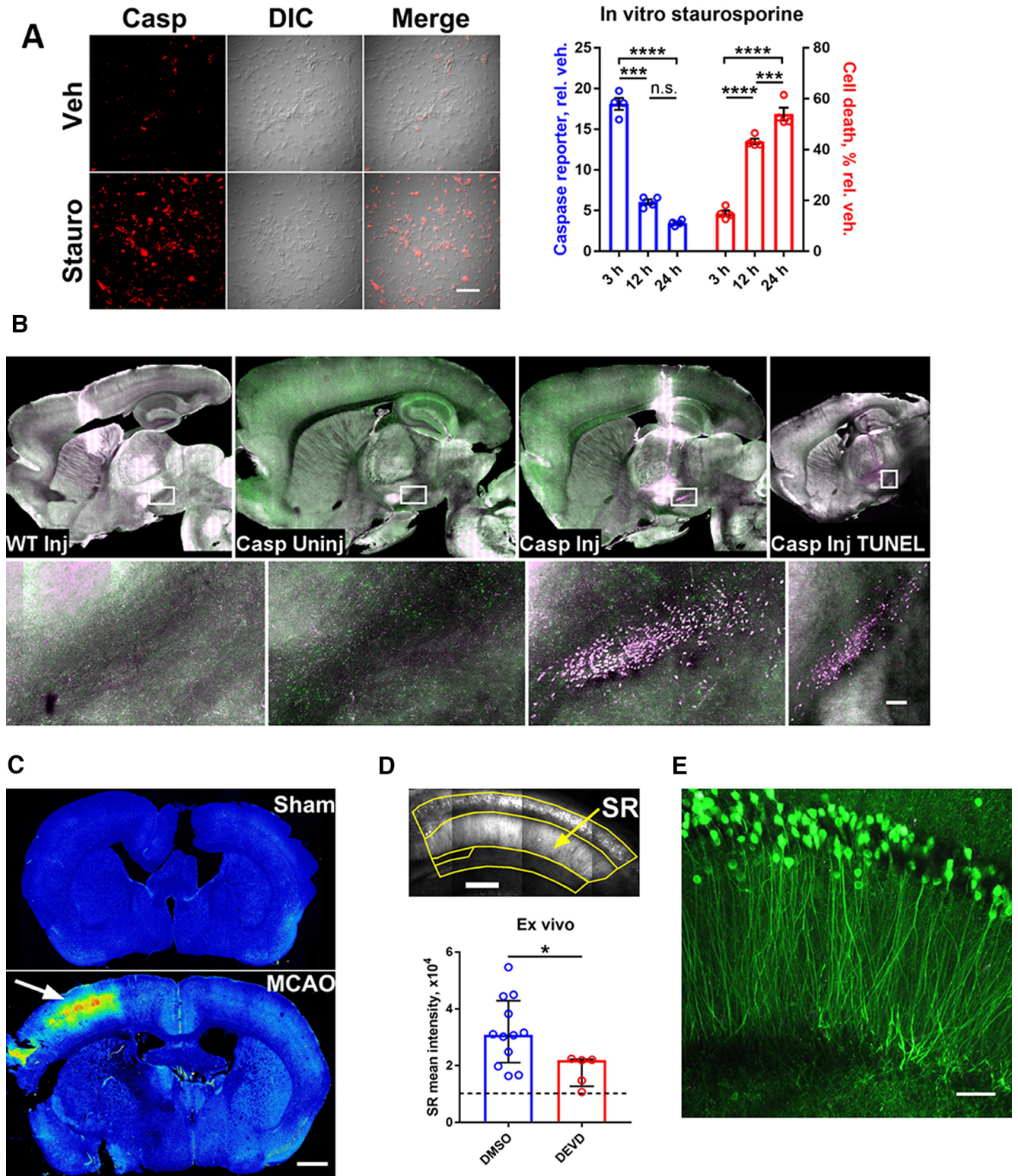
Three- to four-month-old male caspase reporter homozygotes were subjected to 2-h MCAO or were sham-operated. After a 24-h recovery, mice were perfused with 4% PFA in PBS. Perfused brains were incubated overnight at

4°C, after which 50- $\mu\text{m}$ -thick coronal sections were prepared using a vibratome. Slices were immediately mounted with PBS on glass slides and imaged using an Olympus confocal FV1000 equipped with a 10 $\times$ /0.4 NA objective.

#### Acute hippocampal specimens

For *ex vivo* specimens, three- to four-week-old mice were anesthetized at time 0 and transcardially perfused with chilled oxygenated artificial CSF (in mM: 119 NaCl, 2.5 KCl, 26 NaHCO<sub>3</sub>, 1.25 NaH<sub>2</sub>PO<sub>4</sub>, 11 glucose, 0.5 CaCl<sub>2</sub>, and 1.3 MgSO<sub>4</sub>); then, a vibratome-cut hemisphere was maintained in oxygenated artificial CSF with 2 mM CaCl<sub>2</sub> during multiphoton scanning. Z-DEVD-FMK was purchased from Millipore (#264156).





**Figure 3.** Validation of a transgenic caspase-3/7 activity reporter. **A**, Representative data (left) and time course (right) of caspase reporter intensity and cell death in primary hippocampal neurons treated with 100 nM staurosporine. Two-way RM-ANOVA with Tukey's multiple comparisons test (Reporter  $\times$  Time  $F_{(2,12)} = 216.7$ ); mean  $\pm$  SEM;  $n=4$ . n.s., not significant,  $***p < 0.001$ ,  $****p < 0.0001$ . Scale bar, 100  $\mu$ m. **B**, Apoptotic reporter signal (magenta) in the substantia nigra pars compacta ipsilateral to a 6-hydroxydopamine injection (Casp Inj), but not contralateral to the injection (Casp Uninj) or in injected wild-type (WT Inj), and confirmed by TUNEL stain (Casp Inj TUNEL). Green (Casp Uninj, Casp Inj) represents nonapoptotic reporter signal. Scale bar, 100  $\mu$ m. **C**, Caspase reporter distribution after MCAO (arrow) versus sham. Red-blue is high-low signal intensity. Scale bar, 1 mm. **D**,

*continued*

Attenuation of reporter signal by a caspase inhibitor (3.7  $\mu\text{M}$  Z-DEVD-FMK) in acute hippocampal slices. SR, stratum radiatum. Dashed line denotes threshold of detection. Mann–Whitney test ( $U=9$ ); median  $\pm$  IQR;  $n=12$  DMSO, 5 DEVD. \* $p < 0.05$ . Scale bar, 200  $\mu\text{m}$ . **E**, Hippocampal nonapoptotic reporter signal is predominantly in neurons of the stratum pyramidale. Acute hippocampal slice. Scale bar, 50  $\mu\text{m}$ . See also Table 2.

### Immunohistochemistry

Tissue stains were performed with 1:500 primary antibody and 1:500 Alexa Fluor 594 secondary antibody (Thermo Fisher Scientific), both overnight at 4°C. Primary antibodies were: MEF2D (Millipore #AB2263), Parvalbumin (Swant #PVG213), GFAP (Cell Signaling #3670), GAD67 (Millipore #MAB5406). The ApopTag TUNEL stain kit (Millipore) was used.

### Apoptotic versus nonapoptotic signal intensity

Based on the Cerulean emission spectrum available at <http://tsienlab.ucsd.edu/Documents.htm> and our observation that the 16-bit intensity mean of apoptotic reporter signal is 65,535 in the 570–640 nm channel (0.06133 of total spectrum), and our calculation of 34,555.6 for the mean 16-bit intensity mean in the 470–550 nm channel (0.7745 of total spectrum) for nonapoptotic signal in the 23 samples of one replicate of the restraint experiment, we found  $(65,535/0.06133)/(34,555.6/0.7745) = 23.9$ . And since this value is limited by the maximal 16-bit intensity mean of 65,535, the true quotient of apoptotic to nonapoptotic signal intensity would be  $\geq 24$ .

### mRNA fluorescence in situ hybridization

Advanced Cell Diagnostics RNAscope Multiplex Fluorescent kit (323100) was used to detect mCerulean mRNA expression in fixed frozen sections. Sections were prepared and pretreated before hybridization and signal development of the mCerulean probe (ACD Bio 1108841-C1) following the Multiplex Fluorescent kit user manual. Probe labeling was done with Opal 570 dye (PerkinElmer, Inc NEL801001KT). Tiled images were acquired using a Zeiss LSM 880 with 10 $\times$  and 40 $\times$  objectives.

### Measuring aBLA NACA

For the stress intervention, approximately eight-week-old male and female caspase reporter homozygotes housed two to five per cage were transferred to a nearby experimental procedure room within their barrier facility, where they acclimated overnight. At  $\sim 7$  A.M. the next day, half of the mice were randomly selected and inserted into 50-ml tubes that had 0.25-in holes for breathing. For cages with an odd number of mice, selection was designed so that the total number of mice in each of the 4 experimental groups would be nearly equivalent. Immediately after a mouse was placed in a tube, it was returned to its cage where it stayed with its restrained

and unrestrained cage mates. All mice were deprived of food and water for the next 24 h. Mice were observed, and tubes were rolled periodically to assess responsiveness. No mice became unresponsive during the test. Twenty-four hours later, restrained mice were released from their tubes, washed briefly in a room-temperature water bath, and returned to their cages with their unrestrained cage mates. For the next 9 d, all mice had access to food and water *ad libitum*. The released mice were again observed for distress or unresponsiveness, which were not detected during this test. Within a few hours of being released, restrained mice were indistinguishable from unrestrained mice on gross inspection. After 9 d, all mice were transferred to a separate facility for transcardial perfusion.

Mice were perfused in order, such that restrained mice alternated with unrestrained mice and male cages alternated with female cages. Immediately after being weighed, each mouse was administered a mixture of ketamine 100 mg/kg, xylazine 10 mg/kg, and heparin 5000 U/kg in saline and given 10–15 min to attain a surgical plane of anesthesia. Mice were observed and tested by toe pinch for inadequate anesthesia, which was not noted in this experiment. No mice were given an additional dose of anesthetic. After 10–15 min of anesthesia, each mouse was pinned to a board in a chemical fume hood and rapidly dissected to reveal the liver and heart. Then the apex of the left ventricle was pierced with a 25-gauge needle attached to a 25-ml syringe containing 25 ml of 1:1 10% neutral buffered formalin: PBS plus 100  $\mu\text{l}$  of 1000 U/ml heparin. Immediately, the solution was forced into the circulation at a moderate pace, and the right atrium was snipped as it expanded. All 25 ml of formalin/PBS/heparin was forced through the circulation at a steady pace within 1–2 min. Each mouse was assessed for paleness of liver and stiffness of body; one mouse out of the 42 used in the stress experiment was determined to have a poor perfusion based on these criteria and was later excluded from data analysis before the randomization was unblinded.

Immediately after perfusion, the skin and mandible were carefully dissected from the skull, such that the skull was not compressed or dropped during the procedure. The skull was carefully placed in a 50 ml tube containing 25 ml of the perfusate solution, and each tube was placed on its side in a box on a rotator at  $\sim 60$  rpm in a 4°C cold room for 48 h. During this time, numbers on

**Table 1: Stereotaxic Coordinates**

Brain area	AP coordinates (mm)	ML coordinates (mm)	DV coordinates (mm)
PrL	+1.8	$\pm 0.25$	-1.75
Amyg	-1.46	$\pm 2.85$	-3.9
DHipp	-2.4	$\pm 1.63$	-1.25



**Table 2: Imaging parameters**

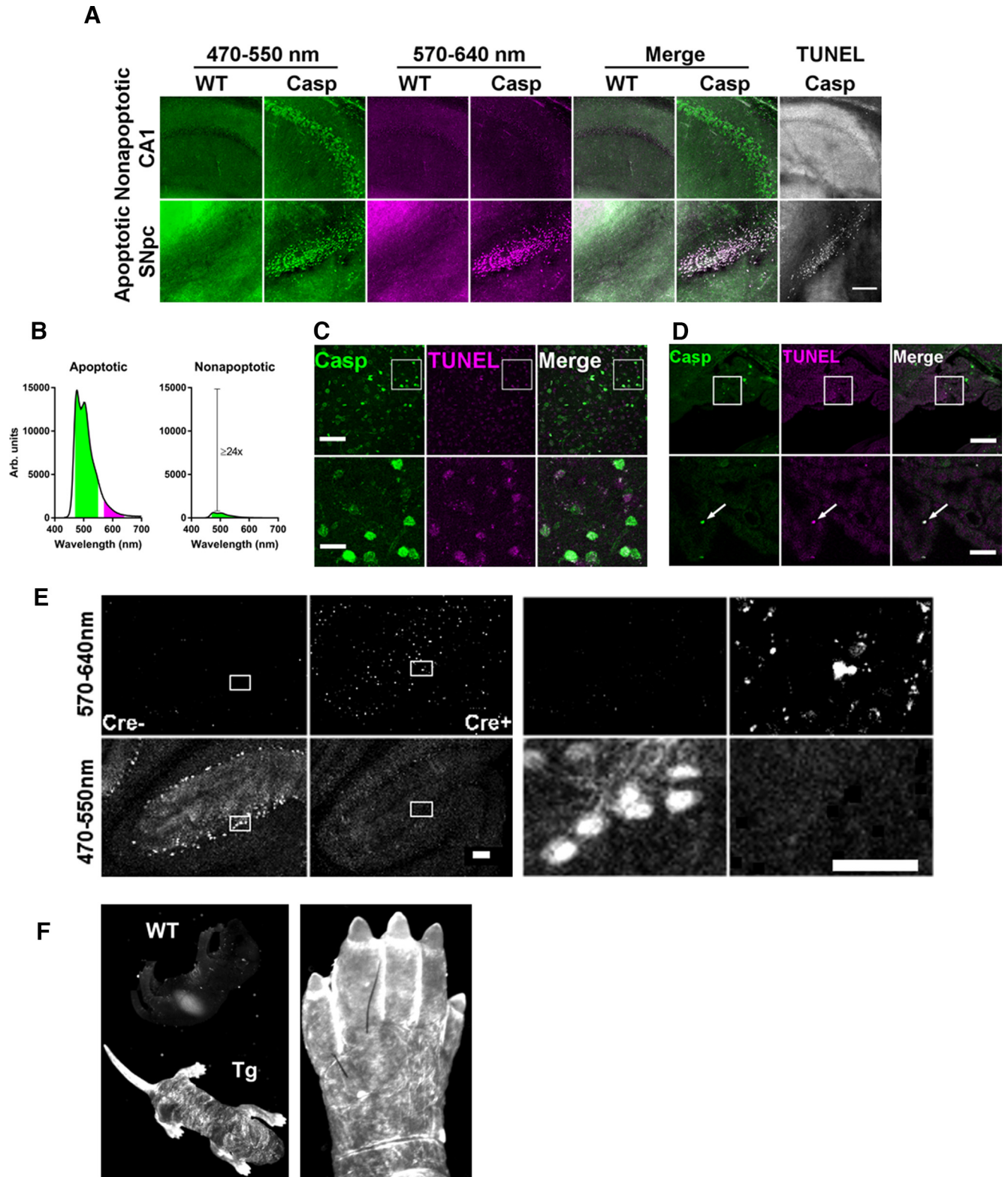
Figure	Specimen	Pixel Size		Slices	Projection	Channels	Excitation (nm)	Emission (nm)	System
		( $\mu\text{m}$ )	Z interval ( $\mu\text{m}$ )						
1C	Fixed	0.41	2	76	Maximum	Subtracted	858	470–550, 570–640	Ti:sapphire laser, 20 $\times$ /1.0 NA
2A	Fixed	0.18	0	1	N/A	Single, merged	424–448 (green), 538–562 (magenta), LED (gray)	460–500 (green), 570–640 (magenta), transmitted light (gray)	Mercury arc lamp and LED, 2.3 $\times$ /0.57 NA
2B	<i>In vitro</i>	0.64	0	1	N/A	Single, merged	450–490 (red), LED (gray)	500–550 (red), transmitted light (gray)	Mercury arc lamp and LED, 10 $\times$ /0.3 NA
3A	<i>In vitro</i>	0.58	0	1	N/A	Single, merged	405 (red), 488 (gray)	430–470 (red), transmitted light (gray)	Diode laser (red), Ar laser (gray), 10 $\times$ /0.4 NA
3B, left 3	Clarified	3.29	20	51	Maximum	Merged	858	470–550, 570–640	Ti:sapphire laser, 20 $\times$ /1.0 NA
3B, TUNEL	Declarified	3.29	20	11	Maximum	Merged	1000	470–550, 570–640	Ti:sapphire laser, 20 $\times$ /1.0 NA
3C	Fixed	2.49	0	1	N/A	Single	458	480–495	Ar laser, 10 $\times$ /0.4 NA
3D	Acute slice	0.82	10	15	Sum	Subtracted	858	470–550, 570–640	Ti:sapphire laser, 20 $\times$ /1.0 NA
3E	Acute slice	0.2	2	21	Maximum	Merged	858	470–550, 570–640	Ti:sapphire laser, 20 $\times$ /1.0 NA
4A, left 6	Clarified	3.29	20	51	Maximum	Single, merged	858	470–550, 570–640	Ti:sapphire laser, 20 $\times$ /1.0 NA
4A, TUNEL	Declarified	3.29	20	11	Maximum	Merged	1000	470–550, 570–640	Ti:sapphire laser, 20 $\times$ /1.0 NA
4C	Fixed	0.82	5	41	Maximum	Single, merged	858	470–550, 570–640	Ti:sapphire laser, 20 $\times$ /1.0 NA
4D	Fixed	0.82	5	41	Maximum	Single, merged	858	470–550, 570–640	Ti:sapphire laser, 20 $\times$ /1.0 NA
4E	Fixed	0.82	10	21	Maximum	Single (row 1), subtracted (row 2)	858	470–550, 570–640	Ti:sapphire laser, 20 $\times$ /1.0 NA
4F, left	<i>In vivo</i>	9.29	0	1	N/A	Single	424–448	460–500	Mercury arc lamp, 1 $\times$ /0.25 NA
4F, right	<i>In vivo</i>	9.29	0	1	N/A	Single	424–448	460–500	Mercury arc lamp, 1 $\times$ /0.25 NA
5A	Clarified	3.29	20	51	Maximum	Merged	858	460–500, 520–550	Ti:sapphire laser, 20 $\times$ /1.0 NA
5B	Fixed	2.27	0	1	N/A	Single	450–490	500–550	Mercury arc lamp, 2.3 $\times$ /0.57 NA
5C	Fixed	3.29	20	14	Maximum	Merged	858	470–550, 570–640	Ti:sapphire laser, 20 $\times$ /1.0 NA
5D	Fixed	0.26	2	12	Maximum	Single, merged	405 (gray), 561 (magenta)	415–470 (gray), 570–607 (magenta)	Diode (gray), DPSS (magenta), 40 $\times$ /1.2 NA
7A	Fixed	0.82	5	51	Maximum	Single, merged	858	470–550 (green), 570–640 (magenta)	Ti:sapphire laser, 20 $\times$ /1.0 NA
7B	Fixed	0.82	5	17 (col 1), 12 (col 2), 3 (col 3)	Maximum	Single, merged	858	470–550 (green), 570–640 (magenta)	Ti:sapphire laser, 20 $\times$ /1.0 NA
7D	Fixed	0.55	5	51	Maximum	Subtracted	858	470–550, 570–640	Ti:sapphire laser, 20 $\times$ /1.0 NA

Related to Figures 1–5 and 7.

the tubes were replaced by letters in a random order by a person blind to the numbering system. The letter assignments of the numbers were known only by this individual, and the information was shared (i.e., the double-blind was broken) only after the completion of data analysis. After the tubes had been in the cold room for 2 d, brains were carefully extracted from skulls and placed in PBS. Brains were then cut into 200- $\mu\text{m}$  coronal sections in PBS on a vibratome under dim room light. Sections corresponding to the aBLA were transferred to individual wells in a 24-well plate containing 1 ml of PBS/1% Triton X-100 per well. Plates were stored overnight in the dark in a 4°C cold room. The next day, sections were examined in plates by brief halogen transillumination on a dissecting microscope, and the ideal section for aBLA imaging was determined for each mouse in a blinded manner. Plates were then returned to the dark in a 4°C cold room for overnight storage.

The next day, three sections were mounted per gelatin-coated slide, with 150- $\mu\text{m}$  square coverslips Scotch Magic-taped to both ends supporting a 170- $\mu\text{m}$  coverslip again secured by a single layer of Scotch Magic tape. Sections were kept wet with PBS/1% Triton X-100. Each

slide was Krazy-glued to the bottom of a 10-cm tissue culture dish which was then filled with 20 ml of PBS/1% Triton X-100 and placed in the dark at room temperature. Samples were transported to a multiphoton microscope, and an additional 20 ml of PBS/1% Triton X-100 was added to each plate. Then a single 2  $\times$  2 tiled image centered on the predetermined ideal aBLA was obtained for each specimen. Multiphoton scans were analyzed with Imlaris (Bitplane) to quantify the reporter signal in each nucleus using the Spots function with the following parameters: estimated diameter = 15  $\mu\text{m}$ , background subtraction = true, “quality” above 4000. These parameters were determined by trial and error during preliminary experiments. The Intensity Sum was found for each nucleus and the mean Intensity Sum was calculated for each aBLA. This entire experiment was replicated, with 19 mice in the first round and 23 mice in the second round. As mentioned previously, when the data were plotted, one sample in the second round had a mean intensity sum >2.5 SD greater than the mean for all 42 samples; this one poorly perfused sample was excluded from the analysis. For each round of the replication, the double-blind was broken only after the data analysis was complete.



**Figure 4.** Separation of apoptotic and nonapoptotic reporter signal. **A**, Separation of nonapoptotic (above) from apoptotic (below) reporter signal by comparing short-wavelength (green) and long-wavelength (magenta) emission. Data are the same experiment as Figure 3B. Scale bar, 200  $\mu$ m. **B**, Quantitative comparison of apoptotic and nonapoptotic reporter signal in short-wavelength (green) and long-wavelength (magenta) channels, derived from data used for Figure 7D (see Materials and Methods). **C**, Lack of colocalization between nonapoptotic reporter signal (green) and TUNEL stain (magenta) in the basolateral amygdala. Scale bar, 100  $\mu$ m (above) and 25  $\mu$ m (below). **D**, Colocalization of reporter signal (green) with TUNEL stain (magenta) in apoptotic epithelial cells of the choroid plexus. Scale bar, 100  $\mu$ m (above) and 25  $\mu$ m (below). **E**, Separation of apoptotic (row 1) from nonapoptotic (row 2) reporter

continued

signal in Purkinje cells of *Arpc3* conditional knock-out mice, with and without Cre recombination. Scale bar, 100  $\mu\text{m}$  (left) and 50  $\mu\text{m}$  (right). **F**, Caspase reporter signal is present in shedding skin of a transgenic P0 mouse (left, Tg) and in apoptotic webbing between its toes (right). Weak signal in wild-type (WT) P0 mouse is autofluorescence in the stomach. See also Table 2.

For the control male-female comparison, the protocol was the same as above except there was no stress intervention.

#### Pharmacokinetics

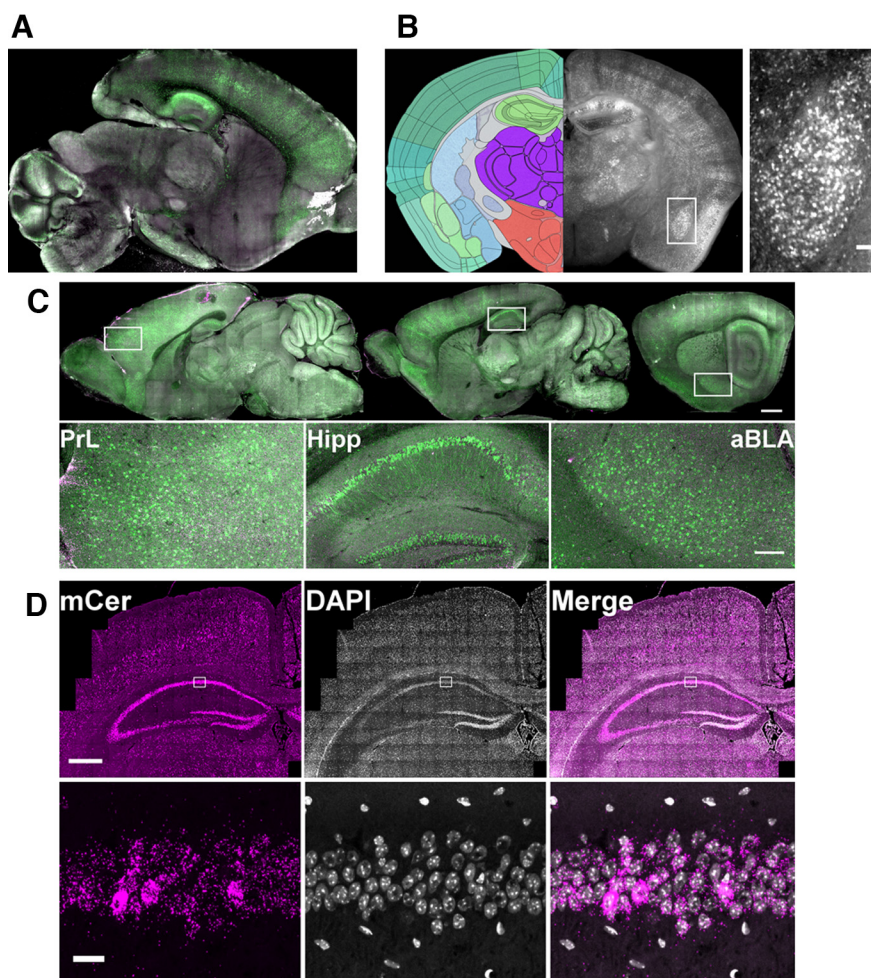
##### Liquid chromatography-tandem mass spectrometry (LC-MS/MS) analysis.

**Sample preparation.** Aliquots of 10  $\mu\text{l}$  of plasma or 100- $\mu\text{l}$  brain tissue homogenate [1 part tissue (g) + 2 parts water (ml)] were mixed with 10  $\mu\text{l}$  of 100 nM Q-DEVD-OPh (internal standard) and 500  $\mu\text{l}$  of deionized water. After liquid-liquid extraction (LLE) of analytes by 1 ml of dichloromethane, the lower layer was removed and 800  $\mu\text{l}$  evaporated under a gentle stream of nitrogen. The residue was reconstituted in 100  $\mu\text{l}$  of 70% mobile phase A/30% acetonitrile (see

below); 5  $\mu\text{l}$  (plasma) or 50  $\mu\text{l}$  (brain homogenate) was injected into LC-MS/MS system.

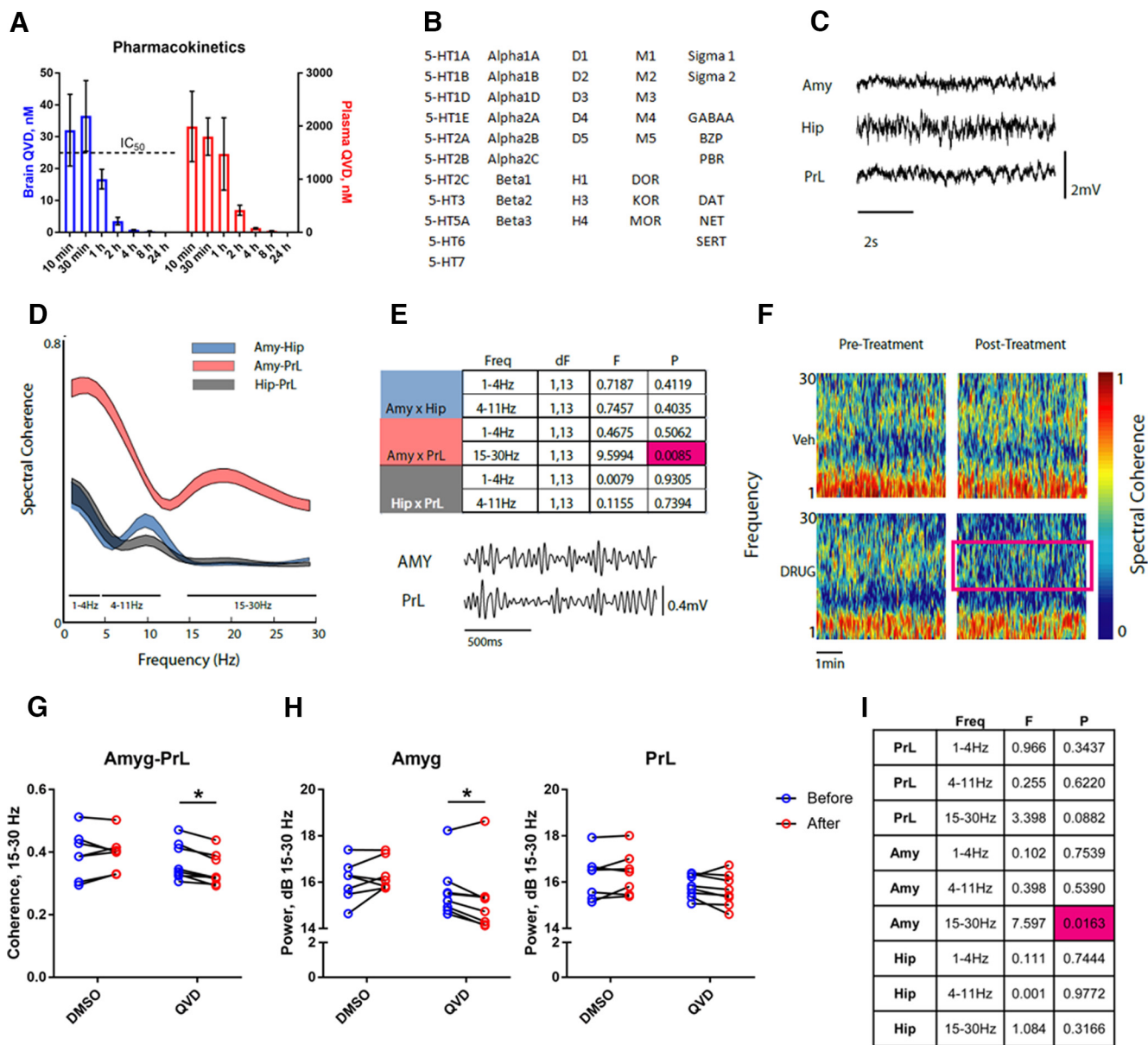
**LC conditions.** Shimadzu 20A series liquid chromatography system; column: Agilent, Eclipse Plus C8, 3  $\times$  50 mm, 1.8- $\mu\text{m}$  particle size, at 45°C; mobile phase A: 98:2 H<sub>2</sub>O:acetonitrile (0.1% formic acid); mobile phase B: acetonitrile; elution gradient: 0–1 min 0–95% B, 1–1.5 min 95% B, 1.5–1.7 min 95–0% B; run time: 4 min.

**ESI-MS/MS conditions.** AB/SCIEX API 4000 QTrap tandem-mass spectrometer; positive mode electrospray (e.g., declustering potential, temperature, gas flow) and mass spectrometer (parent/daughter ions, quadrupole potential) parameters were optimized by direct infusion of pure analytes into the ESI-LC/MS system. MRM



**Figure 5.** Regional and cellular location of nonapoptotic reporter signal. **A**, Nonapoptotic reporter signal (green) in a clarified sagittal section of P22 brain. **B**, Nonapoptotic reporter signal in a coronal section of P44 brain (right). Left atlas tracing image credit: Allen Institute (Lein et al., 2007). Inset, Anterior basolateral amygdala. Scale bar, 100  $\mu\text{m}$ . **C**, Nonapoptotic signal (green) is elevated in pre-limbic cortex (PrL), hippocampus (Hipp), and anterior basolateral amygdala (aBLA). Scale bar, 1 mm (above) and 200  $\mu\text{m}$  (below). **D**, RNA *in situ* hybridization against mCerulean (mCer, magenta). In the insets, note lack of colocalization with DAPI signal outside of the pyramidal cell layer. Scale bar, 500  $\mu\text{m}$  (above) and 20  $\mu\text{m}$  (below). See also Table 2.





**Figure 6.** NACA contributes to functional connectivity in a stress-associated amygdalar circuit. **A**, Pharmacokinetics of 5 mg/kg QVD-OPH in mouse brain and plasma after intraperitoneal injection. Mean  $\pm$  SEM; three to five mice per time point. **B**, Receptors and transporters screened for interaction with QVD-OPH. **C**, Representative traces of LFPs recorded from amygdala (Amy), hippocampus (Hip), and prelimbic cortex (PrL) in a freely behaving mouse. **D**, Spectral coherence between three area pairs (Amy-Hip, Amy-PrL, and Hip-PrL). Data are presented as 95% confidence intervals; 15 mice. **E**, Table of spectral coherence differences across functional connectivity bands depicted in **D**, and representative  $\beta$  (15–30 Hz) frequency traces. Two-way RM-ANOVA with Box-Cox transform; magenta highlights significant value. **F**, Representative spectral coherence data between basal amygdala and prelimbic cortex. Magenta box shows decreased coherence after caspase inhibitor treatment. **G**, Reduced functional connectivity between basal amygdala and prelimbic cortex after caspase inhibitor treatment (QVD). Two-way RM-ANOVA with Sidak’s multiple comparisons test (Drug  $\times$  Time  $F_{(1,13)} = 6.594$ ). **H**, Decreased LFP power after QVD treatment in basal amygdala (left), but not in prelimbic cortex (right). Two-way RM-ANOVA with uncorrected Fisher’s LSD (Drug  $\times$  Time: left,  $F_{(1,13)} = 6.811$ ; right,  $F_{(1,13)} = 3.343$ ). **I**, Table of spectral power differences. Two-way RM-ANOVA with Box-Cox transform; magenta highlights significant value. **D**, **E**, **G**–**I**,  $n = 7$  DMSO, 8 QVD; \* $p < 0.05$ .

transitions (m/z units) monitored for quantification: Q-VD-OPH (Cayman Chemical, catalog #15260) 514.0/226.6 and Q-DEVD-OPH (internal standard) 800.3/256.5. Calibration samples in 0.38–1000 nM (plasma) and 0.5–61.3 nM (brain tissue) ranges were prepared by adding

known amounts of pure Q-VD-OPH into plasma or brain tissue homogenate and were analyzed along with study samples. Linear response was observed in the concentration ranges measured ( $r = 0.9997$  and  $0.9984$ ) and the low limits of quantification (LLOQ) were 0.38

nM and 0.5 nM ( $\pm 80\%$  accuracy) in plasma and brain tissue, respectively.

### Binding

NIMH's Psychoactive Drug Screening Program (Besnard et al., 2012) determined the binding affinities of the receptors and transporters listed.

### Neurophysiology

**Chronic multicircuit electrode implants.** All mice used in this study were two- to four-month-old male C57BL/6J from The Jackson Laboratory. Mice were group housed (three to five animals per cage) in a climate-controlled facility for rodents maintained on a 12/12 h light/dark cycle and fed with food and water *ad libitum*. Electrodes were arranged in bundles and implanted as previously described (Dzirasa et al., 2013). Briefly, mice were anesthetized using isoflurane and placed in a stereotaxic frame. The isoflurane/oxygen flow rate was maintained at  $>1.5\%$  saturation level and adjusted as needed to ensure full anesthesia as determined by tail-pinch response during the entire duration of surgery. Ground screws were placed in the skull above the cerebellum and the anterior cranium. HML coated tungsten wires were arranged in bundles and micro-wires were implanted into mice. All electrodes were referenced to the ground wire connected to the ground screws in the cranium. Electrode bundles were implanted as in Table 1 (all coordinates are measured from bregma).

#### Neurophysiological recordings.

Acute drug treatment and brain network function. After two to three weeks of recovery from surgery, all mice were subjected to neurophysiological recordings. For 7 d, all mice were habituated to the handling required for connecting cables and performing saline injections. During the habituation period all mice were taken to the behavior room in their home cage and manually connected to the recording cables; after 15 min of recovery from handling, mice were given 20 min in the cage followed by a saline injection and another 60 min in the cage. After 7 d of habituation all mice were connected to the recording cables for the multichannel Cerebus acquisition system (Blackrock Microsystems Inc.). Following 15 min of recovery from handling while connecting the recording cables, brain activities as local field potential (LFPs; bandpass filtered at 0.3–250 Hz) were recorded and stored at 1000 Hz. LFP activity was recorded for 20 min while mice were in the cage before the saline/drug/DMSO injections. Behavioral data with automated tracking was also acquired (Neuromotive, Blackrock Microsystems Inc.). Data were analyzed using custom-written MATLAB scripts.

Brain network function before, during, and after acute drug treatment. Following 7 d of habituation, all mice were subjected to neurophysiological recordings for 3 d as follows. First day, all mice were injected with saline. Second day, eight and seven mice were injected with drug or DMSO, respectively. Third day, all mice were injected with saline. All mice were recorded in their cage for 20 min before injections. Data were collected and stored for further analysis.

**Statistical analysis.** For all mice, 20 min of home cage brain activity was compared with 20 min of brain activity following saline or drug/DMSO treatment. Four LFP channels for each structure were pseudorandomly chosen for analysis. LFP cross-structural coherence was calculated from the LFP pairs used for LFP oscillatory power analysis with the MATLAB (MathWorks) `mscohere` function at a 1-s sliding window with a 1-s step.

LFPs and coherence activity were averaged for mice in the 6 frequencies that demonstrated bands of increased connectivity for 20 min:  $\delta$  1–4 Hz (Amy-Hip, Amy-PrL, and Hip-PrL),  $\theta$  4–11 Hz (Amy-Hip and Hip-PrL), and  $\beta$  15–30 Hz (PrL-Hip). The LFP power and coherence activity data were averaged across the recording session. Data were compared before and after treatment in the two groups using a repeated-measures (RM)-ANOVA with Box-Cox transformation, followed by a Wilcoxon sign-rank test with false discovery rate correction.

### Quantification and statistical analysis

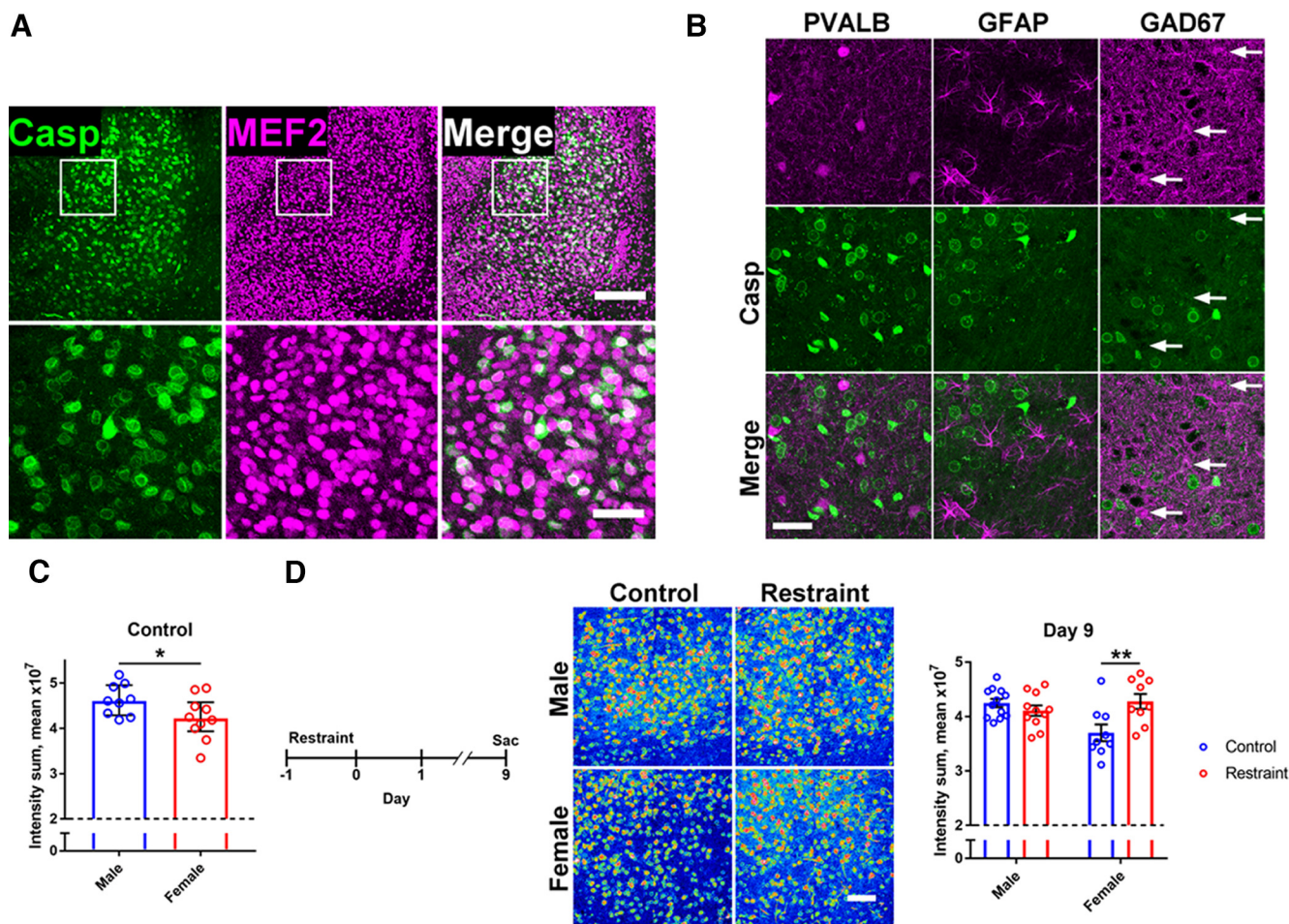
Data analysis was performed with Microsoft Excel, Imaris (Bitplane), and MATLAB; and statistical analysis was done with GraphPad Prism 7. All statistical details can be found in the figure legends and figures;  $p < 0.05$  was the threshold of significance. Because of a poor perfusion, one data point in the restraint experiment was  $>2.5$  SD greater than the mean for all 42 samples and was excluded from the analysis before unblinding.

## Results

We designed a bimolecular fluorescence complementation reporter of caspase activity that comprises four elements intended to maximize the signal-to-noise ratio: CAG promoters, split inteins, PEST sequences, and localization signals (Fig. 1A,B). Bidirectional CAG promoters provide strong, ubiquitous expression (Niwa et al., 1991; Okabe et al., 1997) of each half of the mCerulean reporter (Rizzo et al., 2004). Split inteins further boost the signal by enabling covalent reconstitution of mCerulean from the two nonfluorescent halves (Wang et al., 2012). To minimize background signal, we designed these halves to be kept separate and continually degraded. This baseline state holds until active caspases cleave off the localization signals (Güttler et al., 2010) and PEST sequences (X. Li et al., 1998) by cutting canonical caspase cleavage sites (McStay et al., 2008) present between the mCerulean, localization, and PEST sequences. The liberated, stabilized mCerulean halves can then join via inteins and fluoresce, typically near the nucleus (Fig. 1C). This reporter construct was introduced into the C57BL/6 mouse genome by pronuclear microinjection, yielding at least 24 copies in homozygotes according to qPCR. This line was bred onto a mixed background to increase the size and frequency of litters. After more than 10 years of breeding, the copy number remained stable.

Apoptosis produces a strong signal *in vivo* and *in vitro*. Although the reporter is expected to produce background signal in mitotic cells, since only the PEST sequences would reduce nonspecific signal when the nuclear envelope disassembles, there is nevertheless substantial and





**Figure 7.** NACA, the amygdala, and behavioral stress. **A**, Colocalization of reporter signal (Casp, green) with the neuronal marker myocyte enhancer factor 2 (MEF2, magenta) in basolateral amygdala. Scale bar, 200  $\mu$ m (above) and 50  $\mu$ m (below). **B**, Lack of colocalization of reporter signal (Casp, green) with (all magenta): parvalbumin (PVALB), glial fibrillary acidic protein (GFAP), and glutamic acid decarboxylase 67 kDa (GAD67). White arrows indicate cells with elevated antibody staining. Scale bar, 50  $\mu$ m. **C**, Reduced baseline NACA in female mice. Dashed line represents threshold of detection. Mann–Whitney test ( $U=20$ ); median  $\pm$  IQR;  $n=9$  M, 10 F. **D**, Left, Time course of the experiment. Middle, Representative caspase reporter intensity data (red-blue, high-low intensity). Right, Sex-specific increase in NACA 9d after restraint stress. Dashed line denotes threshold of detection. Two-way ANOVA with Sidak’s multiple comparisons test (Sex  $\times$  Stress  $F_{(1,37)}=9.931$ ); mean  $\pm$  SEM;  $n=12$  M. Cont., 11 M. Rest., 9 F Cont., 9 F Rest. from two independent experiments. Scale bar, 100  $\mu$ m. \* $p < 0.05$ , \*\* $p < 0.01$ . See also Table 2.

significant separation of fluorescent signal between apoptotic and nonapoptotic cultured cells transiently transfected with the Apo plasmid (Fig. 2A,B). As for postmitotic cells, application of 100 nM staurosporine to primary hippocampal cultures from transgenic mice caused a robust increase in signal that preceded cell death (Fig. 3A). We caused *in vivo* apoptosis by injecting 6-hydroxydopamine into the medial forebrain bundle (He et al., 2000) and observed bright reporter signal and TUNEL-positive cells in the substantia nigra pars compacta (Fig. 3B). We also induced apoptosis *in vivo* with MCAO (Beraldo et al., 2013) and found heightened cortical signal ipsilateral to the lesion (Fig. 3C). In addition, we verified that a portion of reporter signal represents NACA by blocking its increase in acute hippocampal slices with a caspase inhibitor (Fig. 3D; Caserta et al., 2003; Yang et al., 2004). Incidentally, in the hippocampus, NACA was mostly limited to neurons in the pyramidal layer (Fig. 3E).

Because of the extreme brightness of reporter signal during apoptosis, we could measure it in the red portion of the spectrum (570–640 nm) although mCerulean emits primarily in the cyan range (470–550 nm; Table 2; Rizzo et al., 2004). Thus, it is simple to separate apoptotic (570–640 nm) from nonapoptotic or background (470–550 nm only) signal (see Materials and Methods, Apoptotic versus nonapoptotic signal intensity; Fig. 4B). We confirmed that the prevalent baseline signal (Fig. 4A, top row) was nonapoptotic since TUNEL stain was negative for the brightest cells (Fig. 4C), despite being positive for shrunken epithelial cells in choroid plexus (Fig. 4D). Likewise, bright signal was observed in the cerebellum of one-month-old *Arpc3* knock-out mice, which demonstrate ataxia and loss of Purkinje cells at this age (Fig. 4E; I.H. Kim et al., 2013). Of note, reporter signal is evident in shedding skin and between the toes of P0 pups (Fig. 4F).



We further characterized the nonapoptotic signal, or NACA, in whole-brain scans using different imaging modalities (see Table 2). NACA was widespread and especially prominent in the amygdala, hippocampus, cortex, and Purkinje cells (Fig. 5A–C). Importantly, *in situ* hybridization showed a similar pattern of mCerulean expression (Fig. 5D), suggesting that a portion of baseline NACA is because of nonspecific background reporter signal. Therefore, bringing the above findings together, we have generated a transgenic reporter of caspase activity that can differentiate apoptotic from nonapoptotic activity for neuronal mapping studies throughout the brain.

To determine which brain regions may have functionally relevant NACA, we measured the effect of a caspase inhibitor on *in vivo* neurophysiology. We first determined that the inhibitor Q-VD-OPh reaches  $IC_{50}$  levels (Caserta et al., 2003) in brain when administered intraperitoneally at 5 mg/kg (Fig. 6A) and shows no off-target activity at potential psychoactive targets at these concentrations (Fig. 6B). Comparing multielectrode recordings of LFPs (Dzirasa et al., 2013) in the basal amygdala, dorsal hippocampus, and prelimbic cortex 24 h before treatment and 24 h after treatment (Fig. 6C–E), we detected a reduction in 15- to 30-Hz functional connectivity between the amygdala and prelimbic cortex (Fig. 6F,G) and a specific reduction in 15- to 30-Hz amplitude in the amygdala (Fig. 6H,I). Hence, NACA may play an important role in neuronal function in the aBLA.

Because of the importance of the aBLA in behavioral stress (Roosendaal et al., 2009; J. Kim et al., 2016, 2017), we tested whether NACA was related to stress responses in the amygdala. We first attempted to determine the cell type responsible for the majority of nonapoptotic reporter signal in the amygdala. Our immunohistological assays suggest that neurons, likely excitatory principal neurons, are the primary source of NACA-related signal in the aBLA (Fig. 7A,B; Neely et al., 2009). Next, we noted that there was a baseline difference in NACA levels between males and females (Fig. 7C) and therefore studied both sexes concurrently in a recently reported stress paradigm (Chu et al., 2016). Nine days after a 24-h bout of restraint stress, we unexpectedly found a persistent increase in aBLA NACA only in females (Fig. 7D). Therefore, NACA may be a key component of stress responsiveness in the amygdala, especially in females.

## Discussion

We designed a transgenic fluorescent reporter sensitive and specific enough to detect NACA as well as caspase-mediated apoptosis in mouse brain. Because of the logarithmic increase in caspase activity during apoptosis (Z. Li et al., 2010), it was possible to separate long-wavelength apoptotic signal from short-wavelength nonapoptotic signal. We obtained evidence of a causal relationship between baseline NACA and neural activity by measuring functional connectivity in unstressed mice treated with a caspase inhibitor. Caspase inhibition caused a reduction in functional connectivity between the basal amygdala and prelimbic cortex, along with reduced 15- to 30-Hz power in the amygdala. Finally, we characterized NACA in

the aBLA by relating it to stress responsiveness. We uncovered a sex-specific effect of stress on NACA: 9 d after prolonged restraint stress, NACA was elevated only in female mice. Together, these results demonstrate the utility of our caspase reporter mouse and the potential importance of NACA in studies of neural function and stress.

Our primary aim was to design a transgenic reporter that would enable mapping of all caspase activity across the brain using multiphoton and other forms of microscopy. Consequently, our reporter contains several design elements subserving this goal that in other contexts might constitute limitations or shortcomings. (1) There is no internal control, such as a contrasting, constitutively expressed fluorescent protein (Yamaguchi et al., 2011), because multiphoton absorption spectra typically overlap (Drobizhev et al., 2011), and any subsequent emission overlap from a bright control would impair the potentially weak signal of the reporter. (2) The reporter does not indicate the subcellular location of caspase activity, since, to facilitate mapping and cellwise quantification, we wanted peak signal to center on the nucleus regardless of the source of caspase activity. (3) Reporter signal is not specifically targeted to the nucleus because fluorescence in the soma can demonstrate shrinkage during apoptosis. (4) The cyan fluorophore overlaps the autofluorescence profile of neural tissue (Billinton and Knight, 2001). This design element enables crossing to other reporter strains, such as calcium sensor mice, which use green or red fluorescent proteins. In addition, the tail-end red emission of our mCerulean reporter during apoptosis can be detected by multiphoton microscopy, unlike the near-infrared tail-end emission of a red fluorophore, thereby facilitating separation of nonapoptotic from apoptotic signal. (5) The reconstituted reporter has a long half-life, probably >1 d (Corish and Tyler-Smith, 1999), since a destabilized fluorescent protein would reduce our chances of detecting transient, weak caspase activity. (6) Our system is not controlled by Cre or other recombinases because this would limit genomic copy number to one, or perhaps two, which would constrain reporter signal output and make detection of weak caspase activity less likely. (7) Likewise, the insertion site of our reporter construct is unknown, since we generated the mouse by pronuclear microinjection. But this random insertion enabled us to reach a homozygous copy number of at least 24, according to quantitative PCR, which has been stable for over 10 years of breeding. (8) Lastly, with such a sensitive reporter of caspase activity, tissue fixation must be performed with great care to maintain consistency of NACA signal and to avoid artifacts like “dark neurons” (Beevor, 1883; Cammermeyer, 1960; Jortner, 2006). In order to obtain reproducible results, we strongly recommend following the fixation procedure described in Materials and Methods.

Aside from the various limitations by design, the caspase activity reporter has a few important caveats. First, the baseline fluorescence of the transgenic reporter is nonzero; that is, healthy wild-type adult brains always contain some faint fluorescent reporter signal in some regions and cell types. Our data suggest that this baseline

signal is a mixture of specific, caspase-induced fluorescence and nonspecific, caspase-independent fluorescence, the latter most likely because of robust activity of the CAG promoter in certain brain regions and cell types. Therefore, it is incumbent on the researcher to include a control group in every experiment to account for the unknown nonspecific reporter signal in these transgenic mice. It is important to note, however, that in over 10 years of working with these mice, we have not detected bright, apoptosis-associated signal in healthy adult brain, except occasionally in the choroid plexus. Second, since one of the signal-quenching mechanisms of the reporter depends on an intact nuclear envelope, one would expect to see some fluorescent signal in dividing cells, although this type of signal would be limited by the rapid degradation imparted by intact PEST sequences. Because of this spurious fluorescence associated with cell division, the caspase reporter is best suited to the study of postmitotic tissues. Lastly, since we have not seen baseline apoptotic signal, or TUNEL-positive cells, in healthy adult brain in our decade of research on these mice, we doubt that the transgenic reporter has a toxic effect on cells. Indeed, the baseline fluorescent signal seen in brain is typically weak and difficult to distinguish from autofluorescence; hence, it is unlikely that the reporter is disturbing proteostasis, and we have seen no evidence of bright fluorescent clumps or aggregates. But we have not performed a rigorous battery of tests to demonstrate a lack of any cellular toxicity.

When we applied our careful sample preparation and microscopy techniques to the study of stress, we found a sex-specific persistent increase in NACA in the aBLA in females. Although surprising, if we suppose that caspases play a meaningful role in stress responsiveness, this result is not entirely unexpected. As mentioned above, the caspase pathway is engaged in apoptotic cell death in female brain, but a parallel cascade predominates in male brain (Zhu et al., 2006; Liu et al., 2009). Also, long-lived physiologic changes after stress tend to be confined to the amygdala. Perhaps the most widely reported alteration in the amygdala after stress is persistent dendritic hypertrophy (Roozendaal et al., 2009). Furthermore, neurons in the aBLA fire more after stress and drive negative-valence defensive behaviors (J. Kim et al., 2016, 2017). Hence, caspase activity may help explain alterations in neuronal morphology and activity, and, at least in females, the peculiar structural and functional responses to stress in the amygdala.

In conclusion, we have developed a transgenic reporter of caspase activity in mice, as well as tissue fixation and microscopy methods that enable the mapping and quantification of weak and transient NACA. We obtained evidence of a causal relation between caspase activity and amygdalar functional connectivity; and we used our system to uncover a sex-dependent effect of stress on the anterior basolateral amygdala. Our reporter and techniques can be used to test hypotheses relating to apoptotic and nonapoptotic caspase activity throughout the brain and the rest of the organism.

## References

- Bardet PL, Kolahgar G, Mynett A, Miguel-Aliaga I, Briscoe J, Meier P, Vincent JP (2008) A fluorescent reporter of caspase activity for live imaging. *Proc Natl Acad Sci U S A* 105:13901–13905.
- Beevor C (1883) Die Kleinhirnrinde. *Arch Amt Physiol* 365–388.
- Beraldo FH, Arantes CP, Santos TG, Queiroz NG, Young K, Rylett RJ, Markus RP, Prado MA, Martins VR (2010) Role of alpha7 nicotinic acetylcholine receptor in calcium signaling induced by prion protein interaction with stress-inducible protein 1. *J Biol Chem* 285:36542–36550.
- Beraldo FH, et al. (2013) Stress-inducible phosphoprotein 1 has unique cochaperone activity during development and regulates cellular response to ischemia via the prion protein. *FASEB J* 27:3594–3607.
- Besnard J, et al. (2012) Automated design of ligands to polypharmacological profiles. *Nature* 492:215–220.
- Billinton N, Knight AW (2001) Seeing the wood through the trees: a review of techniques for distinguishing green fluorescent protein from endogenous autofluorescence. *Anal Biochem* 291:175–197.
- Cammermeyer J (1960) The post-mortem origin and mechanism of neuronal hyperchromatosis and nuclear pyknosis. *Exp Neurol* 2:379–405.
- Campbell DS, Okamoto H (2013) Local caspase activation interacts with Slit-Robo signaling to restrict axonal arborization. *J Cell Biol* 203:657–672.
- Caserta TM, Smith AN, Gultice AD, Reedy MA, Brown TL (2003) Q-VD-OPh, a broad spectrum caspase inhibitor with potent antiapoptotic properties. *Apoptosis* 8:345–352.
- Chen SX, Cherry A, Tari PK, Podgorski K, Kwong YK, Haas K (2012) The transcription factor MEF2 directs developmental visually driven functional and structural metaplasticity. *Cell* 151:41–55.
- Chu X, Zhou Y, Hu Z, Lou J, Song W, Li J, Liang X, Chen C, Wang S, Yang B, Chen L, Zhang X, Song J, Dong Y, Chen S, He L, Xie Q, Chen X, Li W (2016) 24-hour-restraint stress induces long-term depressive-like phenotypes in mice. *Sci Rep* 6:32935.
- Corish P, Tyler-Smith C (1999) Attenuation of green fluorescent protein half-life in mammalian cells. *Protein Eng* 12:1035–1040.
- Drobizhev M, Makarov NS, Tillo SE, Hughes TE, Rebane A (2011) Two-photon absorption properties of fluorescent proteins. *Nat Methods* 8:393–399.
- Du L, Bayir H, Lai Y, Zhang X, Kochanek PM, Watkins SC, Graham SH, Clark RS (2004) Innate gender-based proclivity in response to cytotoxicity and programmed cell death pathway. *J Biol Chem* 279:38563–38570.
- Dzirasa K, Kumar S, Sachs BD, Caron MG, Nicoletis MA (2013) Cortical-amygdalar circuit dysfunction in a genetic mouse model of serotonin deficiency. *J Neurosci* 33:4505–4513.
- Ertürk A, Wang Y, Sheng M (2014) Local pruning of dendrites and spines by caspase-3-dependent and proteasome-limited mechanisms. *J Neurosci* 34:1672–1688.
- Evans TC Jr, Martin D, Kolly R, Panne D, Sun L, Ghosh I, Chen L, Benner J, Liu XQ, Xu MQ (2000) Protein trans-splicing and cyclization by a naturally split intein from the dnaE gene of *Synechocystis* species PCC6803. *J Biol Chem* 275:9091–9094.
- Fernando P, Brunette S, Megeney LA (2005) Neural stem cell differentiation is dependent upon endogenous caspase 3 activity. *FASEB J* 19:1671–1673.
- Fu Q, Duan X, Yan S, Wang L, Zhou Y, Jia S, Du J, Wang X, Zhang Y, Zhan L (2013) Bioluminescence imaging of caspase-3 activity in mouse liver. *Apoptosis* 18:998–1007.
- Galbán S, Jeon YH, Bowman BM, Stevenson J, Sebolt KA, Sharkey LM, Lafferty M, Hoff BA, Butler BL, Wigdal SS, Binkowski BF, Otto P, Zimmerman K, Vidugiris G, Encell LP, Fan F, Wood KV, Galbán CJ, Ross BD, Rehemtulla A (2013) Imaging proteolytic activity in live cells and animal models. *PLoS One* 8:e66248.
- Gogarten JP, Senejani AG, Zhaxybayeva O, Orendzenski L, Hilario E (2002) Inteins: structure, function, and evolution. *Annu Rev Microbiol* 56:263–287.

- Güttler T, Madl T, Neumann P, Deichsel D, Corsini L, Monecke T, Ficner R, Sattler M, Görlich D (2010) NES consensus redefined by structures of PKI-type and Rev-type nuclear export signals bound to CRM1. *Nat Struct Mol Biol* 17:1367–1376.
- Hama H, Kurokawa H, Kawano H, Ando R, Shimogori T, Noda H, Fukami K, Sakaue-Sawano A, Miyawaki A (2011) Scale: a chemical approach for fluorescence imaging and reconstruction of transparent mouse brain. *Nat Neurosci* 14:1481–1488.
- He Y, Lee T, Leong SK (2000) 6-Hydroxydopamine induced apoptosis of dopaminergic cells in the rat substantia nigra. *Brain Res* 858:163–166.
- Jiao S, Li Z (2011) Nonapoptotic function of BAD and BAX in long-term depression of synaptic transmission. *Neuron* 70:758–772.
- Jortner BS (2006) The return of the dark neuron. A histological artifact complicating contemporary neurotoxicologic evaluation. *Neurotoxicology* 27:628–634.
- Khanna D, Hamilton CA, Bhojani MS, Lee KC, Dlugosz A, Ross BD, Rehemtulla A (2010) A transgenic mouse for imaging caspase-dependent apoptosis within the skin. *J Invest Dermatol* 130:1797–1806.
- Kim IH, Racz B, Wang H, Burianek L, Weinberg R, Yasuda R, Wetsel WC, Soderling SH (2013) Disruption of Arp2/3 results in asymmetric structural plasticity of dendritic spines and progressive synaptic and behavioral abnormalities. *J Neurosci* 33:6081–6092.
- Kim J, Pignatelli M, Xu S, Itoharu S, Tonegawa S (2016) Antagonistic negative and positive neurons of the basolateral amygdala. *Nat Neurosci* 19:1636–1646.
- Kim J, Zhang X, Muralidhar S, LeBlanc SA, Tonegawa S (2017) Basolateral to central amygdala neural circuits for appetitive behaviors. *Neuron* 93:1464–1479.e5.
- Lein ES, et al. (2007) Genome-wide atlas of gene expression in the adult mouse brain. *Nature* 445:168–176.
- Lennon CW, Belfort M (2017) Inteins. *Curr Biol* 27:R204–R206.
- Li X, Zhao X, Fang Y, Jiang X, Duong T, Fan C, Huang CC, Kain SR (1998) Generation of destabilized green fluorescent protein as a transcription reporter. *J Biol Chem* 273:34970–34975.
- Li Z, Jo J, Jia JM, Lo SC, Whitcomb DJ, Jiao S, Cho K, Sheng M (2010) Caspase-3 activation via mitochondria is required for long-term depression and AMPA receptor internalization. *Cell* 141:859–871.
- Liu F, Li Z, Li J, Siegel C, Yuan R, McCullough LD (2009) Sex differences in caspase activation after stroke. *Stroke* 40:1842–1848.
- Liu F, Lang J, Li J, Benashski SE, Siegel M, Xu Y, McCullough LD (2011) Sex differences in the response to poly(ADP-ribose) polymerase-1 deletion and caspase inhibition after stroke. *Stroke* 42:1090–1096.
- McStay GP, Salvesen GS, Green DR (2008) Overlapping cleavage motif selectivity of caspases: implications for analysis of apoptotic pathways. *Cell Death Differ* 15:322–331.
- Neely MD, Robert EM, Baucum AJ, Colbran RJ, Muly EC, Deutch AY (2009) Localization of myocyte enhancer factor 2 in the rodent forebrain: regionally-specific cytoplasmic expression of MEF2A. *Brain Res* 1274:55–65.
- Niwa H, Yamamura K, Miyazaki J (1991) Efficient selection for high-expression transfectants with a novel eukaryotic vector. *Gene* 108:193–199.
- Okabe M, Ikawa M, Kominami K, Nakanishi T, Nishimune Y (1997) ‘Green mice’ as a source of ubiquitous green cells. *FEBS Lett* 407:313–319.
- Renolleau S, Fau S, Goyenvallée C, Joly LM, Chauvier D, Jacotot E, Mariani J, Charriaud-Marlangue C (2007) Specific caspase inhibitor Q-VD-OPh prevents neonatal stroke in P7 rat: a role for gender. *J Neurochem* 100:1062–1071.
- Rizzo MA, Springer GH, Granada B, Piston DW (2004) An improved cyan fluorescent protein variant useful for FRET. *Nat Biotechnol* 22:445–449.
- Roozendaal B, McEwen BS, Chattarji S (2009) Stress, memory and the amygdala. *Nat Rev Neurosci* 10:423–433.
- Shah NH, Muir TW (2014) Inteins: nature’s gift to protein chemists. *Chem Sci* 5:446–461.
- Tang HL, Tang HM, Fung MC, Hardwick JM (2015) In vivo CaspaseTracker biosensor system for detecting anastasis and non-apoptotic caspase activity. *Sci Rep* 5:9015.
- Unsain N, Barker PA (2015) New views on the misconstrued: executioner caspases and their diverse non-apoptotic roles. *Neuron* 88:461–474.
- Wang P, Chen T, Sakurai K, Han BX, He Z, Feng G, Wang F (2012) Intersectional Cre driver lines generated using split-intein mediated split-Cre reconstitution. *Sci Rep* 2:497.
- Westphal D, Sytnyk V, Schachner M, Leshchynska I (2010) Clustering of the neural cell adhesion molecule (NCAM) at the neuronal cell surface induces caspase-8- and -3-dependent changes of the spectrin meshwork required for NCAM-mediated neurite outgrowth. *J Biol Chem* 285:42046–42057.
- Wu H, Hu Z, Liu XQ (1998) Protein trans-splicing by a split intein encoded in a split DnaE gene of *Synechocystis* sp. PCC6803. *Proc Natl Acad Sci U S A* 95:9226–9231.
- Yamaguchi Y, Shinotsuka N, Nonomura K, Takemoto K, Kuida K, Yosida H, Miura M (2011) Live imaging of apoptosis in a novel transgenic mouse highlights its role in neural tube closure. *J Cell Biol* 195:1047–1060.
- Yang L, Sugama S, Mischak RP, Kiaei M, Bizat N, Brouillet E, Joh TH, Beal MF (2004) A novel systemically active caspase inhibitor attenuates the toxicities of MPTP, malonate, and 3NP in vivo. *Neurobiol Dis* 17:250–259.
- Yuan J, Shaham S, Ledoux S, Ellis HM, Horvitz HR (1993) The *C. elegans* cell death gene *ced-3* encodes a protein similar to mammalian interleukin-1 beta-converting enzyme. *Cell* 75:641–652.
- Zhu C, Xu F, Wang X, Shibata M, Uchiyama Y, Blomgren K, Hagberg H (2006) Different apoptotic mechanisms are activated in male and female brains after neonatal hypoxia-ischaemia. *J Neurochem* 96:1016–1027.