



HAL
open science

From netrin-1-targeted SPECT / CT to internal radiotherapy for management of advanced solid tumors

David Kryza, Jennifer Wischhusen, Mathieu Richaud, Maëva Hervieu, Jacqueline Sidi Boumedine, Jean-guy Delcros, Sophie Besse, Thomas Baudier, Pierre-alexandre Laval, Silvia Breusa, et al.

► To cite this version:

David Kryza, Jennifer Wischhusen, Mathieu Richaud, Maëva Hervieu, Jacqueline Sidi Boumedine, et al.. From netrin-1-targeted SPECT / CT to internal radiotherapy for management of advanced solid tumors. *EMBO Molecular Medicine*, 2023, 15, 10.15252/emmm.202216732 . hal-04107206

HAL Id: hal-04107206

<https://cnrs.hal.science/hal-04107206>













Submitted on 26 May 2023

HAL is a multi-disciplinary open access archive for the deposit and dissemination of scientific research documents, whether they are published or not. The documents may come from teaching and research institutions in France or abroad, or from public or private research centers.

L'archive ouverte pluridisciplinaire **HAL**, est destinée au dépôt et à la diffusion de documents scientifiques de niveau recherche, publiés ou non, émanant des établissements d'enseignement et de recherche français ou étrangers, des laboratoires publics ou privés.



From netrin-1-targeted SPECT/CT to internal radiotherapy for management of advanced solid tumors

David Kryza^{1,2,*†} , Jennifer Wischhusen^{3,†}, Mathieu Richaud^{3,4,†} , Maëva Hervieu^{3,4}, Jacqueline Sidi Boumedine^{1,4}, Jean-Guy Delcros⁵ , Sophie Besse⁶, Thomas Baudier⁷ , Pierre-Alexandre Laval³, Silvia Breusa^{1,3,4} , Erwan Boutault⁶, Hugo Clermidy³ , Nicolas Rama³ , Benjamin Ducarouge⁸ , Mojgan Devouassoux-Shisheboran⁹, Jean-Michel Chezal⁶ , Anne-Laure Giraudet², Thomas Walter^{3,4,10}, Patrick Mehlen^{3,**} , David Sarrut^{7,***}  & Benjamin Gibert^{3,4,****} 

Abstract

Targeted radionuclide therapy is a revolutionary tool for the treatment of highly spread metastatic cancers. Most current approaches rely on the use of vectors to deliver radionuclides to tumor cells, targeting membrane-bound cancer-specific moieties. Here, we report the embryonic navigation cue netrin-1 as an unanticipated target for vectorized radiotherapy. While netrin-1, known to be re-expressed in tumoral cells to promote cancer progression, is usually characterized as a diffusible ligand, we demonstrate here that netrin-1 is actually poorly diffusible and bound to the extracellular matrix. A therapeutic anti-netrin-1 monoclonal antibody (NP137) has been preclinically developed and was tested in various clinical trials showing an excellent safety profile. In order to provide a companion test detecting netrin-1 in solid tumors and allowing the selection of therapy-eligible patients, we used the clinical-grade NP137 agent and developed an indium-111-NODAGA-NP137 single photon emission computed tomography (SPECT) contrast agent. NP137-¹¹¹In provided specific detection of netrin-1-positive tumors with an excellent signal-to-noise ratio using SPECT/CT imaging in different mouse models. The high specificity and strong affinity of NP137 paved the way for the generation of lutetium-177-DOTA-

NP137, a novel vectorized radiotherapy, which specifically accumulated in netrin-1-positive tumors. We demonstrate here, using tumor cell-engrafted mouse models and a genetically engineered mouse model, that a single systemic injection of NP137-¹⁷⁷Lu provides important antitumor effects and prolonged mouse survival. Together, these data support the view that NP137-¹¹¹In and NP137-¹⁷⁷Lu may represent original and unexplored imaging and therapeutic tools against advanced solid cancers.

Keywords cancer; extracellular matrix; netrin; radioimmunotherapy; targeted therapy

Subject Categories Cancer; Pharmacology & Drug Discovery

DOI 10.15252/emmm.202216732 | Received 6 September 2022 | Revised 8 February 2023 | Accepted 10 February 2023 | Published online 6 March 2023

EMBO Mol Med (2023) 15: e16732

Introduction

Netrin-1 is known to be crucial during embryonic development and more particularly in the establishment of the central nervous system, through its role in neuronal navigation as exemplified in

1 Imthernat, LAGEPP, CNRS UMR 5007, Université de Lyon, Hospices Civils de Lyon, Lyon, France

2 Lumen Nuclear Medicine group, Hospices Civils de Lyon et Centre Léon Bérard, Lyon, France

3 Apoptosis, Cancer and Development Laboratory- Equipe labellisée 'La Ligue', LabEx DEVWeCAN, Institut Convergence PLASCAN, Centre de Recherche en Cancérologie de Lyon, INSERM U1052-CNRS 5286, Université de Lyon1, Lyon, France

4 Gastroenterology and technologies for health, Centre de Recherche en Cancérologie de Lyon, INSERM U1052-CNRS5286, Université Lyon 1, Lyon, France

5 Small molecules for biological targets, Centre de Recherche en Cancérologie de Lyon. UMR INSERM 1052 – CNRS 5286 ISPB Rockefeller, Lyon, France

6 Université Clermont Auvergne, Inserm, Imagerie Moléculaire et Stratégies Théranostiques, Clermont-Ferrand, France

7 CREATIS, INSA Lyon, INSERM U1206 – CNRS UMR 5220, Université de Lyon, Lyon, France

8 Netris Pharma, Lyon, France

9 Hospices Civils de Lyon, Department of Pathology, Lyon, France

10 Hospices Civils de Lyon, Hôpital Edouard Herriot, Service de Gastroentérologie et d'Oncologie Digestive, Lyon Cedex 03, France

*Corresponding author. Tel: +33 469856006; E-mail: david.kryza@univ-lyon1.fr

**Corresponding author. Tel: +33 478785128; E-mail: patrick.mehlen@lyon.unicancer.fr

***Corresponding author. Tel: +33 478785151; E-mail: david.sarrut@creatis.insa-lyon.fr

****Corresponding author. Tel: +33 469856266; E-mail: benjamin.gibert@lyon.unicancer.fr

†These authors contributed equally to this work

commissural axon guidance (Serafini *et al*, 1996; Belle *et al*, 2014). The classically admitted view of its role was that it attracts/repulses neurons/axons following its secretion through the generation of a gradient in the surrounding environment. This has recently been questioned as netrin-1 seems to be less diffusible than initially described but rather actively transported during embryonic development (Dominici *et al*, 2017). Its signaling is transduced by dependence receptors (DRs) like deleted in colorectal carcinoma (DCC), members of the uncoordinated-5 (UNC-5) family, and neogenin (Fazeli *et al*, 1997; Mehlen *et al*, 2011; Renders *et al*, 2021). Binding of netrin-1 to these receptors impedes cell death and explains its broad physiological and pathological implications (van Gils *et al*, 2012; Ramkhalawon *et al*, 2014; Ozmadenci *et al*, 2015; Bone-schansker *et al*, 2016; Brisset *et al*, 2021).

In particular, netrin-1 was shown to be upregulated in many types of cancers, including breast cancer, non-small-cell lung cancer, and medulloblastoma (Fitamant *et al*, 2008; Delloye-Bourgeois *et al*, 2009; Akino *et al*, 2014). This overexpression in tumor cells is one of the survival mechanisms proposed, whereby increased expression of netrin-1 blocks cell death induced by DRs (Mehlen *et al*, 2011; Gibert & Mehlen, 2015), and seems to be enhanced following chemotherapy (Paradisi *et al*, 2013). Targeting this DR/ligand interaction has thus appeared as an attractive therapeutic strategy in oncology (Paradisi *et al*, 2013; Gibert & Mehlen, 2015; Grandin *et al*, 2016a,b), with several molecules under development to block netrin-1. Consistently, a human monoclonal anti-netrin-1 antibody, called NP137, blocking UNC5B/netrin-1 interaction, is currently assessed in several clinical Phase II trials to evaluate its anticancer activity in monotherapy or in combination with standards of care such as chemotherapy or immune checkpoint inhibitors. Preliminary results of clinical activity as a single agent are encouraging (Grandin *et al*, 2016b; Cassier *et al*, 2019). In addition, netrin-1 blockage seems to be effective in a subset of patients only requiring a simple test to identify eligible patients, that is, those with detectable netrin-1 levels. Conventional approaches to identify patients likely to respond to cancer treatments are largely based on invasive primary tissue biopsy collection and histological staining and analysis, and overlook specific features of metastases, such as initial treatment resistance. Indeed, immunohistochemistry (IHC) has been the reference for the characterization of target expression in cancer for many years. However, this strategy has been called into question by recent data obtained with immune checkpoint inhibitors, as there is a strong discrepancy between target expression and response within the patient. Thus, patients responding to the PDL-1 antibody could be negative for the expression of PDL-1 in IHC and *vice versa*. It can be hypothesized that target expression is not stable over time; for instance, since IHC analyses are made with paraffin blocks taken from the primary tumor at diagnosis sometimes months or years before clinical trials. The expression of the target may then differ in metastases. New diagnostic strategies are therefore needed to analyze target expression in real time on a whole-body scale to highlight all the variations in protein expression within tumors and metastases.

In an attempt to develop a less invasive means of detection/diagnosis of netrin-1-expressing patients eligible for anti-netrin-1 treatment, we developed a radiolabeling-based methodology to visualize netrin-1 accumulation *in vivo* by SPECT/CT imaging. We then demonstrated netrin-1 accumulation in the tumor cell extracellular matrix rather than its diffusion in the microenvironment and

detected a strong accumulation of radioactivity within tumors. We then created a new radiolabeled NP137 compound aimed at internally delivering radiopharmaceutical therapy (RPT), able to selectively kill netrin-1-expressing cells with radioactivity through the highly specific accumulation of the NP137 agent. To achieve this, we radiolabeled NP137 with lutetium-177 (¹⁷⁷Lu) and observed tumor cell death with high specificity in a number of xenografts and genetic mouse models. This technology based on coupled peptides and antibody drug conjugates is already used in the clinic (Strosberg *et al*, 2017; Sartor *et al*, 2021) and many developments are ongoing to target both cancer cells and the tumor microenvironment that surrounds them, such as activated platelets or cancer-associated fibroblasts (CAFs) (Dal Corso *et al*, 2017; Lindner *et al*, 2019; Yap *et al*, 2019; Fabre *et al*, 2020).

Taken together, these data demonstrate that our radiolabeled tools can provide very effective targeting of tumor cells and are highly relevant for a rapid transfer to the clinic.

Results

Netrin-1 is a poorly diffusible matrix-binding protein

In order to follow netrin-1 by radio-imaging *in vivo*, we first had to precisely localize the protein. Indeed, recent studies suggested that netrin-1 may not be as diffusible as originally thought during embryonic development (Serafini *et al*, 1996; Dominici *et al*, 2017). To our knowledge, no one has addressed this issue in pathological conditions and more specifically in cancer. IHC analysis of netrin-1 levels in human tumors showed that the protein was present in the basement membrane and in the intercellular space of tumor cells, indicative of its accumulation in the extracellular matrix (Fig 1A and B). To further investigate the level of netrin-1 diffusion, we conducted immunoblots of cells expressing netrin-1 (4T1 and EMT6 cell lines) or not (67NR) collected from plastic dishes with or without SDS, capable of solubilizing matrix proteins. Netrin-1 could be clearly measured in detergent conditions, in which it is detached from the matrix, compared with control cells, indicating that it may bind to the matrix (Fig 1C and D). We thus used heparin treatment, a procedure routinely used to separate matrix and sugar residues from cells growing in plastic plates (Serafini *et al*, 1994). While no netrin-1 was detected in the conditioned medium from netrin-1-expressing 4T1/EMT6 cells in non-heparin-treated condition, when heparin was added, netrin-1 was detected (Fig 1E). Together, these data support the view that netrin-1 is only poorly diffusible and binds to the matrix. In order to study the molecular mechanisms and protein interactions necessary for the binding of netrin-1 to the matrix, we sought to identify potential molecular partners of netrin-1 within the matrix components, by conducting a biolayer interferometry (BLI) screen (Fig 1F). Human fibronectin was used as a negative control. Of interest, we identified that netrin-1 strongly bound to the matrix-forming proteins laminin-1 ($K_d = 29.5$ nM), lumican ($K_d = 15.5$ nM), fibronectin leucine-rich transmembrane protein (FLRT1) ($K_d = 15.5$ nM), integrin $\alpha 6\beta 4$ ($K_d = 0.96$ nM), glypican-1 ($K_d = 15.6$ nM), and vitronectin ($K_d = 6.85$ nM; Fig 1F and G).

Together, these results argue in favor of netrin-1 sequestration by the matrix rather than its diffusion in the cell microenvironment. Netrin-1 being immobilized in the extracellular matrix of tumor

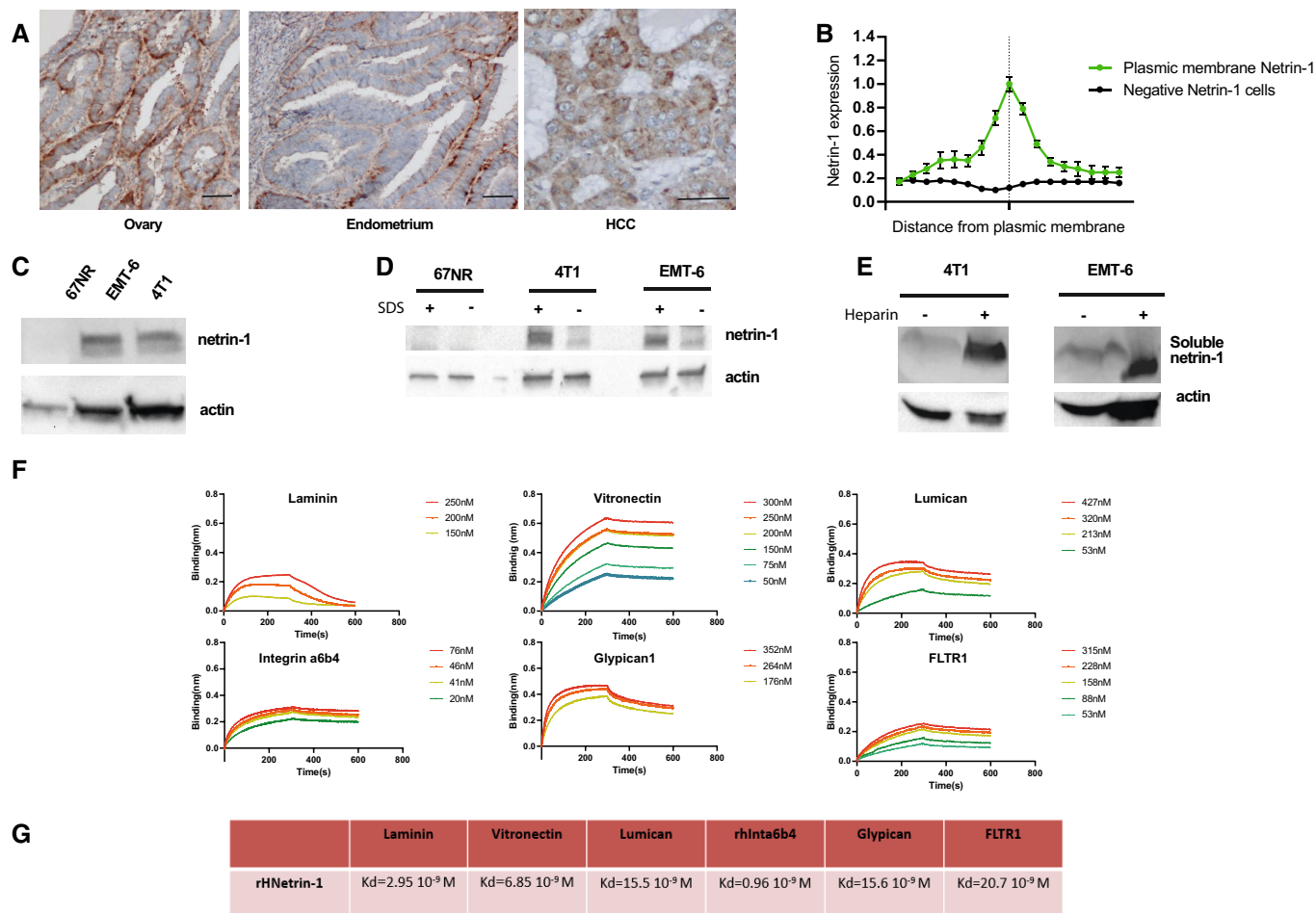


Figure 1. Netrin-1 binds to and is retained within the extracellular matrix (ECM).

- A Representative bright field micrographs of netrin-1 immunohistochemistry in formalin-fixed paraffin-embedded human ovarian, endometrial, and hepatocellular carcinoma (HCC) tumor sections. Scale bar 50 μ m.
- B Quantification by immunoblots of netrin-1 in the ECM of cancer cells of human tumors ($n = 3$, error bars are s.d.). The vertical line corresponds to the intercellular zone.
- C Selection of models expressing netrin-1 by immunoblot.
- D Immunoblots quantification of netrin-1 in samples harvested with or without SDS lysis buffer.
- E Immunoblots of netrin-1 in concentrated supernatants from cells treated or not with heparin.
- F Analysis of h-netrin-1 (human recombinant netrin-1) binding to ECM components: mouse laminin-1 (m-Laminin-1), recombinant human vitronectin, recombinant human lumican, recombinant human integrin $\alpha 6 \beta 4$, recombinant human glypican-1, and recombinant human FLTR1 by biolayer interferometry assays.
- G K_d calculation after biolayer interferometry analysis of the experiment presented in (F).

Source data are available online for this figure.

cells, we hypothesized that netrin-1 could be detected by *in vivo* molecular imaging. Thus, we aimed at developing a netrin-1-targeted radiotracer for nuclear imaging.

Characterization of a new companion test for real-time netrin-1 detection

Personalized medicine approaches rely on biomarker assessment to guide decision-making for effective cancer patient management. Accordingly, we assumed that netrin-1 protein levels would be key to selecting patients eligible for anti-netrin-1 treatment. To develop a real-time noninvasive companion test to specifically monitor netrin-1 expression, we prepared novel radiotracers by conjugating

NP137 or fragments of it (Fab or $F(ab')_2$) to metal chelators (DOTA or NODAGA; Fig 2A–C), which in turn allowed for loading with radioactive indium-111 (^{111}In , half-life of 67 h), routinely used in nuclear imaging and detectable by SPECT imaging (Ritt, 2022). The three molecules ^{111}In -NP137, ^{111}In -NP137-Fab, and ^{111}In -NP137- $F(ab')_2$ were designed to assess their diffusion and accumulation properties *in vivo*. The full-size ^{111}In -NP137 was presumed to have a longer *in vivo* half-life, ^{111}In -NODAGA-NP137-Fab to penetrate the tumor more rapidly, and ^{111}In -NODAGA-NP137- $F(ab')_2$ to penetrate faster than the full-size agent and with better retention than the Fab construct due to better affinity and avidity. We first verified by BLI that the conjugation of the metal chelator did not disturb the ability of NP137, NP137- $F(ab')_2$, and NP137-Fab to bind netrin-1 and to

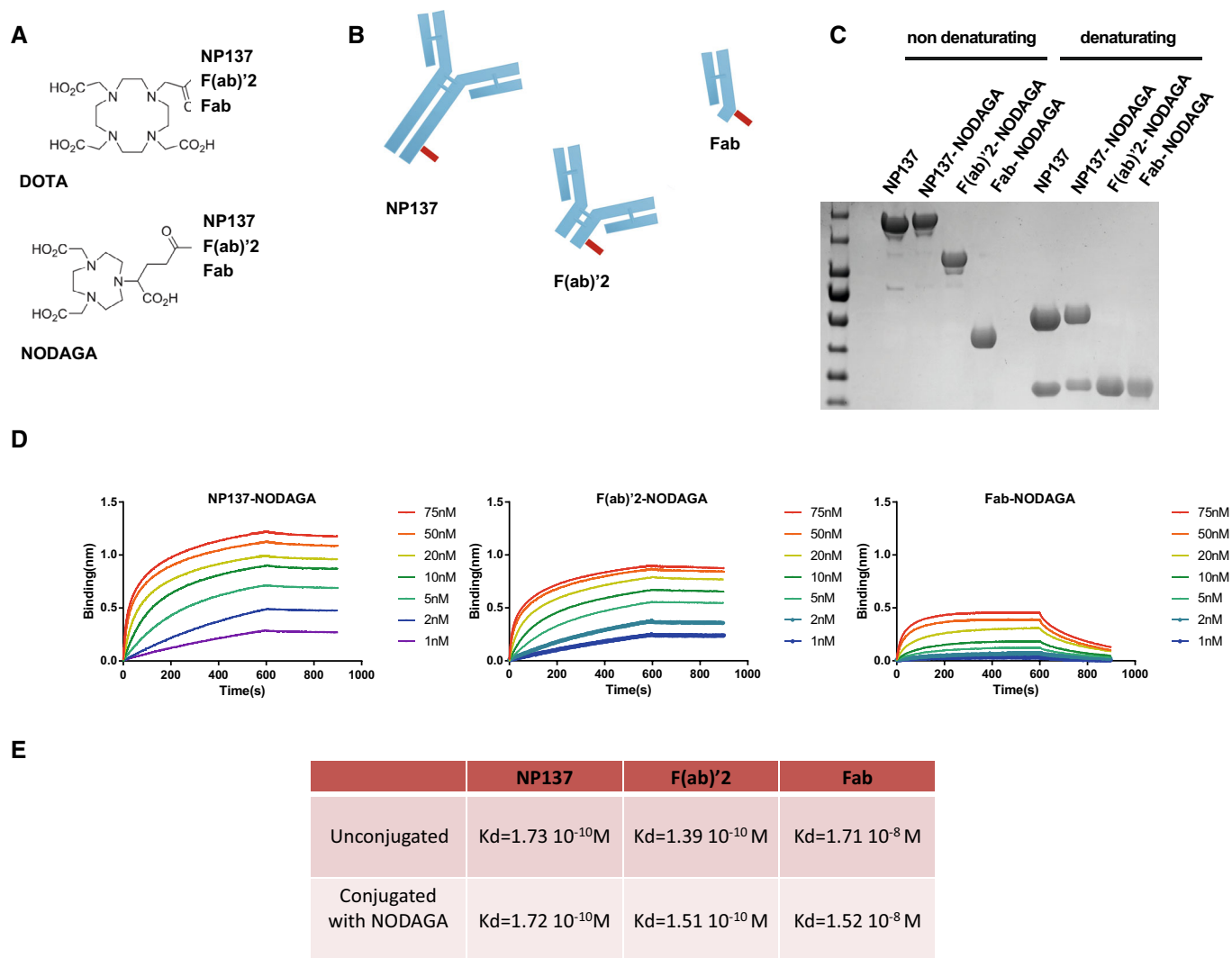


Figure 2. Characterization of conjugated NP137 fragments.

- A Chemical representation of DOTA (1,4,7,10-tetraazacyclododecane-1,4,7,10-tetraacetic acid) and NODAGA (1,4,7-triazacyclononane, 1-glutaric acid-4,7 acetic acid) immunoconjugates.
- B Representation of full anti-netrin-1 (NP137), F(ab)₂, and Fab conjugated to NODAGA or DOTA chelators (in red).
- C NP137 fragments were produced by enzymatic cleavage and subjected to electrophoresis in denaturing or non-denaturing conditions.
- D Biolayer interferometry analysis of netrin-1/NP137 and derivatives after NODAGA bioconjugation. Numbers indicate the concentration in nM of NP137 and derivatives.
- E K_d calculation after biolayer interferometry analysis of the experiments presented in d and compared with K_d of nonmodified NP137.

Source data are available online for this figure.

inhibit the binding of netrin-1 to its receptors (Fig 2D). We observed that the chelator did not alter the affinity of the full-size antibody or its fragments, as evidenced by a K_d in the nanomolar range (Figs 2D and E, and EV1A and B).

Next, to analyze the capacity of these molecules to detect netrin-1 *in vivo*, we engrafted netrin-1-positive 4T1 cells and netrin-1-negative 67NR cells in syngeneic mice. Engrafted animals were injected with radiolabeled immunoconjugates, and radioactivity uptake was monitored by SPECT/CT imaging. A rapid ¹¹¹In-NODAGA-NP137 uptake was detectable in 4T1 tumors, whereas that of ¹¹¹In-NODAGA-NP137-F(ab)₂ was slower, and that of ¹¹¹In-NODAGA-Fab negligible (Figs 3A and EV2A and B). Interestingly,

no enhancement of radioactive signal was detected in 67NR tumors, indicating that uptake was specific to netrin-1-expressing tumors (Figs 3B and EV2C and D). The incorporation ratio of radioactivity in 67NR versus 4T1 tumor cells was determined over time, and an accumulation of 14.1% of total injected radioactivity was measured in netrin-1-positive tumors at 48 h compared with 1.97% in netrin-1-negative tumors ($P < 0.001$; Fig 3C). To detect possible nonspecific binding of NP137, we quantified indium-111 uptake within organs, following mouse sacrifice and organ removal. We observed a peak in the incorporation of 28% of the injected dose/g of organ 72 h post injection in netrin-1-positive tumors, other tissues displaying minimal radioactive signal enhancement, highlighting

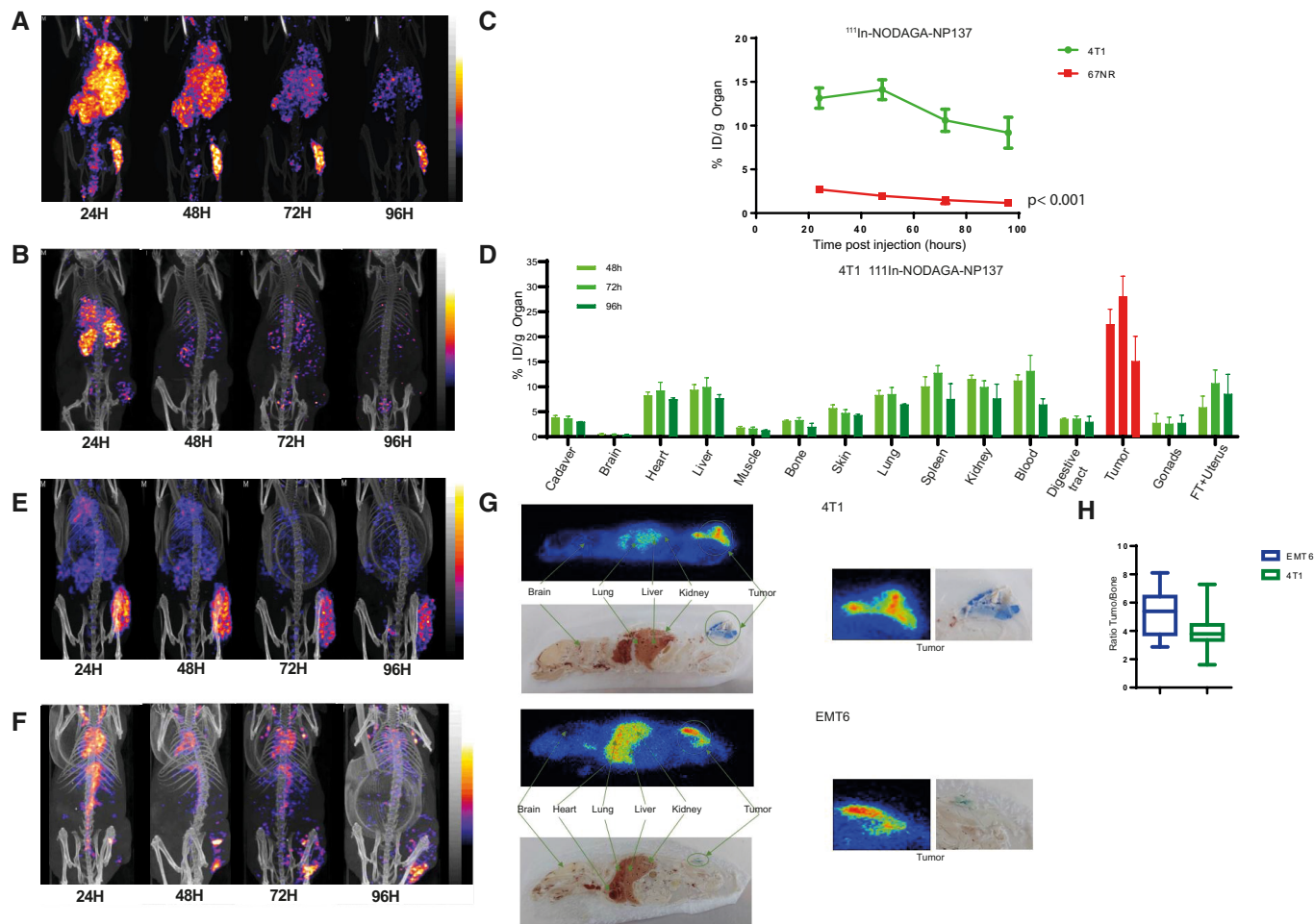


Figure 3. A new SPECT/CT companion test for netrin-1 detection.

A Maximum Intensity Projection of Tomographic scintigraphy and X-ray CT of the whole body of a Balb/cj mouse bearing a 4T1 (netrin-1-positive) tumor, acquired 24, 48, 72, and 96 h after IV injection of NP137-NODAGA-¹¹¹In.

B Maximum Intensity Projection of Tomographic scintigraphy and X-ray CT of the whole body of a Balb/c mouse bearing a 67NR (netrin-1-negative) tumor, acquired 24, 48, 72, and 96 h after IV injection of NP137-NODAGA-¹¹¹In.

C Tumor biodistribution ratio of NP137-NODAGA-¹¹¹In in Balb/cj mice bearing 4T1 xenograft versus 67NR xenografts at 24 h (4 mice), 48 h (4 mice), 72 h (4 mice) and 96 h (4 mice); Two-way ANOVA; Error bars indicate s.d.

D Biodistribution properties of NP137-NODAGA-¹¹¹In in a Balb/cj mouse bearing 4T1 xenografts at 48 h (4 mice), 72 h (4 mice), and 96 h (3 mice). Radioactivity incorporation was quantified by the percentage of the injected dose *per* gram of organ. Error bars indicate s.d.

E Maximum Intensity Projection of Tomographic scintigraphy and X-ray CT of the whole body of a Balb/cj mouse bearing an EMT6 (netrin-1-positive) tumor, acquired 24, 48, 72, and 96 h after IV injection of NP137-NODAGA-¹¹¹In.

F Maximum Intensity Projection of Tomographic scintigraphy and X-ray CT of the whole body of a NMRI nude mouse bearing a H358 (netrin-1-positive) tumor, acquired at 24, 48, 72, and 96 h after IV injection of NP137-NODAGA-¹¹¹In.

G Whole-body autoradiography of NP137-NODAGA-¹¹¹In in Balb/cj mice bearing a 4T1 (top) or an EMT6 (bottom) tumor using a beta imager system.

H Analysis of the autoradiography ratio of NP137-NODAGA-¹¹¹In in tumor versus bone in Balb/cj mice bearing EMT6 ($n = 14$ relative values) or 4T1 ($n = 24$ relative values) tumors. Whiskers indicate min to max, Central band of the box indicates the median, bottom of the box indicates Q1, and top of the box indicates Q3.

Source data are available online for this figure.

the specificity of ¹¹¹In-NODAGA-NP137 (Fig 3D). Taken together, these data demonstrate that tumoral indium-111 accumulation is more efficient with the full-size antibody compared with the Fab or F(ab')₂ constructs (Figs 3C and EV2E and F).

Finally, we confirmed the accumulation of NP137-¹¹¹In in another mouse tumor model, EMT6, and in a human xenograft model H358 both expressing netrin-1 at different levels with tumoral uptakes in both models (Figs 3E and F, and EV3A–E). The specific

accumulation of NP137 within tumors was further assessed by *ex vivo* autoradiography showing peaks of signal within 4T1 and EMT6 tumor models and corroborating the *in vivo* imaging results (Fig 3G). To verify the level of toxicity of NP137-¹¹¹In compound, we also analyzed the ratio of radioactivity measured between the tumor and bone, which is the niche of hematopoiesis and a prime location for the sequestration of drugs in patients, and observed a 6- and 4-fold higher radioactivity capture in EMT6 and 4T1 tumors,

respectively, than in the bone suggesting minimal off-target accumulation (Fig 3H).

NP137-¹⁷⁷Lu as a new theranostic compound to target aggressive tumors

Based on our findings on ¹¹¹In-radiolabeled NP137 uptake by tumors, we wondered whether the antibody could be coupled to a therapeutic agent. Indeed, even though NP137 has shown encouraging antitumoral results in clinical settings, imaging data shown here supported the use of NP137 as a potential vector to deliver radiotherapy. Given that the incorporation of the antibody into these tumors was rapid, specific, and that it accumulated in the extracellular matrix (ECM) of these cells, we developed a radiolabeled molecule comprising the anti-netrin-1 antibody NP137 fused to the radionuclide lutetium-177. NP137-DOTA-¹⁷⁷Lu (or thereafter NP137-¹⁷⁷Lu), that emits beta radiation (half-life of 6.7 days), was shown to damage/kill cancer cells in prostate and neuroendocrine tumors (Tagawa *et al*, 2013; Strosberg *et al*, 2017). We observed that ¹⁷⁷Lu binding to the anti-netrin-1 mAb does not alter the stability of the antibody via a radiolysis phenomenon. NP137-¹⁷⁷Lu was stable for over 7 days in a human plasma sample without the release of potentially toxic metal ions (Fig EV4A). To analyze the tumor growth inhibitory capacity of this compound, we treated mice engrafted with 4T1 and EMT6 tumors, using a single dose of NP137-DOTA, as a control, or NP137-¹⁷⁷Lu. Single injection of NP137-¹⁷⁷Lu (< 10 MBq/mouse) significantly decreased tumor growth associated with a two-fold increase in mouse disease-free survival ($P < 0.001$; Fig 4A and B). Comparison of the chelators DOTA or NODAGA for loading of lutetium-177 and their effect on NP137-¹⁷⁷Lu-mediated tumor growth inhibition and survival did not show any difference suggesting that both chelators had an equal performance (Fig EV4B and C). Therapeutic efficacy of NP137-¹⁷⁷Lu was further assessed in the human lung cancer xenograft model H358 where, once again, the treatment significantly reduced the rate of tumor growth corroborating a clear antitumoral effect ($P < 0.001$; Fig 4C). The reduction in tumor growth was shown to be mediated by an increase in tumor cell apoptosis, as detected by caspase-3 cleavage, and a decrease in tumor proliferation, as detected by Ki67 staining (Fig 4D and E).

Radiolabeled NP137 as new diagnostic tools for early tumor detection and treatment of a transgenic cancer model

Xenografts and patient-derived xenografts (PDXs) are highly important models for studying human disease, but they are limited in their capacity to reflect the pathophysiological conditions linked to tumor development and its microenvironment, including the vascularization and the immune microenvironment. In order to assess the value of radiolabeled NP137 in detecting and treating tumors in an *in vivo* setting reflecting human tumor development, we tested our radiotracers in the transgenic model of spontaneously developing luminal mammary cancer MMTV-NeuT (Guy *et al*, 1992), which expressed netrin-1 as illustrated by immunoblotting (Fig 5A and B). SPECT/CT imaging using NP137-¹¹¹In of *in situ* lesions showed a strong staining in fat pad tissues in all 10 mammary glands with incorporation peaking 48 h post injection (Fig 5C and D). A large tumor uptake close to 10% of ID/tumor at 96 h postinjection was measured in all tumors highlighting the sensitivity of the nuclear

medicine contrast agent for netrin-1-positive tumors. The MMTV-NeuT model is known to develop a number of mammary tumor foci in all mammary fat pads and it is very interesting to note that some tumors were visible even before their detection by mammary palpation, advocating for the use of NP137-¹¹¹In as a potential tool for early cancer detection and to monitor the appearance of metastatic lesions derived from netrin-1-overexpressing primary tumors (Fig 5D and E). As this model nicely mimics human disease, we therefore performed similar experiments for targeted radionuclide therapy with NP137-¹⁷⁷Lu in this transgenic mouse model that resulted in an increase in the overall survival, highlighting the strong antitumoral effect of the NP137-¹⁷⁷Lu radioimmunoconjugate ($P < 0.001$; Fig 5F). Taken together, the use of radiolabeled NP137 for theranostic purpose proved feasible. Netrin-1-positive tumors could be reliably identified and then subjected to targeted radiotherapy slowing down tumor growth and prolonging survival.

Discussion

Radiolabeling is a very promising tool to trace, visualize, and detect a protein that is secreted, albeit trapped in the ECM as shown in the present proof-of-concept study for the axon guidance cue netrin-1. However, other tumor-specific matrix-embedded proteins could probably be detected by similar strategies as long as these specific proteins—for example, axon guidance ligands, morphogens, and cellular secreted ligands—are specifically re-expressed in cancer settings.

Here, we demonstrated that netrin-1 was not freely diffusible in the cell microenvironment but adheres to the ECM. Indeed, netrin-1 was initially described for its role in neural development as a secreted molecule that generates a diffusible gradient in the surrounding microenvironment (Serafini *et al*, 1996; Kennedy, 2006). This dogma was recently questioned, as netrin-1 was shown to be actively transported during brain formation (Dominici *et al*, 2017; Varadarajan *et al*, 2017), and is corroborated by our results demonstrating that netrin-1 is retained in the ECM by interacting with matrix proteins. We not only clearly observed its radiolabeled accumulation in the tumor (and probably ECM) but were also unable to detect netrin-1 in the serum of patients and mice (by ELISA or mass spectrometry). Further studies are required to understand the transport/dissemination of netrin-1 in order to provide a complete and more dynamic picture of the mechanisms in which it is involved, such as inflammation (Barnault *et al*, 2022).

Based on this lack of diffusibility, we elaborated a new companion test for the *in vivo* detection of netrin-1. Netrin-1 has been characterized as a therapeutic target in several types of cancers currently evaluated in several clinical phase Ia/b and II trials (NCT04652076; NCT05605496; NCT05546853; NCT05546879; Cassier *et al*, 2019). However, because of the lack of a conventional test (*i.e.*, serum detection with ELISA, mass spectrometry, and robustness of pathological analyses quantifying netrin-1 expression in FFPE samples), there is a need for an innovative, simple, and robust companion test to detect netrin-1 expression in tumors. Having identified netrin-1 as being immobilized and accessible in the ECM of tumor cells, we elaborated a new companion test for noninvasive *in vivo* imaging by a nuclear medicine SPECT/CT approach. Previously, an alternative imaging approach for netrin-1 was explored using netrin-1-targeted microbubbles for ultrasound molecular imaging (Wisshusen

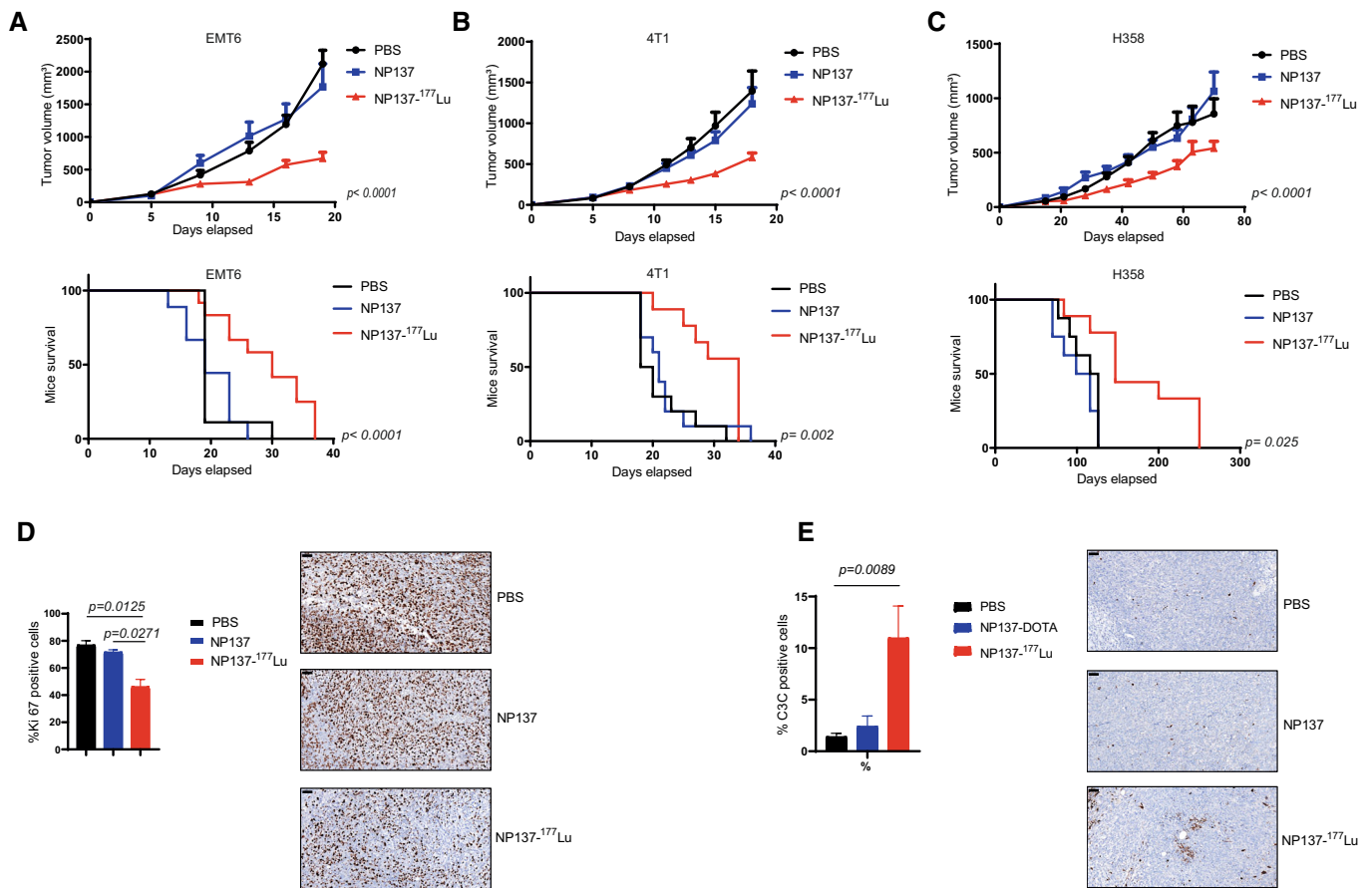


Figure 4. A new radiolabeled NP137-based anticancer therapy.

- A** (Top) Balb/cj mice were engrafted with EMT6 cells by subcutaneous injection of 1 million cells. After 5 days, animals were treated by IV injection of PBS, DOTA-NP137, or NP137-¹⁷⁷Lu. $n = 9$ animals/group for PBS and DOTA-NP137; $n = 12$ animals/group for NP137-¹⁷⁷Lu; $P < 0.001$ between PBS and NP137-¹⁷⁷Lu and between DOTA-NP137 and NP137-¹⁷⁷Lu (Two-way ANOVA) between PBS and NP137-¹⁷⁷Lu and between DOTA-NP137 and NP137-¹⁷⁷Lu. Error bars indicate s.e.m. (Bottom) NP137-¹⁷⁷Lu survival of mice engrafted with EMT6 cells. Kaplan–Meier survival curves of mice treated or not with DOTA-NP137. Mantel–Cox test; $n = 9$ animals/group for PBS and DOTA-NP137; $n = 12$ animals/group considered as dead at a tumor volume of 2,000 mm³ for NP137-¹⁷⁷Lu; $P < 0.001$ between PBS and NP137-¹⁷⁷Lu and between DOTA-NP137 and NP137-¹⁷⁷Lu.
- B** (Top) Balb/c mice were engrafted with 4T1 cells by subcutaneous injection of 1 million cells. After 8 days, animals received IV injections of PBS, DOTA-NP137, or NP137-¹⁷⁷Lu; $n = 10$ animals/group for PBS and DOTA-NP137; $n = 9$ animals/group for NP137-¹⁷⁷Lu; $P < 0.001$ between PBS and NP137-¹⁷⁷Lu and between DOTA-NP137 and NP137-¹⁷⁷Lu (Two-way ANOVA). Error bars indicate s.e.m. (Bottom) NP137-¹⁷⁷Lu survival of mice engrafted with 4T1 cells. Kaplan–Meier survival curves of mice treated or not with DOTA-NP137. Mantel–Cox test; $n = 10$ animals/group for PBS and DOTA-NP137; $n = 9$ animals/group considered as dead at a tumor volume of 2,000 mm³ for NP137-¹⁷⁷Lu; $P = 0.002$ between PBS and NP137-¹⁷⁷Lu and between DOTA-NP137 and NP137-¹⁷⁷Lu.
- C** (Top) NMR1 nude mice were engrafted with H358 cells by subcutaneous injection of 5 million cells and considered as dead when tumor volume reached 2,000 mm³. After 15 days, animals were treated by IV injection of PBS, DOTA-NP137, or NP137-¹⁷⁷Lu; $n = 8$ animals/group for PBS and DOTA-NP137; $n = 9$ animals/group for NP137-¹⁷⁷Lu; $P < 0.001$ between PBS and NP137-¹⁷⁷Lu and between DOTA-NP137 and NP137-¹⁷⁷Lu (2-way ANOVA) between PBS and NP137-¹⁷⁷Lu and between DOTA-NP137 and NP137-¹⁷⁷Lu. Error bars indicate s.e.m. (Bottom) NP137-¹⁷⁷Lu survival of mice engrafted with H358 cells. Kaplan–Meier survival curves of mice treated or not with DOTA-NP137. Mantel–Cox test; $n = 8$ animals/group for PBS and DOTA-NP137; $n = 9$ animals/group for NP137-¹⁷⁷Lu; $P = 0.025$ between PBS and NP137-¹⁷⁷Lu and between DOTA-NP137 and NP137-¹⁷⁷Lu.
- D** (Left) Quantification of Ki67 expression in EMT6 tumors harvested in Balb/cj mice 7 days post injection of PBS, DOTA-NP137, or NP137-¹⁷⁷Lu. (Right) Representative bright field micrographs of Ki67 immunohistochemistry in formalin-fixed paraffin-embedded EMT6 tumors harvested in Balb/cj mice 7 days post injection of PBS, DOTA-NP137, or NP137-¹⁷⁷Lu; $n = 4$ mice per groups; One-way ANOVA. Error bars indicate s.e.m. Scale bar: 50 μ m.
- E** (Left) Quantification of cleaved caspase-3 expression in EMT6 tumors harvested in Balb/cj mice 7 days post injection of PBS, DOTA-NP137, or NP137-¹⁷⁷Lu. (Right) Representative bright field micrographs of cleaved caspase-3 immunohistochemistry in formalin-fixed paraffin-embedded EMT6 tumor harvested in Balb/cj mice 7 days post injection of PBS, DOTA-NP137, or NP137-¹⁷⁷Lu; $n = 4$ mice per groups; One-way ANOVA. Error bars indicate s.e.m. Scale bar: 50 μ m.

Source data are available online for this figure.

et al, 2018). However, ultrasound molecular imaging is still in its infancy, and targeted microbubble contrast agents are not readily available for clinical translation, while 3D reconstructed SPECT/CT images are already the standard practice for patient care and can be

used to visually identify uptake and perform image-based quantification, as in current ¹⁷⁷Lu-based therapies (peptide receptor or PSMA; Strosberg et al, 2017; Sartor et al, 2021). Therefore, we selected SPECT/CT imaging as a novel imaging modality, which

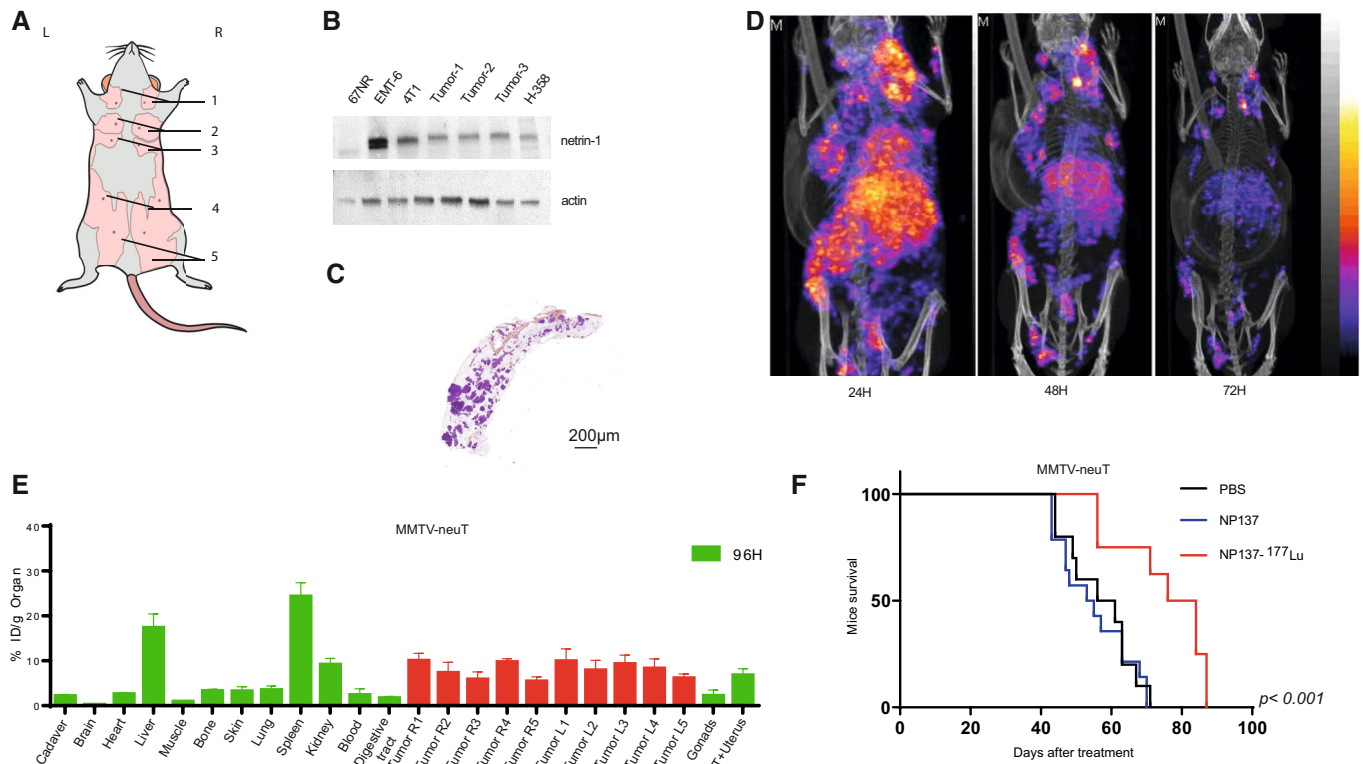


Figure 5. Detection of early tumor lesions and treatment of physiological tumors.

A Schematic representation and location of the 10 mammary glands in mice.

B Detection of netrin-1 expression in the MMTV/neuT model by immunoblots (Tumor 1 to 3).

C H&S immunohistochemistry in formalin-fixed paraffin-embedded mammary glands of MMTV/neuT mice. Scale bar represents 200 μ m.

D Maximum Intensity Projection of Tomographic scintigraphy and X-ray CT of the whole body of a transgenic MMTV/neuT mouse to develop mammary tumors, acquired 24, 48, and 72 h after injection of NP137-NODAGA-¹¹¹In.

E Biodistribution properties of NP137-NODAGA-¹¹¹In in MMTV/neuT mice at 96 h (3 mice) and measured for all organs. Radioactivity incorporation was quantified by the percentage of the injected dose *per* gram of organ. Error bars indicate s.d.

F NP137-¹⁷⁷Lu enhances MMTV/neuT mouse survival. Mice were treated at 3.5 months with PBS, DOTA-NP137, or NP137-¹⁷⁷Lu. Kaplan-Meier survival curves of mice treated or not with NP137 and considered as dead when cumulative tumors volume reached 2,000 mm³. Mantel-Cox test; $n = 10$ animals/group for PBS; $n = 14$ animals/group for DOTA-NP137; $n = 8$ animals/group for NP137-¹⁷⁷Lu; $P < 0.001$ between PBS and NP137-¹⁷⁷Lu and between DOTA-NP137 and NP137-¹⁷⁷Lu.

Source data are available online for this figure.

also provided us with the perspective of moving forward to targeted radiotherapy. To identify the best molecule for SPECT imaging, we designed three different agents based on the clinically used NP137 antibody: a complete NP137-IgG1, NP137-F(ab')₂, and NP137-Fab. Even though all three molecules bound strongly to netrin-1, a significant difference in their *in vivo* accumulation within tumors was observed; notably, a higher penetration of NP137-IgG1 and NP137-F(ab')₂. This difference was likely due to the half-life and stability of the molecules when injected into the bloodstream. The complete NP137-IgG1 form displayed the best accumulation within tumors and the most promising results for transfer to the clinic as a companion test for the ongoing clinical trial to perform therapy response prediction to NP137 and monitor netrin-1 expression during therapy. This tumor uptake is globally linked also to netrin-1 protein levels, the antibody is not retained by 67NR tumors that do not express the target, whereas it is concentrated in the 3 tumor lines tested, that express netrin-1 at different levels. Other parameters will have to be analyzed in future studies; tumor uptake is higher in 4T1 than in EMT6, which expresses more netrin-1 *in vitro*. We can

assume that the composition of the extracellular matrix plays a role in the retention and diffusion of netrin-1. Other parameters also influence the binding of radiolabeled antibodies, such as the tumor micro-environment, and perfusion by blood and lymphatic vessels. It has also been described that the genetic background of animal models, in particular in immunodeficient animals, severely modifies tumor uptake, probably because the lack of circulating antibodies in these animals causes an injected antibody to be taken up by Fc receptors, and therefore strongly lowers its half-life, diffusion and thus tumor incorporation (Sharma *et al*, 2018). This hypothesis may explain why we see less uptake of NP137-¹¹¹In in the human H358 model. Based on our results, we can state that there is a minimal off-target signal with NP137-¹¹¹In in our preclinical models, as evidenced by the low tumor incorporation in the netrin-1-negative tumor model 67NR and in other organs. These results are in line with the fact that netrin-1 is not widely expressed in adult noncerebral tissues and a knockdown of netrin-1 in adult mice does not show any drastic phenotype. Instead, netrin-1 seems specifically re-expressed in tumoral tissues. The axonal guidance cue netrin-1 is expressed in the adult central

nervous system. However, selecting the full-length antibody may have prevented penetration through the blood–brain barrier as there was no radioactivity detected in the brains of the animal models employed, suggesting a prevention of brain toxicity. More generally, targeting of proteins expressed by developmental genes that are re-expressed during tumor formation seems to be key to improving the specificity and reliability of tumor imaging.

Based on the strong tumor incorporation of anti-netrin-1 mAb in netrin-1-positive tumors, we designed a new molecule, in which we fused NP137-DOTA with lutetium-177 to form NP137-¹⁷⁷Lu. Lutetium-177 is a β^- emitter able to deliver a strong dose of radiation in a range of 1.8 mm within the tumor tissue (Strosberg *et al*, 2017; Sartor *et al*, 2021). Upon the specific accumulation of NP137-¹⁷⁷Lu in the netrin-1-positive tumor models, we noted a significant decrease in tumor growth, which was correlated with better survival of tumor-bearing mice and confirmed that our strategy based on localized delivery of radiation to netrin-1-positive tumors in living animals was effective for tumor treatment. Of interest, in some of the models used here, for example, the EMT6-engrafted model, NP137 as a single agent failed to show antitumor activity while a single NP137-¹⁷⁷Lu injection was associated with tumor growth-inhibiting effects. The phase I and now ongoing phase II clinical trials of NP137 showed an excellent safety profile of NP137 and basically no toxicity related to target inhibition. Studies have shown that ¹⁷⁷Lu-based radiopharmaceuticals also have generally low side effects compatible with clinical development. Therefore, the combination of NP137 and ¹⁷⁷Lu to generate the radiotherapeutic compound NP137-¹⁷⁷Lu provides an optimal treatment approach with high potential for clinical translation for use in patients with refractory tumors. Although our study showed no clear difference between DOTA and NODAGA, the choice of a single chelator will be important for faster clinical development to perform the imaging and therapy phases with the same NP137-DOTA/NODAGA GMP batch.

Our study therefore provides important proof-of-concept data on the multifaceted use of NP137 not only for diagnostic but also therapeutic purpose and the immediate possibility to transfer ¹¹¹In- and ¹⁷⁷Lu-radiolabeled NP137 to humans.

Materials and Methods

Human tumor samples

The usage of all patient tumor samples was conducted according to the rules of WMA Declaration of Helsinki. The Belmont Report and the Ethic Committee of the Medical Board (CHU Lyon) agreed to these investigations. Informed consent was obtained from all patients. The collection of samples has been performed on primary tumors from patients treated at the Hospices civils de Lyon and specimens are conserved in the pathology department.

Tumor cell lines

4T1 and 67NR murine mammary carcinoma cells and human pulmonary adenocarcinoma H358 cells were obtained from ATCC and cultured in RPMI-1640 (ATCC) medium supplemented with 10% fetal bovine serum (FBS, Gibco) and antibiotics (streptomycin and

penicillin). EMT6 murine mammary carcinoma cells were obtained from ATCC and cultured in Eagle Minimum Essential Medium (EMEM, ATCC) supplemented with 10% FBS and antibiotics (streptomycin and penicillin). The cells were maintained in culture at 37°C under a humidified atmosphere composed of 20% O₂ and 5% CO₂ as previously described (Gibert *et al*, 2014).

The cells have been tested for mycoplasma infections for use in mice but were not authenticated prior to the submission of the article.

Western blots

Confluent cells were washed with cold PBS and lysed in lysis buffer (Tris 10 mM pH 7.6; SDS 5%; glycerol 10%; Triton X-100 1%, DTT 100 mM). After sonication, proteins were assayed using the Pierce 660 nm protein assay reagent (Thermo Fisher Scientific), run on 4–15% SDS–polyacrylamide gels (Bio-Rad), and transferred to nitrocellulose membranes using the Trans-Blot Turbo Transfer (Bio-Rad). The membranes were blocked for 1 h at room temperature with 5% fat-free milk powder for primary and with 5% bovine serum albumin (BSA). Staining was performed overnight with a primary antibody: netrin-1 antibody (1/1000 dilution; Ab126729, Abcam); actin antibody (1/2500 dilution Sigma, A3854). After washing, the membranes were incubated with a secondary rabbit anti-goat antibody coupled with horse radish peroxidase (HRP) for 1 h at room temperature. The West Dura (Pierce) chemiluminescence system was used to intensify the signal. Imaging was performed using Chemidoc Touch (Bio-Rad).

For the binding of netrin-1 in cellular matrix, 1×10^6 cells were plated in a 100 mm³ culture dish. 24 h after, cells were treated with 200 μ g/ml of heparin sodium salt from porcine intestinal mucosa (H3147-100KU, Sigma) diluted in 4 ml of medium without FBS. After one night of incubation, the supernatant was collected. Centrifuge filters were used to concentrate the protein in the collected supernatant. Pierce 660 nm protein assay reagent (22660, Thermo Fisher Scientific) was then used to determine the concentration of protein, 30 μ g of proteins was loaded on immunoblots.

In vivo preclinical models

The human monoclonal antibody NP137 (anti-netrin-1) was kindly provided by Netris Pharma (Lyon, France). Female Balbc/J mice, 8 weeks old, were obtained from Janvier Laboratories (Le Genest-Saint-Isle, France). All syngeneic breast cancer cells, 1×10^6 of EMT6, 5×10^5 of 4T1, and 1×10^6 of 67-NR, were subcutaneously transplanted into the dorsal flank of 8-week-old female Balbc/J mice. The mice were maintained under specific pathogen-free conditions (Anican, Lyon, France, and Imthernat facility, HCL Lyon, France) and stored in sterilized cages with filter lids. Their care and accommodation were in accordance with European and French institutional guidelines as defined by the local CECCAP Ethics Committee (CECCAPP_CLB_2020_024; Jiang *et al*, 2021). The human cell lines H358 (1×10^6 cells) were grafted into 8-week-old female NMRI immunocompromised mice and maintained under the same conditions.

Tumor volumes were assessed by measuring two perpendicular tumor diameters with a caliper three times a week. Individual tumor volumes were calculated as follows: $V = (a \cdot b^2)/2$; a being the largest diameter, b the smallest. When tumors reached a volume of

200–400 mm³, mice were randomly separated into groups of animals and treated with either ¹¹¹In-NODAGA-NP137, ¹¹¹In-NODAGA-NP137-Fab, ¹¹¹In-NODAGA-NP137-F(ab')₂, or ¹¹¹In-DOTA-NP137 (see [Materials and Methods](#) below for their production) and subjected to live imaging. For all experiments, mice were anesthetized using a gas protocol (isoflurane/oxygen [2.5%/2.5%]).

Anticancer treatments with either PBS, NP137-DOTA, or NP137-DOTA-¹⁷⁷Lu (called hereafter NP137-¹⁷⁷Lu) were conducted in one single injection (when tumors reached 50–100 mm³) with 7–10 MBq/mouse of lutetium-177. Tumor growth was monitored until tumor volume reached 2,000 mm³, which was the endpoint of the protocol for sacrifice and *ex vivo* analysis. The animals were at this stage considered dead in all the Kaplan–Meier survival analyses.

For immunohistochemistry (IHC) analysis, tumors were collected 10 days after treatment, embedded in paraffin, and sectioned into 10 μm slices. Tumor histology was studied after hematoxylin-phloxinB-saffron, Ki67, and cleaved caspase-3 staining of tumor slides at the Pathology-Research Platform (CRCL-France).

MMTV-NeuT mice were generated in the facilities of Anican (Lyon), France. Females spontaneously developed numerous tumor foci in the mammary glands (Guy *et al*, 1992). Imaging was performed under the same conditions as above. For the therapy part, mice were treated with either PBS, control antibody, or NP137-¹⁷⁷Lu 3 months after birth. Survival was determined when the cut-off point of 2,000 mm³ of cumulative tumor volume was reached.

Conjugation

1 ml of the anti-netrin-1 antibody, NP137 (10 mg/ml), was transferred to an Amicon Ultra-15 50 k (UFC905096). Diafiltration against 0.1 M phosphate buffer (pH 8.0) treated with 1.2 g/l of Chelex 100 was then performed. This step was repeated seven times using 10 ml of 0.1 M phosphate buffer (pH 8.0) solution with a 25 min centrifugation at 4,900 rpm between each wash. NP137 concentration was then calculated with a nanodrop. The concentration of the antibody was adjusted in order to reach 50 μM. Stock solution of DOTA-NHS ester or NODAGA (1,4,7-triazacyclononane, 1-glutaric acid-44,7 acetic acid)-NHS ester (Chematech (C084)) was dissolved in ultrapure water at a concentration of 10 mg/ml (= 13.13 mM). 50 μM of NP137 was combined with required DOTA-NHS or NODAGA-NHS solution at a ratio of 1:25. Reactions were conducted at room temperature for 4 h and transferred to 4°C for continuous end-over-end mixing overnight. Diafiltration against PBS (Chelex) was then performed. This step was repeated seven times using 10 ml of PBS (Chelex) with a 25 min centrifugation at 4,900 rpm between each wash. DOTA/NODAGA-NP137 concentration was calculated with a nanodrop.

Generation of Fab and F(ab')₂ fragments and synthesis of DOTA and NODAGA-immunoconjugates

Proteolytic fragments of NP137 were generated using Pierce™ Fab and F(ab')₂ Preparation kits according to the manufacturer's instructions (ref 44985 and 44988, Thermofisher, France). For conjugation of DOTA or NODAGA to surface lysine residues, NP137 and its fragments were conjugated at a molar ratio of 25:1 chelate:antibody with DOTA-NHS-ester or NODAGA-NHS ester (Chematech, Dijon, France) in metal-free buffers prepared using Chelex-100 resin (Bio-

Rad, 142-1253). Briefly, 50 μM antibodies were exchanged by diafiltration against 0.1 M phosphate buffer (pH 8.0), then mixed with 1.25 mM DOTA-NHS-ester or NODAGA-NHS-ester for 4 h at 25°C on a rotator. The reaction was placed at 4°C for continuous end-over-end mixing overnight. Excess chelator was removed by diafiltration against PBS. Immunoconjugates were stored at 4°C.

Radiolabeling

NODAGA-NP137, NODAGA-NP137-Fab, or NODAGA-NP137-F(ab')₂ (40–70 μl, 5 mg/ml) were radiolabeled by adding 400 μl of acetate buffer 0.1 M pH 5.5 and 40–400 MBq of high purity ¹¹¹InCl₃ in hydrochloric acid solution (Curium, Petten, The Netherlands). The mixture was incubated for 30 min at 37°C. The reaction was stopped with 100 μl of a 1 mM aqueous solution of DTPA. Free ¹¹¹In was removed using a PD-10 column (GE Healthcare, GE17-0851-01). The column was first washed with 15 ml of 0.1 M pH 5.5 acetate buffer, the labeled mixture was then loaded onto the column and eluted with acetate buffer. ¹¹¹In-NODAGA-NP137, ¹¹¹In-NODAGA-NP137-Fab or ¹¹¹In-NODAGA-NP137-F(ab')₂ were first eluted. The radiochemical purity (RCP) of each 0.5 ml fraction was evaluated using ITLC-SG (Biodex, Tec-control black) and 50 mM citrate buffer (pH 5.5) as the mobile phase and was assayed with a gamma isotope TLC analyzer (Scan-Ram, Lablogic, Villebon-sur-Yvette, France). Radiolabeled NP137 remained at the origin while unbound ¹¹¹In³⁺ or ¹¹¹In-DTPA complex migrated with an Rf of 0.9–1. The fractions with the highest radiochemical purity (RCP) were pooled.

For stability testing, an aliquot of radiolabeled ¹¹¹In-NODAGA-NP137, ¹¹¹In-NODAGA-NP137-Fab or ¹¹¹In-NODAGA-NP137-F(ab')₂ was incubated at 37°C in 2 ml PBS (pH 7.4) and the RCP was evaluated using ITLC-SG and 0.1 M citrate buffer pH 5.5 as the mobile phase.

¹⁷⁷Lu-radiolabeled DOTA was obtained according to the procedure described above starting from ¹⁷⁷LuCl₃ in hydrochloric acid (Endolucin®, ITM, Germany).

Biodistribution studies

1–10 MBq of radiolabeled ¹¹¹In-NODAGA-NP137, ¹¹¹In-NODAGA-NP137-Fab, ¹¹¹In-NODAGA-NP137-F(ab')₂ or ¹¹¹In DOTA-NP137, in a maximum volume of 100 μl were injected intravenously (IV) into tumor-bearing mice (*n* = 3 or 4 for each group). Mice were then sacrificed at defined times: 4, 24, 48, 72, and 96 h after injection by cervical dislocation. Tissues of interest (blood, heart, lungs, gonads, bones, spleen, kidneys, muscle, digestive tract, brain, and skin) were removed, weighed and the radioactivity was counted for 5 min in a gamma scintillation counter (Wizard® gamma counter, Perkin Elmer, USA). Urine and feces were collected in an individual metabolic cage for housing and counting. Tissue distribution was expressed as a percentage of the injected dose *per* gram (%ID/g). Renal and hepatobiliary eliminations were expressed as cumulative radioactivity under the total activity injected.

Imaging

Image acquisition was performed using a Nano-SPECT/CT system for small animals (Bioscan, Washington, DC, USA). This system consists of four detectors (215 × 230 mm² NaI, 33 PMTs) equipped with interchangeable multi-pinhole collimators. SPECT/CT

acquisitions were performed after IV injection of 10–15 MBq of radiolabeled molecules at different times: 24, 48, 72, and 96 h. CT (55 kVp tube voltage, 500 ms exposure time, and 180 projections) and SPECT/CT acquisitions were done in tumor-bearing anesthetized mice in a pron position, placed on a temperature-controlled bed (Minerve, Esternay, France), in order to maintain body temperature (set at 37°C). Image acquisition was performed for 40 min with two 15% windows centered on the two peaks 171 and 245 keV of ^{111}In . All images were reconstructed and analyzed using the InVivoScope software (Bioscan, Washington, DC, USA).

BioLayer interferometry

The affinity of the antibody fragments for netrin-1 was determined by biolayer interferometry using the OctetRed96 system (FortéBio) at 30°C with constant shaking at 1,000 rpm in PBS, 0.02% Tween-20, 0.1% BSA (binding buffer or BB). Briefly, recombinant human netrin-1 (R&D)-coated HIS1K biosensors were incubated with different concentrations of antibody or fragments, and the association was observed for 5 min. Biosensors were then incubated further in BB for 5 min to observe dissociation of the complex. Binding kinetics were evaluated with ForteBio Octet RED Evaluation software 6.1 using a 1:1 binding model to derive K_{on} , K_{off} , and K_{d} values.

For netrin-1 binding within matrix proteins, all interactions were analyzed at 30°C with constant shaking at 1,000 rpm in BB. Netrin-1-coated-HIS1K biosensors were incubated with an increasing concentration series of m-Laminin-I (3.12, 6.25, 12.5, 25, 50, 100 nM) and binding was observed for 5 min at 30°C. Netrin-1-coated-AHC biosensors were incubated with an increasing concentration series of hIntegrin, hGlypican-1, hFibronectin, hVitronectin, hLumican, and hFLRT-1 (3.12, 6.25, 12.5, 25, 50, 100 nM) and binding was observed for 5 min at 30°C. Biosensors were then incubated further in BB for 5 min to observe dissociation of the complex.

Autoradiography

NP137- ^{111}In uptake in tumors was analyzed by autoradiography in Balbc/j mice bearing 4T1 and EMT6 xenografts. 72 h after intravenous injection of NP137- ^{111}In (7.67 ± 3.03 MBq), mice (EMT6 mice $n = 3$, 4T1 mice $n = 5$) were sacrificed using CO_2 chambers. Whole bodies were immediately frozen in liquid nitrogen. Sections (40 μm) were cut at 100- μm intervals; sagittal slices were exposed after drying to a Biospace β Imager (Biospace Mesures, Paris, France) for 6 h. Autoradiography imaging was performed at “*In Vivo* Imaging in Auvergne” (IVIA) facility (<https://doi.org/10.18145/ivia>).

Stability assays

For stability testing, an aliquot of the purified NP137- ^{177}Lu was incubated at 37°C in 2 ml PBS (pH 7.4). RCP was evaluated using ITLC-SG (Biodex, Tec-control black) and citrate buffer 100 mM (pH 5.5) as the mobile phase. NP137- ^{177}Lu remained at the origin whereas unbound $^{177}\text{Lu}^{3+}$ migrated with an Rf of 0.9–1.

Statistical analyses

Randomization was done for the animals to homogenize the groups around 100 mm^3 of tumor volume for the NP137- ^{177}Lu treatments.

The paper explained

Problem

In oncology, despite their name, targeted therapies are often given without patient prescreening. Immunohistochemistry, the gold standard for tumor diagnosis, is largely conducted on the primary tumor, and this diagnosis may vary or evolve once metastases appear at a much later stage, including when no primary tumor is present anymore. Near-real-time diagnostic approaches are therefore urgently needed.

Results

Using netrin-1 and its blocking antibody as a proof-of-concept for tumor therapy, we were able to visualize this tumor cell-specific protein by nuclear imaging. We used this finding to design a near-real-time companion test for netrin-1 therapy. Tumor incorporation of anti-netrin-1 antibody being highly efficient, we created a second therapeutic molecule by fusing this antibody to Lutetium 177, a radioelement capable of destroying cancer cells upon exposure. Mechanistically, we demonstrated that netrin-1, although secreted, is not as diffusible as previously described but remains trapped in the extracellular matrix and microenvironment of cancer cells, justifying its potential as a target for vectorized radiotherapy.

Impact

Netrin-1 and more generally matrix-embedded proteins are promising targets for both molecular imaging and radioimmunotherapy.

There were no exclusion criteria, except absence of tumors. The experiments were not blinded.

All statistical analyses were performed using the GraphPad Prism software (San Diego, California). Statistical (non/parametric) tests: Mann–Whitney (*U*-test), ANOVA, or unpaired Student *T*-test were specified within the text. Survival curves were produced according to the Kaplan–Meier method. Data were analyzed with a Mantel–Cox test. *n* defines the total number of replicates. All statistical tests were two-sided and are specified in the text of the manuscript or in figure legends.

Data availability

This study includes no data deposited in external repositories.

Expanded View for this article is available [online](#).

Acknowledgements

We thank B. Manship for proofreading the manuscript. This work was supported by institutional grants from Cancéropole Clara Oncostarter and PDC-Clara grants (BG, DK), INCa/DGOS-PRT-K 2019 (DK, PM, BG), ANR-JCJC (BG), ANR Chaire Industrielle (BG), SIRIC LYRICAN (INCa-DGOS-Inserm_12563 [for BG, DK, DS], la Ligue contre le cancer [PM], INCA [PM, BG, DK], and Institut Convergence Plascan [PM]).

Author contributions

Patrick Mehlen: Supervision; writing – original draft; writing – review and editing. **David Kryza:** Formal analysis; supervision; funding acquisition; investigation; project administration. **Jennifer Wischhusen:** Conceptualization; data curation; formal analysis; investigation; writing – original draft; writing – review and editing. **Mathieu Richaud:** Data curation;

formal analysis; investigation. **Maëva Hervieu:** Data curation; formal analysis; investigation. **Jacqueline Sidi Boumedine:** Resources; data curation; formal analysis; methodology. **Jean-Guy Delcros:** Data curation; formal analysis. **Sophie Besse:** Formal analysis; investigation. **Thomas Baudier:** Data curation; funding acquisition. **Pierre-Alexandre Laval:** Data curation; funding acquisition; investigation. **Silvia Breusa:** Data curation; investigation. **Erwan Boutault:** Data curation; investigation; methodology. **Hugo Clermidy:** Data curation; formal analysis. **Nicolas Rama:** Formal analysis; investigation. **Benjamin Ducarouge:** Data curation; investigation. **Mojgan Devouassoux-Shisheboran:** Resources; investigation. **Jean-Michel Chezal:** Conceptualization; supervision; investigation. **Anne-Laure Giraudet:** Methodology. **Thomas Walter:** Methodology. **David Sarrut:** Conceptualization; data curation; formal analysis; investigation; methodology; project administration. **Benjamin Gibert:** Conceptualization; supervision; funding acquisition; writing – original draft; project administration; writing – review and editing.

Disclosure and competing interests statement

BD and PM declare to have a conflict of interest as, respectively, employee (BD) and shareholder (PM) of Netris Pharma.

References

- Akino T, Han X, Nakayama H, McNeish B, Zurakowski D, Mammoto A, Klagsbrun M, Smith E (2014) Netrin-1 promotes medulloblastoma cell invasiveness and angiogenesis, and demonstrates elevated expression in tumor tissue and urine of patients with pediatric medulloblastoma. *Cancer Res* 74: 3716–3726
- Barnault R, Verzeroli C, Fournier C, Michelet M, Redavid AR, Chicherova I, Plissonnier M, Adrait A, Khomich O, Chapus F *et al* (2022) Hepatic inflammation elicits production of proinflammatory netrin-1 through exclusive activation of translation. *Hepatology* 76: 1345–1359
- Belle M, Godefroy D, Dominici C, Heitz-Marchaland C, Zelina P, Hellal F, Bradke F, Chédotal A (2014) A simple method for 3D analysis of immunolabeled axonal tracts in a transparent nervous system. *Cell Rep* 9: 1191–1201
- Boneschanski L, Nakayama H, Eisenga M, Wedel J, Klagsbrun M, Irimia D, Briscoe DM (2016) Netrin-1 augments chemokinesis in CD4+ T cells *in vitro* and elicits a proinflammatory response *in vivo*. *J Immunol* 197: 1389–1398
- Brisset M, Grandin M, Bernet A, Mehlen P, Hollande F (2021) Dependence receptors: new targets for cancer therapy. *EMBO Mol Med* 13: e14495
- Cassier P, Eberst L, Garin G, Courbebaisse Y, Terret C, Robert M, Frenel J-S, Depil S, Delord J-P, Perol D *et al* (2019) A first in human, phase I trial of NP137, a first-in-class antibody targeting netrin-1, in patients with advanced refractory solid tumors. *Ann Oncol* 30: v159
- Dal Corso A, Gébleux R, Murer P, Soltermann A, Neri D (2017) A non-internalizing antibody-drug conjugate based on an anthracycline payload displays potent therapeutic activity *in vivo*. *J Control Release* 264: 211–218
- Delloye-Bourgeois C, Fitamant J, Paradisi A, Cappellen D, Douc-Rasy S, Raquin M-A, Stupack D, Nakagawara A, Rousseau R, Combaret V *et al* (2009) Netrin-1 acts as a survival factor for aggressive neuroblastoma. *J Exp Med* 206: 833–847
- Dominici C, Moreno-Bravo JA, Puiggros SR, Rappeneau Q, Rama N, Vieugue P, Bernet A, Mehlen P, Chédotal A (2017) Floor-plate-derived netrin-1 is dispensable for commissural axon guidance. *Nature* 545: 350–354
- Fabre M, Ferrer C, Domínguez-Hormaetxe S, Bockorny B, Murias L, Seifert O, Eisler SA, Kontermann RE, Pfizenmaier K, Lee SY *et al* (2020) OMTX705, a novel FAP-targeting ADC demonstrates activity in chemotherapy and pembrolizumab-resistant solid tumor models. *Clin Cancer Res* 26: 3420–3430
- Fazeli A, Dickinson SL, Hermiston ML, Tighe RV, Steen RG, Small CG, Stoeckli ET, Keino-Masu K, Masu M, Rayburn H *et al* (1997) Phenotype of mice lacking functional deleted in colorectal cancer (dcc) gene. *Nature* 386: 796–804
- Fitamant J, Guenebeaud C, Coissieux M-M, Guix C, Treilleux I, Scoazec J-Y, Bachelot T, Bernet A, Mehlen P (2008) Netrin-1 expression confers a selective advantage for tumor cell survival in metastatic breast cancer. *Proc Natl Acad Sci USA* 105: 4850–4855
- Gibert B, Mehlen P (2015) Dependence receptors and cancer: addiction to trophic ligands. *Cancer Res* 75: 5171–5175
- Gibert B, Delloye-Bourgeois C, Gattolliat C-H, Meurette O, Le Guernevel S, Fombonne J, Ducarouge B, Laval F, Bouhallier F, Creveaux M *et al* (2014) Regulation by miR181 family of the dependence receptor CDON tumor suppressive activity in neuroblastoma. *J Natl Cancer Inst* 106: dju318
- van Gils JM, Derby MC, Fernandes LR, Ramkhalawon B, Ray TD, Rayner KJ, Parathath S, Distel E, Feig JL, Alvarez-Leite JI *et al* (2012) The neuroimmune guidance cue netrin-1 promotes atherosclerosis by inhibiting the emigration of macrophages from plaques. *Nat Immunol* 13: 136–143
- Grandin M, Mathot P, Devailly G, Bidet Y, Ghantous A, Favrot C, Gibert B, Gadot N, Puisieux I, Hecceg Z *et al* (2016a) Inhibition of DNA methylation promotes breast tumor sensitivity to netrin-1 interference. *EMBO Mol Med* 8: 863–877
- Grandin M, Meier M, Delcros JG, Nikodemus D, Reuten R, Patel TR, Goldschneider D, Orriss G, Krahn N, Bousouar A *et al* (2016b) Structural decoding of the netrin-1/UNC5 interaction and its therapeutical implications in cancers. *Cancer Cell* 29: 173–185
- Guy CT, Webster MA, Schaller M, Parsons TJ, Cardiff RD, Muller WJ (1992) Expression of the neu protooncogene in the mammary epithelium of transgenic mice induces metastatic disease. *Proc Natl Acad Sci USA* 89: 10578–10582
- Jiang S, Richaud M, Vieugué P, Rama N, Delcros J, Siouda M, Sanada M, Redavid A, Ducarouge B, Hervieu M *et al* (2021) Targeting netrin-3 in small cell lung cancer and neuroblastoma. *EMBO Mol Med* 13: e12878
- Kennedy TE (2006) Axon guidance by diffusible chemoattractants: a gradient of netrin protein in the developing spinal cord. *J Neurosci* 26: 8866–8874
- Lindner T, Loktev A, Giesel F, Kratochwil C, Altmann A, Haberkorn U (2019) Targeting of activated fibroblasts for imaging and therapy. *EJNMMI Radiopharm Chem* 4: 16
- Mehlen P, Delloye-Bourgeois C, Chédotal A (2011) Novel roles for slits and netrins: axon guidance cues as anticancer targets? *Nat Rev Cancer* 11: 188–197
- Ozmadenci D, Féraud O, Markossian S, Kress E, Ducarouge B, Gibert B, Ge J, Durand I, Gadot N, Plateroti M *et al* (2015) Netrin-1 regulates somatic cell reprogramming and pluripotency maintenance. *Nat Commun* 6: 7398
- Paradisi A, Creveaux M, Gibert B, Devailly G, Redoulez E, Neves D, Cleysac E, Treilleux I, Klein C, Niederfellner G *et al* (2013) Combining chemotherapeutic agents and netrin-1 interference potentiates cancer cell death. *EMBO Mol Med* 5: 1821–1834
- Ramkhalawon B, Hennessy EJ, Ménager M, Ray TD, Sheedy FJ, Hutchison S, Wanschel A, Oldebeken S, Geoffroy M, Spiro W *et al* (2014) Netrin-1 promotes adipose tissue macrophage retention and insulin resistance in obesity. *Nat Med* 20: 377–384

- Renders S, Svendsen AF, Panten J, Rama N, Maryanovich M, Sommerkamp P, Ladel L, Redavid AR, Gibert B, Lazare S et al (2021) Niche derived netrin-1 regulates hematopoietic stem cell dormancy via its receptor neogenin-1. *Nat Commun* 12: 608
- Ritt P (2022) Recent developments in SPECT/CT. *Semin Nucl Med* 52: 276–285
- Sartor O, de Bono J, Chi KN, Fizazi K, Herrmann K, Rahbar K, Tagawa ST, Nordquist LT, Vaishampayan N, El-Haddad G et al (2021) Lutetium-177–PSMA-617 for metastatic castration-resistant prostate cancer. *N Engl J Med* 385: 1091–1103
- Serafini T, Kennedy TE, Gaiko MJ, Mirzayan C, Jessell TM, Tessier-Lavigne M (1994) The netrins define a family of axon outgrowth-promoting proteins homologous to *C. elegans* UNC-6. *Cell* 78: 409–424
- Serafini T, Colamarino SA, Leonardo ED, Wang H, Beddington R, Skarnes WC, Tessier-Lavigne M (1996) Netrin-1 is required for commissural axon guidance in the developing vertebrate nervous system. *Cell* 87: 1001–1014
- Sharma SK, Chow A, Monette S, Vivier D, Pourat J, Edwards KJ, Dilling TR, Abdel-Atti D, Zeglis BM, Poirier JT et al (2018) Fc-mediated anomalous biodistribution of therapeutic antibodies in immunodeficient mouse models. *Cancer Res* 78: 1820–1832
- Strosberg J, El-Haddad G, Wolin E, Hendifar A, Yao J, Chasen B, Mittra E, Kunz PL, Kulke MH, Jacene H et al (2017) Phase 3 trial of ¹⁷⁷Lu-Dotatate for midgut neuroendocrine tumors. *N Engl J Med* 376: 125–135
- Tagawa ST, Milowsky MI, Morris M, Vallabhajosula S, Christos P, Akhtar NH, Osborne J, Goldsmith SJ, Larson S, Taskar NP et al (2013) Phase II study of Lutetium-177-labeled anti-prostate-specific membrane antigen monoclonal antibody J591 for metastatic castration-resistant prostate cancer. *Clin Cancer Res* 19: 5182–5191
- Varadarajan SG, Kong JH, Phan KD, Kao T-J, Panaitof SC, Cardin J, Eltzschig H, Kania A, Novitch BG, Butler SJ (2017) Netrin1 produced by neural progenitors, not floor plate cells, is required for axon guidance in the spinal cord. *Neuron* 94: 790–799.e3
- Wischhusen J, Wilson KE, Delcros J-G, Molina-Peña R, Gibert B, Jiang S, Ngo J, Goldschneider D, Mehlen P, Willmann JK et al (2018) Ultrasound molecular imaging as a non-invasive companion diagnostic for netrin-1 interference therapy in breast cancer. *Theranostics* 8: 5126–5142
- Yap ML, McFadyen JD, Wang X, Ziegler M, Chen Y-C, Willcox A, Nowell CJ, Scott AM, Sloan EK, Hogarth PM et al (2019) Activated platelets in the tumor microenvironment for targeting of antibody-drug conjugates to tumors and metastases. *Theranostics* 9: 1154–1169



License: This is an open access article under the terms of the [Creative Commons Attribution](#) License, which permits use, distribution and reproduction in any medium, provided the original work is properly cited.