



HAL
open science

Origins of old lineages in New Caledonia: A geologically informed test of the island-hopping hypothesis

Julien Malem, Tony Robillard, Dominique Cluzel, Loïc Bellier, Romain Nattier, Philippe Grandcolas, Frédéric Legendre

► To cite this version:

Julien Malem, Tony Robillard, Dominique Cluzel, Loïc Bellier, Romain Nattier, et al.. Origins of old lineages in New Caledonia: A geologically informed test of the island-hopping hypothesis. *Journal of Biogeography*, 2023, 50 (9), pp.1587-1601. 10.1111/jbi.14673 . hal-04198375v1

HAL Id: hal-04198375

<https://cnrs.hal.science/hal-04198375v1>

Submitted on 23 Dec 2023 (v1), last revised 9 Nov 2023 (v2)

HAL is a multi-disciplinary open access archive for the deposit and dissemination of scientific research documents, whether they are published or not. The documents may come from teaching and research institutions in France or abroad, or from public or private research centers.

L'archive ouverte pluridisciplinaire **HAL**, est destinée au dépôt et à la diffusion de documents scientifiques de niveau recherche, publiés ou non, émanant des établissements d'enseignement et de recherche français ou étrangers, des laboratoires publics ou privés.

1 **Origins of old lineages in New Caledonia: a geologically-informed test of**
2 **the island-hopping hypothesis**

3
4
5
6 **Julien Malem^{1*}, Tony Robillard¹, Dominique Cluzel², Loïc Bellier^{1,3}, Romain Nattier¹,**
7 **Philippe Grandcolas^{1±}, Frédéric Legendre^{1±}**

8
9 ¹Institut de Systématique, Evolution, Biodiversité (ISYEB), Muséum national d'Histoire
10 naturelle, CNRS, Sorbonne Université, EPHE, Université des Antilles, CP 50, 57 rue Cuvier,
11 F-75005 Paris, France

12 ²Institut des Sciences Exactes et Appliquées, Université de la Nouvelle-Calédonie, BP R4
13 Nouméa, Nouvelle-Calédonie

14 ³Université de Rennes, CNRS, Géosciences Rennes, UMR 6118, 263 av. Général Leclerc,
15 35042 Rennes, France

16
17 [±]Equal contribution

18 *Corresponding author: Orcid-ID: 0000-0003-2764-2444

24 **Abstract**

25

26 **Aim:** Although New Caledonia is now considered an oceanic island that emerged ca. 60 Ma,
27 a few terrestrial clades are significantly older, raising the question of the origin of these
28 groups. Classically, old lineages on more recent islands are hypothesized to originate through
29 a process of hopping on now-vanished islands (i.e. island-hopping hypothesis) or other
30 territories. We aim to test this hypothesis by studying a group of cockroaches with several
31 lineages found in NC.

32 **Location:** New Caledonia, New Zealand, Australia

33 **Taxon:** Insects: Blattodea

34 **Methods:** We generated a dated phylogeny for blattid cockroaches (Blattidae and
35 Tryonicidae) using Bayesian inference along with fossil calibrations. We reviewed studies on
36 the paleogeography of the Southwest Pacific region, including hypotheses about the existence
37 of yet-to-be-discovered past islands, and constructed biogeographic tests accordingly. We
38 computed ancestral area estimation under different models in *BioGeoBEARS* (DEC,
39 BAYAREALIKE, DIVALIKE, with or without +J) to test the role of an island-hopping
40 hypothesis in the establishment of NC blattid fauna.

41 **Results:** We find divergence times older than 60 Ma for two NC clades. We show that these
42 "old" endemic lineages can partially be explained by indirect dispersal from Australia or New
43 Zealand through now disappeared islands. Alternative hypotheses suggest multiple
44 independent colonizations of NC from Antarctica or Australia.

45 **Main conclusions:** Our results indicate that island-hopping may explain the presence of old
46 groups in NC. The island-hopping hypothesis is nonetheless only supported for a period-area
47 from which geological evidence is ambiguous. Our work highlights both the fruitful
48 interactions between geology and biogeography and the underlying difficulties. The multiple
49 colonization events inferred for NC provide additional insights into the composite nature of
50 NC biota.

51

52 **Keywords:** relicts, paleoendemics, New Caledonia, paleogeography, historical biogeography,
53 phylogenetic dating, insects, stepping stones, BioGeoBEARS, competing hypotheses,
54 vanished islands

55

56 ***1. INTRODUCTION***

57

58 Once considered to be of Gondwanan vicariant origin, the biota of New Caledonia (NC) is
59 now understood as primarily resulting from relatively recent dispersals across the oceans,
60 following major geological events of emergence and submergence (Grandcolas et al., 2008;
61 Murienne, 2009; Grandcolas, 2017; Giribet & Baker, 2019). General submersion occurred
62 across Zealandia—a 4.9 Mkm² region of the southwest Pacific Ocean, made up of continental
63 crust, mostly submerged today, and also known as Tasmantis (e.g. Smith et al., 2007)—
64 during the Late Cretaceous–Paleocene. This general submersion (reviewed in Maurizot &
65 Campbell, 2020) argues for a NC biota younger than 60 Myrs. Although marine
66 sedimentation prevailed during most of the Paleogene, localized and short-lived emersions
67 occurred before the post-obduction final emersion of NC, which is poorly time-constrained
68 (30–25 Ma). This final emersion has been previously mentioned in the geological literature
69 (e.g. Aitchison et al., 1995; Cluzel et al., 2001, 2012; Pelletier, 2007) and therefore taken into
70 account by biologists to formulate biogeographic scenarios (e.g. Grandcolas et al., 2008;
71 Nattier et al., 2017). However, the duration of this last event remains uncertain due to the
72 absence of decisive geological record between -34 and -25 Ma (Maurizot & Campbell, 2020).
73 Consistent with evidence for a prolonged period of submergence precluding subsistence of a
74 terrestrial biota, NC is thus commonly seen as an oceanic or Darwinian island (Gillespie &
75 Roderick, 2002), with its biota perceived to have originated from de novo transoceanic
76 dispersals, and thus younger than 60 Myrs.

77 This modern view is further supported by several studies relying on phylogenetic dating,
78 which suggest relatively recent age estimates for NC taxa (Grandcolas et al., 2008; Nattier et
79 al., 2017; Baker et al., 2020), and by paleontological studies bringing a first view on the past
80 biota of the island (Garrouste et al., 2021). Nonetheless some terrestrial lineages have been
81 challenging this view and raised the question of the origin of “old” lineages—i.e. older than
82 37 Ma, or than 60 Ma to be in line with more recent geological evidence—on younger islands
83 (Grandcolas et al., 2014; Giribet & Baker, 2019). To decipher the origin of those “old”
84 lineages, the most frequent explanation is the island-hopping hypothesis (e.g., Gressitt, 1956;
85 Darlington, 1957; Carlquist, 1965; Heads, 2005, 2008; Ladiges & Cantrill, 2007). A variant
86 of the stepping-stone dispersal model, this hypothesis involves now vanished islands that
87 would have served as faunal refugia and stepping stones for colonization, before they
88 disappeared. The Gondwanan history and hectic regional geological context of NC would
89 point to this hypothesis. However, this island-hopping scenario is purely narrative in its

90 formulation and has only been tested indirectly, by dating clades with molecular studies to
91 infer whether they are older than the islands (Nattier et al., 2011, 2017; Grandcolas, 2017;
92 Magalhaes et al., 2021).

93 In this context, a better understanding of the origin of the NC biota amounts to a better
94 understanding of the origin of old lineages in NC, be they paleoendemics, relicts or revenant
95 clades (Gillespie & Roderick, 2002; Sharma & Wheeler, 2013; Grandcolas et al., 2014, 2008;
96 Grandcolas, 2017; Giribet & Baker, 2019). Some lineages of fig wasps (Cruaud et al., 2012),
97 harvestmen (Giribet et al., 2012), leaf beetles (Papadopoulou et al., 2013) and moths (Gibbs
98 & Lee, 2014) have been inferred to have radiated or split from their sister group prior to the
99 age of submersion and thus identified as old lineages for NC (e.g., Nattier et al., 2017).

100 Different biogeographic events have been suggested to explain this paradoxical situation, but
101 only *a posteriori*. Instead, we here embrace a hypothesis-driven study using *a priori* the latest
102 geological context and data about this geologically-complex region, to elucidate the
103 biogeographic events that might have allowed “old” lineages to colonize NC after its latest
104 proven emergence (i.e. 60 Ma). Specifically, we test competing biogeographic scenarios that
105 imply or not island-hopping events according to the geological record and its uncertainties.

106 In contrast with most islands of the Southwest Pacific, NC (as New Zealand) yields a
107 relatively old geological record, which may be divided into four periods: the Gondwanan
108 period (Permian to Early Cretaceous), the drifting period (Late Cretaceous to latest
109 Paleocene), the obduction period (Eocene) and the post-obduction period (Oligocene to
110 present) (Cluzel et al., 2012). It is now a common practice to include geological history into
111 biogeographic analyses, but biogeographic models can be further expanded (Ronquist &
112 Sanmartín, 2011) to strengthen hypothesis-driven research—see for instance Favre et al.
113 (2015) about the uplift of the Qinghai-Tibetan plateau. Thus, any evidence of now-vanished
114 islands at different geological times and in the vicinity of NC can be part of biogeographic
115 analyses, in a geologically-informed test of the island-hopping hypothesis. Here, we adopt a
116 ‘trans-disciplinary biogeographic’ approach (Antonelli et al., 2018) by summarizing this
117 evidence to incorporate it into biogeographic models that allow, or disallow, island-hopping
118 events.

119 To address the knowledge gap about the origin of “old” lineages in NC, we use the
120 geologically-informed context to formally test the island-hopping hypothesis on two
121 cockroach families: Blattidae and Tryonicidae. The most recent phylogenetic studies suggest
122 that these families are sister taxa and that their MRCA would date from the Early Cretaceous,
123 or alternatively, to the Late Triassic [e.g. 130-140 Ma in Bourguignon et al. (2018) and

124 Evangelista et al. (2019); 230 Ma in Legendre et al. (2015)]. The family Blattidae comprises
125 53 extant genera with a worldwide distribution (Princis, 1966; Grandcolas, 1996, 1997;
126 Beccaloni, 2014; Liao et al., 2019), while the family Tryonicidae comprises only two extant
127 genera known from NC only (genus *Lauraesilpha* Grandcolas, 1997) and from NC and
128 Australia (genus *Tryonicus* Shaw, 1925). The current dating estimates and their supposed
129 phylogenetic relationships make them prone to offer at least two additional “old” lineages for
130 NC, and thus to *a priori* test island-hopping scenarios. We first reconstruct the phylogenetic
131 relationships of these families and provide updated dating estimates, relying on an improved
132 taxonomic sampling. If dating estimates of diversification events within NC clades occur
133 before 60 Ma (i.e. before the latest proven emergence), we expect that the most likely
134 biogeographic scenarios would involve island hopping events. Thus, we contrast
135 biogeographic scenarios that allow or disallow island-hopping to decipher the origin of “old”
136 lineages in NC.

137

138 **2. MATERIALS AND METHODS**

139

140 **2.1. Taxon & molecular sampling**

141

142 We sampled a total of 126 ingroup terminal taxa considered at the species level (from 42
143 genera, i.e. 73.4 % of the generic diversity), including 4 representatives of the family
144 Lamproblattidae, 16 Tryonicidae and 106 Blattidae. All four described Blattidae subfamilies
145 (i.e. Archiblattinae Kirby, 1904, Blattinae Latreille, 1810, Macrocerinae Roth, 1993 and
146 Polyzosteriinae Tepper, 1893) were represented by at least one taxon. Subfamilial
147 delineations within Blattidae were recently revised (Djernæs & Murienne, 2022; Deng et al.,
148 2023): Macrocerinae was included within Polyzosteriinae, while four additional subfamilies
149 were erected or revised (Austrostylopyginae Djernæs & Murienne, 2022, Duchailuiinae
150 Roth, 2003, Eurycotiinae McKittrick, 1964 and Hebardinae Deng & Che, 2023). The four
151 latter subfamilies were also sampled here with at least one taxon. Here, we follow the revised
152 classification of Djernæs & Murienne (2022) with six subfamilies, although the taxonomy of
153 these insects needs further investigation. We have chosen taxa according to their geographic
154 distribution, including 41 taxa endemic to NC and one widespread taxon present in the island.
155 We sampled as many genera as possible from the two focal families. Because of the very
156 sparse and controversial fossil record of Blattidae (e.g. Qiu et al., 2020), we chose outgroups
157 that allowed us to include clades with a robust fossil record. We selected 14 outgroup taxa,

158 comprising 13 Blattodea (4 Blaberoidea, 2 Corydiidae, 1 Cryptocercidae, 6 Termitoidea) and
159 one Mantodea.

160 We selected three mitochondrial markers [cytochrome c oxidase subunit I (COI), 12S and
161 16S ribosomal RNAs (12S and 16S)] and two nuclear markers [18S and 28S ribosomal RNAs
162 (18S and 28S)]. We sequenced most of the molecular sequences analyzed here, using the
163 primers and PCR experimental conditions described in Legendre et al. (2008). Some
164 previously published sequences were also retrieved from GenBank. Newly generated
165 sequences—200 sequences for 55 species—were visually cross-checked using Sequencher
166 4.0 (Gene Codes, 1999) to assess sequencing quality, and contaminants were checked for
167 using BLAST. We subsequently excluded poor quality or contaminated sequences from our
168 final dataset. The complete list of taxa, vouchers and sequences used in this study (including
169 GenBank accession numbers) is given in Appendix S1.

170

171 **2.2. Phylogenetic analyses**

172

173 For each marker, we aligned sequences using MUSCLE (Edgar, 2004) as implemented in
174 MEGA v.6 (Tamura et al., 2013) with default parameters. Sequences corresponding to the
175 different 18S amplicons were assembled before alignment, while 28S amplicons were aligned
176 separately. To check for artifacts or contaminations we ran preliminary analyses for each
177 marker using IQ-TREE v.1.6 (Trifinopoulos et al., 2016) and we discarded terminals showing
178 highly incongruent placement for more than one marker. We concatenated alignments for all
179 markers using SequenceMatrix v.1.7 (Vaidya et al., 2011; resulting final alignment of 3890
180 bp) and ran PartitionFinder v.1.1 (Lanfear et al., 2012) with the Akaike information criterion
181 to determine the best-fitting partitioning strategy and substitution models. We recovered three
182 partitions: one including the markers 12S and 16S, for which a GTR + I + G model was the
183 most appropriate; a second one comprising the third codon positions for COI, for which GTR
184 + G (with MrBayes specifications) or a TN93 + G (for BEAST specifications) were the most
185 appropriate; and a third one, made up of the rest of the data for which the most adequate
186 models were SYM + I + G (with MrBayes specifications) or TN93 + I + G (with BEAST
187 specifications). We performed a Bayesian inference (BI) analysis with MrBayes v.3.2.1
188 (Ronquist & Huelsenbeck, 2003) as implemented through the CIPRES Science gateway
189 (www.phylo.org) by launching two separate runs with four Markov chains each running for
190 100 million generations sampled every 10000 generations. We considered convergence was
191 reached when the average standard deviation of split frequencies was below 0.01 (option

192 *stopval*) and checked that Potential Scale Reduction Factor were close to 1.0 for each
193 parameter. We then used a 25% burnin proportion before computing a consensus tree (option
194 *contype=allcompat*). In parallel, we launched an IQ-TREE run with 1000 ultrafast bootstrap
195 replicates, five partitions (one per marker) and with the best-fit model determined during tree
196 reconstruction.

197

198 **2.3. Divergence time estimates**

199

200 Divergence times were estimated using Bayesian relaxed clocks as implemented in
201 BEAST v.2.6.5 (Drummond et al., 2012) with an uncorrelated lognormal clock and a birth-
202 death tree model. Analyses with the partition and models described above failed to converge
203 and resulted in $\ll 200$ ESS values for several parameters. We suspected that the high level of
204 missing data for the partition with the 3rd positions of COI only would explain this failure.
205 Consequently, we chose to use only two partitions, corresponding respectively to
206 mitochondrial and nuclear data, using the most adequate models as revealed by ModelFinder
207 (Kalyaanamoorthy et al., 2017) implemented in the IQ-TREE web platform. We recovered a
208 GTR + I + G model for the mitochondrial data and a TN + I + G model for the nuclear data.
209 We chose fossils with a strong justification as to their phylogenetic placements to calibrate
210 the molecular clock (Parham et al., 2012). We used four outgroup calibrations, corresponding
211 to the following fossil species: “*Gyna*” *obesa* (Piton, 1940), *Cretaholocompsa montesecana*
212 Martínez-Delclòs, 1993, *Valditermes brenanae* Jarzembowski, 1981, *Archeorhinotermes*
213 *rossi* Krishna and Grimaldi, 2003, and one ingroup calibration, the blattid *Cretaperiplaneta*
214 *kaonashi* Qiu et al., 2020 (see Appendix S2 for details on fossil choices, including ages,
215 authors, calibrated clades and calibration procedures). All calibrations were treated with a
216 uniform distribution, with the minimum bound being the age of the fossil and a conservative
217 maximum bound being the age of the Devonian Rhynie chert (412 Myr), except for
218 *Archeorhinotermes rossi* for which the maximum bound was set at 237 Myr because we can
219 reasonably assume that no crown-termites existed before the Carnian stage (Evangelista et al.,
220 2019). Because of its uncertain phylogenetic affinity (see Appendix S2) and its potential
221 consequences on dating estimates (e.g. Seidel et al., 2021), we tested three calibration
222 placements for *Cretaperiplaneta kaonashi*, either for stem-Blattidae, crown-Blattidae or
223 stem-Blattinae, and we also ran an analysis without this calibration. We set a root prior with
224 an exponential distribution (Mean: 30; Offset: 230) to account for the age interval obtained
225 by Evangelista et al. (2019) for Dictyoptera in their phylogenomic analysis of Blattodea. We

226 ran analyses for 100 million generations with trees and parameters sampled every 1000
227 generations. We checked the convergence of parameters using Tracer v.1.7 (Rambaud et al.,
228 2018) by ensuring ESS of all parameters were > 200. We consequently subsampled the tree
229 population by resampling every 10000 generations using LogCombiner (Drummond et al.,
230 2012) and generated a Maximum Clade Credibility consensus tree with median ages with a
231 burn-in value of 15% using TreeAnnotator (Drummond et al., 2012). Data and script files for
232 phylogenetic and dating analyses are provided as Supplementary material (Appendix S3).

233

234 **2.4. Historical biogeography**

235

236 We performed historical biogeography analyses using the R package *BioGeoBEARS*
237 (Matzke, 2014). We pruned outgroups from the consensus dated tree from the BEAST
238 analysis using the R package *ape* (Paradis & Schliep, 2019). Geographical distributions for
239 terminal taxa were mostly recovered from collection labels and from the online Cockroach
240 Species File (Beccaloni, 2014), or from the locality specified by the authors for sequences
241 uploaded to GenBank. Invasive species were considered to originate from the most probable
242 geographic area according to the literature (Cornwell, 1968; Tang et al., 2019 and references
243 herein). These include *Neostylopyga rhombifolia* (Stoll, 1813) of tropical Asian origin, *Blatta*
244 *orientalis* Linnaeus, 1758 of West Asian origin, the smokybrown cockroach *Periplaneta*
245 *fuliginosa* Serville, 1838 probably of Asian origin and three *Periplaneta* species, namely *P.*
246 *americana* (Linnaeus, 1758), *P. australasiae* (Fabricius, 1775) and *P. brunnea* Burmeister,
247 1838 for which an uncertainty remains regarding their Asian or Afrotropical origin; those
248 three species were thus coded as present in those two areas.

249 Because our goal focuses on biogeographic events in the vicinity of NC, we coded
250 biogeographic areas with greater details in the Pacific region. We considered the following
251 areas: NC, New Caledonia (including Loyalty Islands); NZ, New Zealand; AU, Australia;
252 NG, New Guinea; IM, Indomalayan region; PA, Palearctic region; AF, sub-saharan Africa;
253 NT, Neotropical region. We also coded Antarctica (AT) as an area with no terminal taxa. To
254 model island-hopping routes to NC, we coded two additional areas with no terminal taxa: LH,
255 “Lord Howe route”, corresponding to landmasses west of NC acting as a possible stepping-
256 stone for dispersal from Australia and New Guinea, and TK, “Three Kings route”,
257 corresponding to landmasses located south-east of NC, allowing facilitated dispersal from
258 New Zealand and Antarctica.

259 We constructed time-stratified paleogeographic models that account for the major global
260 and regional geological events that could have influenced the distribution of species during
261 the timeframe of our phylogeny. Larger scale paleogeographic information was derived from
262 the PALEOMAP atlas for Gplates (Scotese, 2016). Information concerning the evolution of
263 landmasses in the southwest Pacific region were derived from the most up-to-date literature,
264 including the paleogeographic review of Maurizot & Campbell (2020), and the work of
265 Sutherland et al. (2020) regarding the altitudinal changes in Zealandia during the last 60
266 Myrs. We thus divided NC paleogeography into three major phases (Figure 1):

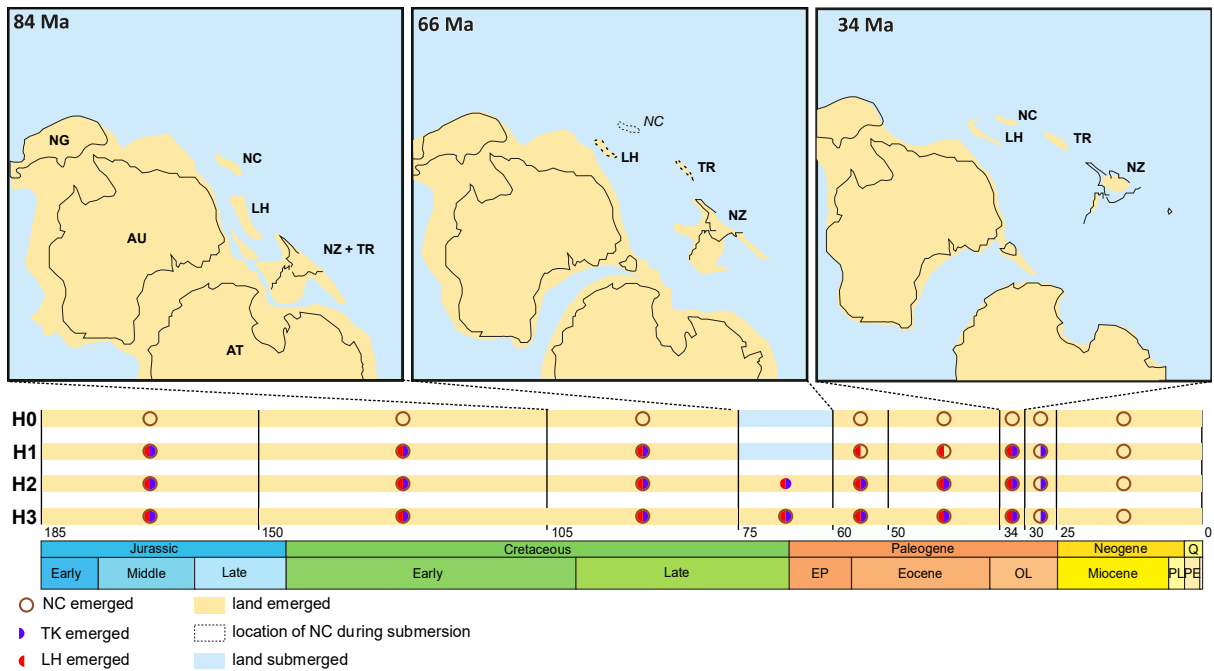
267 A Gondwanan period, ending in the early late Cretaceous, ca 90 Ma, during which proto-
268 NC was located at the eastern periphery of Gondwana and discontinuously exhibited insular
269 characteristics (Collignon, 1977; Cluzel & Meffre, 2002; Cluzel et al., 2012). At the end of
270 this period, proto-New Caledonia was emerged until tectonic processes resulted in
271 lithospheric thinning and marginal rifting (Cluzel et al., 2012).

272 A general drowning (GD) period, from 75 Ma to 60 Ma, during which thermal subsidence
273 provoked the almost total drowning of Zealandia, with the exception of parts of New Zealand
274 (Maurizot & Campbell, 2020). This period is characterized by a uniform cover of pelagic
275 sediments in the region, indicating a geographically extended submersion as no terrigenous
276 sediments are recovered for this period (Maurizot et al., 2020a).

277 A period starting with the partial emersion (60 Ma) and ending with the obduction of NC
278 at 34 Ma. Although marine sedimentation prevailed during this period, small emerged lands
279 appeared repeatedly, but the precise duration of those emersions remain unknown. Previously
280 considered to predate any emerged land in the region, this period is thus possibly
281 characterized by a permanence of land on and in the immediate vicinity of NC, although the
282 main island would only acquire its current conformation after obduction and subsequent
283 weathering (Cluzel et al., 2010; Maurizot et al., 2020b; Sevin et al., 2020).

284 Regarding putative colonization routes to/from NC, there is strong evidence for the
285 presence of lands in Zealandia before the GD period (Maurizot & Campbell, 2020). After the
286 GD period, there is evidence for the existence of lands west of NC from 50 Ma to 30 Ma
287 (Maurizot & Campbell, 2020; Sutherland et al., 2020; i.e. our “Lord Howe route”); and
288 evidence for the existence of lands south of NC from 34 Ma to 25 Ma (Meffre et al., 2006;
289 Sutherland et al., 2020; i.e. our “Three Kings route”). Information regarding time slices and
290 associated events is summarized in Table 1, while additional information at a more global
291 level is presented in Appendix S4.

292



293

294 [double column] **Figure 1. Timeline of emersion in the Southwest Pacific region according to four**
 295 **biogeographic hypotheses (H0-H3) modeled in *BioGeoBEARS*.** The timeline is divided according to the
 296 time slices used in *BioGeoBEARS*, a beige segment indicating that at least one of the three considered
 297 landmasses—New Caledonia (NC; brown circle), "Lord Howe route" (LH; red semicircle) or "Three Kings
 298 route" (TK; purple semicircle)—is emerged, and a blue segment indicating general drowning of these three
 299 landmasses. Antarctica (AT), Australia (AU), New Guinea (NG) and New Zealand (NZ) are considered
 300 always emerged. Interpretative maps, modified from Maurizot & Campbell (2020), are given respectively
 301 for the immediate pre-drowning period (84 Ma), for the general drowning period (66 Ma), and for the
 302 period following the obduction of New Caledonia (34 Ma).

303

304 **Table 1. Time slices used in *BioGeoBEARS* analyses and justifying associated events and references.**
 305 Emersion of New Caledonia (NC) or proto-NC is indicated following Maurizot & Campbell, 2020.

Time slices (Ma)	Major geological events	References	Emersion of proto-NC / NC
185 – 150	Antarctica, East and West Gondwana joined	Scotese, 2016	Yes (proto-NC)
150 – 105	Separation of East and West Gondwana	Scotese, 2016	Yes (proto-NC)
105 – 75	Separation of Africa and South America	Collignon, 1977; Cluzel & Meffre, 2002; Cluzel et al., 2012	Yes (proto-NC)
75 – 60	General drowning (GD) of Zealandia	Maurizot et al., 2020a; Maurizot & Campbell, 2020	No
60 – 50	First dated emersion of Grande Terre after GD	Cluzel et al., 2010; Maurizot et al., 2020b; Sevin et al., 2020	Possible*

50 – 34	Uplift of eastern Zealandia	Sutherland et al., 2020	Possible*
34 – 30	Emersion of southern Zealandia and likely of NC	Maurizot & Campbell, 2020; Sutherland et al., 2020	Likely
30 – 25	Submersion of “Lord Howe route”	Maurizot & Campbell, 2020; Sutherland et al., 2020	Yes
25 – 0	Submersion of “Three Kings route”	Sutherland et al., 2020	Yes

306 *Occurrence of small-sized emerged lands at the place of present NC; geological data for the -60 to -34 Ma
307 period are, however, indecisive.

308

309 To model the paleogeographical events and test the role of potential island-hopping routes,
310 we used the “areas allowed” matrix implemented in *BioGeoBEARS*. This feature allows the
311 user to input a binary matrix specifying which areas are authorized or not in the analysis, with
312 authorized and unauthorized areas indicated by a 1 and a 0, respectively. In the case of a
313 time-stratified analysis, a matrix is provided for each time slice, thus modeling the
314 disappearance of areas during one or several user-specified time intervals. We used this
315 feature to allow or disallow the aforementioned LH and TK routes. We tested three
316 alternative hypotheses regarding the lands surrounding NC in the past (Figure 1): H0 does not
317 allow LH and TK routes to be used at any time (i.e. no island hopping), H1 allows LH and
318 TK routes at times with published geological evidence for emersion, and H2 allows both
319 routes continuously—including during GD—up to their latest documented drowning,
320 respectively at 30 and 25 Ma. In addition, and despite geological evidence, we tested a fourth
321 hypothesis (H3), in which persistence of NC was allowed during GD; H3 also allows LH and
322 TK routes at this time. We tested these hypotheses using the areas allowed and matrices of
323 dispersal multipliers implemented in *BioGeoBEARS*. For each hypothesis, we ran analyses
324 using three biogeographic models implemented in *BioGeoBEARS* (i.e. BAYAREALIKE,
325 DEC and DIVALIKE; Ree & Smith, 2008; Ronquist & Sanmartín, 2011; Landis et al., 2013)
326 along with their respective + J derivatives. We used a maximum range size of two areas,
327 corresponding to the maximum range size coded for terminal taxa, but also ran additional
328 analyses with a maximum range size of four areas (under H0 and H1, the model that best fit
329 with current geological evidence) to ensure that range size did not drastically influence the
330 results. We then performed statistical model comparisons in *BioGeoBEARS* and considered
331 only the model which yielded the lowest AICc score. R scripts are provided as
332 Supplementary material (Appendix S5).

333

334 3. RESULTS

335

336 3.1. Phylogenetic analyses

337

338 The results of the phylogenetic ML and Bayesian inference are summarized in Appendix
339 S6. Our analysis recovers the monophyly of the clade Tryonicidae + Blattidae ($BS_{ML} = 80$;
340 $PP_{BI} = 0.84$; $PP_{BEAST} = 0.86$; see Figure 2 for the latter), sister group to a Lamproblattidae +
341 (Cryptocercidae + Isoptera) clade ($BS_{ML} = 97$; $PP = 1$). We recover three clades in the
342 ingroup with representatives in NC: one within Tryonicidae and two within Blattidae. Within
343 Tryonicidae, we recover the monophyly of NC representatives of the family with high
344 support (i.e. *Lauraesilpha* and *Tryonicus* spp., $BS_{ML} = 100$; $PP = 1$), sister group to the
345 Australian *Tryonicus parvus* (Tepper, 1895). The genus *Tryonicus* is thus robustly found
346 paraphyletic. Within Blattidae, the NC genera *Angustonicus*, *Rothisilpha*, *Pallidionicus*,
347 *Punctulonicus* and *Pellucidonicus* (all described in Grandcolas (1997)) are monophyletic
348 (clade P1, $BS_{ML} = 100$; $PP = 1$), whereas other NC representatives (affiliated to the genus
349 *Maoriblatta* Princis, 1966, clade P2) are paraphyletic—a result weakly supported ($BS_{ML} =$
350 44 ; $PP_{BI} = 0.83$; $PP_{BEAST} = 0.64$)—because of the Australian *Melanozosteria obscura*
351 (Tepper, 1893).

352 More generally, the six Blattidae subfamilies are not all found monophyletic, but five main
353 clades can be identified. The two most nested clades are the clades P and PB (for
354 Polyzosteriinae, and Polyzosteriinae-Blattinae, respectively). In the clade P ($BS_{ML} = 81$; PP_{BI}
355 $= 0.86$; $PP_{BEAST} = 1$), the East Asian genus *Laevifascies* Liao et al., 2019 is sister to a
356 *Macrocerca* Hanitsch, 1930 + Australasian Polyzosteriinae clade. Among these, the New
357 Zealand genus *Celatoblatta* Johns, 1966 is sister group to a large clade (P2) made up of NC
358 genera *Angustonicus*, *Rothisilpha*, *Pallidionicus*, *Punctulonicus* and *Pellucidonicus*, while all
359 representatives of Polyzosteriini known from Australia form a clade with the NC
360 representatives of the genus *Maoriblatta* (P1). The clade PB ($BS_{ML} = 95$; $PP = 1$) is made of
361 Indomalayan/Australasian cockroaches mostly placed in the genus *Dorylaea* Stål, 1877 and
362 species with reduced or absent wings mostly placed within the genus *Neostylopyga* Shelford,
363 1911.

364 Sister-group to the clade (P + PB) is clade B ($PP = 0.86$) containing Archiblattinae Kirby,
365 1904 ($BS_{ML} = 99$; $PP = 0.94$) sister group to a clade comprising sexually dimorphic genera of
366 old world Blattinae, including the African genera *Deropeltis* Burmeister, 1838 and

367 *Pseudoderopeltis* Krauss, 1890 sister group to a mostly Asiatic group of Blattinae, including
368 all species of *Periplaneta* Burmeister, 1838.

369 Sister group to (B, (P + PB)) is Eurycotiinae, a Neotropical clade containing *Eurycotis*
370 Stål, 1874 + *Pelmatosilpha* Dohrn, 1887 ($BS_{ML} = 100$; $PP = 1$). Finally, the clade
371 Duchailiinae ($BS_{ML} = 100$; $PP = 1$), comprising the genera *Duchailiua* Rehn, 1933 and
372 *Hebardina* Bei-Bienko, 1938, is sister group to all other Blattidae. Note that the placement of
373 the Eurycotiinae is not strongly supported ($PP_{BI} = 0.64$) and that Eurycotiinae was found as
374 sister group to B in the ML and BEAST trees ($BS = 75$; $PP_{BEAST} = 0.62$). This is the only
375 major discrepancy between the MrBayes/ML and BEAST analyses and it does not affect the
376 reconstructed biogeographic scenarios for NC lineages, which are either in Tryonicidae or in
377 the clade P.

378

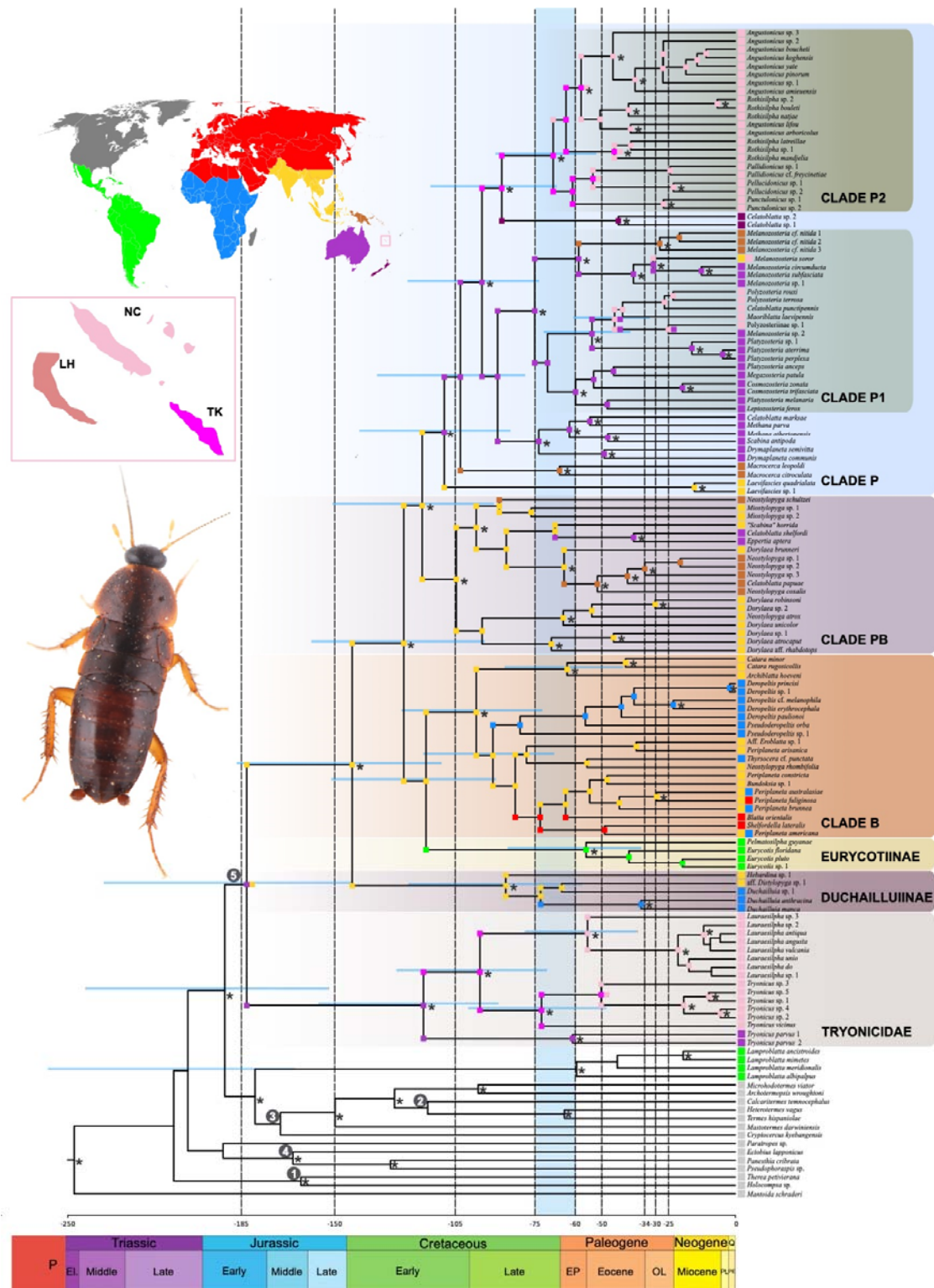
379 **3.2. Divergence time estimates and ancestral range estimation**

380

381 The divergence time estimates are presented in Figure 2, along with the BEAST estimated
382 topology, the 95% credibility intervals for the deepest nodes, and ancestral range estimations
383 assuming the H2 biogeographic hypothesis under DEC + J model, with *Cretaperiplaneta*
384 *kaonashi* calibrating stem-Blattidae (age estimates did not differ significantly when this fossil
385 was removed or used to calibrate another node; see Appendix S7). In brief, H2 favors
386 biogeographic events that include island-hopping events along the “Three Kings (TK) route”,
387 contrary to hypotheses H0, H1 and H3. This is also true for DEC models without jump
388 dispersal events; the number of maximum range size areas (two or four) does not influence
389 the results either (see Appendix S8). Below, we provide dating estimates for the main clades
390 and explain the main events under H2 and DEC + J, before highlighting the main
391 discrepancies with alternative hypotheses (i.e. H0, H1 and H3).

392 We infer an Early Jurassic origin (median age = 183 Ma; 95% HPD = 144–236 Ma) for
393 the Blattidae + Tryonicidae clade, with a geographic range covering both Australia and Asia.
394 Following a vicariance event, we recover an Australian origin for Tryonicidae in the Early
395 Cretaceous (117 Ma; 89–156 Ma). We then recover an island-hopping event (i.e. colonization
396 of the TK area) followed by three independent colonizations of NC after the re-emersion of
397 the island at -60 Ma. For Blattidae, we recover an Asian origin around the Late Jurassic /
398 Early Cretaceous transition (143 Ma; 110–187 Ma). Within Blattidae, two noteworthy
399 independent colonizations of Africa, in the clade Duchailiinae and within the clade B,
400 occurred during the Late Cretaceous. We also recover a colonization of the Neotropics in the

401 Early Cretaceous by the Eurycotiinae (116 Ma; 89–151 Ma). In the clade PB (Asian origin;
402 crown age = 105 Ma; 80–136 Ma), we recover two independent colonizations of New Guinea
403 and Australia from Asia, both around the K/T transition (64 Ma; 47–86 Ma and 68 Ma; 46–
404 92 Ma, respectively). Within the clade P (Asian origin, crown age = 109 Ma; 84–141 Ma), we
405 find an early colonization of Australia during the Cretaceous (103 Ma; 79–134 Ma), rapidly
406 followed by a colonization of New Guinea by a lineage today represented by the genus
407 *Macrocerca*. We also recover an island-hopping event through the TK area around the
408 Early/Late Cretaceous transition (95 Ma; 73–123 Ma) before multiple colonization events of
409 NC around -60 Ma by members of the clade P2. Colonization of NC by members of the clade
410 P1 implies a direct dispersal event from Australia in the Eocene (45 Ma; 32–60 Ma).
411

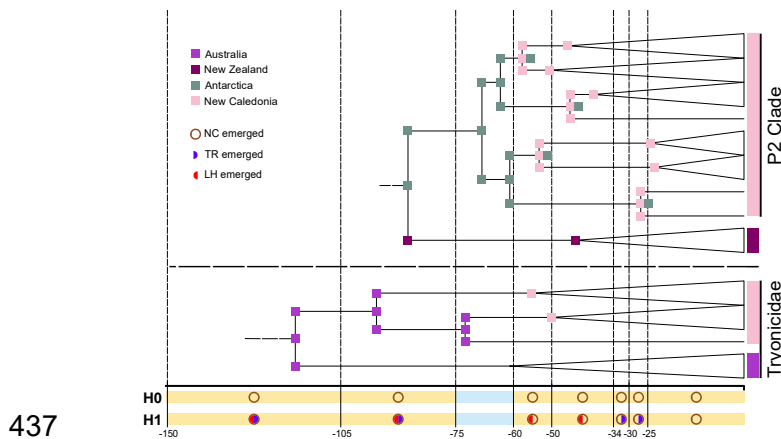


412
413
414
415
416
417
418

[double column] Figure 2. Dated molecular phylogeny and biogeographic history of Blattoidea. Time tree derived from the Maximum Clade Credibility BEAST consensus tree with median ages, 95% credibility interval for major nodes (blue horizontal bars), and most probable ranges recovered by *BioGeoBEARS* under a DEC + J model (H2 hypothesis; maximum of two areas; $d = 0.0019$; $e = 0.0013$; $j = 0.0679$). Geographic ranges for species are indicated left to the taxa names and refer to the colors used in the map in the upper left part of the figure. A schematic representation of the positions of vanished

419 landmasses relative to New Caledonia (NC) is given in the pink insert below the global map (LH for ‘Lord
 420 Howe’ and TK for ‘Three Kings’ routes). Time slices used in the *BioGeoBEARS* analyses are represented
 421 by vertical dashed lines, with the general drowning period between -75 Ma and -60 Ma highlighted in blue.
 422 Posterior probabilities (PP) over 0.95 are noted with an asterisk and the five fossil calibrations are also
 423 depicted: 1 = *Cretaholocompsa montesecana* Martínez-Delclòs, 1993; 2 = *Archeorhinotermes rossi*
 424 Krishna and Grimaldi, 2003; 3 = *Valditermes brenanae* Jarzembowski, 1981; 4 = “*Gyna*” *obesa* (Piton,
 425 1940); 5 = *Cretaperiplaneta kaonashi* Qiu et al., 2020. Picture of *Tryonicus* sp. (T. Schubnel©).
 426

427 The best supported model under H0 (no island hopping) and H1 (island hopping through
 428 identified areas only) is also DEC + J. Under both hypotheses, this model infers, for
 429 Tryonicidae, three colonization events of NC from Australia (*contra* through TK route under
 430 H2). For the clade P2, the model infers multiple colonization events of NC from Antarctica,
 431 which, at this time, was still part of Gondwana. Those are the main discrepancies with the
 432 scenario reconstructed under H2 and they are depicted in Figure 3. As for H3, DIVALIKE +J
 433 and DEC +J have similar supports (AICc of 310.3 and 310.6, respectively). In both cases, a
 434 single colonization event of NC is inferred before the GD for Tryonicidae and for the clade
 435 P2 (Appendix S8).
 436



437
 438 [single column] Figure 3. Alternative scenario for the clade P2 (within Polyzosteriinae) (top) and for
 439 Tryonicidae (bottom) according to H0 and H1 hypotheses (DEC + J; maximum range of two areas).
 440 H0 does not allow island-hopping, whereas H1 allows island-hopping for geologically-documented periods
 441 only. Both hypotheses suggest multiple colonization events from Australia (Tryonicidae; bottom) and
 442 Antarctica (clade P2; top). Terminal branches of the Maximum Clade Credibility BEAST tree are
 443 collapsed for simplicity. Color codes follow Figures 1 and 2 and are repeated on the top left. Time slices
 444 are indicated by vertical dashed lines. The horizontal dash line separates the two focal clades.
 445

446 4. DISCUSSION

447

448 **4.1. Towards ‘trans-disciplinary’ biogeography to test the island-hopping hypothesis**

449 Expanding biogeographic models by adding data from other disciplines is an effective way
450 to strengthen hypothesis-driven research and further move away from narrative biogeography
451 (Crisp et al., 2011). There have been many calls for this ‘trans-disciplinary’ perspective
452 (Donoghue & Moore, 2003; Ronquist & Sanmartín, 2011; Antonelli et al., 2018) since the
453 first statistical approaches of biogeography (Ree et al., 2005), and important conceptual
454 advances and case studies can be underlined (e.g. trait-dependent biogeography, fossil-based
455 analyses, biogeographic models including niche modelling or paleoclimatic reconstructions;
456 Violle et al., 2014; Meseguer et al., 2015; Svenning et al., 2015; Silvestro et al., 2016; Pearse
457 et al., 2018; Sukumaran & Knowles, 2018; Culshaw et al., 2021). Nonetheless, concrete
458 applications remain in a minority and it has never been applied to the case of clades older
459 than the islands they inhabit.

460 The origin of ‘old’ lineages on younger islands is often apparently ‘solved’ by island-
461 hopping hypotheses, wherein clades are supposed to have evolved through presence in or
462 dispersal via now-drowned islands (e.g., Carlquist, 1965; Heads, 2005, 2008; Ladiges &
463 Cantrill, 2007). But, to our knowledge, those hypothetical narratives have never been
464 formally tested (Grandcolas, 2017), except by dating clades in comparison with island ages
465 (e.g. Grandcolas et al., 2008; Nattier et al., 2011, 2017; Giribet & Baker, 2019). Here, we
466 have summarized geological evidence about possible vanished colonization routes so that we
467 can test the island-hopping hypothesis for a clade of New Caledonian insects. This general
468 context and the biogeographic models we have built are not restricted to these insects and can
469 be used for other New Caledonian clades whose ancient origins remain enigmatic (e.g.
470 Sharma & Giribet, 2012; Papadopoulou et al., 2013; Giribet et al., 2021).

471 Our results support a scenario of island-hopping under some, but not all, circumstances,
472 through the “Three Kings route”, at the South-East of NC (H2 scenario; Figure 2). Two
473 clades would have then colonized NC from New Zealand (some endemic Polyzosteriinae)
474 and, perhaps more surprisingly because of our current understanding of paleocurrents, from
475 Australia (Tryonicidae). Note that the biogeographic model under this scenario allowed
476 island-hopping at all times, i.e. even at times for which geological evidence of past vanished
477 islands is lacking or is very equivocal. This lack of evidence is however not a proof of the
478 absence of past emerged territories (see for instance Rouillard et al. (2017) about the Fairway
479 Basin). Conversely, when allowed only at times with geological evidence (H1 scenario)
480 island-hopping hypothesis was not inferred, NC being colonized directly from Australia or

481 through Antarctica (Figure 3). Also, because of the uncertainties associated to dating results,
482 a single colonization event of NC for the clade P2 cannot be entirely ruled out, because the
483 lower bound of the 95% HPD is more recent than the end of the total submersion (Figure 2).
484 Regardless, we have here built a case about testing island-hopping hypotheses, instead of
485 merely invoking them, taking part in an ongoing interdisciplinary paradigm between geology
486 and biogeography (e.g., Landis, 2017; Crews & Esposito, 2020; Feyhl-Buska, 2020; Jöks et
487 al., 2020; Philippon et al., 2020; Ali & Hedges, 2021; Cornée et al., 2021; Michaux & Ung,
488 2021; Montes et al., 2021).

489 Such integrative and statistical inferences in biogeography face limitations and difficulties,
490 notably because of the fragmentary nature of geological information and the difficulty to
491 interpret geological data to reconstruct paleogeography. On the biological side, extinction
492 phenomena or poor taxonomic sampling can obfuscate biogeographic interpretations,
493 especially when the fossil record is lacking (Grandcolas et al., 2014; Barden & Ware, 2017;
494 Mayr, 2017; Wisniewski et al., 2022). Uncertainties in phylogenetic relationships and in
495 dating estimates, from calibration procedures to confidence intervals that may overlap with
496 several time slices, also contribute to becloud biogeographic interpretations. Finally,
497 biogeographic models also have limitations as they only consider a small number of
498 biogeographic events, treat dispersal as a time-independent process, while also struggling to
499 incorporate paleogeographic or diversification-related information that might affect range
500 evolution; they are also ill-suited to test competing hypotheses that differ in their premises
501 (Hackel & Sanmartín, 2021). In spite of these caveats, integrative biogeography must be
502 encouraged and strengthened to help limit overly speculative conclusions (Donoghue &
503 Moore, 2003; Crisp et al., 2011; Ronquist & Sanmartín, 2011; Antonelli et al., 2018; Ribas et
504 al., 2022). In the case of the NC biota, geological and biological data could be complemented,
505 for instance, with paleoclimatic data to further improve the test and robustness of
506 biogeographic hypotheses.

507

508 **4.2. Paleoendemics in New Caledonia**

509

510 There is a consensus on the mixed origin of the NC biota, especially its endemics. As
511 previously synthesized (Gillespie & Roderick, 2002; Murienne et al., 2005; Grandcolas et al.,
512 2008; Sharma & Wheeler, 2013; Giribet & Baker, 2019), these organisms can be classified
513 into paleoendemics and neoendemics, depending on their ages of divergence and
514 diversification. While the majority of the New Caledonian biota would fall in the

515 neoendemics group—i.e. groups that diverged from their sister group relatively recently (e.g.
516 Nattier et al., 2017)—paleoendemics (but not relicts and revenants; Sharma & Wheeler,
517 2013) inform us more than neoendemics on the general debate about the origin of old taxa in
518 relatively recent islands.

519 We here identified up to three paleoendemic clades in Tryonicidae and Blattidae
520 cockroaches that can be added to the relatively short list of New Caledonian paleoendemics,
521 alongside Troglosironidae or *Zalmoxis* (Giribet & Baker, 2019; Giribet et al., 2021).
522 Interestingly, these paleoendemics have presumably dispersed from different regions, from
523 Australia and New Zealand to Antarctica or now vanished islands (e.g. here what we called
524 the “Three Kings route”), depending on the areas allowed along time in biogeographic
525 models. This study thus highlights the diversity of the origins of taxa, even within the same
526 category of endemics.

527 Tryonicidae and the neocaledonian Polyzosteriinae (i.e. genera *Angustonicus*,
528 *Pallidionicus*, *Pellucidonicus*, *Punctulonicus* and *Rothisilpha*) are particularly remarkable
529 because their origins is estimated to date back to the Late Cretaceous, before or during the
530 general submersion. Our results suggest that their history could be misleadingly assumed to
531 be consistent with a possible vicariant event, had our analyses not incorporated geological
532 information such as the major and undisputed general drowning period (-75 Ma to -60 Ma).

533 Tryonicidae—found only in Australia and New Caledonia—can also be seen as a relict,
534 like the harvestman *Troglosiro* (Sharma & Giribet, 2009), because of their much more
535 diversified and widely distributed sister group (i.e. Blattidae) and because they are at the ‘tip’
536 of a relatively long branch, a topology congruent with extinction events (Grandcolas et al.,
537 2014). If they are true relicts, then, by definition, their geographical origin would be hard to
538 decipher and they would not inform us much about the history of New Caledonia. On the
539 other hand, they would have value for conservation purposes or to document extinction—
540 which remains challenging even in modern diversification analyses. As for the clade P2
541 (*Maoriblatta* and affiliated), they could also correspond to neoendemics given the uncertainty
542 around their age of origin (ca. 35 Ma as minimal value of the 95% HPD). However, to settle
543 on their taxonomic and biogeographic status, *Maoriblatta* from New Zealand or Australia
544 should be added in future analyses. In any case, and maybe even more for relicts in the
545 southern Hemisphere (Upchurch, 2008), fossil evidence could bring decisive insights and
546 limit the risk of skewed interpretations (Silvestro et al., 2016; Barden & Ware, 2017; Mayr,
547 2017; Garrouste et al., 2021).

548

549 **4.3. Difficulties of biogeography in the deep time: extinctions, dispersal ability and areas**
550 **with no extant representatives**

551

552 Whatever the biogeographic model used to reconstruct the biogeography of these insects,
553 we inferred multiple colonizations of NC from different origins and following different
554 biogeographic events. Among these events, jump dispersals have, however, never been
555 inferred for those clades (Appendix S8), whose dispersal ability is difficult to assess.
556 Although much of these cockroaches are wingless, several are associated with dead wood—
557 notably the wood-boring Tryonicidae—or other dead vegetal matter that could facilitate
558 dispersal across marine barriers. In addition, over such long periods of time, it is difficult to
559 estimate how rare and (un)likely successful dispersals events are, depending also on
560 environmental factors such as sea or air currents. For example, long distance dispersals have
561 been shown in taxa otherwise known to be poor dispersers (e.g. *Leptomymex* ants in Lucky,
562 2011 or *Nothofagus* trees and shrubs in Cook & Crisp, 2005; but see also Derkarabetian et al.,
563 2021). Extinctions can also blur biogeographic interpretations, with the effect of generating
564 discontinuous biogeographic patterns that are difficult to interpret, a point already raised for
565 New Caledonia (Grandcolas et al., 2014). All this underlines the complex nature of
566 colonization processes and the difficulty to reconstruct them, especially in very deep time.

567 In this regard, incorporating biogeographic areas with no extant representatives—this
568 includes, but shall not be restricted to, now vanished islands—into biogeographic analyses is
569 pivotal. For instance, Antarctica has repeatedly been inferred as a possible colonization route
570 between Australia and South America (e.g. Cruaud et al., 2011, Vicente et al., 2017). Here, a
571 passage through Antarctica is inferred in one of the scenarios we tested (for a NC clade
572 within Polyzosteriinae; Figure 3) but not for the colonization of the Neotropics. Instead, the
573 neotropical Eurycotiinae, whose position is consistent with previous phylogenetic works
574 (e.g., Legendre et al., 2015, but *contra* Bourguignon et al., 2018), would have dispersed from
575 Asia, like the two African clades, during the Cretaceous. We refrain, however, from
576 discussing further biogeographic implications at the deepest nodes of our phylogeny because
577 of a few weakly supported nodes, which might impact biogeographic reconstructions (e.g.,
578 Smith, 2009; Magalhaes et al., 2021). We thus consider that additional data and support are
579 needed to discuss the early biogeography of those cockroaches. Regardless, counter-intuitive
580 patterns of range evolution should neither be taken for granted nor be dismissed lightly.
581 Inferred biogeographic patterns can fit with multiple alternative histories, and the geographic
582 changes influencing biotic evolution are often very complex. In this regard, the simpler

583 scenario (often the one implying long-distance dispersals) is not necessarily the most
584 consistent with the geological record, and a better grasp of geologic history can radically alter
585 biogeographic interpretations (e.g. the influence of translocated Gondwana-derived
586 landmasses in shaping the Asian biota; Loria & Prendini, 2020; Bolotov et al., 2022).

587

588 **ACKNOWLEDGMENTS**

589 We thank H. Jourdan for numerous discussions about the fascinating NC biota and F.
590 Condamine for fruitful talks, especially regarding *BioGeoBEARS*. The newly generated
591 molecular data result from various fieldwork expeditions and studies in museum collections,
592 which involved many people without whom this work would not have been possible. Part of
593 the specimens was collected during: “Our Planet Reviewed” Guyane-2015 expedition in the
594 Mitaraka range (APA 973-1), in the core area of the French Guiana Amazonian Park,
595 organized by the MNHN and Pro-Natura international. The expedition was funded by the
596 European Regional Development Fund, the Conseil régional de Guyane, the Conseil général
597 de Guyane, the Direction de l'Environnement, de l'Aménagement et du Logement and by the
598 Ministère de l'Éducation nationale, de l'Enseignement supérieur et de la Recherche, in
599 collaboration with the Parc amazonien de Guyane and the Société entomologique Antilles-
600 Guyane ; ‘Our Planet Reviewed’ expedition in New Caledonia, a MNHN program in
601 partnership with Conservatoire d'espaces naturels de Nouvelle-Calédonie. The 2017
602 Katalupaik expedition was funded mainly by the Gouvernement de la Nouvelle-Calédonie,
603 Province Nord, and Office des Postes et Télécommunications, with in-kind support from
604 AirCalin and Avis Nouvelle-Calédonie. The expedition operated under permit 60912-2001-
605 2017/JJC issued by Direction du Développement Économique et de l'Environnement of
606 Province Nord (APA-NCPS-2016-025). Part of this study was conducted in the framework of
607 “Our Planet Reviewed Papua-New-Guinea 2012-2013” set up by Pro-Natura International,
608 MNHN, the Institut de Recherche pour le Développement (IRD) in partnership with the
609 Royal Belgian Institute of Natural Sciences (RBINS), the New Guinea Binatang Research
610 Center, the University of Papua New Guinea, and the Divine Word University of Madang and
611 with core funding of Prince Albert II of Monaco Foundation, the Stavros Niarchos
612 Foundation, the Total Foundation, the Fondation d'entreprise EDF, the Fonds Pacifique,
613 Spiecapag, Entrepouse Contracting, the New-Caledonia Government, the Reef Foundation and
614 the Belgian National Lottery. The IBISCA expert network, the patron for this project, Prof.
615 R.L. Kitching AM, and all other participants in this collective effort are thanked for their
616 contribution. We are deeply indebted to O. Pascal for having organized the different “Our

617 Planet Reviewed” expeditions and for having shown us his trust repeatedly by inviting us to
618 participate. A few samples were also collected during the Project Lengguru 2014, conducted
619 by the French IRD, the Indonesian Institute of Sciences, the University of Papua, the
620 University of Cendrawasih, the University of Musamus and the Sorong Fisheries Academy
621 with corporate sponsorship from COLAS Group, Veolia Water and the Total Foundation. We
622 are also grateful to J. Constant and C. Paleco for their help during the study of the collections
623 of the RBINS, funded by the SYNTHESYS European program (BE-TAF-6640); to L.
624 Anisyutkin for his help during the study of the collections of the Zoological Institute of
625 Russian Academy of Sciences, Saint-Petersburg, funded by the program ‘Action
626 Transversale’ of MNHN; to the program “ANR Biodiversité” of the French National Agency
627 for Research (project BIONEOCAL 2008-2012), to PPF “Etat et structure phylogénétique de
628 le biodiversité actuelle et fossile” (MNHN), to Action Transversale ‘Biodiversité actuelle et
629 fossile’ (MNHN), to ATM ‘Emergences’ (MNHN) and to ‘Rapid Assessment Program’
630 (Conservation International) for supporting fieldwork in French Guiana, Indonesia, New
631 Caledonia and Philippines; to the National Parks Board of Singapore for delivering permits
632 N° NP/RP923 for collecting specimens. We thank J. Murienne for sharing some molecular
633 data before they were published. We also acknowledge help for molecular data acquisition
634 and are grateful to the ‘Service de Systématique Moléculaire’, UAR 2700 2AD, MNHN,
635 CNRS, and to the ‘BoEM’ where molecular experimentations were carried out; more
636 specifically we thank D. Gey, C. Bonillo, G. Colombini, Q. Lefèvre, L. Pindrais and F.
637 Moreau. This work was presented at the virtual Early Career Biogeographers Conference
638 held by the International Biogeography Society in October 2021.

639

640 **CONFLICT OF INTEREST STATEMENT**

641 The authors declare no conflicts of interest.

642

643 **DATA AVAILABILITY STATEMENT**

644 The data that support the findings of this study are available in the supplementary material of
645 this article. Sequence accession numbers for GenBank are in Appendix S1, Alignments and
646 molecular dating inputs in Appendix S3 and BioGeoBEARS scripts and datasets in
647 Appendix S5.

648

649 **REFERENCES**

650

651 Aitchison, J. C., Clarke, G. L., Meffre, S., & Cluzel, D. (1995). Eocene arc-continent
652 collision in New Caledonia and implications for regional southwest Pacific tectonic
653 evolution. *Geology*, 23(2), 161–164. [https://doi.org/10.1130/0091-](https://doi.org/10.1130/0091-7613(1995)023<0161:EACCIN>2.3.CO;2)
654 [7613\(1995\)023<0161:EACCIN>2.3.CO;2](https://doi.org/10.1130/0091-7613(1995)023<0161:EACCIN>2.3.CO;2)

655 Ali, J. R., & Hedges, S. B. (2021). Colonizing the Caribbean: New geological data and an
656 updated land vertebrate colonization record challenge the GAARlandia land bridge
657 hypothesis. *Journal of Biogeography*, 48(11), 2699–2707.
658 <https://doi.org/10.1111/jbi.14234>

659 Antonelli, A., Ariza, M., Albert, J., Andermann, T., Azevedo, J., Bacon, C., Faurby, S.,
660 Guedes, T., Hoorn, C., Lohmann, L. G., Matos-Maraví, P., Ritter, C. D., Sanmartín, I.,
661 Silvestro, D., Tejedor, M., ter Steege, H., Tuomisto, H., Werneck, F. P., Zizka, A., &
662 Edwards, S. V. (2018). Conceptual and empirical advances in Neotropical biodiversity
663 research. *PeerJ*, 6, e5644. <https://doi.org/10.7717/peerj.5644>

664 Baker, C.M., Sheridan, K., Derkarabetian, S., Pérez-González, A., Vélez, S., Giribet, G.,
665 (2020). Molecular phylogeny and biogeography of the temperate Gondwanan family
666 Triaenonychidae (Opiliones : Laniatores) reveals pre-Gondwanan regionalisation,
667 common vicariance, and rare dispersal. *Invertebrate Systematics* 34, 637–660.
668 <https://doi.org/10.1071/IS19069>.

669 Barden, P., & Ware, J. L. (2017). Relevant Relicts: The impact of fossil distributions on
670 biogeographic reconstruction. *Insect Systematics and Diversity*, 1(1), 73–80.
671 <https://doi.org/10.1093/isd/ixx005>

672 Bolotov, I.N., Pasupuleti, R., Subba Rao, N.V., Unnikrishnan, S.K., Chan, N., Lunn, Z., Win,
673 T., Gofarov, M.Y., Kondakov, A.V., Konopleva, E.S., Lyubas, A.A., Tomilova, A.A.,
674 Vikhrev, I.V., Pfenninger, M., Düwel, S.S., Feldmeyer B., Neseemann, H.F., & Nagel,
675 K-O. (2022). Oriental freshwater mussels arose in East Gondwana and arrived to Asia
676 on the Indian Plate and Burma Terrane. *Scientific Reports*, 12, 1518.
677 <https://doi.org/10.1038/s41598-022-05257-0>

678 Bourguignon, T., Tang, Q., Ho, S. Y. W., Juna, F., Wang, Z., Arab, D. A., Cameron, S. L.,
679 Walker, J., Rentz, D., Evans, T. A., & Lo, N. (2018). Transoceanic dispersal and plate
680 tectonics shaped global cockroach distributions: Evidence from mitochondrial
681 phylogenomics. *Molecular Biology and Evolution*, 35(4), 970–983.
682 <https://doi.org/10.1093/molbev/msy013>

683 Buckley, T. R., Attanayake, D., Nylander, J. A. A., & Bradler, S. (2010). The phylogenetic
684 placement and biogeographical origins of the New Zealand stick insects (Phasmatodea).

685 *Systematic Entomology*, 35(2), 207–225. <https://doi.org/10.1111/j.1365->
686 3113.2009.00505.x

687 Carlquist, S. J. (1965). *Island life: a natural history of islands of the world*. The Natural
688 History Press, New York.

689 Cluzel, D., Adams, C. J., Meffre, S., Campbell, H., & Maurizot, P. (2010). Discovery of
690 Early Cretaceous rocks in New Caledonia: New geochemical and U-Pb zircon age
691 constraints on the transition from subduction to marginal breakup in the Southwest
692 Pacific. *The Journal of Geology*, 118(4), 381–397. <https://doi.org/10.1086/652779>

693 Cluzel, D., Aitchison, J. C., & Picard, C. (2001). Tectonic accretion and underplating of
694 mafic terranes in the Late Eocene intraoceanic fore-arc of New Caledonia (Southwest
695 Pacific): Geodynamic implications. *Tectonophysics*, 340(1–2), 23–59.
696 [https://doi.org/10.1016/S0040-1951\(01\)00148-2](https://doi.org/10.1016/S0040-1951(01)00148-2)

697 Cluzel, D., Maurizot, P., Collot, J., & Sevin, B. (2012). An outline of the geology of New
698 Caledonia; from Permian-Mesozoic Southeast Gondwanaland active margin to
699 Cenozoic obduction and supergene evolution. *Episodes*, 35(1), 72–86.

700 Cluzel, D., & Meffre, S. (2002). L'unité de la Boghen (Nouvelle-Calédonie, Pacifique sud-
701 ouest): Un complexe d'accrétion jurassique. Données radiochronologiques
702 préliminaires U–Pb sur les zircons détritiques. *Comptes Rendus Géoscience*, 334(11),
703 867–874. [https://doi.org/10.1016/S1631-0713\(02\)01823-0](https://doi.org/10.1016/S1631-0713(02)01823-0)

704 Collignon, M. (1977). Ammonites néocrétacées de la Nouvelle Calédonie. [Neo-Cretaceous
705 ammonites from New Caledonia.]. *Bulletin du Bureau de Recherches Géologiques et*
706 *Minières*, 2(4), 7–35.

707 Cook, L. G., & Crisp, M. D. (2005). Not so ancient: The extant crown group of *Nothofagus*
708 represents a post-Gondwanan radiation. *Proceedings of the Royal Society B: Biological*
709 *Sciences*, 272(1580), 2535–2544. <https://doi.org/10.1098/rspb.2005.3219>

710 Cornée, J.-J., Münch, P., Philippon, M., BouDagher-Fadel, M., Quillévéré, F., Melinte-
711 Dobrinescu, M., Lebrun, J.-F., Gay, A., Meyer, S., Montheil, L., Lallemand, S.,
712 Marcaillou, B., Laurencin, M., Legendre, L., Garroq, C., Boucard, M., Beslier, M.-O.,
713 Laigle, M., Schenini, L., ... Marivaux, L. (2021). Lost islands in the northern Lesser
714 Antilles: Possible milestones in the Cenozoic dispersal of terrestrial organisms between
715 South-America and the Greater Antilles. *Earth-Science Reviews*, 217, 103617.
716 <https://doi.org/10.1016/j.earscirev.2021.103617>

717 Cornwell, P. B. (1968). *The cockroach. Volume 1. A laboratory insect and an industrial pest*.
718 Hutchinson, London.

- 719 Crews, S. C., & Esposito, L. A. (2020). Towards a synthesis of the Caribbean biogeography
720 of terrestrial arthropods. *BMC Evolutionary Biology*, 20(1), 12.
721 <https://doi.org/10.1186/s12862-019-1576-z>
- 722 Crisp, M. D., Trewick, S. A., & Cook, L. G. (2011). Hypothesis testing in biogeography.
723 *Trends in Ecology & Evolution*, 26(2), 66–72.
724 <https://doi.org/10.1016/j.tree.2010.11.005>
- 725 Cruaud, A., Jabbour-Zahab, R., Genson, G., Couloux, A., Yan-Qiong, P., Da Rong, Y.,
726 Ubaidillah, R., Pereira, R. A. S., Kjellberg, F., van Noort, S., Kerdelhué, C., & Rasplus,
727 J.-Y. (2011). Out of Australia and back again: The world-wide historical biogeography
728 of non-pollinating fig wasps (Hymenoptera: Sycophaginae). *Journal of Biogeography*,
729 38(2), 209–225. <https://doi.org/10.1111/j.1365-2699.2010.02429.x>
- 730 Cruaud, A., Jabbour-Zahab, R., Genson, G., Ungricht, S., & Rasplus, J.-Y. (2012). Testing
731 the Emergence of New Caledonia: Fig Wasp Mutualism as a Case Study and a Review
732 of Evidence. *PLoS ONE*, 7(2), e30941. <https://doi.org/10.1371/journal.pone.0030941>
- 733 Culshaw, V., Villaverde, T., Mairal, M., Olsson, S., & Sanmartín, I. (2021). Rare and
734 widespread: Integrating Bayesian MCMC approaches, Sanger sequencing and Hyb-Seq
735 phylogenomics to reconstruct the origin of the enigmatic Rand Flora genus
736 *Camptoloma*. *American Journal of Botany*, 108(9), 1673–1691.
737 <https://doi.org/10.1002/ajb2.1727>
- 738 Darlington, P.J. (1957). *Zoogeography: the geographical distribution of animals*. Wiley, New
739 York.
- 740 Derkarabetian, S., Baker, C. M., & Giribet, G. (2021). Complex patterns of Gondwanan
741 biogeography revealed in a dispersal-limited arachnid. *Journal of Biogeography*, 48(6),
742 1336–1352. <https://doi.org/10.1111/jbi.14080>
- 743 Djernæs, M., & Murienne, J. (2022). Phylogeny of Blattoidea (Dictyoptera: Blattodea) with a
744 revised classification of Blattidae. *Arthropod Systematics & Phylogeny*, 80, 209–228.
745 <https://doi.org/10.3897/asp.80.e75819>
- 746 Donoghue, M. J., & Moore, B. R. (2003). Toward an Integrative Historical Biogeography.
747 *Integrative and Comparative Biology*, 43(2), 261–270.
748 <https://doi.org/10.1093/icb/43.2.261>
- 749 Drummond, A. J., Suchard, M. A., Xie, D., & Rambaut, A. (2012). Bayesian phylogenetics
750 with BEAUti and the BEAST 1.7. *Molecular Biology and Evolution*, 29(8), 1969–1973.
751 <https://doi.org/10.1093/molbev/mss075>

752 Edgar, R. C. (2004). MUSCLE: Multiple sequence alignment with high accuracy and high
753 throughput. *Nucleic Acids Research*, 32(5), 1792–1797.
754 <https://doi.org/10.1093/nar/gkh340>

755 Evangelista, D. A., Wipfler, B., Béthoux, O., Donath, A., Fujita, M., Kohli, M. K., Legendre,
756 F., Liu, S., Machida, R., Misof, B., Peters, R. S., Podsiadlowski, L., Rust, J., Schuette,
757 K., Tollenaar, W., Ware, J. L., Wappler, T., Zhou, X., Meusemann, K., & Simon, S.
758 (2019). An integrative phylogenomic approach illuminates the evolutionary history of
759 cockroaches and termites (Blattodea). *Proceedings of the Royal Society B: Biological*
760 *Sciences*, 286(1895), 20182076. <https://doi.org/10.1098/rspb.2018.2076>

761 Favre, A., Päckert, M., Pauls, S. U., Jähnig, S. C., Uhl, D., Michalak, I., & Muellner-Riehl,
762 A. N. (2015). The role of the uplift of the Qinghai-Tibetan Plateau for the evolution of
763 Tibetan biotas. *Biological Reviews*, 90(1), 236–253. <https://doi.org/10.1111/brv.12107>

764 Feyhl-Buska, J. (2020). Lessons learned at the biology–geology interface. *Nature Reviews*
765 *Earth & Environment*, 1(3), 135–136. <https://doi.org/10.1038/s43017-020-0034-1>

766 Garrouste R., Munzinger J., Leslie A., Fisher J., Folcher N., Locatelli E., Foy W., Chaillon
767 T., Cantrill D.J., Maurizot P., Cluzel D., Lowry P.P., Crane P., Bahain J.-J., Voinchet
768 P., Jourdan H., Grandcolas P. & Nel A. (2021). New fossil discoveries illustrate the
769 diversity of past terrestrial ecosystems in New Caledonia. *Scientific Reports*, 11, 18388.

770 Gene Codes. (1999). Sequencher® version 4.8 sequence analysis software. Ann Arbor:
771 Michigan Gene Codes Corporation.

772 Gibbs, G. W., & Lees, D. C. (2014). New Caledonia as an evolutionary cradle: A re-appraisal
773 of the jaw-moth genus *Sabatinca* (Lepidoptera: Micropterigidae) and its significance
774 for assessing the antiquity of the island’s fauna. *Zoologia Neocaledonica*, 8, 239–266.

775 Gillespie, R. G., & Roderick, G. K. (2002). Arthropods on Islands: Colonization, speciation,
776 and conservation. *Annual Review of Entomology*, 47(1), 595–632.
777 <https://doi.org/10.1146/annurev.ento.47.091201.145244>

778 Giribet, G., & Baker, C. M. (2019). Further discussion on the Eocene drowning of New
779 Caledonia: Discordances from the point of view of zoology. *Journal of Biogeography*,
780 46(9), 1912–1918. <https://doi.org/10.1111/jbi.13635>

781 Giribet, G., Baker, C. M., & Sharma, P. P. (2021). A revised phylogeny of the New
782 Caledonian endemic genus *Troglosiro* (Opiliones: Cyphophthalmi: Troglosironidae)
783 with the description of four new species. *Invertebrate Systematics*.
784 <https://doi.org/10.1071/IS20042>

- 785 Giribet, G., Sharma, P. P., Benavides, L. R., Boyer, S. L., Clouse, R. M., De Bivort, B. L.,
786 Dimitrov, D., Kawauchi, G. Y., Murienne, J., & Schwendinger, P. J. (2012).
787 Evolutionary and biogeographical history of an ancient and global group of arachnids
788 (Arachnida: Opiliones: Cyphophthalmi) with a new taxonomic arrangement. *Biological*
789 *Journal of the Linnean Society*, 105(1), 92–130. [https://doi.org/10.1111/j.1095-](https://doi.org/10.1111/j.1095-8312.2011.01774.x)
790 [8312.2011.01774.x](https://doi.org/10.1111/j.1095-8312.2011.01774.x)
- 791 Grandcolas, P. (1996). The phylogeny of cockroach families: A cladistic appraisal of
792 morpho-anatomical data. *Canadian Journal of Zoology*, 74(3), 508–527.
793 <https://doi.org/10.1139/z96-059>
- 794 Grandcolas, P. (1997). Systématique phylogénétique de la sous-famille des Tryonicinae
795 (Dictyoptera, Blattaria, Blattidae). *Mémoires du Muséum national d'Histoire naturelle*
796 (1993), 171, 91–124.
- 797 Grandcolas, P. (2017). Ten false ideas about New Caledonia biogeography. *Cladistics*, 33(5),
798 481–487. <https://doi.org/10.1111/cla.12176>
- 799 Grandcolas, P., Murienne, J., Robillard, T., Desutter-Grandcolas, L., Jourdan, H., Guilbert,
800 E., & Deharveng, L. (2008). New Caledonia: A very old Darwinian island?
801 *Philosophical Transactions of the Royal Society B: Biological Sciences*, 363(1508),
802 3309–3317. <https://doi.org/10.1098/rstb.2008.0122>
- 803 Grandcolas, P., Nattier, R., & Trewick, S. (2014). Relict species: A relict concept? *Trends in*
804 *Ecology & Evolution*, 29(12), 655–663. <https://doi.org/10.1016/j.tree.2014.10.002>
- 805 Gressitt, J. (1956). Distribution Patterns of Pacific Island Faunae. *Systematic Zoology*, 5, 11–
806 47. <https://www.jstor.org/stable/2411649>
- 807 Hackel, J., & Sanmartín, I. (2021). Modelling the tempo and mode of lineage dispersal.
808 *Trends in Ecology & Evolution*, 36(12), 1102–1112.
809 <https://doi.org/10.1016/j.tree.2021.07.007>
- 810 Heads, M. (2005). Dating nodes on molecular phylogenies: A critique of molecular
811 biogeography. *Cladistics*, 21(1), 62–78. [https://doi.org/10.1111/j.1096-](https://doi.org/10.1111/j.1096-0031.2005.00052.x)
812 [0031.2005.00052.x](https://doi.org/10.1111/j.1096-0031.2005.00052.x)
- 813 Heads, M. (2008). Panbiogeography of New Caledonia, south-west Pacific: Basal
814 angiosperms on basement terranes, ultramafic endemics inherited from volcanic island
815 arcs and old taxa endemic to young islands. *Journal of Biogeography*, 35(12), 2153–
816 2175. <https://doi.org/10.1111/j.1365-2699.2008.01977.x>

817 Jöks, M., Kreft, H., Weigelt, P., & Pärtel, M. (2021). Legacy of archipelago history in
818 modern island biodiversity – An agent-based simulation model. *Global Ecology and*
819 *Biogeography*, 30(1), 247–261. <https://doi.org/10.1111/geb.13220>

820 Kalyaanamoorthy, S., Minh, B. Q., Wong, T. K. F., von Haeseler, A., & Jermin, L. S.
821 (2017). ModelFinder: Fast model selection for accurate phylogenetic estimates. *Nature*
822 *Methods*, 14(6), 587–589. <https://doi.org/10.1038/nmeth.4285>

823 Ladiges, P. Y., & Cantrill, D. (2007). New Caledonia–Australian connections: Biogeographic
824 patterns and geology. *Australian Systematic Botany*, 20(5), 383.
825 <https://doi.org/10.1071/SB07018>

826 Landis, M. J. (2016). Biogeographic dating of speciation times using paleogeographically
827 informed processes. *Systematic Biology*, 66(2), 128–144.
828 <https://doi.org/10.1093/sysbio/syw040>

829 Landis, M. J., Matzke, N. J., Moore, B. R., & Huelsenbeck, J. P. (2013). Bayesian analysis of
830 biogeography when the number of areas is large. *Systematic Biology*, 62(6), 789–804.
831 <https://doi.org/10.1093/sysbio/syt040>

832 Lanfear, R., Calcott, B., Ho, S. Y. W., & Guindon, S. (2012). PartitionFinder: Combined
833 selection of partitioning schemes and substitution models for phylogenetic analyses.
834 *Molecular Biology and Evolution*, 29(6), 1695–1701.
835 <https://doi.org/10.1093/molbev/mss020>

836 Legendre, F., Deleporte, P., Depraetere, M., Gasc, A., Pellens, R., & Grandcolas, P. (2015).
837 Dyadic behavioural interactions in cockroaches (Blaberidae): Ecomorphological and
838 evolutionary implications. *Behaviour*, 152(9), 1229–1256.
839 <https://doi.org/10.1163/1568539X-00003276>

840 Legendre, F., Whiting, M. F., Bordereau, C., Canello, E. M., Evans, T. A., & Grandcolas, P.
841 (2008). The phylogeny of termites (Dictyoptera: Isoptera) based on mitochondrial and
842 nuclear markers: Implications for the evolution of the worker and pseudergate castes,
843 and foraging behaviors. *Molecular Phylogenetics and Evolution*, 48(2), 615–627.
844 <https://doi.org/10.1016/j.ympev.2008.04.017>

845 Liao, S., Wang, Z., & Che, Y. (2019). A new genus and a new species in the subfamily
846 Polyzosteriinae (Blattodea, Blattidae) from China. *ZooKeys*, 852, 85–100.
847 <https://doi.org/10.3897/zookeys.852.33325>

848 Loria, S.F., Prendini, L. (2020) Out of India, thrice: diversification of Asian forest scorpions
849 reveals three colonizations of Southeast Asia. *Scientific Reports* 10, 22301.
850 <https://doi.org/10.1038/s41598-020-78183-8>

851 Lucky, A. (2011). Molecular phylogeny and biogeography of the spider ants, genus
852 *Leptomymex* Mayr (Hymenoptera: Formicidae). *Molecular Phylogenetics and*
853 *Evolution*, 59(2), 281–292. <https://doi.org/10.1016/j.ympev.2011.03.004>

854 Magalhaes, I. L. F., Santos, A. J., & Ramírez, M. J. (2021). Incorporating topological and age
855 uncertainty into event-based biogeography of sand spiders supports paleo-islands in
856 Galapagos and ancient connections among neotropical dry forests. *Diversity*, 13(9),
857 418. <https://doi.org/10.3390/d13090418>

858 Matzke, N. J. (2014). Model selection in historical biogeography reveals that founder-event
859 speciation is a crucial process in island clades. *Systematic Biology*, 63(6), 951–970.
860 <https://doi.org/10.1093/sysbio/syu056>

861 Maurizot, P., & Campbell, H. J. (2020). Palaeobiogeography of New Caledonia. *Geological*
862 *Society, London, Memoirs*, 51(1), 189–213. <https://doi.org/10.1144/M51-2019-31>

863 Maurizot, P., Cluzel, D., Patriat, M., Collot, J., Iseppi, M., Lesimple, S., Secchiari, A., Bosch,
864 D., Montanini, A., & Macera, P. (2020a). The Eocene subduction–obduction complex
865 of New Caledonia. *Geological Society, London, Memoirs*, 51(1), 93–130.
866 <https://doi.org/10.1144/M51-2018-70>

867 Maurizot, P., Collot, J., Cluzel, D., & Patriat, M. (2020b). The Loyalty Islands and Ridge,
868 New Caledonia. *Geological Society, London, Memoirs*, 51(1), 131–145.
869 <https://doi.org/10.1144/M51-2017-24>

870 Mayr, G. (2017). Avian higher level biogeography: Southern hemispheric origins or southern
871 hemispheric relicts? *Journal of Biogeography*, 44(4), 956–958.
872 <https://doi.org/10.1111/jbi.12943>

873 Meseguer, A. S., Lobo, J. M., Ree, R., Beerling, D. J., & Sanmartín, I. (2015). Integrating
874 fossils, phylogenies, and niche models into biogeography to reveal ancient evolutionary
875 history: the case of *Hypericum* (Hypericaceae). *Systematic Biology*, 64(2), 215–232.
876 <https://doi.org/10.1093/sysbio/syu088>

877 Michaux, B., & Ung, V. (2021). Biotectonics of Sulawesi: Principles, methodology, and area
878 relationships. *Zootaxa*, 5068(4), 451–484. <https://doi.org/10.11646/zootaxa.5068.4.1>

879 Montes, C., Silva, C. A., Bayona, G. A., Villamil, R., Stiles, E., Rodriguez-Corcho, A. F.,
880 Beltran-Triviño, A., Lamus, F., Muñoz-Granados, M. D., Pérez-Angel, L. C., Hoyos,
881 N., Gomez, S., Galeano, J. J., Romero, E., Baquero, M., Cardenas-Rozo, A. L., & von
882 Quadt, A. (2021). A Middle to Late Miocene trans-andean portal: geologic record in the
883 tatacoa desert. *Frontiers in Earth Science*, 8, 587022.
884 <https://doi.org/10.3389/feart.2020.587022>

885 Murienne, J., Grandcolas, P., Piulachs, M. D., Bellés, X., D'Haese, C., Legendre, F., Pellens,
886 R., & Guilbert, E. (2005). Evolution on a shaky piece of Gondwana: Is local endemism
887 recent in New Caledonia? *Cladistics*, 21(1), 2–7. [https://doi.org/10.1111/j.1096-](https://doi.org/10.1111/j.1096-0031.2004.00042.x)
888 [0031.2004.00042.x](https://doi.org/10.1111/j.1096-0031.2004.00042.x)

889 Murienne, J. (2009). Testing biodiversity hypotheses in New Caledonia using phylogenetics.
890 *Journal of Biogeography*, 36(8), 1433–1434. [https://doi.org/10.1111/j.1365-](https://doi.org/10.1111/j.1365-2699.2009.02143.x)
891 [2699.2009.02143.x](https://doi.org/10.1111/j.1365-2699.2009.02143.x)

892 Nattier, R., Pellens, R., Robillard, T., Jourdan, H., Legendre, F., Caesar, M., Nel, A., &
893 Grandcolas, P. (2017). Updating the phylogenetic dating of new caledonian biodiversity
894 with a meta-analysis of the available evidence. *Scientific Reports*, 7(1), 3705.
895 <https://doi.org/10.1038/s41598-017-02964-x>

896 Nattier, R., Robillard, T., Desutter-Grandcolas, L., Couloux, A., & Grandcolas, P. (2011).
897 Older than New Caledonia emergence? A molecular phylogenetic study of the
898 enoapterine crickets (Orthoptera: Grylloidea). *Journal of Biogeography*, 38(11), 2195–
899 2209. <https://doi.org/10.1111/j.1365-2699.2011.02563.x>

900 Papadopoulou, A., Cardoso, A., & Gómez-Zurita, J. (2013). Diversity and diversification of
901 Eumolpinae (Coleoptera: Chrysomelidae) in New Caledonia. *Zoological Journal of the*
902 *Linnean Society*, 168(3), 473–495. <https://doi.org/10.1111/zoj.12039>

903 Paradis, E., & Schliep, K. (2019). Ape 5.0: An environment for modern phylogenetics and
904 evolutionary analyses in R. *Bioinformatics*, 35(3), 526–528.
905 <https://doi.org/10.1093/bioinformatics/bty633>

906 Parham, J. F., Donoghue, P. C. J., Bell, C. J., Calway, T. D., Head, J. J., Holroyd, P. A.,
907 Inoue, J. G., Irmis, R. B., Joyce, W. G., Ksepka, D. T., Patané, J. S. L., Smith, N. D.,
908 Tarver, J. E., van Tuinen, M., Yang, Z., Angielczyk, K. D., Greenwood, J. M., Hipsley,
909 C. A., Jacobs, L., ... Benton, M. J. (2012). Best practices for justifying fossil
910 calibrations. *Systematic Biology*, 61(2), 346–359. <https://doi.org/10.1093/sysbio/syr107>

911 Pearse, W. D., Barbosa, A. M., Fritz, S. A., Keith, S. A., Harmon, L. J., Harte, J., Silvestro,
912 D., Xiao, X., & Davies, T. J. (2018). Building up biogeography: Pattern to process.
913 *Journal of Biogeography*, 45(6), 1223–1230. <https://doi.org/10.1111/jbi.13242>

914 Pelletier, B. (2007). Geology of the New Caledonia region and its implications for the study
915 of the new caledonian biodiversity. In C. Payri & B. Richer de Forgers, *Compendium of*
916 *marine species from New Caledonia: Vol. 7* (Nouméa: IRD, 2007) (Second Edition, pp.
917 19–32).

918 Philippon, M., Cornée, J.-J., Münch, P., van Hinsbergen, D. J. J., BouDagher-Fadel, M.,
919 Gailler, L., Boschman, L. M., Quillevere, F., Montheil, L., Gay, A., Lebrun, J. F.,
920 Lallemand, S., Marivaux, L., Antoine, P.-O., & with the GARANTI Team. (2020).
921 Eocene intra-plate shortening responsible for the rise of a faunal pathway in the
922 northeastern Caribbean realm. *PLOS ONE*, 15(10), e0241000.
923 <https://doi.org/10.1371/journal.pone.0241000>

924 Princis, K. (1966). Pars 8: Blattariae: Subordo Blattoidea, Fam.: Blattidae, Nocticolidae. In
925 M. Beier (Ed.), *Orthopterorum Catalogus* (pp. 401–614). Uitgeverij Dr. W. Junk.

926 Qiu, L., Liu, Y.-C., Wang, Z.-Q., & Che, Y.-L. (2020). The first blattid cockroach
927 (Dictyoptera: Blattodea) in Cretaceous amber and the reconsideration of purported
928 Blattidae. *Cretaceous Research*, 109, 104359.
929 <https://doi.org/10.1016/j.cretres.2019.104359>

930 Ree, R. H., Moore, B. R., Webb, C. O., & Donoghue, M. J. (2005). A likelihood framework
931 for inferring the evolution of geographic range on phylogenetic trees. *Evolution*,
932 59(11), 2299–2311. <https://doi.org/10.1111/j.0014-3820.2005.tb00940.x>

933 Ribas, C. C., Fritz, S. C., & Baker, P. A. (2022). The challenges and potential of
934 geogenomics for biogeography and conservation in Amazonia. *Journal of*
935 *Biogeography*, in press. <https://doi.org/10.1111/jbi.14452>

936 Ronquist, F., & Huelsenbeck, J. P. (2003). MrBayes 3: Bayesian phylogenetic inference
937 under mixed models. *Bioinformatics*, 19(12), 1572–1574.
938 <https://doi.org/10.1093/bioinformatics/btg180>

939 Ronquist, F., & Sanmartín, I. (2011). Phylogenetic methods in biogeography. *Annual Review*
940 *of Ecology, Evolution, and Systematics*, 42(1), 441–464.
941 <https://doi.org/10.1146/annurev-ecolsys-102209-144710>

942 Rouillard, P., Collot, J., Sutherland, R., Bache, F., Patriat, M., Etienne, S., & Maurizot, P.
943 (2017). Seismic stratigraphy and paleogeographic evolution of Fairway Basin, Northern
944 Zealandia, Southwest Pacific: From Cretaceous Gondwana breakup to Cenozoic
945 Tonga-Kermadec subduction. *Basin Research*, 29, 189–212.
946 <https://doi.org/10.1111/bre.12144>

947 Scotese, C. (2016). PALEOMAP PaleoAtlas for Gplates and the PaleoData Plotter Program.
948 275387. <https://doi.org/10.1130/abs/2016NC-275387>

949 Seidel, M., Sýkora, V., Leschen, R. A. B., Clarkson, B., & Fikáček, M. (2021). Ancient
950 relicts or recent immigrants? Different dating strategies alter diversification scenarios
951 of New Zealand aquatic beetles (Coleoptera: Hydrophilidae: *Berosus*). *Molecular*

952 *Phylogenetics and Evolution*, 163, 107241.
953 <https://doi.org/10.1016/j.ympcv.2021.107241>

954 Sharma, P., & Giribet, G. (2009). A relict in New Caledonia: Phylogenetic relationships of
955 the family Troglosironidae (Opiliones: Cyphophthalmi). *Cladistics*, 25(3), 279–294.
956 <https://doi.org/10.1111/j.1096-0031.2009.00252.x>

957 Sharma, P. P., & Wheeler, W. C. (2013). Revenant clades in historical biogeography: The
958 geology of New Zealand predisposes endemic clades to root age shifts. *Journal of*
959 *Biogeography*, 40(8), 1609–1618. <https://doi.org/10.1111/jbi.12112>

960 Silvestro, D., Zizka, A., Bacon, C. D., Cascales-Miñana, B., Salamin, N., & Antonelli, A.
961 (2016). Fossil biogeography: A new model to infer dispersal, extinction and sampling
962 from palaeontological data. *Philosophical Transactions of the Royal Society B:*
963 *Biological Sciences*, 371(1691), 20150225. <https://doi.org/10.1098/rstb.2015.0225>

964 Smith, S. A. (2009). Taking into account phylogenetic and divergence-time uncertainty in a
965 parametric biogeographical analysis of the Northern Hemisphere plant clade
966 Caprifoliae. *Journal of Biogeography*, 36(12), 2324–2337.
967 <https://doi.org/10.1111/j.1365-2699.2009.02160.x>

968 Smith, S. A., Sadler, R. A., Bauer, A. M., Austin, C. C., & Jackman, T. (2007). Molecular
969 phylogeny of the scincid lizards of New Caledonia and adjacent areas: Evidence for a
970 single origin of the endemic skinks of Tasmantis. *Molecular Phylogenetics and*
971 *Evolution*, 43(3), 1151–1166. <https://doi.org/10.1016/j.ympcv.2007.02.007>

972 Sukumaran, J., & Knowles, L. L. (2018). Trait-dependent biogeography: (re)integrating
973 biology into probabilistic historical biogeographical models. *Trends in Ecology &*
974 *Evolution*, 33(6), 390–398. <https://doi.org/10.1016/j.tree.2018.03.010>

975 Sutherland, R., Dickens, G. R., Blum, P., Agnini, C., Alegret, L., Asatryan, G., Bhattacharya,
976 J., Bordenave, A., Chang, L., Collot, J., Cramwinckel, M. J., Dallanave, E., Drake, M.
977 K., Etienne, S. J. G., Giorgioni, M., Gurnis, M., Harper, D. T., Huang, H.-H. M.,
978 Keller, A. L., ... Zhou, X. (2020). Continental-scale geographic change across
979 Zealandia during Paleogene subduction initiation. *Geology*, 48(5), 419–424.
980 <https://doi.org/10.1130/G47008.1>

981 Svenning, J.-C., Eiserhardt, W. L., Normand, S., Ordonez, A., & Sandel, B. (2015). The
982 influence of paleoclimate on present-day patterns in biodiversity and ecosystems.
983 *Annual Review of Ecology, Evolution, and Systematics*, 46(1), 551–572.
984 <https://doi.org/10.1146/annurev-ecolsys-112414-054314>

985 Tang, Q., Bourguignon, T., Willenmse, L., De Coninck, E., & Evans, T. (2019). Global
986 spread of the German cockroach, *Blattella germanica*. *Biological Invasions*, 21(3),
987 693–707. <https://doi.org/10.1007/s10530-018-1865-2>

988 Trifinopoulos, J., Nguyen, L.-T., von Haeseler, A., & Minh, B. Q. (2016). W-IQ-TREE: A
989 fast online phylogenetic tool for maximum likelihood analysis. *Nucleic Acids Research*,
990 44(W1), W232–W235. <https://doi.org/10.1093/nar/gkw256>

991 Upchurch, P. (2008). Gondwanan break-up: Legacies of a lost world? *Trends in Ecology &*
992 *Evolution*, 23(4), 229–236. <https://doi.org/10.1016/j.tree.2007.11.006>

993 Vaidya, G., Lohman, D. J., & Meier, R. (2011). SequenceMatrix: Concatenation software for
994 the fast assembly of multi-gene datasets with character set and codon information.
995 *Cladistics*, 27(2), 171–180. <https://doi.org/10.1111/j.1096-0031.2010.00329.x>

996 Vicente, N., Kergoat, G. J., Dong, J., Yotoko, K., Legendre, F., Nattier, R., & Robillard, T.
997 (2017). In and out of the Neotropics: Historical biogeography of Eneopterinae crickets.
998 *Journal of Biogeography*, 44(10), 2199–2210. <https://doi.org/10.1111/jbi.13026>

999 Violle, C., Reich, P. B., Pacala, S. W., Enquist, B. J., & Kattge, J. (2014). The emergence and
1000 promise of functional biogeography. *Proceedings of the National Academy of Sciences*,
1001 111(38), 13690–13696. <https://doi.org/10.1073/pnas.1415442111>

1002 Wisniewski, A. L., Lloyd, G. T., & Slater, G. J. (2022). Extant species fail to estimate
1003 ancestral geographical ranges at older nodes in primate phylogeny. *Proceedings of the*
1004 *Royal Society B: Biological Sciences*, 289(1975), 20212535.
1005 <https://doi.org/10.1098/rspb.2021.2535>

1006

1007 **TABLE AND FIGURE CAPTIONS**

1008

1009 **Table 1. Time slices used in *BioGeoBEARS* analyses and justifying associated events and**
1010 **references.** Emersion of New Caledonia (NC) or proto-NC is indicated following Maurizot
1011 & Campbell, 2020.

1012

1013 **Figure 1. Timeline of emersion in the Southwest Pacific region according to the four**
1014 **biogeographic hypotheses (H0-H3) modeled in *BioGeoBEARS*.** The timeline is divided
1015 according to the time slices used in *BioGeoBEARS*, a beige segment indicating that at least
1016 one of the three considered landmasses—New Caledonia (NC; brown circle), "Lord Howe
1017 route" (LH; red semicircle) or "Three Kings route" (TK; purple semicircle)—is emerged, and
1018 a blue segment indicating general drowning of these three landmasses. Antarctica (AT),
1019 Australia (AU), New Guinea (NG) and New Zealand (NZ) are considered always emerged.
1020 Interpretative maps, modified from Maurizot & Campbell (2020) are given respectively for
1021 the immediate pre-drowning period (84 Ma), for the general drowning period (66 Ma), and
1022 for the period following the obduction of New Caledonia (34 Ma).

1023

1024 **Figure 2. Dated molecular phylogeny and biogeographic history of Blattoidea.** Timetree
1025 derived from the Maximum Clade Credibility BEAST consensus tree with median ages, 95%
1026 credibility interval for major nodes (blue horizontal bars), and most probable ranges
1027 recovered by *BioGeoBEARS* under a DEC + J model (H2 hypothesis; maximum of two areas;
1028 $d = 0.0019$; $e = 0.0013$; $j = 0.0679$). Geographic ranges for species are indicated left to the
1029 taxa names and refer to the colors used in the map in the upper left part of the figure. A
1030 schematic representation of the positions of vanished landmasses relative to New Caledonia
1031 (NC) is given in the pink insert below the global map (LH for 'Lord Howe' and TK for
1032 'Three Kings' routes). Time slices used in the *BioGeoBEARS* analyses are represented by
1033 vertical dashed lines, with the general drowning period between -75 Ma and -60 Ma
1034 highlighted in blue. Posterior probabilities (PP) over 0.95 are noted with an asterisk and the
1035 five fossil calibrations are also depicted: 1 = *Cretaholocompsa montesecana* Martínez-
1036 Delclòs, 1993; 2 = *Archeorhinotermes rossi* Krishna and Grimaldi, 2003; 3 = *Valditermes*
1037 *brenanae* Jarzembowski, 1981; 4 = "*Gyna*" *obesa* (Piton, 1940); 5 = *Cretaperiplaneta*
1038 *kaonashi* Qiu et al., 2020. Picture of *Tryonicus* sp. (T. Schubnel©).

1039

1040 **Figure 3. Alternative scenario for Tryonicidae and the clade P2 (within Polyzosteriinae)**
1041 **according to H0 and H1 hypotheses (DEC + J; maximum range of two areas).** Both
1042 hypotheses suggest multiple colonization events from Australia (Tryonicidae; bottom) and
1043 Antarctica (clade P2; top). Terminal branches of the Maximum Clade Credibility BEAST tree
1044 are collapsed for simplicity. Color codes follow Figures 1 and 2 and are repeated on the top
1045 left. Time slices are indicated by vertical dashed lines. The horizontal dash line separates the
1046 two focal clades.
1047
1048

1049 **APPENDICES**

1050

1051 **Appendix S1.** Complete list of taxa, vouchers and sequences used in this study (including
1052 GenBank accession numbers, with newly generated sequences in bold).

1053

1054 **Appendix S2.** Fossil choices and their justifications, including ages, authors and calibrated
1055 clades.

1056

1057 **Appendix S3.** Data and script files for phylogenetic and dating analyses.

1058

1059 **Appendix S4.** Information regarding time slices and associated events at a global level.

1060

1061 **Appendix S5.** Data and R script files of the different analyses run with *BioGeoBEARS*.

1062

1063 **Appendix S6.** Results of the phylogenetic ML and Bayesian inference on the full dataset.

1064

1065 **Appendix S7.** BEAST dating estimates and 95% credibility intervals for the analyses
1066 wherein *Cretaperiplaneta kaonashi* is either removed or calibrate different nodes.

1067

1068 **Appendix S8.** Results from the different *BioGeoBEARS* analyses.

1069

1070 **BIOSKETCH**

1071

1072 Our team is broadly interested in the biogeography of South-East Asia and the Pacific, with a
1073 special interest in the New Caledonian biota. This works represents a chapter of the PhD
1074 thesis of Julien Malem, who works at the interface between geology and biology to better
1075 understand the paradoxical occurrence of old lineages on younger islands.

1076

1077 Author contributions: JM, TR, PG and FL conceived the ideas; TR, PG and FL collected
1078 specimens in the field; FL generated molecular data; JM, DC and LB gathered and
1079 synthesized geological data; JM, TR and FL analyzed the data with inputs from all authors as
1080 to their interpretations; JM and FL led the writing with assistance from all authors.