



**HAL**  
open science

## From molecules in solution to molecules on surfaces – using supramolecular dyads to form functional self-assembled networks on graphene

Quentin Fernez, Shiva Moradmand, Michele Mattera, William Djampa-Tapi,  
Céline Fiorini-Debuisschert, Fabrice Charra, David Kreher, Fabrice Mathevet,  
Imad Arfaoui, Lydia Sosa Vargas

### ► To cite this version:

Quentin Fernez, Shiva Moradmand, Michele Mattera, William Djampa-Tapi, Céline Fiorini-Debuisschert, et al.. From molecules in solution to molecules on surfaces – using supramolecular dyads to form functional self-assembled networks on graphene. *Mechanochemistry: Fundamentals, applications and future Faraday Discussion*, Sep 2022, Cambridge, United Kingdom. . hal-04423796

**HAL Id: hal-04423796**

**<https://cnrs.hal.science/hal-04423796v1>**

Submitted on 29 Jan 2024

**HAL** is a multi-disciplinary open access archive for the deposit and dissemination of scientific research documents, whether they are published or not. The documents may come from teaching and research institutions in France or abroad, or from public or private research centers.

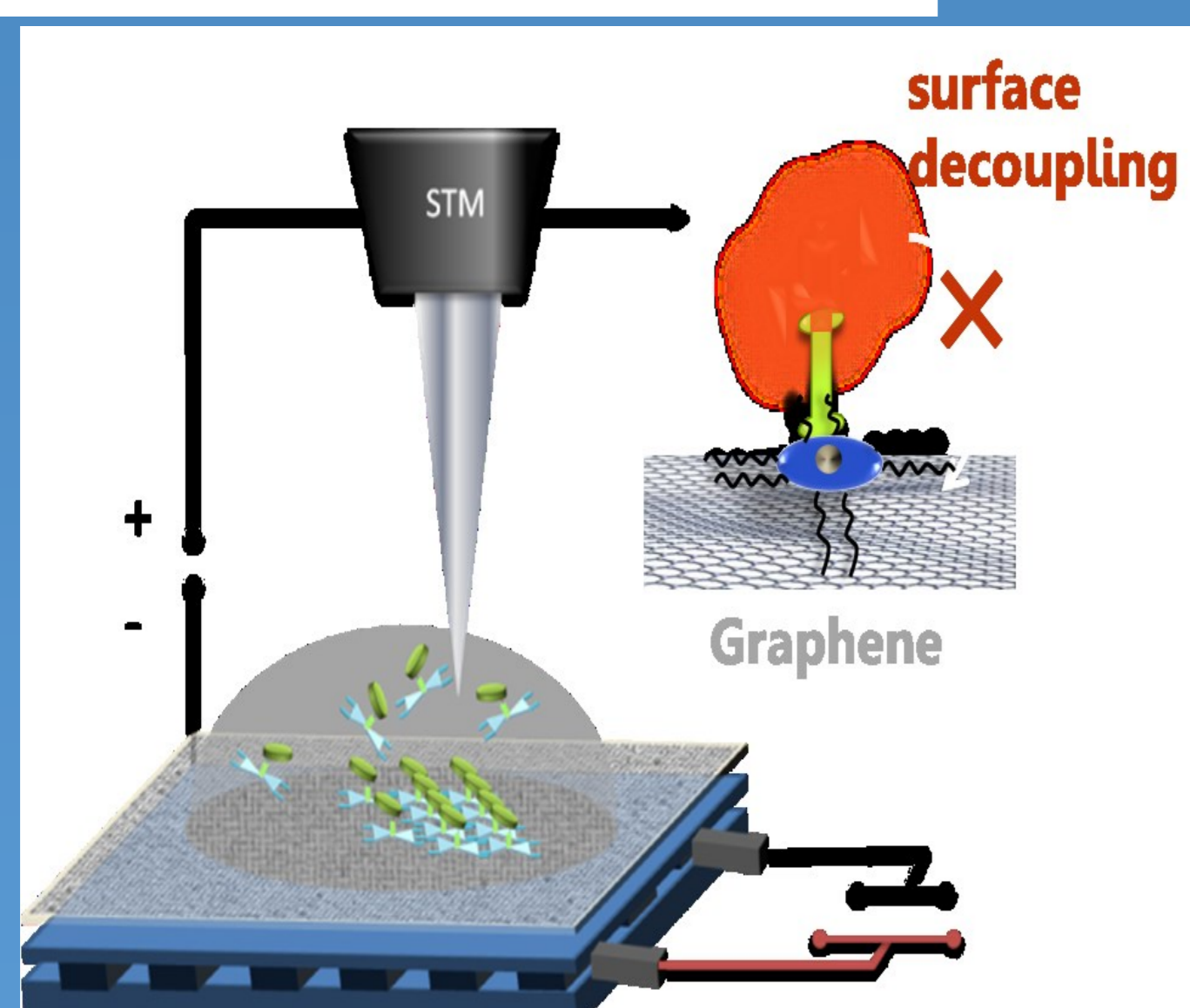
L'archive ouverte pluridisciplinaire **HAL**, est destinée au dépôt et à la diffusion de documents scientifiques de niveau recherche, publiés ou non, émanant des établissements d'enseignement et de recherche français ou étrangers, des laboratoires publics ou privés.

# From molecules in solution to molecules on surfaces – using supramolecular dyads to form functional self-assembled networks on graphene

Quentin Fernez<sup>a</sup>, Shiva Moradmand<sup>b</sup>, Michele Mattera<sup>a</sup>, William Djampa-Tapi<sup>c</sup>, Céline Fiorini-Debuisschert<sup>c</sup>, Fabrice Charra<sup>c</sup>, **David Kreher**<sup>a,d</sup>, Fabrice Mathevet<sup>a</sup>, Imad Arfaoui<sup>b</sup> and Lydia Sosa Vargas<sup>a</sup>

<sup>a</sup> Sorbonne Université, CNRS, Institut Parisien de Chimie Moléculaire (IPCM), F-75005, Paris, France ; <sup>b</sup> Sorbonne Université, CNRS, Laboratoire de la Molécule aux Nano-Objets: Réactivité, Interactions et Spectroscopies (MONARIS), F-75005, Paris, France ; <sup>c</sup> Université Paris-Saclay, CEA-CNRS, Service de Physique de l'état condensé (SPEC-91191), Gif-sur-Yvette, France; <sup>d</sup> Université Paris-Saclay, UVSQ-CNRS UMR 8180, Institut Lavoisier de Versailles (ILV), F-78035, Versailles, France

## INTRODUCTION and GOALS



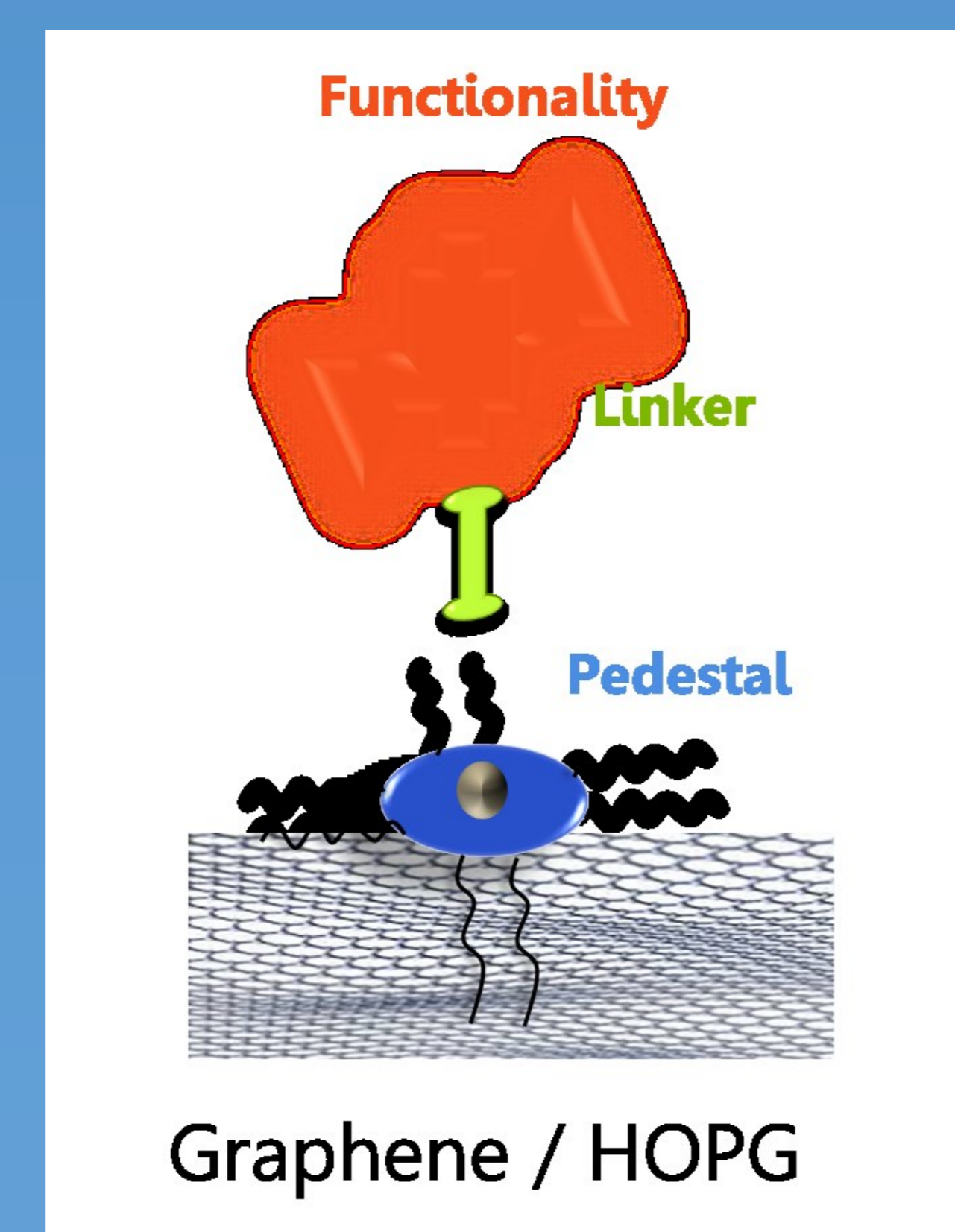
To develop new functional materials, nanoscopic scale architecture control is necessary<sup>1</sup>. As a bottom-up synthesis strategy, molecular self-assemblies on surface have been explored, and have demonstrated good control of patterning on various surfaces<sup>2</sup>. From these surfaces; graphene is of interest due to its versatility and potential in future semiconductive devices<sup>3</sup>. The work presented here describes the functionalization of a graphenoid surface via a supramolecular approach.

We aim to synthesis of **versatile** and **functionalized building-blocks** which **self-organize** on **graphenoid surfaces**. We are mainly interested in :

- **Tuning the surface** self-assembly via the functionalisation of the molecular building blocks
- **Grafting a fluorescent functionality** decoupled from the surface
- **Studying by Scanning Tunnelling Microscopy (STM)** the topology of the molecular 2D-assemblies

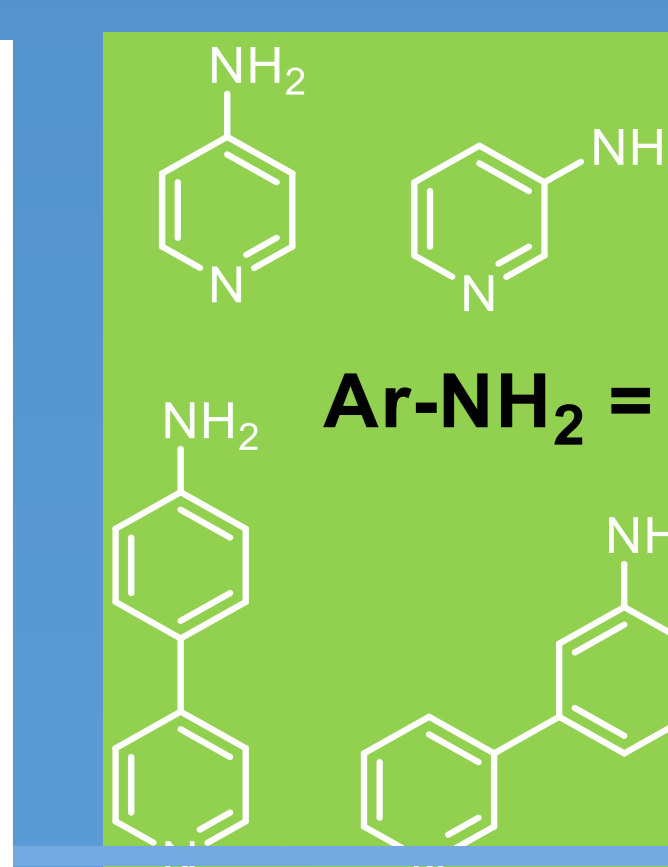
Q. Fernez et al., *J. Mat. Chem. C*, 2022, just accepted

## DESIGN STRATEGY



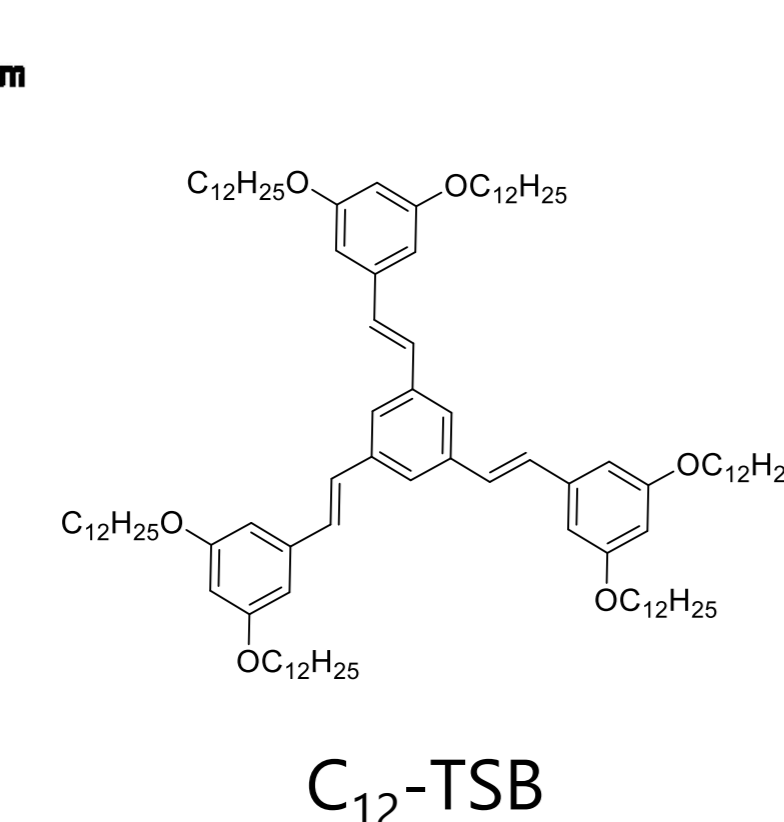
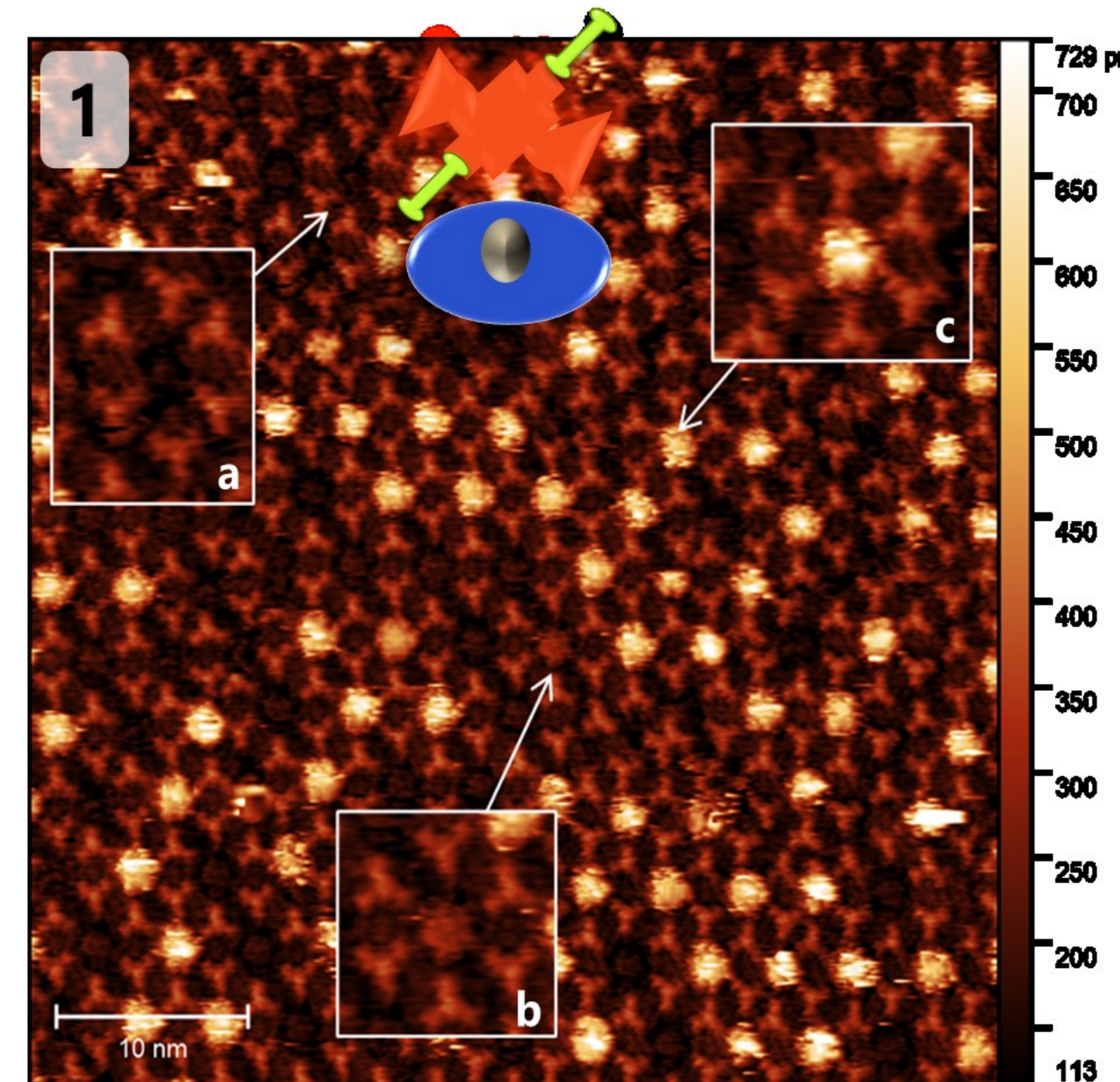
These 'smart' **building-blocks** were designed with the aim to develop a **homogeneous, functional, integrated self-assembly** on a graphenoid surface. With this molecular design strategy we are able to **fine-tune** the self-assembly, **orientation** and **functionality** via modification of:

- **Functionality:** a **perylene (PDI)**; with steric hindrance to avoid its assembly on the surface. It is a strongly fluorescent component. A donor/acceptor unit could replace it.
- **Linker:** a **pyridyl derivative**; decouple the functionality from the surface. Orientation and distance can be controlled by modifying it.
- **Pedestal:** a **phthalocyanine (Pc)**; functionalized on peripheral positions to enable the supramolecular self-assembly on the surface. A non-functionalized phthalocyanine was also used in host guest systems.



## SELF-ASSEMBLY PROPERTIES

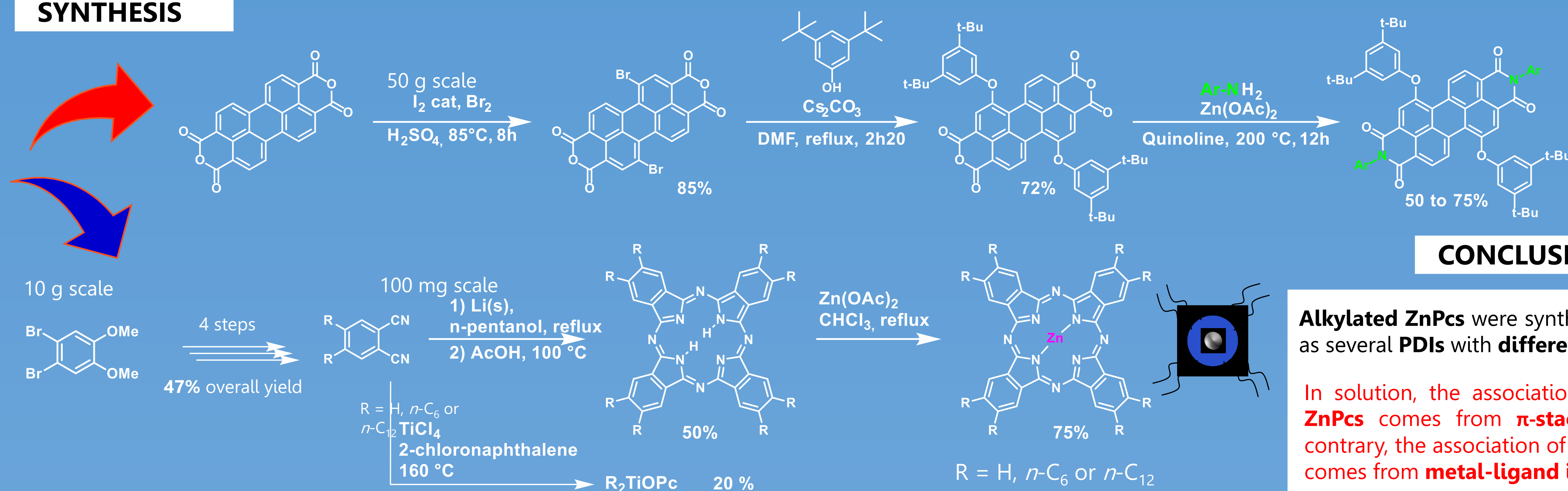
STM images are monolayers of several molecular pedestals on Highly Oriented Pyrolytic Graphite (HOPG) surfaces.



- **Host-guest network**
- **Orientation** of PDI with respect to ZnPc and HOPG surface is **unknown**
- After deposition of ZnPc-PDI (1-1) in C<sub>12</sub>-TSB host network: **3 different signals can be identified: the empty TSB pore (a), The TSB pore + ZnPc (b) and TSB pore hosting a ZnPc-PDI (c)**

STM image: Bias: -1,0 V, Current: 25 pA, Solid-liquid interface in phenyloctane

## SYNTHESIS



## CONCLUSIONS

**Alkylated ZnPcs** were synthesized as well as several **PDIs** with **different linkers**.

In solution, the association of **PDI with ZnPcs** comes from **π-stacking**. On the contrary, the association of **PDI with ZnPs** comes from **metal-ligand interactions**.