



HAL
open science

Interactions between climate change and urbanization will shape the future of biodiversity

Mark C Urban, Marina Alberti, Luc de Meester, Yuyu Zhou, Brian C Verrelli,
Marta Szulkin, Chloé Schmidt, Amy M Savage, Patrick Roberts, L. Ruth
Rivkin, et al.

► To cite this version:

Mark C Urban, Marina Alberti, Luc de Meester, Yuyu Zhou, Brian C Verrelli, et al.. Interactions between climate change and urbanization will shape the future of biodiversity. *Nature Climate Change*, 2024, 14 (5), pp.436 - 447. 10.1038/s41558-024-01996-2 . hal-04772017

HAL Id: hal-04772017

<https://cnrs.hal.science/hal-04772017v1>

Submitted on 7 Nov 2024

HAL is a multi-disciplinary open access archive for the deposit and dissemination of scientific research documents, whether they are published or not. The documents may come from teaching and research institutions in France or abroad, or from public or private research centers.

L'archive ouverte pluridisciplinaire **HAL**, est destinée au dépôt et à la diffusion de documents scientifiques de niveau recherche, publiés ou non, émanant des établissements d'enseignement et de recherche français ou étrangers, des laboratoires publics ou privés.


















Interactions between climate change and urbanization will shape the future of biodiversity

Received: 13 March 2023

Accepted: 22 March 2024

Published online: 26 April 2024

 Check for updates

Mark C. Urban ¹✉, Marina Alberti², Luc De Meester ^{3,4,5}, Yuyu Zhou ⁶, Brian C. Verrelli ⁷, Marta Szulkin ⁸, Chloé Schmidt⁹, Amy M. Savage¹⁰, Patrick Roberts ¹¹, L. Ruth Rivkin ^{12,13,14}, Eric P. Palkovacs ¹⁵, Jason Munshi-South ¹⁶, Anna N. Malesis ², Nyeema C. Harris ¹⁷, Kiyoko M. Gotanda ^{18,19,20}, Colin J. Garroway ¹², Sarah E. Diamond ²¹, Simone Des Roches ²², Anne Charmantier ²³ & Kristien I. Brans ^{24,25}

Climate change and urbanization are two of the most prominent global drivers of biodiversity and ecosystem change. Fully understanding, predicting and mitigating the biological impacts of climate change and urbanization are not possible in isolation, especially given their growing importance in shaping human society. Here we develop an integrated framework for understanding and predicting the joint effects of climate change and urbanization on ecology, evolution and their eco-evolutionary interactions. We review five examples of interactions and then present five hypotheses that offer opportunities for predicting biodiversity and its interaction with human social and cultural systems under future scenarios. We also discuss research opportunities and ways to design resilient landscapes that address both biological and societal concerns.

Climate change and urbanization are two of the most important human impacts on the planet^{1,2}. The global climate has warmed 1.2 °C during the past 120 years and could warm another 4 °C by 2100¹. Besides warming, climate change is also altering precipitation, surface

hydrology and sea levels¹. Concurrently, people increasingly live in cities³, with 68% expected to be urban dwellers by 2050². Urbanization, defined here as encompassing both demographic and associated physical changes⁴, is rapidly altering natural landscapes. Developing

¹Department of Ecology and Evolutionary Biology and Center of Biological Risk, University of Connecticut, Storrs, CT, USA. ²Department of Urban Design and Planning, University of Washington, Seattle, WA, USA. ³Leibniz-Institute of Freshwater Ecology and Inland Fisheries, Berlin, Germany. ⁴Institute of Biology, Freie Universität Berlin, Berlin, Germany. ⁵Laboratory of Aquatic Ecology, Evolution and Conservation, KU Leuven, Leuven, Belgium. ⁶Department of Geography and Urban Systems Institute, University of Hong Kong, Hong Kong, China. ⁷Center for Biological Data Science, Virginia Commonwealth University, Richmond, VA, USA. ⁸Institute of Evolutionary Biology, Faculty of Biology, Biological and Chemical Research Centre, University of Warsaw, Warsaw, Poland. ⁹German Center for Integrative Biodiversity Research (iDiv) Halle-Jena-Leipzig, Leipzig, Germany. ¹⁰Department of Biology and Center for Computational and Integrative Biology, Rutgers University–Camden, Camden, NJ, US. ¹¹isoTROPIC Research Group, Max Planck Institute of Geoanthropology, Jena, Germany. ¹²Department of Biological Sciences, University of Manitoba, Winnipeg, Manitoba, Canada. ¹³Polar Bears International, Bozeman, MT, USA. ¹⁴San Diego Zoo Wildlife Alliance, Escondido, CA, USA. ¹⁵Department of Ecology and Evolutionary Biology, University of California, Santa Cruz, CA, USA. ¹⁶Louis Calder Center and Department of Biological Sciences, Fordham University, Armonk, NY, USA. ¹⁷Applied Wildlife Ecology Lab, Yale School of the Environment, Yale University, New Haven, CT, USA. ¹⁸Department of Biological Sciences, Brock University, St. Catharines, Ontario, Canada. ¹⁹Département de Biologie, Université de Sherbrooke, Sherbrooke, Quebec, Canada. ²⁰Department of Zoology, University of Cambridge, Cambridge, UK. ²¹Department of Biology, Case Western Reserve University, Cleveland, OH, USA. ²²School of Aquatic and Fishery Sciences, University of Washington, Seattle, WA, USA. ²³CEFE, Univ Montpellier, CNRS, EPHE, IRD, Montpellier, France. ²⁴Department of Biology, Katholieke Universiteit Leuven, Leuven, Belgium. ²⁵Department of Biology, Vrije Universiteit Brussel, Brussels, Belgium. ✉e-mail: mark.urban@uconn.edu

sustainable cities will therefore be necessary to maintain links between people and biodiversity^{5–7}.

Both climate change and urbanization threaten global biodiversity and ecosystems^{5,8,9}. Climate change is expected to increase extinction rates, alter biodiversity patterns, degrade natural ecosystem processes and reduce their benefits to humans^{8,10}. Some organisms have responded to climate change by shifting their ranges⁸ or modifying their traits via phenotypic plasticity¹¹. Concurrently, some populations have genetically adapted to warmer temperatures¹², altered precipitation¹³, storms¹⁴ and ocean acidification¹⁵. Although cities occupy a small proportion of the global land surface, most people experience biodiversity there⁹, and biodiversity's effects extend far beyond the city^{16–21}. Urbanization affects population connectivity, community diversity and composition, and ecosystem properties^{9,19,22}. Urbanization also can elicit both adaptive and non-adaptive evolutionary processes^{5,17}, which can alter ecological interactions, ecosystem properties and ecological resilience^{16,23}, ultimately reshaping the links between nature and society⁹.

Despite the coincident challenges that climate change and urbanization pose, their biological effects are usually considered separately^{24–27}. Research on the biological impacts of climate change often ignores how cities affect climate change responses^{10,28}, and research on the biological impacts of urbanization often ignores the effects of changing climates^{9,17}. Yet the joint effects of climate change and urbanization might often depend on their reciprocal interactions. Moreover, the socioeconomic factors driving climate change also shape urbanization patterns, including the people most vulnerable to their outcomes, and their joint escalation often depends on the same policies and technological changes. We plot five possible socioeconomic pathways that assume different levels of urbanization and climate change^{29,30} in Fig. 1. Urbanization and climate change usually coincide, but urbanization can also occur without substantial climate change in a sustainability scenario assuming rapid technological innovation.

Here we develop a framework for understanding the interactive effects of climate change and urbanization on the ecology and evolution of species living in and near cities. We review five examples of these interactions and identify five general testable hypotheses. We then suggest several ways to improve the understanding of these joint disturbances and how to design landscapes that address both natural and societal concerns in a warmer and more urbanized world. We acknowledge the complex human elements of urbanization, including the role of cities in shaping economic and social inequality, which contribute to how climate change, urbanization and biodiversity interact. However, we focus on the biological impacts of urbanization and climate change on non-humans, as socioeconomic responses to urban expansion and climate change have been dealt with elsewhere³¹.

Integrating joint effects of climate change and urbanization

Throughout, we refer to climate change and urbanization as anthropogenic drivers that modify environments. Climate change and urbanization sometimes alter the same environmental conditions (hereafter, shared impacts), such as by jointly increasing temperatures. The joint effects of climate change and urbanization might be additive or interact synergistically or antagonistically. Alternatively, these impacts might be unique to each driver rather than being shared. Even when impacts are unique, biological responses might still interact non-additively, such as when adaptation to urban pollution constrains adaptation to climate change³².

Although urbanization affects climates at more local scales than global climate change^{24,33}, their joint impacts often extend well beyond the immediate cityscape^{16–21}, including interactions with species and ecosystems in surrounding regions and the long-distance tele-coupling of socioeconomic impacts³⁴. Particularly relevant to understanding their interaction is whether urban development patterns align with

climatic gradients. Cities are often connected by transportation networks into linear, interconnected nodes, which can run parallel (for example, north-to-south coastal North American cities) or orthogonal (for example, west-to-east Mediterranean cities) to climate gradients. This alignment can determine whether cities facilitate or impede dispersal or gene flow along latitudinal or elevational clines³⁵.

Interactions between climate change and multiple urban stressors can often explain variable responses in cities. For example, the phenology of plants in cities depends on both climate-induced warming and light pollution³⁶. Also, cities are highly heterogeneous and vary along multiple human dimensions, including population density, history, socioeconomics, and racial and cultural composition. These differences can affect the distribution of organisms, responses to urbanization and impacts on people. For instance, past discriminatory lending policies in the United States known as redlining deterred home ownership and investment in minority neighbourhoods³⁷. These practices led to fewer parks, shade-providing trees and other natural amenities³¹ that affect not just local ecosystems but also people's vulnerability to climate change.

The growing evidence that ecology and evolution meaningfully interact across similar temporal and spatial scales^{23,38} necessitates integrating their joint and potentially non-additive (hereafter, interactive) responses^{9,16,27}. Moreover, we recognize the need to incorporate humans into this framework because social dynamics reflect a rapidly changing reality, driving unexplored socioeco-evolutionary dynamics and affecting human well-being in tangible ways^{9,31}.

Joint climate change and urbanization effects

We highlight five well-understood examples of how climate change and urbanization jointly influence ecological and evolutionary processes. Although these examples do not represent all ways in which climate change and urbanization interact, they collectively demonstrate that such interactions influence a diversity of organisms and eco-evolutionary processes. An emerging conclusion from these examples is that although both climate change and urbanization often act in parallel on environments, ecology and evolution, their effects are not purely additive but often act antagonistically.

Temperature

The greenhouse gas accumulation that underlies climate change has warmed the world by 1.2 °C in the past century, while the heat island effect from urban land cover change has warmed cities by 2 °C, on average³⁹. These heat island effects are experienced globally, with different patterns depending on latitude, climate and biome as well as city-specific characteristics such as population density, impervious surface and canopy cover^{39,40} (Fig. 2). However, the rising temperatures from climate change and urban heat islands are non-additive. Due to differences in evapotranspiration, rural regions are warming more quickly than cities, thereby reducing future heat island effects by 24%^{24,41}. Irrigation in urban environments in arid regions also can reduce temperatures relative to rural regions, thus countering the local effects of climate-induced warming⁴².

Where climate change and urbanization jointly increase temperatures in cities, their aggregate effects can alter the biology of urban organisms^{24,43}, which can in turn modify urban microclimates. For instance, climate change increases urban tree growth and survival in cool climates but decreases tree survival in warm climates^{44,45}. Hence, climate change might promote tree shading in cooler climates while reducing shading in hotter climates, with impacts on both wildlife and people.

Joint warming might also induce phenotypic changes in urban organisms^{46,47}. Both climate change and urbanization induce later cessation of flowering in summer-blooming woody plants⁴⁸. However, an observed slowing of temperature-driven responses in urban plants might eventually reduce phenological responses to extreme

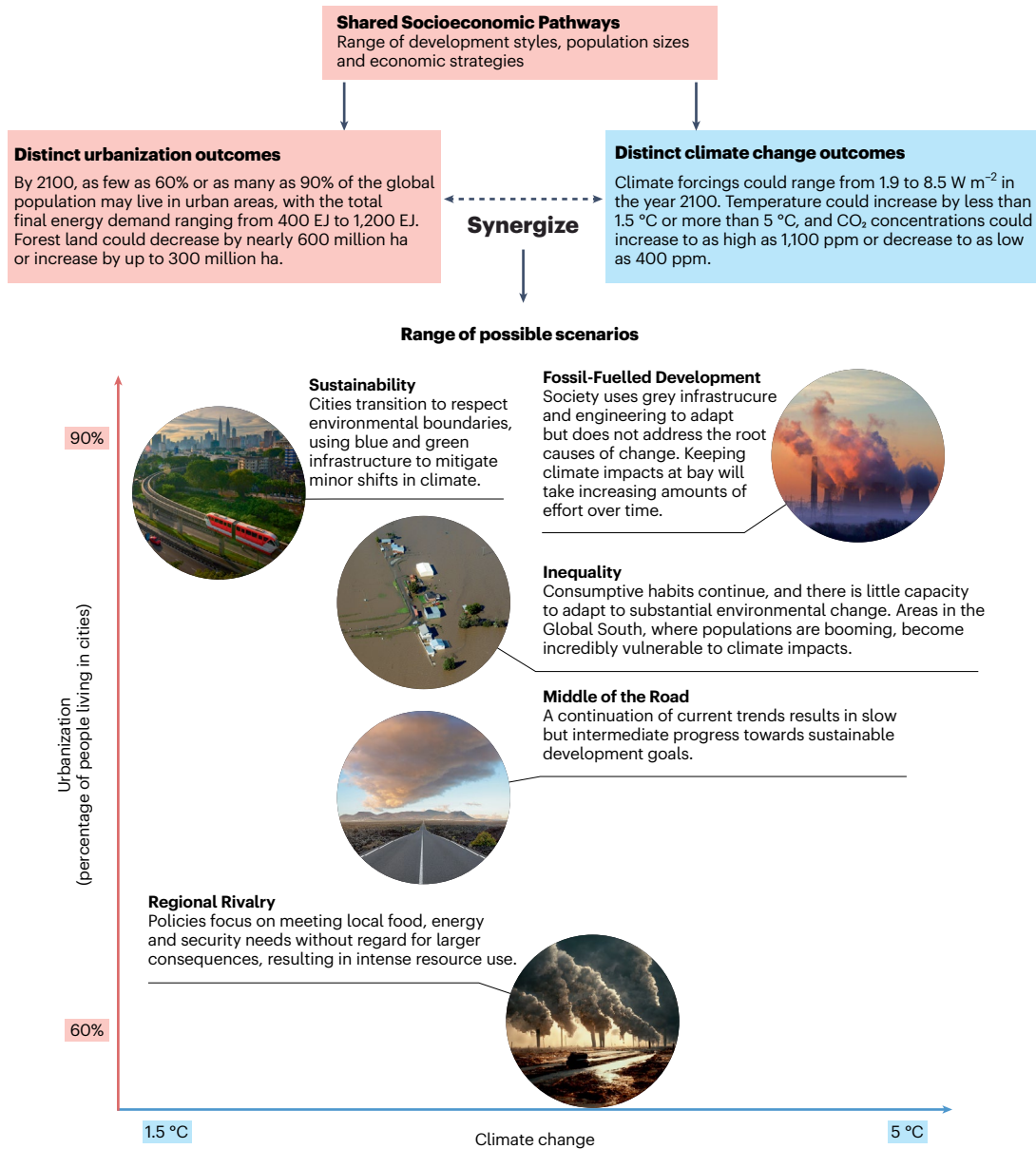


Fig. 1 | Future scenarios for global urbanization and climate change.

Different future scenarios for global urbanization and climate change as envisioned by the Shared Socioeconomic Pathways developed by the global climate change research community^{29,30}. The five scenarios depict the world in 2100, when 60–90% of the global population could live in cities and global temperatures could rise by 1.5 °C to 5 °C. These developmental and economic strategies often influence (and are influenced by) the land use and greenhouse gas emissions policies that jointly drive urbanization and climate change. However, alternative futures are possible. Although urbanization and climate change might occur jointly as depicted in the Fossil-Fuelled Development

scenario, a highly urbanized world with limited climate change is also possible assuming sufficient technological innovation as depicted in the Sustainability scenario. The difference between the two scenarios is that technology is applied in the Sustainability scenario to address the root causes of climate change. In addition, the Sustainability scenario assumes that the environmental effects of future cities are mediated by green design, and their compact design reduces impacts on surrounding natural areas. Note that these scenarios represent the main narratives that have been accepted by the global climate change research community to indicate divergent climate change projections, but many other scenarios are possible.

temperatures, with greater reductions expected in cities in cold climates⁴⁷. Moreover, such responses might differ among species or between urban and rural populations, potentially creating phenological mismatches that affect trophic interactions, pollination and mating^{49–51}. These phenotypic changes are also sometimes attributed to genetic adaptations to warming from urbanization and climate change^{12,52,53}. In such cases, adaptive responses to heat extremes from one driver might be co-opted for the other, assuming shared impacts. Alternatively, the extreme heat from both drivers might reduce population sizes, cause extirpations or decrease genetic variation for upper thermal limits⁵⁴, thus reducing overall adaptive capacity.

Water availability

In many dry climates, climate change is causing precipitation to decrease or become more variable¹. Climate change threatens many species that rely on predictable rainfall⁵⁵, but supplemental watering and irrigation of vegetation could help them. As climates dry, people in cities might water more to maintain desirable species, ecosystems and human benefits. To illustrate, annual primary productivity is usually higher in Phoenix, United States, than in the surrounding desert due to watering⁵⁶. City dwellers also create artificial ponds and lakes: water bodies increased 33-fold over 70 years in Phoenix and subsequently affected regional nitrogen cycling⁵⁷. Hence, cities might provide oases

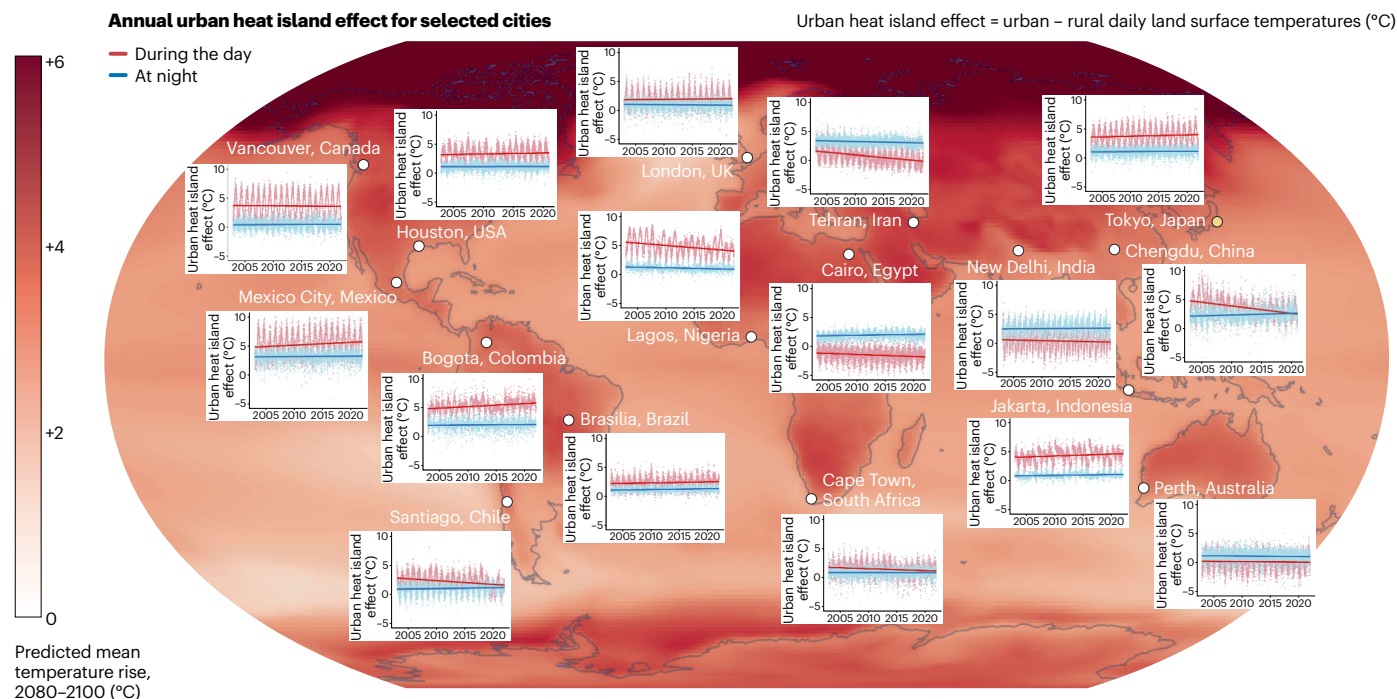


Fig. 2 | Global variation in urban heat island effects through time for selected global cities. The urban heat island effect is calculated as the annual land surface temperature in urban areas minus that in surrounding rural areas during the day (red) and night (blue) for 2003–2020 (for detailed methods, see Supplementary Information). Urban heat island effects range from -1°C to 6°C , and their relative magnitudes and temporal trends depend on regional climate and the interaction between temperature and humidity in urban and rural areas. Note that land

surface temperatures provide a different view than analyses based on air temperatures, by generally indicating a stronger urban heat island effect (larger temperature differences) at night than during the day⁴⁰. The base map depicts the mean annual surface temperature change (in $^{\circ}\text{C}$) in 2081–2100 for the SSP2-4.5 scenario based on 34 models from the IPCC WGI Interactive Atlas¹³¹. Data from refs. 132,133. Figure reproduced with permission from ref. 131 under a Creative Commons license [CC BY 4.0](https://creativecommons.org/licenses/by/4.0/).

for species as climate change dries surrounding areas. However, supplying that water often means denying water to other people or organisms, and therefore irrigation in cities might stop abruptly during water shortages, threatening water-dependent species.

Globally, variable precipitation often drives spatial patterns of selection and adaptation⁵⁸. Plants have adapted to irrigated agricultural areas⁵⁹ and to climate-induced drought¹³, suggesting the potential for fitness trade-offs to shape how urban and rural species differentially persist through drought. Adaptations to irrigated cityscapes could thus increase or decrease fitness, depending on how regional precipitation changes. These adaptations could provide services (for example, shade) or disservices (for example, vector-borne diseases) to humans⁶⁰.

Stream hydrology

Climate change and urbanization can also jointly alter streamflow, with the magnitude and direction of effects depending on regional climate and urban infrastructure^{25,61,62}. Climate change can cause extreme precipitation events in and downwind of cities⁶³, which produce larger stormflows^{61,64}. Impervious surfaces, reduced interception by vegetation, channelization and microclimatic alterations in the city can increase stormflow variability and magnitude and trigger flooding^{62,65}. In other regions, climate change reduces precipitation and river flows. High evaporative potential in urban environments can exacerbate drying effects on streams, whereas urban channelization can increase base and storm-related streamflow^{57,66}.

These joint impacts on streamflow can affect species through divergent interactive effects. For example, urbanization and the greater flow intermittency expected with climate change synergistically decreased stream macroinvertebrate richness by 80% in one study⁶⁷. However, the joint predicted responses of fish communities to urbanization and climate change were mostly antagonistic in another study²⁵.

Urbanization- and climate-driven changes in precipitation also can shape adaptive evolution. For example, climate-induced reductions in streamflow and saltwater exchange in Californian estuaries produced lotic habitats, which drove the evolution of reduced bony plates in stickleback fish⁶⁶. However, estuarine channelization, dredging and ocean breaching selected for more bony plates, highlighting how human modifications can act antagonistically on phenotypic evolution⁶⁶. More generally, a review of multiple stressors on aquatic biodiversity⁶⁸ suggests that they often act antagonistically, such that populations are resilient to multiple stressors due to existing co-adaptations to environmental heterogeneity.

Habitat connectivity

Many species must disperse to track their climatic niches as they shift across the landscape⁶⁹. Dispersal-limited species that cannot track shifting climates might undergo range retraction and experience increasing fragmentation⁷⁰. Urbanization also fragments habitats and therefore can enhance climate-mediated extinction risks by preventing species from tracking their moving climatic niche⁷¹. For example, expanding Californian cities have isolated mountain lion populations, threatening them with extirpation⁷². Species that would normally track climate change now face an increasingly inhospitable matrix due to urbanization^{35,73}, creating potential negative synergies between the two drivers.

Environments fragmented by urbanization can also select for species with different dispersal abilities relative to natural environments. For instance, insect assemblages in cities included better-dispersing species than those in rural areas^{74,75}. These changes in dispersal ability could also affect gene flow, adaptations to new disturbances, and recovery from inbreeding and genetic drift⁷⁶. For example, gene flow among poorly dispersing mice was limited in the city, whereas gene flow in free-flying bats remained high⁷⁷. Although urbanization reduces

gene flow for many species^{77,78}, it can also enhance connectivity relative to rural areas for others⁷⁹, such as black widow spiders and pepperweed^{80,81}. Improved urban connectivity for these species could thus counteract encroaching fragmentation from climate change.

Fragmentation from climate change and urbanization could also select for the evolution of either reduced or enhanced dispersal ability, depending on the mode and relative benefits of dispersal. Urban fragmentation selected for 5% fewer dispersing seeds of holy hawkbeard plants⁸² but was associated with 12% longer flights in urban damselflies⁸³. Climate-tracking species also might evolve increased dispersal at their range edge to colonize newly suitable, low-competition habitats^{69,84}. Hence, the evolution of dispersal in response to fragmentation from one driver could constrain or enhance the effects of fragmentation from the other driver.

Aquatic pollution

Urban water bodies are often polluted with excess nutrients⁸⁵, and climate-induced changes in precipitation can increase nutrient run-off in temperate regions and concentrate nutrients in arid regions⁸⁶. Increasing phosphorus, in particular, facilitates opportunistic phytoplankton such as cyanobacteria, which can produce a positive feedback that shades other species, promoting more cyanobacteria growth under warmer conditions⁸⁷. Simultaneously, climate change and urbanization raise water-body temperatures, jointly facilitating cyanobacteria growth⁸⁷.

Cyanobacteria can decrease lake species diversity, alter trophic dynamics, kill fish, degrade freshwater supplies and sicken people^{86,88}. Urbanization and climate change can synergistically shift water bodies towards dominance by toxic cyanobacteria, which threatens water quality and human health. Some grazers such as the water flea, however, adapt to consume toxic cyanobacteria, which reduces cyanobacteria and improves water quality^{89,90}. Adaptive shifts of consumer communities or populations towards resistant species or genotypes could therefore mediate these effects.

Joint hypotheses about climate change and urbanization

Given that the interaction of climate change and urbanization remains understudied, we next provide five testable hypotheses for how climate change and urbanization might interact to influence eco-evolutionary processes to spur research and fruitful debate (Fig. 3). These hypotheses are arranged to highlight potential advantages of city organisms over rural organisms, then potential advantages of rural organisms over city organisms, followed by changes in phenotypic synchrony and movement.

Out-of-the-city hypothesis

We predict that species and genotypes that thrive in cities, which are often characterized by broad, generalist niches¹⁹, will already possess traits that enable higher fitness under climate change, thus facilitating invasions into surrounding, less-developed regions^{26,53,91,92}. Species adapted to both urbanization and climate change can spread through multi-city networks, especially if urbanization and climate change gradients align and cities have similar characteristics. For example, urban ant communities are dominated by species better adapted to warmer and drier regions than nearby forest communities⁹³. These species might dominate further through human facilitation, including many introduced or cultivated species. As an example of this, many garden plants are already tracking climate change through cultivation and assisted migration by humans⁹⁴. If climate change has similar, city-like effects on environments in nearby undeveloped areas, these species might expand into the countryside and replace native species. For example, species that thrive in urban heat islands might readily colonize nearby rural areas that are warming through climate change.

Urban-adapted genotypes might also dominate during climate change. Urban acorn ants, water fleas and lizards have adapted to urban heat islands^{52,95,96} and thus might eventually spread into surrounding regions that are warming, promoting evolutionary rescue of those populations from climate change⁹⁷. If urban fragmentation causes or selects for better dispersal⁹⁸, these urban genotypes might spread even faster. Such dynamics can ultimately produce a race between migration from lower-latitude or lower-elevation rural populations as they track climate change and the expansion of local species or genotypes with traits adapted to cities that also match changing climate conditions^{70,99}. Given the geographic distance required for rural organisms to track climate change relative to urban genotypes, the adjacent urban organisms might win out. For instance, New York City daily temperatures are 2 °C warmer, on average, than those in nearby regions, which matches the same average temperatures in rural climates 220 km to the south.

These expanding urban species and genotypes might enhance the resilience of rural ecosystems by maintaining functional traits, but they could also threaten rare or threatened native species and spread human-aided species or genotypes. These urban species might disrupt ecosystems and human well-being if cities facilitate invasive species or disease agents that then spread outwards^{80,91,100}. Such joint dynamics could lead to the ‘urbanization’ of regional communities and population genetics, an analogue of ‘community thermophilization,’ whereby communities become dominated by warm-adapted species during climate change⁷⁴.

Urban organisms might also adapt to city-specific conditions that, through trade-offs, maladapt them to unique rural features. For instance, the water flea’s adaptations to pesticides also increase their susceptibility to natural parasites¹⁰¹. Thus, even if urban organisms adapt to shared conditions from urbanization and climate change, their adaptations to unique local conditions might limit their expansion into surrounding rural regions. Alternatively, impacts from urban organisms might be restricted to a small zone around cities, leaving larger-scale range shifts unaffected. Transplant experiments between cities and surrounding areas and experimental manipulations simulating future climate conditions provide important ways to test predictions from this hypothesis and each of the subsequent ones (Box 1 and Fig. 3)

City-to-city transfer hypothesis

We predict that cities arranged along climate gradients and linked via transportation corridors will promote the colonization of cities by urban-adapted species and genotypes, including under changed climates, thereby enhancing overall biotic homogenization across urban environments along climate gradients^{19,92}. Invasive species are often moved along urban transportation networks or intentionally introduced¹⁰², and plants cultivated beyond their normal range support more rapid range expansions in response to climate change⁹⁴. By maintaining native and exotic plants, urban green space can also supplement resources that facilitate climate tracking¹⁰³.

Urban corridors might also facilitate gene flow along climate gradients. One third of studies indicate that urbanization facilitates gene flow⁷⁹, and therefore cities already promote the movement of human-associated species, which can help them track climate change. Evidence for convergent adaptations across cities suggests that strong gene flow can homogenize urban genotypes and phenotypes^{80,81,104}. During climate change, this extensive gene flow could facilitate the expansion of genotypes already adapted to warming conditions into historically cooler regions, thus adapting populations to changing climates⁹⁴. Urban biodiversity could therefore be maintained regionally despite warming in a manner similar to that proposed for well-connected natural systems. Although such dynamics could maintain some species facing urbanization and climate change, they might also spread pests, human pathogens and invasive species across human-dominated landscapes as climates warm¹⁰⁵.

A common experimental design for testing hypotheses

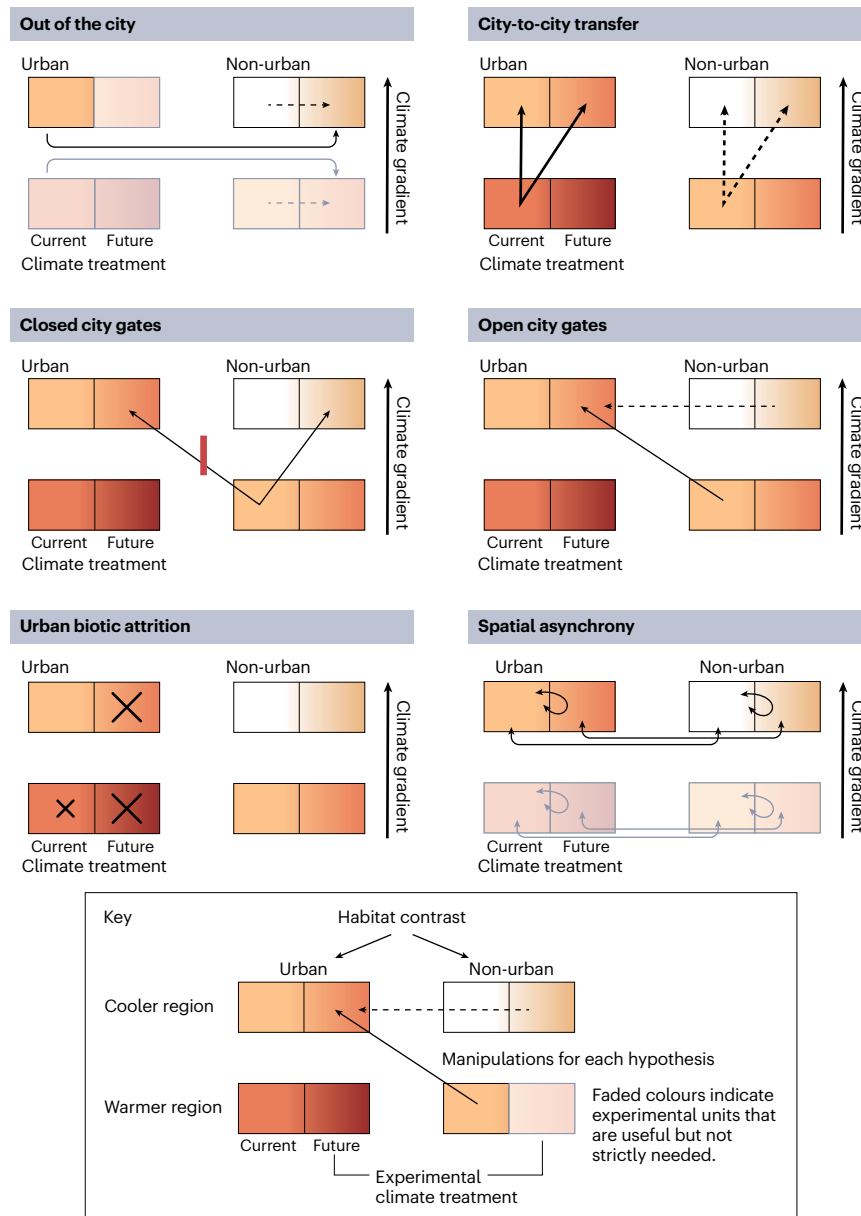


Fig. 3 | A common experimental design for testing hypotheses. Each row represents a different region aligned along a climate gradient, and the columns indicate urban and rural habitats. Within each region/habitat cell, there is a current, ambient climate condition (left) and a future, altered climate (right).

The arrows and symbols indicate the types of manipulations necessary to test the hypotheses. Dashed arrows indicate treatments predicted to be weaker than those indicated by solid arrows. Some predictions do not strictly require the full design and therefore are faded to simplify the design.

The city-to-city transfer hypothesis will be more likely for species associated with humans. This hypothesis also assumes that cities are similar enough that adaptations to one city are adaptive in other cities. Nearby cities connected by transportation corridors might be relatively similar but could still differ substantially in important characteristics such as socioeconomics, infrastructure and development patterns.

City gates hypotheses

We predict that urban organisms could exclude genotypes and species from rural areas expanding their ranges to track climate change if the spatial configuration of cities blocks their passage (closed city gates hypothesis). Urban species might possess traits that suit them to both urban and climate change conditions, thereby producing an ecological priority effect over other species tracking climatic changes²⁶. Such priority effects might occur through both more fit species and

better adapted genotypes, with the latter signalling an eco-evolutionary priority effect, whereby resident species adapt to local conditions and decrease the establishment of late-colonizing species or genotypes⁹⁹. Such dynamics have been observed in experiments¹⁰⁶ and across natural islands¹⁰⁷ but remain untested in cities. Furthermore, adaptation to the urban environment and potential expansion to nearby regions during climate change (see 'Out-of-the-city hypothesis') could prevent other species and genotypes from tracking climate change across regional landscapes, thereby increasing extinction risks and promoting adapted urban species over native species.

The city gate hypothesis depends on how well city genotypes and communities resist invasions, which, in turn, will depend on the species or genotypic characteristics that confer fitness advantages to both shared and unique conditions in cities and to climate change. Although scientists usually envision invasion dynamics as being dominated by

BOX 1

Designing experiments to test hypotheses

We developed a common transplant experiment design to test hypotheses (Fig. 3). We envision setting up experiments in paired urban and rural habitats along climate gradients (for example, latitude/altitude) with an ambient and a future climate manipulation (for example, raised temperature). Reciprocal transplants of populations would be especially useful to test local adaptation to urban/rural habitats and to regional climate, which would inform whether species, genotypes or both are manipulated in future experiments. If natural transplants are not possible because of ethical or practical concerns, then common garden experiments that manipulate key environmental factors can be implemented instead. Testing individual hypotheses will also require treatments with and without interactions between transplanted populations/species or that allow colonization of species from nearby habitats. The predicted outcomes of each hypothesis are:

Out-of-the-city hypothesis: Species or genotypes from the city outcompete rural species or genotypes in the rural climate change treatment.

City-to-city transfer hypothesis: Species or genotypes will easily establish in transplants in cities up the climate gradient and in the climate change treatment. This prediction also requires a monitoring programme to assess whether movements are greater between cities than between rural areas.

City gates hypotheses: Species or genotypes from rural areas will establish less (closed gate) or more (open gate) in cities than in rural areas along the climate gradient and in the climate change treatment.

Urban biotic attrition hypothesis: Species or genotypes from the city will decline in the climate change treatment and will not be invaded by other species or genotypes from the surrounding habitat relative to rural habitats.

Spatial asynchrony in species interactions hypothesis: Species with access to both urban and rural climate change experiments might have higher or lower fitness, depending on the specific interaction type, than those without because of the divergent phenologies of the species with which they interact.

competition, trophic or mutualistic interactions might also play important roles⁹⁹. Climate-expanding, generalist and superior competitors might overcome the ‘city gates’, while specialists and poor competitors might face higher thresholds, further homogenizing species assemblages and population genetics. However, if cities decrease population sizes and lower species and genetic diversity, then the opposite effect might occur by creating niches for climate-expanding species to invade, thus opening the city gates (open city gates hypothesis).

Urban biotic attrition hypothesis

We predict that cities could undergo ‘urban biotic attrition’, whereby cities lose species faster than surrounding regions, as adapted from the lowland biotic attrition hypothesis postulated for lowland tropical regions¹⁰⁸. Applying the same idea to cities, we propose that urban species diversity will decline during climate change because no species exist in the surrounding region that can survive novel urban climates and therefore colonize and replace the declining resident species. This effect would be more likely when cities are isolated and differ strongly from each other. For instance, cities might become the hottest places in

a region, and if interconnections with other cities are limited or those cities differ in attributes, then species extirpations might occur without replacement⁷¹. This lost diversity might reduce ecosystem stability and function and increasingly affect people, such as by increasing vector-borne disease¹⁰⁵ and exacerbating climate extremes by reducing urban trees and their cooling effect.

Urban biotic attrition might also affect genetic diversity by decreasing population sizes, increasing drift and eliminating adaptive variation. Similar to species, genotypes adapted to these no-analogue climates are unlikely to exist in neighbouring regions and provide a source of adaptive gene flow. In situ adaptation to no-analogue conditions might therefore be the only mechanism that maintains populations in these regions¹⁰⁹, but the loss of genetic diversity and maladaptive gene flow could reduce this potential for evolutionary rescue⁹⁷.

Spatial asynchrony in species interactions hypothesis

Both climate change and urbanization can affect the timing of life history events (phenology) such as green-up, migration and offspring production^{47,110,111}. When interacting species modify their phenologies at different rates in altered environments, the resulting phenological mismatch can alter interaction strengths and fitness³¹. As urbanization proceeds, phenological responses might diverge between urban and rural regions, which can exaggerate or diminish climate change effects¹¹⁰. Given these joint effects, we predict altered interactions for highly dispersive species that forage across urban-to-rural gradients. To illustrate, if a predator forages in both the city and the countryside, they might compensate for mismatches with their resources in one habitat by foraging more in the other habitat. For instance, fruit bats near Tel Aviv roost in rural areas but preferentially forage in the city, where they have adopted more exploratory and diverse diets¹¹². In addition, phenological delays between the two regions might provide a more continuous supply of resources for species that can track asynchronous peaks in resources through movement. For instance, urban regions often provide longer and more continuous floral resources for pollinators^{113,114}. Concurrently, climate change is expected to create phenological mismatches between plants and pollinators¹¹⁵, potentially allowing urban plantings to rescue some pollinators and their benefits to humans. Urbanization thus might buffer the effects of climate change on dispersive consumers and pollinators, assuming strong interactions and generalist species that span the urban-to-rural gradient through extensive movement patterns.

Climate change could lessen these asynchronies by reducing differences between cities and nearby regions. Climate change reduces phenological differences via antagonistic effects on conditions (for example, temperature and precipitation), biological constraints and the local counter-gradient adaptation of phenology. Evidence from plant green-up indicates a slowing down of phenological responses at high urban temperatures, suggesting that surrounding plant phenologies will catch up to cities as climate change progresses⁴⁷. Also, local adaptation of traits or plasticity could reduce asynchronies between urban and rural areas, as exemplified by the evolution of locally adapted flowering times in common ragweed¹¹⁶.

Future directions

We conclude by suggesting future directions that test the above hypotheses, develop additional ones and apply insights to create better cities for people and biodiversity.

Modelling joint interactions and impacts

An important next step is to develop better-coupled models of the joint impacts of climate change and urbanization that allow interactions between the drivers, their environmental impacts and eco-evolutionary feedbacks. Such coupled models often reveal unanticipated interactive effects¹¹⁷. These interactive effects will depend on climatic, social,

economic and ecological contexts; therefore, exploring how climate–urban interactions differ in strength or direction across realistic gradients will be critical to gain broader understanding.

Urban observation networks

Long-term, paired monitoring of urban and nearby rural ecosystems will play an important role in testing hypotheses (for example, ref. 118). Optimally, multiple monitoring sites would also be arranged along relevant axes of city characteristics such as age, history and socioeconomics. For example, the age of city infrastructure could influence existing genetic variation and whether organisms can adapt to novel selection¹¹⁹. Furthermore, researchers should scale from individual cities to multi-city networks given the hypothesized importance of city networks and connections with surrounding areas. This monitoring network could also test whether current urban responses can predict future climate responses. Monitoring should include not just species abundances but also traits attributed to plasticity and adaptations via experiments and adaptive and neutral genetics, with the latter indicating population sizes, connectivity and inbreeding. Inclusive community science, when combined with sufficient controls to facilitate accuracy, provides one way to collect these data in the places where people live, while involving local people in the scientific process. Long-term monitoring takes time to set up and bear results, and therefore it should be an immediate priority.

Realistically unnatural experiments

We advocate for experiments, as realistic in size, diversity and complexity as possible, that simulate interacting joint effects of climate change and urbanization and estimate the direction, strength and interactions of biological responses. Cities are already manipulated systems and are commonly touted as analogues of certain climatic changes¹²⁰. They therefore provide opportunities to leverage or design divergent urban management actions to facilitate whole-ecosystem experiments not normally possible in natural systems¹²⁰. For example, a herbivore's response to urban heat islands in one study predicted its response to global warming in natural habitats¹²¹. Towards this end, researchers could alter temperature, native vegetation, species compositions or genetics in experiments in both urban and rural environments to simulate impacts on climate change and its disparate effects across the urbanization gradient to test five hypotheses (Box 1). One could imagine introducing non-invasive species expanding their range with climate change (the city gates hypotheses) into some urban parks or constructed green habitats, but not others, and then evaluating whether and why they can survive and their overall impacts on ecosystems and people. Such introductions would first need to prove their safety and gain permission from local communities and authorities through an ethical and inclusive process.

Socio-ecological dynamics

Current research suggests that social, cultural and economic factors are embedded within urban policymaking, built environments and ecosystems and their benefits to humans, including important consequences for equality^{122,123}. For instance, research has demonstrated that poor neighbourhoods often have lower canopy cover and access to green infrastructure, which exacerbates human health risks from heat waves¹²⁴. As scientists test and develop hypotheses about interactions between climate change and urbanization, they should explicitly incorporate the socio-ecological dynamics that drive eco-evolutionary outcomes. Including social conditions in hypotheses will improve predictions for urban–eco-evolutionary dynamics and create more effective and equitable climate solutions for all people, especially historically excluded groups.

More systematic attention should be focused on how technology transforms the relationship between people and the natural world in cities²⁷. For example, the emergence of autonomous systems poses

both challenges and opportunities to minimize impacts from climate change and urbanization¹²⁵. Another aspect relates to how political and belief systems affect urban and climate change resilience. One prediction is that cities with strong environmental policies will be more resilient to climate change. However, this link might be weakened if climate change is not a specific environmental priority or if interactions between urbanization and climate change are not considered. Moreover, research should consider which socioeconomic elements of a given city are 'resilient' in different scenarios and policies. For example, research should consider the major beneficiaries and leaders of political and economic systems and the large extensions of slums or poor neighbourhoods that comprise substantial portions of many emerging mega-cities in different parts of the world.

Building climate-resilient cities

Studying the interactive effects of climate change and urbanization could also improve the ability to design, renovate and rebuild cities damaged by extreme weather, war or other disasters in a way that makes them more resilient to climate change¹²⁶. For example, the design of older cities often exacerbates climate change effects, such as by concentrating flooding and heat island effects and excluding natural corridors or parks. As society envisions cities of the future, nature-based solutions can mitigate the joint effects of climate change and urbanization¹²⁷. Adding natural vegetation and aquatic infrastructure can dampen climate change extremes in cities, which could reduce out-of-the-city dispersal and urban attrition (two of our hypotheses) while also providing benefits to people, ranging from pollination to improved mental well-being. Society can also make better decisions about green infrastructure by supporting larger natural areas in cities and creating corridors between these areas to promote genetic variability¹²⁸. Creating climate-resilient cities can also begin to address social inequalities in access to nature and its benefits. Low-income, marginalized communities often bear the brunt of both climate change and intense urban development^{9,31}. Situating nature-based solutions preferentially in these neighbourhoods could address these historical legacies.

Arranging green infrastructure within and between cities into strips parallel to climatic gradients would create corridors to allow species to track climate change and thus facilitate, rather than impede, movement through cities³⁵. These green-striped cities could spread ecosystem benefits throughout more of the city than large, isolated parks, which also tend to occur in wealthier, less diverse neighbourhoods. Designing this infrastructure will need to account for biological and engineering contexts and regulatory constraints, and incorporate local and diverse voices to be effective and fair¹²⁴.

Lastly, cities might be designed to act as refugia for some native species because people buffer the impacts of climate change on their own habitats, such as by creating irrigated landscapes and artificial ponds and planting diverse native vegetation in drying landscapes^{57,129}. So-called reconciliation ecology seeks to design habitats that benefit both humans and native wildlife¹³⁰.

Conclusions

Climate change and urbanization interact through their socio-economic drivers, impacts on environmental conditions and effects on ecology and evolution. Organisms mediate the effects of these impacts through demographic, plastic and evolutionary responses. Many responses interact in ways that minimize the summed impacts of climate change and urbanization. This compensatory effect might originate from recent or long-term adaptations to environmental heterogeneity and multiple disturbances, which extend resilience from one driver to another. We propose five hypotheses about possible interactive effects and suggest how they can be tested through long-term observations and experiments. As climate change and urbanization increasingly dominate the world, society must consider their joint impacts to mitigate their interactive effects on biodiversity, ecosystems and people.

References

1. IPCC *Climate Change 2013: The Physical Science Basis* (eds Stocker, T. F. et al.) (Cambridge Univ. Press, 2013).
2. *World Urbanization Prospects: The 2018 Revision* (United Nations, 2018).
3. Moreno-Monroy, A. I., Schiavina, M. & Veneri, P. Metropolitan areas in the world: delineation and population trends. *J. Urban Econ.* **125**, 103242 (2021).
4. Elmqvist, T. et al. *Urbanization, Biodiversity and Ecosystem Services: Challenges and Opportunities: A Global Assessment* (Springer Nature, 2013).
5. Szulkin, M., Munshi-South, J. & Charmantier, A. *Urban Evolutionary Biology* (Oxford Univ. Press, 2020).
6. Patz, J. A., Campbell-Lendrum, D., Holloway, T. & Foley, J. A. Impact of regional climate change on human health. *Nature* **438**, 310–317 (2005).
7. Grimm, N. B. et al. Global change and the ecology of cities. *Science* **319**, 756–760 (2008).
8. Scheffers, B. R. et al. The broad footprint of climate change from genes to biomes to people. *Science* **354**, aaf7671 (2016).
9. Des Roches, S. et al. Socio-eco-evolutionary dynamics in cities. *Evol. Appl.* **14**, 248–267 (2021).
This paper defines the socio-eco-evolutionary dynamics that need to be understood in cities; this concept provides the underlying basis for this Perspective.
10. Urban, M. C. Accelerating extinction risk from climate change. *Science* **348**, 571–573 (2015).
11. Merilä, J. & Hendry, A. P. Climate change, adaptation, and phenotypic plasticity: the problem and the evidence. *Evol. Appl.* **7**, 1–14 (2014).
12. Geerts, A. et al. Rapid evolution of thermal tolerance in the water flea *Daphnia*. *Nat. Clim. Change* **5**, 665–668 (2015).
13. Franks, S. J., Sim, S. & Weis, A. E. Rapid evolution of flowering time by an annual plant in response to a climate fluctuation. *Proc. Natl Acad. Sci. USA* **104**, 1278–1282 (2007).
14. Donihue, C. M. et al. Hurricane effects on Neotropical lizards span geographic and phylogenetic scales. *Proc. Natl Acad. Sci. USA* **117**, 10429–10434 (2020).
15. Bitter, M. C., Kapsenberg, L., Gattuso, J. P. & Pfister, C. A. Standing genetic variation fuels rapid adaptation to ocean acidification. *Nat. Commun.* **10**, 5821 (2019).
16. Alberti, M. et al. The complexity of urban eco-evolutionary dynamics. *Bioscience* **70**, 772–793 (2020).
17. Johnson, M. T. & Munshi-South, J. Evolution of life in urban environments. *Science* **358**, eaam8327 (2017).
18. Sidemo-Holm, W., Ekroos, J., Reina Garcia, S., Söderström, B. & Hedblom, M. Urbanization causes biotic homogenization of woodland bird communities at multiple spatial scales. *Glob. Change Biol.* **28**, 6152–6164 (2022).
19. McKinney, M. L. Urbanization as a major cause of biotic homogenization. *Biol. Conserv.* **127**, 247–260 (2006).
20. McDonald, R. I. et al. Research gaps in knowledge of the impact of urban growth on biodiversity. *Nat. Sustain.* **3**, 16–24 (2020).
21. van Vliet, J. Direct and indirect loss of natural area from urban expansion. *Nat. Sustain.* **2**, 755–763 (2019).
22. Piano, E. et al. Urbanization drives cross-taxon declines in abundance and diversity at multiple spatial scales. *Glob. Change Biol.* **26**, 1196–1211 (2020).
23. Hendry, A. P. *Eco-evolutionary Dynamics* (Princeton Univ. Press, 2016).
24. Chapman, S., Watson, J. E., Salazar, A., Thatcher, M. & McAlpine, C. A. The impact of urbanization and climate change on urban temperatures: a systematic review. *Landsc. Ecol.* **32**, 1921–1935 (2017).
25. Nelson, K. C. et al. Forecasting the combined effects of urbanization and climate change on stream ecosystems: from impacts to management options. *J. Appl. Ecol.* **46**, 154–163 (2009).
26. Spotswood, E. N. et al. The biological deserts fallacy: cities in their landscapes contribute more than we think to regional biodiversity. *Bioscience* **71**, 148–160 (2021).
27. Verrelli, B. C. et al. A global horizon scan for urban evolutionary ecology. *Trends Ecol. Evol.* **37**, 1006–1019 (2022).
This paper supplies 30 questions at the interface of urbanization and eco-evolution, including the need to consider interactions between urbanization and climate change.
28. Hoffmann, A. A. & Sgro, C. M. Climate change and evolutionary adaptation. *Nature* **470**, 479–485 (2011).
29. Riahi, K. et al. The Shared Socioeconomic Pathways and their energy, land use, and greenhouse gas emissions implications: an overview. *Glob. Environ. Change* **42**, 153–168 (2017).
30. O'Neill, B. C. et al. The Scenario Model Intercomparison Project (ScenarioMIP) for CMIP6. *Geosci. Model Dev.* **9**, 3461–3482 (2016).
31. Schell, C. J. et al. The ecological and evolutionary consequences of systemic racism in urban environments. *Science* **369**, eaay4497 (2020).
This review highlights how structural racism and classism affect the distribution of ecosystem benefits in cities.
32. Niinemets, Ü. et al. Interacting environmental and chemical stresses under global change in temperate aquatic ecosystems: stress responses, adaptation, and scaling. *Reg. Environ. Change* **17**, 2061–2077 (2017).
33. Xu, D., Gao, J., Lin, W. & Zhou, W. Differences in the ecological impact of climate change and urbanization. *Urban Clim.* **38**, 100891 (2021).
34. Liu, J. et al. Framing sustainability in a telecoupled world. *Ecol. Soc.* **18**, 1–19 (2013).
35. Albert, C., Rayfield, B., Dumitru, M. & Gonzalez, A. Applying network theory to prioritize multi-species habitat networks that are robust to climate and land-use change. *Conserv. Biol.* **31**, 1383–1396 (2017).
36. Lian, X. et al. Artificial light pollution inhibits plant phenology advance induced by climate warming. *Environ. Pollut.* **291**, 118110 (2021).
37. Hillier, A. E. Redlining and the Home Owners' Loan Corporation. *J. Urban Hist.* **29**, 394–420 (2003).
38. Urban, M. C. et al. Evolutionary origins for ecological patterns in space. *Proc. Natl Acad. Sci. USA* **117**, 17482–17490 (2020).
39. Varquez, A. C. G. & Kanda, M. Global urban climatology: a meta-analysis of air temperature trends (1960–2009). *NPJ Clim. Atmos. Sci.* **1**, 32 (2018).
40. Peng, S. et al. Surface urban heat island across 419 global big cities. *Environ. Sci. Technol.* **46**, 696–703 (2012).
41. Oleson, K. Contrasts between urban and rural climate in CCSM4 CMIP5 climate change scenarios. *J. Clim.* **25**, 1390–1412 (2012).
42. Chen, A., Yao, X. A., Sun, R. & Chen, L. Effect of urban green patterns on surface urban cool islands and its seasonal variations. *Urban For. Urban Green.* **13**, 646–654 (2014).
43. Zhao, L. et al. Global multi-model projections of local urban climates. *Nat. Clim. Change* **11**, 152–157 (2021).
44. Burlley, H. et al. Substantial declines in urban tree habitat predicted under climate change. *Sci. Total Environ.* **685**, 451–462 (2019).
45. Pretzsch, H. et al. Climate change accelerates growth of urban trees in metropolises worldwide. *Sci. Rep.* **7**, 15403 (2017).

46. Tryjanowski, P., Sparks, T. H., Kuźniak, S., Czechowski, P. & Jerzak, L. Bird migration advances more strongly in urban environments. *PLoS ONE* **8**, e63482 (2013).
47. Meng, L. et al. Urban warming advances spring phenology but reduces the response of phenology to temperature in the conterminous United States. *Proc. Natl Acad. Sci. USA* **117**, 4228–4233 (2020).
- This study evaluates phenological responses in response to both urbanization and climate change and finds a slowing of temperature-driven responses in urban plants that might reduce their capacity to respond to future temperature extremes.**
48. Li, D. et al. Climate, urbanization, and species traits interactively drive flowering duration. *Glob. Change Biol.* **27**, 892–903 (2021).
49. Fisogni, A. et al. Urbanization drives an early spring for plants but not for pollinators. *Oikos* **129**, 1681–1691 (2020).
50. Meineke, E. K., Dunn, R. R. & Frank, S. D. Early pest development and loss of biological control are associated with urban warming. *Biol. Lett.* **10**, 20140586 (2014).
51. Visser, M. E. & Gienapp, P. Evolutionary and demographic consequences of phenological mismatches. *Nat. Ecol. Evol.* **3**, 879–885 (2019).
52. Brans, K. I. et al. The heat is on: genetic adaptation to urbanization mediated by thermal tolerance and body size. *Glob. Change Biol.* **23**, 5218–5227 (2017).
- Example of how urban heat islands can lead to adaptation in aquatic environments.**
53. Winchell, K. M. et al. Genome-wide parallelism underlies contemporary adaptation in urban lizards. *Proc. Natl Acad. Sci. USA* **120**, e2216789120 (2023).
54. Diamond, S. E., Chick, L., Perez, A., Strickler, S. A. & Martin, R. A. Rapid evolution of ant thermal tolerance across an urban–rural temperature cline. *Biol. J. Linn. Soc.* **121**, 248–257 (2017).
55. Iknayan, K. J. & Beissinger, S. R. Collapse of a desert bird community over the past century driven by climate change. *Proc. Natl Acad. Sci. USA* **115**, 8597–8602 (2018).
56. Buyantuyev, A. & Wu, J. Urbanization alters spatiotemporal patterns of ecosystem primary production: a case study of the Phoenix metropolitan region, USA. *J. Arid Environ.* **73**, 512–520 (2009).
57. Roach, W. J. et al. Unintended consequences of urbanization for aquatic ecosystems: a case study from the Arizona desert. *Bioscience* **58**, 715–727 (2008).
58. Siepielski, A. M. et al. Precipitation drives global variation in natural selection. *Science* **355**, 959–962 (2017).
59. Mayrose, M., Kane, N. C., Mayrose, I., Dlugosch, K. M. & Rieseberg, L. H. Increased growth in sunflower correlates with reduced defences and altered gene expression in response to biotic and abiotic stress. *Mol. Ecol.* **20**, 4683–4694 (2011).
60. Elmqvist, T. et al. Benefits of restoring ecosystem services in urban areas. *Curr. Opin. Environ. Sustain.* **14**, 101–108 (2015).
61. Pumo, D., Arnone, E., Francipane, A., Caracciolo, D. & Noto, L. Potential implications of climate change and urbanization on watershed hydrology. *J. Hydrol.* **554**, 80–99 (2017).
62. Zhou, Q., Leng, G., Su, J. & Ren, Y. Comparison of urbanization and climate change impacts on urban flood volumes: importance of urban planning and drainage adaptation. *Sci. Total Environ.* **658**, 24–33 (2019).
63. Liu, J. & Niyogi, D. Meta-analysis of urbanization impact on rainfall modification. *Sci. Rep.* **9**, 7301 (2019).
64. Palmer, T. & Räisänen, J. Quantifying the risk of extreme seasonal precipitation events in a changing climate. *Nature* **415**, 512–514 (2002).
65. McGrane, S. J. Impacts of urbanisation on hydrological and water quality dynamics, and urban water management: a review. *Hydrol. Sci. J.* **61**, 2295–2311 (2016).
66. Des Roches, S., Bell, M. A. & Palkovacs, E. P. Climate-driven habitat change causes evolution in threespine stickleback. *Glob. Change Biol.* **26**, 597–606 (2020).
67. King, R. S., Scoggins, M. & Porras, A. Stream biodiversity is disproportionately lost to urbanization when flow permanence declines: evidence from southwestern North America. *Freshw. Sci.* **35**, 340–352 (2016).
68. Jackson, M. C., Loewen, C. J., Vinebrooke, R. D. & Chimimba, C. T. Net effects of multiple stressors in freshwater ecosystems: a meta-analysis. *Glob. Change Biol.* **22**, 180–189 (2016).
69. Urban, M. C., Zarnetske, P. L. & Skelly, D. K. Moving forward: dispersal and species interactions determine biotic responses to climate change. *Ann. N. Y. Acad. Sci.* **1297**, 44–60 (2013).
70. Nadeau, C. P. & Urban, M. C. Eco-evolution on the edge during climate change. *Ecography* **42**, 1280–1297 (2019).
71. McDonald, R. I., Kareiva, P. & Forman, R. T. The implications of current and future urbanization for global protected areas and biodiversity conservation. *Biol. Conserv.* **141**, 1695–1703 (2008).
72. Benson, J. F. et al. Extinction vortex dynamics of top predators isolated by urbanization. *Ecol. Appl.* **29**, e01868 (2019).
73. McGuire, J. L., Lawler, J. J., McRae, B. H., Nuñez, T. A. & Theobald, D. M. Achieving climate connectivity in a fragmented landscape. *Proc. Natl Acad. Sci. USA* **113**, 7195–7200 (2016).
74. Piano, E. et al. Urbanization drives community shifts towards thermophilic and dispersive species at local and landscape scales. *Glob. Change Biol.* **23**, 2554–2564 (2017).
75. Merckx, T. et al. Body-size shifts in aquatic and terrestrial urban communities. *Nature* **558**, 113–116 (2018).
76. Bullock, J. M. et al. Human-mediated dispersal and the rewiring of spatial networks. *Trends Ecol. Evol.* **33**, 958–970 (2018).
77. Richardson, J. L. et al. Dispersal ability predicts spatial genetic structure in native mammals persisting across an urbanization gradient. *Evol. Appl.* **14**, 163–177 (2021).
78. Miles, L. S., Breitbart, S. T., Wagner, H. H. & Johnson, M. T. Urbanization shapes the ecology and evolution of plant–arthropod herbivore interactions. *Front. Ecol. Evol.* **7**, 310 (2019).
79. Miles, L. S., Rivkin, L. R., Johnson, M. T., Munshi-South, J. & Verrelli, B. C. Gene flow and genetic drift in urban environments. *Mol. Ecol.* **28**, 4138–4151 (2019).
80. Miles, L. S., Johnson, J. C., Dyer, R. J. & Verrelli, B. C. Urbanization as a facilitator of gene flow in a human health pest. *Mol. Ecol.* **27**, 3219–3230 (2018).
- This study demonstrates higher gene flow in urban populations of the black widow spider than in rural areas, suggesting that cities not only limit connectivity but also can sometimes enhance it.**
81. Yakub, M. & Tiffin, P. Living in the city: urban environments shape the evolution of a native annual plant. *Glob. Change Biol.* **23**, 2082–2089 (2017).
82. Cheptou, P.-O., Carrue, O., Rouifed, S. & Cantarel, A. Rapid evolution of seed dispersal in an urban environment in the weed *Crepis sancta*. *Proc. Natl Acad. Sci. USA* **105**, 3796–3799 (2008).
83. Tüzün, N., Op de Beeck, L. & Stoks, R. Sexual selection reinforces a higher flight endurance in urban damselflies. *Evol. Appl.* **10**, 694–703 (2017).
84. Henry, R. C., Bocedi, G. & Travis, J. M. J. Eco-evolutionary dynamics of range shifts: elastic margins and critical thresholds. *J. Theor. Biol.* **321**, 1–7 (2013).
85. Waajen, G. W. A. M., Faassen, E. J. & Lüring, M. Eutrophic urban ponds suffer from cyanobacterial blooms: Dutch examples. *Environ. Sci. Pollut. Res.* **21**, 9983–9994 (2014).
86. Jeppesen, E. et al. Climate change effects on runoff, catchment phosphorus loading and lake ecological state, and potential adaptations. *J. Environ. Qual.* **38**, 1930–1941 (2009).

87. Kosten, S. et al. Warmer climates boost cyanobacterial dominance in shallow lakes. *Glob. Change Biol.* **18**, 118–126 (2012).
88. Reid, A. J. et al. Emerging threats and persistent conservation challenges for freshwater biodiversity. *Biol. Rev.* **94**, 849–873 (2019).
89. Chislock, M. F., Sarnelle, O., Olsen, B. K., Doster, E. & Wilson, A. E. Large effects of consumer offense on ecosystem structure and function. *Ecology* **94**, 2375–2380 (2013).
90. Jiang, X., Liang, H., Chen, Y., Xu, X. & Huang, D. Microgeographic adaptation to toxic cyanobacteria in two aquatic grazers. *Limnol. Oceanogr.* **60**, 947–956 (2015).
91. Spear, J. E., Grijalva, E. K., Michaels, J. S. & Parker, S. S. Ecological spillover dynamics of organisms from urban to natural landscapes. *J. Urban Ecol.* **4**, July 008 (2018).
92. Borden, J. B. & Flory, S. L. Urban evolution of invasive species. *Front. Ecol. Environ.* **19**, 184–191 (2021).
93. Menke, S. B. et al. Urban areas may serve as habitat and corridors for dry-adapted, heat tolerant species: an example from ants. *Urban Ecosyst.* **14**, 135–163 (2011).
94. Van der Veken, S., Hermy, M., Vellend, M., Knapen, A. & Verheyen, K. Garden plants get a head start on climate change. *Front. Ecol. Environ.* **6**, 212–216 (2008).
95. Martin, R. A., Chick, L. D., Yilmaz, A. R. & Diamond, S. E. Evolution, not transgenerational plasticity, explains the adaptive divergence of acorn ant thermal tolerance across an urban–rural temperature cline. *Evol. Appl.* **12**, 1678–1687 (2019).
96. Campbell-Staton, S. C. et al. Parallel selection on thermal physiology facilitates repeated adaptation of city lizards to urban heat islands. *Nat. Ecol. Evol.* **4**, 652–658 (2020).
97. Carlson, S. M., Cunningham, C. J. & Westley, P. A. H. Evolutionary rescue in a changing world. *Trends Ecol. Evol.* **29**, 521–530 (2014).
98. Altermatt, F., Pajunen, V. I. & Ebert, D. Climate change affects colonization dynamics in a metacommunity of three *Daphnia* species. *Glob. Change Biol.* **14**, 1209–1220 (2008).
99. De Meester, L., Vanoverbeke, J., Kilsdonk, L. J. & Urban, M. C. Evolving perspectives on monopolization and priority effects. *Trends Ecol. Evol.* **31**, 136–146 (2016).
100. Hellmann, J. J., Byers, J. E., Bierwagen, B. G. & Dukes, J. S. Five potential consequences of climate change for invasive species. *Conserv. Biol.* **22**, 534–543 (2008).
101. Jansen, M., Stoks, R., Coors, A., Van Doorslaer, W. & De Meester, L. Collateral damage: rapid exposure-induced evolution of pesticide resistance leads to increased susceptibility to parasites. *Evolution* **65**, 2681–2691 (2011).
102. Padayachee, A. L. et al. How do invasive species travel to and through urban environments? *Biol. Invasions* **19**, 3557–3570 (2017).
103. Wilson, C. J. & Jamieson, M. A. The effects of urbanization on bee communities depends on floral resource availability and bee functional traits. *PLoS ONE* **14**, e0225852 (2019).
104. Theodorou, P. et al. Genome-wide single nucleotide polymorphism scan suggests adaptation to urbanization in an important pollinator, the red-tailed bumblebee (*Bombus lapidarius* L.). *Proc. R. Soc. B* **285**, 20172806 (2018).
105. Wilke, A. B., Beier, J. C. & Benelli, G. Complexity of the relationship between global warming and urbanization—an obscure future for predicting increases in vector-borne infectious diseases. *Curr. Opin. Insect Sci.* **35**, 1–9 (2019).
106. Nadeau, C. P., Farkas, T. E., Makkay, A. M., Papke, R. T. & Urban, M. C. Adaptation reduces competitive dominance and alters community assembly. *Proc. R. Soc. B* **288**, 20203133 (2021).
107. Gillespie, R. Community assembly through adaptive radiation in Hawaiian spiders. *Science* **303**, 356–359 (2004).
108. Colwell, R. K., Brehm, G., Cardelus, C. L., Gilman, A. C. & Longino, J. T. Global warming, elevational range shifts, and lowland biotic attrition in the wet tropics. *Science* **322**, 258–261 (2008).
109. Norberg, J., Urban, M. C., Vellend, M., Klausmeier, C. A. & Loeuille, N. Eco-evolutionary responses of biodiversity to climate change. *Nat. Clim. Change* **2**, 747–751 (2012).
110. Qiu, T., Song, C., Zhang, Y., Liu, H. & Vose, J. M. Urbanization and climate change jointly shift land surface phenology in the northern mid-latitude large cities. *Remote Sens. Environ.* **236**, 111477 (2020).
111. Zhou, Y. Understanding urban plant phenology for sustainable cities and planet. *Nat. Clim. Change* **12**, 302–304 (2022).
112. Egert-Berg, K. et al. Fruit bats adjust their foraging strategies to urban environments to diversify their diet. *BMC Biol.* **19**, 123 (2021).
113. Zaninotto, V. et al. Broader phenology of pollinator activity and higher plant reproductive success in an urban habitat compared to a rural one. *Ecol. Evol.* **10**, 11607–11621 (2020).
114. Rivkin, L. R., Nhan, V. J., Weis, A. E. & Johnson, M. T. Variation in pollinator-mediated plant reproduction across an urbanization gradient. *Oecologia* **192**, 1073–1083 (2020).
115. Memmott, J., Craze, P. G., Waser, N. M. & Price, M. V. Global warming and the disruption of plant–pollinator interactions. *Ecol. Lett.* **10**, 710–717 (2007).
116. Gorton, A. J., Moeller, D. A. & Tiffin, P. Little plant, big city: a test of adaptation to urban environments in common ragweed (*Ambrosia artemisiifolia*). *Proc. R. Soc. B* **285**, 20180968 (2018).
117. Synes, N. W. et al. Coupled land use and ecological models reveal emergence and feedbacks in socio-ecological systems. *Ecography* **42**, 814–825 (2019).
118. McDonnell, M. J. & Pickett, S. T. Ecosystem structure and function along urban-rural gradients: an unexploited opportunity for ecology. *Ecology* **71**, 1232–1237 (1990).
119. Winchell, K. M. et al. Moving past the challenges and misconceptions in urban adaptation research. *Ecol. Evol.* **12**, e9552 (2022).
120. Lahr, E. C., Dunn, R. R. & Frank, S. D. Getting ahead of the curve: cities as surrogates for global change. *Proc. R. Soc. B* **285**, 20180643 (2018).
121. Youngsteadt, E., Dale, A. G., Terando, A. J., Dunn, R. R. & Frank, S. D. Do cities simulate climate change? A comparison of herbivore response to urban and global warming. *Glob. Change Biol.* **21**, 97–105 (2015).
- This empirical study demonstrates that a scale insect responds similarly to temperature increases in cities and rural areas, suggesting the ability to use urban systems to learn about climate change responses.**
122. Sharkey, P. *Stuck in Place: Urban Neighborhoods and the End of Progress toward Racial Equality* (Univ. Chicago Press, 2013).
123. Pinna, F., Garau, C. & Annunziata, A. A Literature review on urban usability and accessibility to investigate the related criteria for equality in the city. In *International Conference on Computational Science and Its Applications* (eds Gervasi, O. et al.) 525–541 (Springer, 2021).
124. Hobbie, S. E. & Grimm, N. B. Nature-based approaches to managing climate change impacts in cities. *Phil. Trans. R. Soc. B* **375**, 20190124 (2020).
- This perspective calls for using living organisms and ecosystem features to lessen climate change impacts in urban areas.**
125. Goddard, M. A. et al. A global horizon scan of the future impacts of robotics and autonomous systems on urban ecosystems. *Nat. Ecol. Evol.* **5**, 219–230 (2021).
126. Andersson, E., Borgström, S. & McPhearson, T. in *Nature-Based Solutions to Climate Change Adaptation in Urban Areas: Theory and Practice of Urban Sustainability Transitions* (eds Kabisch, N. et al.) 51–64 (Springer, 2017).

127. Depietri, Y. & McPhearson, T. in *Nature-Based Solutions to Climate Change Adaptation in Urban Areas: Theory and Practice of Urban Sustainability Transitions* (eds Kabisch, N. et al.) 91–109 (Springer, 2017).
128. Lambert, M. R. & Donihue, C. M. Urban biodiversity management using evolutionary tools. *Nat. Ecol. Evol.* **4**, 903–910 (2020).
129. Hostetler, N. E. & McIntyre, M. E. Effects of urban land use on pollinator (Hymenoptera: Apoidea) communities in a desert metropolis. *Basic Appl. Ecol.* **2**, 209–218 (2001).
130. Rosenzweig, M. L. Reconciliation ecology and the future of species diversity. *Oryx* **37**, 194–205 (2003).
131. Iturbide, M. et al. Implementation of FAIR principles in the IPCC: the WGI AR6 Atlas repository. *Sci. Data* **9**, 629 (2022).
132. *Star Cloud Data Service Platform* (Peng Cheng Laboratory, 2024); <http://data.starcloud.pcl.ac.cn/>
133. Zhang, T., Zhou, Y., Zhu, Z., Li, X. & Asrar, G. A *Global Seamless 1 km Resolution Daily Land Surface Temperature Dataset (2003–2020)* (Iowa State Univ., 2021); <https://doi.org/10.25380/iastate.c.5078492.v3>

Acknowledgements

This study is a collaborative effort of the National Science Foundation Research Coordination Network: Eco-Evolutionary Dynamics in an Urban Planet: Underlying Mechanisms and Ecosystem Feedbacks (DEB 1840663). We acknowledge the many participants in this working group that directly and indirectly contributed to our development of the five presented hypotheses. M.C.U. was supported by NSF award no. DEB-1119877, National Science Foundation NRT grant no. 2022036, NASA awards no. 8ONSSC22K0883 and no. 8ONSSC19K0476, the Arden Chair in Ecology and Evolutionary Biology, and a Leverhulme visiting professorship. P.R. thanks the Max Planck Society for funding.

Author contributions

M.C.U., M.A., L.D.M. and K.I.B. conceived of the overall idea. All authors wrote the paper. Y.Z. provided data used in the heat island calculations. A.N.M. developed Fig. 1. M.A. led the research coordination network that brought these authors together.

Competing interests

The authors declare no competing interests.

Additional information

Supplementary information The online version contains supplementary material available at <https://doi.org/10.1038/s41558-024-01996-2>.

Correspondence should be addressed to Mark C. Urban.

Peer review information *Nature Climate Change* thanks Jie Liang, Robert McDonald and the other, anonymous, reviewer(s) for their contribution to the peer review of this work.

Reprints and permissions information is available at www.nature.com/reprints.

Publisher's note Springer Nature remains neutral with regard to jurisdictional claims in published maps and institutional affiliations.

Springer Nature or its licensor (e.g. a society or other partner) holds exclusive rights to this article under a publishing agreement with the author(s) or other rightsholder(s); author self-archiving of the accepted manuscript version of this article is solely governed by the terms of such publishing agreement and applicable law.

© Springer Nature Limited 2024