



**HAL**  
open science

## **Capturing dense shelf water cascading with a high-resolution ocean reanalysis**

Helena Fos, Jesús Peña-Izquierdo, David Amblas, Marta Arjona-Camas, Laia Romero, Víctor Estella-Pérez, Cristian Florindo-López, Antoni Calafat, Marc Cerdà-Domènech, Pere Puig, et al.

### ► **To cite this version:**

Helena Fos, Jesús Peña-Izquierdo, David Amblas, Marta Arjona-Camas, Laia Romero, et al.. Capturing dense shelf water cascading with a high-resolution ocean reanalysis. *Ocean Science*, 2025, 21 (5), pp.2169-2178. <10.5194/os-21-2169-2025>. <hal-05347049>

**HAL Id: hal-05347049**

**<https://cnrs.hal.science/hal-05347049v1>**

Submitted on 6 Nov 2025

**HAL** is a multi-disciplinary open access archive for the deposit and dissemination of scientific research documents, whether they are published or not. The documents may come from teaching and research institutions in France or abroad, or from public or private research centers.

L'archive ouverte pluridisciplinaire **HAL**, est destinée au dépôt et à la diffusion de documents scientifiques de niveau recherche, publiés ou non, émanant des établissements d'enseignement et de recherche français ou étrangers, des laboratoires publics ou privés.



Distributed under a Creative Commons CC BY 4.0 - Attribution - International License



# Capturing dense shelf water cascading with a high-resolution ocean reanalysis

Helena Fos<sup>1</sup>, Jesús Peña-Izquierdo<sup>2</sup>, David Amblas<sup>1</sup>, Marta Arjona-Camas<sup>1,3</sup>, Laia Romero<sup>2</sup>, Víctor Estella-Pérez<sup>2</sup>, Cristian Florindo-Lopez<sup>2</sup>, Antoni Calafat<sup>1</sup>, Marc Cerdà-Domènech<sup>1</sup>, Pere Puig<sup>4</sup>, Xavier Durrieu de Madron<sup>3</sup>, and Anna Sanchez-Vidal<sup>1</sup>

<sup>1</sup>Departament de Dinàmica de la Terra i de l'Oceà, GRC Geociències Marines, Universitat de Barcelona, Barcelona, Spain

<sup>2</sup>Lobelia Earth SL, Barcelona, Spain

<sup>3</sup>CEFREM, UMR-5110 CNRS-Université de Perpignan Via Domitia, Perpignan, France

<sup>4</sup>Institut de Ciències del Mar, CSIC, Barcelona, Spain

**Correspondence:** Helena Fos (hfos@ub.edu)

Received: 20 March 2025 – Discussion started: 31 March 2025

Revised: 27 June 2025 – Accepted: 12 July 2025 – Published: 2 October 2025

**Abstract.** Dense shelf water cascading (DSWC) is an oceanographic process that occurs when dense shelf water overflows over the shelf edge downslope toward the deep sea. Monitored in the northwestern Mediterranean by moorings since 1993 in the Lacaze-Duthiers Canyon and since 2005 in the Cap de Creus Canyon, numerical modeling with reanalysis extends this timeline further into the past. This study investigates a regional reanalysis (1987–2021) validated against mooring observations at 750–1000 m depth. The reanalysis successfully reproduces observed intense DSWC (IDSWC) events from 1999, 2000, 2005, 2006, 2012, 2013, and 2018 while identifying one previously unreported event in 1987 and detecting no IDSWC between 1988 and 1998. The reanalysis effectively matches 84 % of observed IDSWC days within the same week and 56 % on the exact date. Instead of assimilating IDSWC events from mooring observations to resolve the cascading process, the model relies solely on the seawater density on the shelf and revealed the seawater properties along the canyon that caused IDSWC. This work highlights the importance of high-resolution reanalyses in investigating the impacts of mesoscale processes on larger scales in the deep ocean.

## 1 Introduction

Dense shelf water cascading (DSWC) is a localized oceanographic phenomenon in selected regions worldwide, characterized by the spilling and sinking of shelf water due to its increased density caused by cooling, evaporation, or freezing (Ivanov et al., 2004). Since these overflows are driven by air–sea interactions, sensitive to climate change, in situ monitoring programs are key in detecting alterations impacting deep-water ventilation and threatening related deep-sea ecosystems. The broad shelf of the Gulf of Lion (GoL) in the northwestern Mediterranean Sea (Fig. 1a) is a well-known site for dense coastal-water formation during cold winters, caused by heat loss in surface water through the blowing of the dry and cold northerly winds, namely Tramuntana and Mistral (Millot, 1990). This dense shelf water flows cyclonically southward to the Cap de Creus peninsula. Then, it is forced to turn; overflow over the shelf edge; and sink down-canyon if dense enough, channelized through submarine canyons: mainly the Cap de Creus Canyon (CCC) and the Lacaze-Duthiers Canyon (LDC) (Dufau-Julliand et al., 2004; Ulses et al., 2008a). The intensity of these cascades varies annually, and, hence, the maximum depth reached is from a few hundred meters (Arjona-Camas et al., 2025) to over 2000 m (Durrieu de Madron et al., 2023). During intense DSWC (IDSWC) events, the shelf water potential density ( $\rho_\theta$ ;  $\sigma_\theta = \rho_\theta - 1000 \text{ kg m}^{-3}$ ) exceeds that of the Eastern Intermediate Water (EIW; Schroeder et al., 2024) ( $\sigma_\theta$ : 29.05–

$29.10 \text{ kg m}^{-3}$ ) found between 300 and 800 m depth, which, in previous studies, was referred to as Levantine Intermediate Water (LIW), and even that of the Western Mediterranean Deep Water (WMDW; MEDOC Group, 1970) ( $\sigma_\theta \sim 29.10\text{--}29.16 \text{ kg m}^{-3}$ ) found deeper, enabling the cascading to the bottom of the basin floor, over 2400 m depth. IDSWC in the GoL was observed in 1999, 2005, 2006, 2012, and 2013 with mooring lines (Béthoux et al., 2002; Canals et al., 2006; Durrieu De Madron et al., 2013; Heussner et al., 2006; Palanques et al., 2006), hydrographic profiles (Puig et al., 2013), and gliders (Durrieu De Madron et al., 2013; Testor et al., 2018). Although these observations enable the study of specific DSWC characteristics, a broader climatological perspective is needed, especially as climate projections under the IPCC A2 scenario predict a 50 %–90 % decline in DSWC in the GoL by the end of the century (Herrmann et al., 2008).

This work aims to study, for the first time, the climatology of IDSWC using multidecadal observations together with an ocean reanalysis, which combines model simulations of past hydrography and dynamics with observational data assimilation. Since IDSWC observations are sparse and not assimilated by the reanalysis, they can be used to validate the underlying model resolving IDSWC. This approach provides decades of continuous daily data, revealing IDSWC in pre-observational years. Reproducing IDSWC is challenging because reanalysis products typically exhibit reduced vertical resolution in the deep sea, hindering the reproduction of seafloor morphology and dynamics of submarine canyons where IDSWC occurs. This study is focused on the modeling of the CCC and LDC hydrodynamics during IDSWC, holding about 2 decades of in situ observational data.

## 2 Data and methods

This study uses the Mediterranean Sea Physics Reanalysis (hereafter MedSea) (Escudier et al., 2020, 2021) provided by the EU Copernicus Marine Environment Monitoring Service (CMEMS). This product is generated by a hydrodynamical model based on the Nucleus for European Modelling of the Ocean (NEMO) version 3.6 (Madec et al., 2016) and is corrected by variational ocean data assimilation of in situ salinity and temperature observations and sea level anomalies from satellite observations. Based on the CORA dataset (Szekely et al., 2024) and the SeaDataNet (<https://www.seadatanet.org/>, last access: 21 June 2024) observational database, from which this reanalysis assimilates salinity and temperature, the reanalysis does not assimilate any IDSWC observations. The model is initialized with climatological values from the C-GLORSv5 global ocean reanalysis (Storto and Masina, 2016). Boundary conditions are provided by the ERA5 reanalysis in the atmosphere (Hersbach et al., 2020), by the C-GLORSv5 in the Atlantic, and by monthly mean climatological datasets for river runoff (more details in Escudier et al., 2021). The model bathymetry is started by the

GEBCO 30 arcsec grid (Weatherall et al., 2015). Due to the high horizontal resolution of  $1/24^\circ$  ( $\sim 4 \text{ km}$ ), the reanalysis enables the representation of submarine canyons and inner-shelf waters, with 141 vertical levels from 2 m width at the surface to 35 m at 1000 m depth. It provides daily averages from 1987, and this study focuses on the 1987–2021 period.

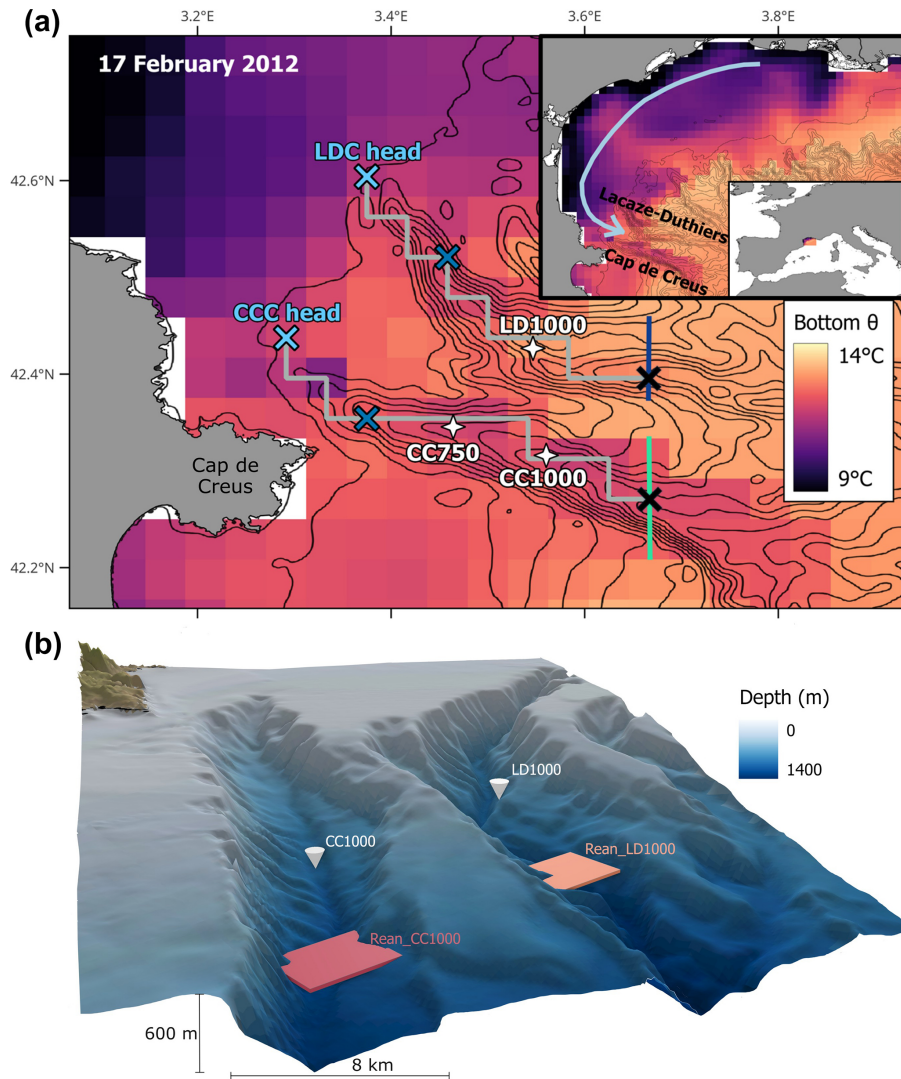
To validate the reanalysis results, we used in situ observations from current meters, with temperature and current speed sensors moored 30–20 m above the seabed, at 750 and 1000 m depth in the CCC, and at 1000 m in the LDC (hereafter CC750, CC1000, and LD1000; Fig. 1). The observations covered 1993–2021 for LD1000, winter 2006 and 2011–2021 for CC1000, and winter 2005 for CC750. More details are shown in Table 1.

The bottom canyon locations at 1000 m depth in reanalysis data are 10 km downstream of the moorings because the model resolution cannot resolve the sharp canyon incisions where the moorings were deployed (Fig. 1b). However, these different locations were chosen to capture the strongest DSWC events with signatures beyond the EIW layer. There, cascading shelf water was detected and defined with daily mean potential temperature ( $\theta$ )  $\leq 12.6^\circ\text{C}$  (after detrending) and speed  $\geq 0.1 \text{ m s}^{-1}$  for reanalysis and observations. For reanalysis-derived IDSWC transport through the sections in Fig. 1a, additionally, salinity ( $S$ ) values of  $\leq 38.44$  (fresher than WMDW) and  $\sigma_\theta \geq 29.05 \text{ kg m}^{-3}$  (denser than EIW) were chosen as dense shelf water characteristics.

## 3 Results

The interannual variability of IDSWC in the LDC and CCC is shown in Fig. 2, presenting the full time series of reanalysis and observational data at 750–1000 m depth. High-speed values associated with drops in temperature during the winters of 1987, 1999, 2000, 2005, 2006, 2012, 2013, and 2018 indicate the cascading of cold dense shelf water (Fig. 2a–d). Notably, no IDSWC events are found from 1988 to 1998. Overall, the reanalysis identifies the same IDSWC years as the observations and additionally captures an event in 1987. Note that, in 2019, CC1000 observations showed a 1 d long anomaly, which is not considered to be an overflow for this analysis.

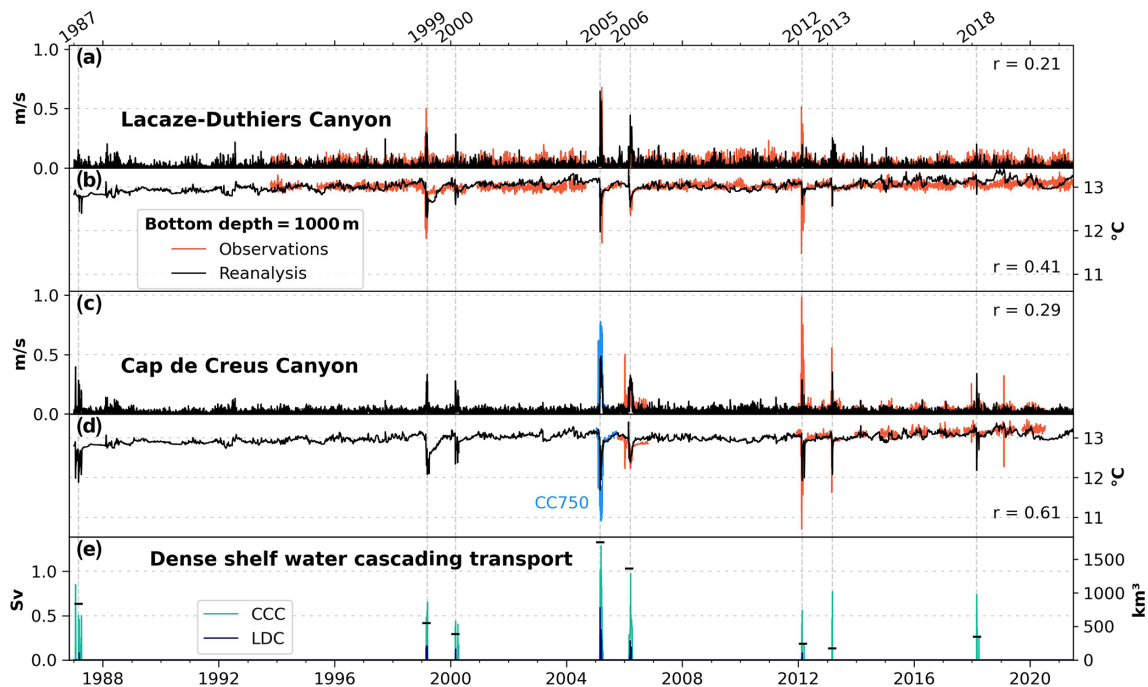
IDSWC events occur simultaneously in both canyons, with more intense and faster transport of colder shelf water in the CCC, as indicated by both the reanalysis and observations (Fig. 2a–d). Furthermore, the observed potential temperatures of both canyons are strongly correlated ( $r = 0.78$ ). Events tend to occur in paired years, as inferred from Durrieu de Madron et al. (2023), where the second year is weaker and usually hardly detectable in the LDC. The observations reveal a significant negative correlation between potential temperature and speed in CC1000 ( $r = -0.63$ ), which is weaker for the reanalysis ( $r = -0.40$ ). Moreover, the reanalysis correlates better with the observations for potential temperature



**Figure 1.** (a) Map with the mooring locations (white crosses) and near-bottom temperature from the MedSea reanalysis on 17 February 2012 (see Movie S1 and S2 in the Supplement). Blue and turquoise N–S-oriented lines indicate the cross-sections used for IDSWC transport calculations. Gray lines indicate the canyon axes following the reanalysis bathymetry, with crosses at 100 (light blue), 400 (dark blue), and 1000 m (black) bottom depth. (b) Scheme of the canyons with real bathymetry at 200 m resolution from EMODnet (<https://emodnet.ec.europa.eu/>, last access: 4 October 2024) showing the mooring observation sites (white cones) and reanalysis data grid points (colored boxes), comparing the resolution of the reanalysis with the width of the canyons. For clarity, the vertical axis is exaggerated by a factor of 5.

**Table 1.** Information about the datasets used in this study.

	Reanalysis	In situ observations (moorings)		
Abbreviation	MedSea	LD1000	CC1000	CC750
Zone (canyons)	Lacaze-Duthiers and Cap de Creus	Lacaze-Duthiers	Cap de Creus	Cap de Creus
Period	1987–2021	1993–2021	2006; 2011–2021	2005
Temporal resolution	Daily averages	60 min	30, 20 and 15 min	20 min
Depth	Surface to bottom	1000 m	1000 m	750 m
Distance from seafloor	–	20–30 m	20–30 m	20–30 m
Variables	Speed, $\theta$ , $S$ , ( $\sigma_\theta$ from $S$ and $\theta$ )	Speed, $\theta$	Speed, $\theta$	Speed, $\theta$



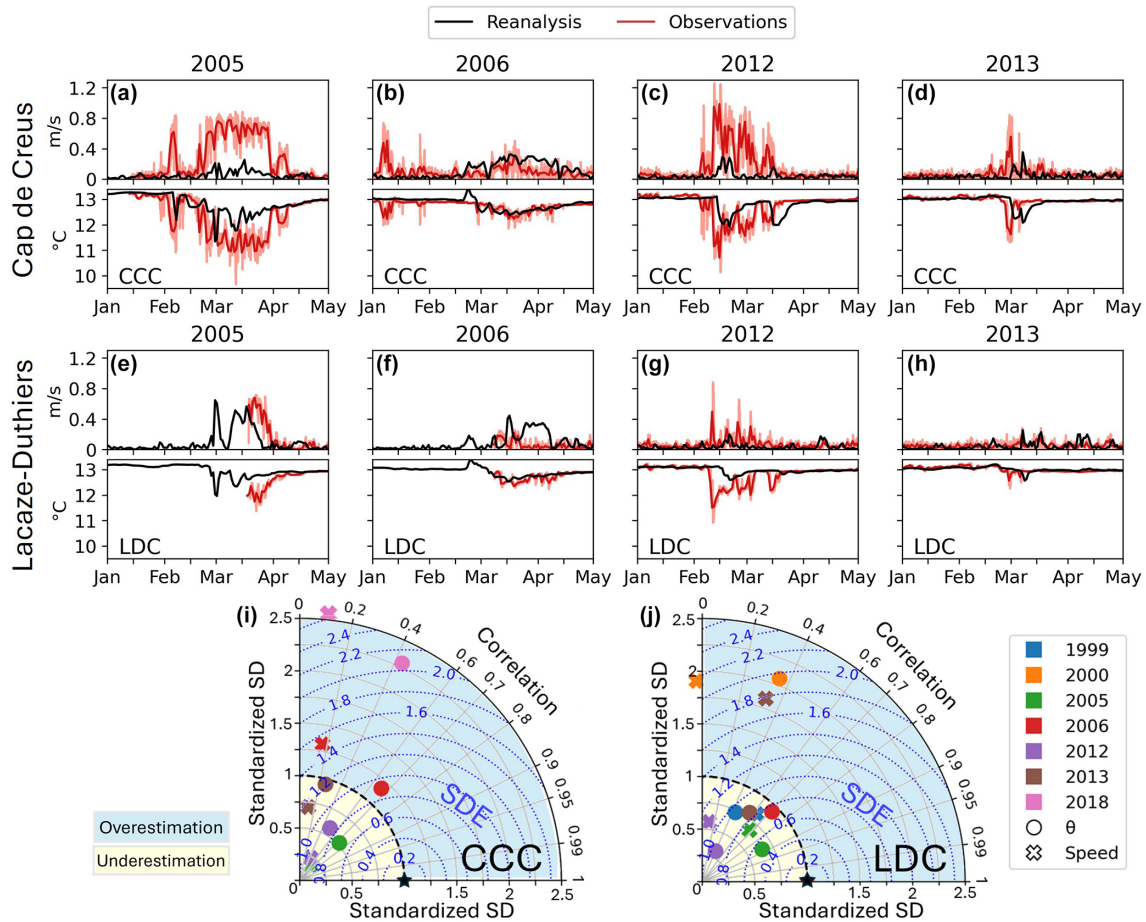
**Figure 2.** Daily mean (1987–2021) bottom current speed (a, c), and potential temperature (b, d) at 1000 m depth in the Lacaze-Duthiers Canyon (LDC; a and b) and Cap de Creus Canyon (CCC; c and d). The 750 m depth observations (CC750) are shown in blue. Vertical dashed gray lines indicate the dates of annual potential temperature minima at the CCC, indicating intense dense shelf water cascading (IDSWC) events, defined with  $\theta \leq 12.6^\circ\text{C}$  (after detrending) and speed of  $\geq 0.1\text{ m s}^{-1}$ . In 2019, the observed anomaly in panels (c) and (d) lasted just 1 d; due to its short duration, it is not considered to be an IDSWC event in this study. Pearson correlation coefficients ( $r$ ) between observations and reanalysis data are shown. (e) Daily mean IDSWC transport (Sv;  $1\text{ Sv} = 10^6\text{ m}^3\text{ s}^{-1}$ ) at 1000 m for both canyons (CCC in turquoise, LDC in blue) is from reanalysis data, computed for water with salinity of  $\leq 38.44$  and  $\sigma_\theta \geq 29.05\text{ kg m}^{-3}$ . The total winter transport volume ( $\text{km}^3$ ) across both canyons is shown with black hyphen-shaped markers. The acronyms IDSWC, LDC, and CCC are used throughout the figures.

( $r = 0.41$  in the LDC and  $r = 0.61$  in the CCC) than for velocity ( $r = 0.21$  in the LDC and  $r = 0.29$  for the CCC), all significant at the 95 % confidence level. A detailed examination of cascading events is shown in Fig. 3.

Winters where the reanalysis standard deviations (SDs) exceed the observation SDs (Fig. 3i and j) indicate an overestimation of the IDSWC and vice versa. The higher the correlation, the better the timing agreement in terms of IDSWC. Considering these two factors, the standardized SD error (SDE) (Wadoux et al., 2022) quantifies the discrepancy between the reanalysis and the observed IDSWC. In 2005 and 2012, when the two strongest IDSWC events occurred, the cascading lasted from late January–February to late May–April, with measured instantaneous speeds exceeding  $0.8$  and  $1.2\text{ m s}^{-1}$ , respectively. In these 2 years, the reanalysis detects temperature and velocity anomalies with high temporal correlation to observations but underestimates their intensities (standardized  $\text{SD} \ll 1$ ). IDSWC replicas in 2006 and 2013 are also well reproduced with regard to time and intensity, particularly for the CCC, with slightly lower accuracy for the LDC (Fig. 3). These prominent DSWC events of 1999, 2005, 2006, 2012, and 2013 are the best reproduced

(SDE:  $0.7$ – $1.5$ ). However, in 2018, the reanalysis overestimates the duration of IDSWC (Fig. 3i) since the observations show only a short sub-daily anomaly, preceded by another short event in December (Fig. 2). Overall, the reanalysis IDSWC flow is  $0.13 \pm 0.05^\circ\text{C}$  warmer and 30 % weaker than the observations in the CCC and  $0.37 \pm 0.15^\circ\text{C}$  warmer but 6 % stronger in the LDC.

Using the IDSWC definition criterion from Sect. 2, between 2005 and 2020, 112 IDSWC days were observed at CC750 and CC1000, while the reanalysis identified 97 d (13 % fewer). At LD1000, between 1993 and 2021, 50 IDSWC days were observed compared to 39 in the reanalysis (22 % fewer). The reanalysis performed better in the CCC (63 % precision, 54 % recall) than in the LDC (38 % precision, 30 % recall), meaning that over 60 % and almost 40 % of the simulated IDSWC days at the CCC and LDC, respectively, could have actually occurred (precision =  $\text{well\_predicted}/\text{total\_predicted}$ ; recall =  $\text{well\_predicted}/\text{observed}$ ). Allowing a 7 d margin to stay in the same synoptic conditions improves the results: 78 % of observed days with IDSWC are reproduced by the reanalysis in the CCC (84 % in the LDC).



**Figure 3.** (a–h) Comparison of daily IDSWC between observations and reanalysis. Sub-hourly measurements (light red) and their daily mean (bright red). The 2005 data correspond to mooring CC750 and the reanalysis at 750 m in the CCC. (i, j) Taylor diagrams for data from panels (a–h) and other IDSWC events, where the reanalysis standard deviations (SDs) are standardized to the SD of the observations (black star), and the standardized SD error (SDE) is obtained. All of the correlations are significant ( $p < 0.05$ ) except for the speed in 2000 and 2012 in the LDC and in 2006, 2013, and 2018 in the CCC. Values for 2018 are not shown in panel (j) because the IDSWC event was not found in the LDC.

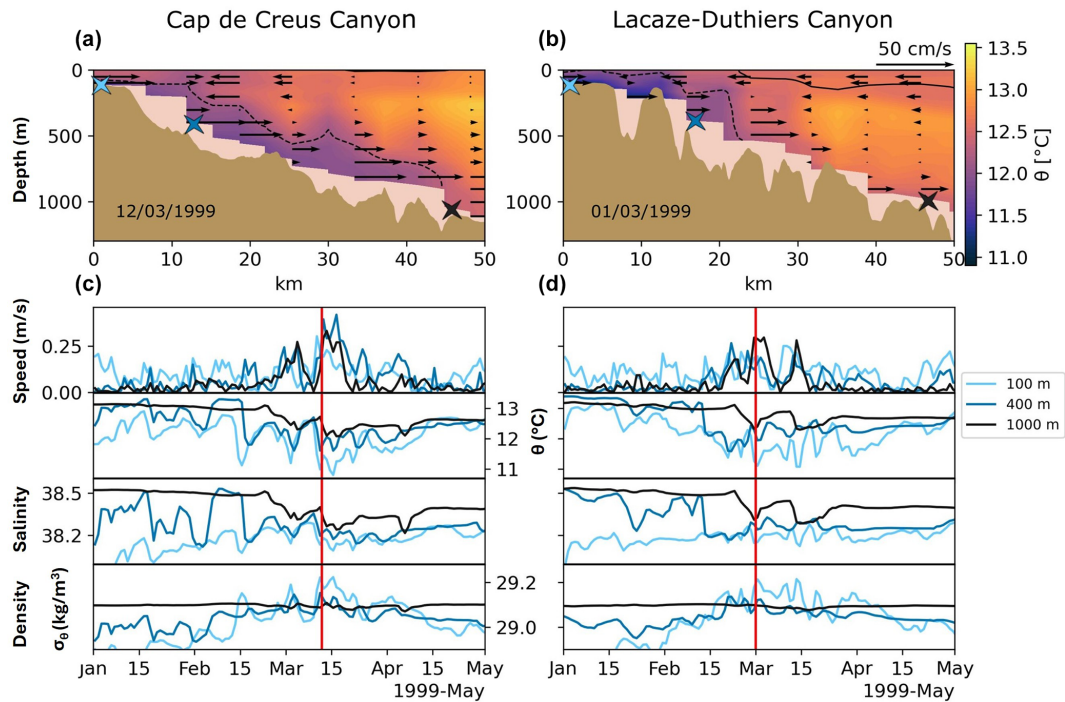
Peak DSWC transport values of 1.29 Sv are found in the CCC, and values of 0.59 Sv are found in the LDC for 2005 (Fig. 2e). The winter-integrated transport is also highest in 2005: 1750 km<sup>3</sup> summing the two canyons. From 1987 to 2021, the IDSWC transport decreased by 59 %, and the DSWC days in CCC dropped by 60 %, but Mann–Kendall tests show non-statistical significance at the 90 % confidence level.

Figure 4 shows how the cold ( $\theta < 12.6^\circ\text{C}$ ) and dense ( $\sigma_\theta > 29.1 \text{ kg m}^{-3}$ ) shelf water flows along the seafloor from the shelf edge into both canyons. During a winter with IDSWC (Movie S3 in the Supplement), the relatively fresh shelf water becomes colder until becoming denser than intermediate water and sinks until reaching neutral density. Firstly, shelf water sinks to intermediate depths, as seen in Fig. 4c and d, where temperature and salinity values at 100 m depth match the values at 400 m depth. Then, shelf water continues to cool and densify until reaching the density of

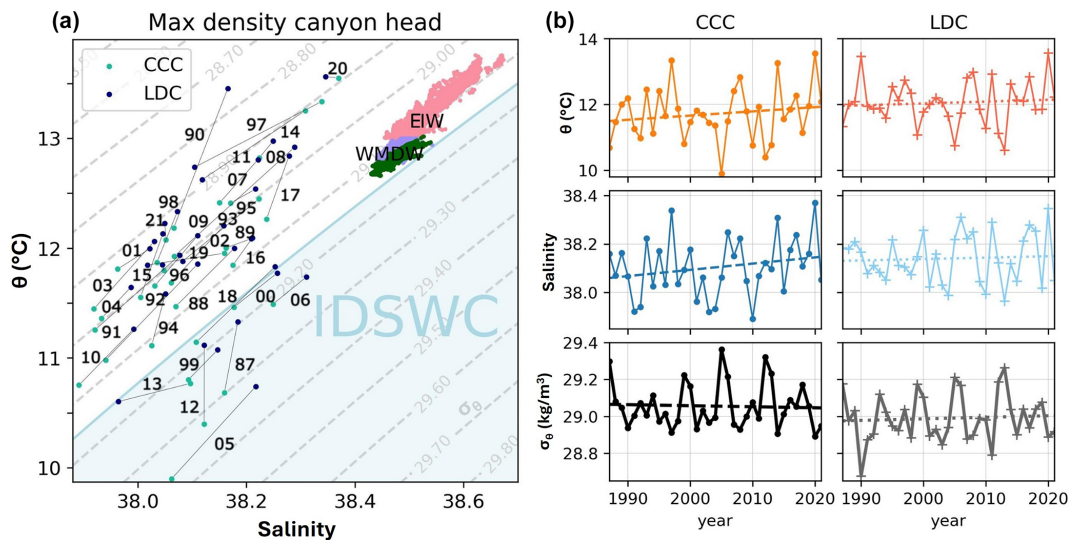
the deeper water and then cascades more intensely. Consequently, the velocity at 1000 m increases, and the temperature and salinity decrease. Peaks in density, speed, and salinity, along with drops in temperature at 100, 400, and 1000 m depth, occur almost simultaneously, meaning cascading shelf water reached the deep basin in less than 24 h.

Figure 5 shows shelf water exceeding  $\sigma_\theta > 29.16 \text{ kg m}^{-3}$  in 1987, 1999, 2000, 2005, 2006, 2012, 2013, and 2018, being denser at the canyon heads than at the basin bottom. Therefore, the model resolves the IDSWC and propagates this dense water down-canyon. In other years, such as 1992, 2003 and 2010, the densest shelf water is colder than in 2000 or 2006 but fresher, making it less dense and preventing cascading.

The maximum annual shelf water potential density at the canyon heads (Fig. 5a) shows that water in the CCC is generally colder and fresher, but shelf water densities in the CCC and LDC are typically almost identical, with the CCC waters



**Figure 4.** (a, b) IDSWC in 1999 in the CCC and LDC from reanalysis. The dashed black line marks the  $29.1 \text{ kg m}^{-3}$  isopycnal, and the solid black line marks the  $29.0 \text{ kg m}^{-3}$  isopycnal. Black vectors show down-canyon flow. Blue crosses mark the canyon bottom locations shown in (c) and (d). The bathymetry corresponds to the reanalysis section represented with a gray line in Fig. 1. (c, d) Time series of current speed, potential temperature, salinity, and potential density. The vertical red line marks the date shown in (a) and (b).



**Figure 5.** (a)  $\theta$ - $S$  diagrams with reanalysis data for the day with maximum density annually at the canyon heads (100 m depth). Two-digit numbers indicate years, and the gray line connects canyon values. Eastern Intermediate Water (EIW) and Western Mediterranean Deep Water (WMDW) (pink and purple, respectively) are defined based on Juza et al. (2013) and correspond to the hydrographic properties at the bottom of the CCC between 400 and 1300 m of depth and WMDW at 2300 m in the basin (dark green). Blue shading highlights years with IDSWC, when canyon head potential density exceeds the maximum density of WMDW in our data ( $\sigma_{\theta} > 29.16 \text{ kg m}^{-3}$ ). (b) Annual maximum shelf water density (bottom), salinity (middle), and temperature (top) in both canyons, with dashed lines showing trends (non-statistically significant).

often being slightly denser or significantly denser, as in 1987 and 2012. Both canyons exhibit densities sufficient for deep cascading in 1987, 1999, 2000, 2005, 2012, 2013, and 2018. Comparing these shelf water densities over time (Fig. 5b), no significant trend is found: the slight increase in temperature of 0.38 and 0.17 °C per 30 years is compensated for by an increase in salinity of 0.08 and 0.02 per 30 years in the CCC and LDC, respectively.

#### 4 Discussion

The MedSea reanalysis correctly reproduces IDSWC events, even with 84 % recall for the correct week, due to the contribution of ERA5 atmospheric forcing, lateral advection, and assimilated shelf water observations. Therefore, the NEMO model succeeds in simulating opportune IDSWC given the right atmospheric and oceanic forcing conditions. This provides reliability to the simulated IDSWC events in the pre-observational period. With its ~4 km horizontal resolution, the reanalysis identifies submarine canyons (Fig. 1b) and simulates IDSWC. However, at 1000 m depth in the canyons, especially during intense events, such as in 2005 and 2012, the reanalysis temperature and speed are less extreme than the observed temperature and speed. This is mainly due to resolution limitations, smoothing and oversimplifying the lateral and vertical hydrographic complexity of IDSWC (Fig. 1b) and leaving the short-lived IDSWC flows poorly captured. The reanalysis aligns better with the observed IDSWC days in the CCC, where the events are stronger, since the densest shelf water is accumulated by the Cap de Creus peninsula (Fig. 1, Movie S1 and S2). Figure 5a aligns with Figs. 2–4, where colder IDSWC is found in the CCC, but both canyons exhibit densities sufficient for cascading in 1987, 1999, 2000, 2005, 2012, 2013, and 2018. Both shelf water temperature and shelf water salinity are key in controlling shelf water density and cascading (Fig. 5a). However, the reanalysis ignores the interannual variability in river discharges, which may lead to possible discrepancies in terms of salinity. The uncertainty in transport estimates arises from the lack of full-water-column observations, but IDSWC transport may be underestimated in years with fewer IDSWC days and lower mean velocities than observed (e.g., 2012) and overestimated in the opposite case (e.g., 2018). The slight decline in the IDSWC transport aligns with the observed IDSWC days, although more data are required to obtain a significative trend.

The long-lasting IDSWC event revealed in 1987 aligns with Béthoux et al. (2002), who suggested an IDSWC event after January 1987 and no events from 1988 to 1998, as confirmed by the reanalysis. The two most significant observed events occurred in 2005 and 2012 (Figs. 2 and 3), as reported by Canals et al. (2006), Palanques et al. (2006), Sanchez-Vidal et al. (2008), Ulses et al. (2008b), Durrieu de Madron et al. (2013), and Puig et al. (2013). The strongest export of

IDSWC occurred in 2005, the transport volume of which was estimated by Canals et al. (2006) to be 750 km<sup>3</sup>, by Ulses et al. (2008b) to be over 1200 km<sup>3</sup>, and in the present study to be 1750 km<sup>3</sup>.

#### 5 Conclusion

The MedSea reanalysis is suitable for studying the IDSWC interannual variability in the NW Mediterranean, particularly in the LDC and CCC, where IDSWC occurred in 1987, 1999, 2000, 2005, 2006, 2012, and 2013 and briefly in 2018 and 2019. The reanalysis effectively captures IDSWC timing and intensity, revealing pre-observational events and transport variability in both canyons. IDSWC intensity is higher in the CCC, and events tend to recur the following winter. Due to this longer time series of reanalysis data, a 6–7-year frequency of paired IDSWC events is detected, interrupted during the early and mid-1990s. Possible trends in IDSWC transport, duration, or shelf water properties have appeared to be non-statistically significant, although this should continue to be monitored as some decline has been perceived in recent years.

The success of using reanalysis to describe known IDSWC episodes provides a valuable tool for studying IDSWC or other overflows in recent years, even in the absence of observations. The potential of the NEMO model to resolve IDSWC under the right forcing or preconditioning factors may enhance the prediction of these events.

*Data availability.* MedSea reanalysis data are available on the CMEMS website ([https://data.marine.copernicus.eu/product/MEDSEA\\_MULTIYEAR\\_PHY\\_006\\_004/services](https://data.marine.copernicus.eu/product/MEDSEA_MULTIYEAR_PHY_006_004/services), last access: 28 January 2025, [https://doi.org/10.25423/CMCC/MEDSEA\\_MULTIYEAR\\_PHY\\_006\\_004\\_E3R1](https://doi.org/10.25423/CMCC/MEDSEA_MULTIYEAR_PHY_006_004_E3R1); Escudier et al., 2020). The LD1000 dataset (<https://doi.org/10.17882/45980>, Durrieu de Madron et al., 2024) is available at <https://campagnes.flotteoceanographique.fr/series/62/> (last access: 3 February 2025) and <https://www.seanoe.org/data/00349/45980/> (last access: 3 February 2025). The CC1000 (<https://doi.org/10.17882/104746>, Sanchez-Vidal et al., 2025) and CC750 (<https://doi.org/10.17882/104799>, Puig and Palanques, 2025) datasets are available at <https://www.seanoe.org/data/00936/104746/> (last access: 3 February 2025) and <https://www.seanoe.org/data/00936/104799/> (last access: 10 February 2025), respectively.

*Video supplement.* Movie S1 shows the bottom  $\theta$  from the Mediterranean Sea Physics Reanalysis in winter 2005. White markers represent the locations of the moorings. Movie S2 shows the same as Movie S1 but for winter 2012. Movie S3 shows the daily sequence of the hydrographic properties in the vertical sections of Cap de Creus and Lacaze-Duthiers canyons, as in Fig. 4, but for all of the winters with IDSWC. These movies are all available at <https://av.tib.eu/series/1951> (last ac-

cess: 29 September 2025; DOIs: <https://doi.org/10.5446/70980>, Fos et al., 2025a; <https://doi.org/10.5446/70979>, Fos et al., 2025b; <https://doi.org/10.5446/70978>, Fos et al., 2025c).

**Author contributions.** The study was carried out under the supervision of JPI, ASV, DA, and LR, with the assistance of VEP, CFL, MAC, XDM, and PP. Mooring data acquisition and processing were performed by AC, MCD, ASV, DA, XDM, and PP. HF conducted the analysis and wrote the original draft, with contributions from all of the co-authors in terms of reviewing and editing.

**Competing interests.** The contact author has declared that none of the authors has any competing interests.

**Disclaimer.** Publisher's note: Copernicus Publications remains neutral with regard to jurisdictional claims made in the text, published maps, institutional affiliations, or any other geographical representation in this paper. While Copernicus Publications makes every effort to include appropriate place names, the final responsibility lies with the authors.

**Acknowledgements.** We thank the Direcció General de Política Marítima i Pesca Sostenible for the support in the framework of the collaborative agreement between Universitat de Barcelona and the Departament d'Acció Climàtica, Alimentació i Agenda Rural. Anna Sanchez-Vidal acknowledges the support by the Catalan Institution for Research and Advanced Studies ICREA. We acknowledge the MOOSE program (Mediterranean Ocean Observing System for the Environment; <https://www.moose-network.fr/en/home/>; last access: 15 September 2025) funded by CNRS-INSU and the Research Infrastructure ILICO (CNRS-IFREMER). Sara Iftikhar is also acknowledged for providing the easy-mpl Python package. We thank the two anonymous reviewers for their valuable comments. Finally, we would like to thank the crew from the vessel *Lluerna* and all of the people involved in the CC1000 and LD1000 mooring operations during almost 2 decades of efforts at sea to maintain these long-term deployments that are crucial to detect changes in the ocean.

**Financial support.** This research has been supported by the Ministerio de Ciencia e Innovación of the Spanish government through the FAR-DWO project number PID2020-114322RBI00 and the ICM Severo Ochoa Centre of Excellence accreditation (grant no. CEX2024-001506-M), funded by MCIN/AEI/10.13039/501100011033. The study is also supported by the Generalitat de Catalunya through the Excellence Research Groups Grants (nos. 2021-SGR-01195 and 2021-SGR-00433) and through the FI-SDUR fellowship (grant no. 2023-FISDU-00233) provided by the Secretaria d'Universitats i Recerca from the Departament de Recerca i Universitats.

**Review statement.** This paper was edited by Anne Marie Treguier and reviewed by two anonymous referees.

## References

- Arjona-Camas, M., Durrieu de Madron, X., Bourrin, F., Fos, H., Sanchez-Vidal, A., and Amblas, D.: Dense shelf-water and associated sediment transport in the Cap de Creus Canyon and adjacent shelf under mild winter regimes: insights from the 2021–2022 winter, EGU sphere [preprint], <https://doi.org/10.5194/egusphere-2025-1310>, 2025.
- Béthoux, J. P., Durrieu de Madron, X., Nyffeler, F., and Tailliez, D.: Deep water in the western Mediterranean: Peculiar 1999 and 2000 characteristics, shelf formation hypothesis, variability since 1970 and geochemical inferences, *J. Mar. Syst.* 33–34, 117–131, [https://doi.org/10.1016/S0924-7963\(02\)00055-6](https://doi.org/10.1016/S0924-7963(02)00055-6), 2002.
- Canals, M., Puig, P., De Madron, X. D., Heussner, S., Palanques, A., and Fabres, J.: Flushing submarine canyons, *Nature*, 444, 354–357, <https://doi.org/10.1038/nature05271>, 2006.
- Dufau-Jullian, C., Marsaleix, P., Petrenko, A., and Dekeyser, I.: Three-dimensional modeling of the Gulf of Lion's hydrodynamics (northwest Mediterranean) during January 1999 (MOOGLI3 Experiment) and late winter 1999: Western Mediterranean Intermediate Water's (WIW's) formation and its cascading over the shelf break, *J. Geophys. Res.-Oceans*, 109, <https://doi.org/10.1029/2003JC002019>, 2004.
- Durrieu De Madron, X., Houpert, L., Puig, P., Sanchez-Vidal, A., Testor, P., Bosse, A., Estournel, C., Somot, S., Bourrin, F., Bouin, M. N., Beauverger, M., Beguery, L., Calafat, A., Canals, M., Cassou, C., Coppola, L., Dausse, D., D'Ortenzio, F., Font, J., Heussner, S., Kunesch, S., Lefevre, D., Le Goff, H., Martín, J., Mortier, L., Palanques, A., and Raimbault, P.: Interaction of dense shelf water cascading and open-sea convection in the northwestern Mediterranean during winter 2012, *Geophys. Res. Lett.*, 40, 1379–1385, <https://doi.org/10.1002/grl.50331>, 2013.
- Durrieu de Madron, X., Aubert, D., Charrière, B., Kunesch, S., Menniti, C., Radakovitch, O., and Sola, J.: Impact of Dense Water Formation on the Transfer of Particles and Trace Metals from the Coast to the Deep in the Northwestern Mediterranean, *Water (Switzerland)*, 15, <https://doi.org/10.3390/w15020301>, 2023.
- Durrieu de Madron, X., Heussner, S., Delsaut N., Kunesch S., and Menniti C.: BILLION observatory data, SEANOE [data set], <https://doi.org/10.17882/45980>, 2024.
- Escudier, R., Clementi, E., Omar, M., Cipollone, A., Pistoia, J., Aydogdu, A., Drudi, M., Grandi, A., Lyubartsev, V., Lecci, R., Cretí, S., Masina, S., Coppini, G., and Pinardi, N.: Mediterranean Sea Physical Reanalysis (CMEMS MED-Currents) (Version 1) Data set, Copernicus Monitoring Environment Marine Service (CMEMS) [data set], [https://doi.org/10.25423/CMCC/MEDSEA\\_MULTIYEAR\\_PHY\\_006\\_004\\_E3R1](https://doi.org/10.25423/CMCC/MEDSEA_MULTIYEAR_PHY_006_004_E3R1), 2020.
- Escudier, R., Clementi, E., Cipollone, A., Pistoia, J., Drudi, M., Grandi, A., Lyubartsev, V., Lecci, R., Aydogdu, A., Delrosso, D., Omar, M., Masina, S., Coppini, G., and Pinardi, N.: A High Resolution Reanalysis for the Mediterranean Sea, *Front. Earth Sci. (Lausanne)*, 9, <https://doi.org/10.3389/feart.2021.702285>, 2021.
- Fos, H., Peña-Izquierdo, J., Amblas, D., Arjona-Camas, M., Romero, L., Estella-Pérez, V., Florindo-Lopez, C., Calafat, A., Cerdà-Domènech, M., Puig, P., Durrieu de Madron, X., and

- Sanchez-Vidal, A.: Movie S1: Bottom  $\theta$  in the Gulf of Lion from the Mediterranean Sea Physics Reanalysis in winter 2005, TIB [video], <https://doi.org/10.5446/70980>, 2025a.
- Fos, H., Peña-Izquierdo, J., Amblas, D., Arjona-Camas, M., Romero, L., Estella-Pérez, V., Florindo-Lopez, C., Calafat, A., Cerdà-Domènech, M., Puig, P., Durrieu de Madron, X., and Sanchez-Vidal, A.: Movie S2: Bottom  $\theta$  in the Gulf of Lion from the Mediterranean Sea Physics Reanalysis in winter 2012, TIB [video], <https://doi.org/10.5446/70979>, 2025b.
- Fos, H., Peña-Izquierdo, J., Amblas, D., Arjona-Camas, M., Romero, L., Estella-Pérez, V., Florindo-Lopez, C., Calafat, A., Cerdà-Domènech, M., Puig, P., Durrieu de Madron, X., and Sanchez-Vidal, A.: Movie S3: Daily sequence of the hydrographic properties in the vertical sections of Cap de Creus and Lacaze-Duthiers canyons, TIB [video], <https://doi.org/10.5446/70978>, 2025c.
- Herrmann, M., Estournel, C., Déqué, M., Marsaleix, P., Sevault, F., and Somot, S.: Dense water formation in the Gulf of Lions shelf: Impact of atmospheric interannual variability and climate change, *Cont. Shelf Res.*, 28, 2092–2112, <https://doi.org/10.1016/j.csr.2008.03.003>, 2008.
- Hersbach, H., Bell, B., Berrisford, P., Hirahara, S., Horányi, A., Muñoz-Sabater, J., Nicolas, J., Peubey, C., Radu, R., Schepers, D., Simmons, A., Soci, C., Abdalla, S., Abellan, X., Balsamo, G., Bechtold, P., Biavati, G., Bidlot, J., Bonavita, M., De Chiara, G., Dahlgren, P., Dee, D., Diamantakis, M., Dragani, R., Flemming, J., Forbes, R., Fuentes, M., Geer, A., Haimberger, L., Healy, S., Hogan, R. J., Hólm, E., Janisková, M., Keeley, S., Laloyaux, P., Lopez, P., Lupu, C., Radnoti, G., de Rosnay, P., Rozum, I., Vamborg, F., Villaume, S., and Thépaut, J. N.: The ERA5 global reanalysis, *Quarterly Journal of the Royal Meteorological Society*, 146, 1999–2049, <https://doi.org/10.1002/qj.3803>, 2020.
- Heussner, S., Durrieu de Madron, X., Calafat, A., Canals, M., Carbonne, J., Delsaut, N., and Saragoni, G.: Spatial and temporal variability of downward particle fluxes on a continental slope: Lessons from an 8-yr experiment in the Gulf of Lions (NW Mediterranean), *Mar. Geol.*, 234, 63–92, <https://doi.org/10.1016/j.margeo.2006.09.003>, 2006.
- Ivanov, V. V., Shapiro, G. I., Huthnance, J. M., Aleynik, D. L., and Golovin, P. N.: Cascades of dense water around the world ocean, *Prog. Oceanogr.*, <https://doi.org/10.1016/j.pocean.2003.12.002>, 2004.
- Juza, M., Renault, L., Ruiz, S., and Tintoré, J.: Origin and pathways of winter intermediate water in the northwestern mediterranean sea using observations and numerical simulation, *J. Geophys. Res.-Oceans*, 118, 6621–6633, <https://doi.org/10.1002/2013JC009231>, 2013.
- Madec, G. and the NEMO team: NEMO ocean engine: version 3.6 stable, Note du Pole de modelisation, Institut Pierre-Simon Laplace N 27, ISSN No 1288-1619, <https://www.nemo-ocean.eu/doc/> (last access: 10 January 2025), 2016.
- MEDOC Group: Observation of formation of deep water in the Mediterranean Sea, 1969, *Nature*, 227, 1037–1040, <https://doi.org/10.1038/2271037a0>, 1970.
- Millot, C.: The Gulf of Lions' hydrodynamics, *Cont. Shelf Res.*, 10, 885–894, 1990.
- Palanques, A., Durrieu de Madron, X., Puig, P., Fabres, J., Guillén, J., Calafat, A., Canals, M., Heussner, S., and Bonnin, J.: Suspended sediment fluxes and transport processes in the Gulf of Lions submarine canyons. The role of storms and dense water cascading, *Mar. Geol.*, 234, 43–61, <https://doi.org/10.1016/j.margeo.2006.09.002>, 2006.
- Puig, P. and Palanques, A.: CC750 observatory data, SEANOE [data set], <https://doi.org/10.17882/104799>, 2025.
- Puig, P., Madron, X. D. de, Salat, J., Schroeder, K., Martín, J., Karageorgis, A. P., Palanques, A., Roullier, F., Lopez-Jurado, J. L., Emelianov, M., Moutin, T., and Houpert, L.: Thick bottom nepheloid layers in the western Mediterranean generated by deep dense shelf water cascading, *Prog. Oceanogr.*, 111, 1–23, <https://doi.org/10.1016/j.pocean.2012.10.003>, 2013.
- Sanchez-Vidal, A., Pasqual, C., Kerhervé, P., Calafat, A., Heussner, S., Palanques, A., Durrieu de Madron, X., Canals, M., and Puig, P.: Impact of dense shelf water cascading on the transfer of organic matter to the deep western Mediterranean basin, *Geophys. Res. Lett.*, 35, <https://doi.org/10.1029/2007GL032825>, 2008.
- Sanchez-Vidal, A., Calafat, A., Amblas, D., Cerdà-Domènech, M., and Fos, H.: CC1000 observatory data, SEANOE [data set], <https://doi.org/10.17882/104746>, 2025.
- Schroeder, K., Ismail, S. Ben, Bensi, M., Bosse, A., Chiggiato, J., Civitarese, G., Falcieri, F. M., Fusco, G., Gačić, M., Gertman, I., Kubin, E., Malanotte-Rizzoli, P., Martellucci, R., Menna, M., Ozer, T., Taupier-Letage, I., Yáñez, M. V., Velaoras, D., and Vilibić, I.: A consensus-based, revised and comprehensive catalogue for Mediterranean water masses acronyms, *Mediterr. Mar. Sci.*, 25, 783–791, <https://doi.org/10.12681/MMS.38736>, 2024.
- Storto, A. and Masina, S.: C-GLORSv5: an improved multipurpose global ocean eddy-permitting physical reanalysis, *Earth Syst. Sci. Data*, 8, 679–696, <https://doi.org/10.5194/essd-8-679-2016>, 2016.
- Szekely, T., Gourrion, J., Pouliquen, S., and Reverdin, G.: CORA, Coriolis Ocean Dataset for Reanalysis, SEANOE [data set], <https://doi.org/10.17882/46219>, 2024.
- Testor, P., Bosse, A., Houpert, L., Margirier, F., Mortier, L., Legoff, H., Dausse, D., Labaste, M., Karstensen, J., Hayes, D., Olita, A., Ribotti, A., Schroeder, K., Chiggiato, J., Onken, R., Heslop, E., Mourre, B., D'ortenzio, F., Mayot, N., Lavigne, H., de Fommervault, O., Coppola, L., Prieur, L., Taillandier, V., Durrieu de Madron, X., Bourrin, F., Many, G., Damien, P., Estournel, C., Marsaleix, P., Taupier-Letage, I., Raimbault, P., Waldman, R., Bouin, M. N., Giordani, H., Caniaux, G., Somot, S., Ducrocq, V., and Conan, P.: Multiscale Observations of Deep Convection in the Northwestern Mediterranean Sea During Winter 2012–2013 Using Multiple Platforms, *J. Geophys. Res.-Oceans*, 123, 1745–1776, <https://doi.org/10.1002/2016JC012671>, 2018.
- Ulses, C., Estournel, C., Bonnin, J., Durrieu de Madron, X., and Marsaleix, P.: Impact of storms and dense water cascading on shelf-slope exchanges in the Gulf of Lion (NW Mediterranean), *J. Geophys. Res.-Oceans*, 113, <https://doi.org/10.1029/2006JC003795>, 2008a.
- Ulses, C., Estournel, C., Puig, P., Durrieu de Madron, X., and Marsaleix, P.: Dense shelf water cascading in the northwestern Mediterranean during the cold winter 2005: Quantification of the export through the Gulf of Lion and the Catalan margin, *Geophys. Res. Lett.*, 35, <https://doi.org/10.1029/2008GL033257>, 2008b.

Wadoux, A. M. J. C., Walvoort, D. J. J., and Brus, D. J.: An integrated approach for the evaluation of quantitative soil maps through Taylor and solar diagrams, *Geoderma*, 405, <https://doi.org/10.1016/j.geoderma.2021.115332>, 2022.

Weatherall, P., Marks, K. M., Jakobsson, M., Schmitt, T., Tani, S., Arndt, J. E., Rovere, M., Chayes, D., Ferrini, V., and Wigley, R.: A new digital bathymetric model of the world's oceans, *Earth and Space Science*, 2, 331–345, <https://doi.org/10.1002/2015EA000107>, 2015.